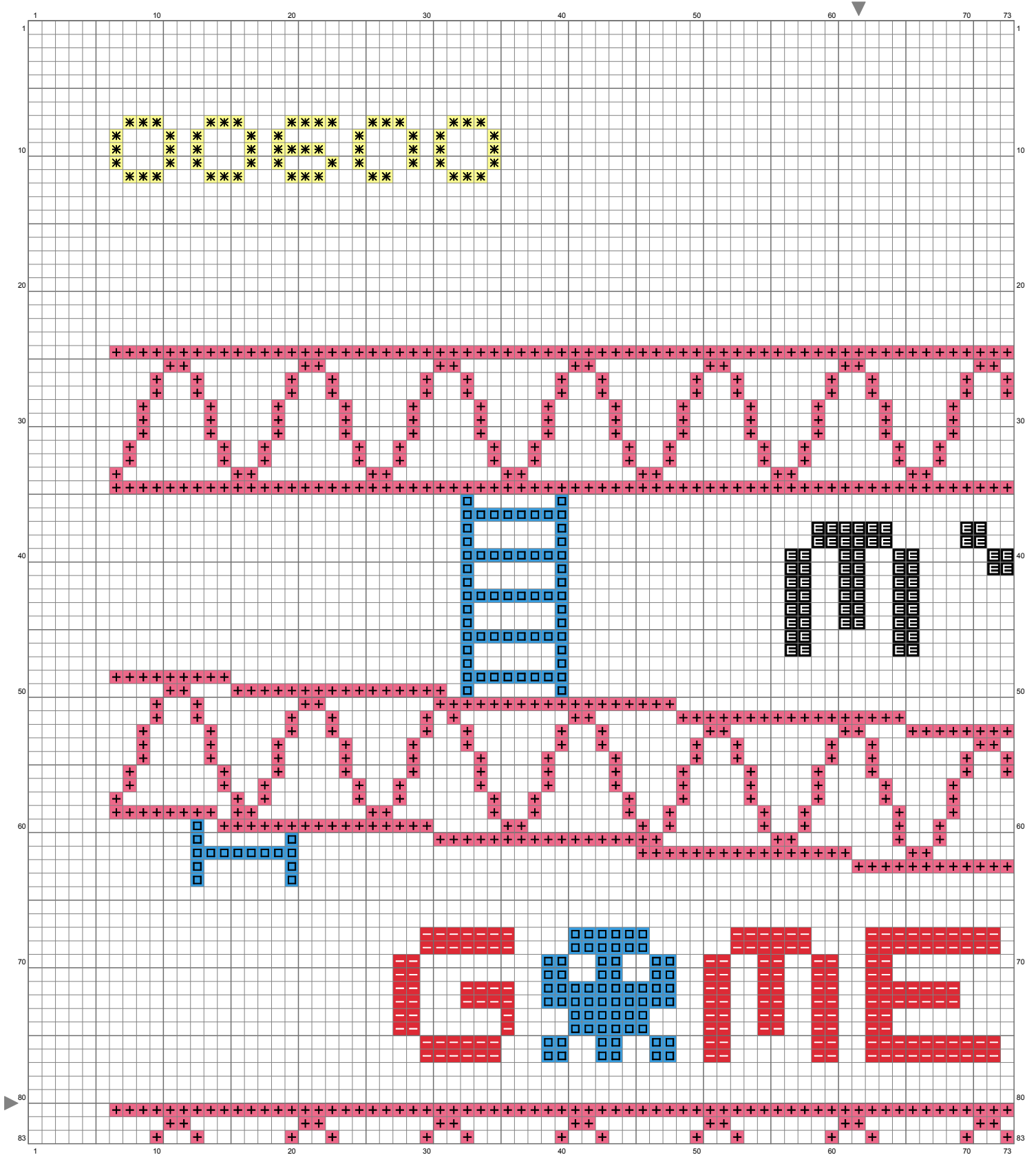
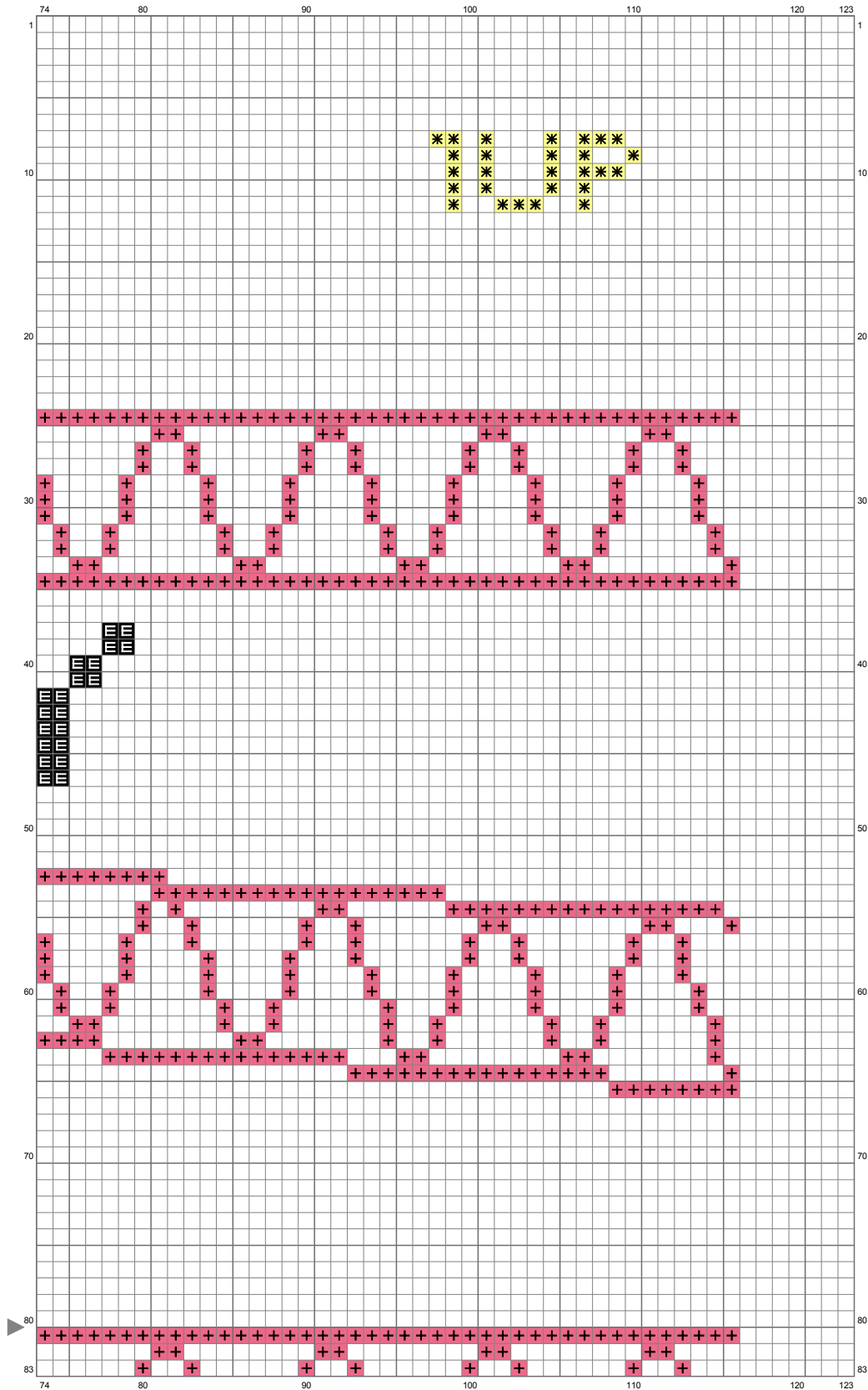


my game is classic



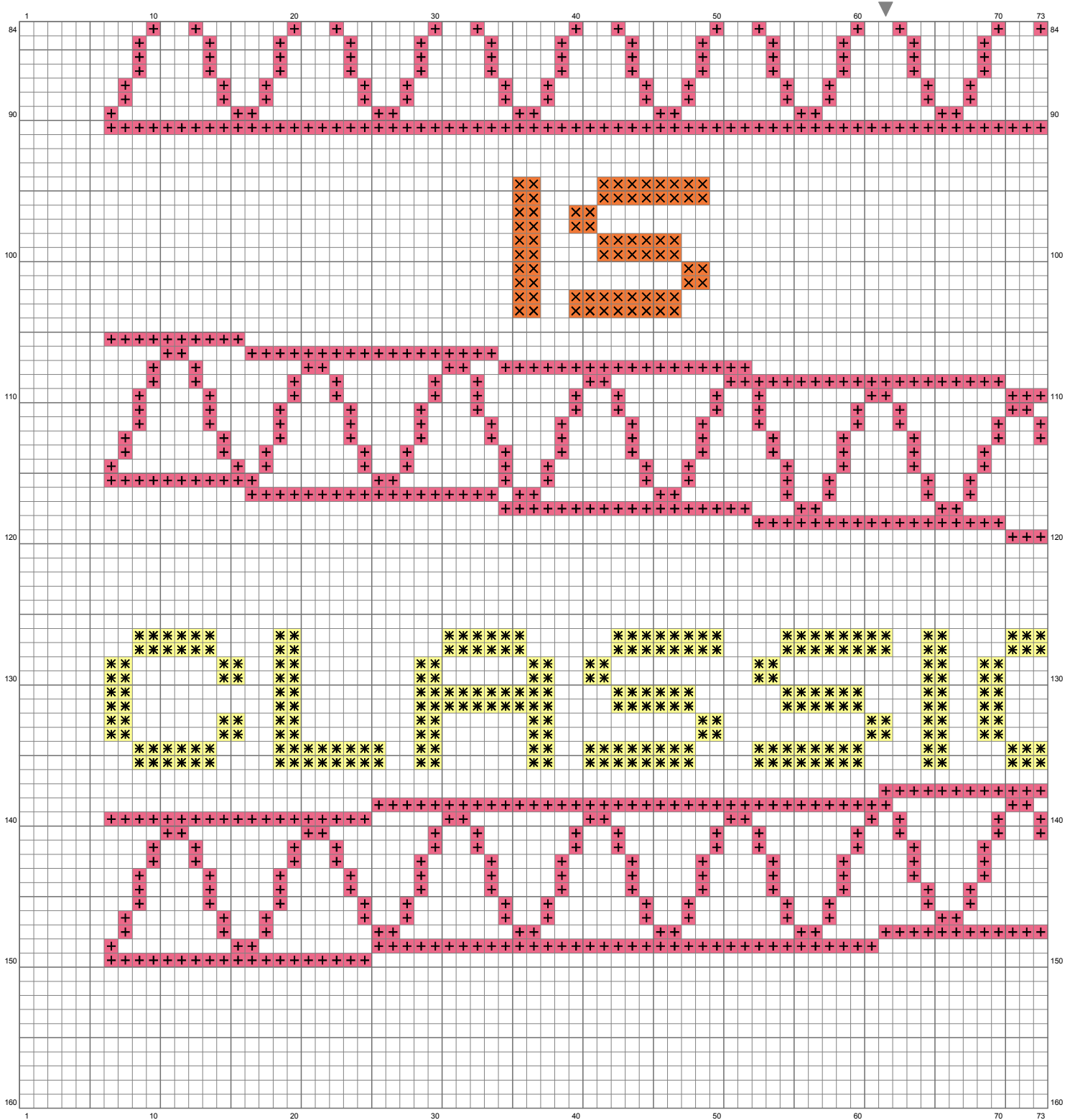
(This chart is printed using KG-Chart LE for Cross Stitch.)

my game is classic



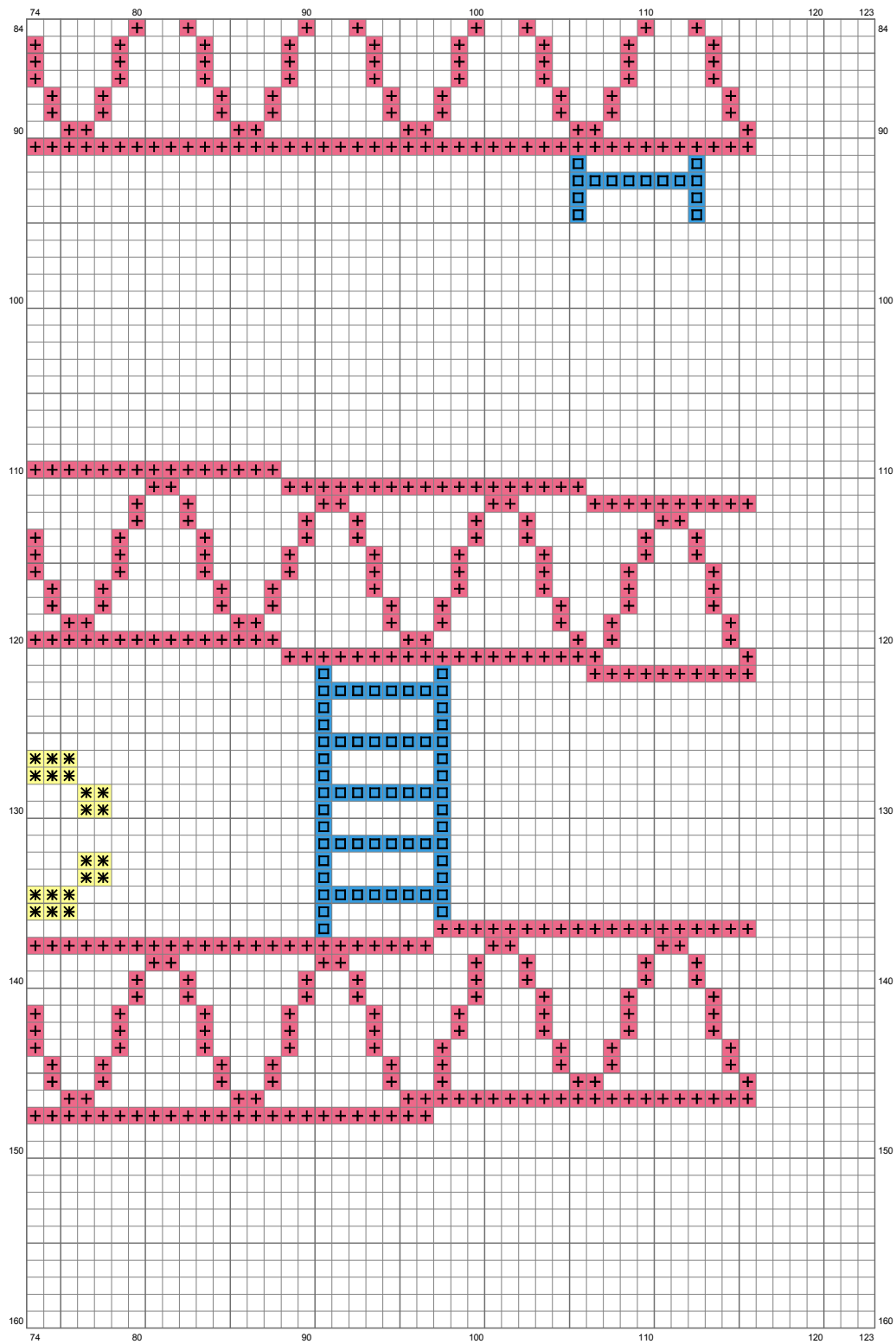
(This chart is printed using KG-Chart LE for Cross Stitch.)

my game is classic



(This chart is printed using KG-Chart LE for Cross Stitch.)

my game is classic



(This chart is printed using KG-Chart LE for Cross Stitch.)

my game is classic

Stitch Count:123w x 160h







Cloth:Aida Cloth's Color:White

Finished Size:34.71 cm x 45.15 cm (18 ct./inch)

Total 6 Colors

Color Table (DMC)

Cross Stitch

	335	(2095 ct)
	310	(84 ct)
	996	(218 ct)
	666	(166 ct)
	3853	(72 ct)
	445	(388 ct)