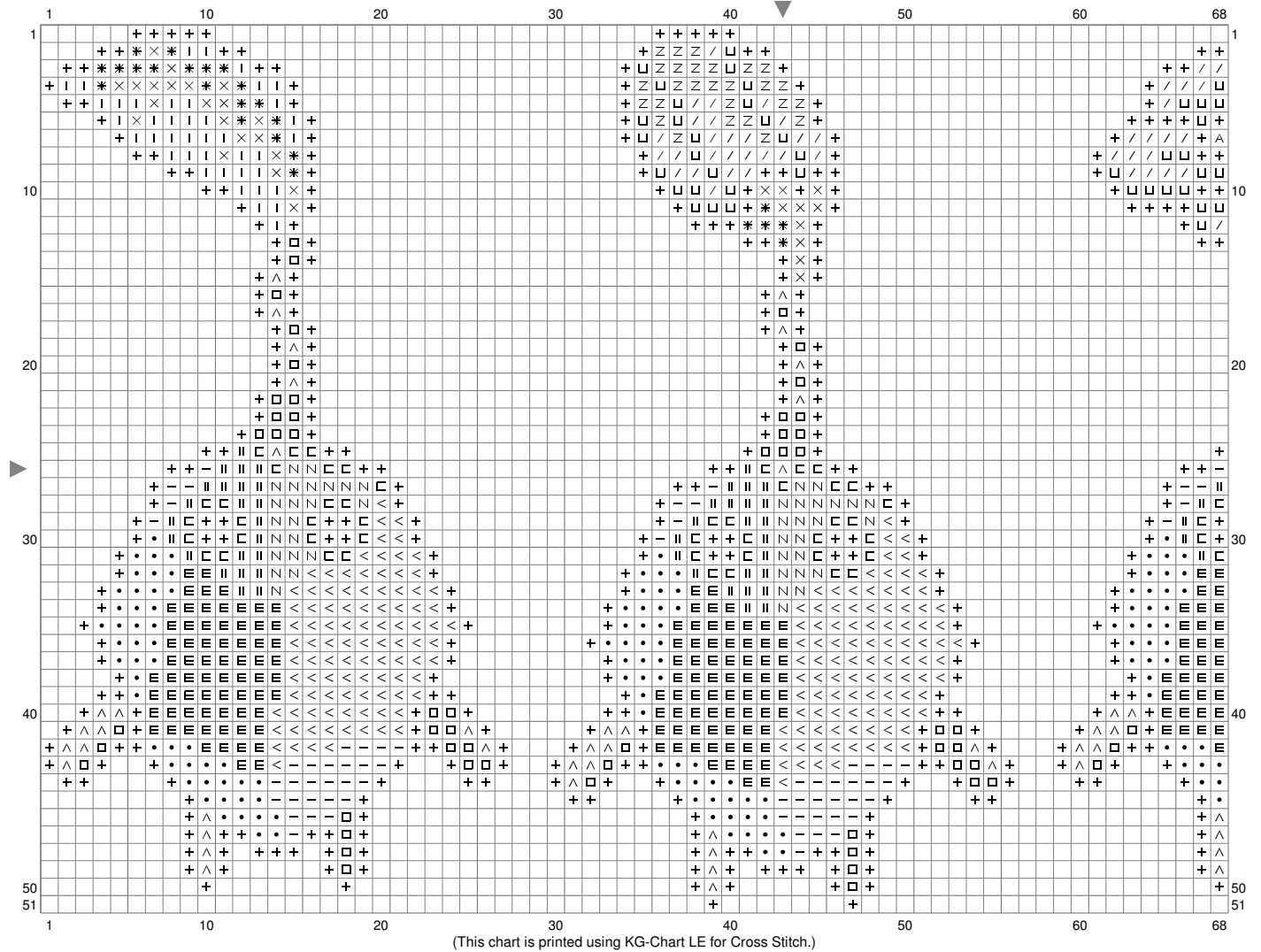
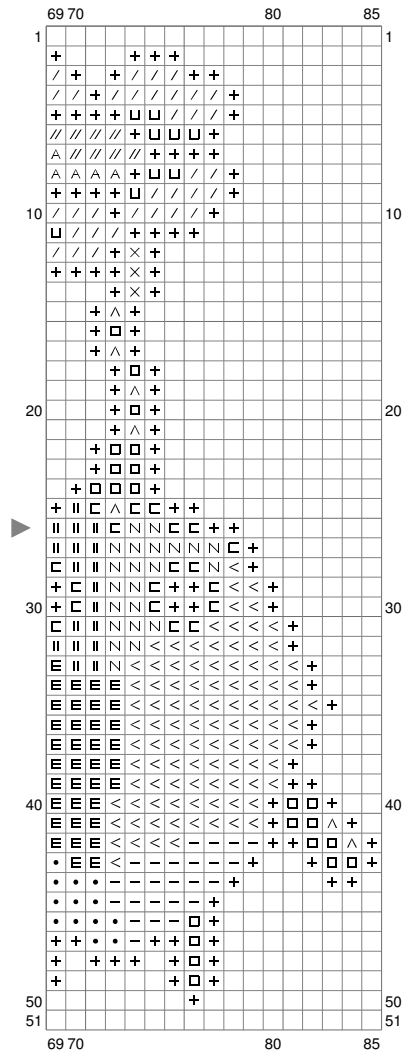


Untitled



Untitled



(This chart is printed using KG-Chart LE for Cross Stitch.)

Stitch Count: 85w x 51h

Finished Size: 30.84 cm x 18.50 cm (14 ct./inch)

Cloth: Aida

Cloth's Color: White

of colors: 18 Colors

Color Table (DMC)

Cross Stitch

+	310	(491 ct)
⊞	934	(207 ct)
⊞	500	(77 ct)
—	3021	(90 ct)
×	3818	(34 ct)
✱	909	(24 ct)
I	701	(41 ct)
•	3799	(144 ct)
△	924	(54 ct)
	535	(69 ct)
<	645	(297 ct)
⊞	796	(50 ct)
/	797	(78 ct)
⊞	3838	(27 ct)
N	523	(66 ct)
//	444	(8 ct)
A	3822	(6 ct)
⊞	BLANC	(68 ct)