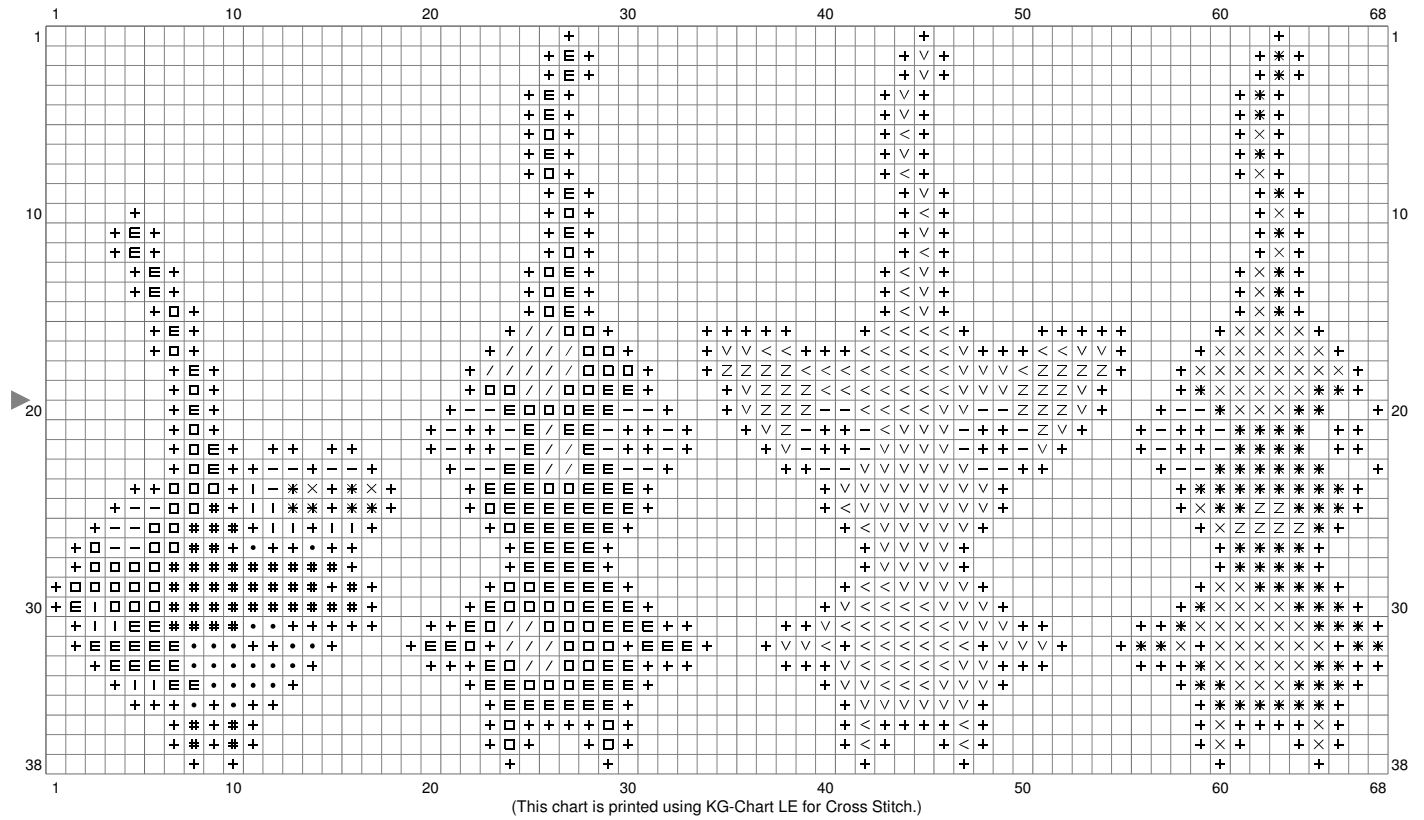
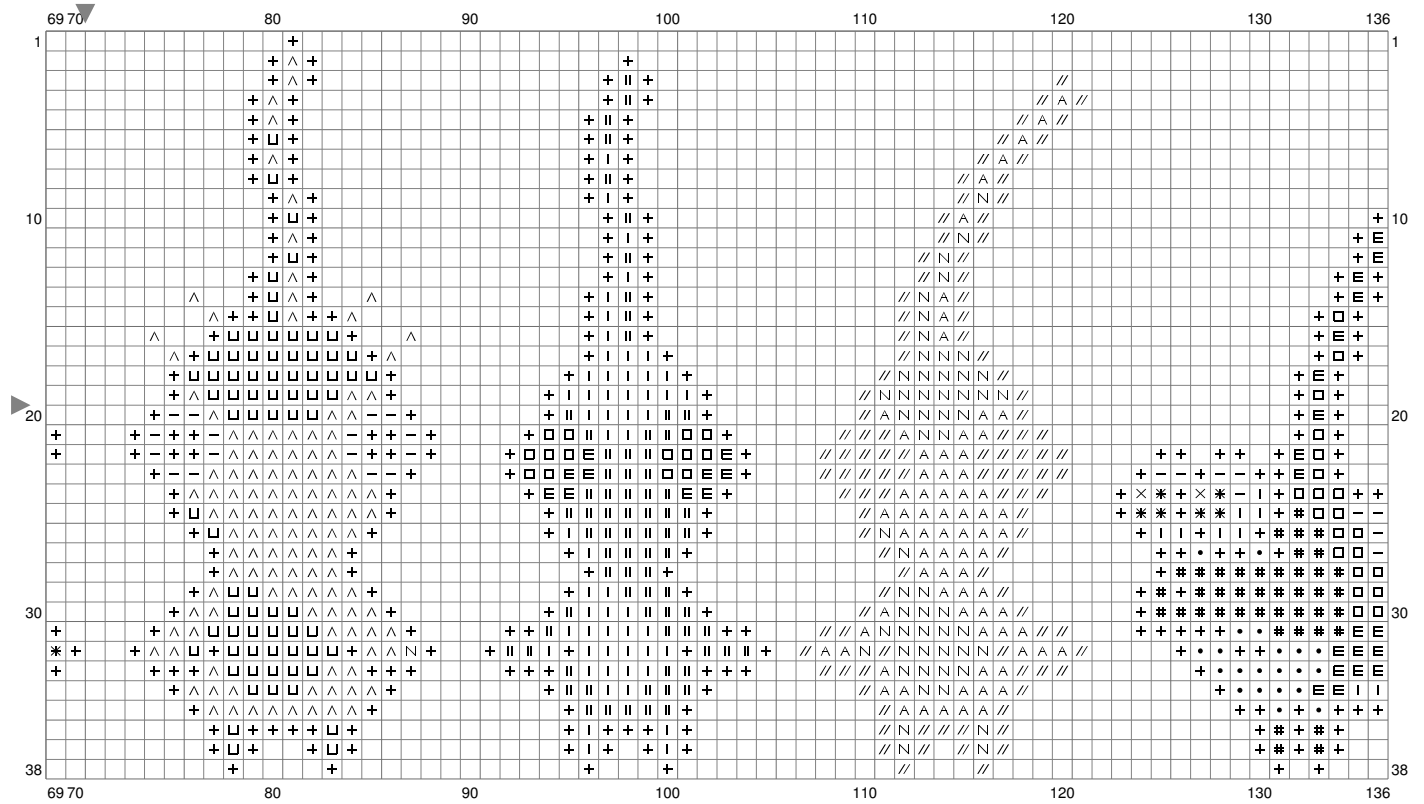


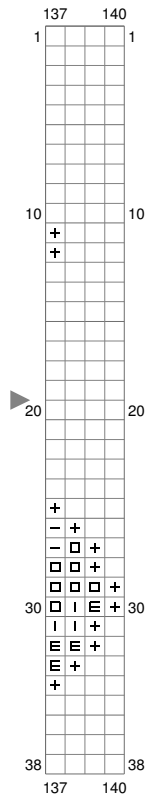
# Untitled



# Untitled



# Untitled



Stitch Count: 140w x 38h

Finished Size: 50.8 cm x 13.78 cm (14 ct./inch)

Cloth: Aida

Cloth's Color: White

# of colors: 19 Colors

## Color Table (DMC)

### Cross Stitch

—	BLANC	(78 ct)
+	310	(668 ct)
□	349	(119 ct)
<	444	(74 ct)
E	498	(137 ct)
△	550	(122 ct)
/	608	(25 ct)
	648	(76 ct)
∇	725	(103 ct)
•	742	(42 ct)
I	762	(80 ct)
⊥	917	(76 ct)
△	934	(75 ct)
N	939	(57 ct)
Z	946	(28 ct)
×	995	(70 ct)
*	3843	(95 ct)
//	3846	(108 ct)
#	3855	(84 ct)

(This chart is printed using KG-Chart LE for Cross Stitch)