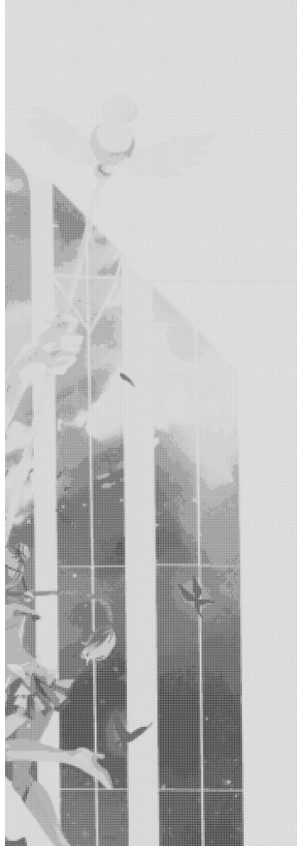
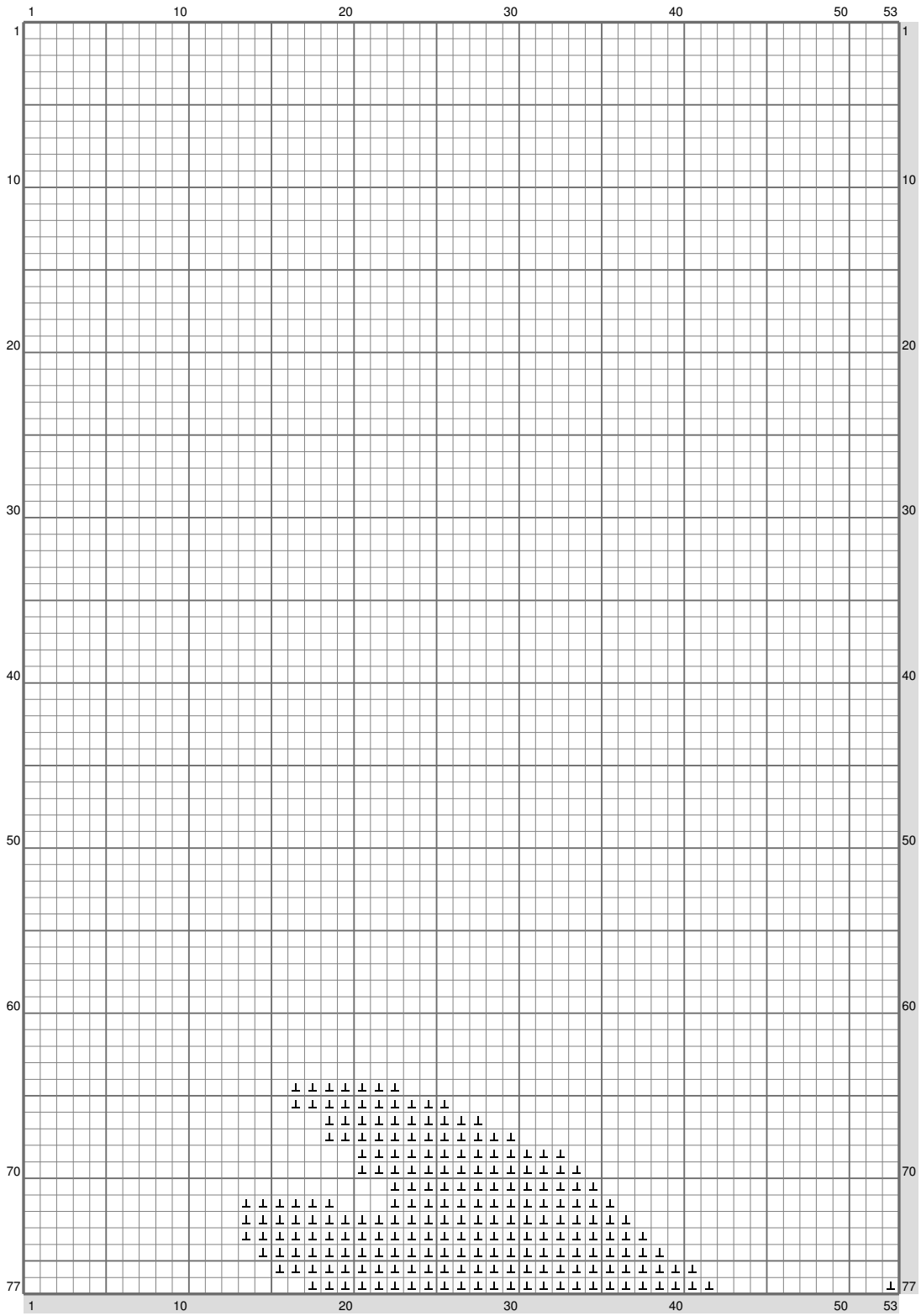


ESM Part D

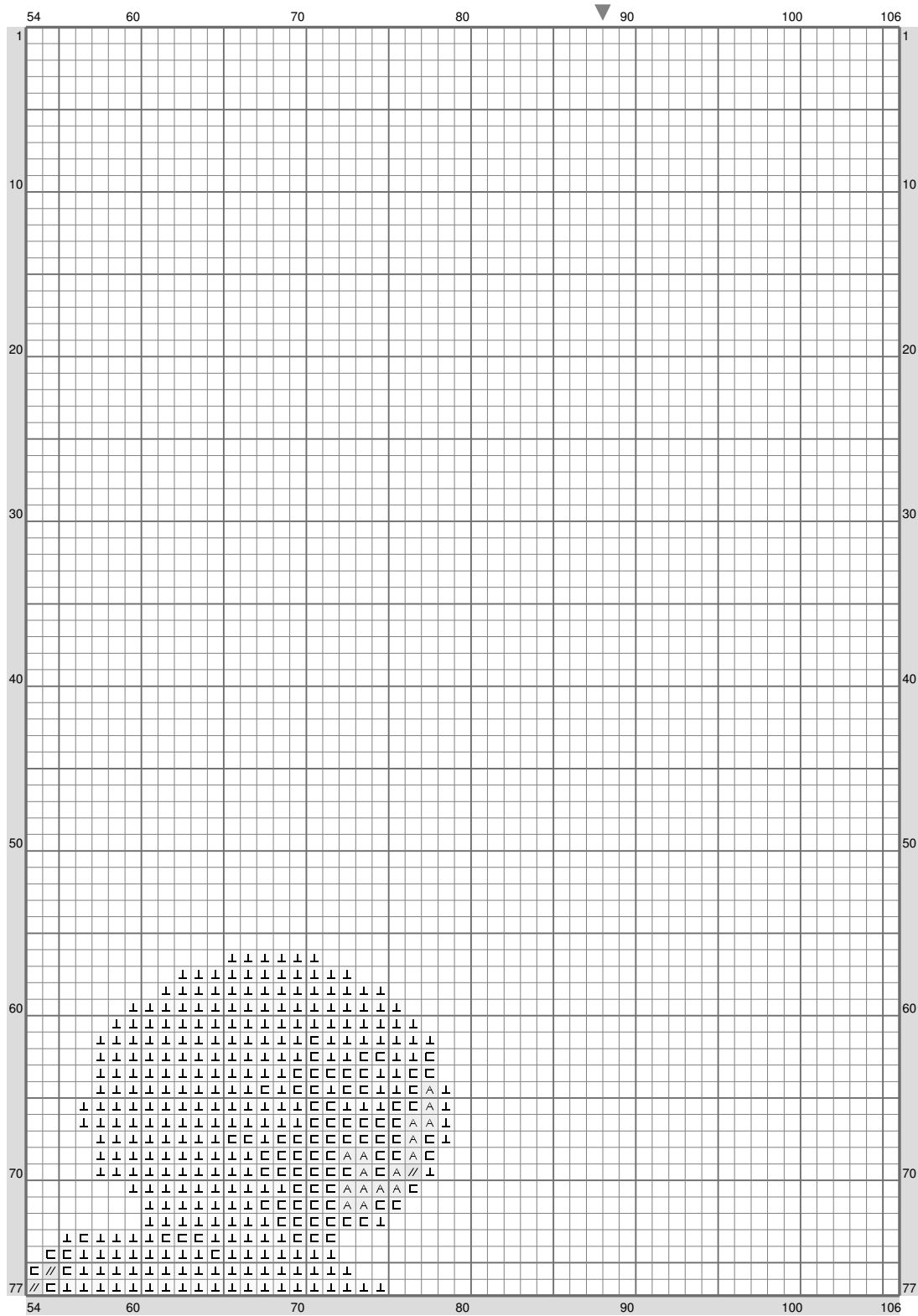


ESM Part D



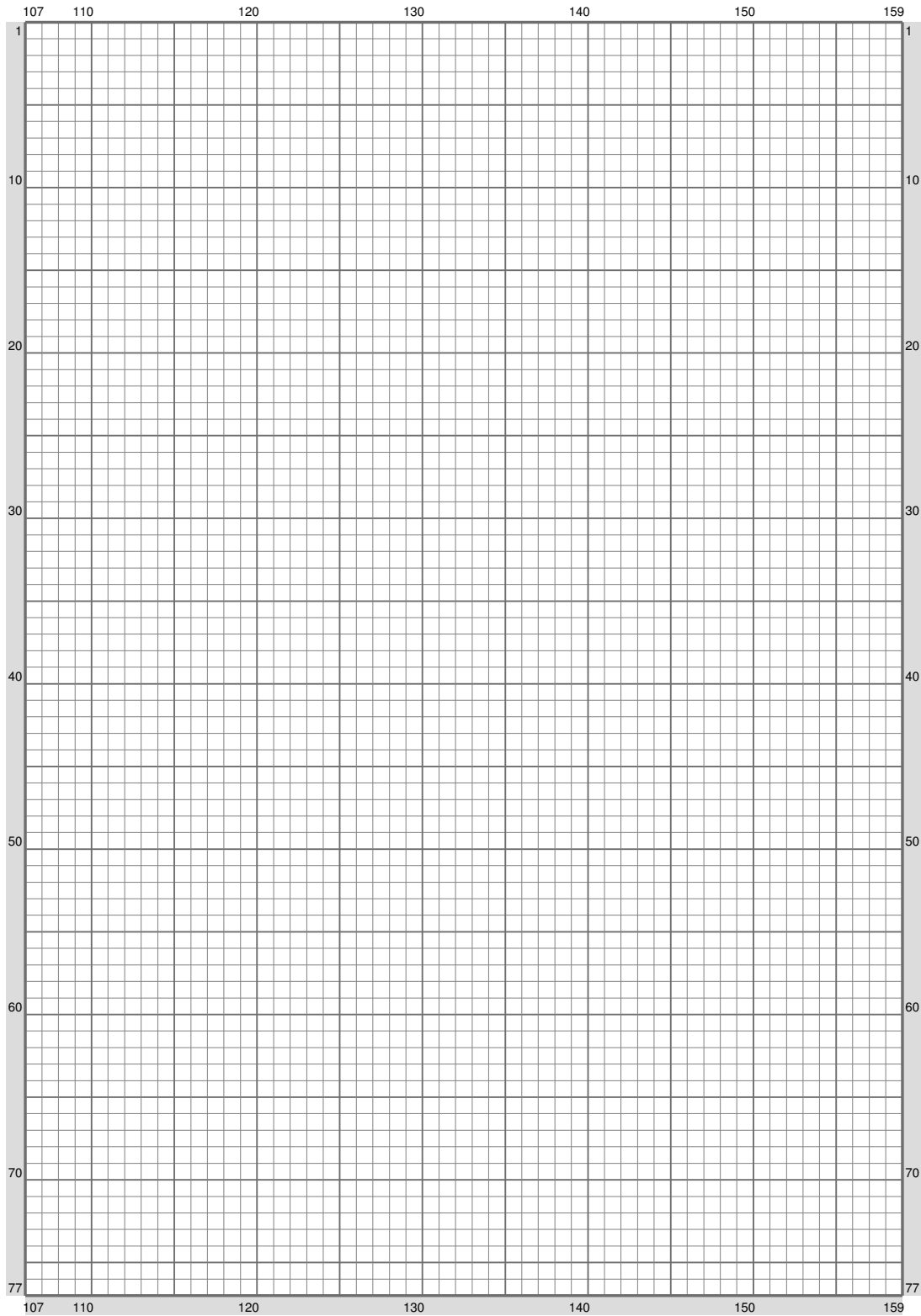
(This chart is printed using KG-Chart LE for Cross Stitch.

ESM Part D



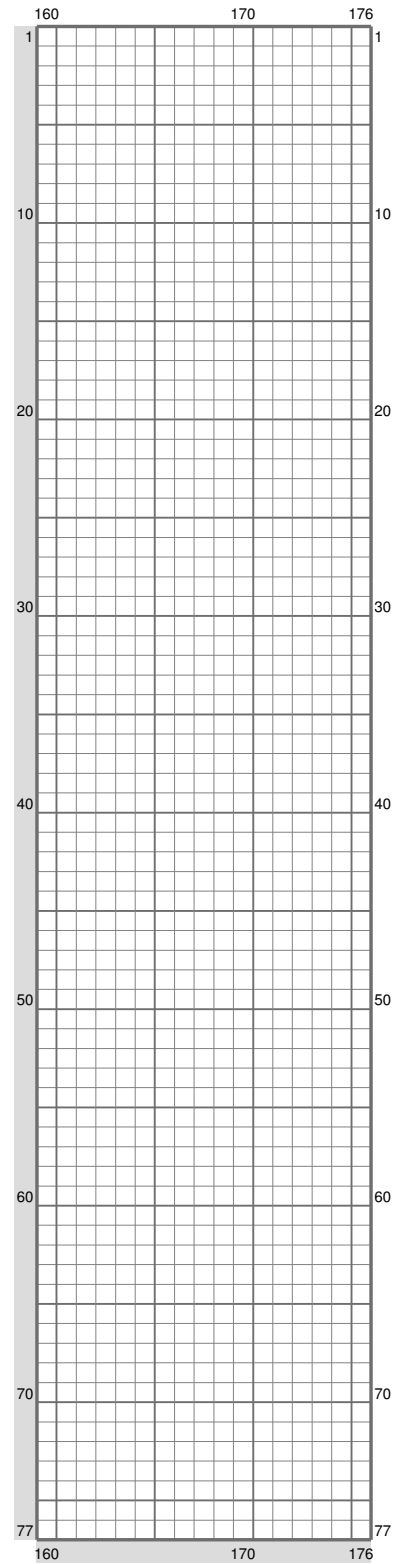
(This chart is printed using KG-Chart LE for Cross Stitch.)

ESM Part D



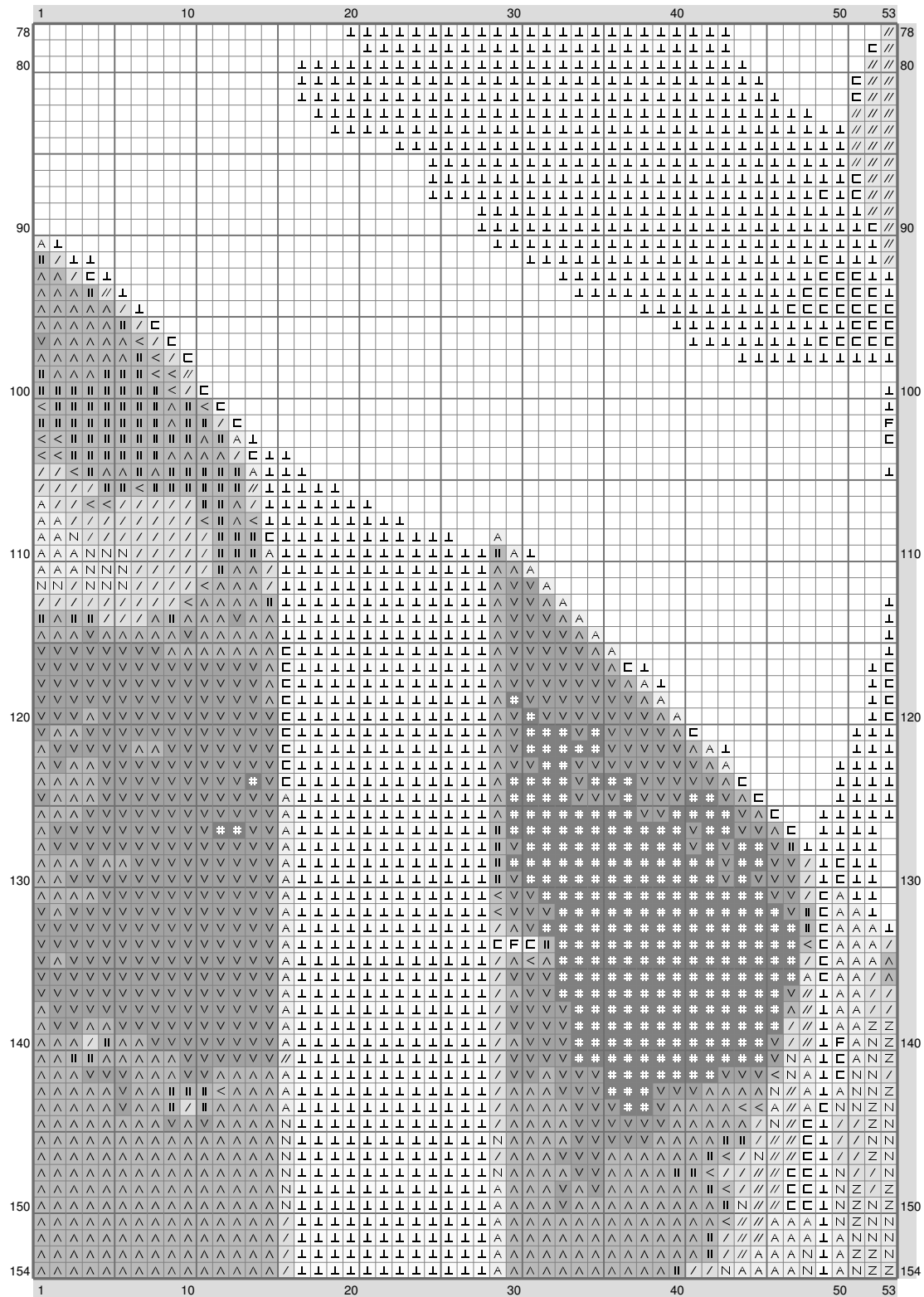
(This chart is printed using KG-Chart LE for Cross Stitch.)

ESM Part D



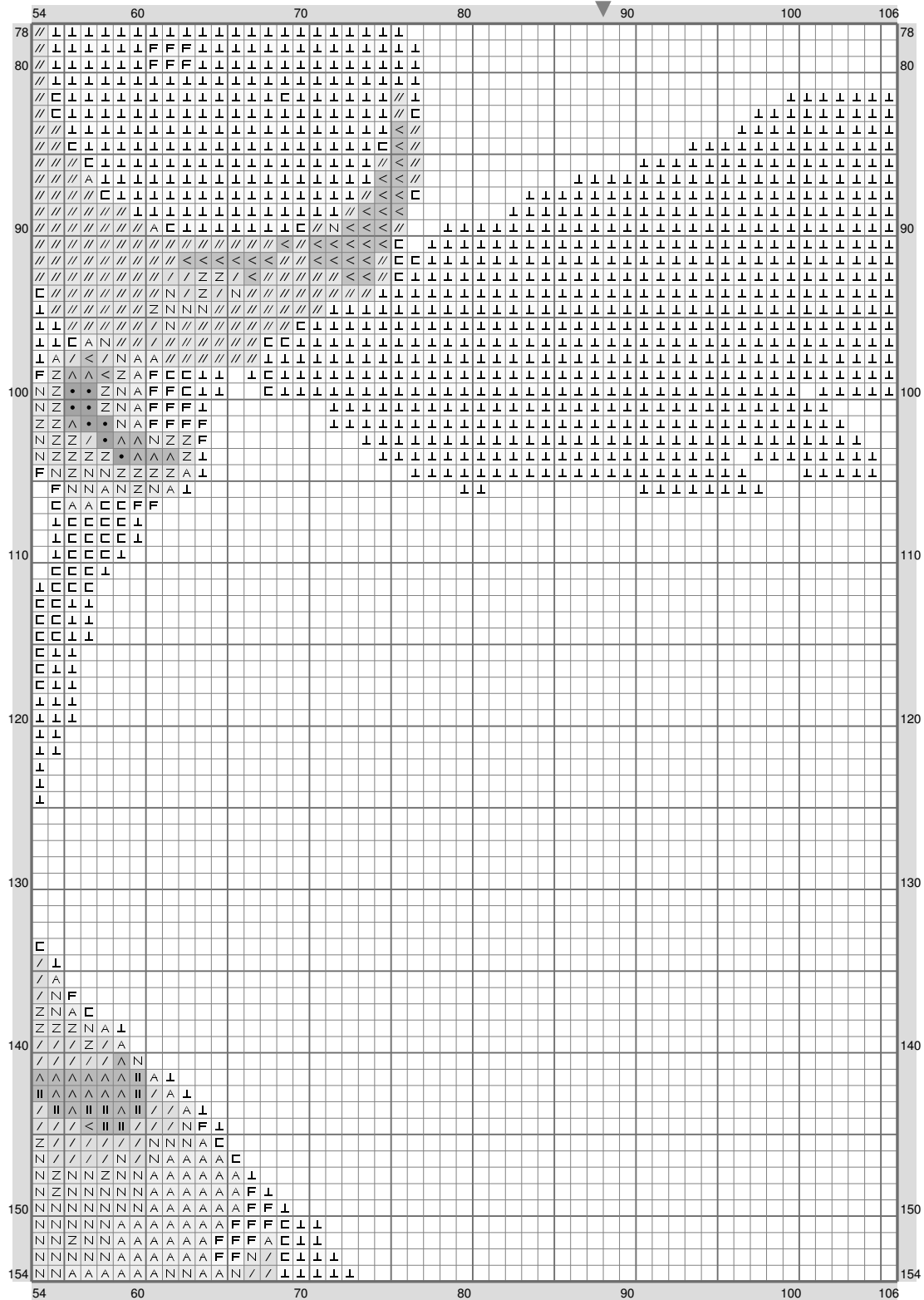
(This chart is printed using KG-Chart LE for Cross Stitch.)

ESM Part D



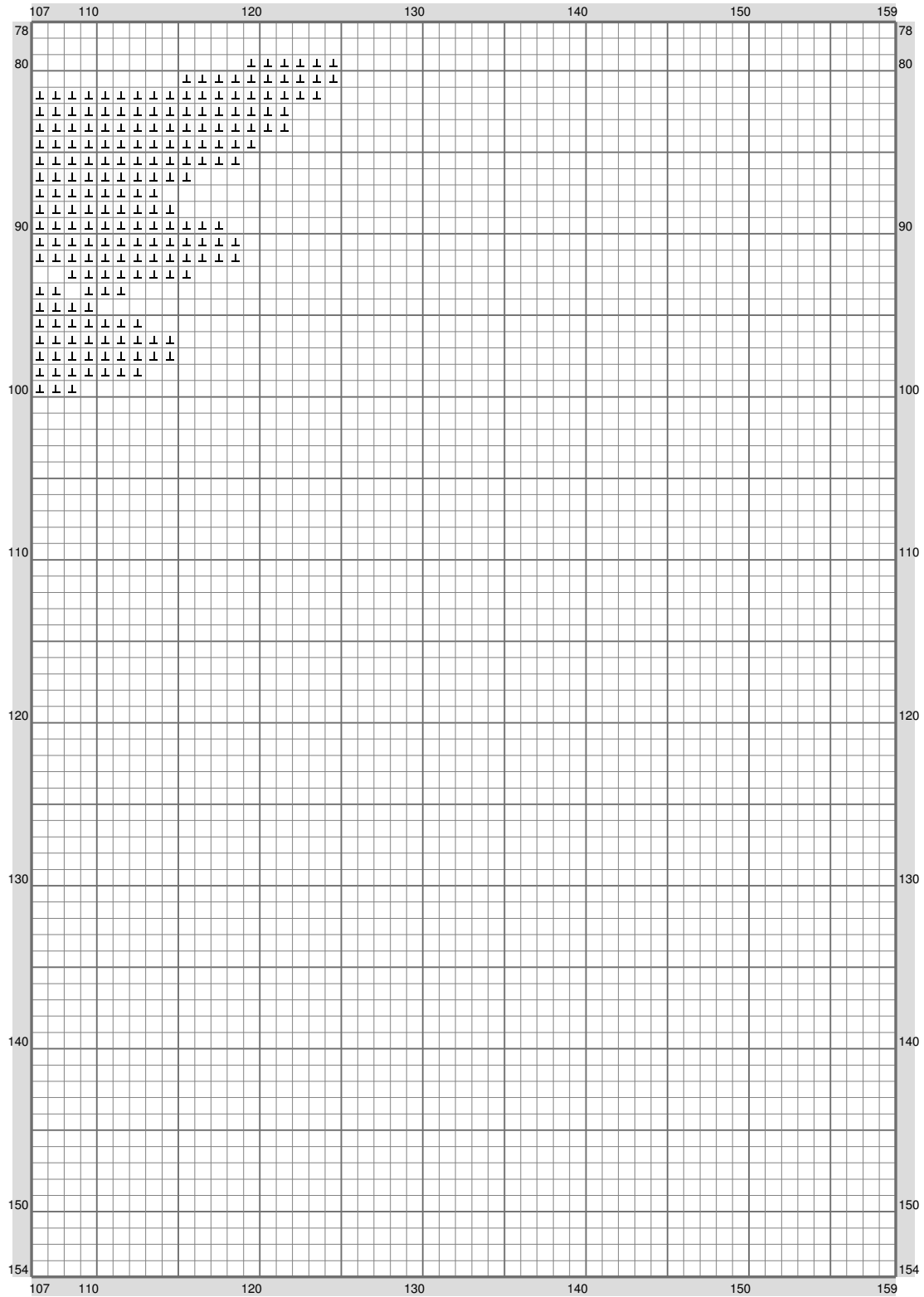
(This chart is printed using KG-Chart LE for Cross Stitch.)

ESM Part D



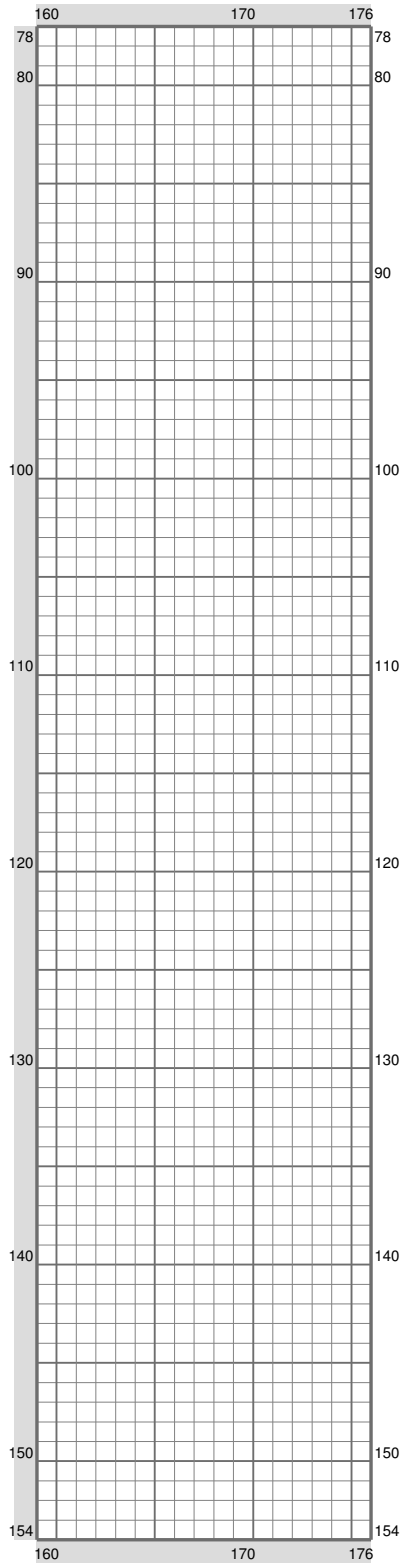
(This chart is printed using KG-Chart LE for Cross Stitch.)

ESM Part D



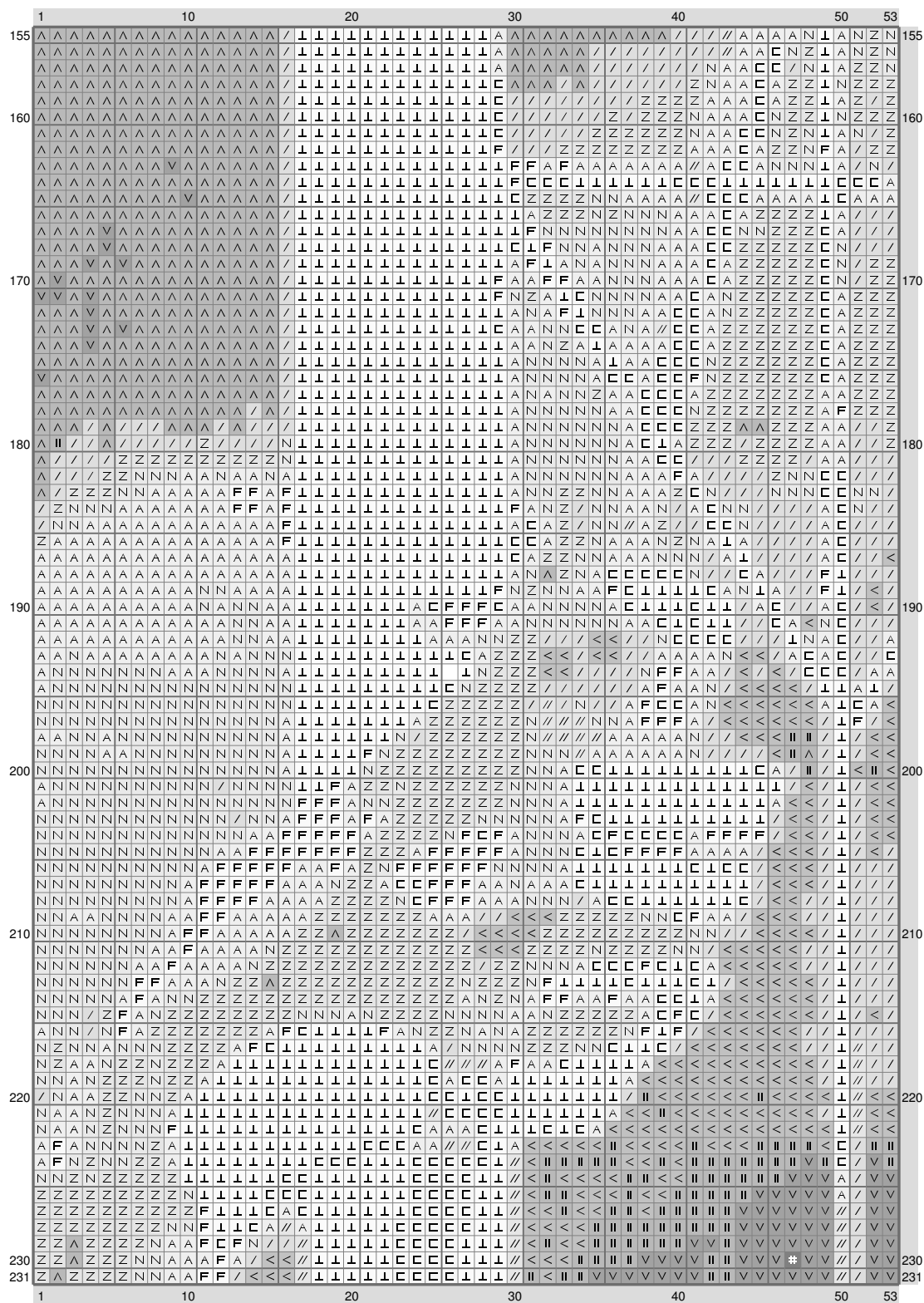
(This chart is printed using KG-Chart LE for Cross Stitch.)

ESM Part D



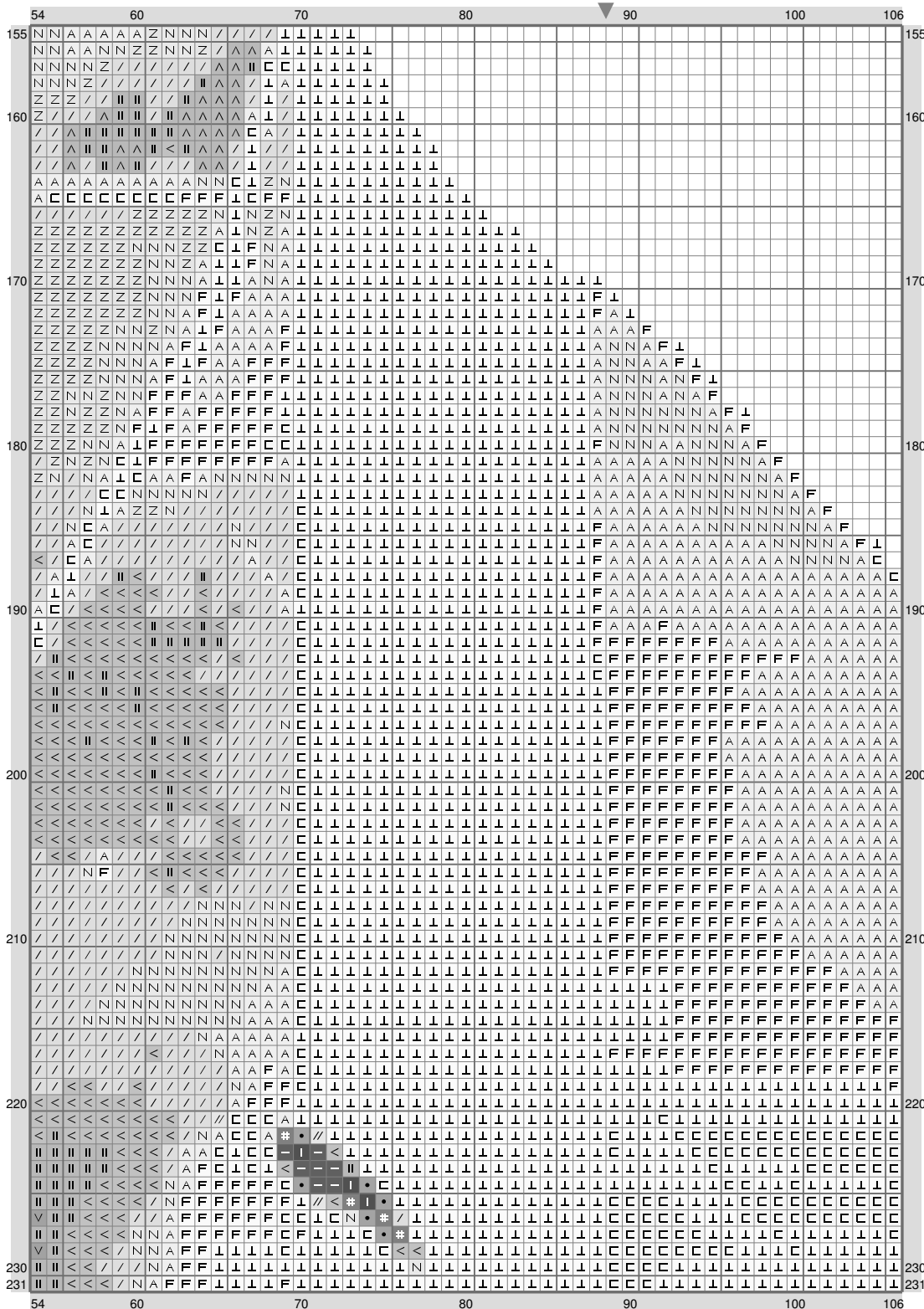
(This chart is printed using KG-Chart LE for Cross Stitch.)

ESM Part D



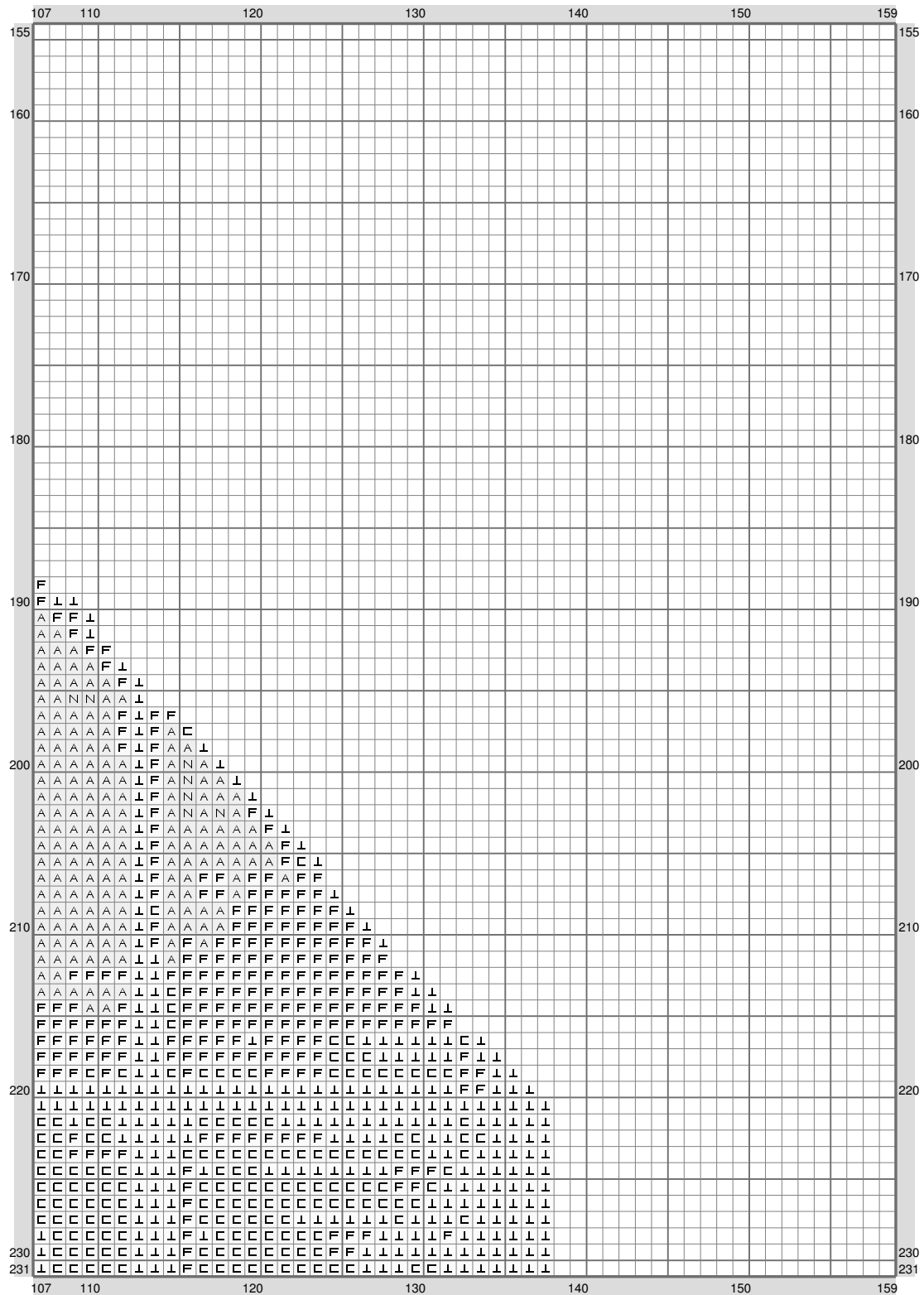
(This chart is printed using KG-Chart LE for Cross Stitch.)

ESM Part D



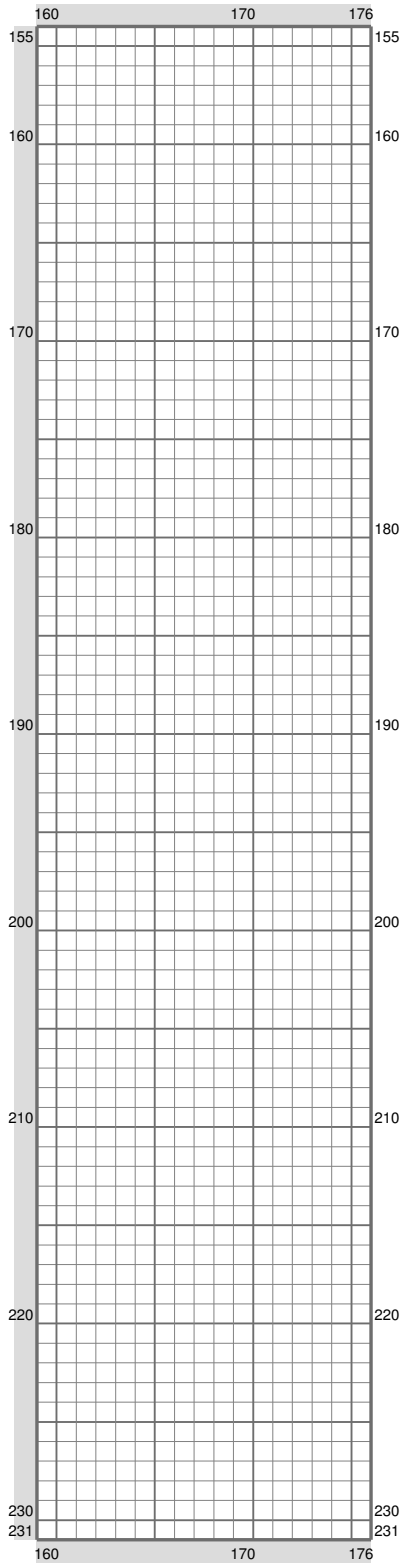
(This chart is printed using KG-Chart LE for Cross Stitch.)

ESM Part D



(This chart is printed using KG-Chart LE for Cross Stitch.)

ESM Part D



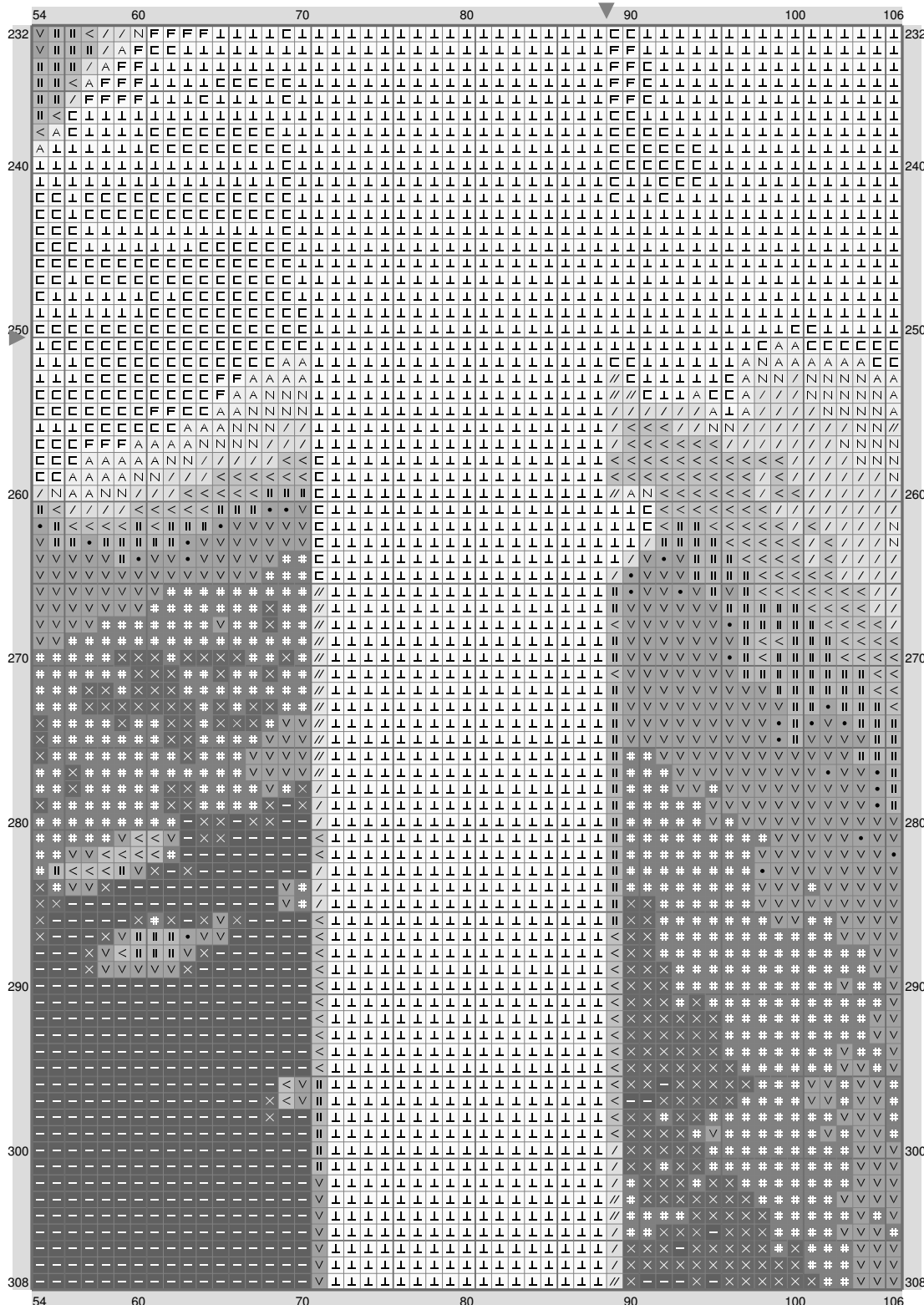
(This chart is printed using KG-Chart LE for Cross Stitch.)

ESM Part D



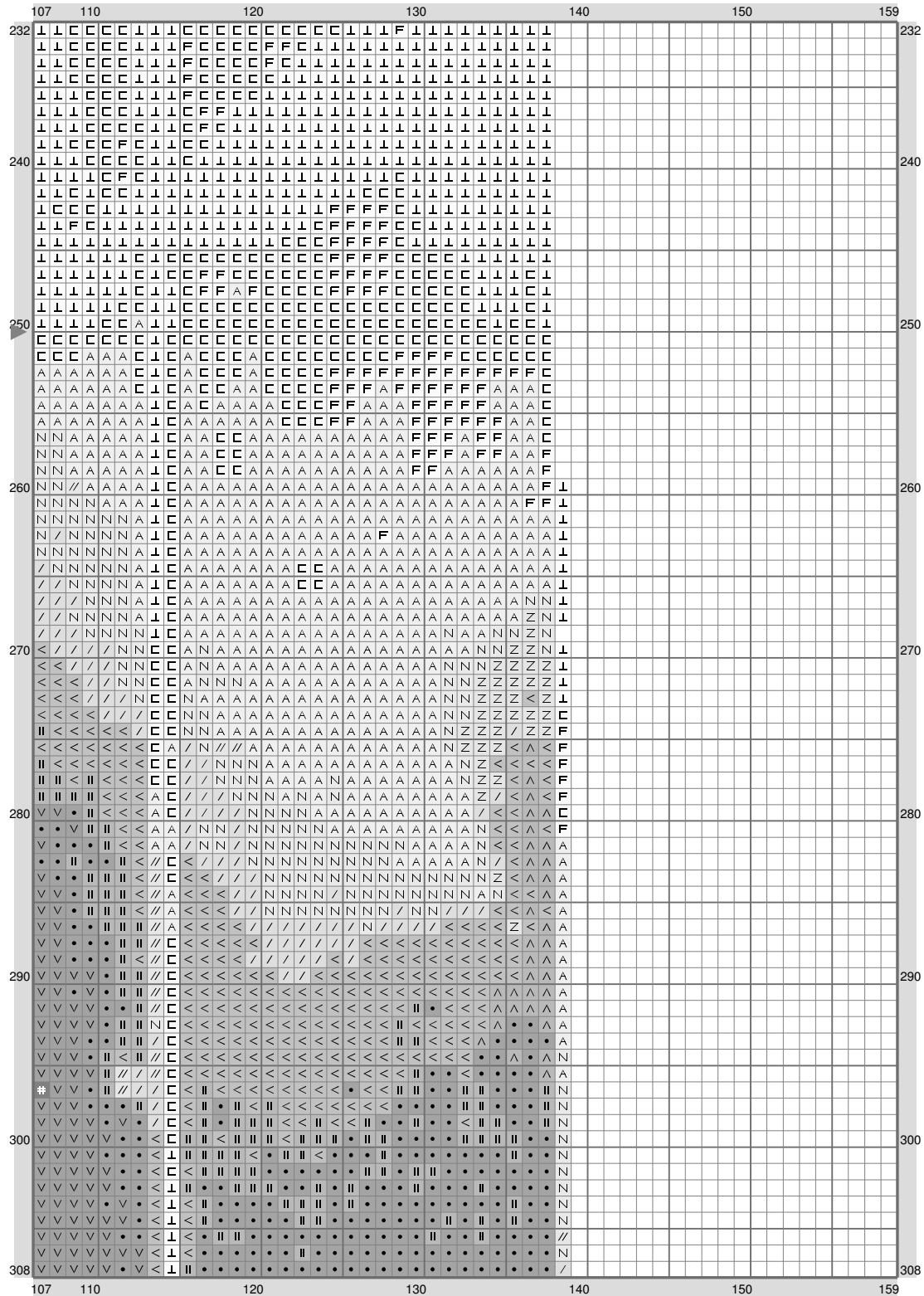
(This chart is printed using KG-Chart LE for Cross Stitch.)

ESM Part D

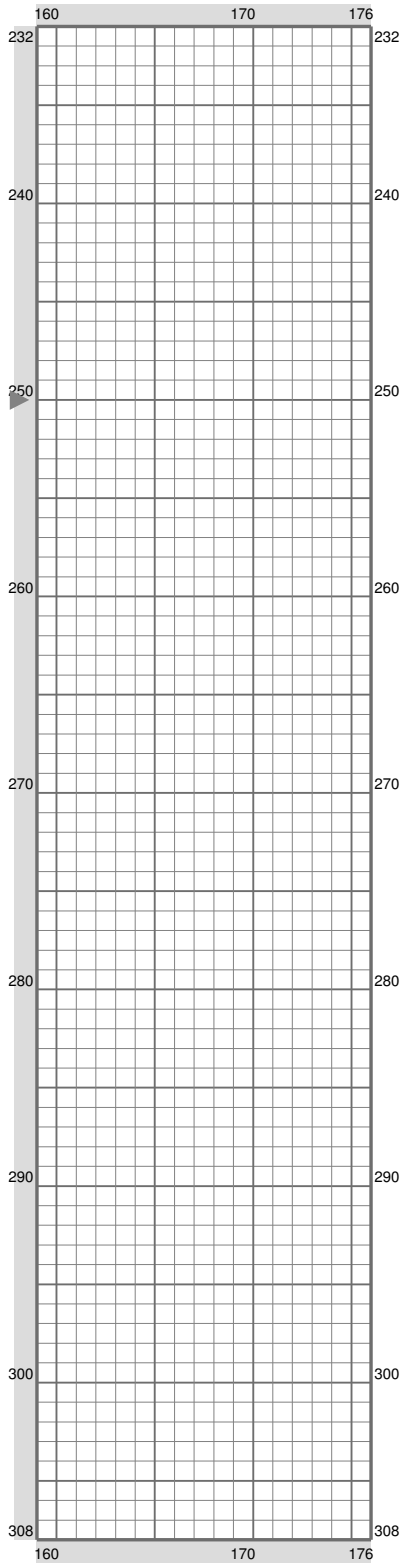


(This chart is printed using KG-Chart LE for Cross Stitch.

ESM Part D

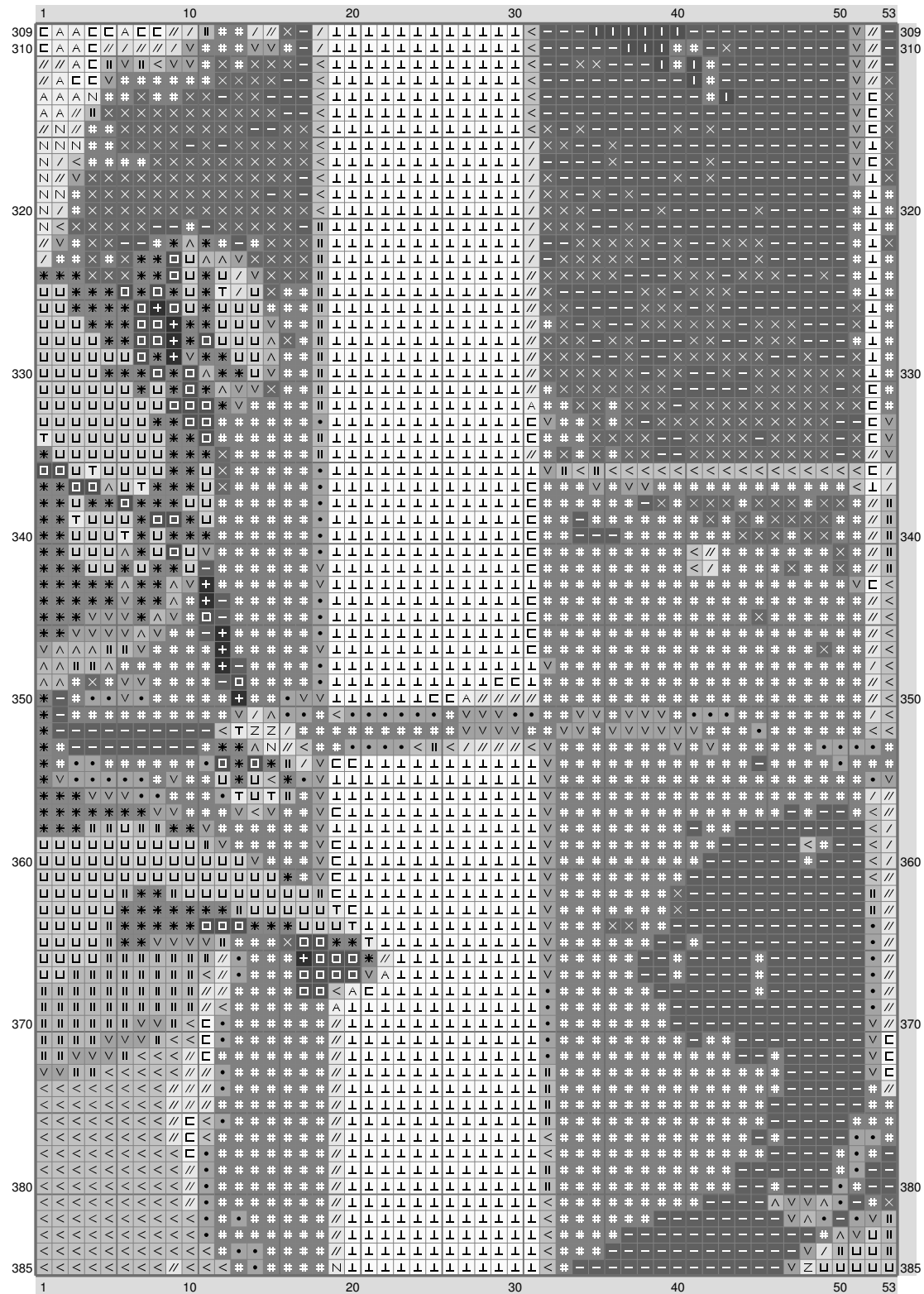


ESM Part D



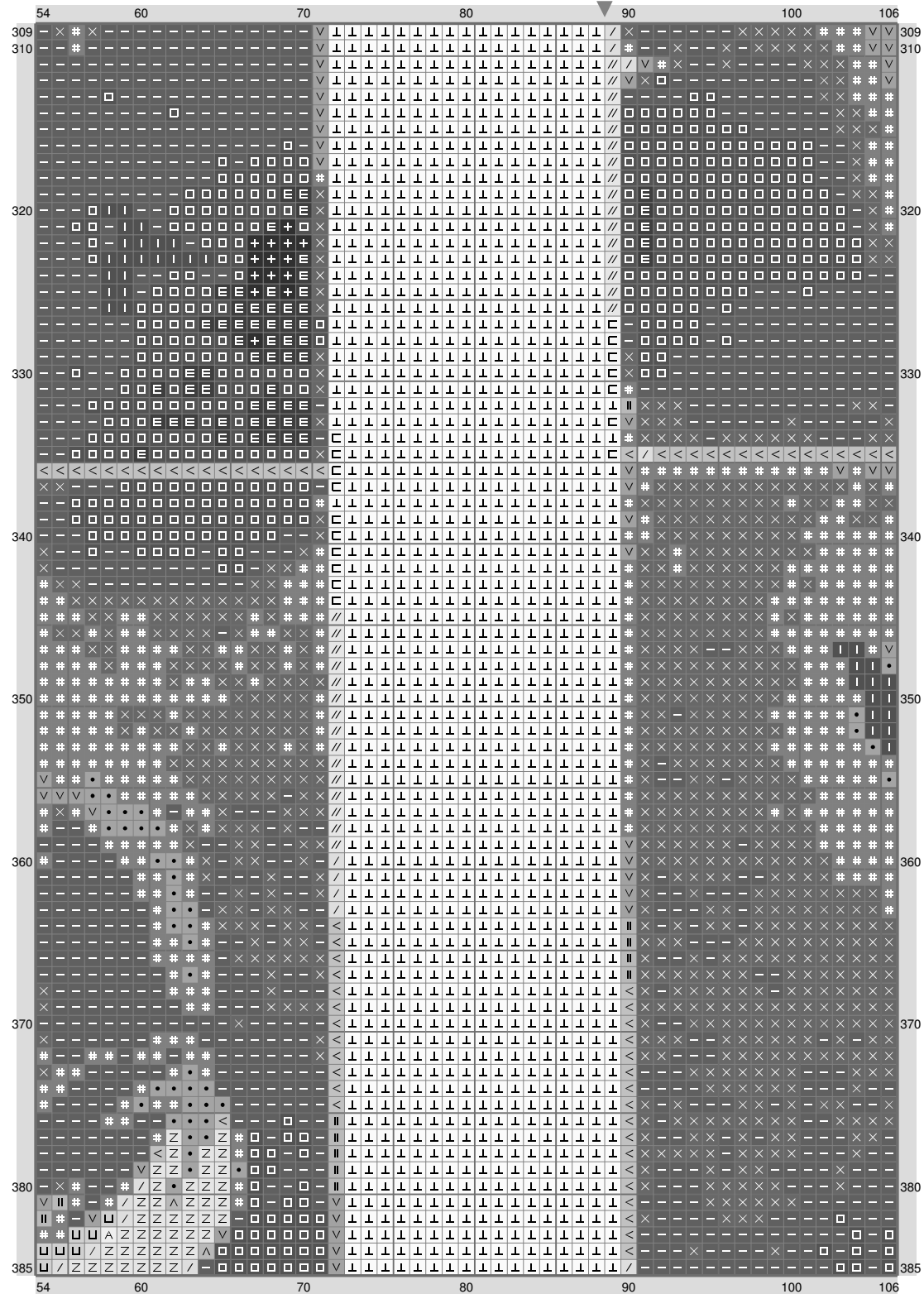
(This chart is printed using KG-Chart LE for Cross Stitch.)

ESM Part D



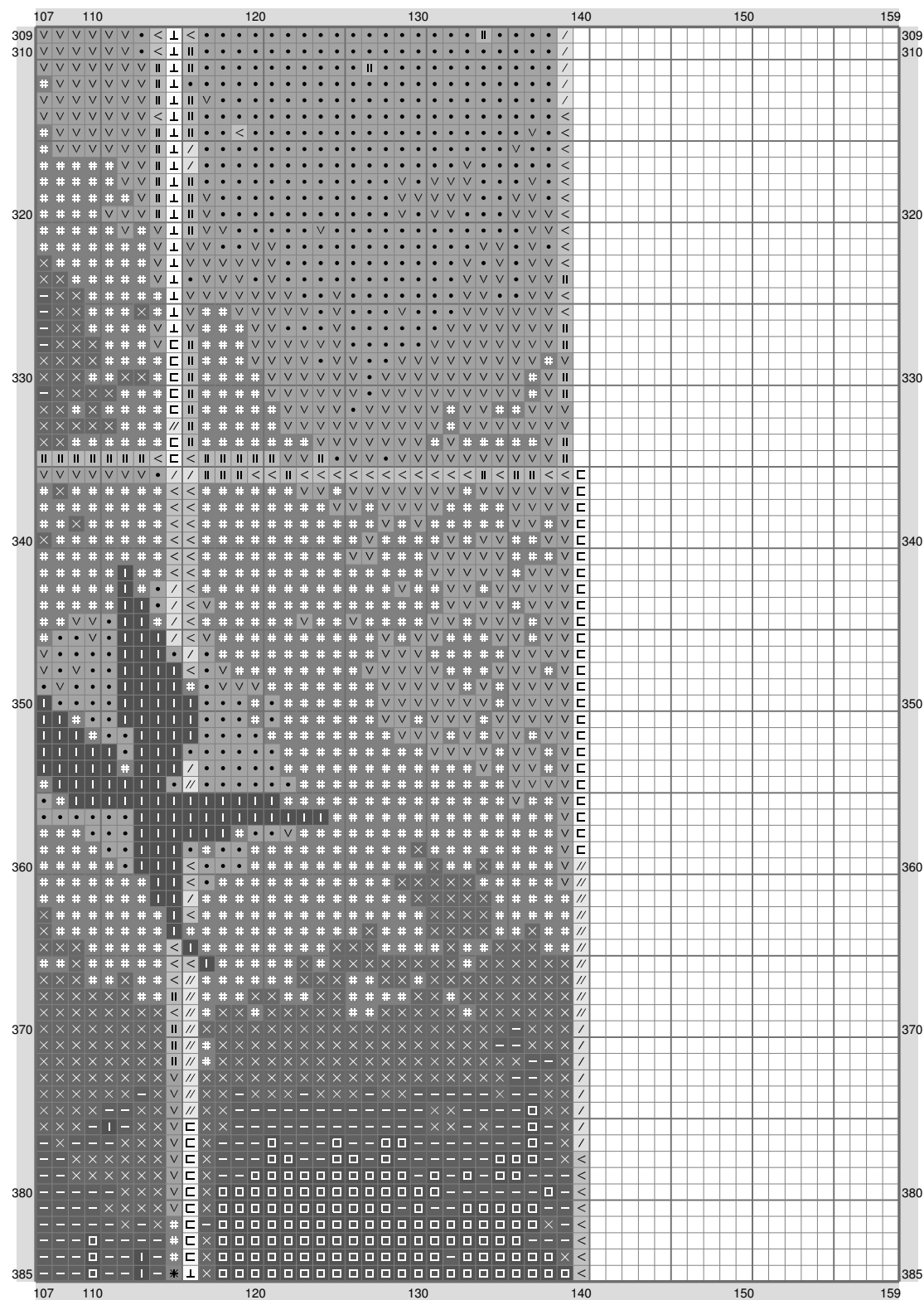
(This chart is printed using KG-Chart LE for Cross Stitch.)

ESM Part D

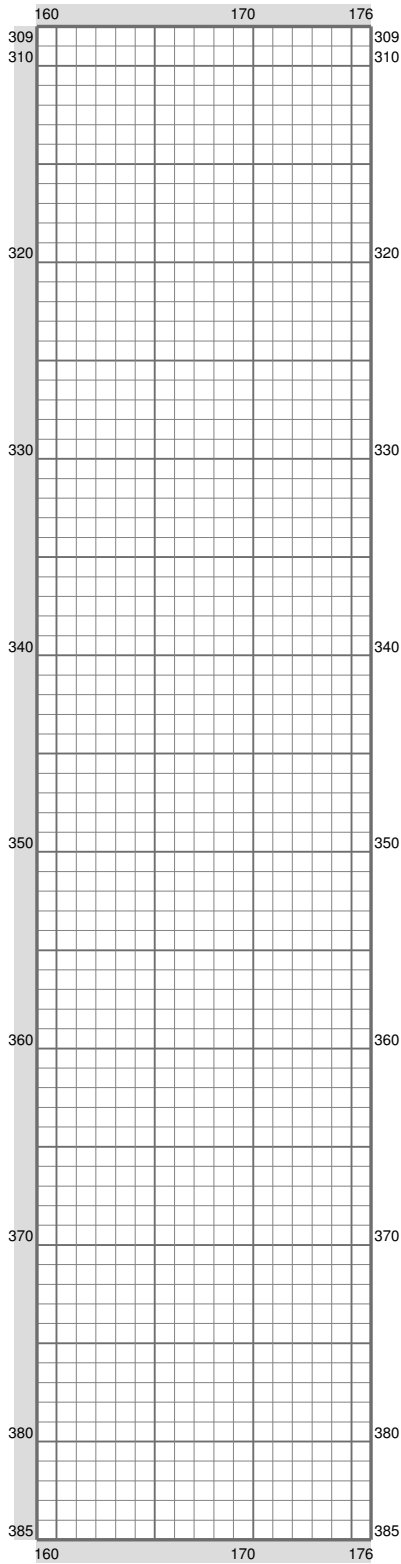


(This chart is printed using KG-Chart LE for Cross Stitch.)

ESM Part D

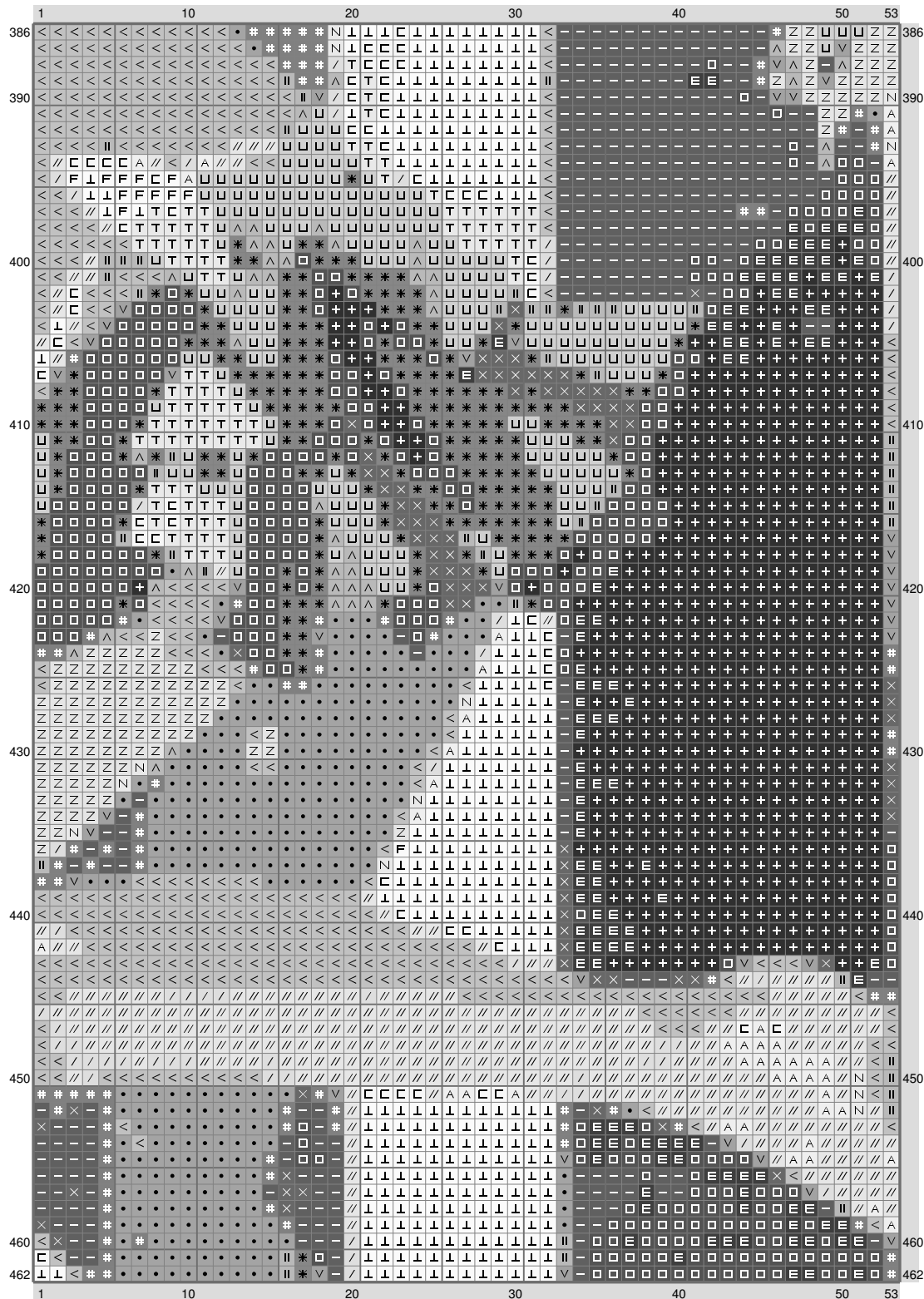


ESM Part D



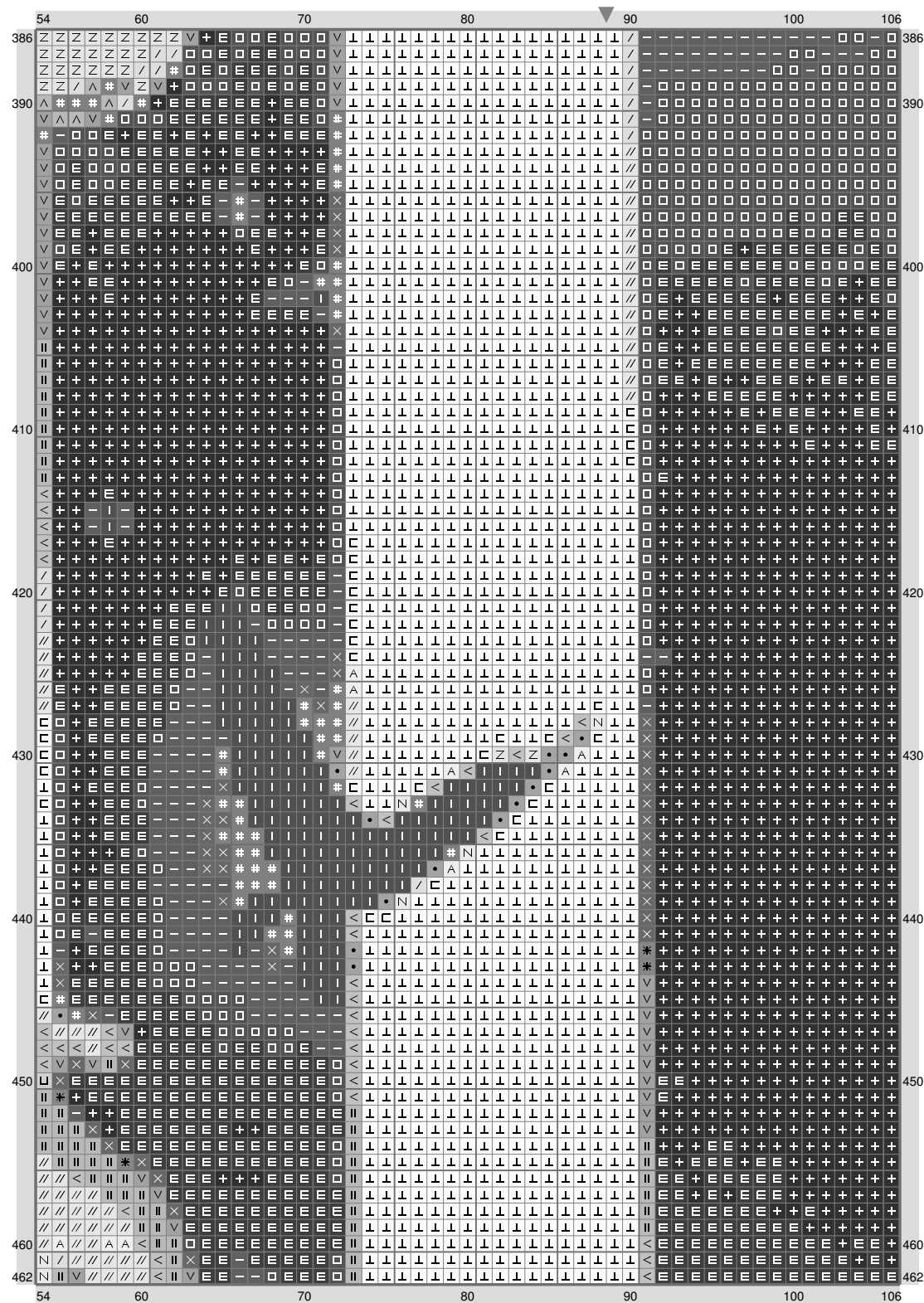
(This chart is printed using KG-Chart LE for Cross Stitch.)

ESM Part D



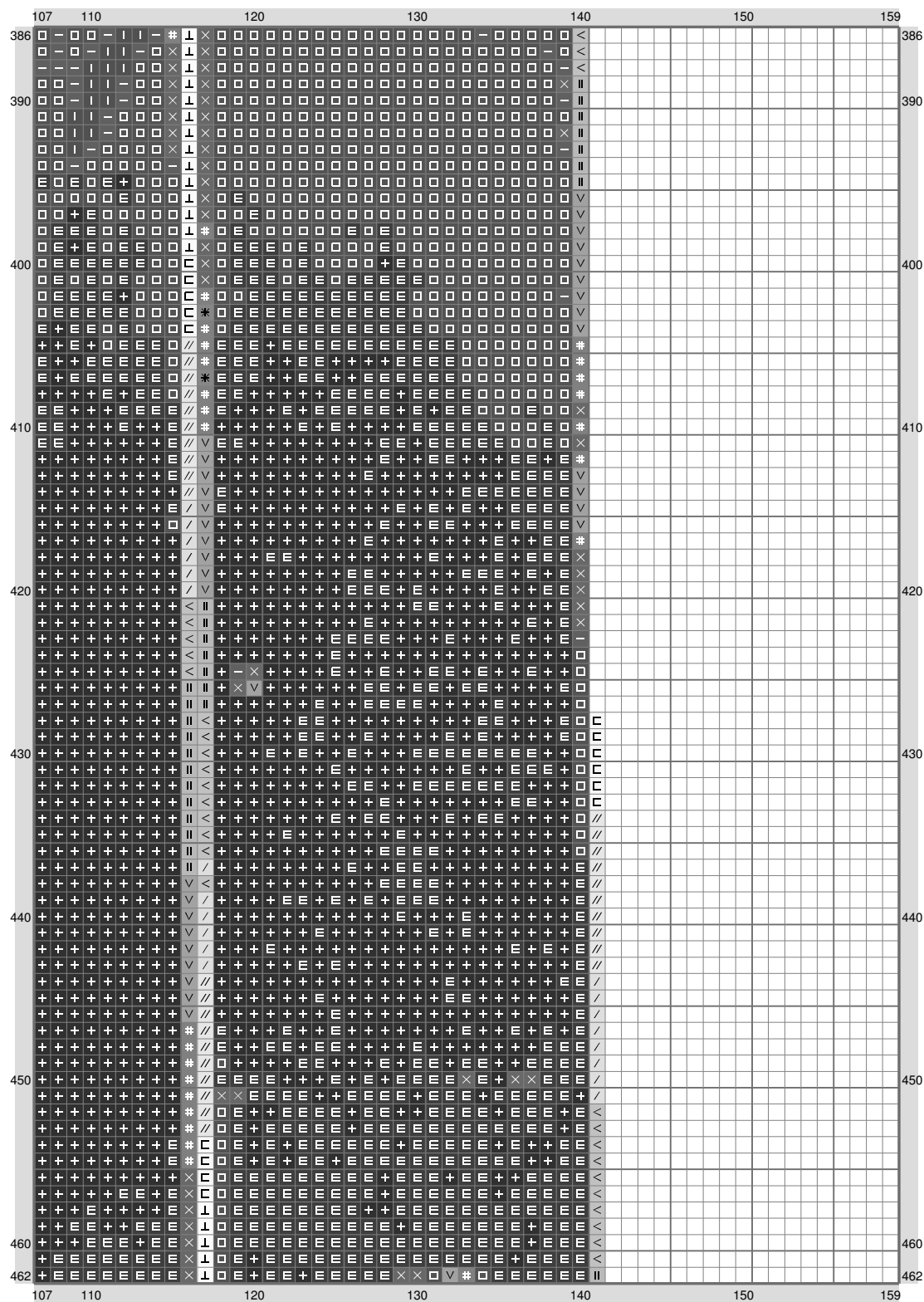
(This chart is printed using KG-Chart LE for Cross Stitch.)

ESM Part D

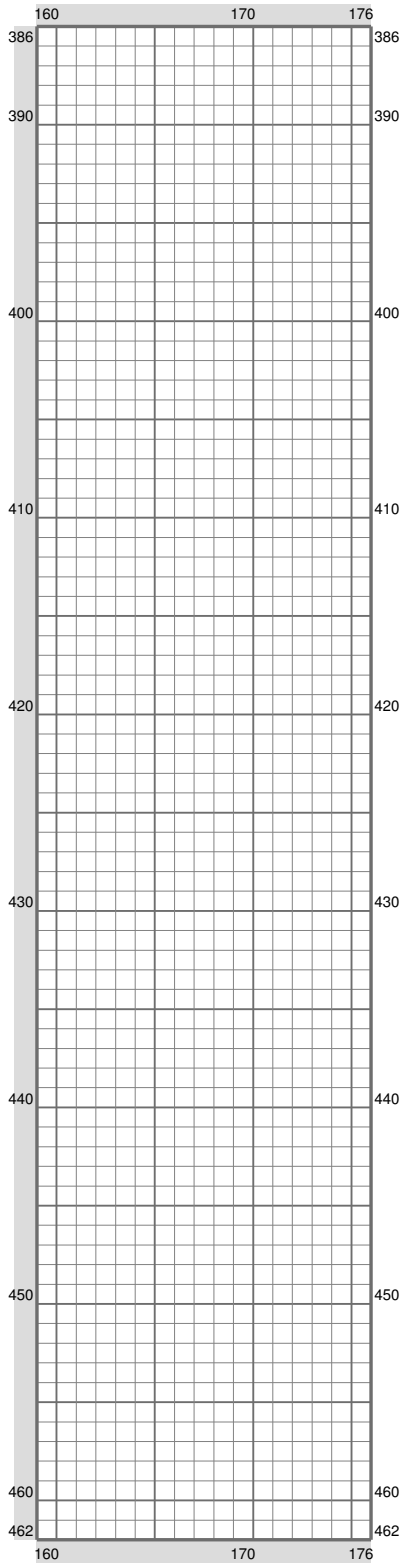


(This chart is printed using KG-Chart LE for Cross Stitch.)

ESM Part D

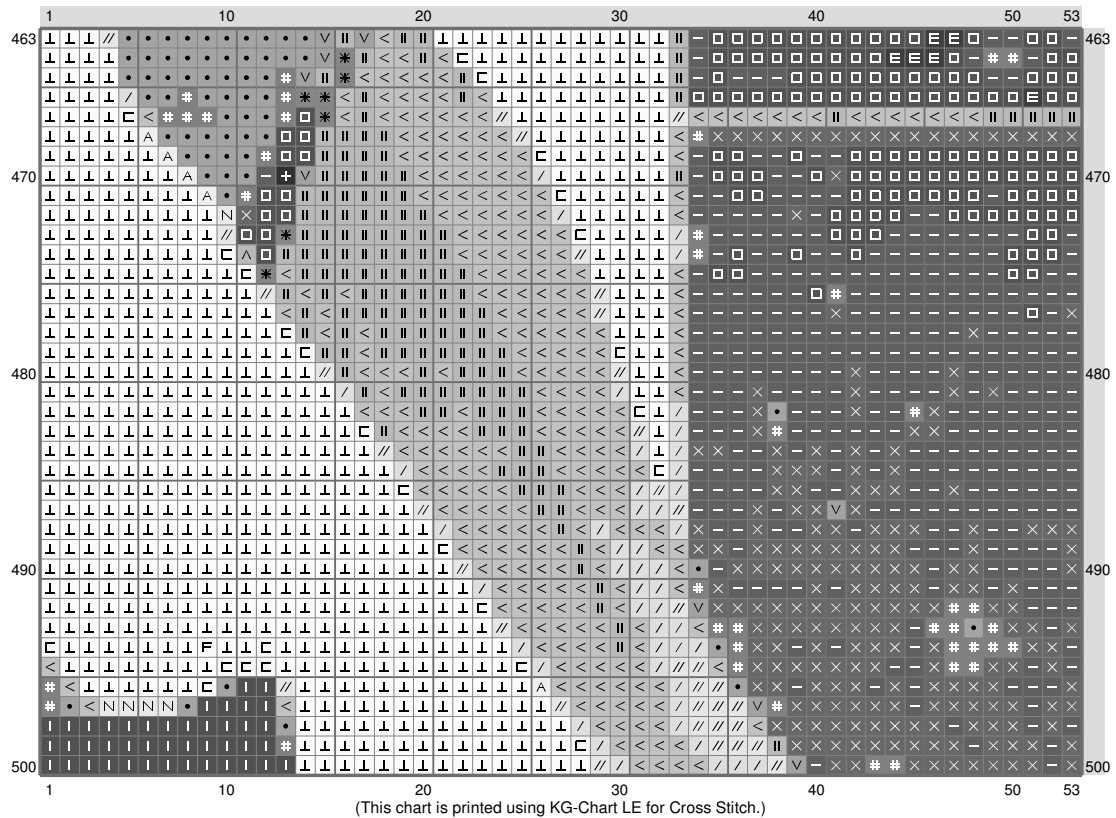


ESM Part D

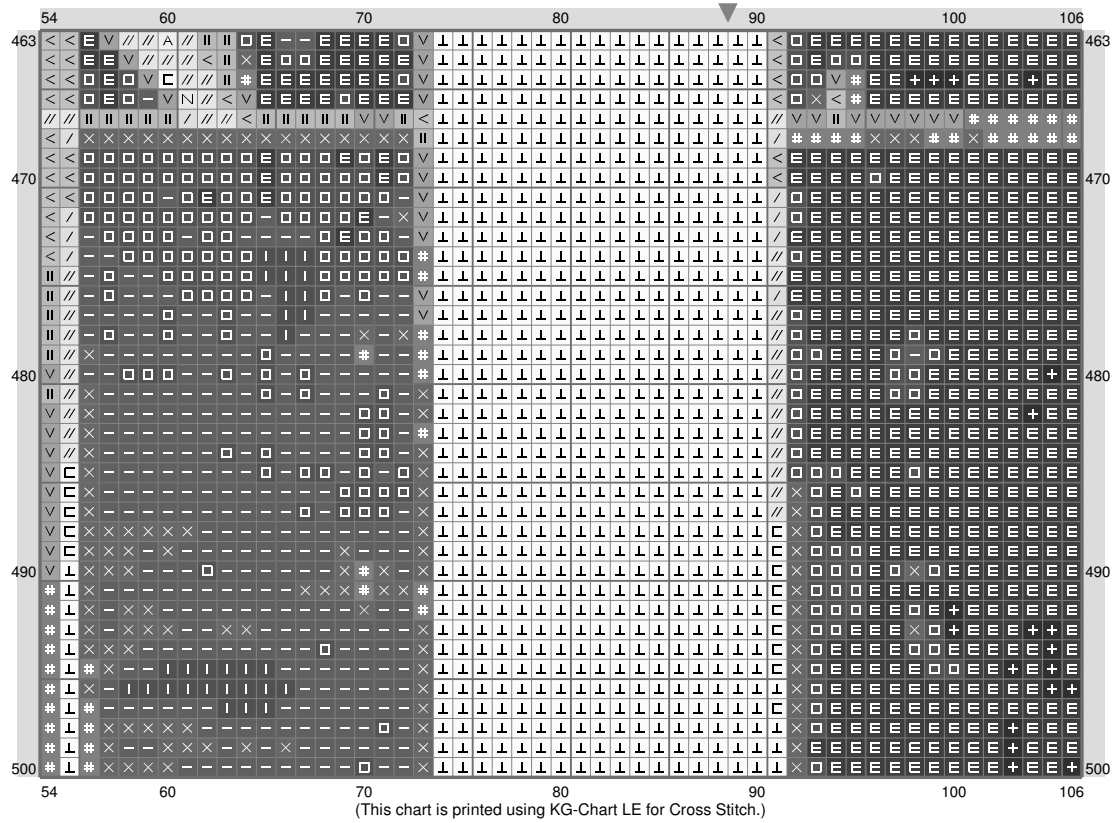


(This chart is printed using KG-Chart LE for Cross Stitch.)

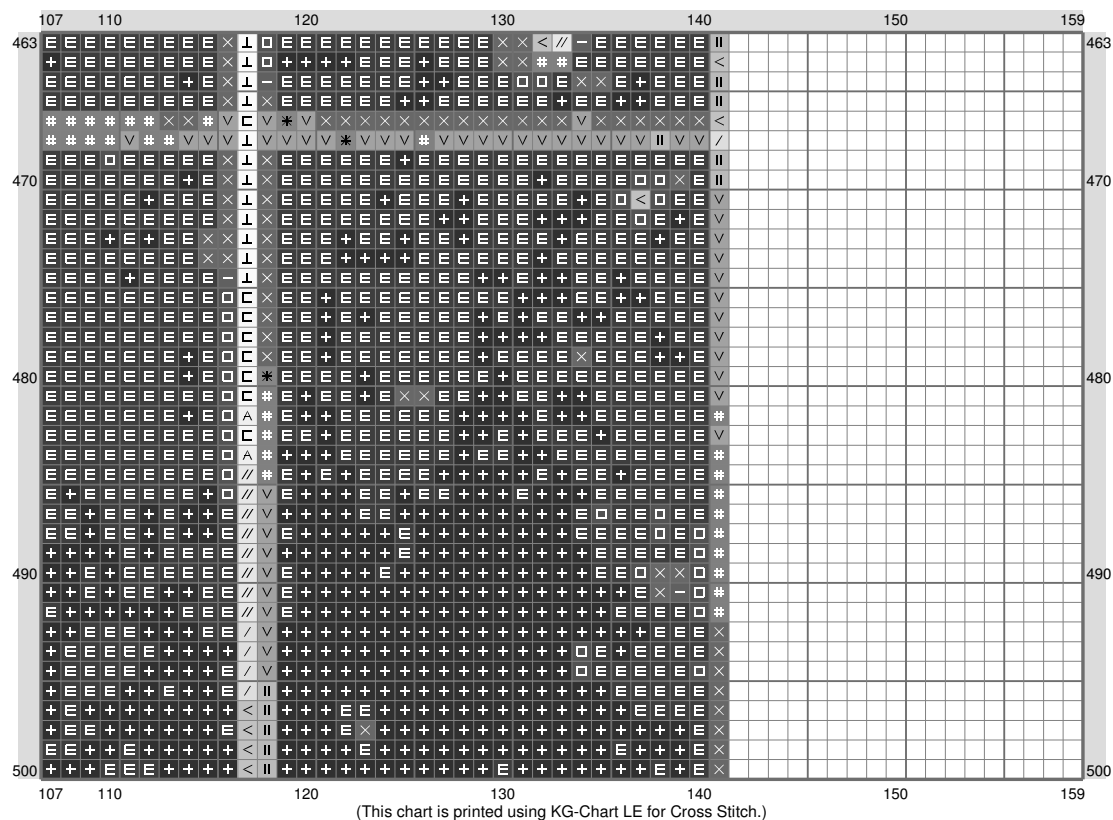
ESM Part D



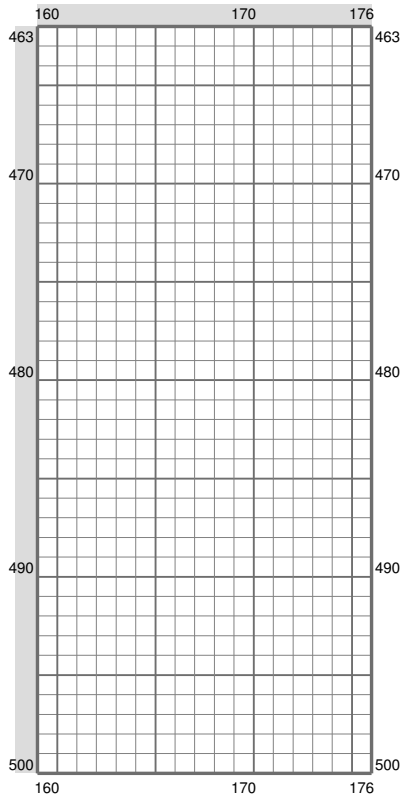
ESM Part D



ESM Part D



ESM Part D



Stitch Count: 176w x 500h

Finished Size: 22.35 cm x 63.5 cm (20 ct./inch)

Cloth: Aida

Cloth's Color: White

of colors: 23 Colors

Color Table (DMC)

Cross Stitch

	823	(3473 ct)
	336	(2581 ct)
	3799	(2193 ct)
	3740	(3442 ct)
	3041	(2281 ct)
	502	(400 ct)
	817	(437 ct)
	3860	(3357 ct)
	3861	(1258 ct)
	840	(2500 ct)
	3782	(1025 ct)
	647	(1431 ct)
	452	(2395 ct)
	955	(422 ct)
	844	(1437 ct)
	745	(901 ct)
	739	(1343 ct)
	762	(1033 ct)
	ECRU	(2251 ct)
	3865	(2258 ct)
	712	(1022 ct)
	3841	(104 ct)
	BLANC	(13740 ct)

(This chart is printed using Chart E for Cross Stitch.)