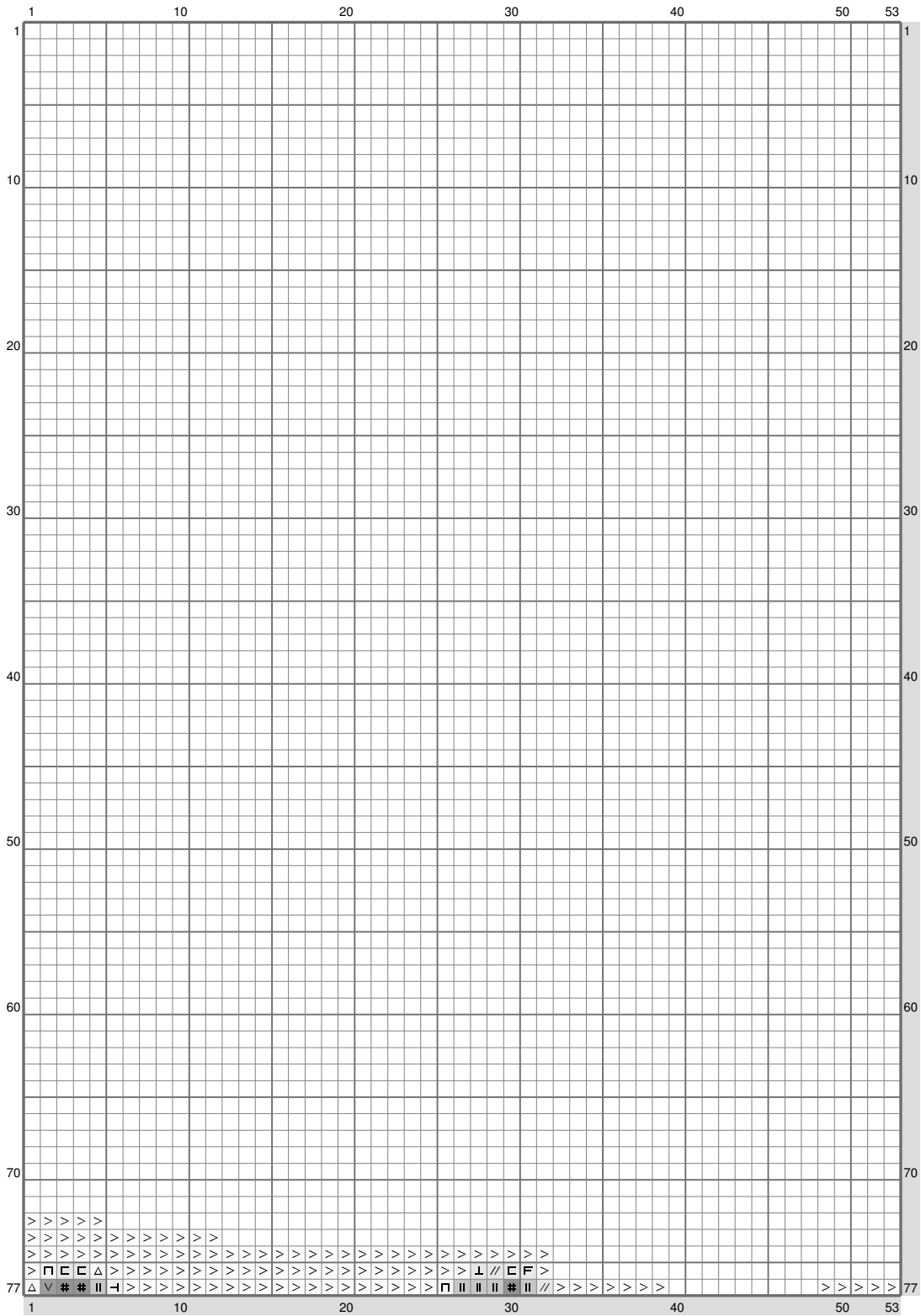


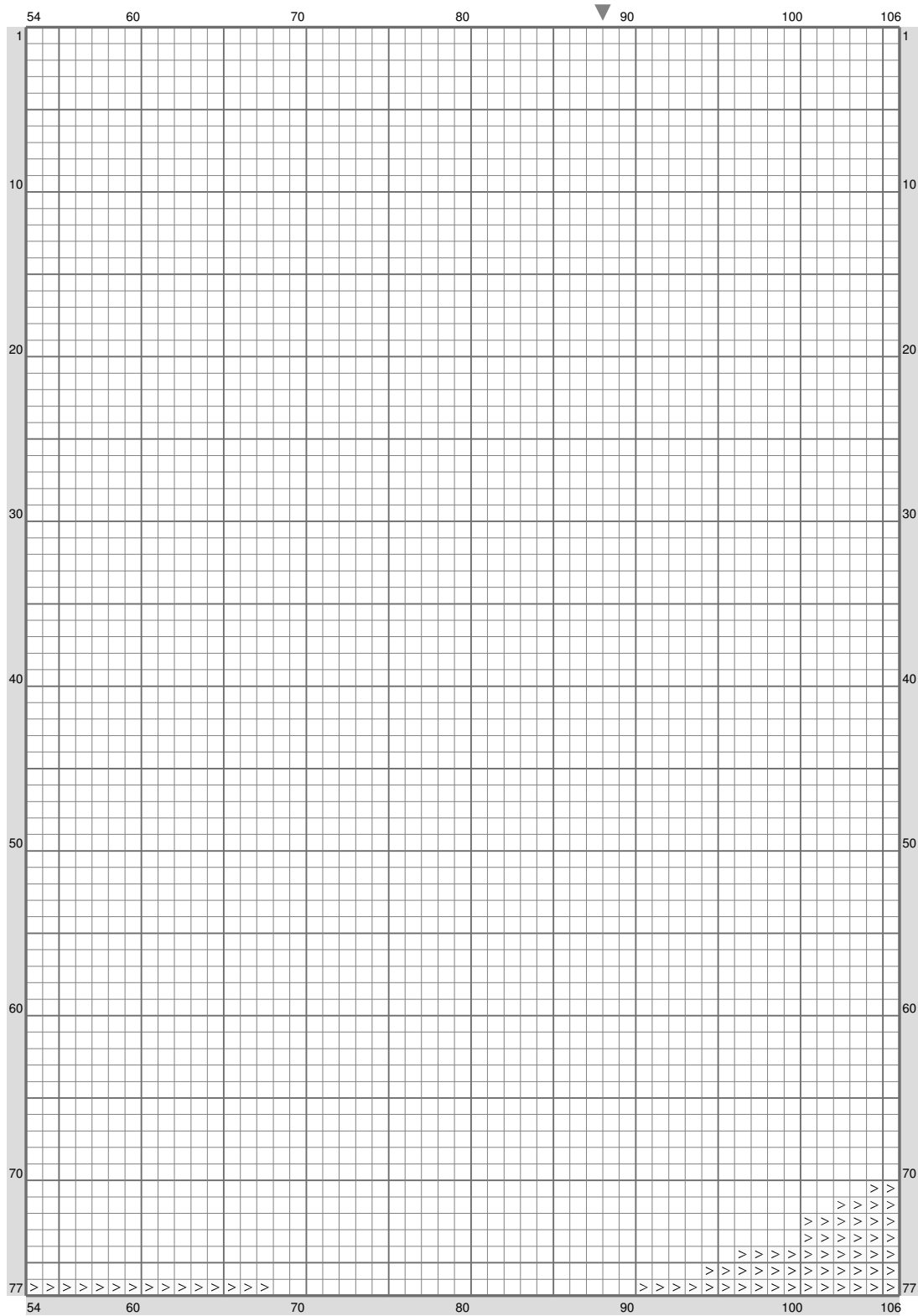
ESM Part C



ESM Part C

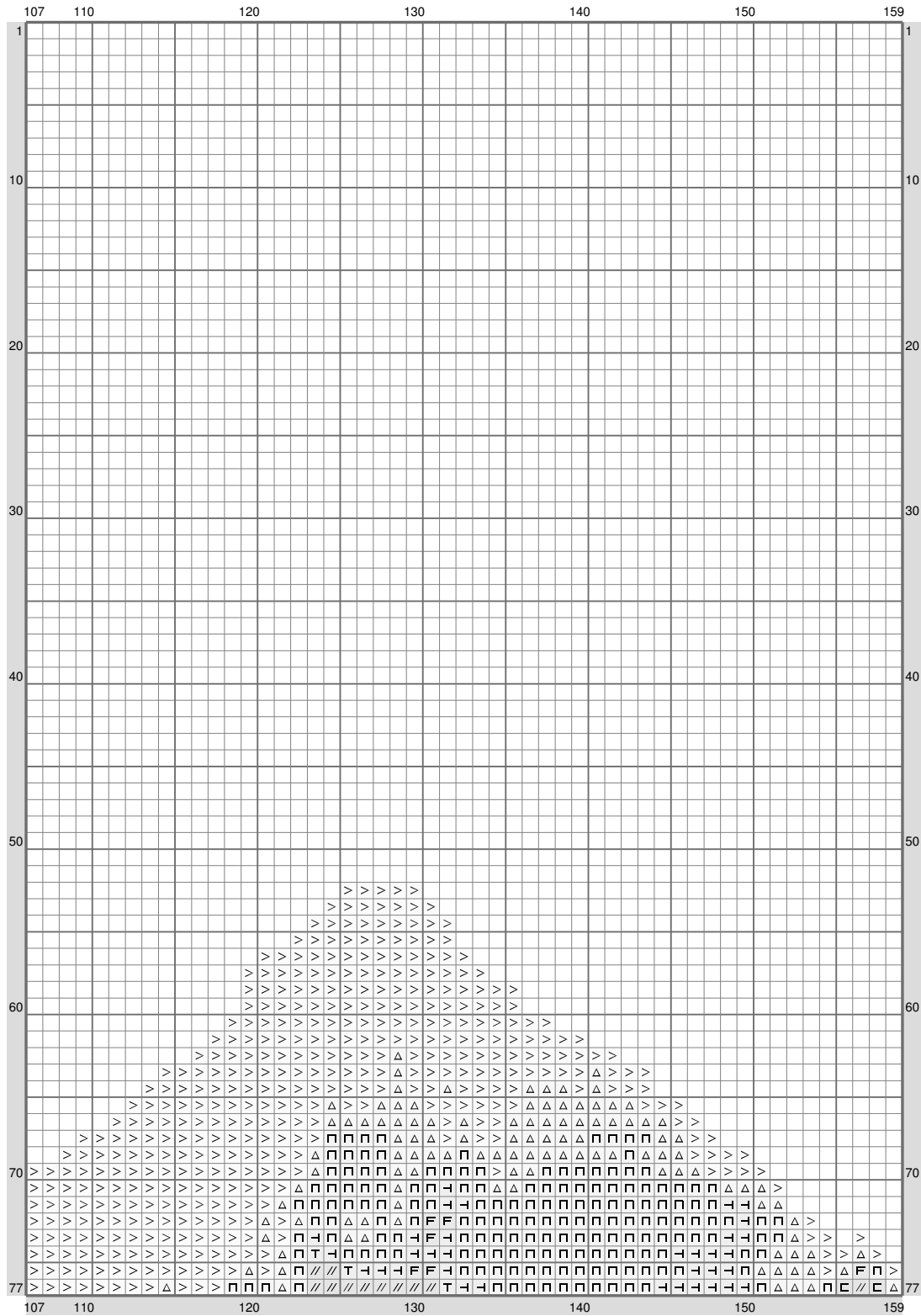


ESM Part C



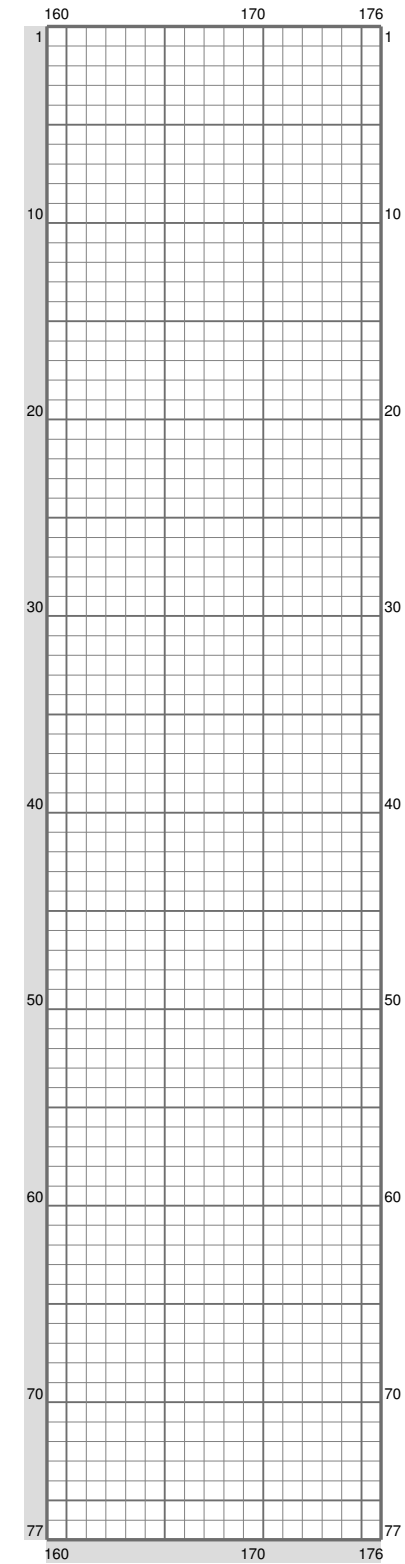
(This chart is printed using KG-Chart LE for Cross Stitch.)

ESM Part C



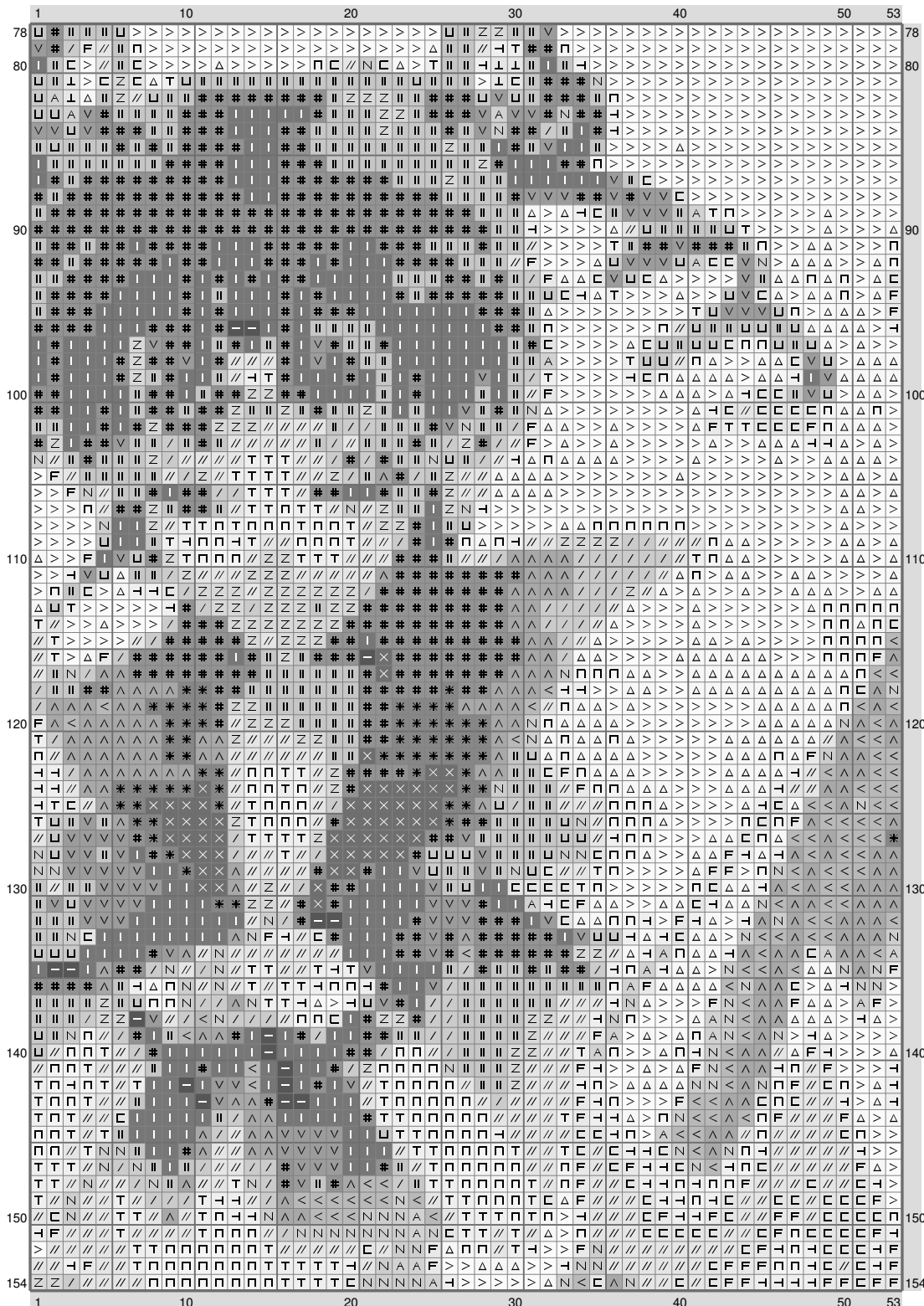
(This chart is printed using KG-Chart LE for Cross Stitch.)

ESM Part C



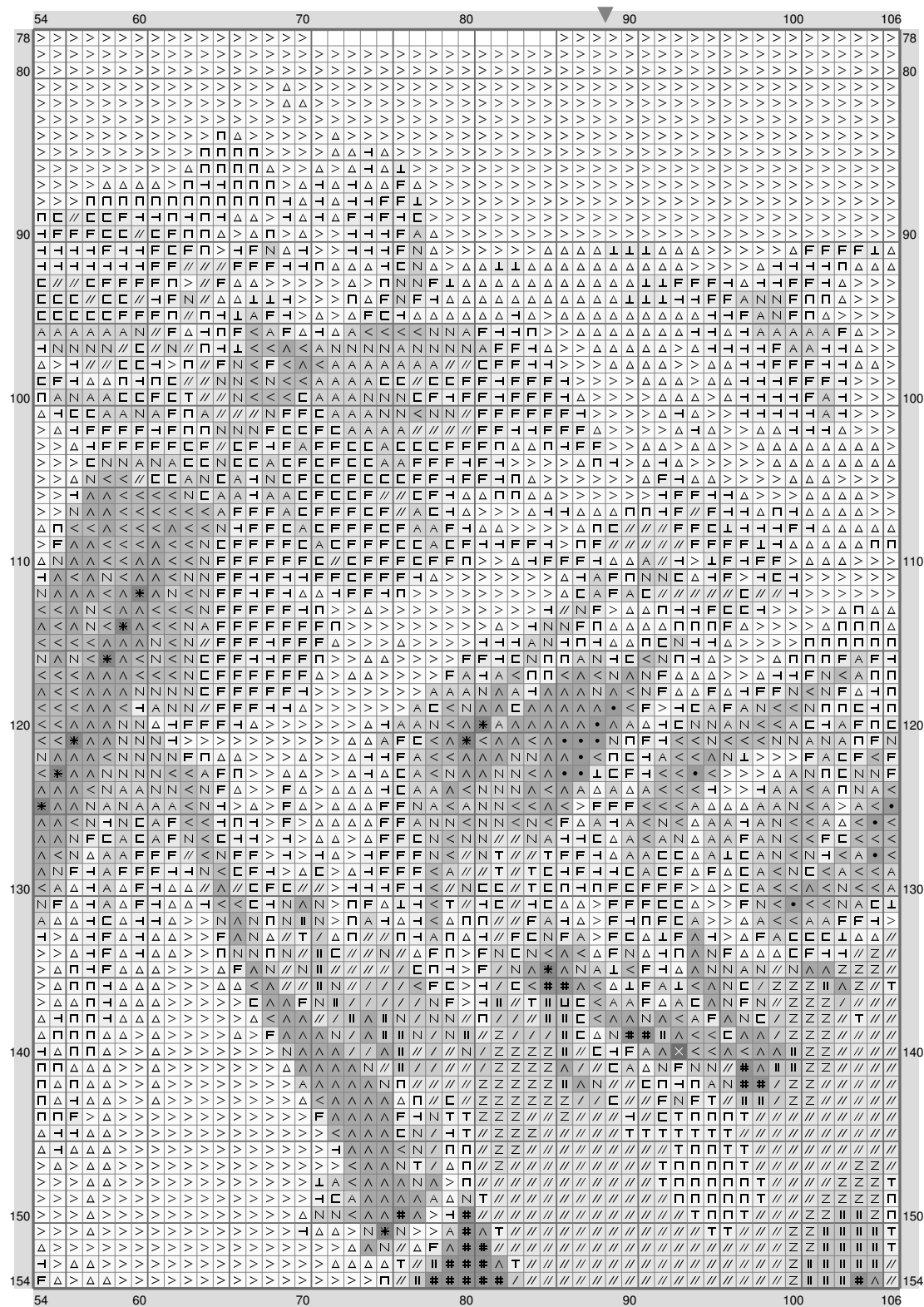
(This chart is printed using KG-Chart LE for Cross Stitch.)

ESM Part C



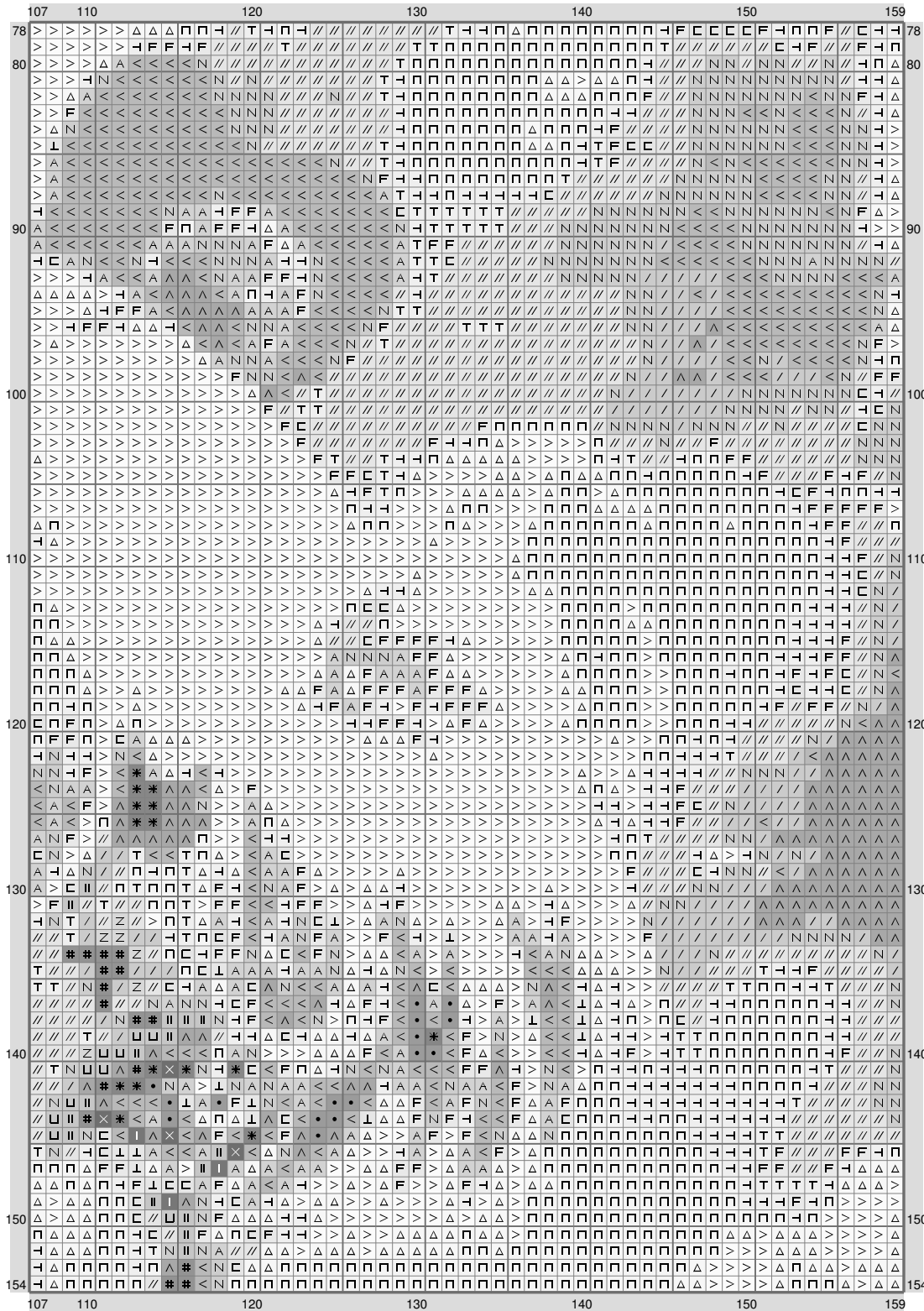
(This chart is printed using KG-Chart LE for Cross Stitch.

ESM Part C



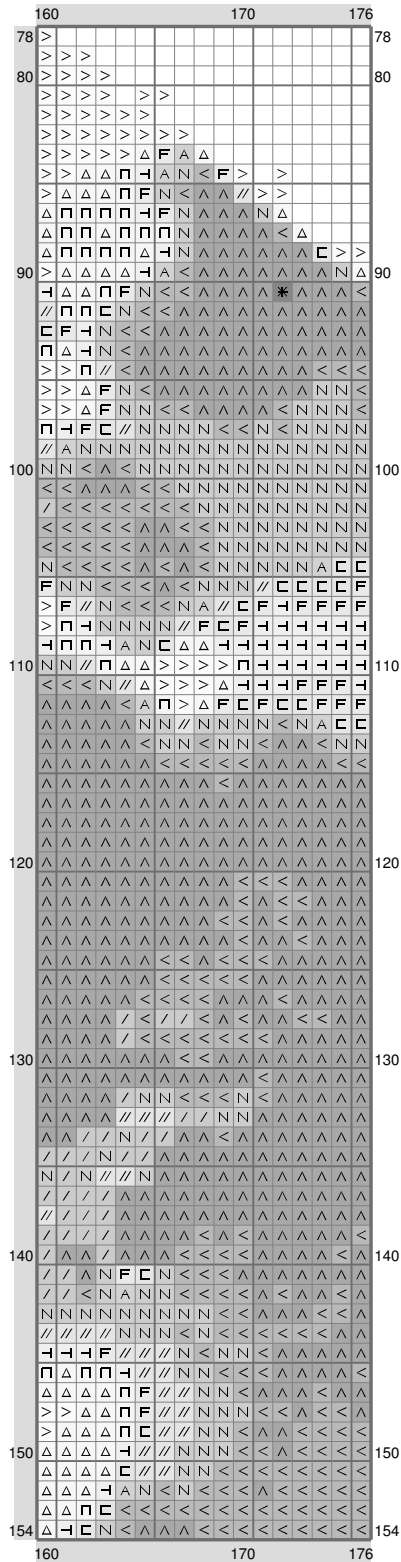
(This chart is printed using KG-Chart LE for Cross Stitch.)

ESM Part C



(This chart is printed using KG-Chart LE for Cross Stitch.)

ESM Part C



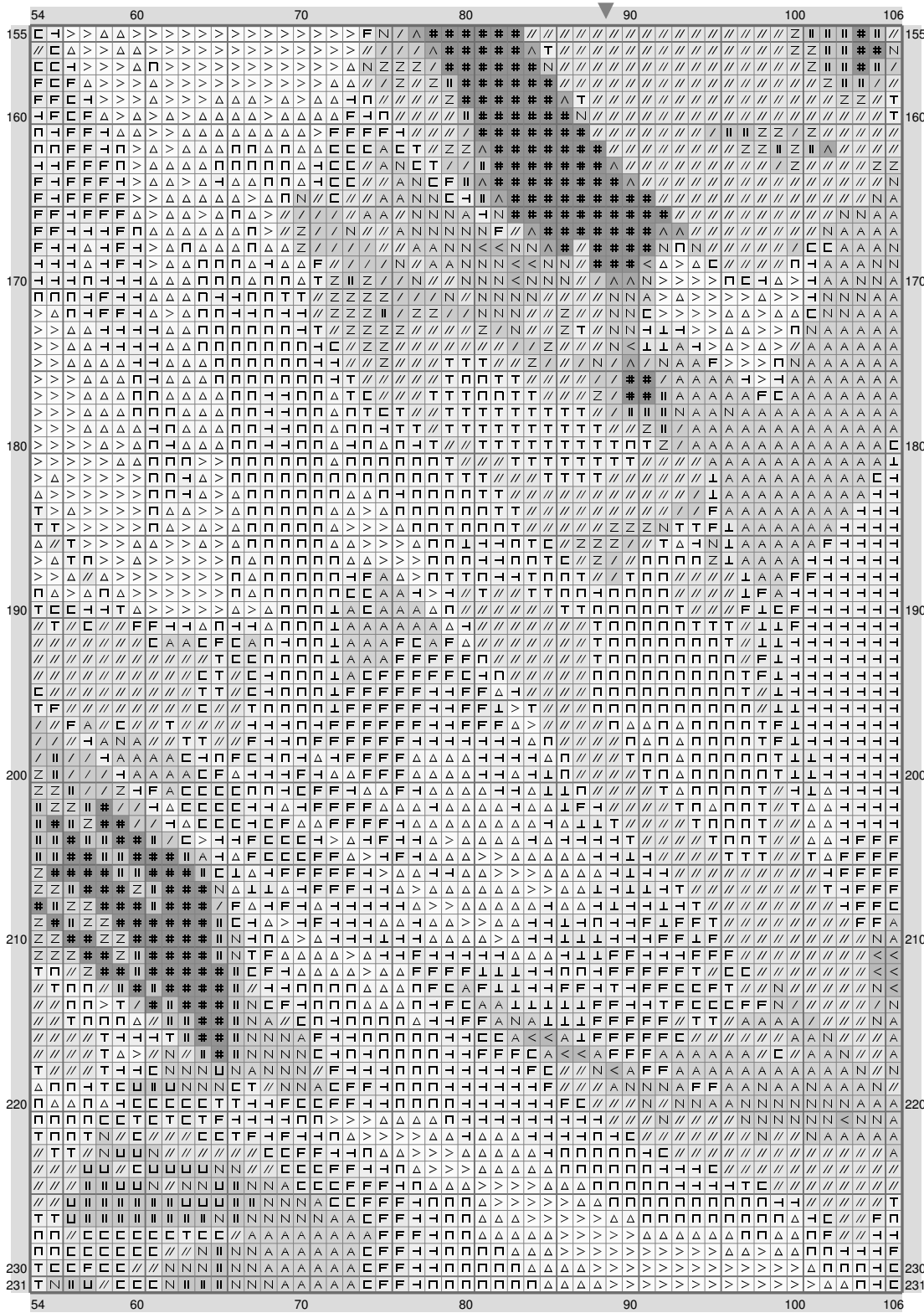
(This chart is printed using KG-Chart LE for Cross Stitch.)

ESM Part C

[illegible]

(This chart is printed using KG-Chart LE for Cross Stitch.)

ESM Part C



(This chart is printed using KG-Chart LE for Cross Stitch.)

ESM Part C

	107	110		120		130		140		150		159	
155	△	△	△	△	△	△	△	△	△	△	△	△	△
160	△	△	△	△	△	△	△	△	△	△	△	△	△
170	△	△	△	△	△	△	△	△	△	△	△	△	△
180	△	△	△	△	△	△	△	△	△	△	△	△	△
190	△	△	△	△	△	△	△	△	△	△	△	△	△
200	△	△	△	△	△	△	△	△	△	△	△	△	△
210	△	△	△	△	△	△	△	△	△	△	△	△	△
220	△	△	△	△	△	△	△	△	△	△	△	△	△
230	△	△	△	△	△	△	△	△	△	△	△	△	△
231	△	△	△	△	△	△	△	△	△	△	△	△	△

(This chart is printed using KG-Chart LE for Cross Stitch.)

ESM Part C

(This chart is printed using KG-Chart LE for Cross Stitch.

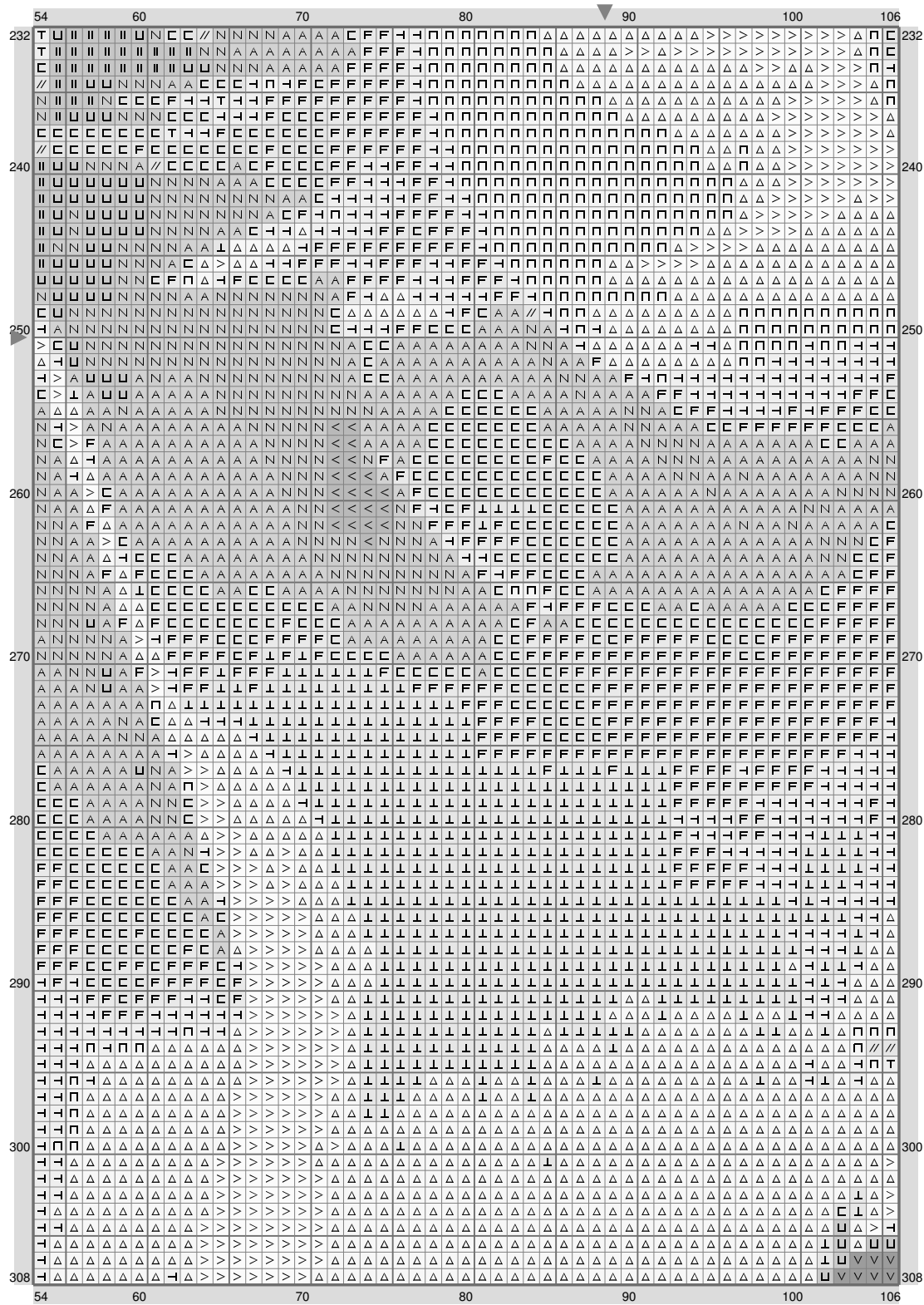
13 / 30

ESM Part C

[illegible]

(This chart is printed using KG-Chart LE for Cross Stitch.)

ESM Part C



(This chart is printed using KG-Chart LE for Cross Stitch.)

ESM Part C

[illegible]

(This chart is printed using KG-Chart LE for Cross Stitch.)

ESM Part C

[illegible]

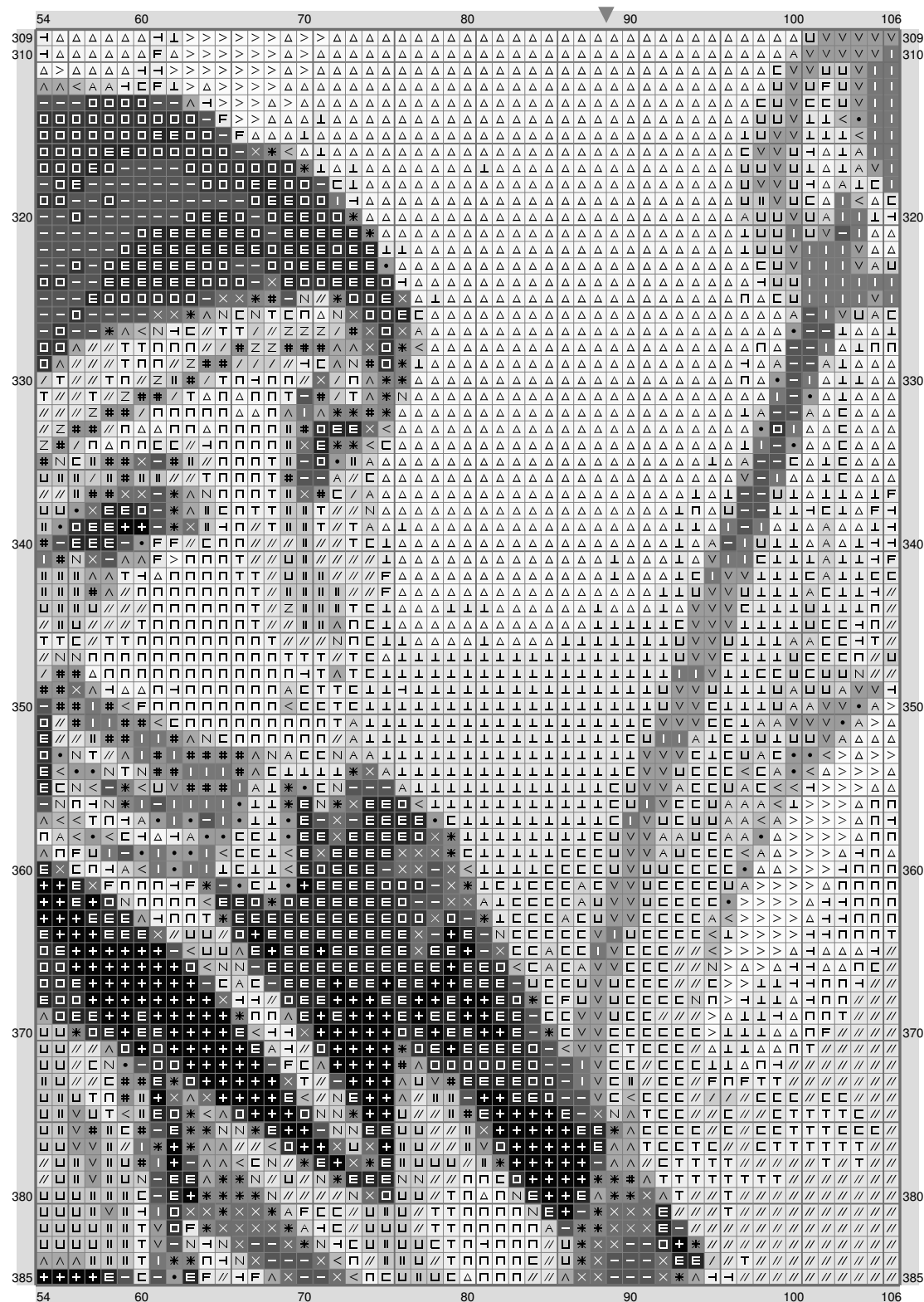
(This chart is printed using KG-Chart LE for Cross Stitch.)

ESM Part C

[illegible]

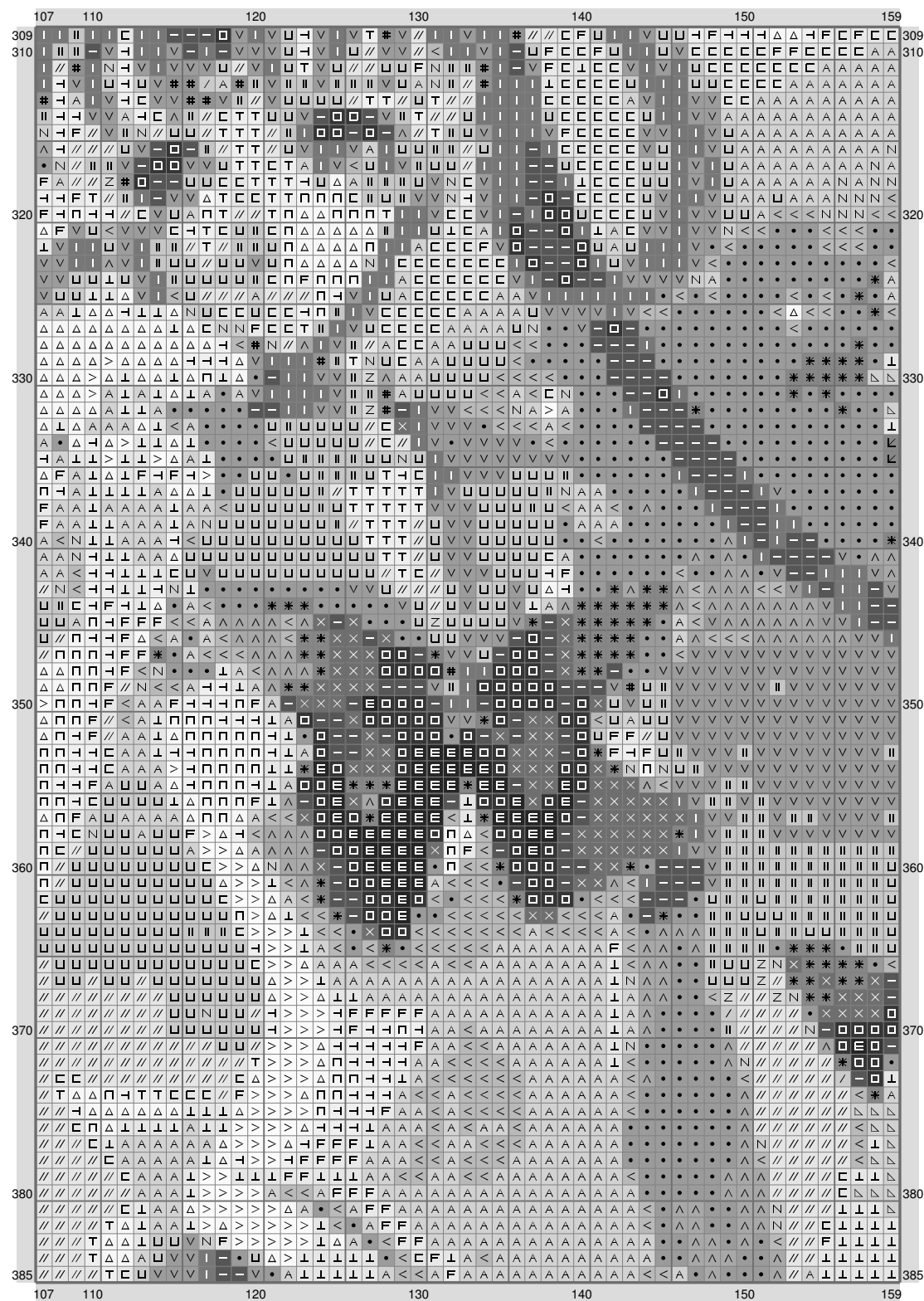
(This chart is printed using KG-Chart LE for Cross Stitch.)

ESM Part C



(This chart is printed using KG-Chart LE for Cross Stitch.)

ESM Part C



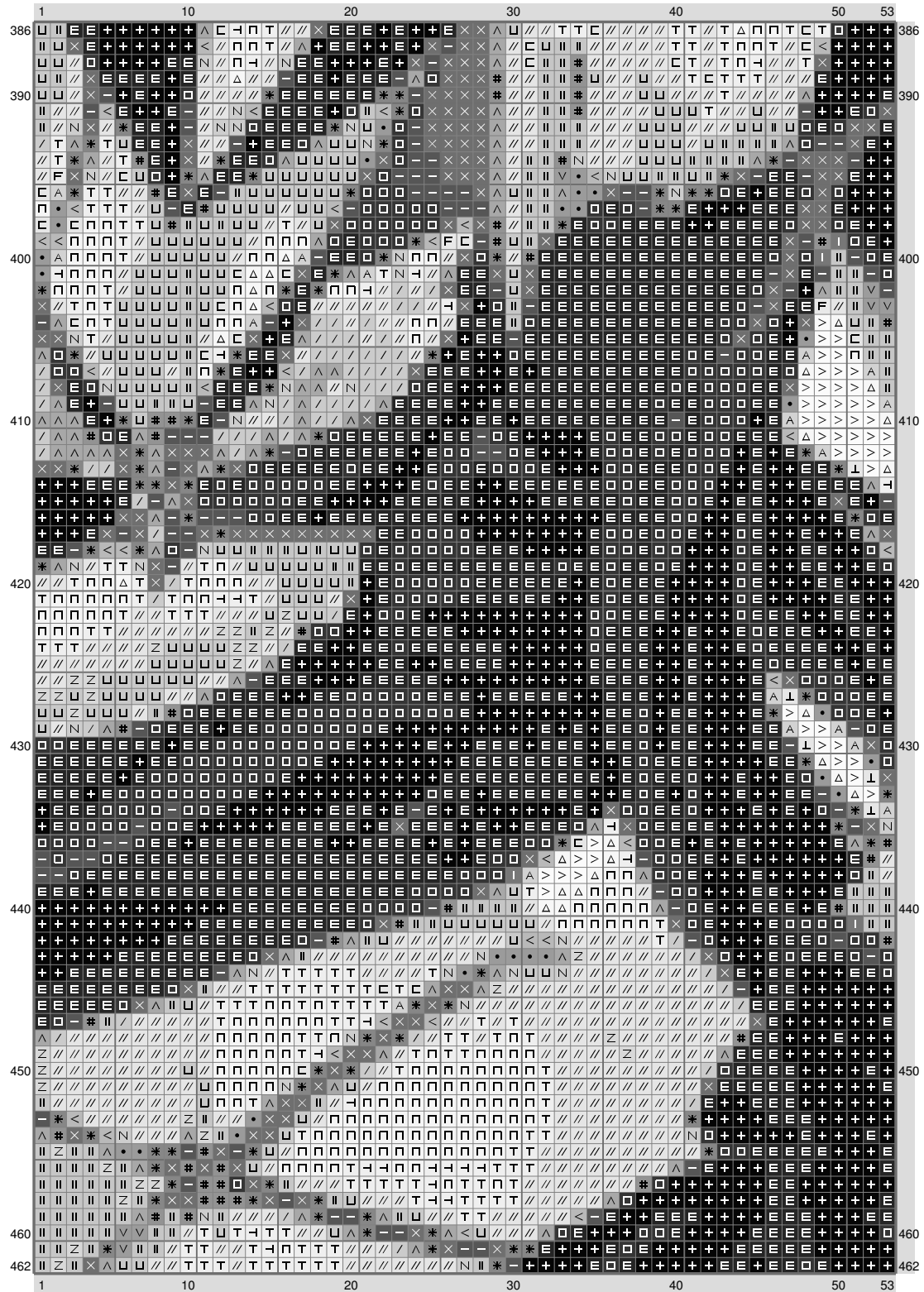
(This chart is printed using KG-Chart LE for Cross Stitch.)

ESM Part C

[illegible]

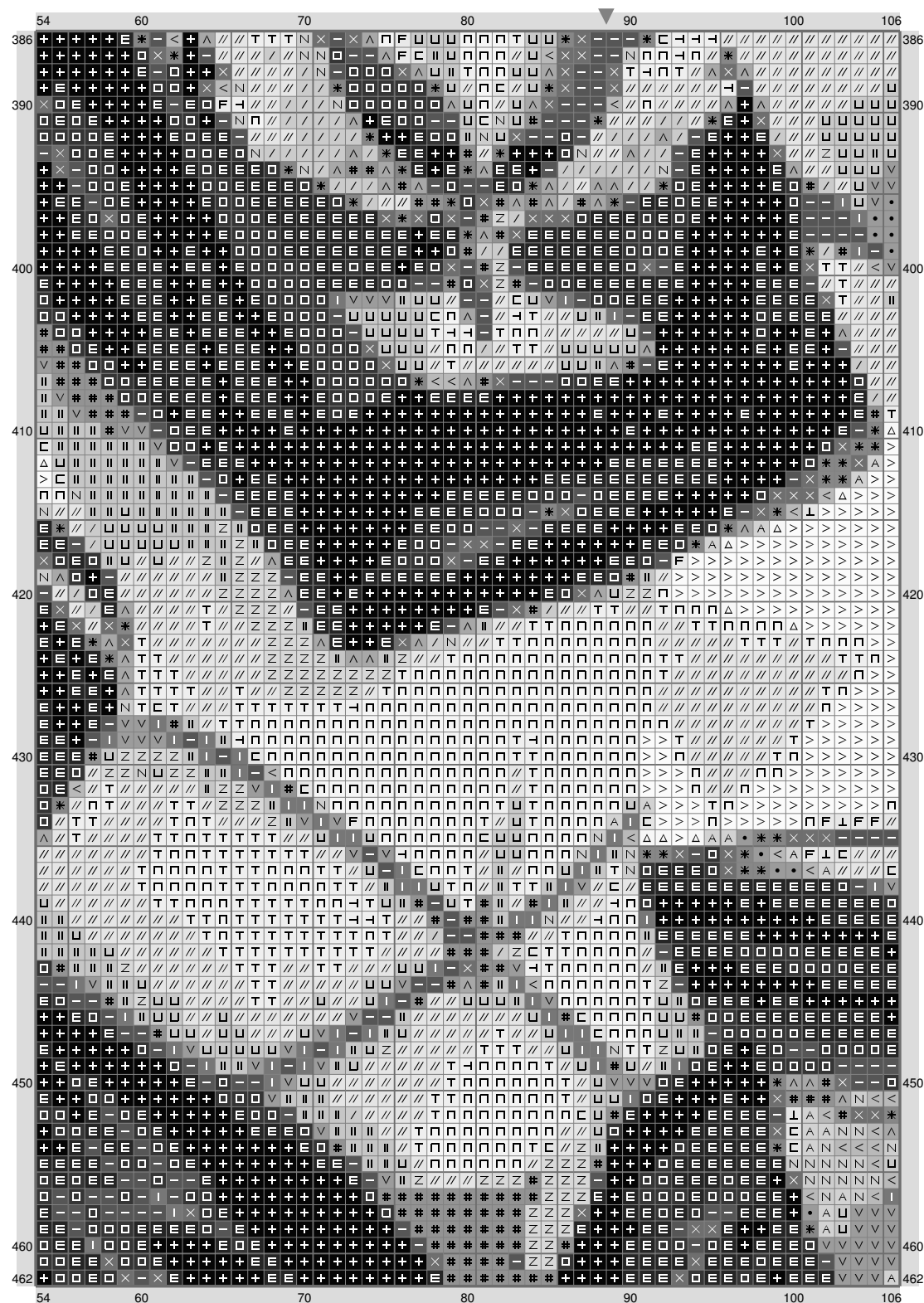
(This chart is printed using KG-Chart LE for Cross Stitch.)

ESM Part C



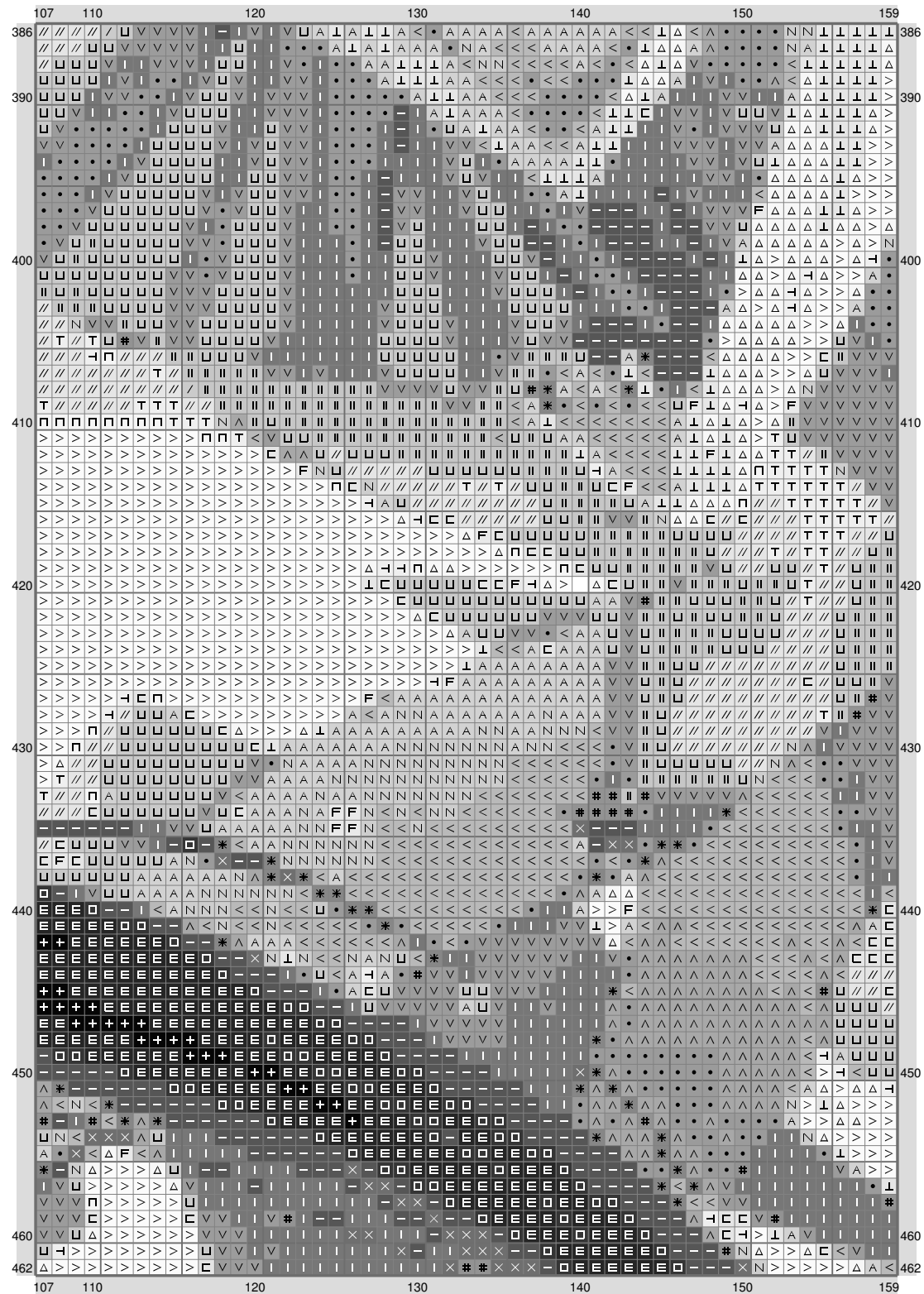
(This chart is printed using KG-Chart LE for Cross Stitch.)

ESM Part C



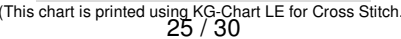
(This chart is printed using KG-Chart LE for Cross Stitch.)

ESM Part C

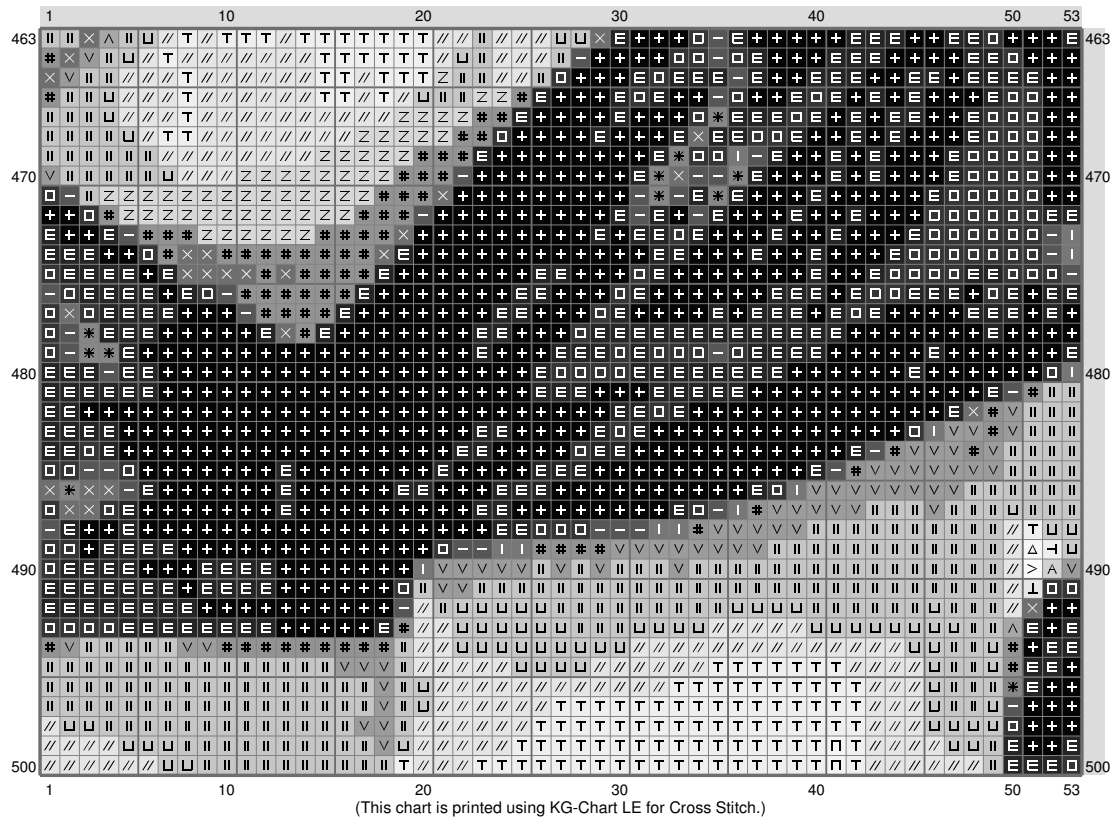


(This chart is printed using KG-Chart LE for Cross Stitch.)

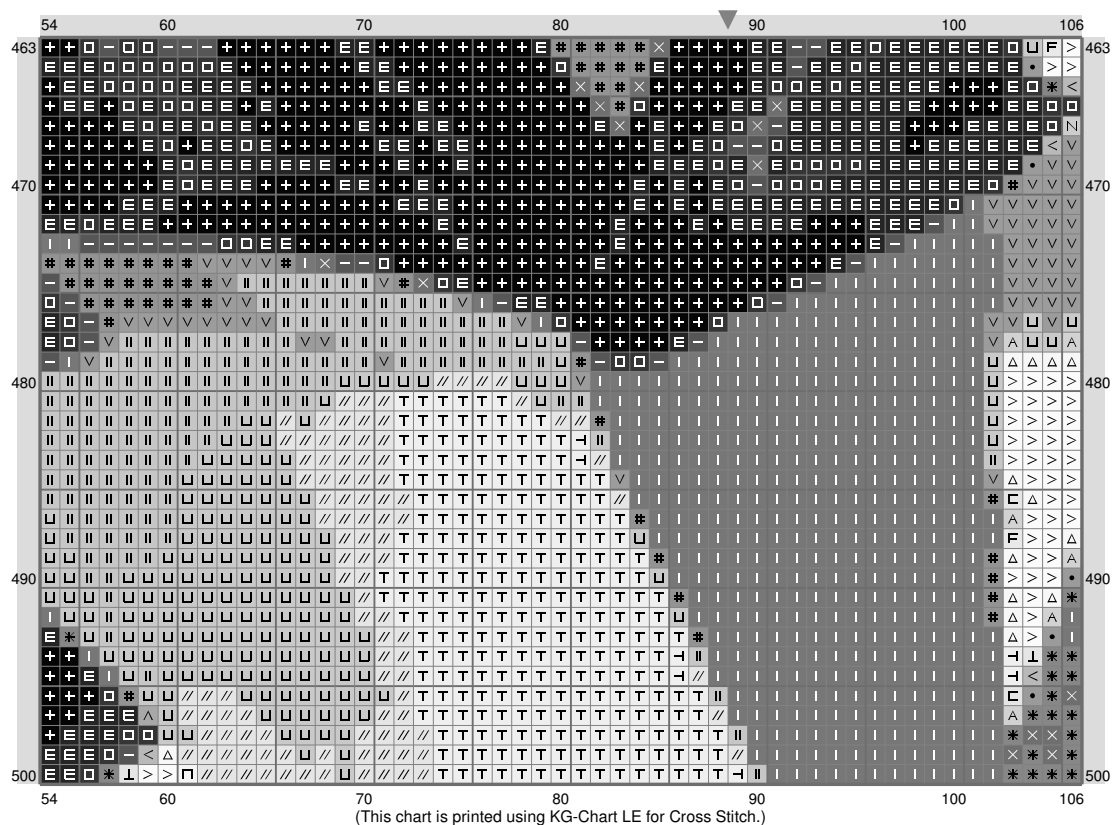
ESM Part C



ESM Part C



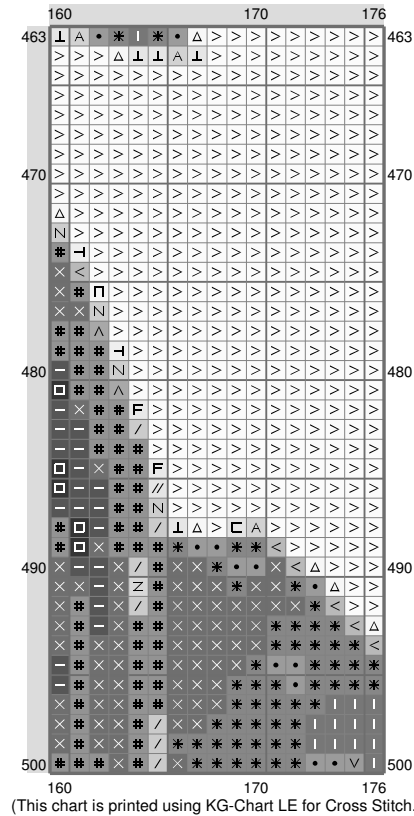
ESM Part C



ESM Part C



ESM Part C


































ESM Part C

Stitch Count: 176w x 500h
 Finished Size: 22.35 cm x 63.5 cm (20 ct./inch)
 Cloth: Aida
 Cloth's Color: White
 # of colors: 31 Colors

Color Table (DMC)

Cross Stitch

	ECRU	(3338 ct)
	BLANC	(8497 ct)
	224	(2254 ct)
	310	(3201 ct)
	437	(2250 ct)
	453	(3383 ct)
	502	(167 ct)
	543	(3017 ct)
	613	(2446 ct)
	640	(997 ct)
	647	(2615 ct)
	745	(6537 ct)
	762	(1595 ct)
	801	(1193 ct)
	822	(2736 ct)
	939	(3239 ct)
	955	(217 ct)
	961	(1818 ct)
	3032	(2468 ct)
	3042	(1102 ct)
	3046	(767 ct)
	3051	(1450 ct)
	3371	(1532 ct)
	3721	(1898 ct)
	3770	(3192 ct)
	3799	(43 ct)
	3855	(1168 ct)
	3862	(1335 ct)
	3865	(5312 ct)
	3866	(5483 ct)
	3841	(46 ct)