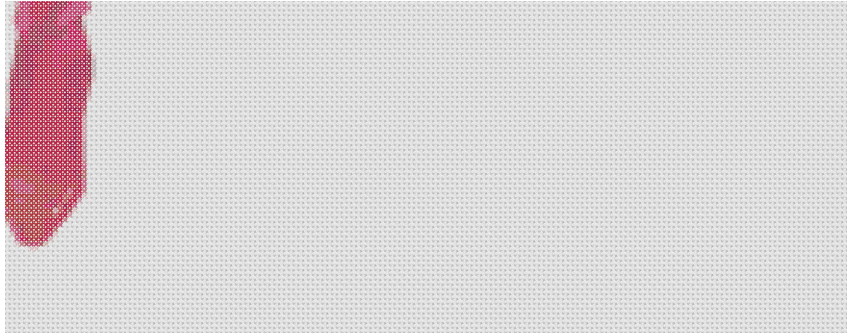
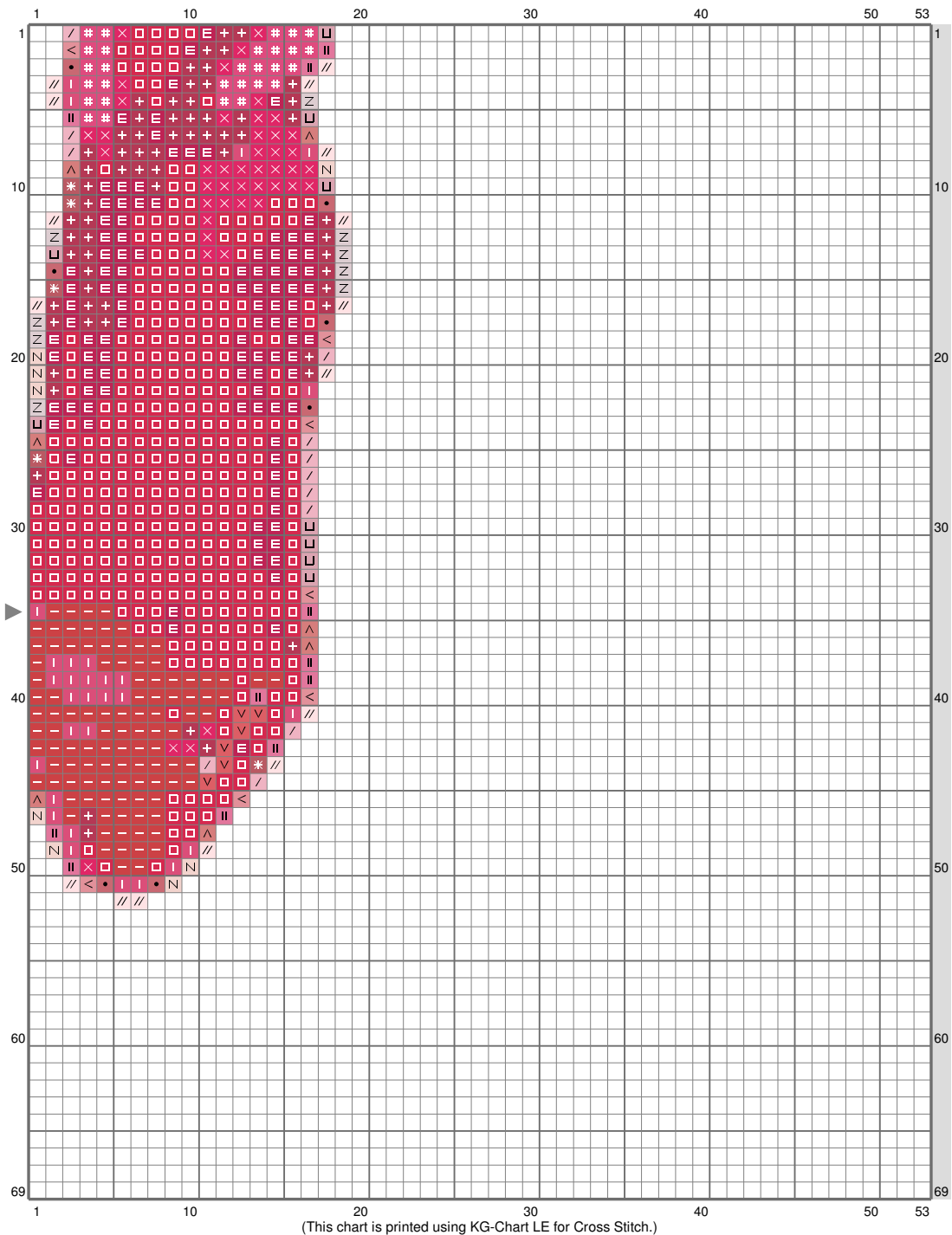


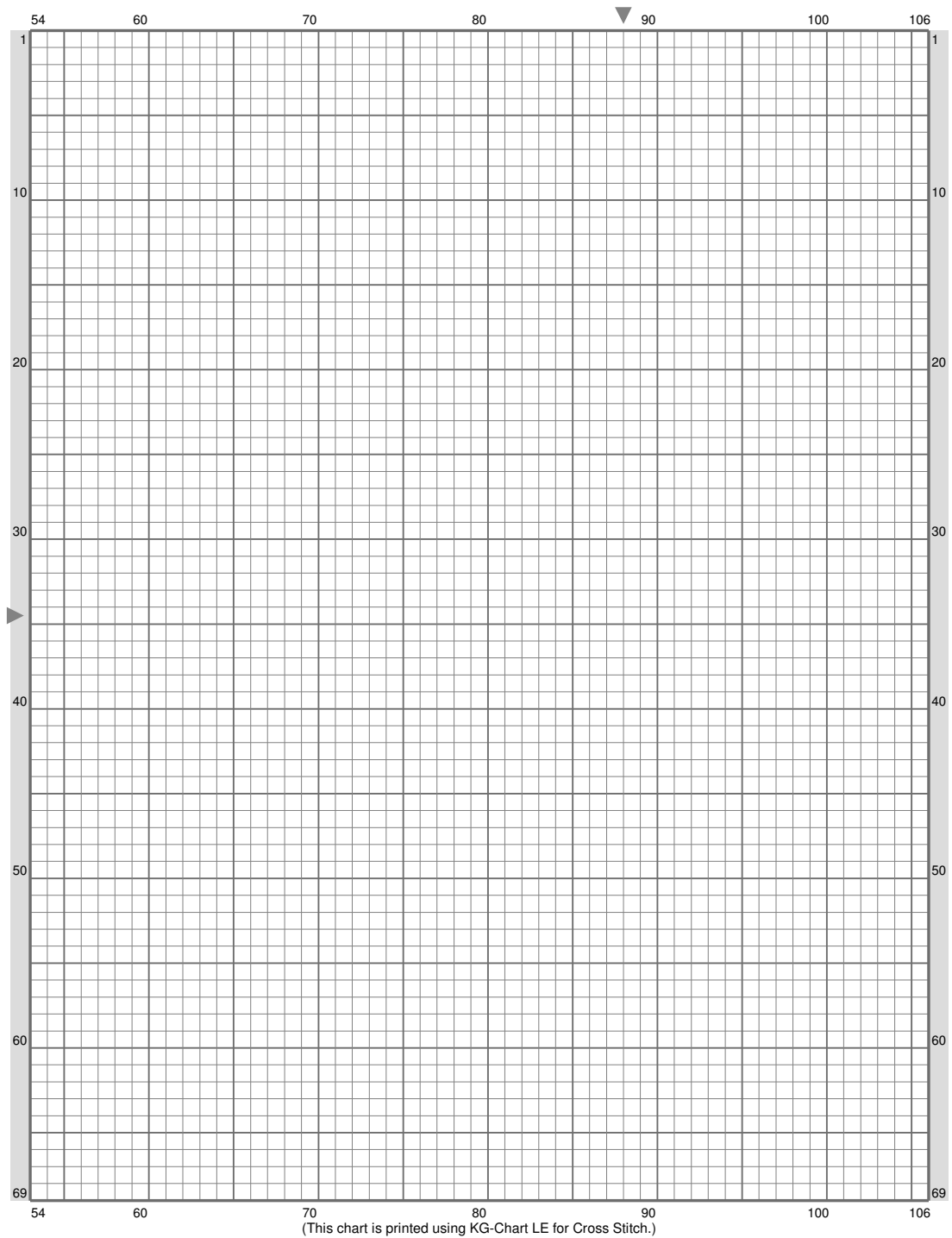
ESM Part S



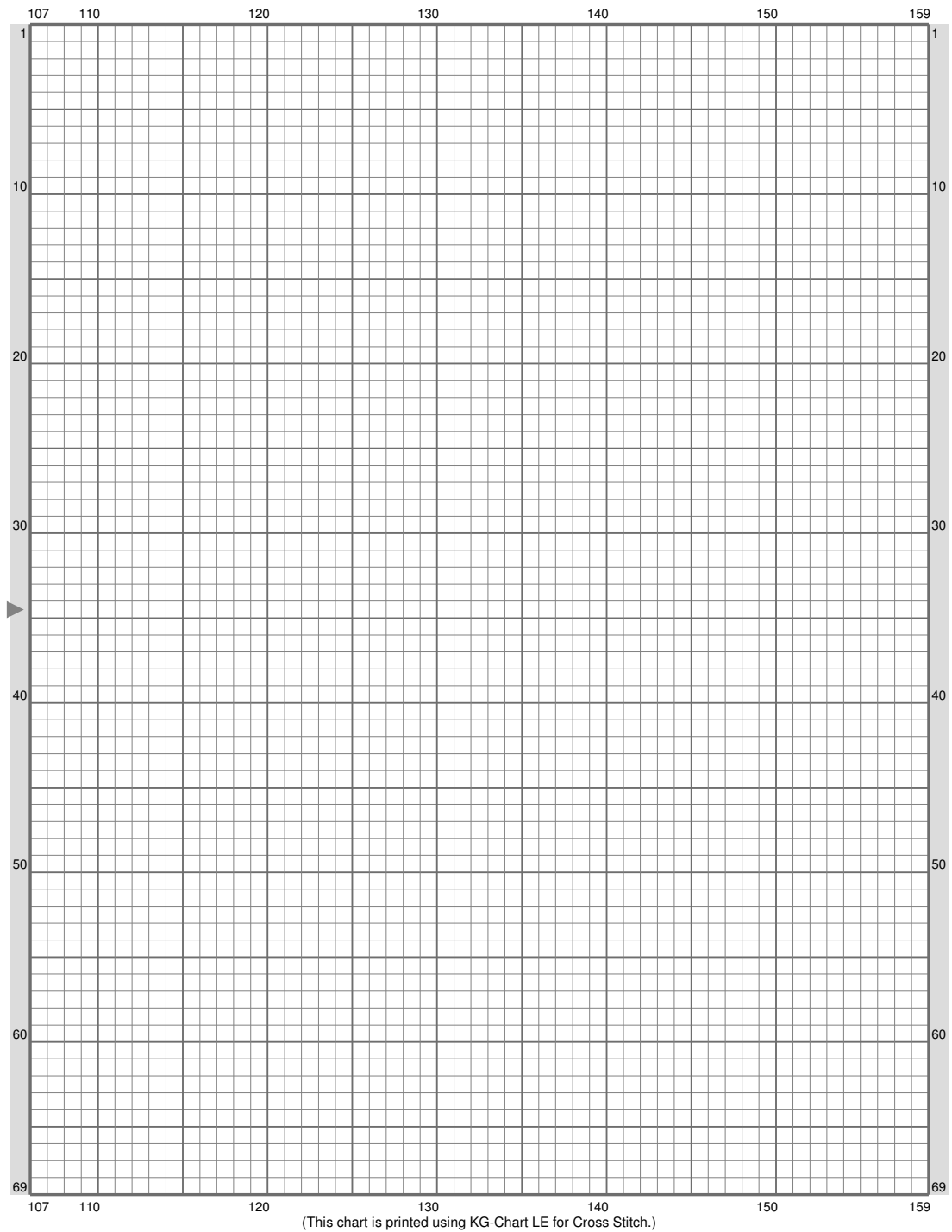
ESM Part S



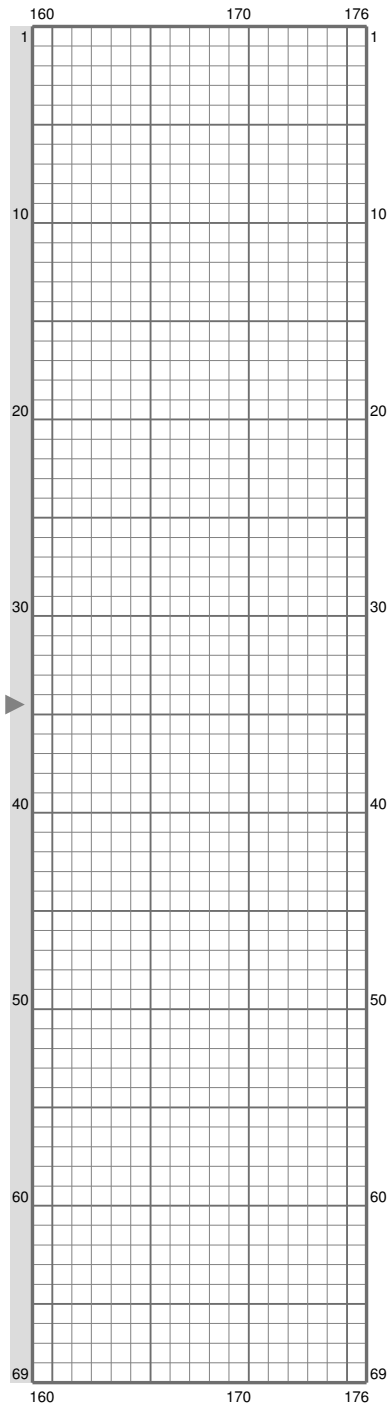
ESM Part S



ESM Part S



ESM Part S



Stitch Count: 176w x 69h
 Finished Size: 22.35 cm x 8.76 cm (20 ct./inch)
 Cloth: Aida
 Cloth's Color: White
 # of colors: 18 Colors

Color Table (DMC)

Cross Stitch

+	150	(68 ct)
≡	777	(106 ct)
□	3831	(337 ct)
—	347	(105 ct)
×	601	(45 ct)
*	3721	(5 ct)
!	3350	(30 ct)
#	602	(29 ct)
•	3722	(7 ct)
∨	3830	(6 ct)
^	356	(7 ct)
	3687	(11 ct)
<	3859	(7 ct)
U	778	(9 ct)
/	761	(12 ct)
z	453	(9 ct)
N	842	(8 ct)
//	819	(16 ct)

(This chart is printed using KG-Chart LE for Cross Stitch.)