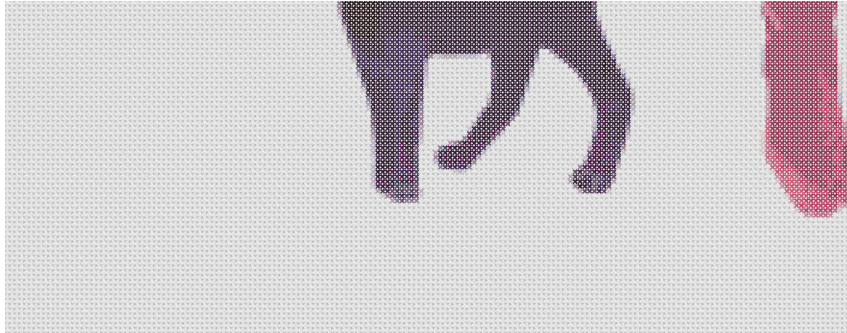
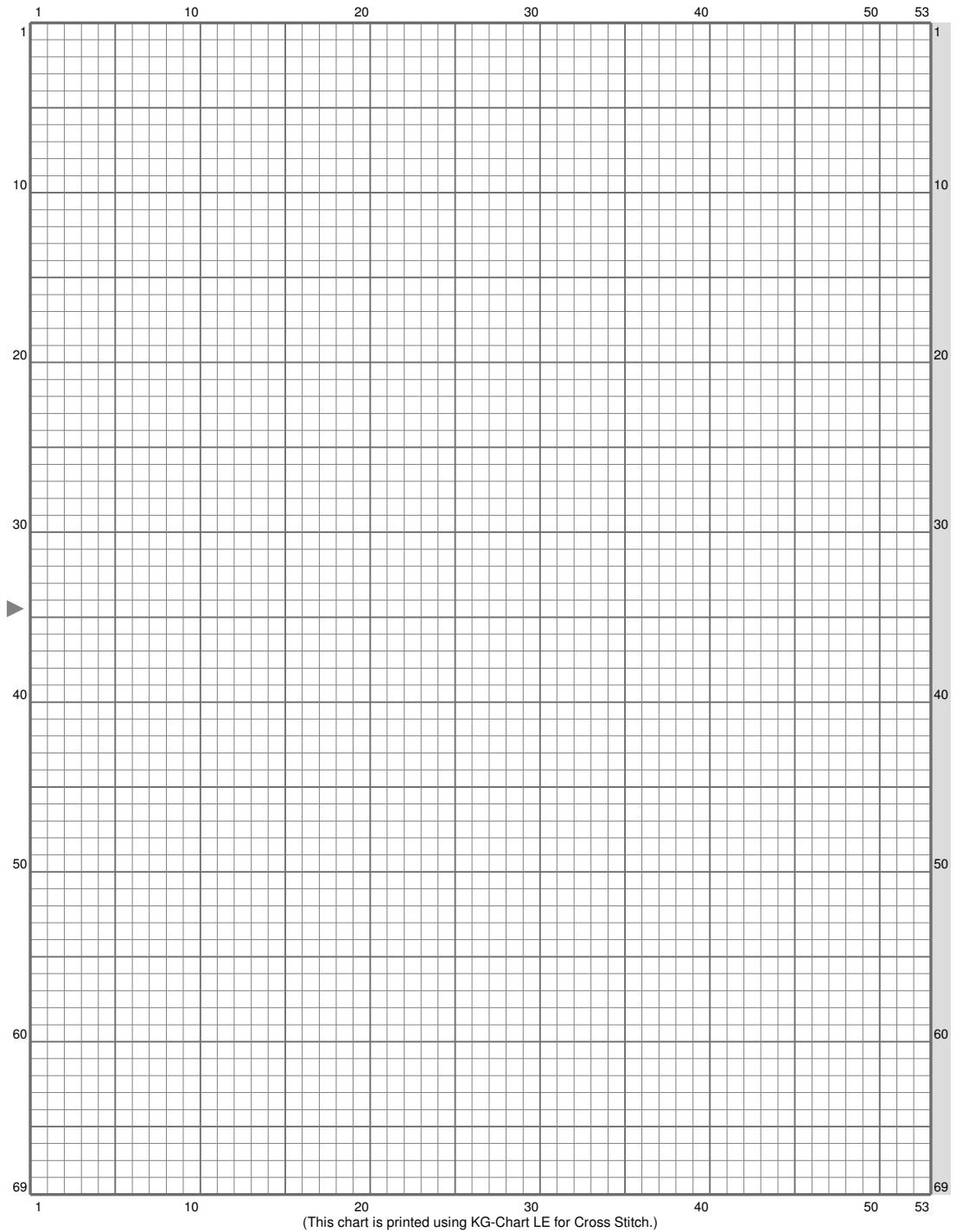


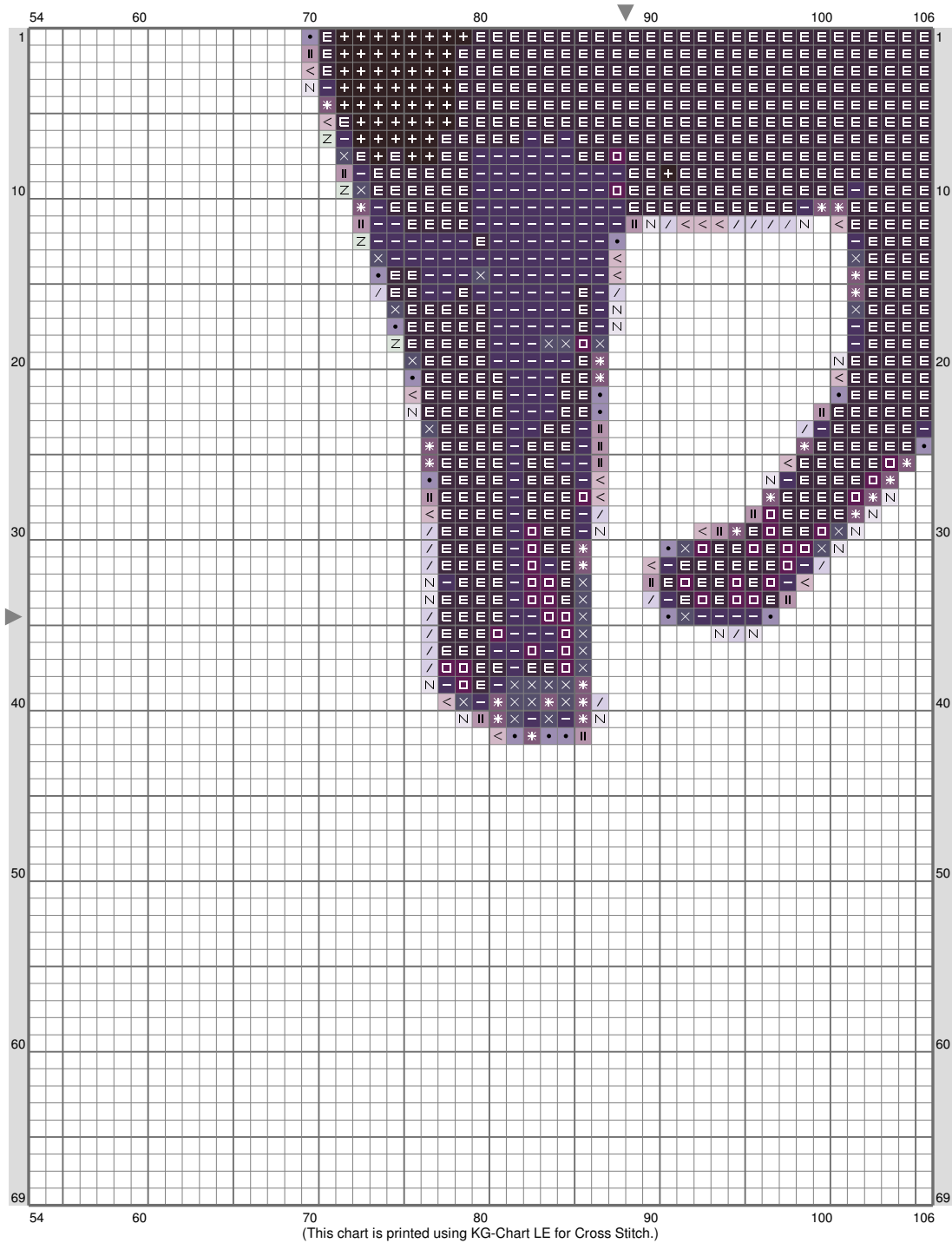
ESM Part R



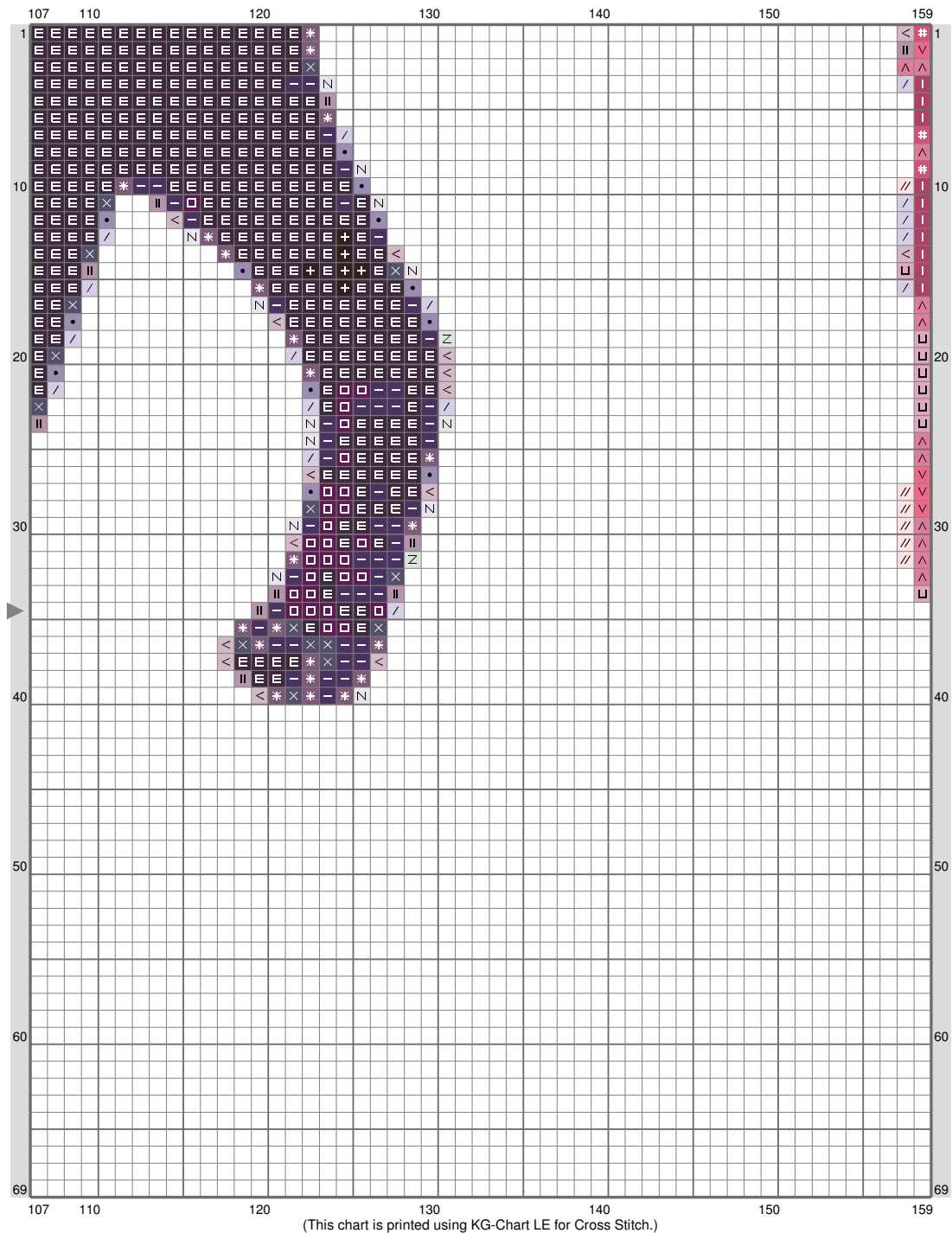
ESM Part R



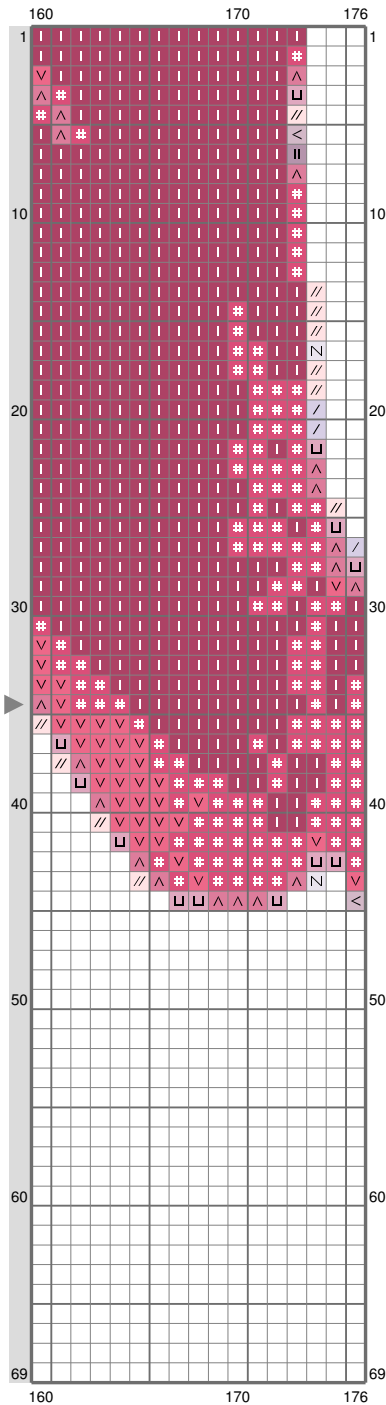
ESM Part R



ESM Part R



ESM Part R



Stitch Count: 176w x 69h

Finished Size: 22.35 cm x 8.76 cm (20 ct./inch)

Cloth: Aida

Cloth's Color: White

of colors: 18 Colors

Color Table (DMC)

Cross Stitch

	939	(57 ct)
	823	(850 ct)
	550	(66 ct)
	336	(224 ct)
	413	(48 ct)
	3041	(48 ct)
	3803	(460 ct)
	3350	(134 ct)
	414	(28 ct)
	335	(40 ct)
	961	(30 ct)
	451	(26 ct)
	452	(36 ct)
	3727	(20 ct)
	168	(39 ct)
	3072	(6 ct)
	762	(35 ct)
	819	(17 ct)

(This chart is printed using KG-Chart LE for Cross Stitch.)