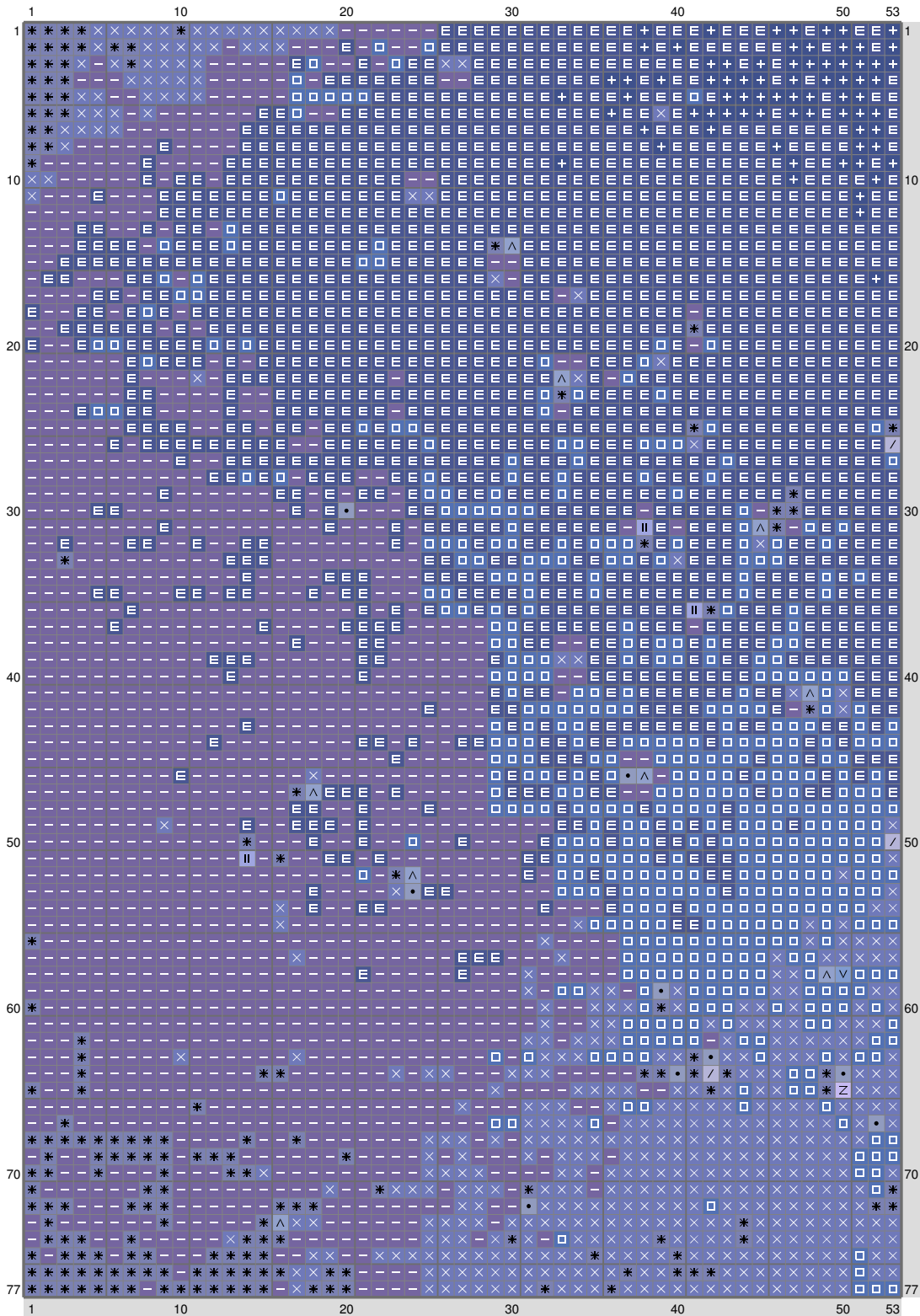


## ESM Part P

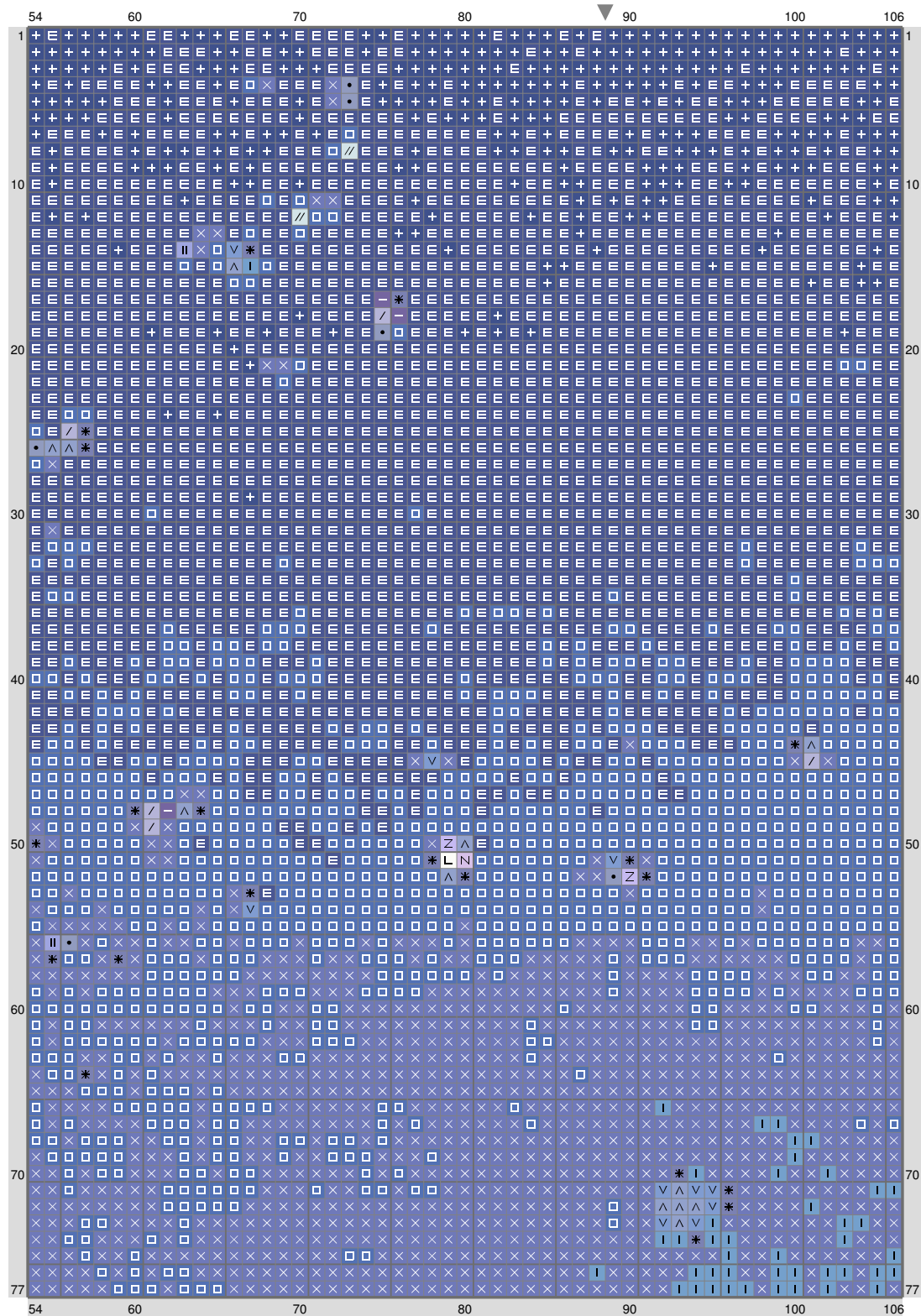


# ESM Part P

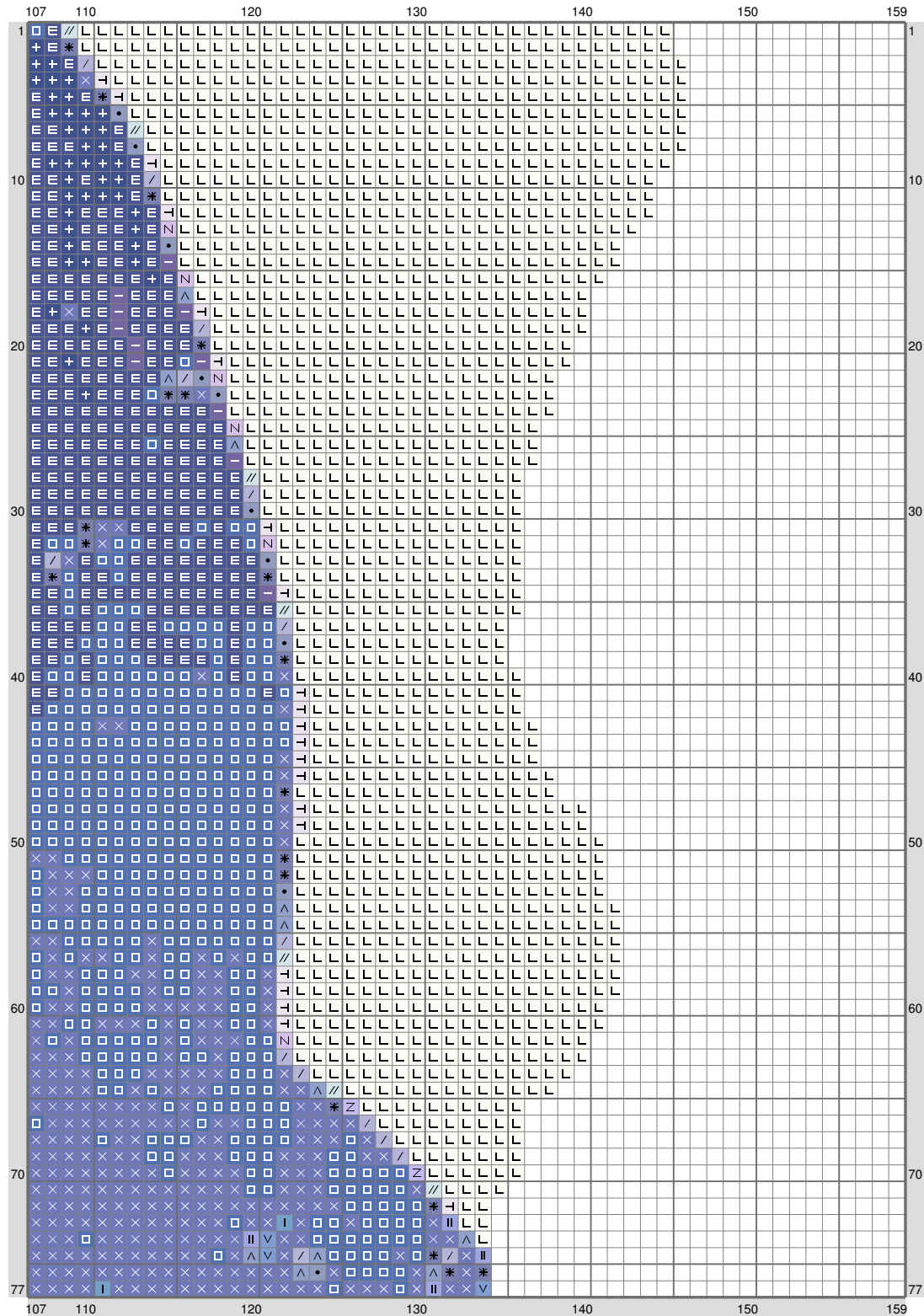


(This chart is printed using KG-Chart LE for Cross Stitch.)

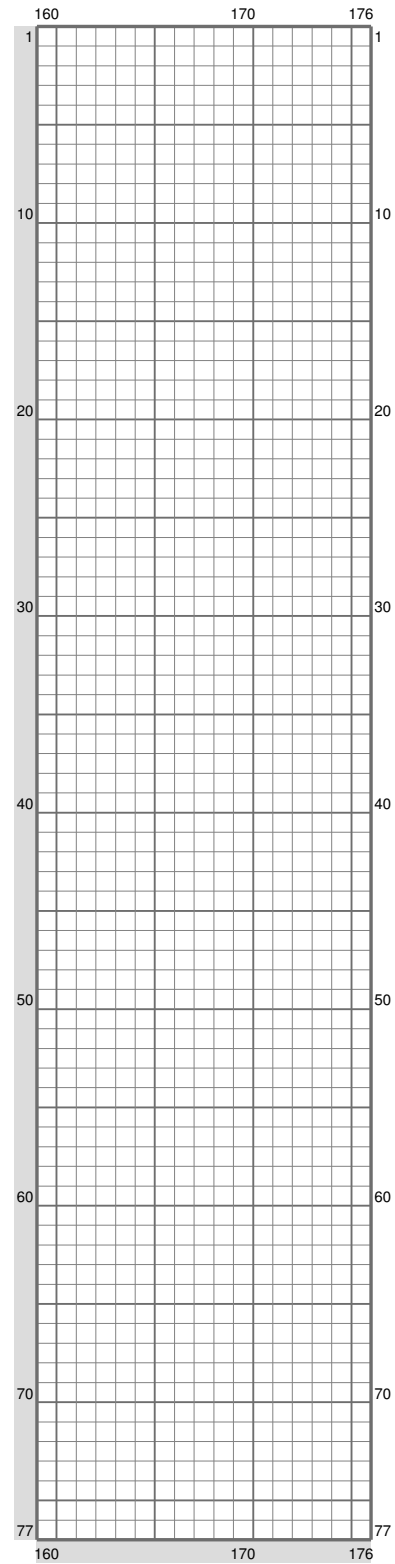
# ESM Part P



# ESM Part P

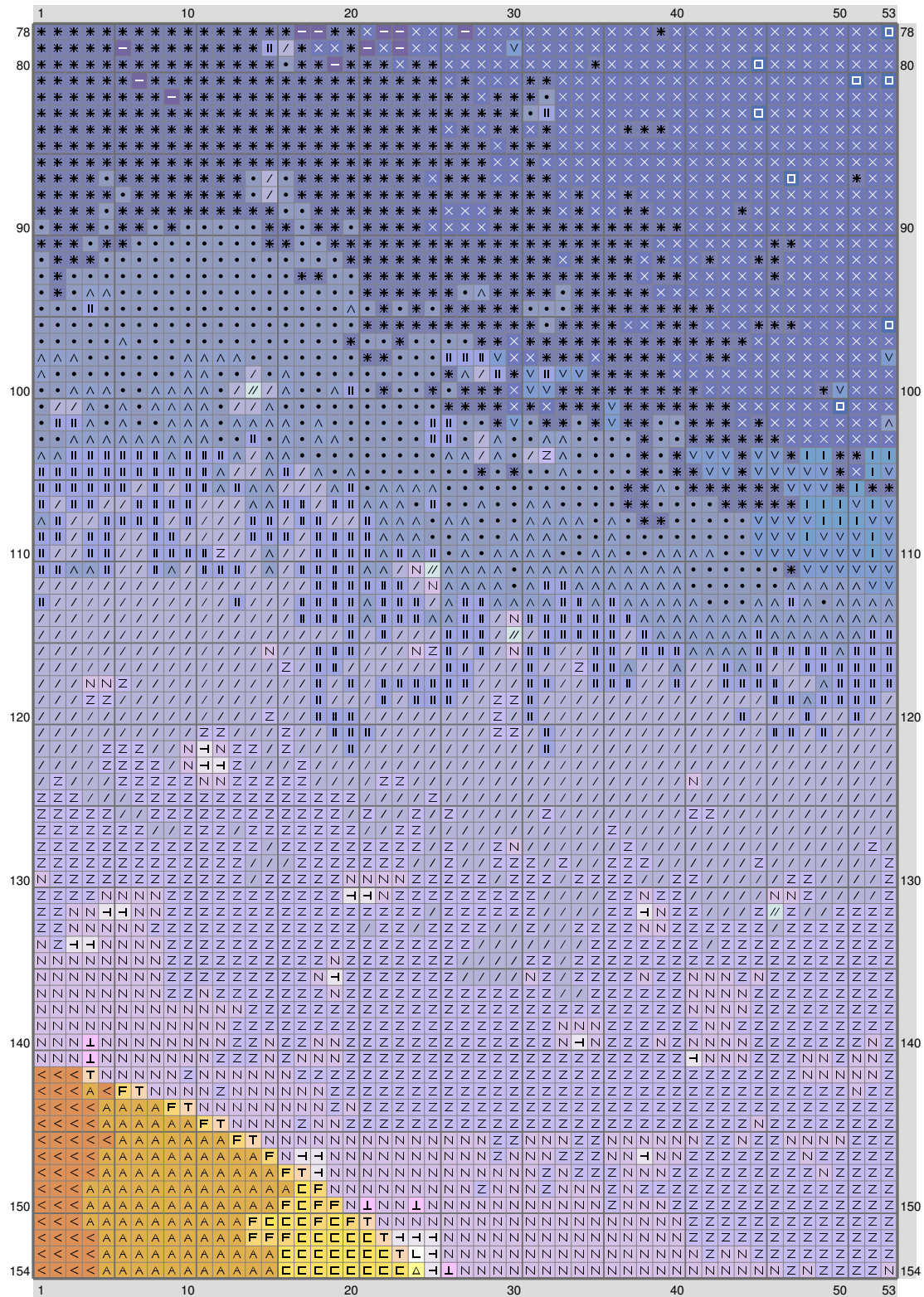


# ESM Part P



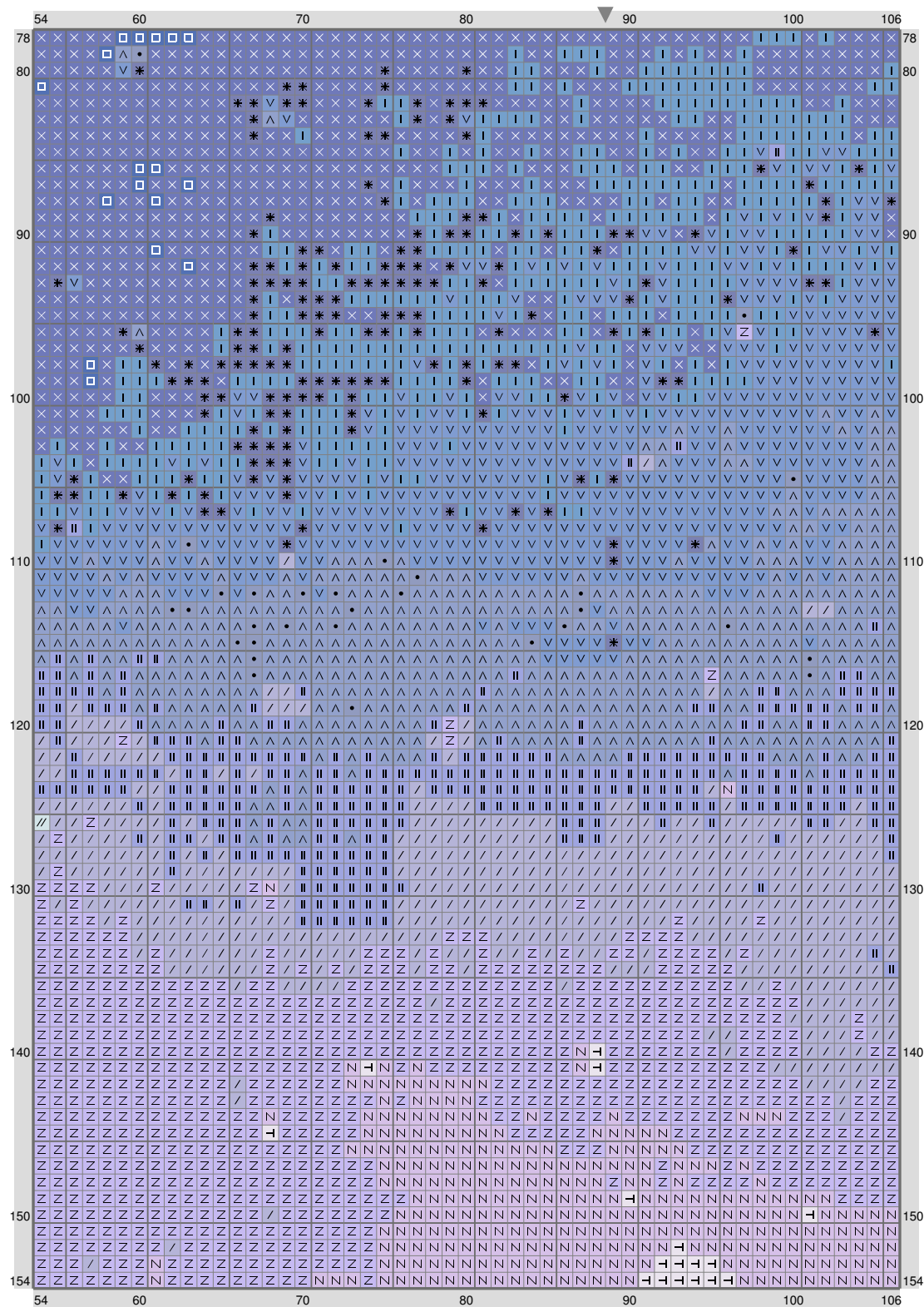
(This chart is printed using KG-Chart LE for Cross Stitch.)

## ESM Part P



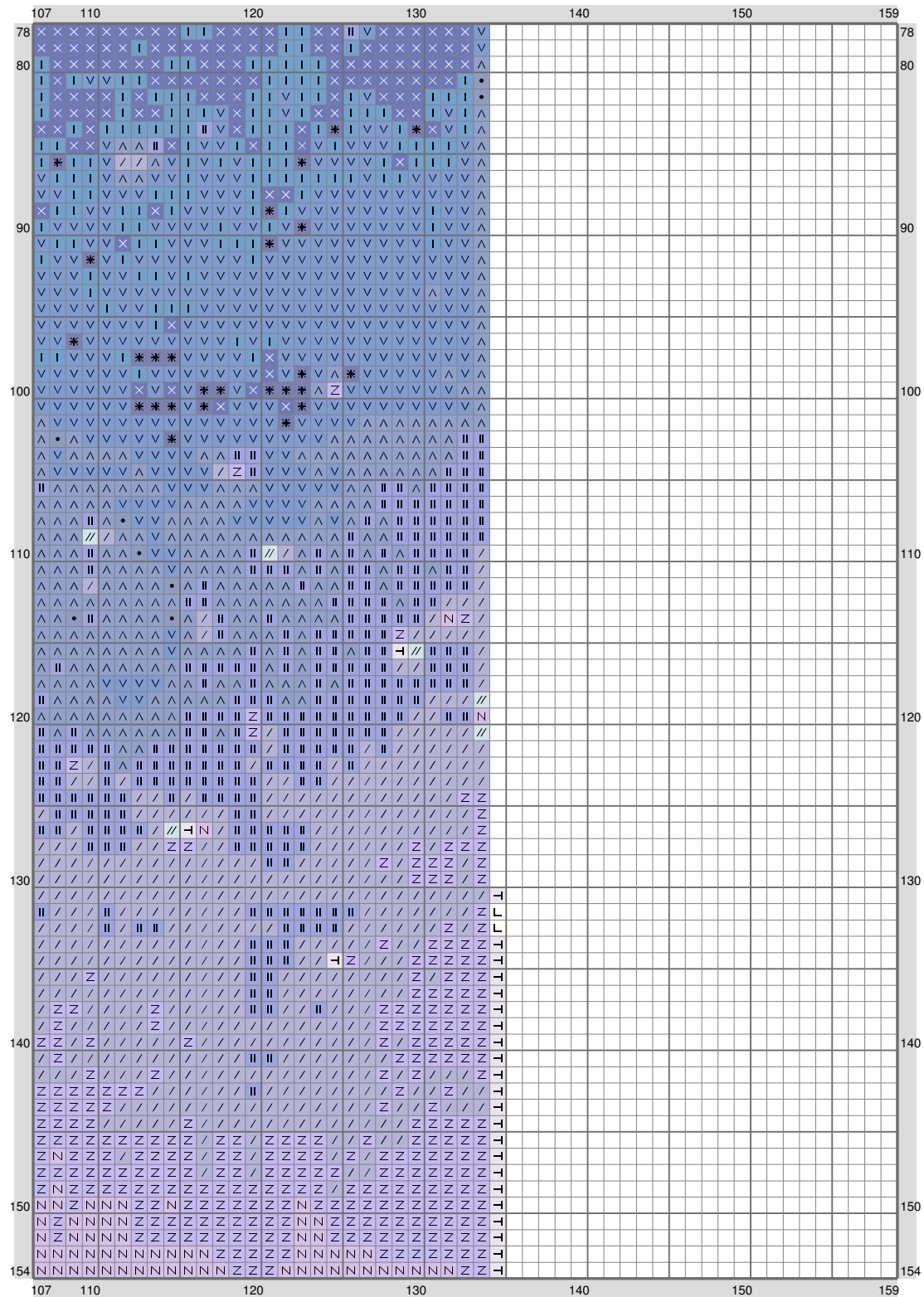
(This chart is printed using KG-Chart LE for Cross Stitch.)

# ESM Part P



(This chart is printed using KG-Chart LE for Cross Stitch.)

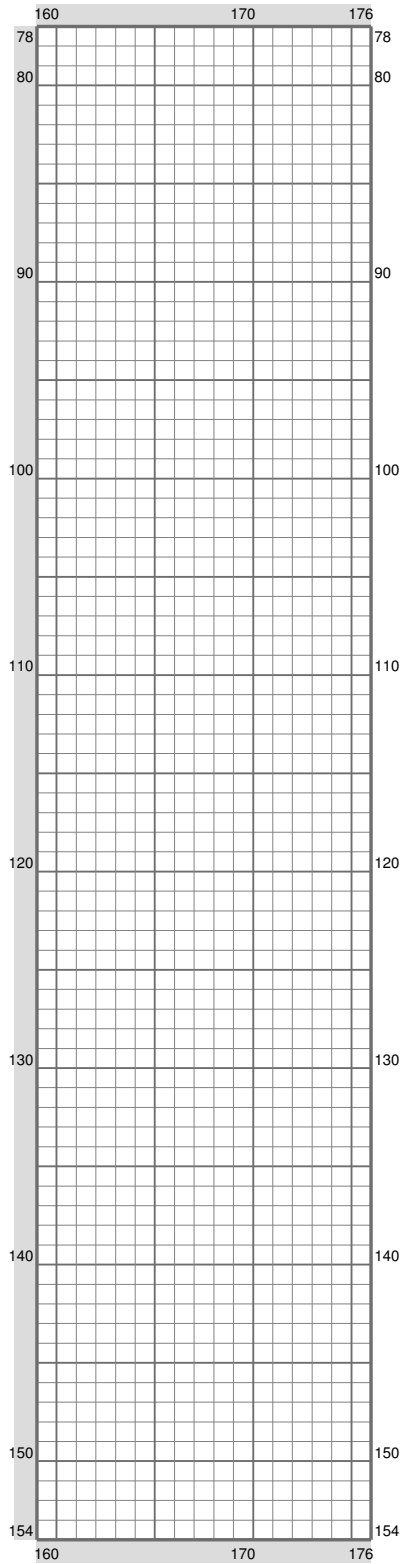
# ESM Part P



(This chart is printed using KG-Chart LE for Cross Stitch.)

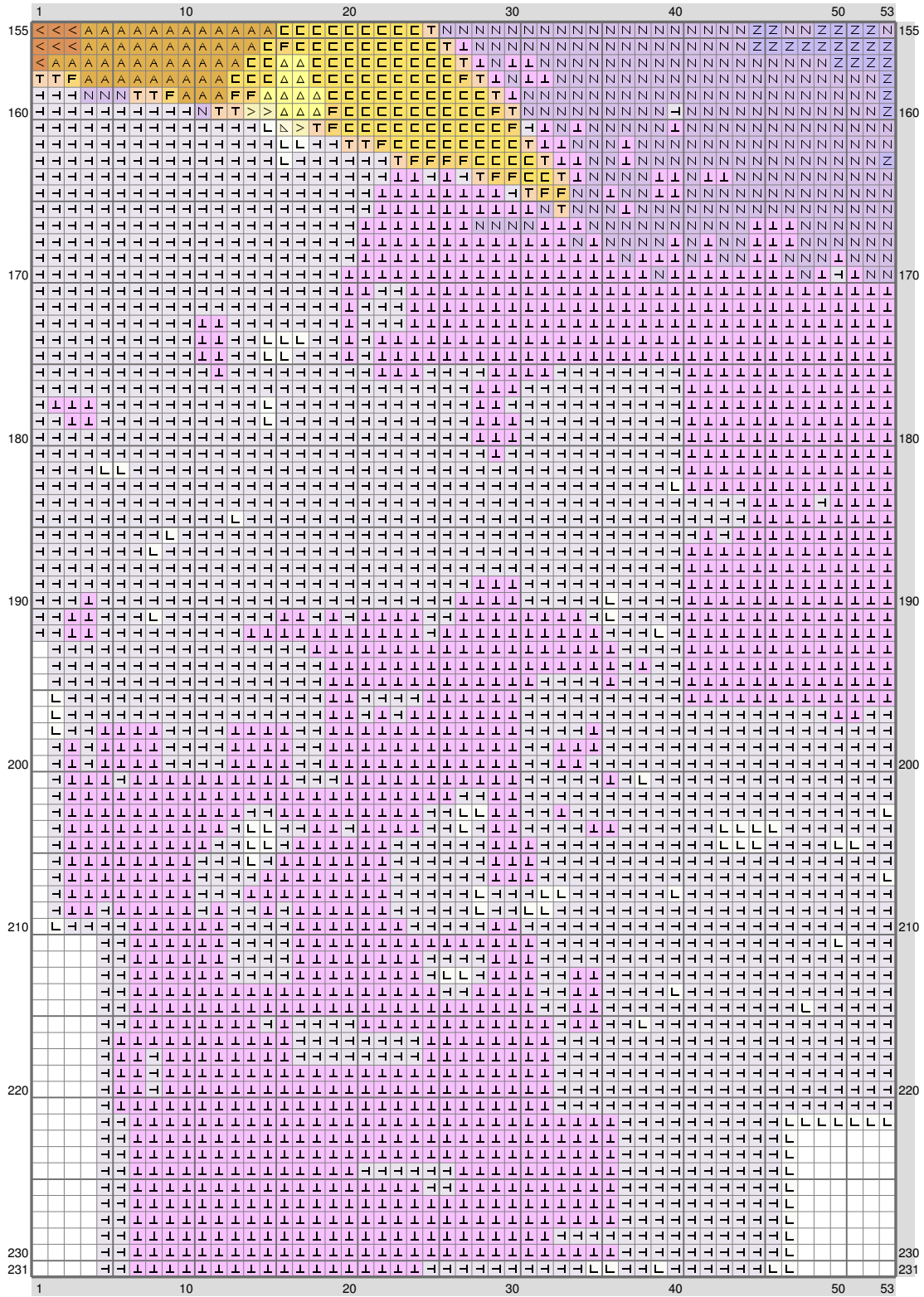


# ESM Part P



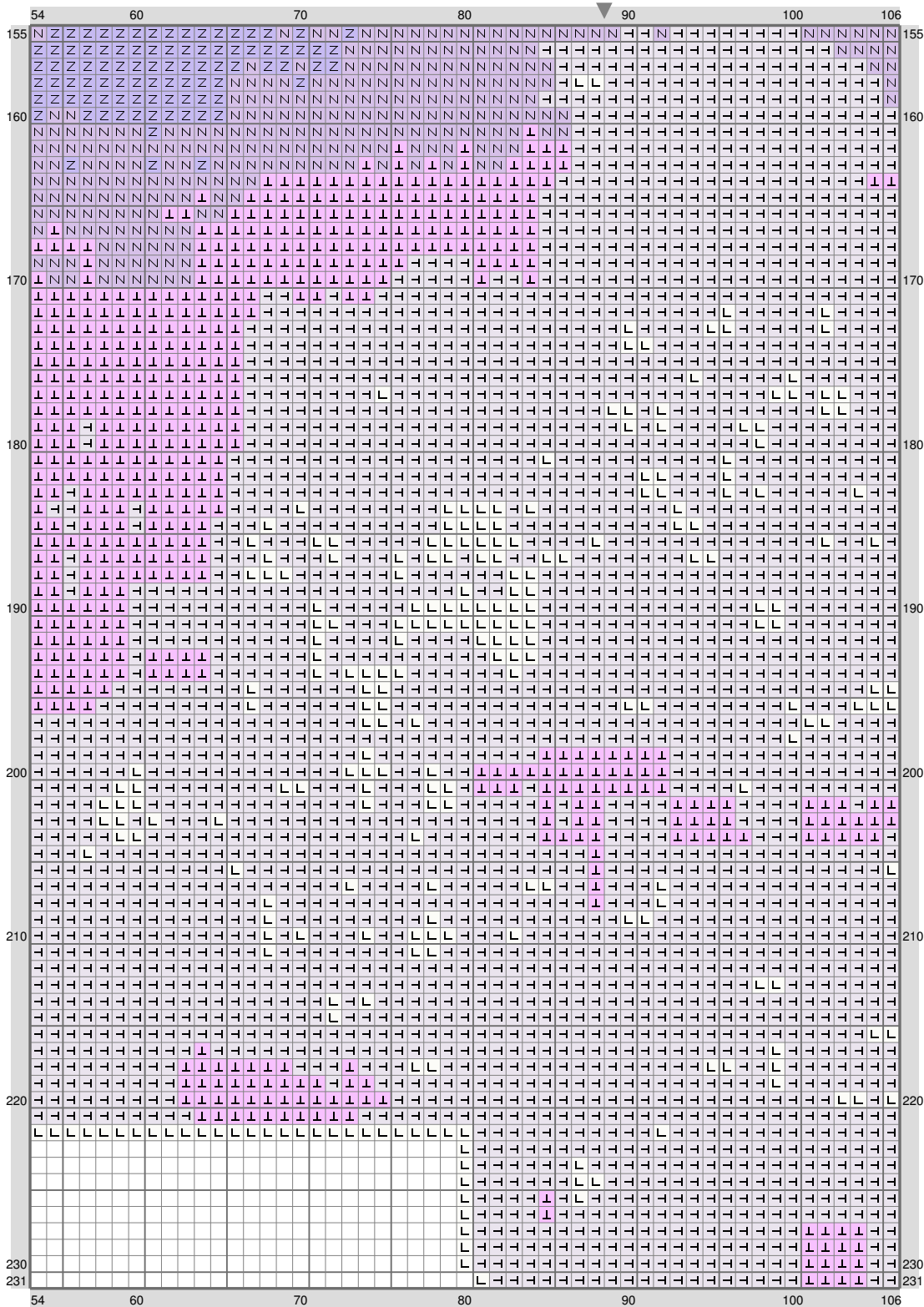
(This chart is printed using KG-Chart LE for Cross Stitch.)

## ESM Part P



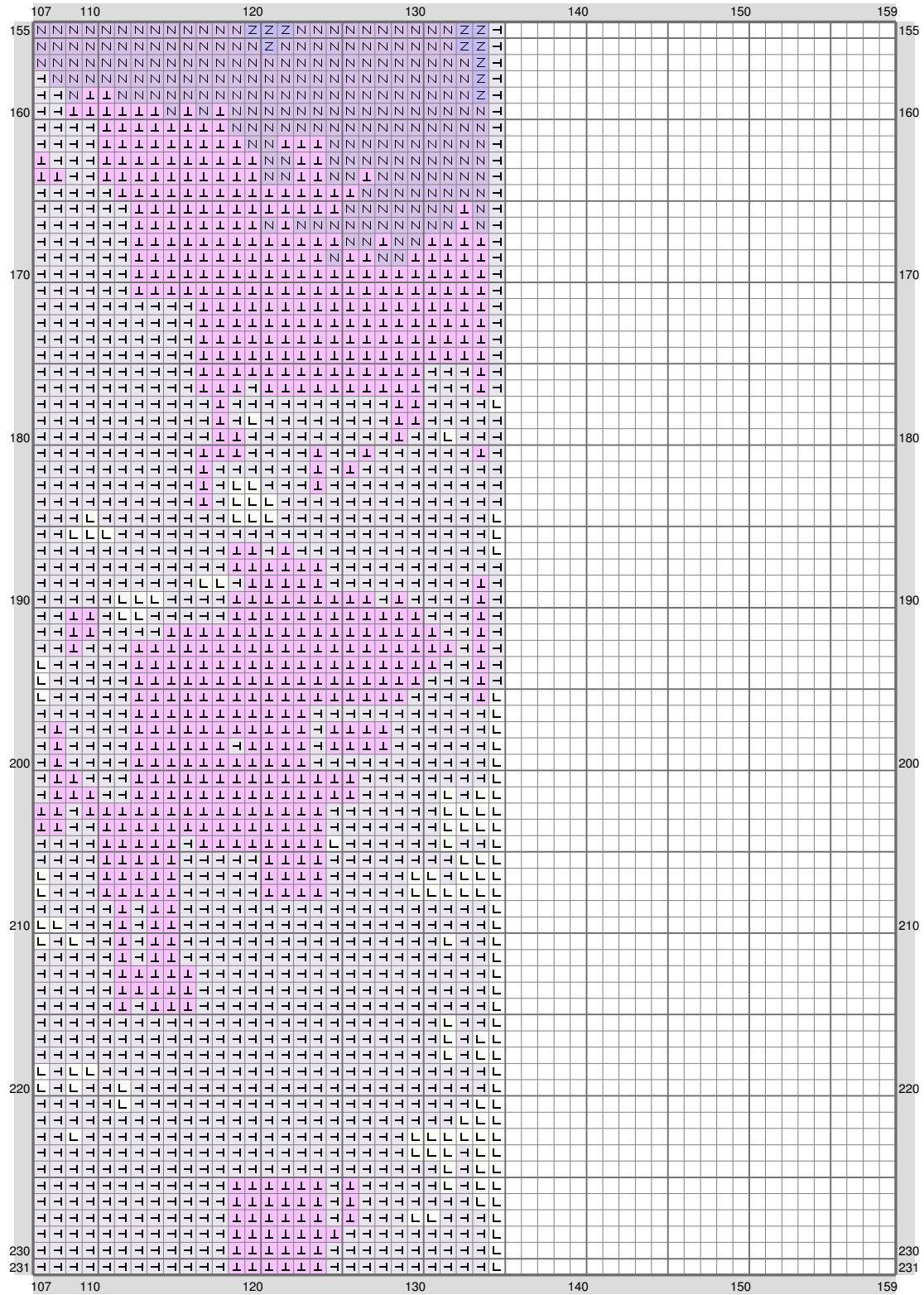
(This chart is printed using KG-Chart LE for Cross Stitch.)

## ESM Part P



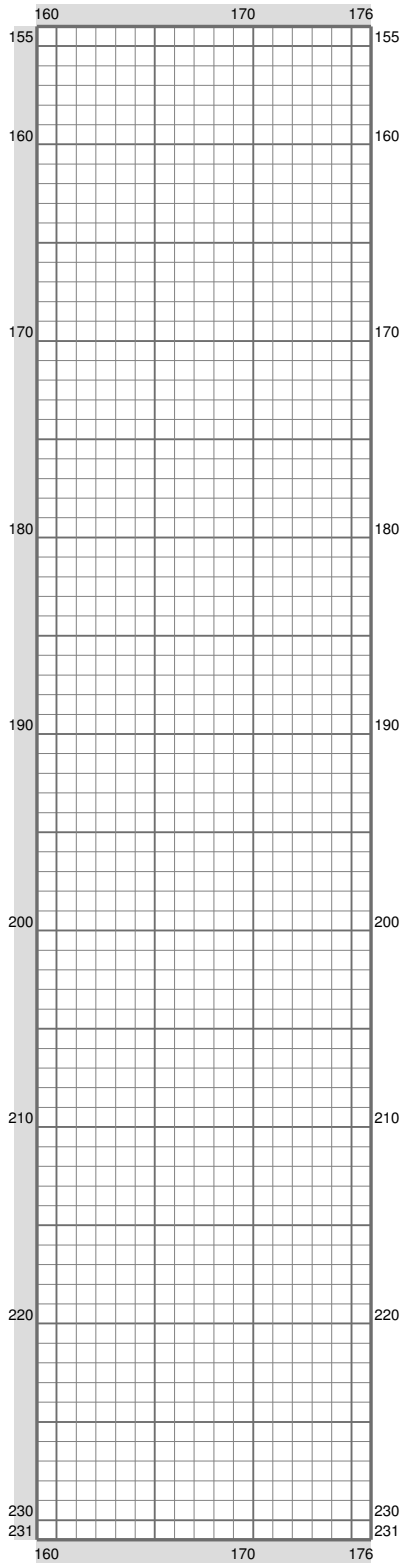
(This chart is printed using KG-Chart LE for Cross Stitch.)

# ESM Part P



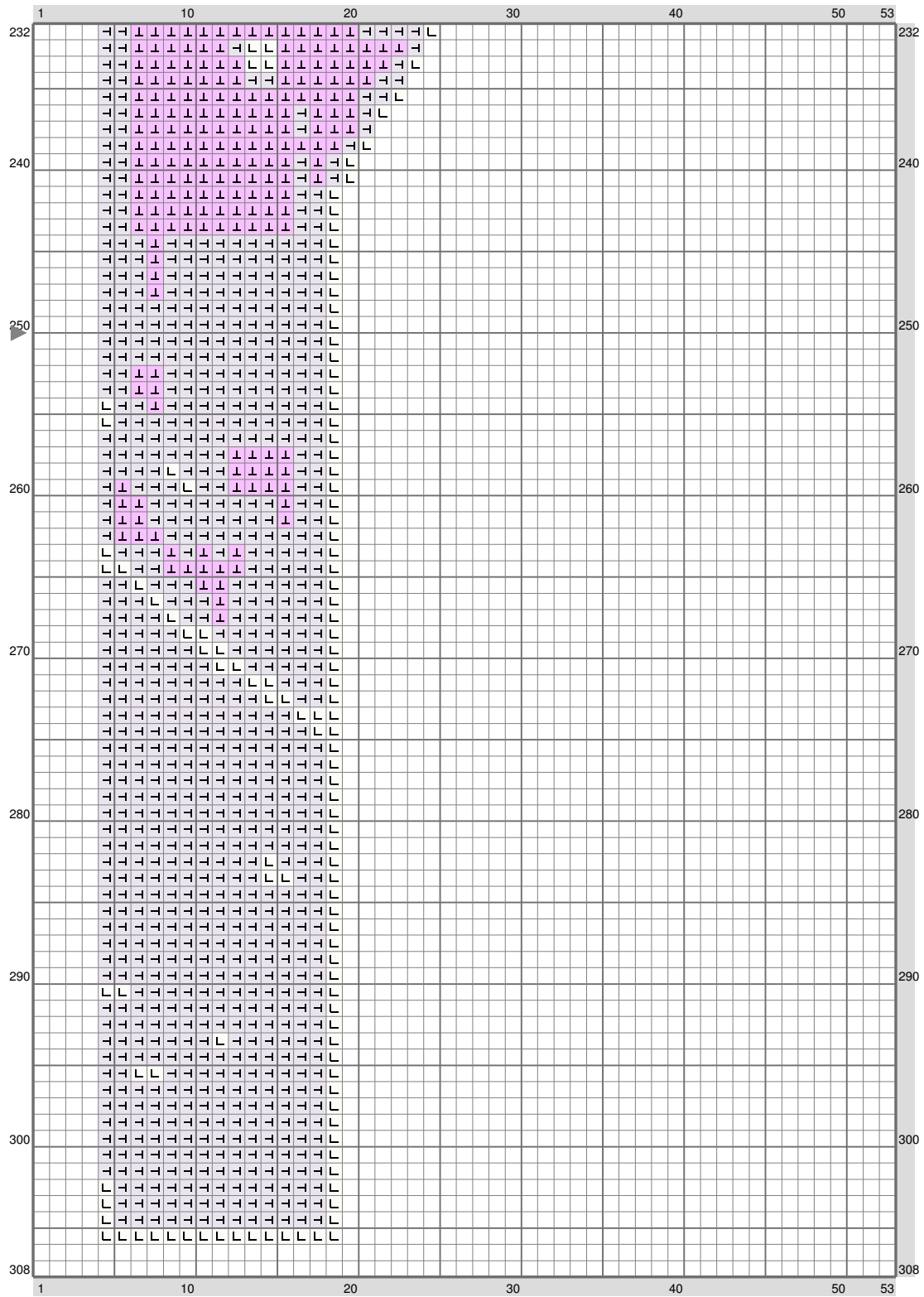
(This chart is printed using KG-Chart LE for Cross Stitch.)

# ESM Part P



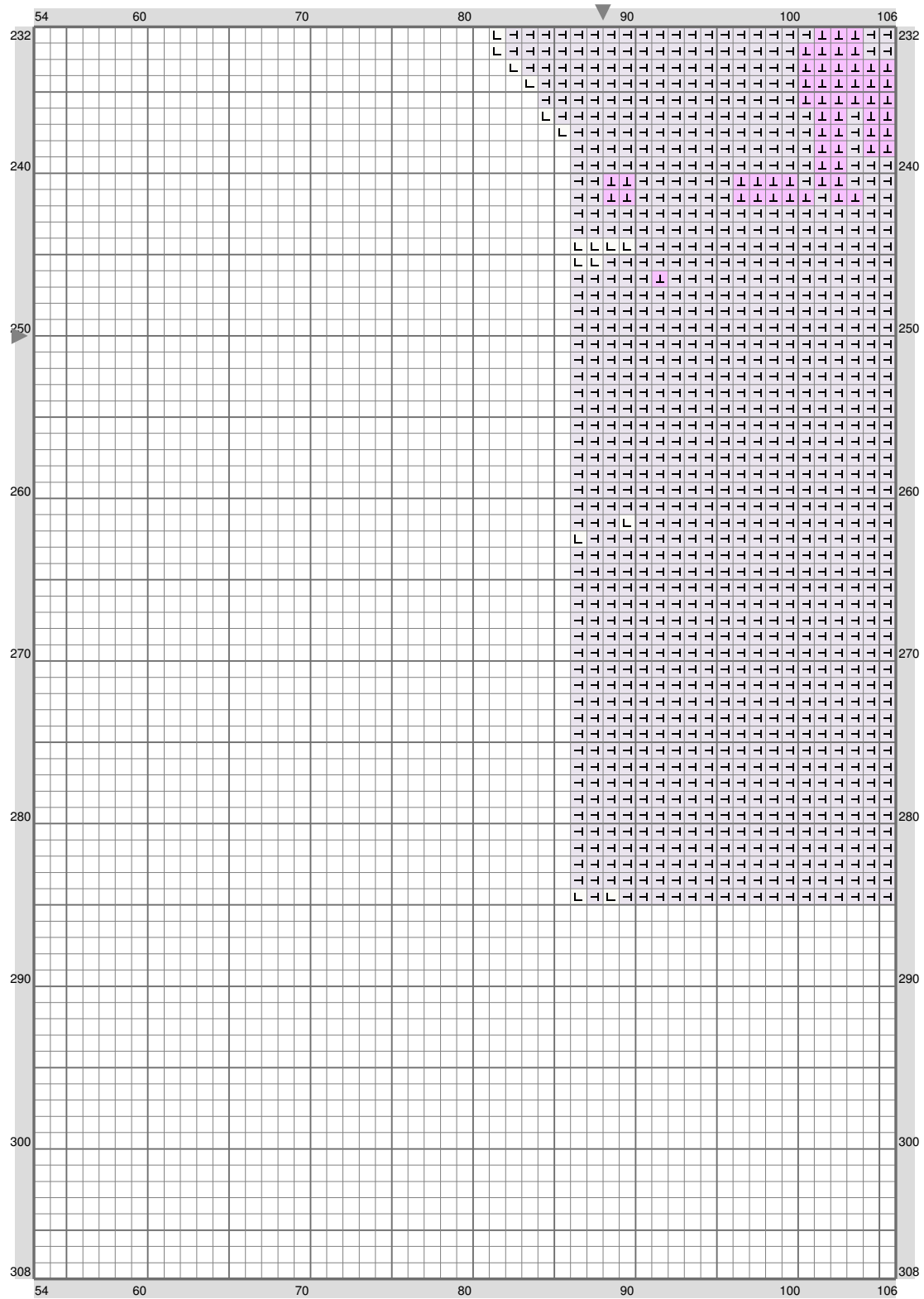
(This chart is printed using KG-Chart LE for Cross Stitch.)

# ESM Part P

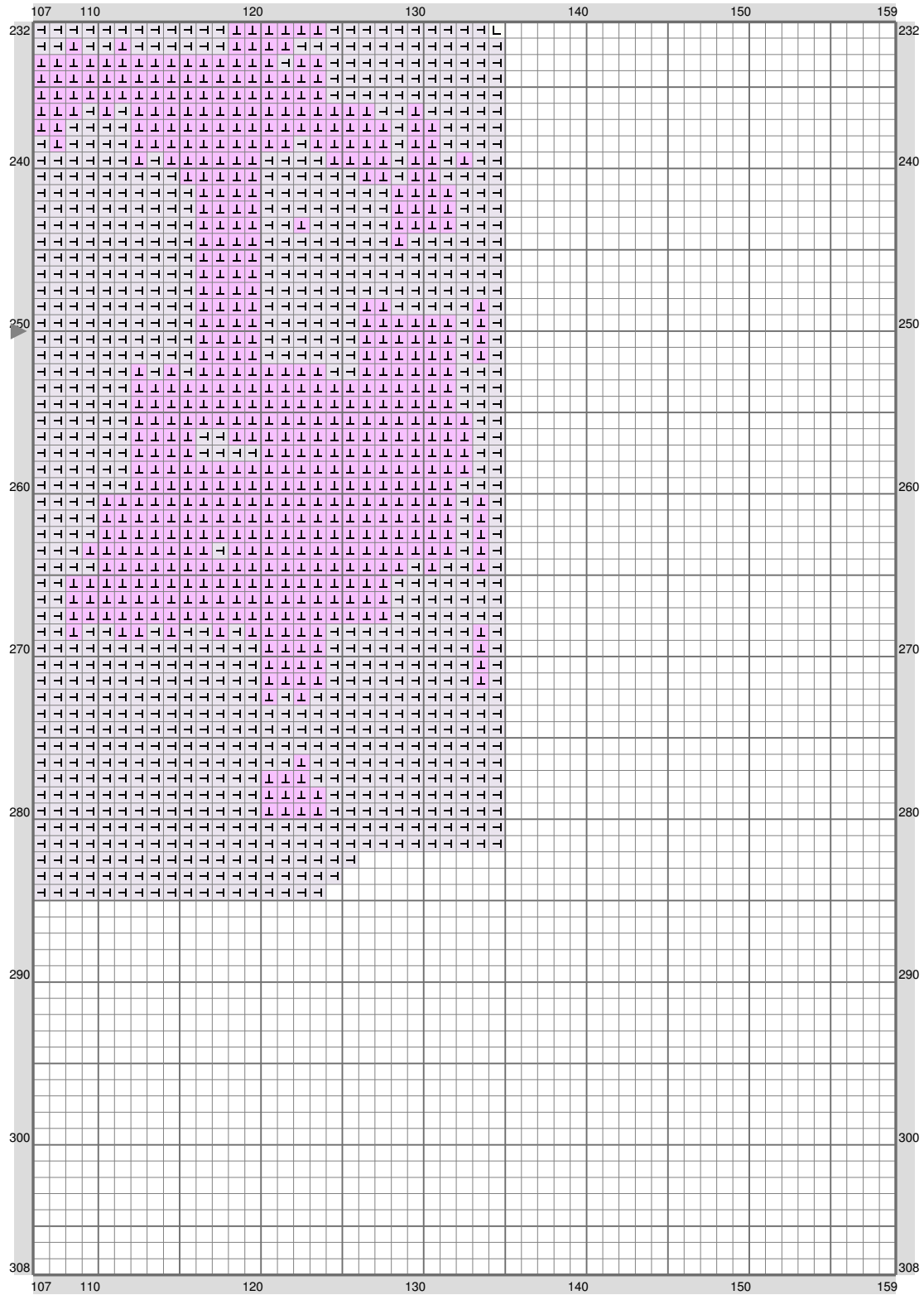


(This chart is printed using KG-Chart LE for Cross Stitch.)

# ESM Part P



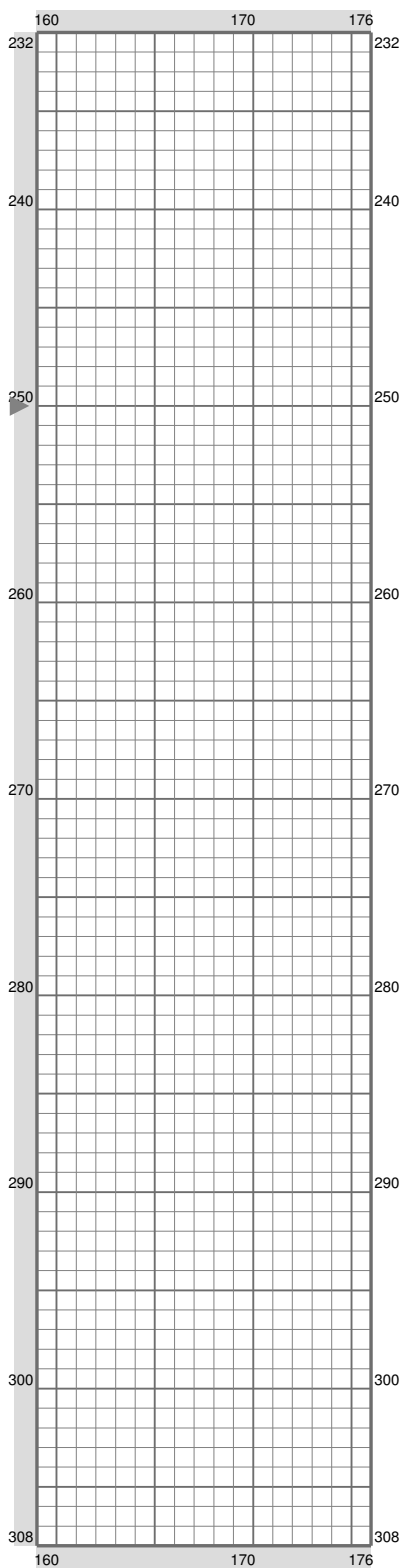
# ESM Part P



(This chart is printed using KG-Chart LE for Cross Stitch.)

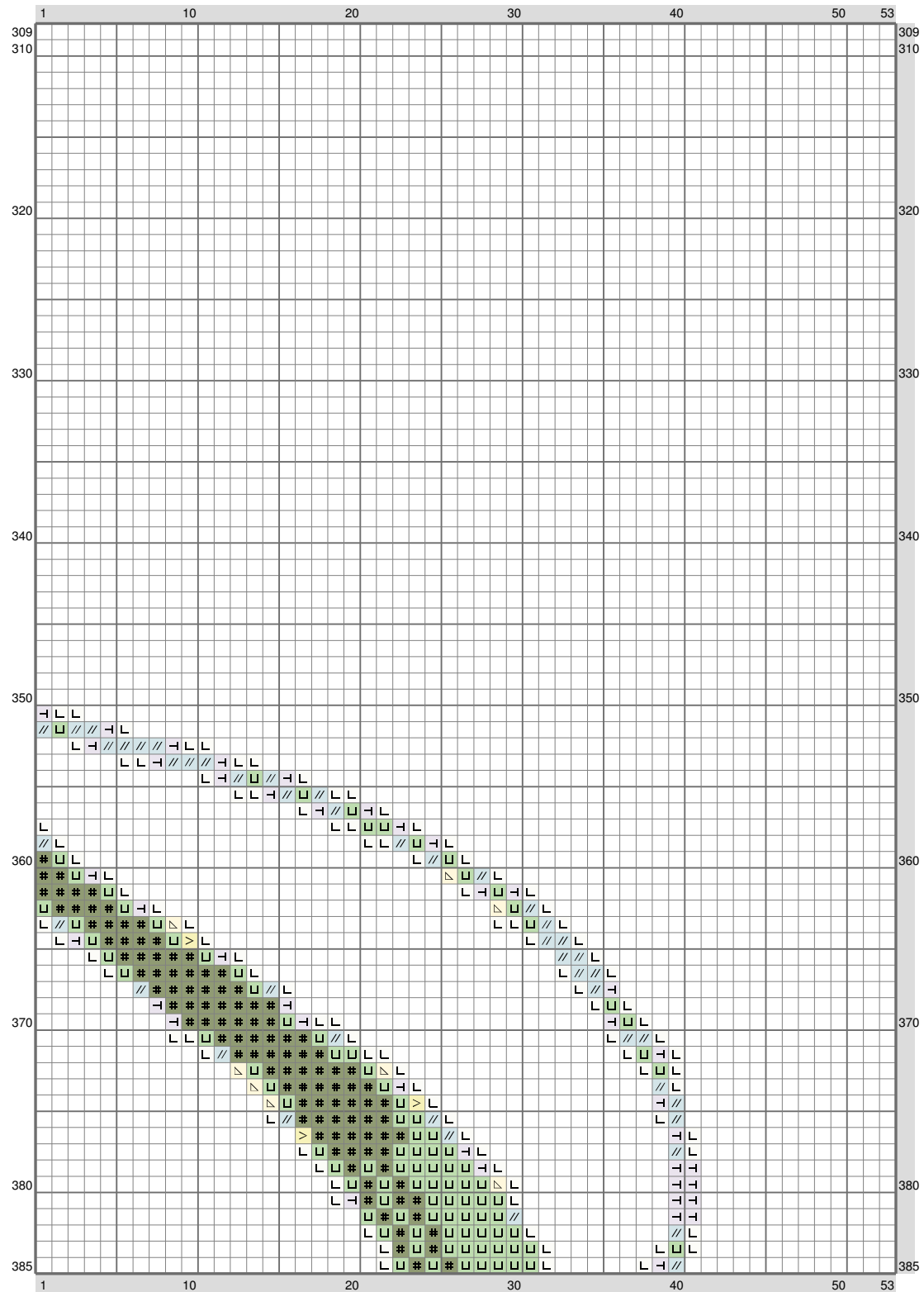


## ESM Part P



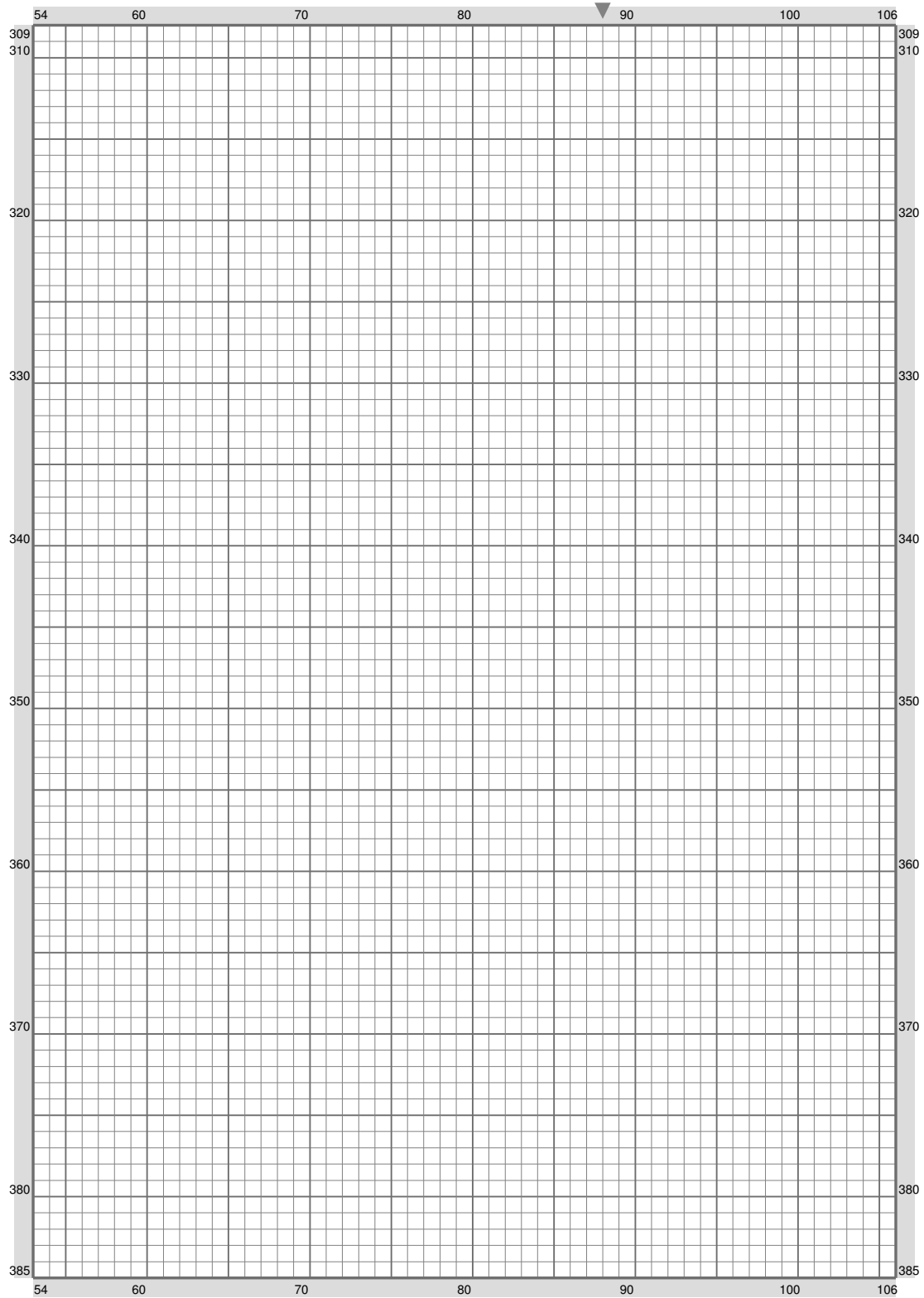
(This chart is printed using KG-Chart LE for Cross Stitch.)

# ESM Part P



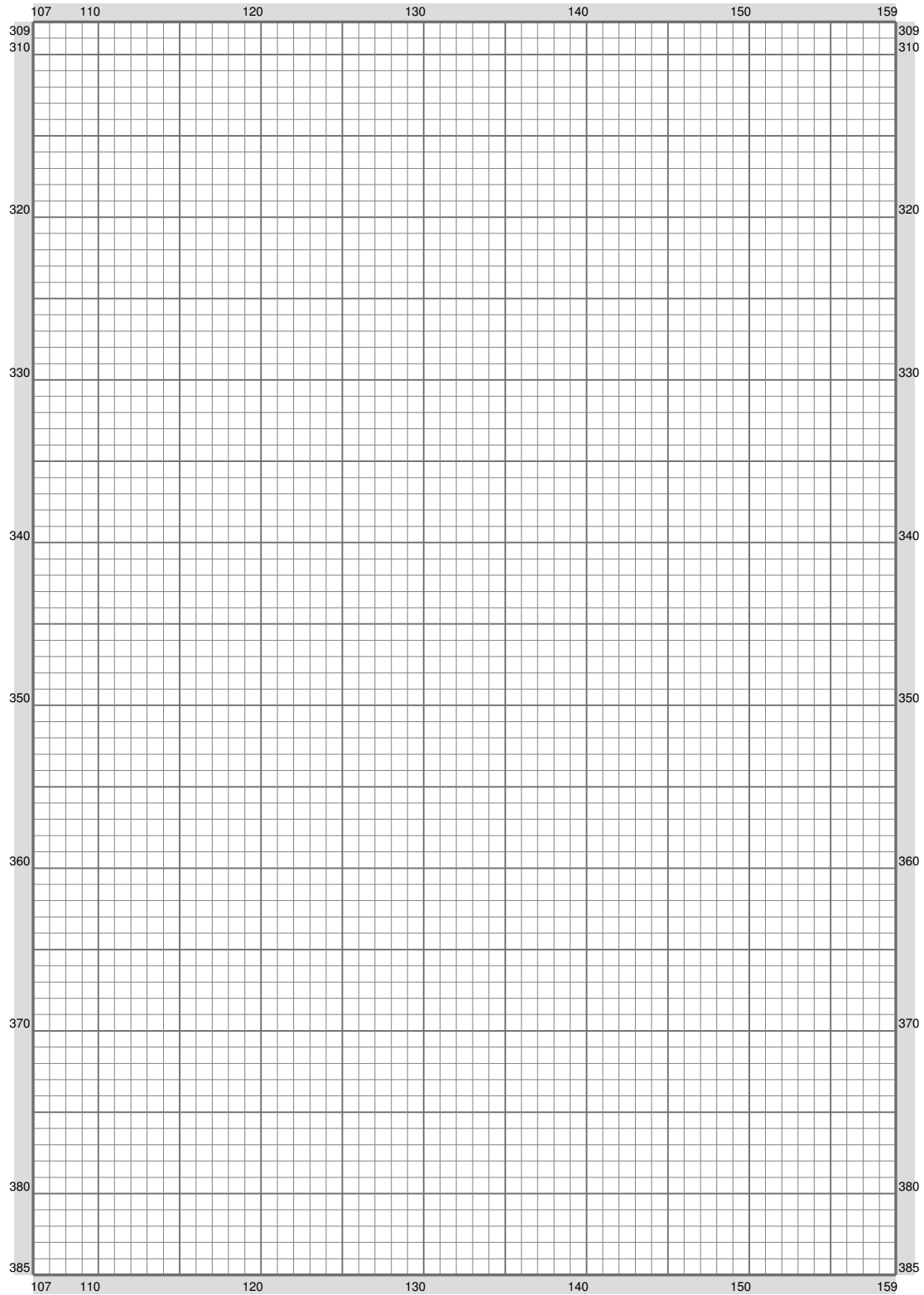
(This chart is printed using KG-Chart LE for Cross Stitch.)

# ESM Part P



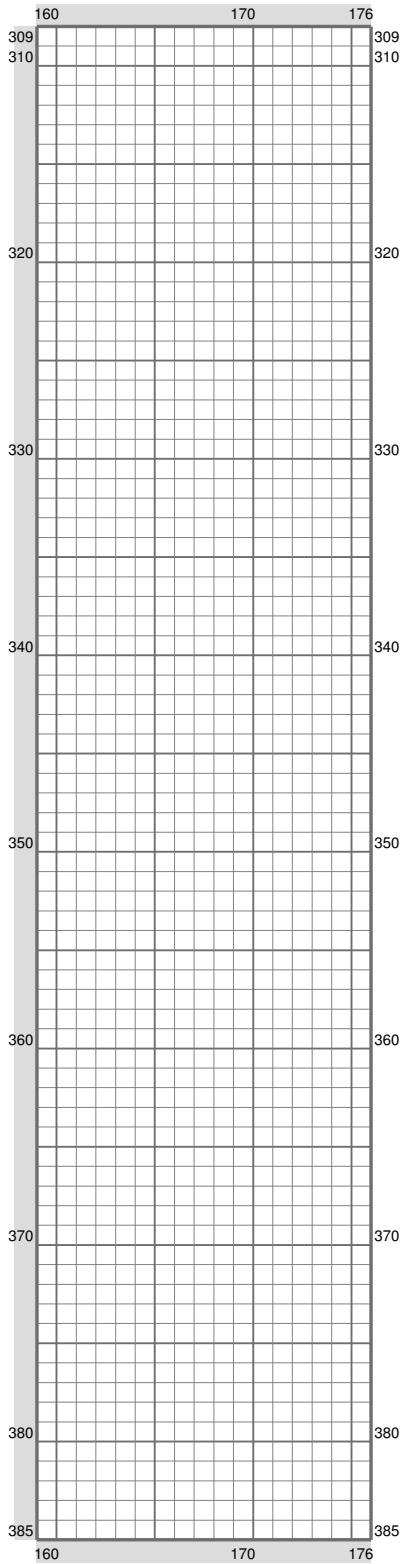
(This chart is printed using KG-Chart LE for Cross Stitch.)

## ESM Part P



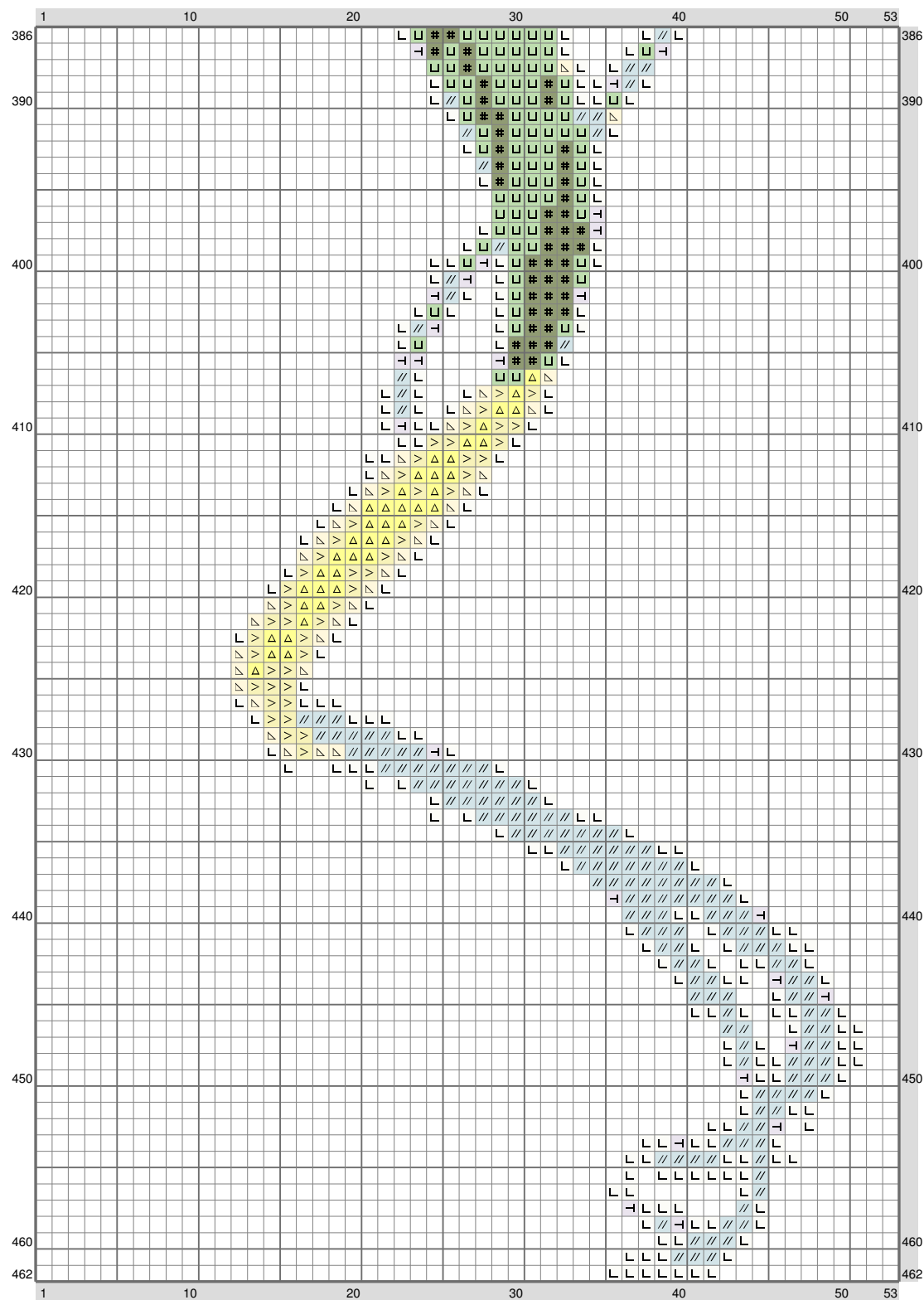
(This chart is printed using KG-Chart LE for Cross Stitch.)

# ESM Part P



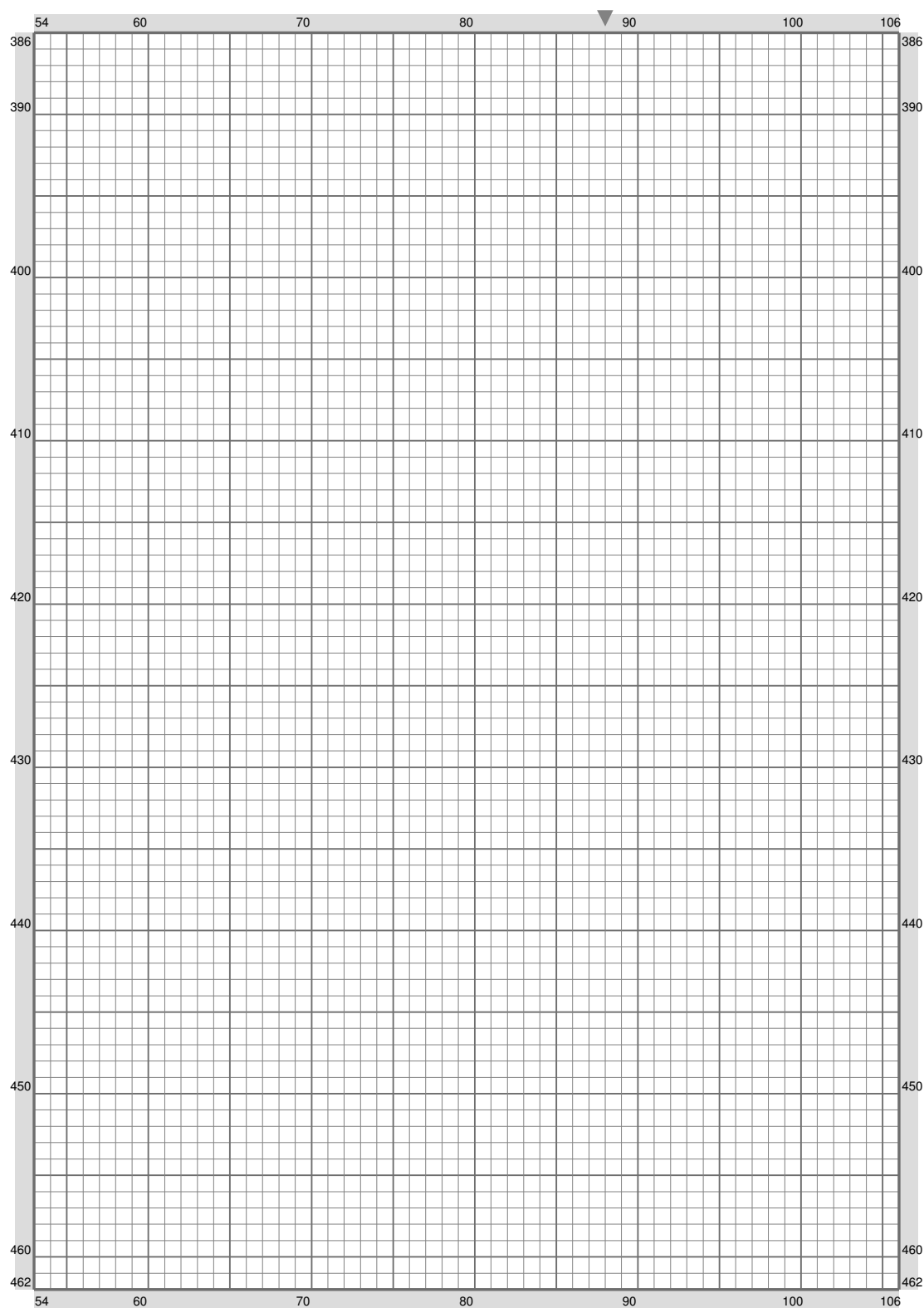
(This chart is printed using KG-Chart LE for Cross Stitch.)

## ESM Part P



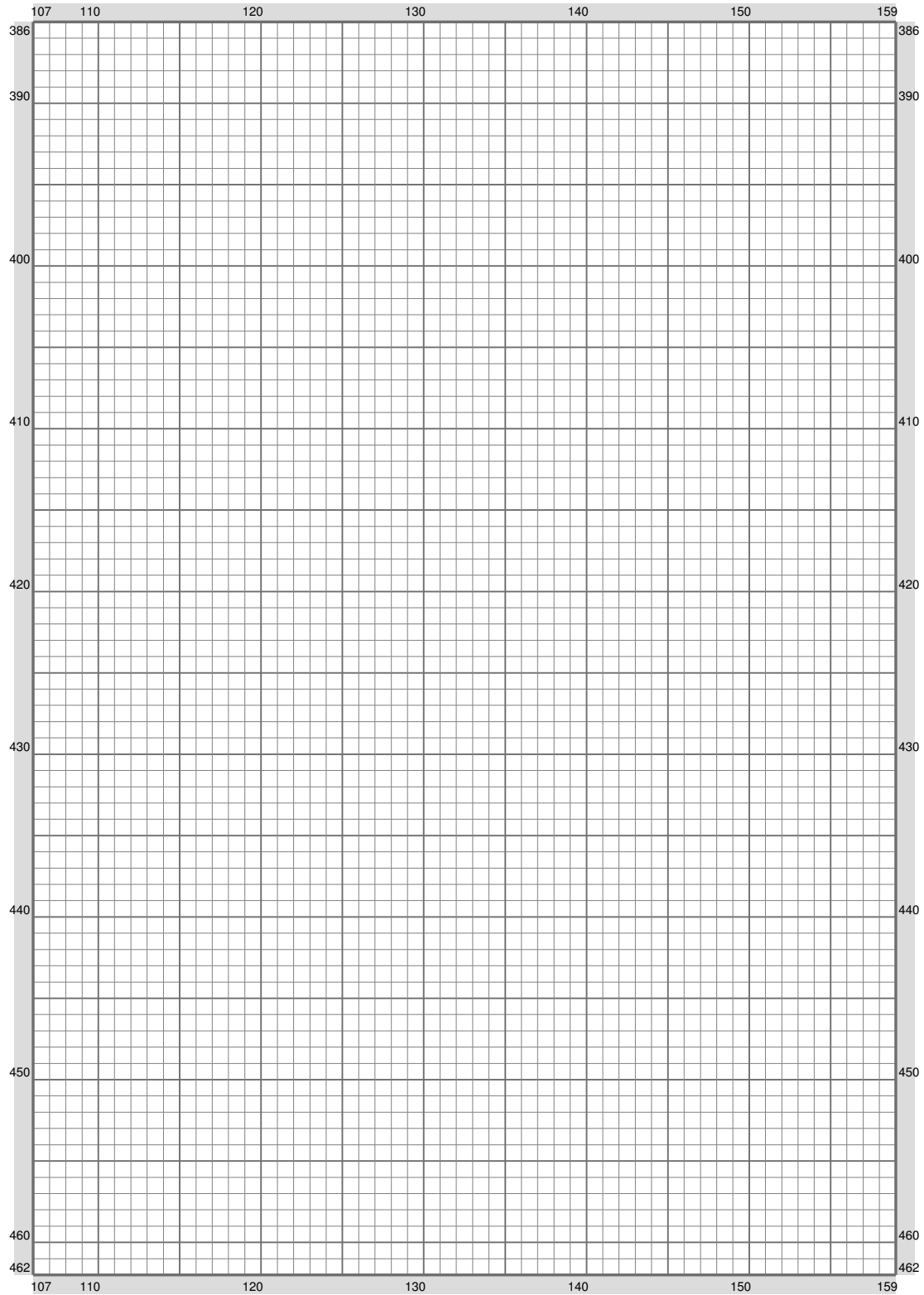
(This chart is printed using KG-Chart LE for Cross Stitch.)

## ESM Part P



(This chart is printed using KG-Chart LE for Cross Stitch.)

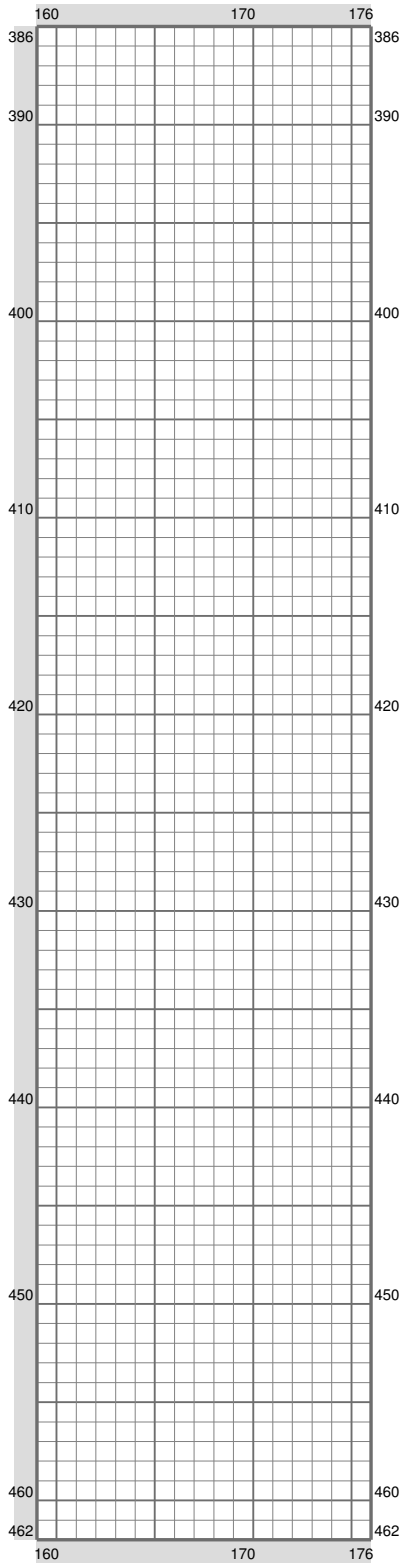
## ESM Part P



(This chart is printed using KG-Chart LE for Cross Stitch.)

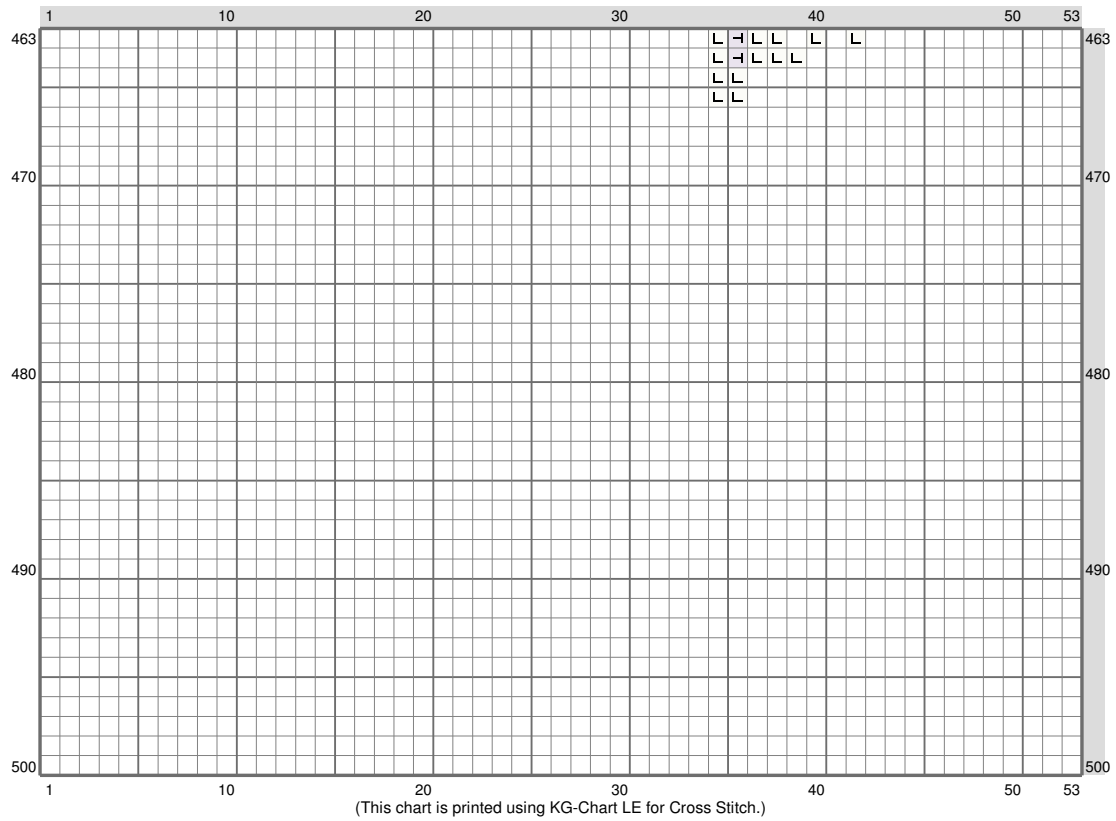


# ESM Part P

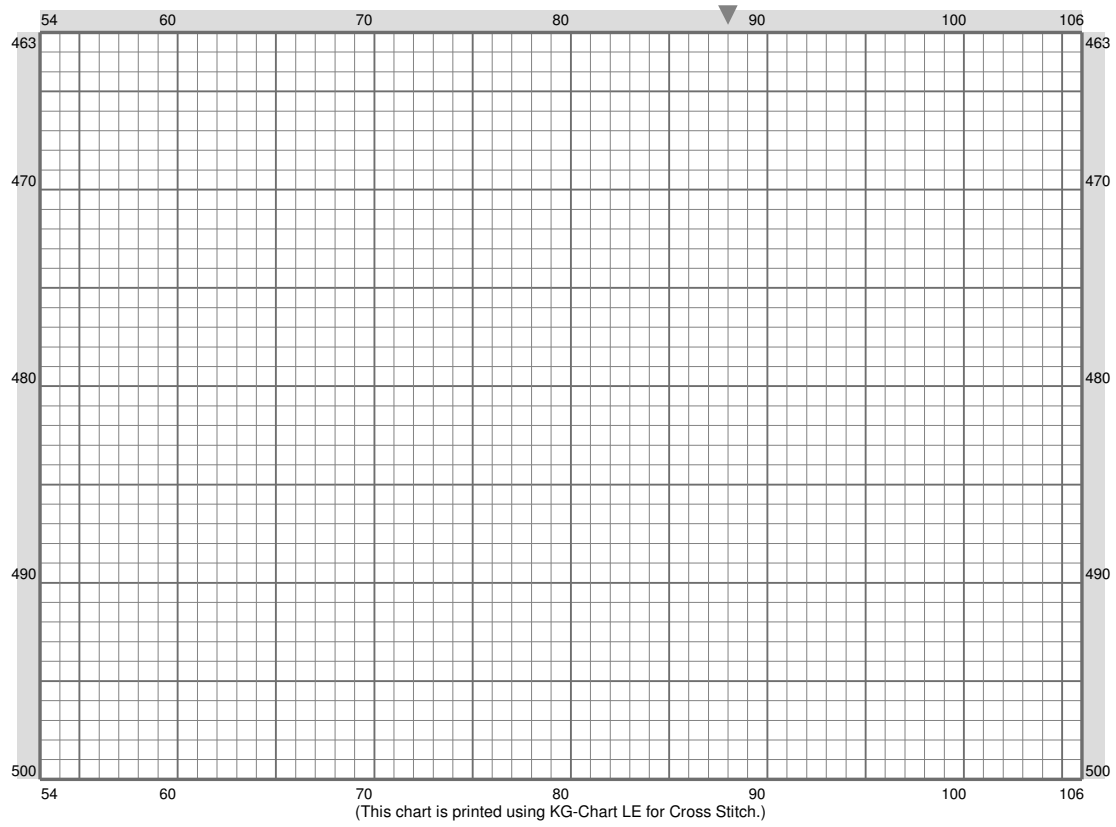


(This chart is printed using KG-Chart LE for Cross Stitch.)

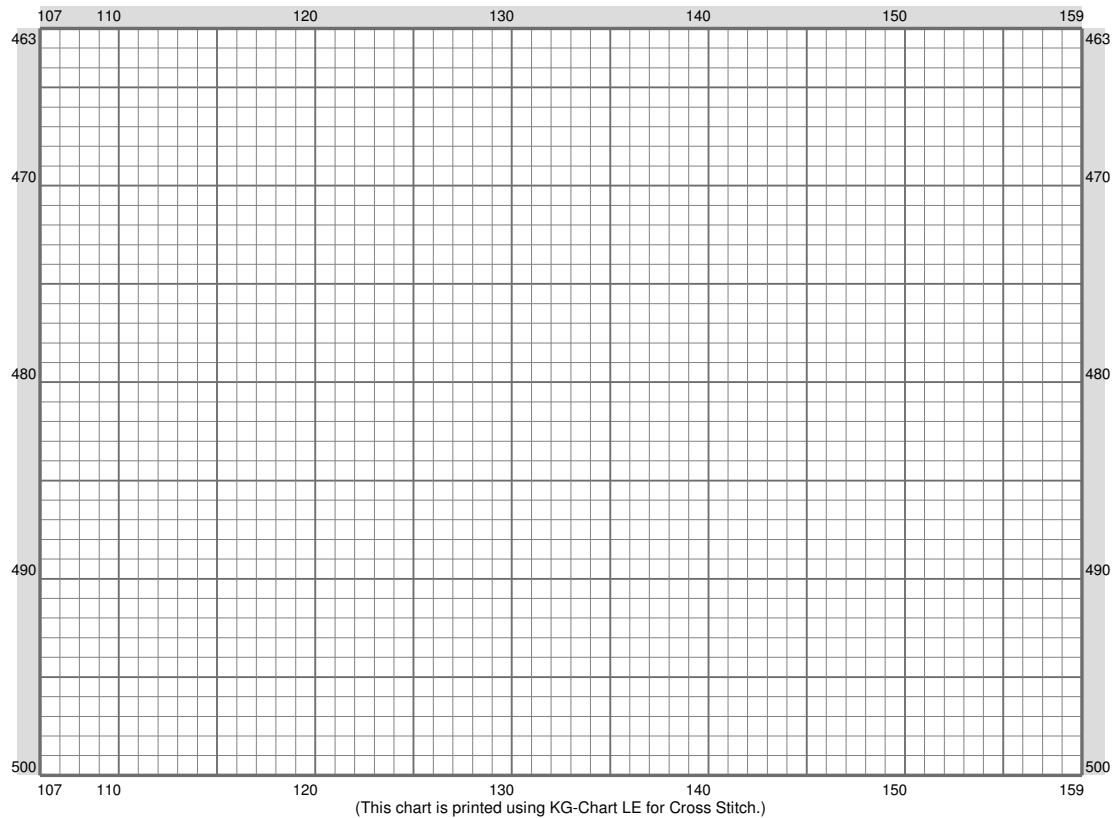
## ESM Part P



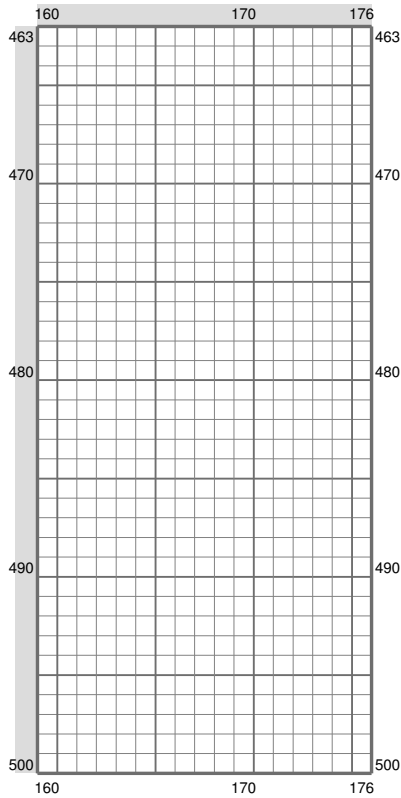
## ESM Part P



## ESM Part P



# ESM Part P



Stitch Count: 176w x 500h  
 Finished Size: 22.35 cm x 63.5 cm (20 ct./inch)  
 Cloth: Aida  
 Cloth's Color: White  
 # of colors: 28 Colors

## Color Table (DMC)

### Cross Stitch

+	824	(434 ct)
≡	312	(3554 ct)
□	825	(1887 ct)
—	3807	(1432 ct)
×	322	(2798 ct)
*	793	(1006 ct)
I	334	(653 ct)
#	3364	(156 ct)
•	794	(423 ct)
∇	826	(1018 ct)
^	799	(1032 ct)
	809	(843 ct)
<	167	(56 ct)
U	369	(185 ct)
/	169	(1659 ct)
z	159	(1989 ct)
N	211	(1511 ct)
//	3753	(232 ct)
A	3820	(152 ct)
C	973	(111 ct)
F	743	(35 ct)
T	738	(31 ct)
⊥	153	(3578 ct)
⊥	762	(8684 ct)
△	445	(53 ct)
>	3078	(55 ct)
△	3823	(45 ct)
L	BLANC	(2325 ct)

(This chart is printed using DMC's Chart E for Cross-Stitch.)