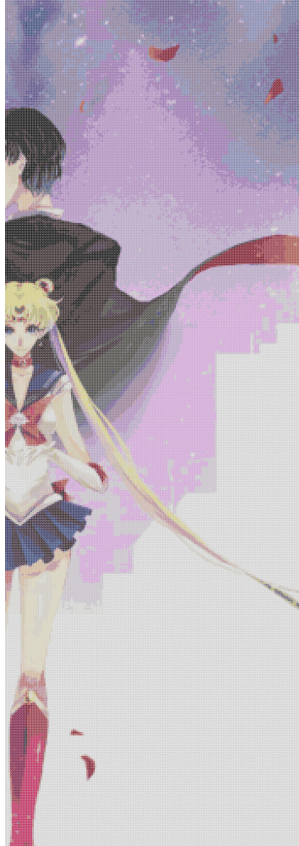
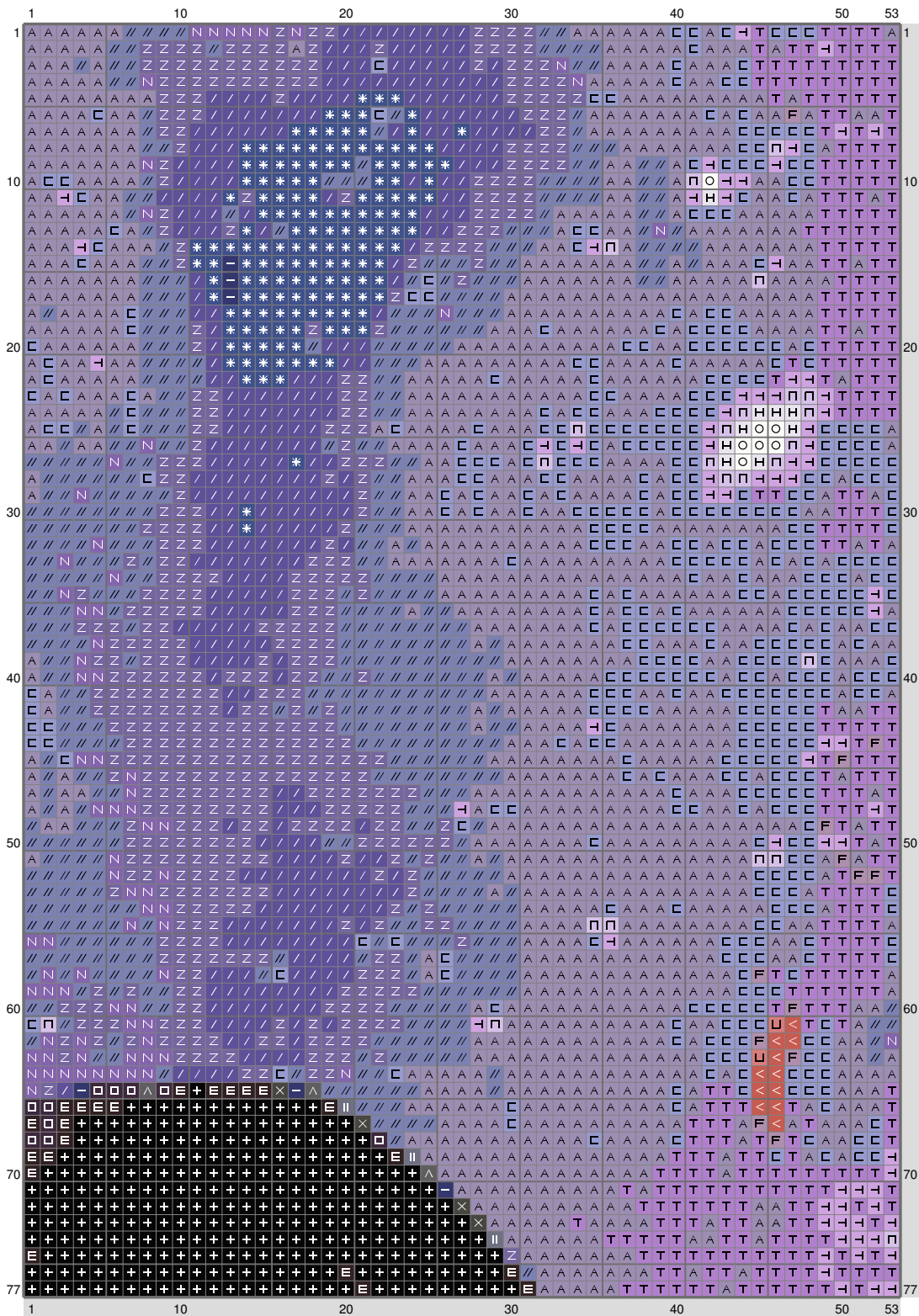


ESM Part O

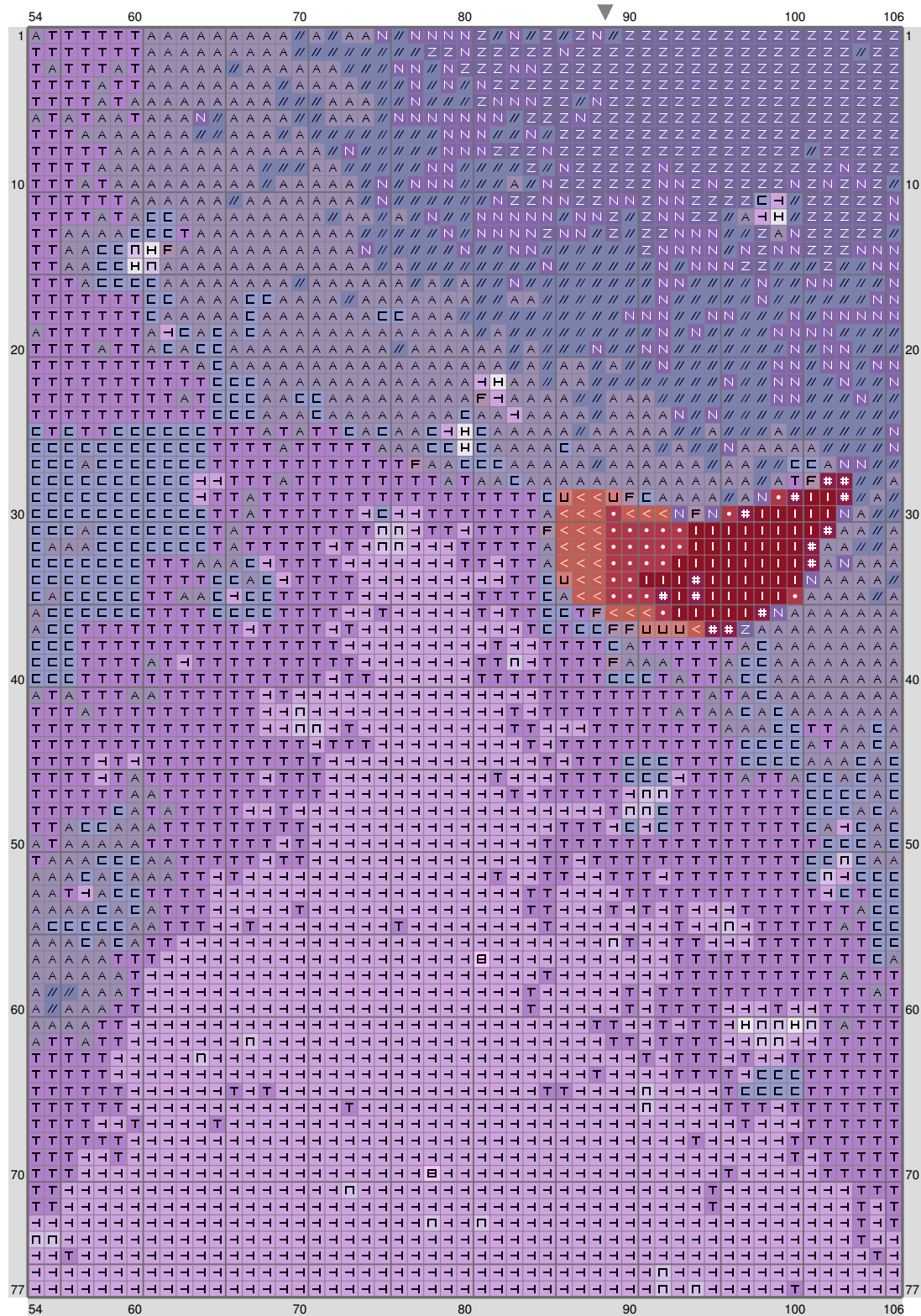


ESM Part O



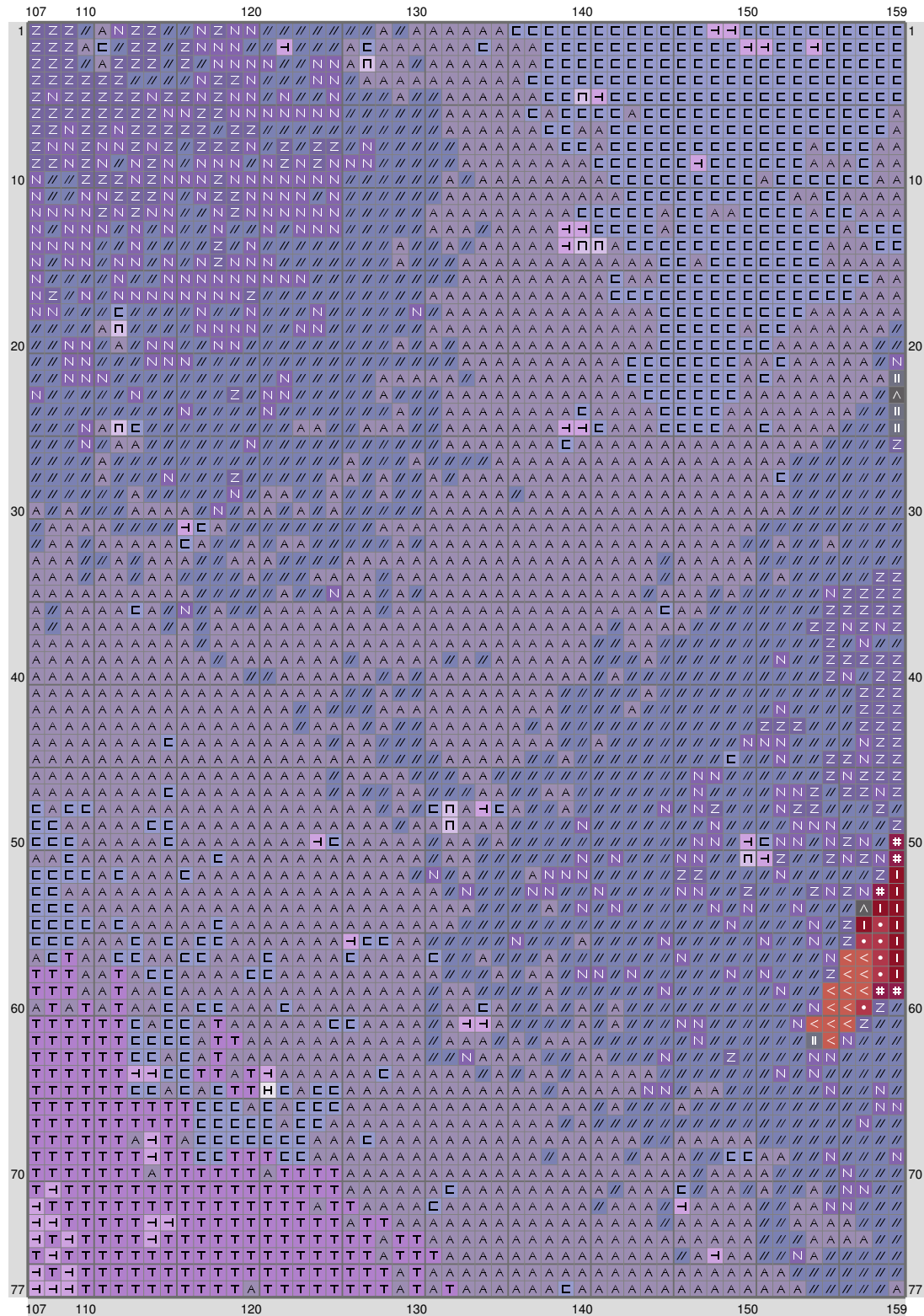
(This chart is printed using KG-Chart LE for Cross Stitch.)

ESM Part O



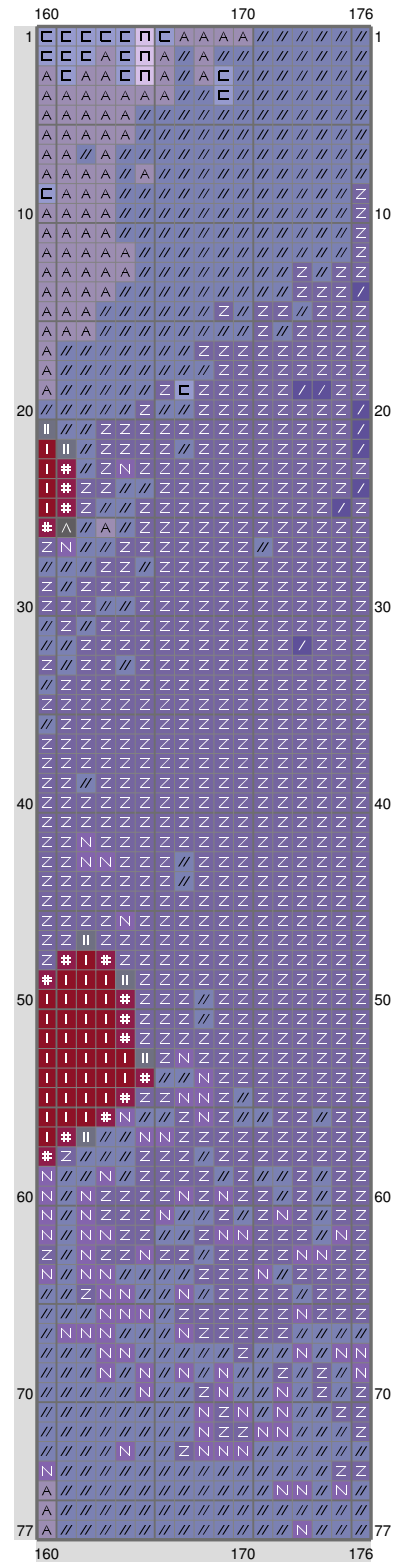
(This chart is printed using KG-Chart LE for Cross Stitch.)

ESM Part O



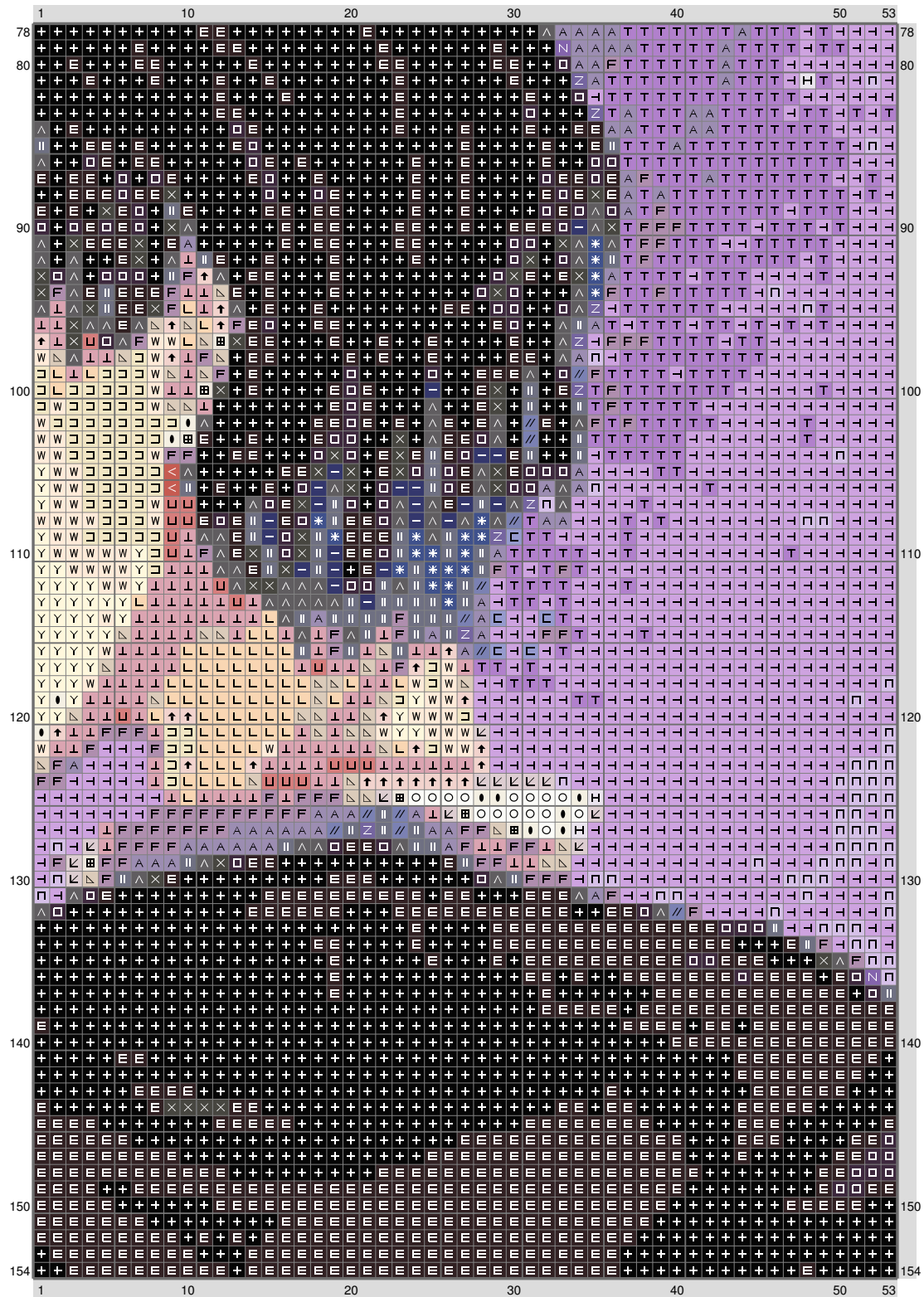
(This chart is printed using KG-Chart LE for Cross Stitch.)

ESM Part O



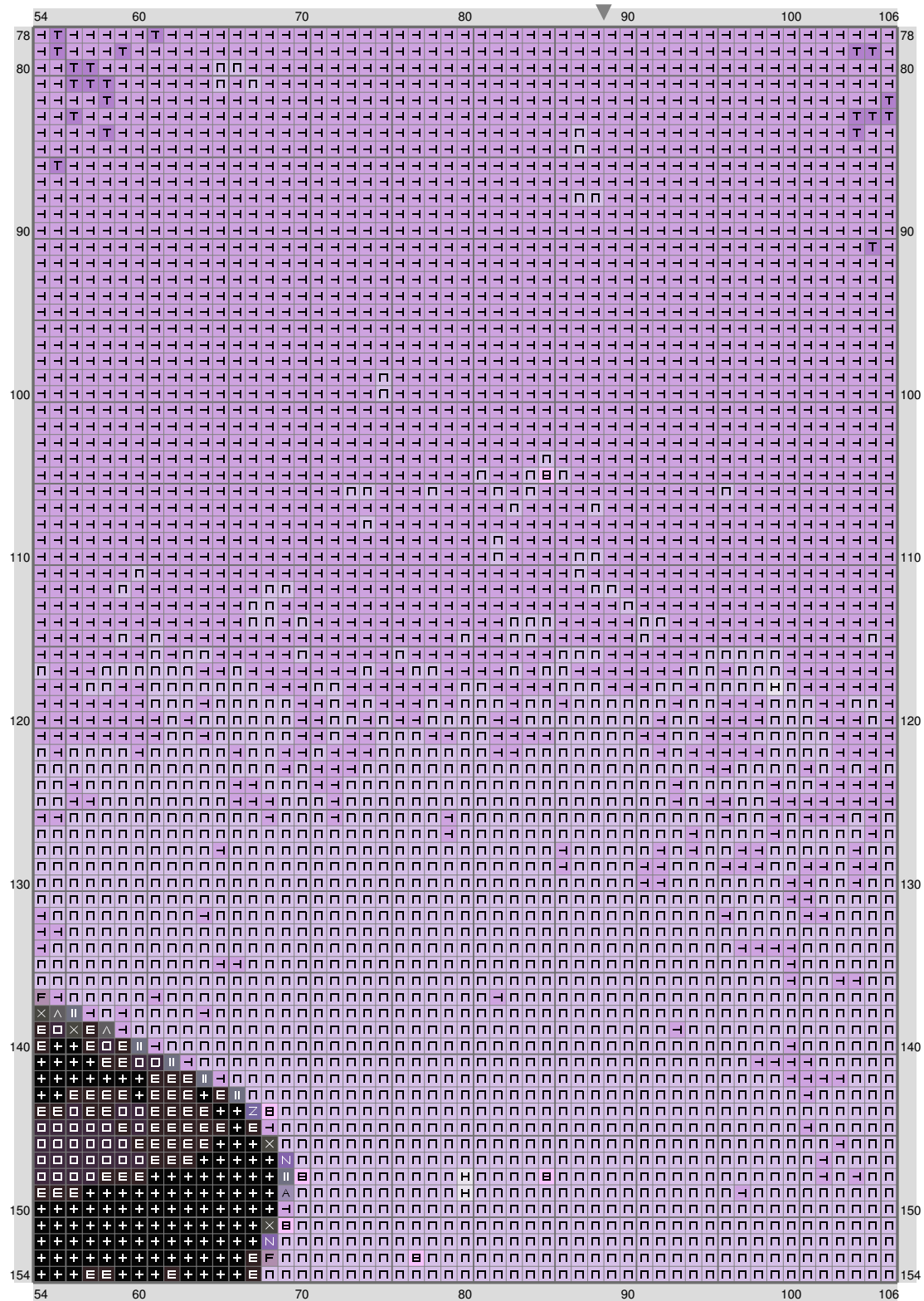
(This chart is printed using KG-Chart LE for Cross Stitch.)

ESM Part O



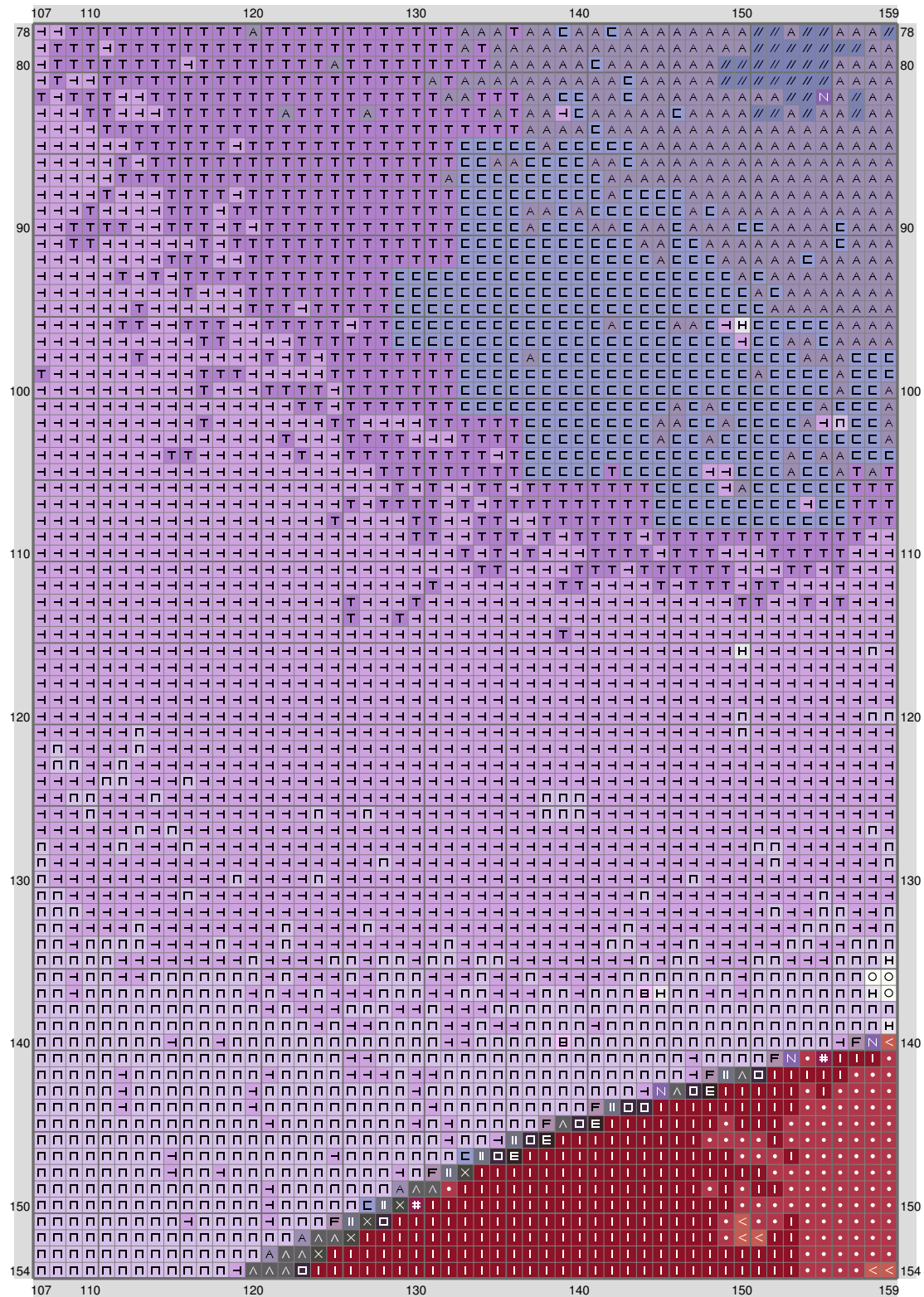
(This chart is printed using KG-Chart LE for Cross Stitch.)

ESM Part O



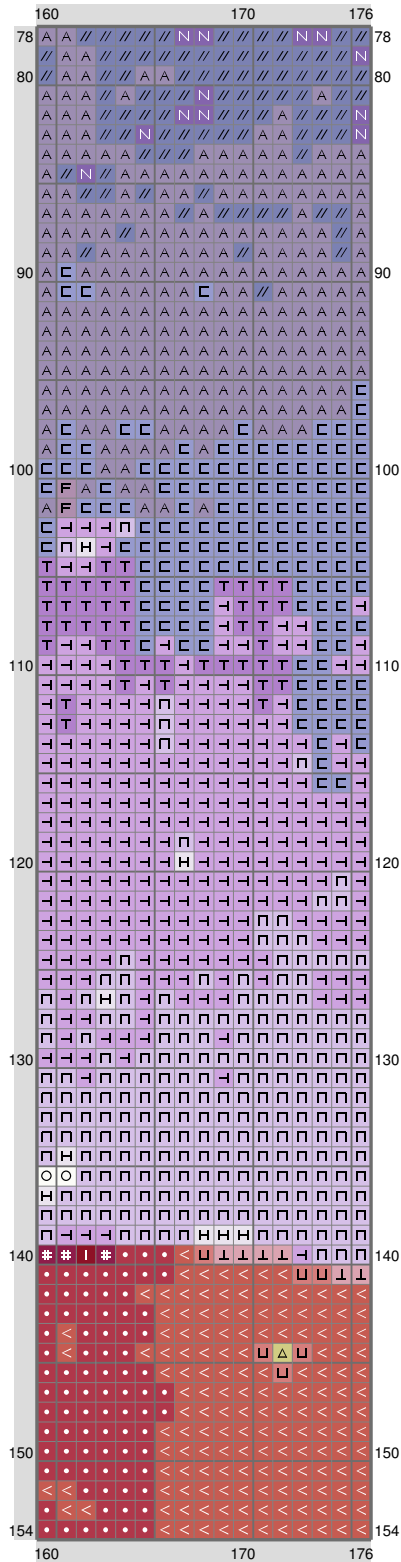
(This chart is printed using KG-Chart LE for Cross Stitch.)

ESM Part O



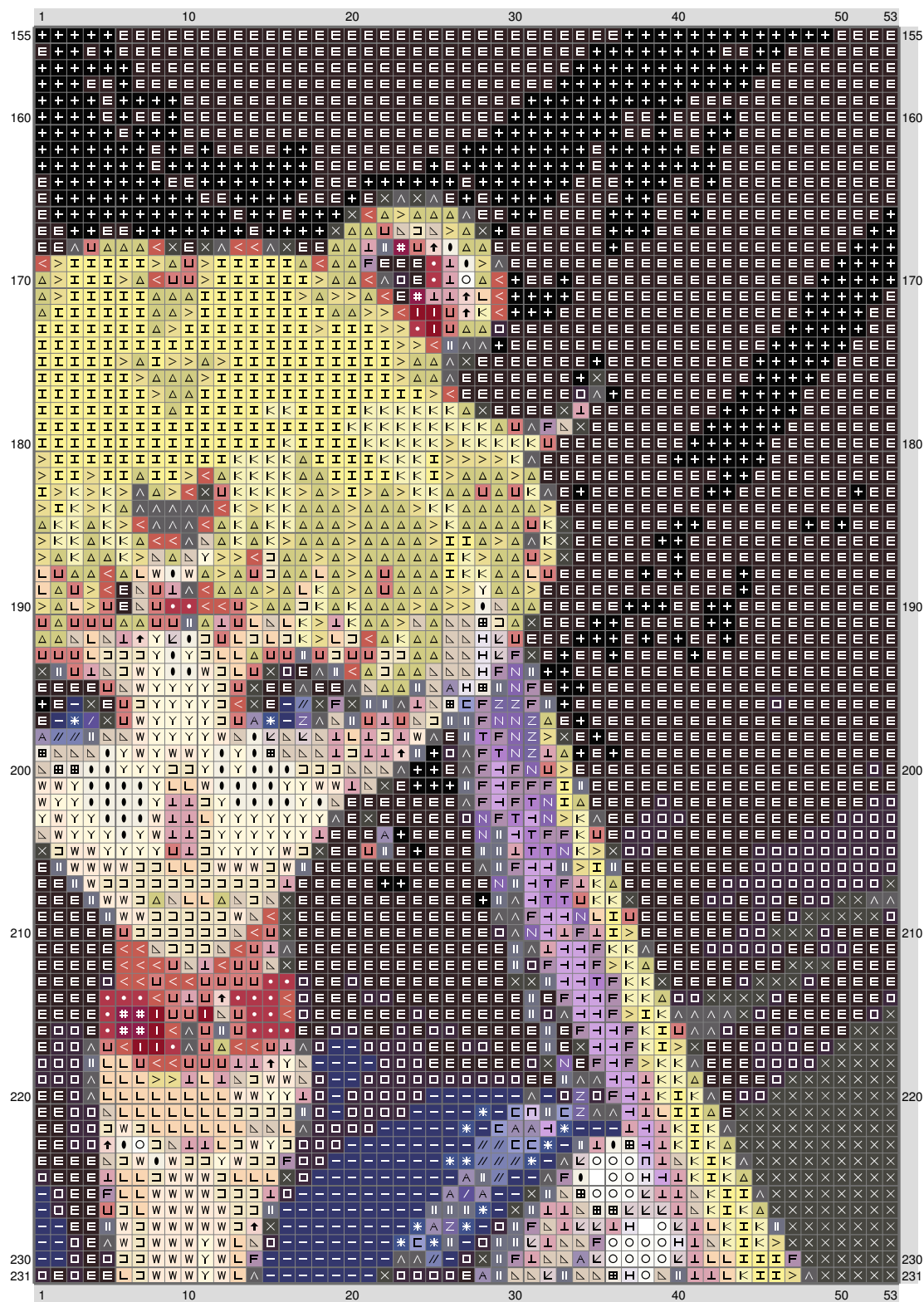
(This chart is printed using KG-Chart LE for Cross Stitch.)

ESM Part O



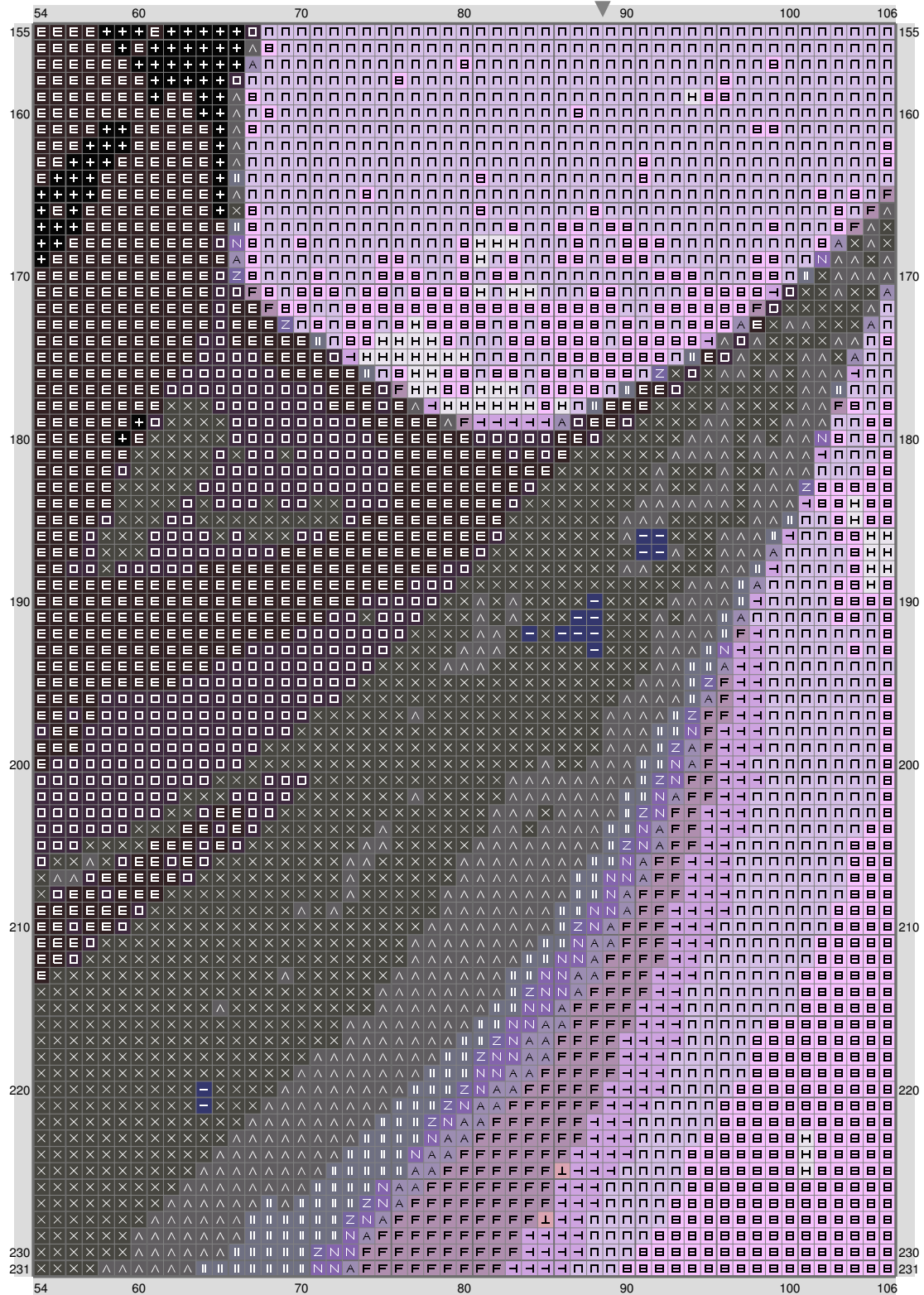
(This chart is printed using KG-Chart LE for Cross Stitch.)

ESM Part O

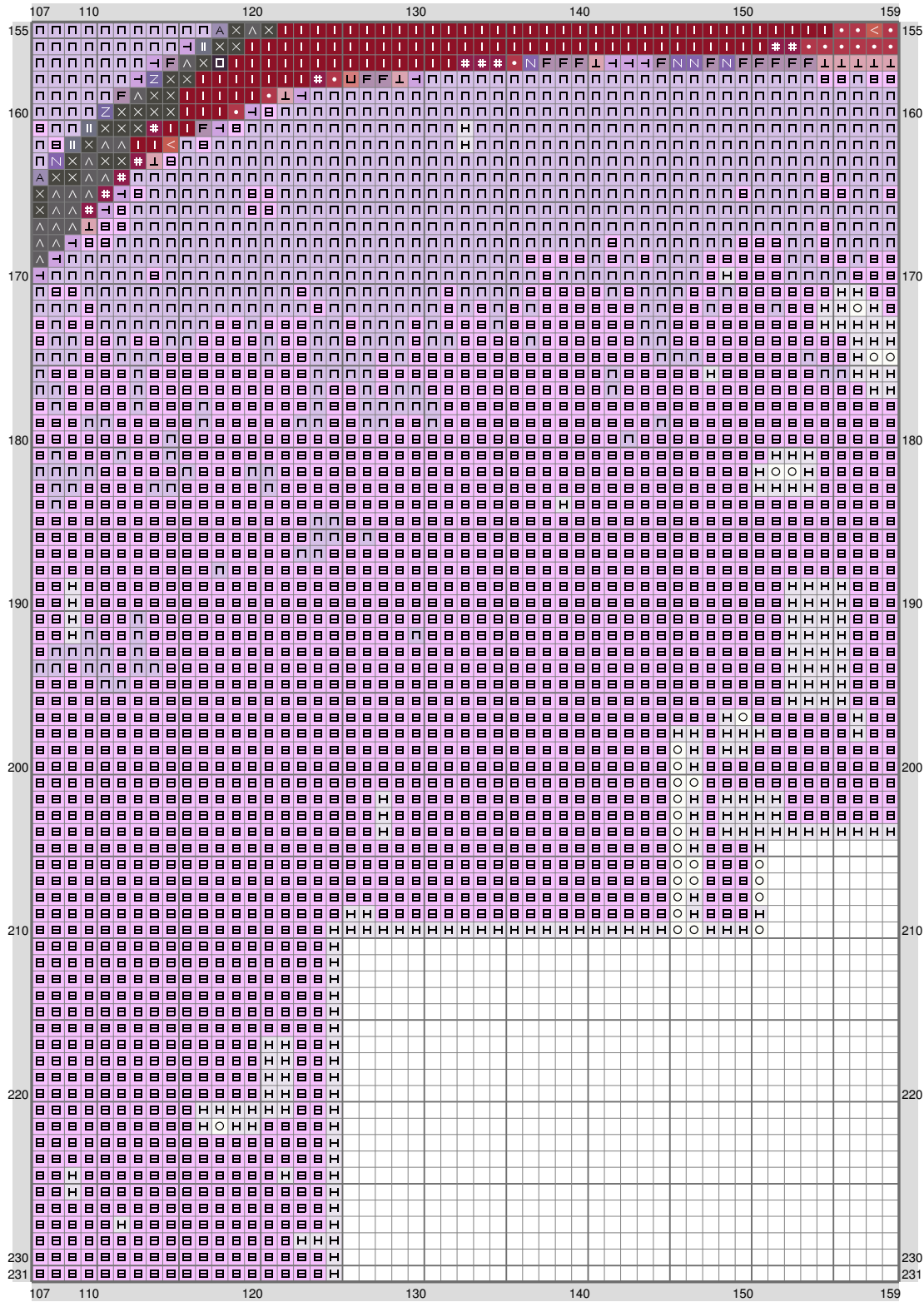


(This chart is printed using KG-Chart LE for Cross Stitch.)

ESM Part O

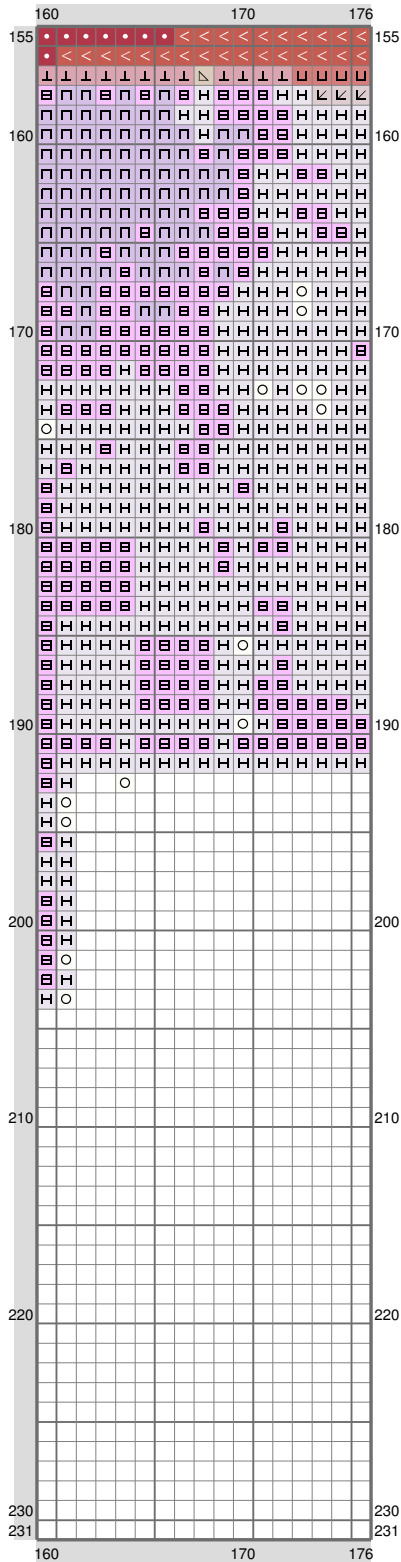


ESM Part O



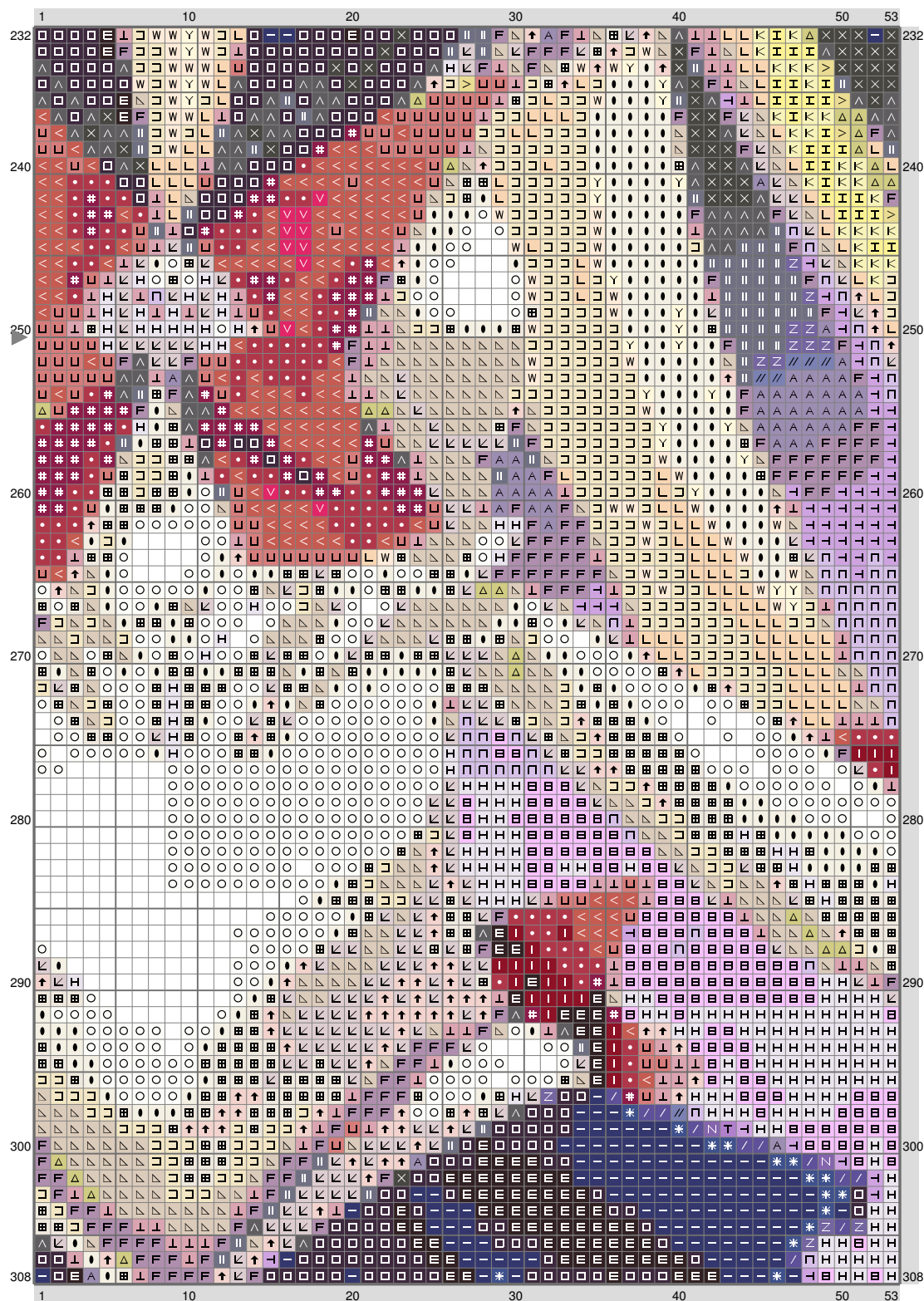
(This chart is printed using KG-Chart LE for Cross Stitch.)

ESM Part O



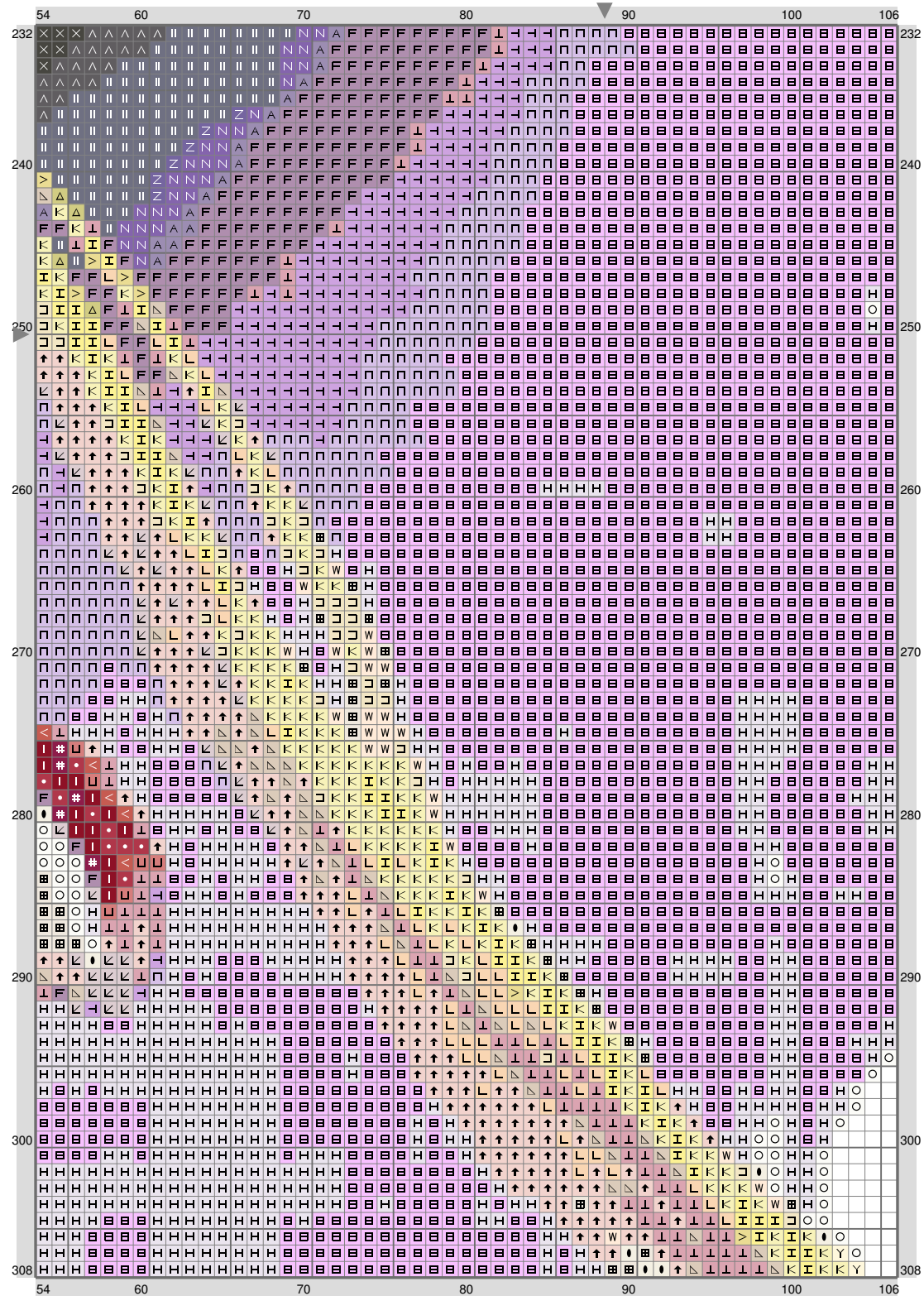
(This chart is printed using KG-Chart LE for Cross Stitch.)

ESM Part O



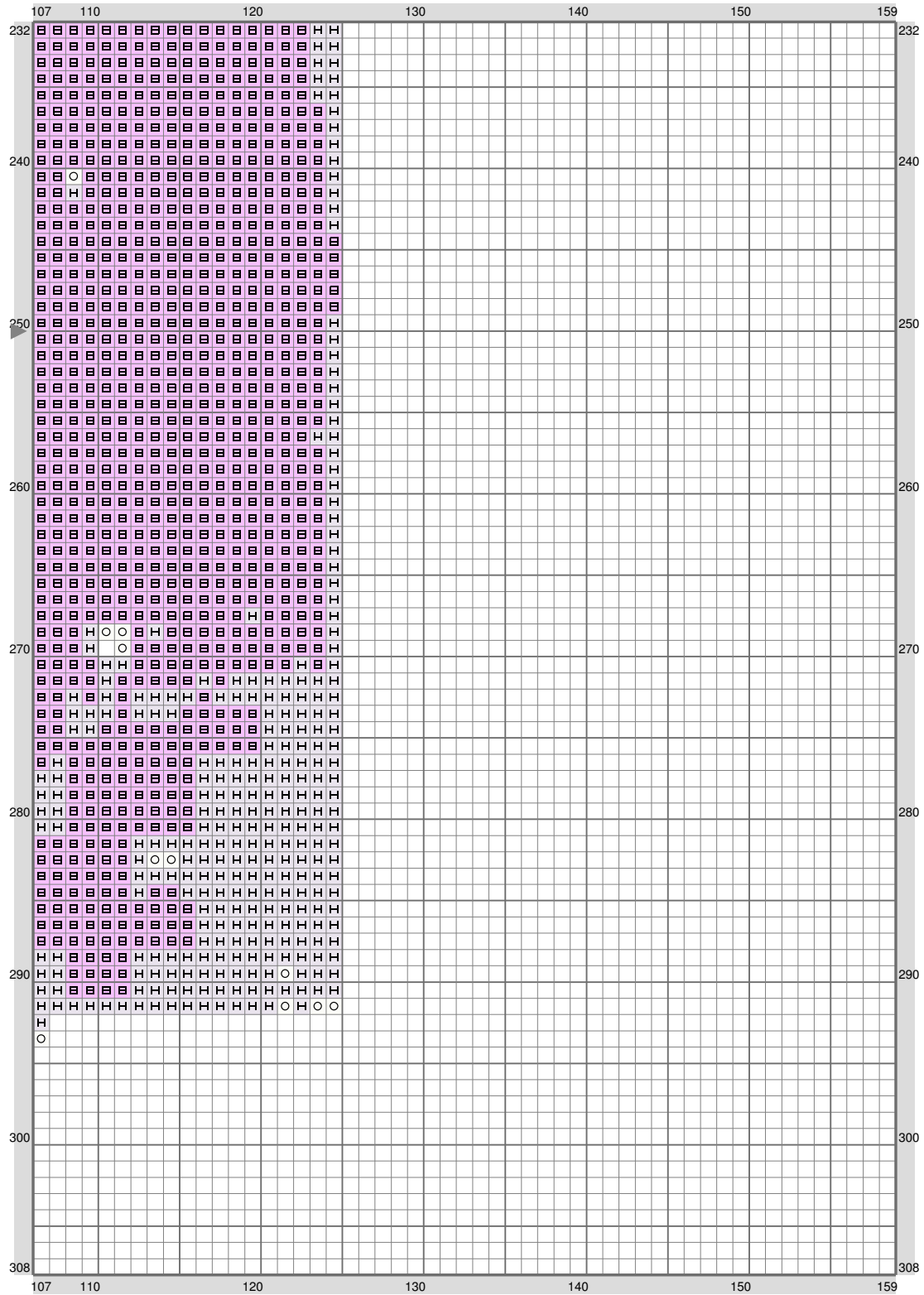
(This chart is printed using KG-Chart LE for Cross Stitch.)

ESM Part O



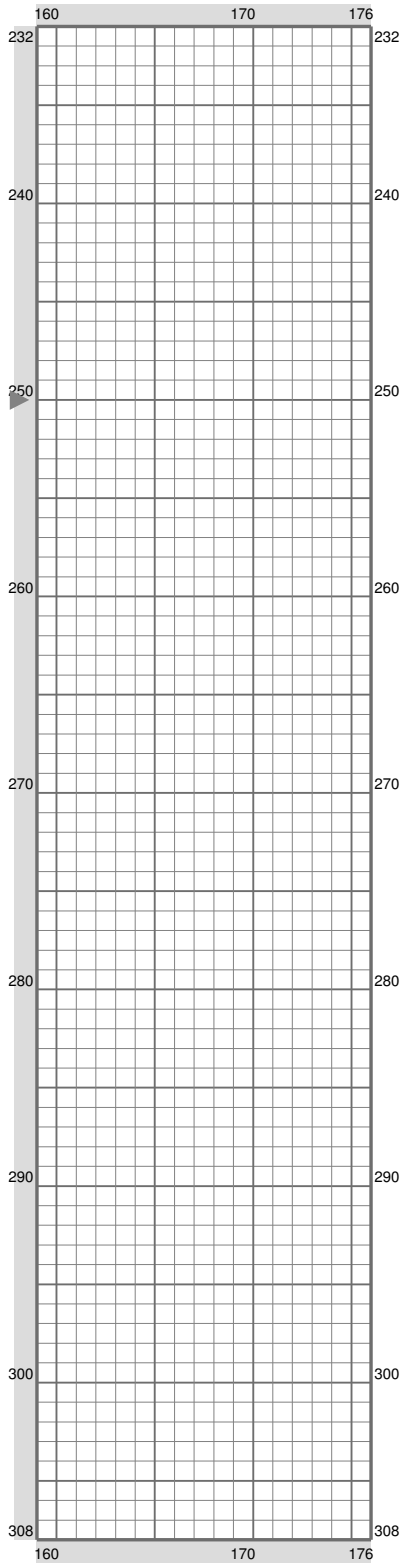
(This chart is printed using KG-Chart LE for Cross Stitch.)

ESM Part O



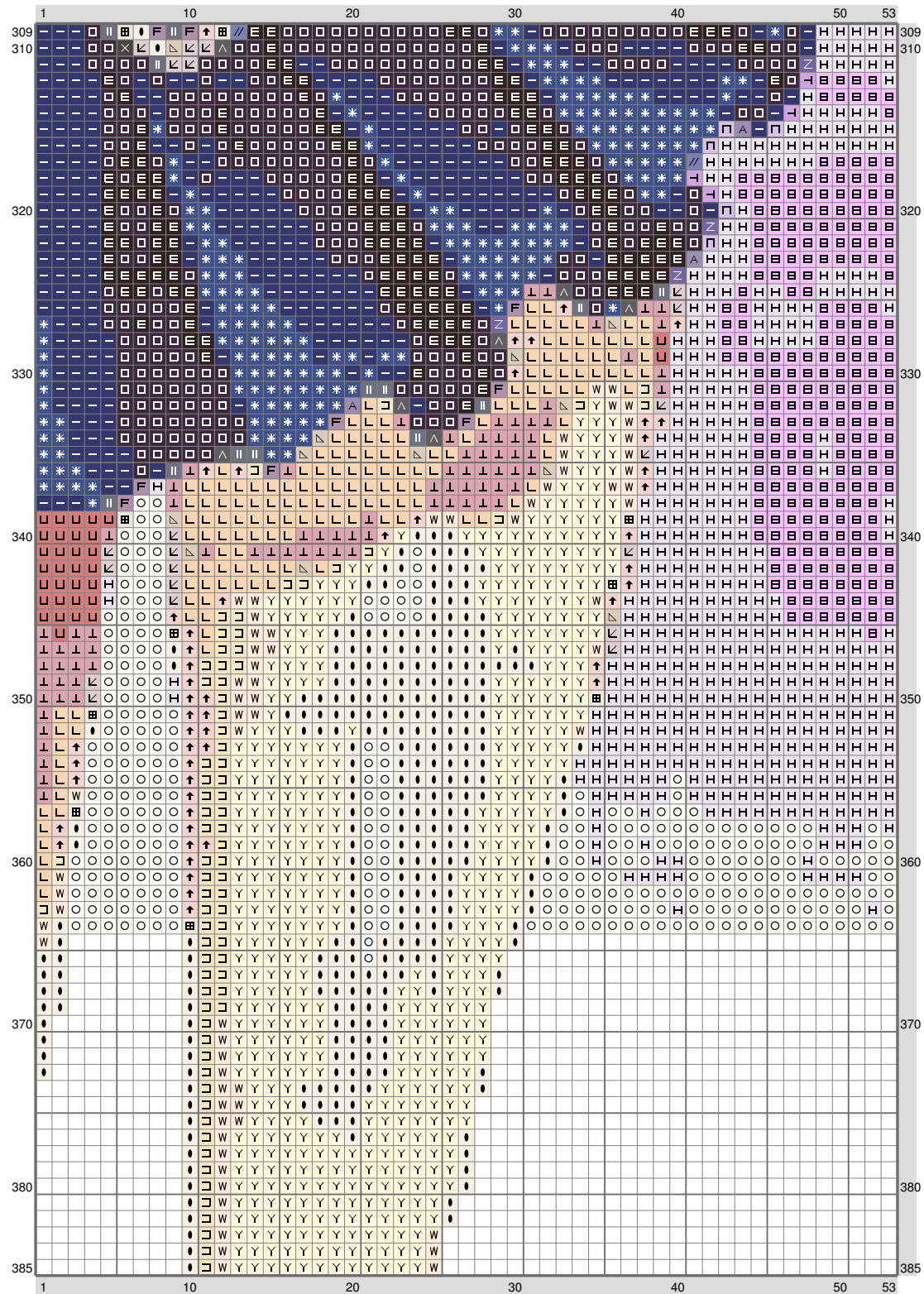
(This chart is printed using KG-Chart LE for Cross Stitch.)

ESM Part O

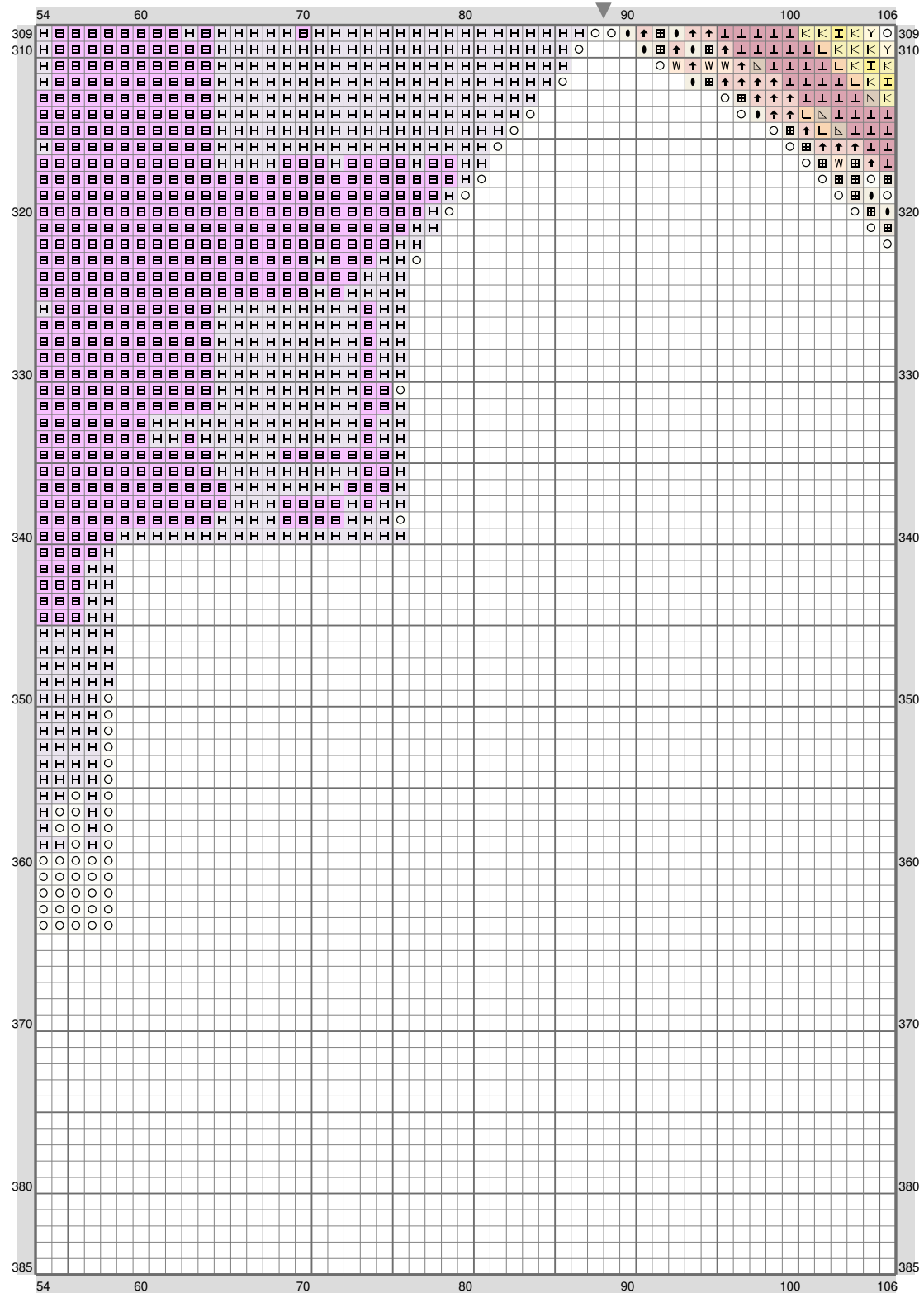


(This chart is printed using KG-Chart LE for Cross Stitch.)

ESM Part O

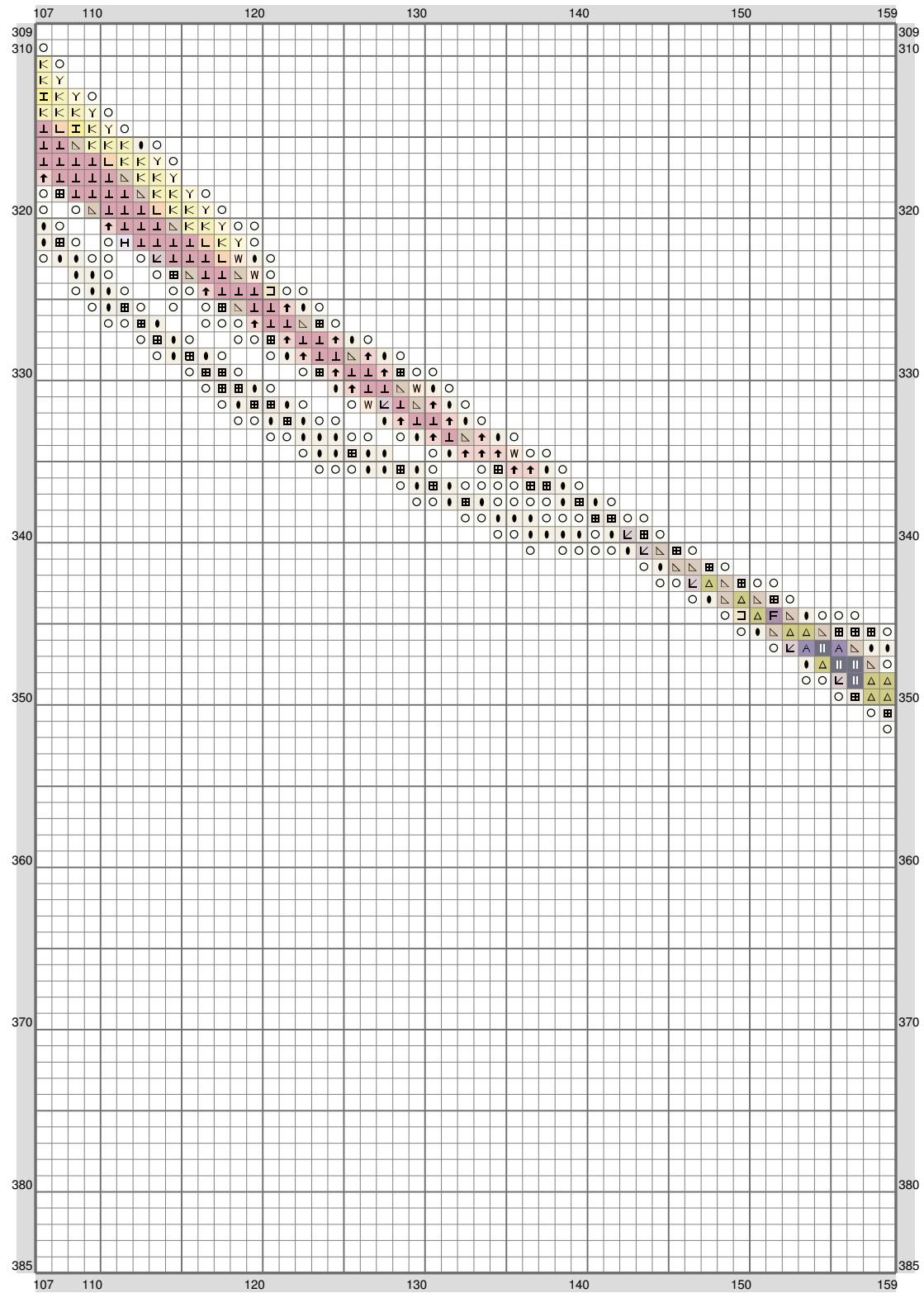


ESM Part O



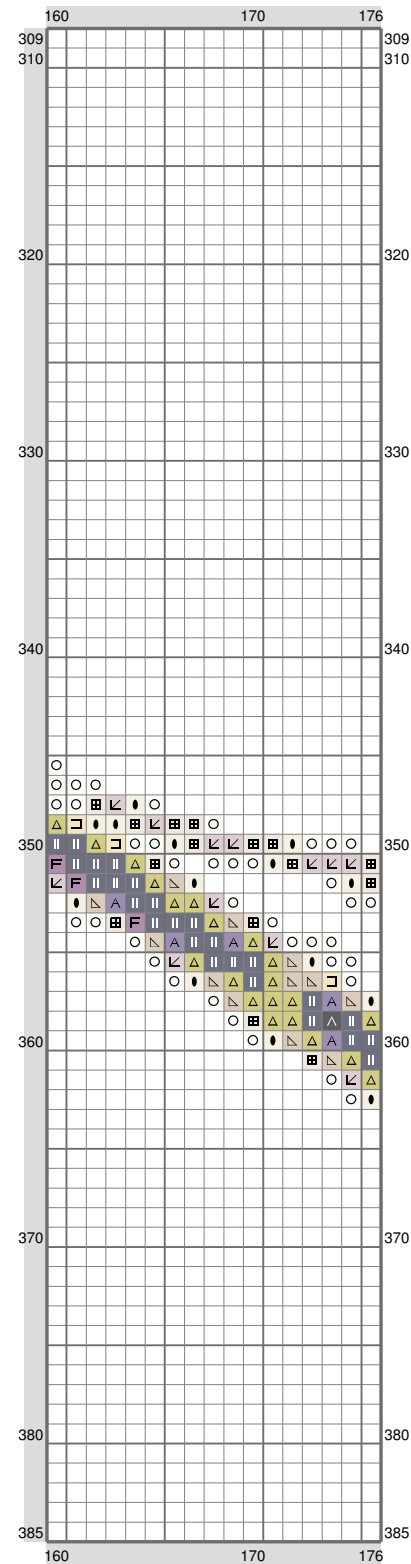
(This chart is printed using KG-Chart LE for Cross Stitch.)

ESM Part O



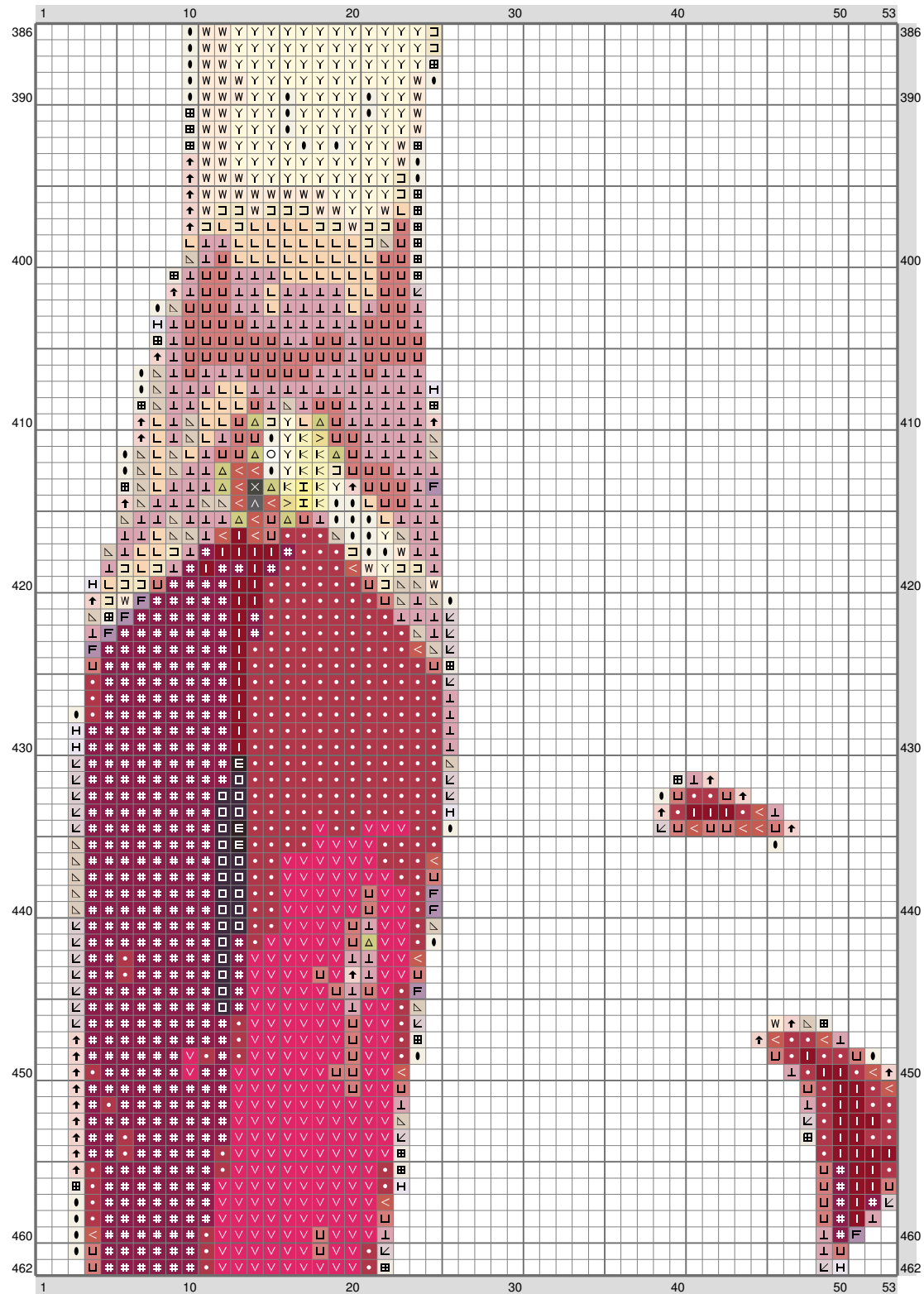
(This chart is printed using KG-Chart LE for Cross Stitch.)

ESM Part O



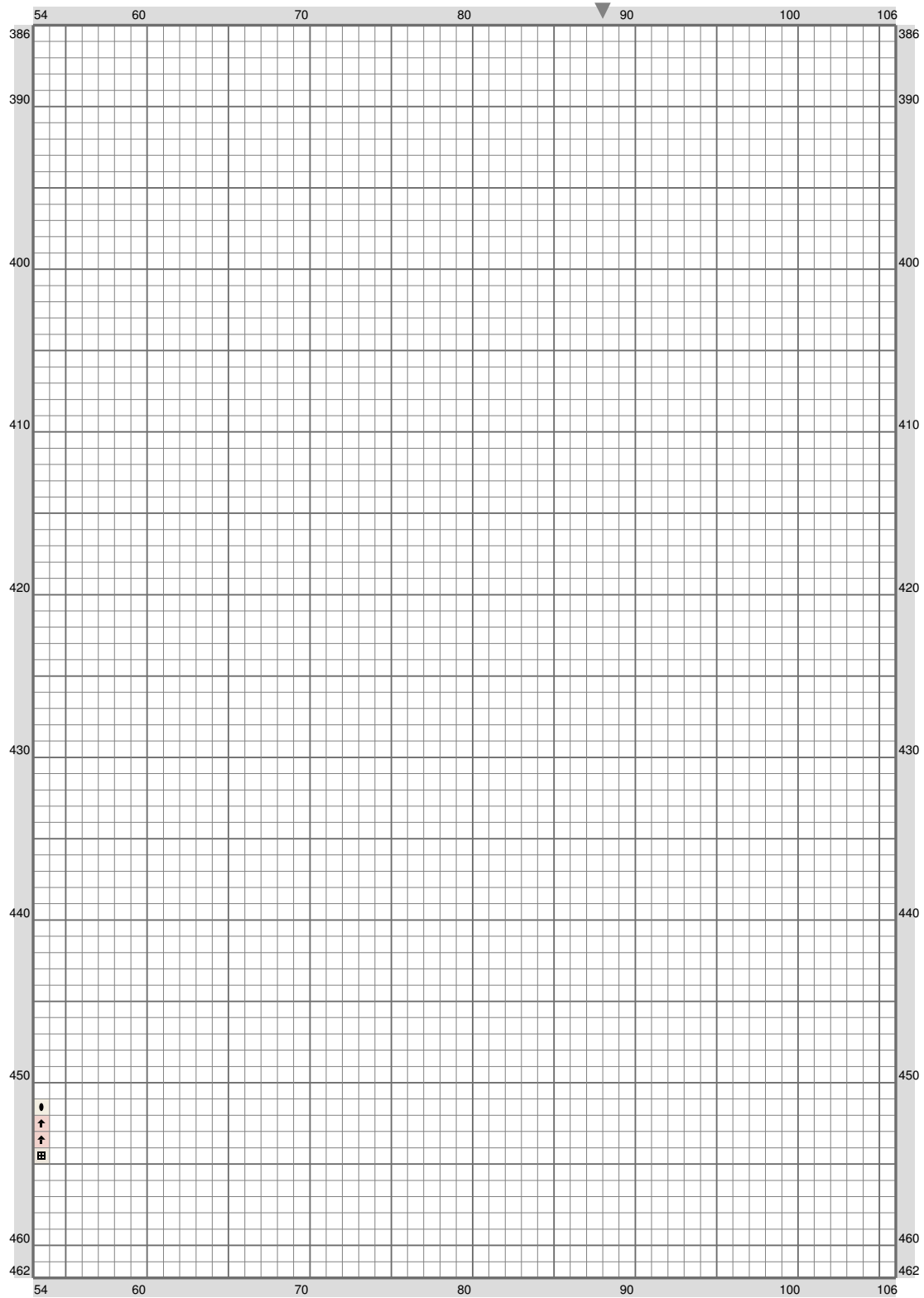
(This chart is printed using KG-Chart LE for Cross Stitch.)

ESM Part O



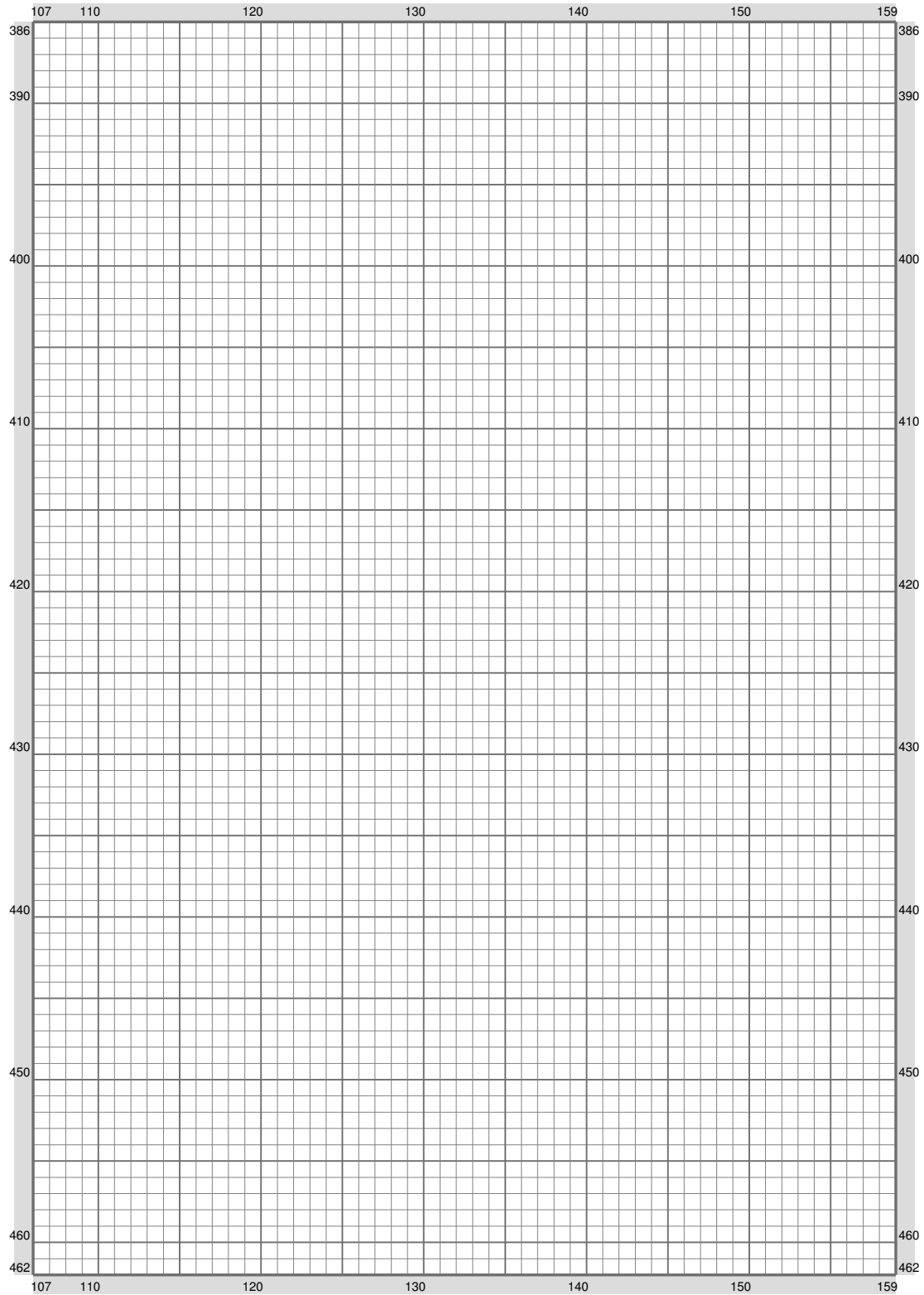
(This chart is printed using KG-Chart LE for Cross Stitch.)

ESM Part O



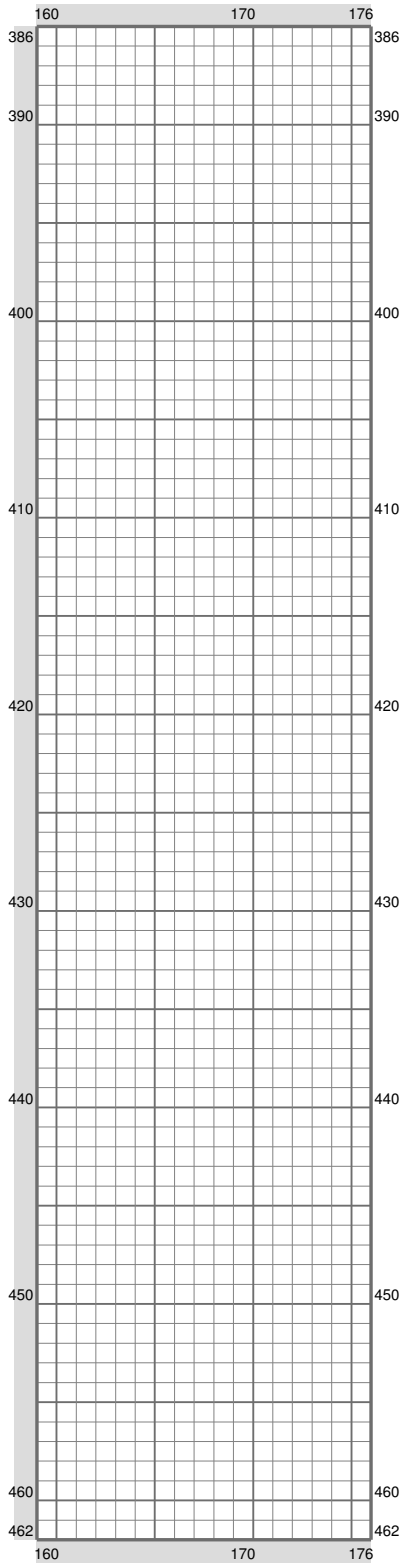
(This chart is printed using KG-Chart LE for Cross Stitch.)

ESM Part O



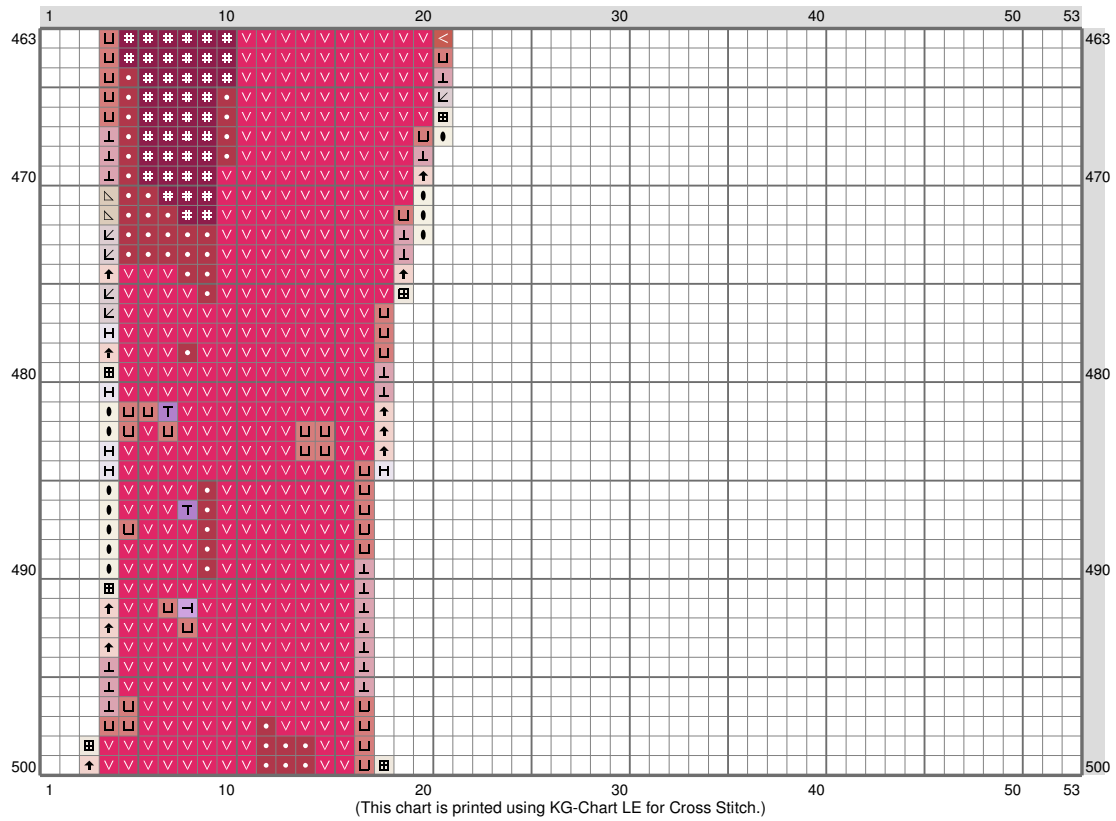
(This chart is printed using KG-Chart LE for Cross Stitch.)

ESM Part O

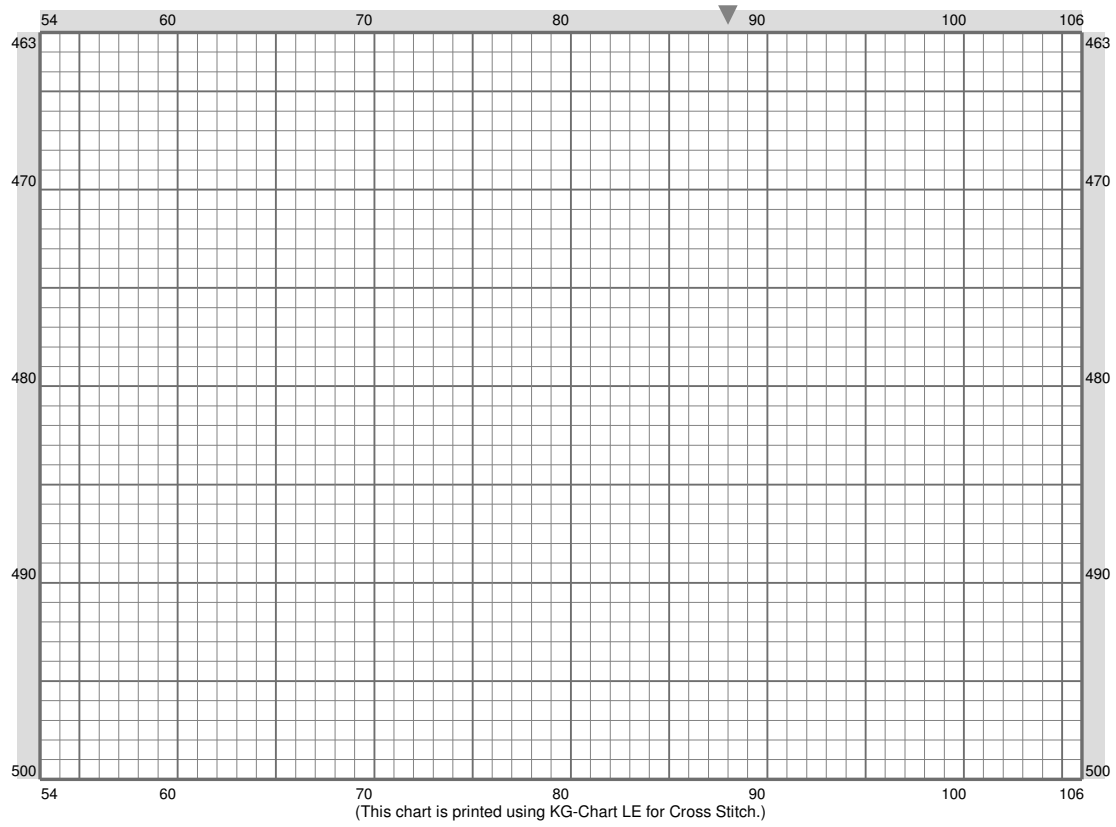


(This chart is printed using KG-Chart LE for Cross Stitch.)

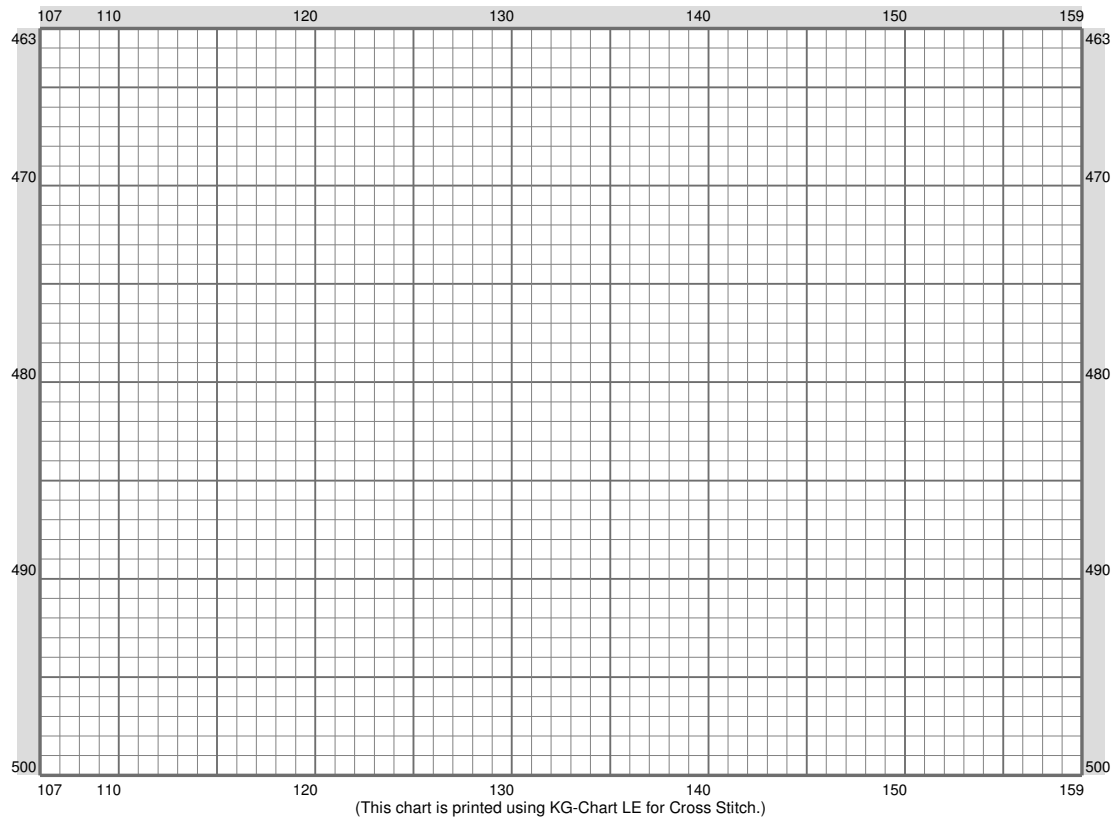
ESM Part O



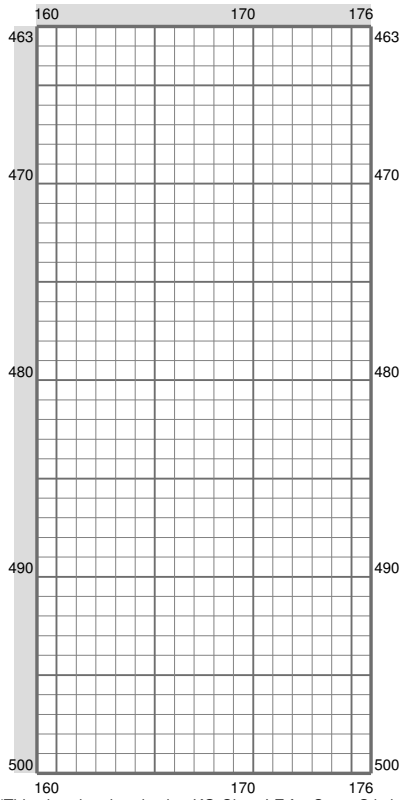
ESM Part O



ESM Part O



ESM Part O










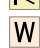





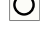



























(This chart is printed using KG-Chart LE for Cross Stitch.)

ESM Part O

Stitch Count: 176w x 500h
 Finished Size: 22.35 cm x 63.5 cm (20 ct./inch)
 Cloth: Aida
 Cloth's Color: White
 # of colors: 41 Colors

Color Table (DMC)

Cross Stitch

	310	(2065 ct)		153	(6345 ct)
	939	(3029 ct)		762	(2456 ct)
	823	(1180 ct)		727	(360 ct)
	311	(595 ct)		3078	(349 ct)
	3021	(1158 ct)		3770	(337 ct)
	824	(400 ct)		3823	(808 ct)
	816	(503 ct)		ECRU	(779 ct)
	3685	(526 ct)		BLANC	(1091 ct)
	355	(671 ct)			
	601	(645 ct)			
	535	(701 ct)			
	317	(498 ct)			
	919	(473 ct)			
	356	(410 ct)			
	158	(380 ct)			
	3807	(1633 ct)			
	3746	(723 ct)			
	793	(2654 ct)			
	414	(4370 ct)			
	341	(1807 ct)			
	3042	(691 ct)			
	155	(2479 ct)			
	778	(769 ct)			
	210	(6770 ct)			
	211	(4575 ct)			
	3819	(262 ct)			
	165	(119 ct)			
	613	(555 ct)			
	738	(545 ct)			
	453	(344 ct)			
	842	(489 ct)			
	745	(594 ct)			
	822	(420 ct)			