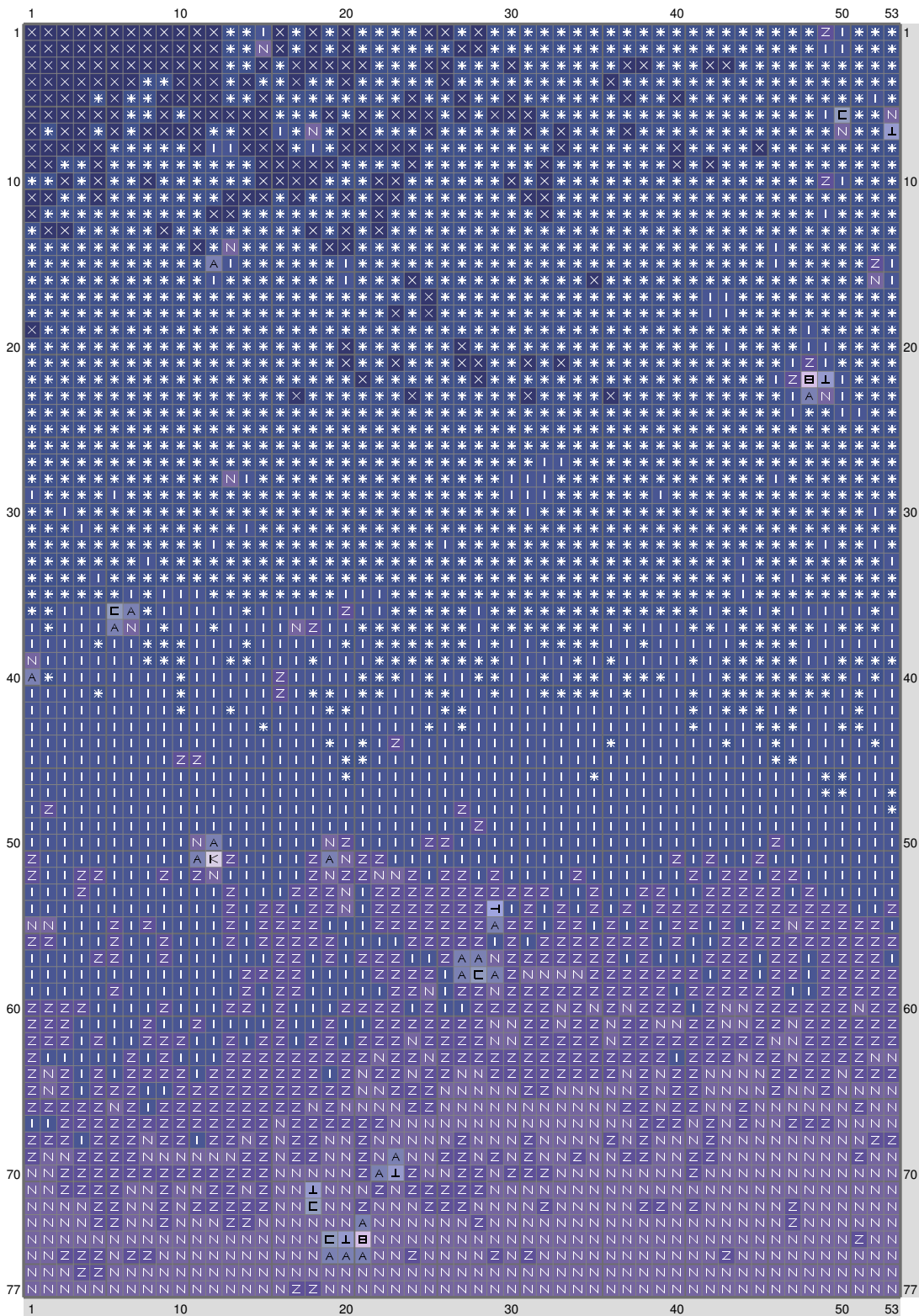


ESM Part N

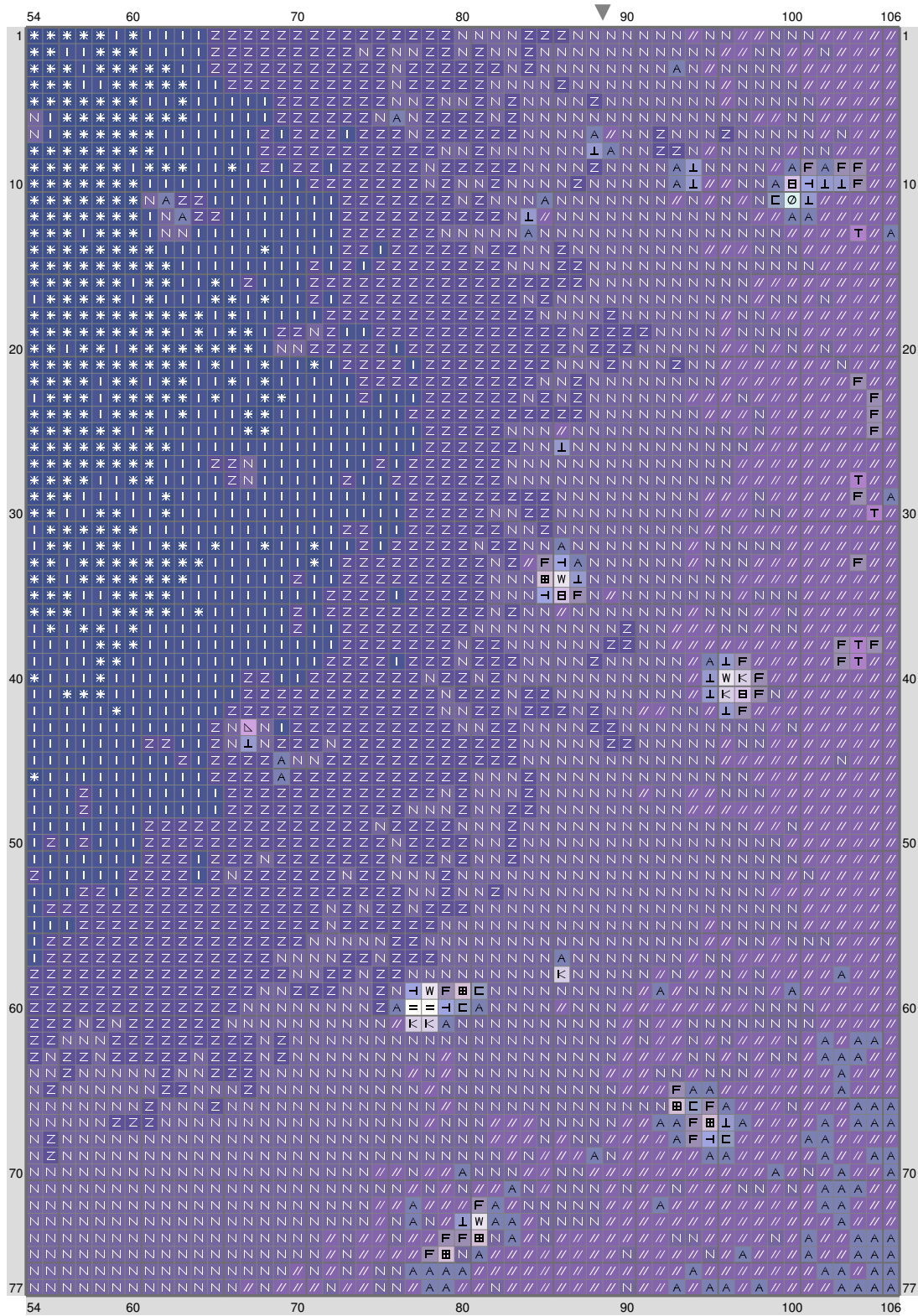


ESM Part N



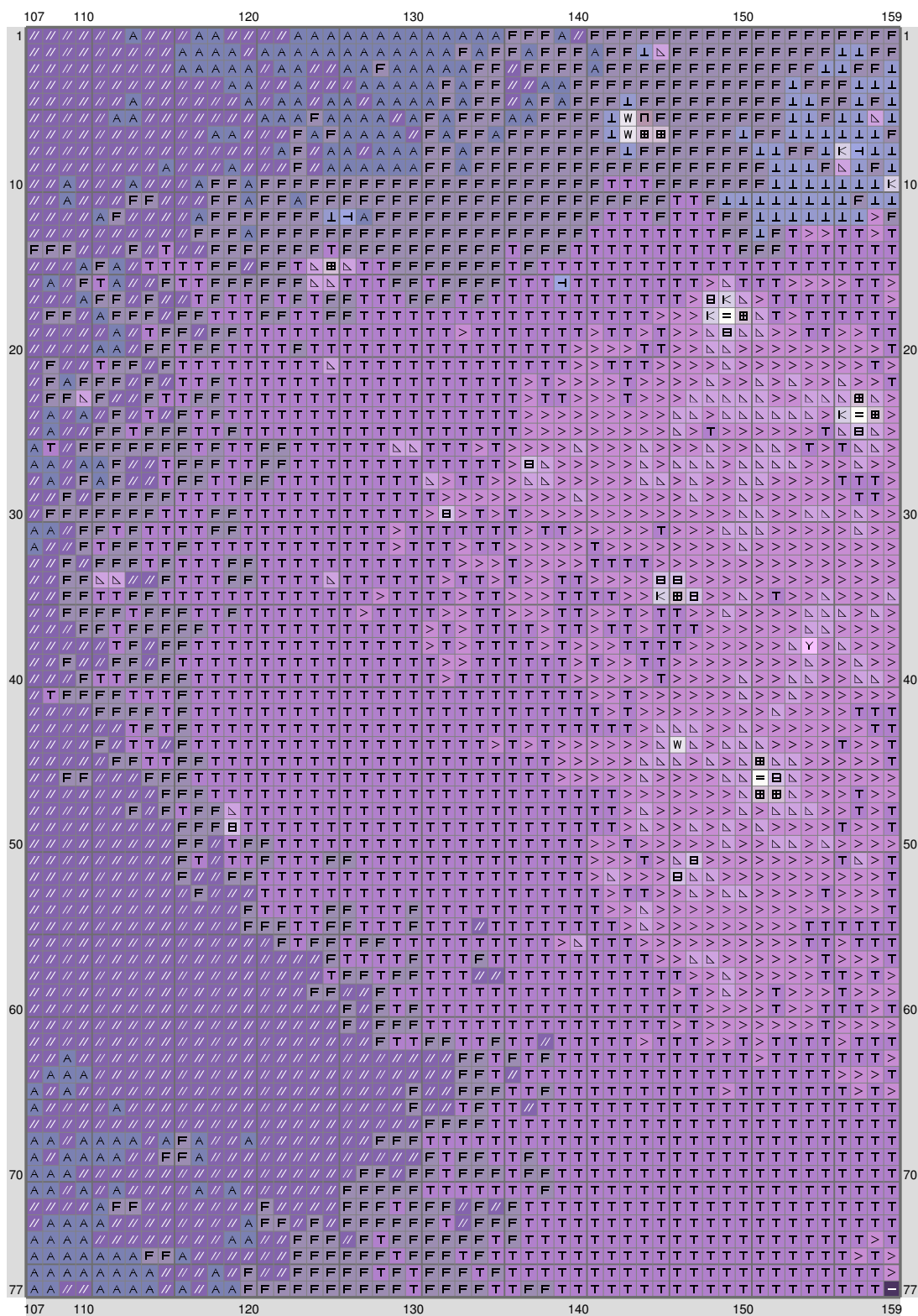
(This chart is printed using KG-Chart LE for Cross Stitch.)

ESM Part N



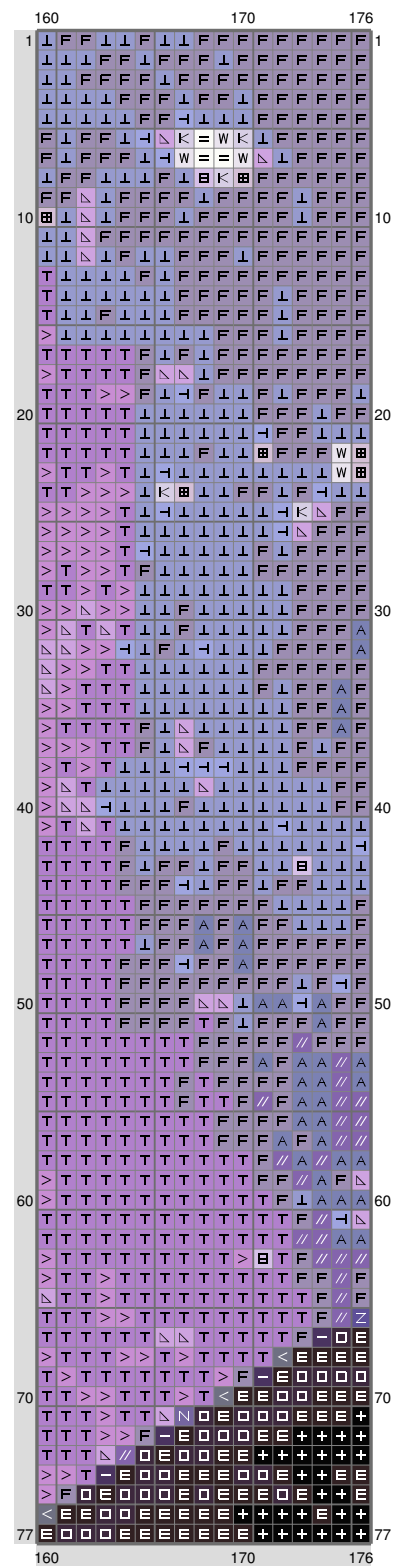
(This chart is printed using KG-Chart LE for Cross Stitch.)

ESM Part N



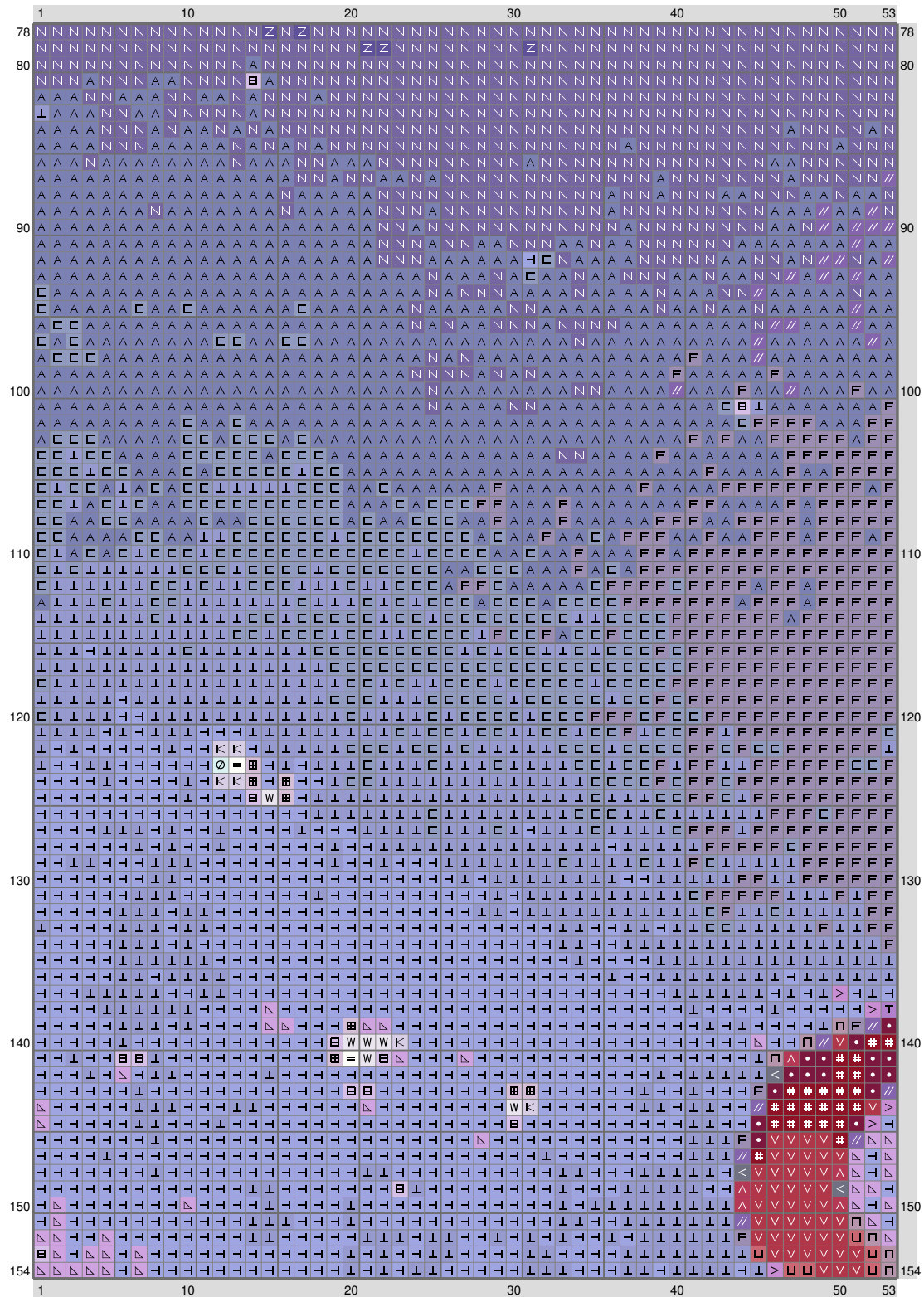
(This chart is printed using KG-Chart LE for Cross Stitch.)

ESM Part N



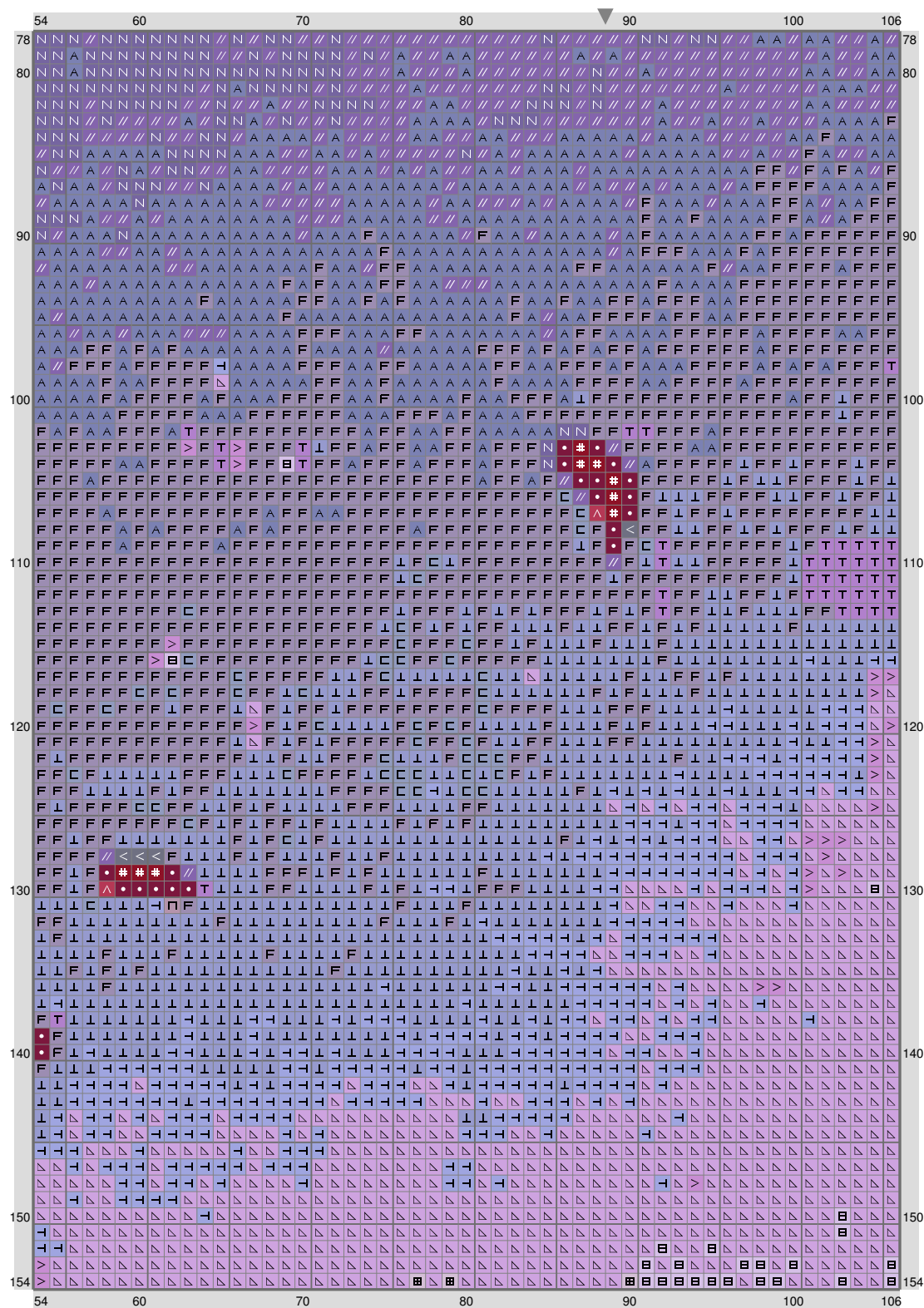
(This chart is printed using KG-Chart LE for Cross Stitch.)

ESM Part N



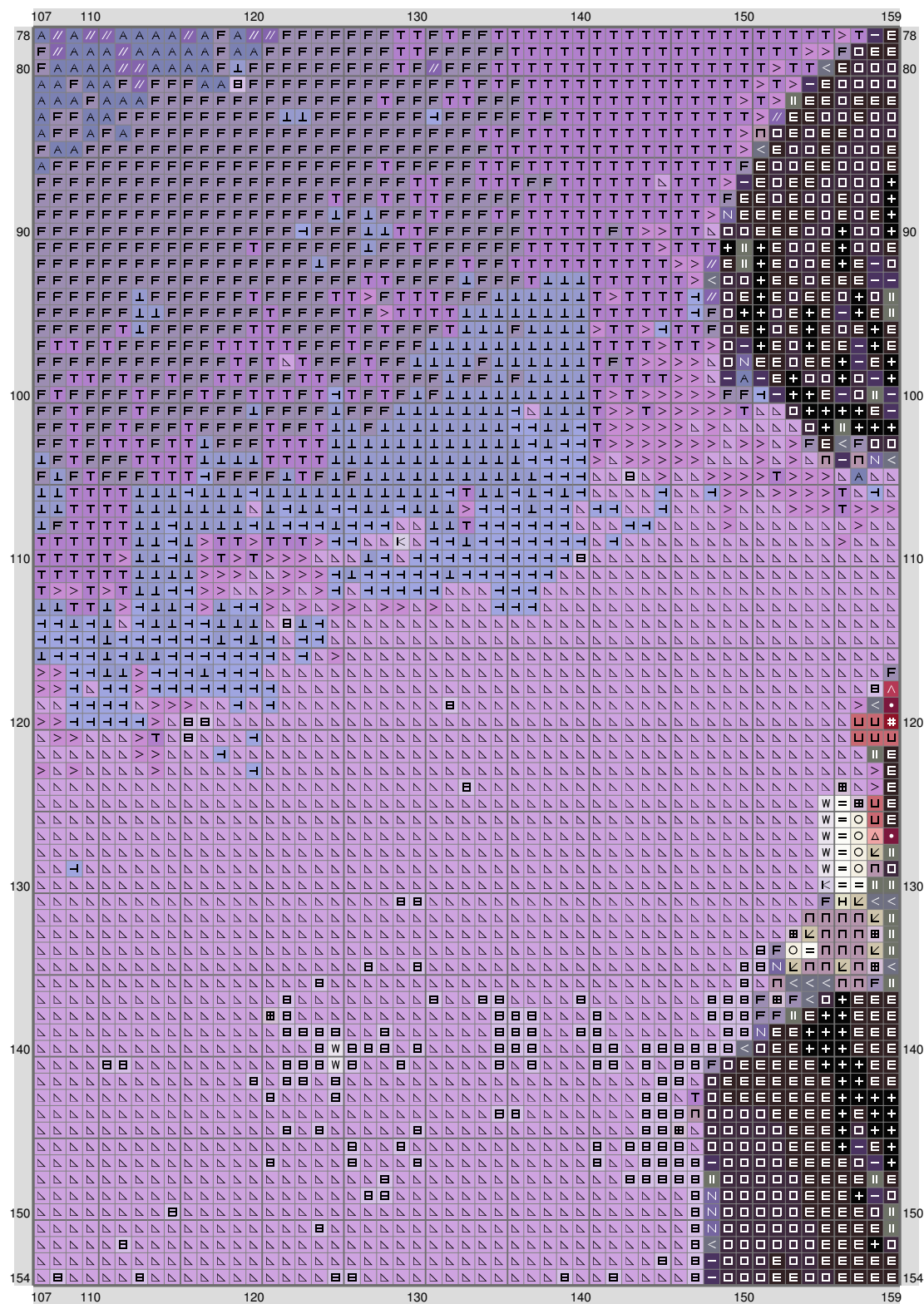
(This chart is printed using KG-Chart LE for Cross Stitch.)

ESM Part N



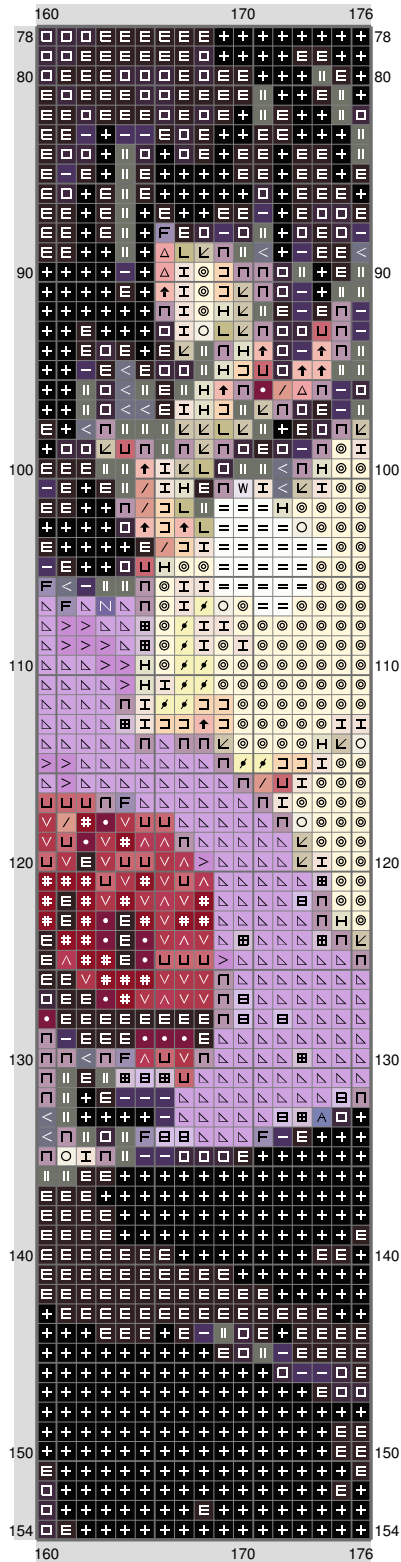
(This chart is printed using KG-Chart LE for Cross Stitch.)

ESM Part N



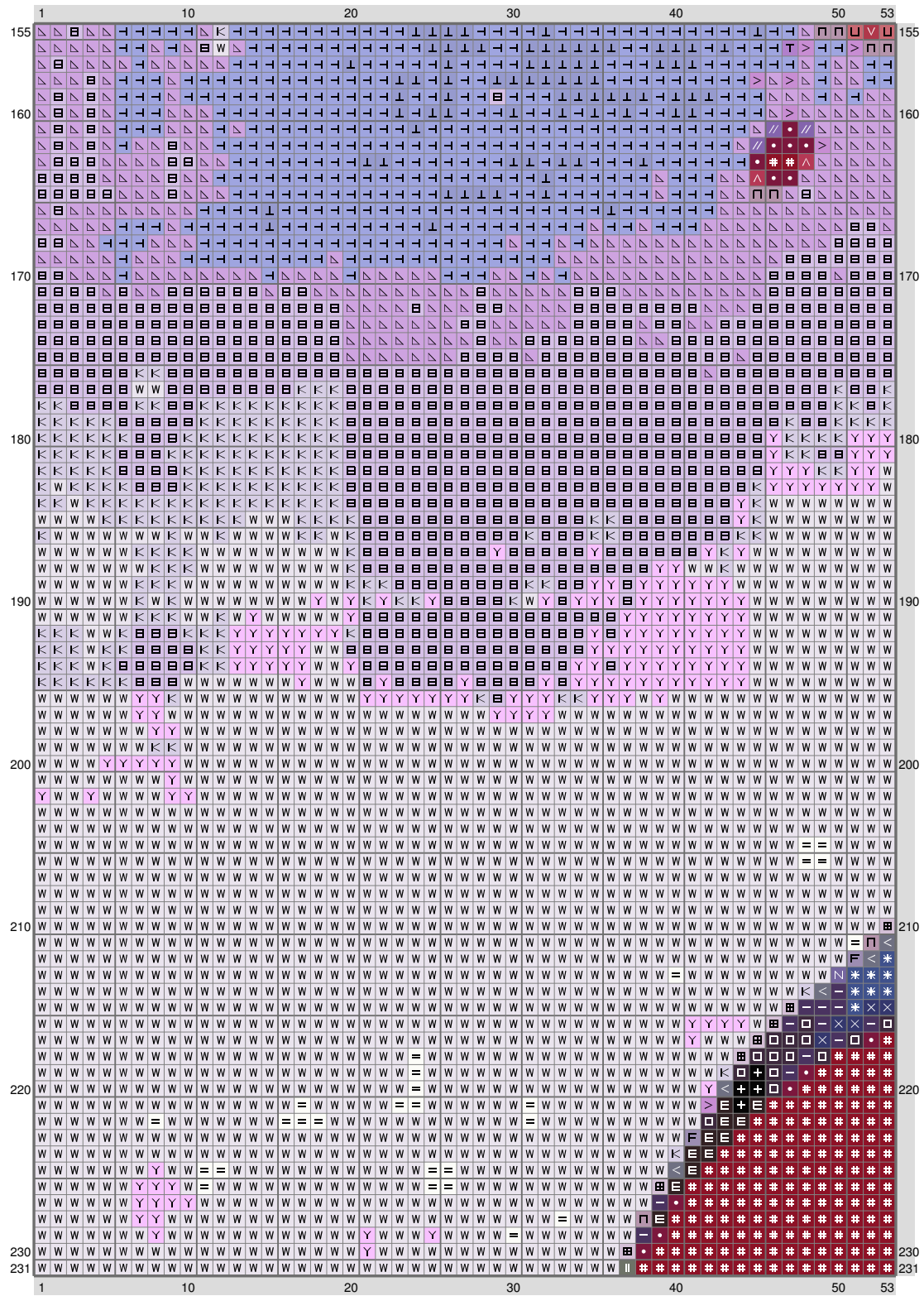
(This chart is printed using KG-Chart LE for Cross Stitch.)

ESM Part N



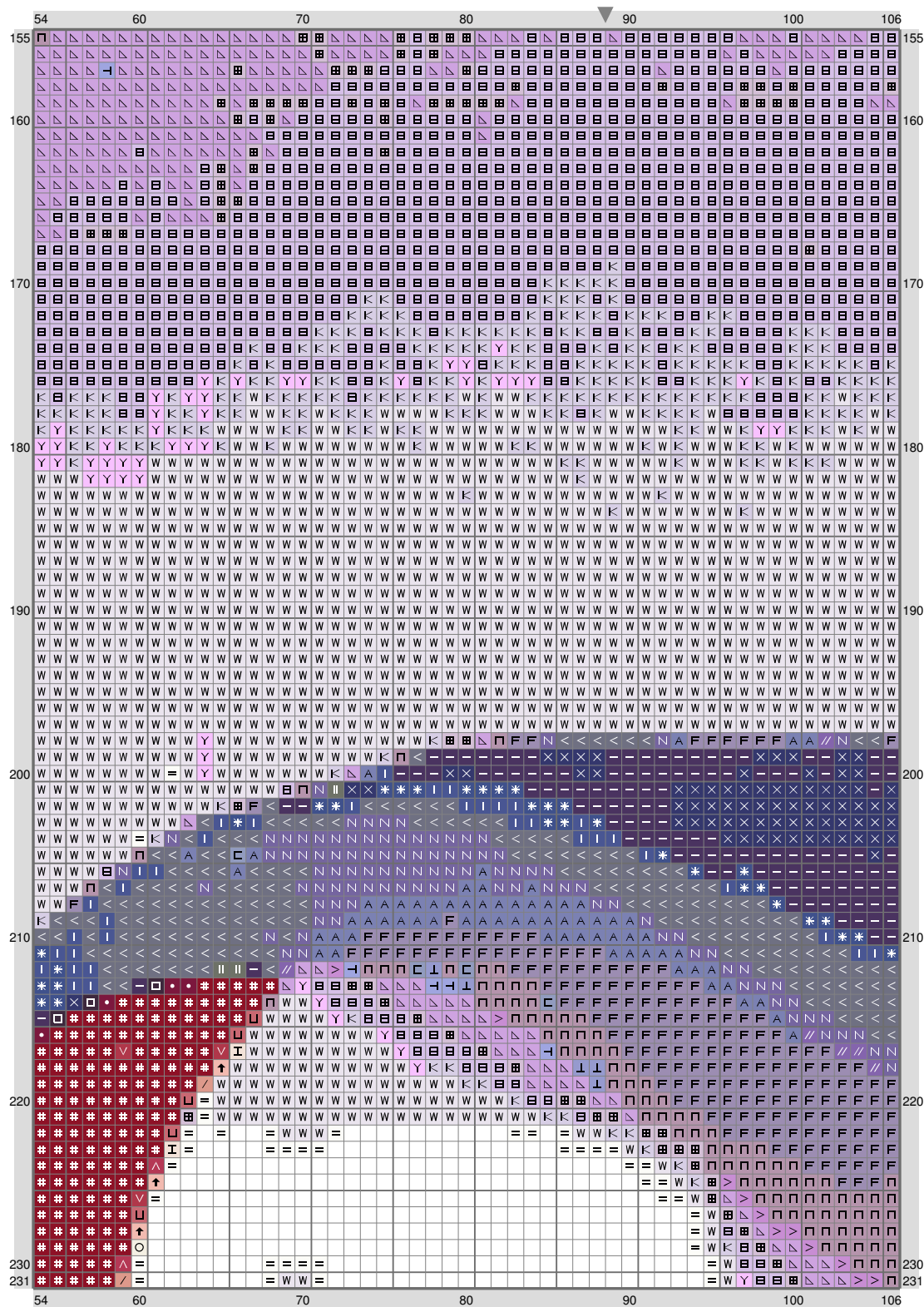
(This chart is printed using KG-Chart LE for Cross Stitch.)

ESM Part N



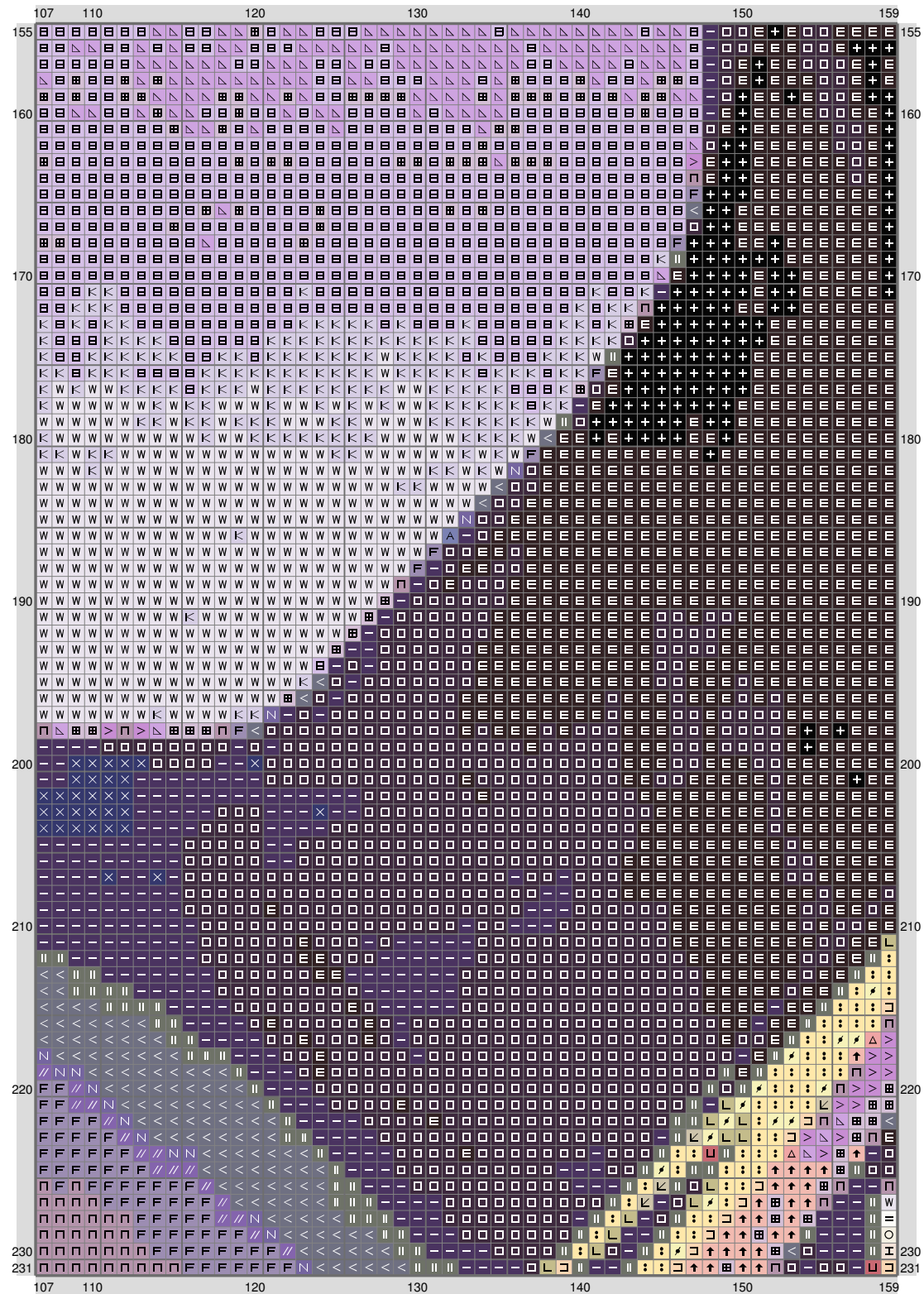
(This chart is printed using KG-Chart LE for Cross Stitch.)

ESM Part N



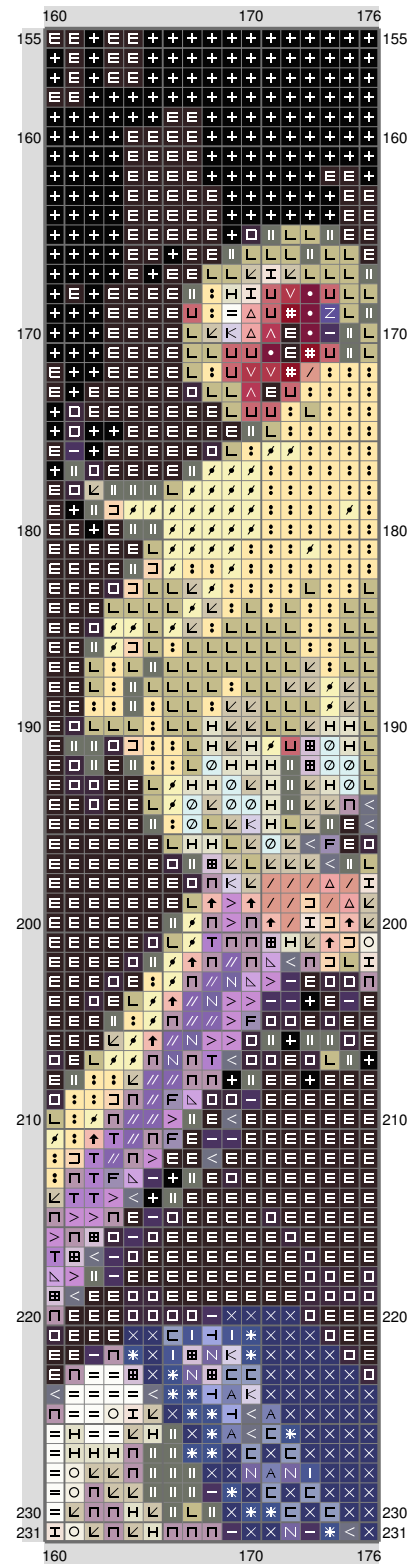
(This chart is printed using KG-Chart LE for Cross Stitch.)

ESM Part N



(This chart is printed using KG-Chart LE for Cross Stitch.)

ESM Part N

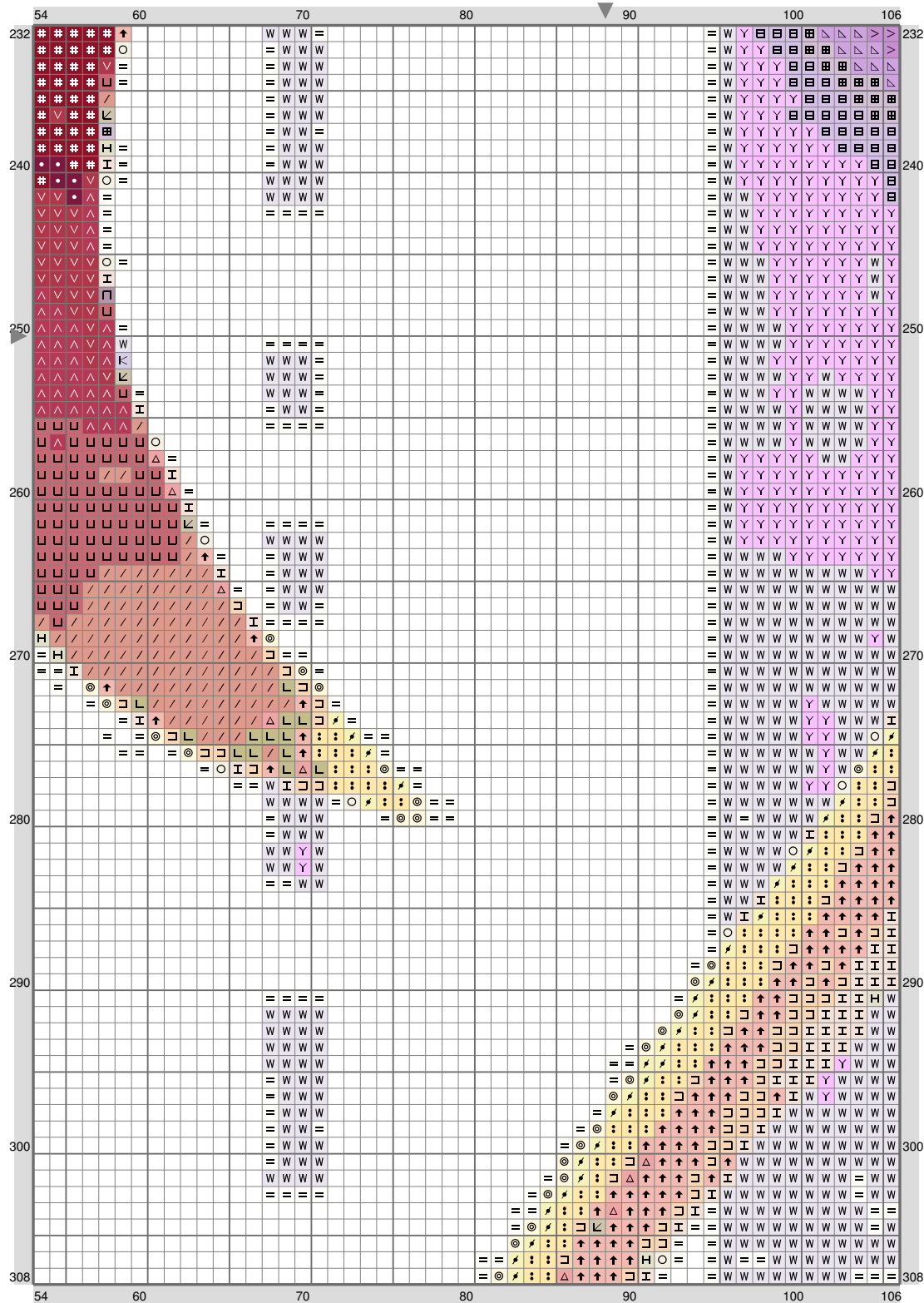


(This chart is printed using KG-Chart LE for Cross Stitch.)

ESM Part N

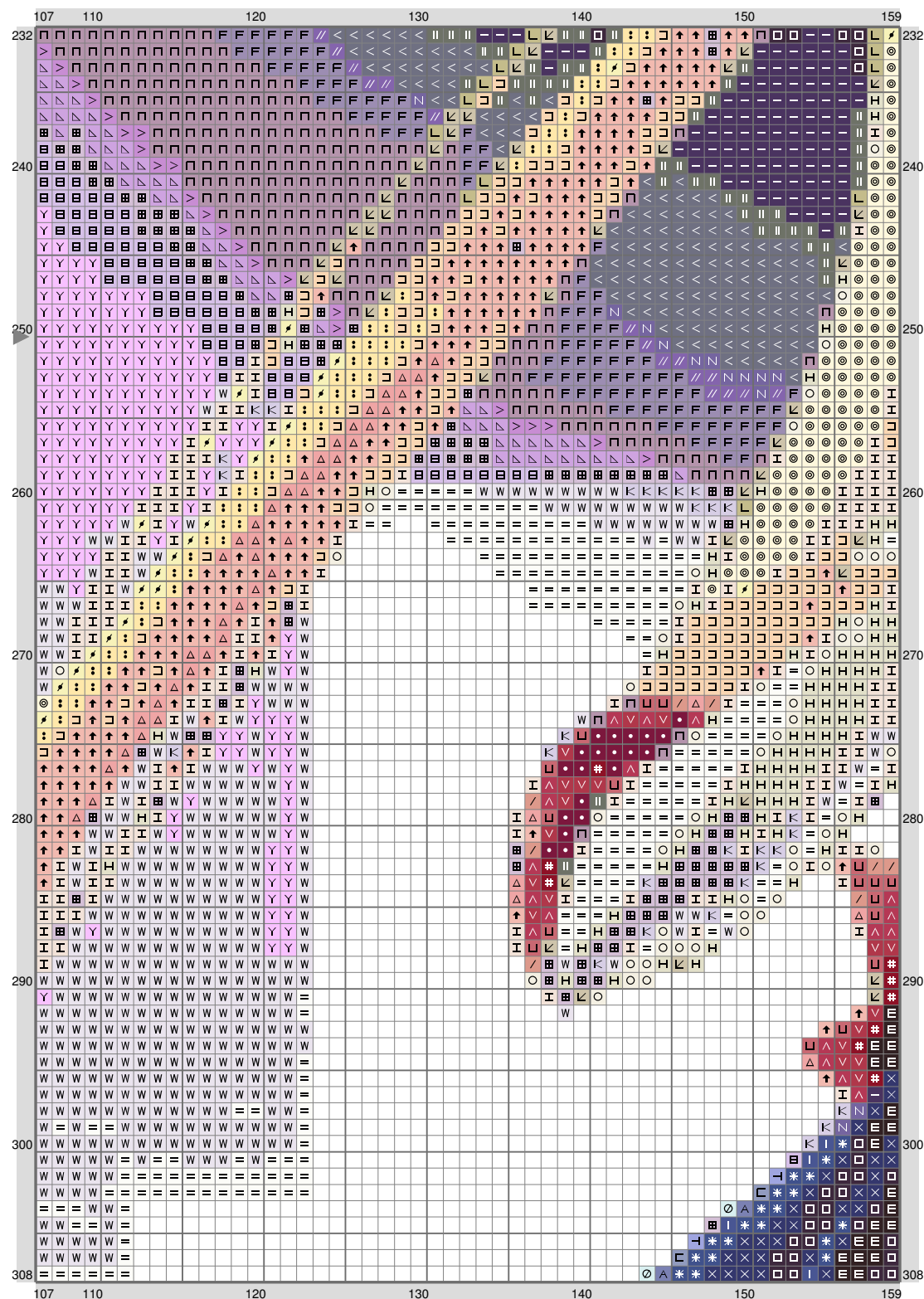


ESM Part N

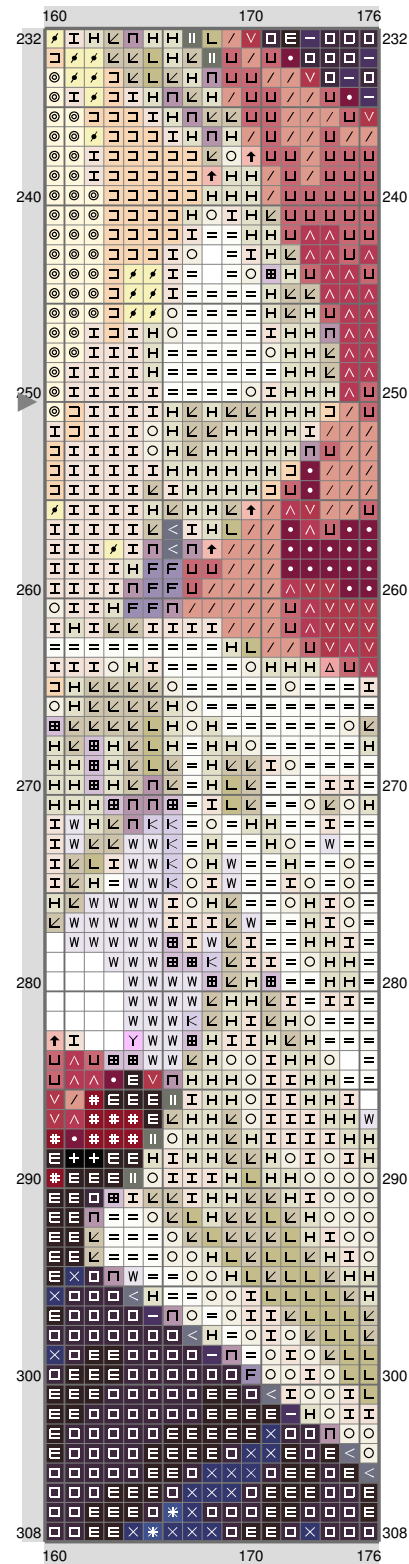


(This chart is printed using KG-Chart LE for Cross Stitch.)

ESM Part N

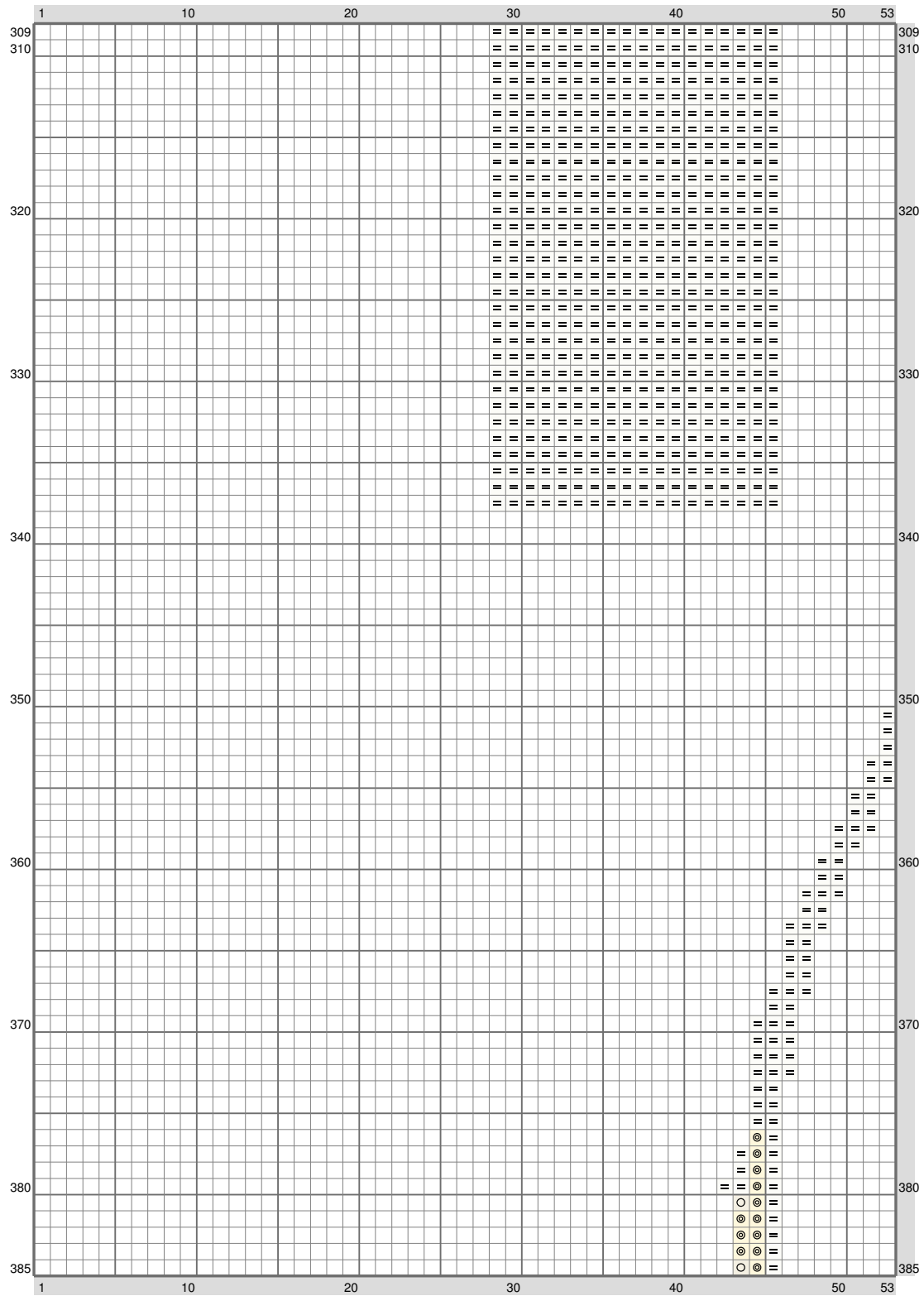


ESM Part N



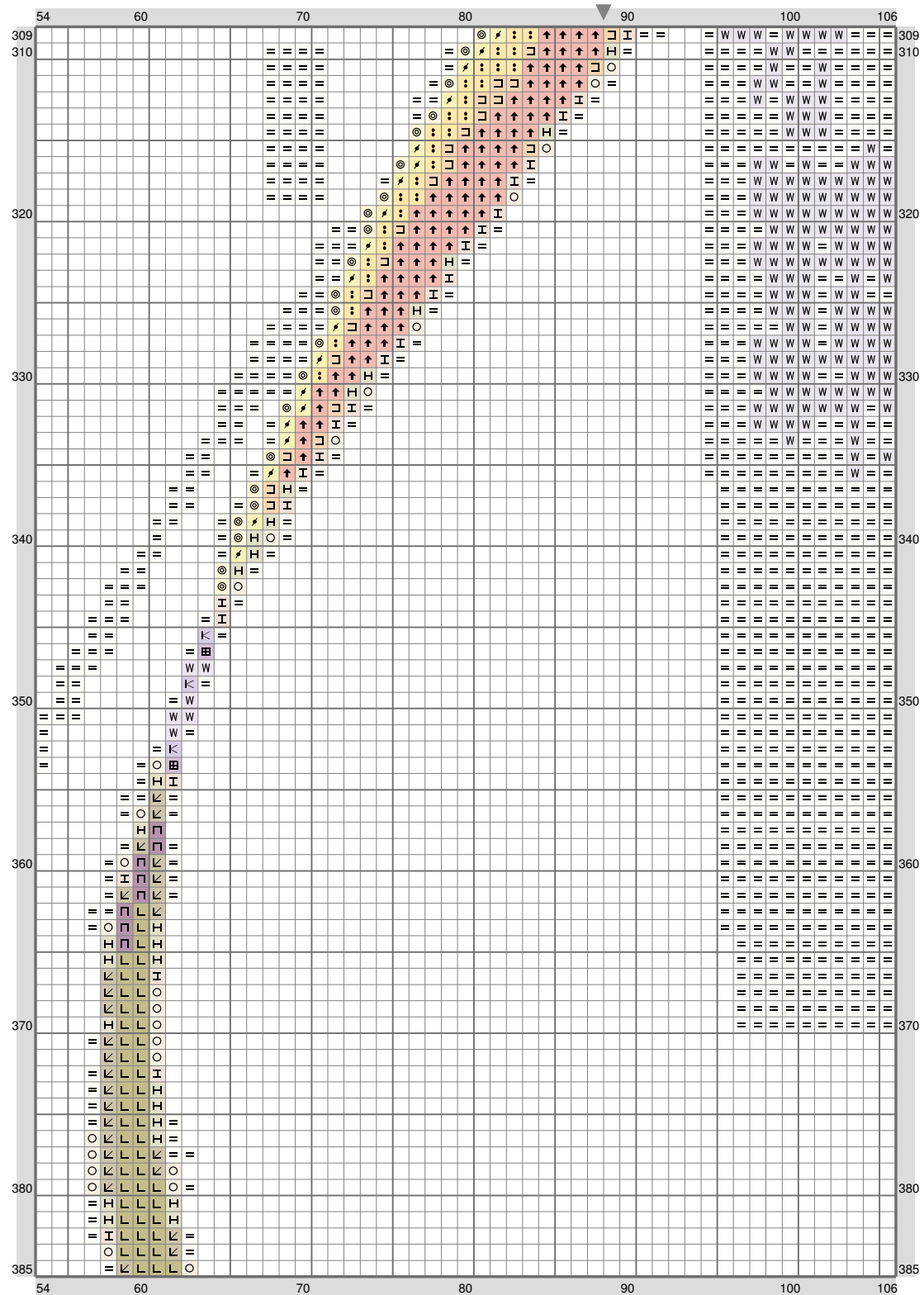
(This chart is printed using KG-Chart LE for Cross Stitch.)

ESM Part N



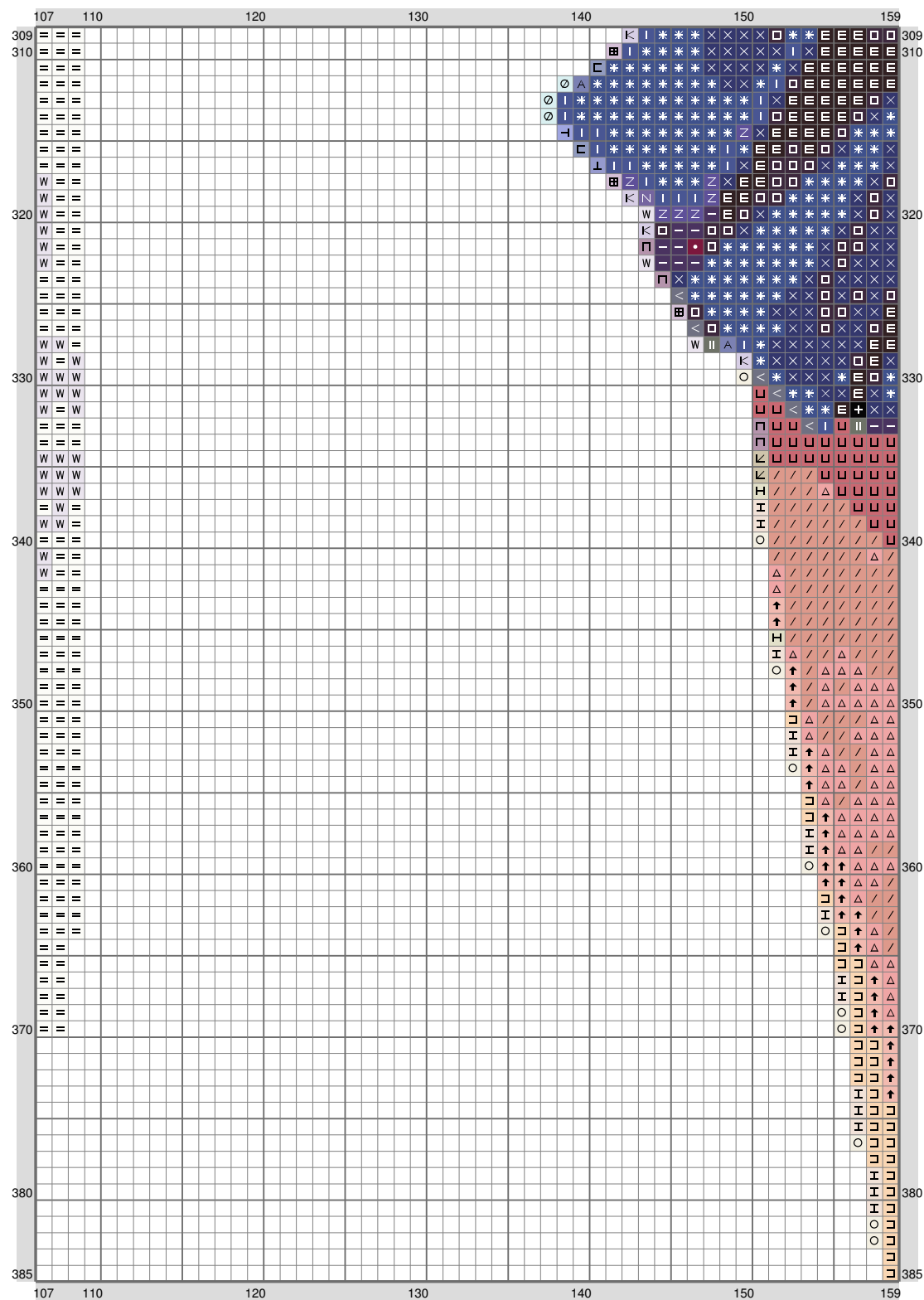
(This chart is printed using KG-Chart LE for Cross Stitch.)

ESM Part N



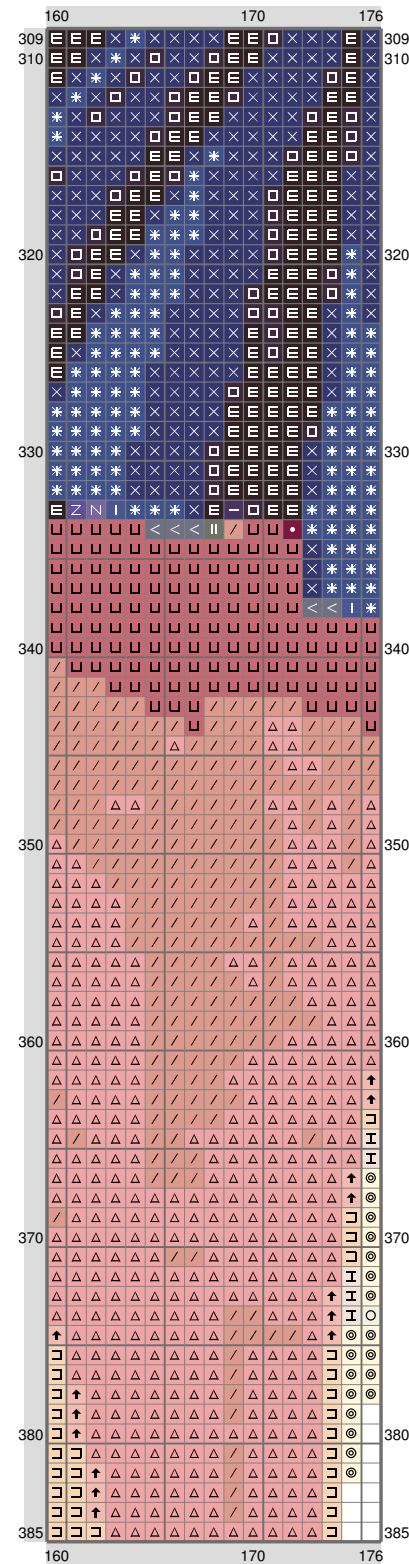
(This chart is printed using KG-Chart LE for Cross Stitch.)

ESM Part N



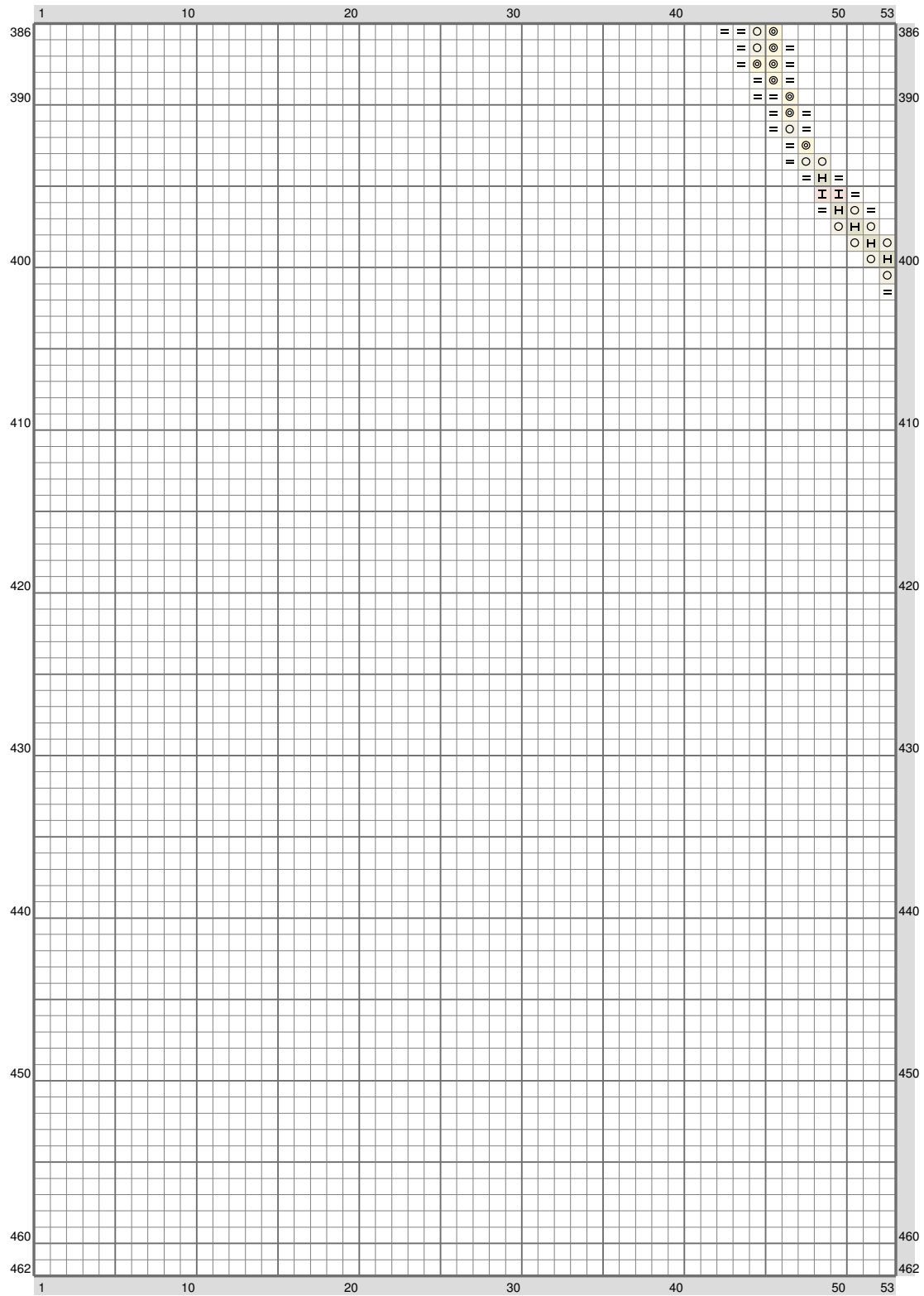
(This chart is printed using KG-Chart LE for Cross Stitch.)

ESM Part N



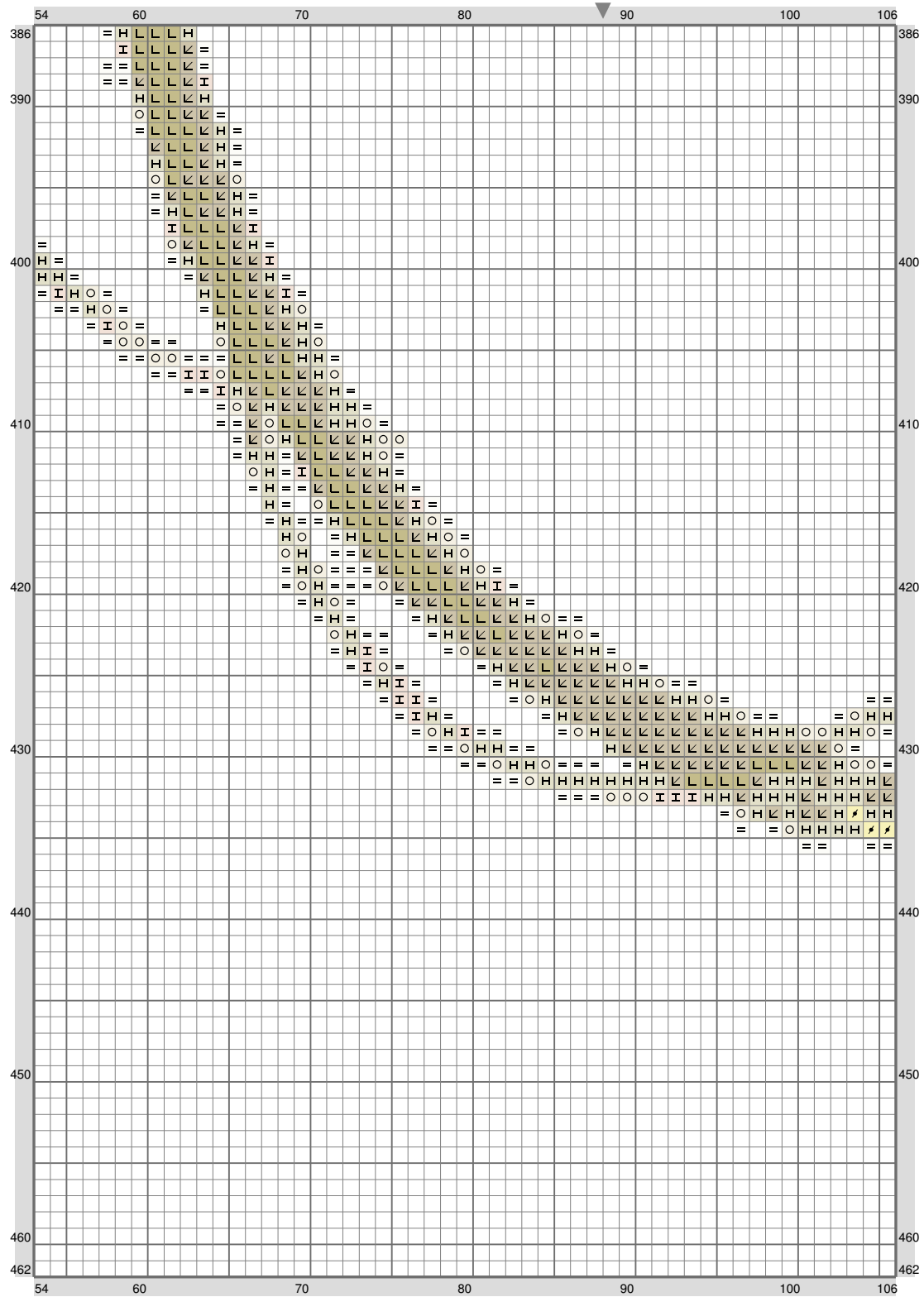
(This chart is printed using KG-Chart LE for Cross Stitch.)

ESM Part N



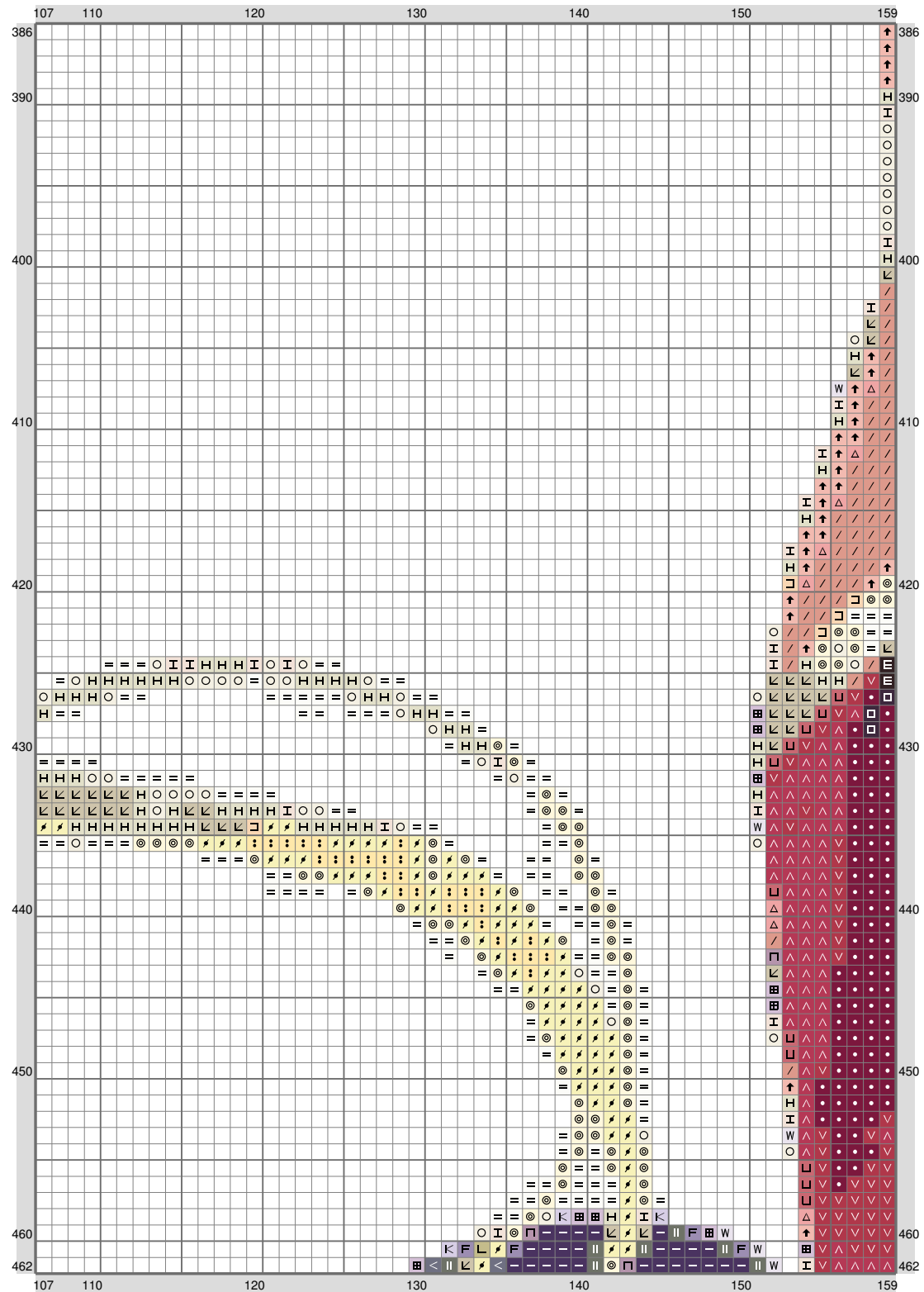
(This chart is printed using KG-Chart LE for Cross Stitch.)

ESM Part N



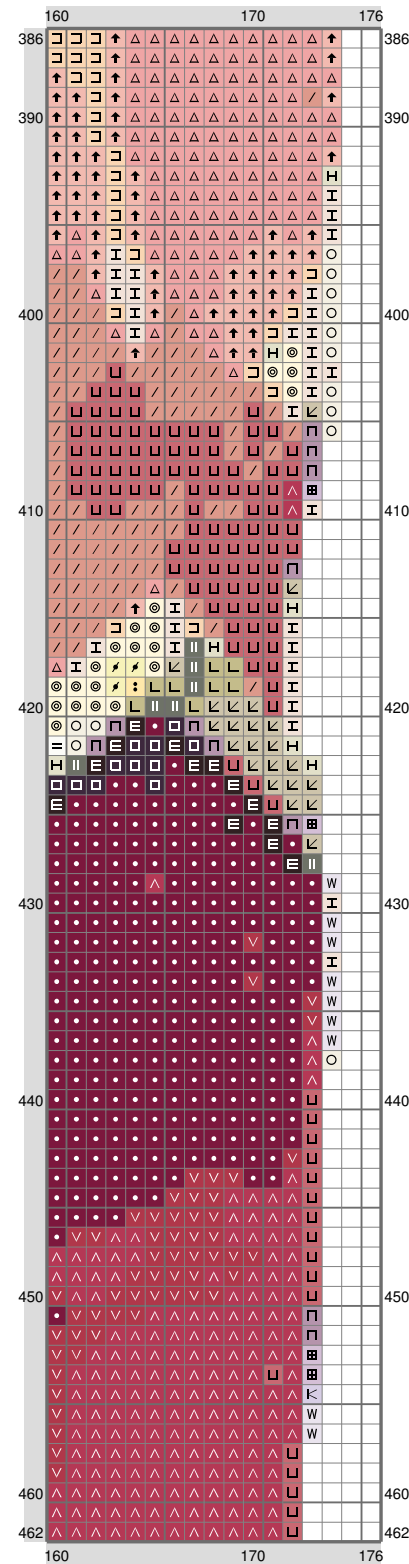
(This chart is printed using KG-Chart LE for Cross Stitch.)

ESM Part N



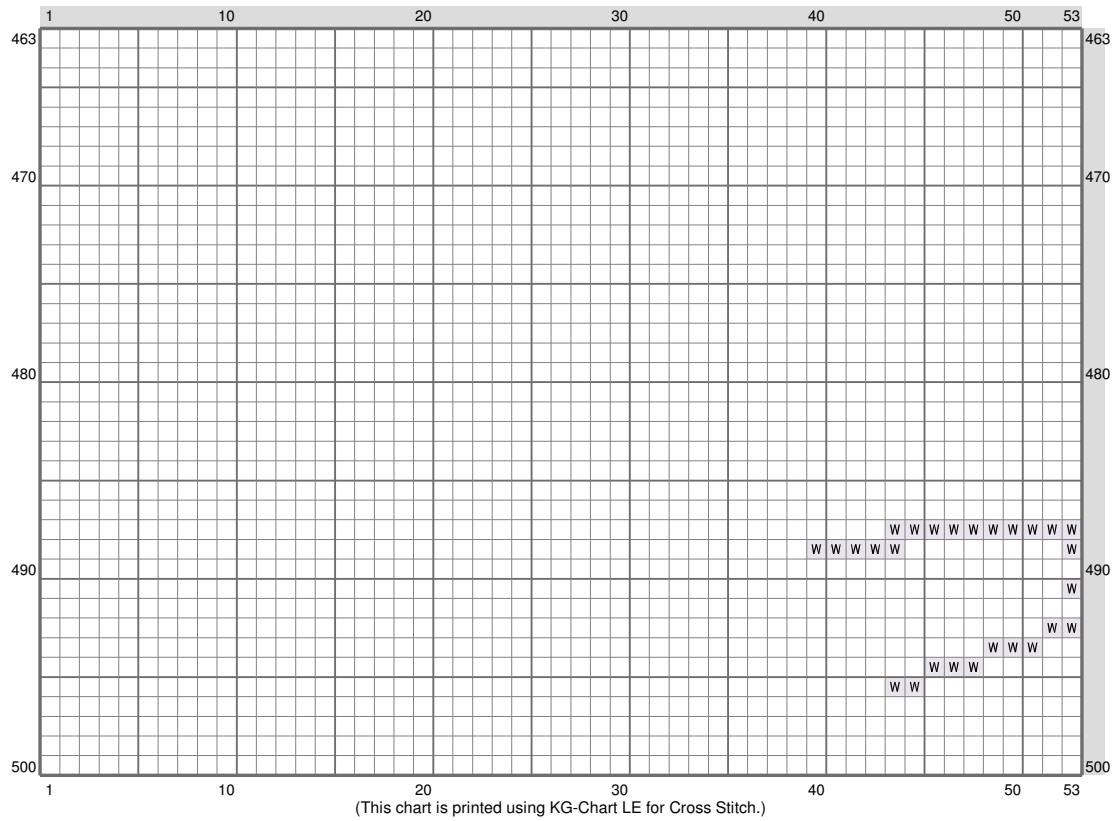
(This chart is printed using KG-Chart LE for Cross Stitch.)

ESM Part N

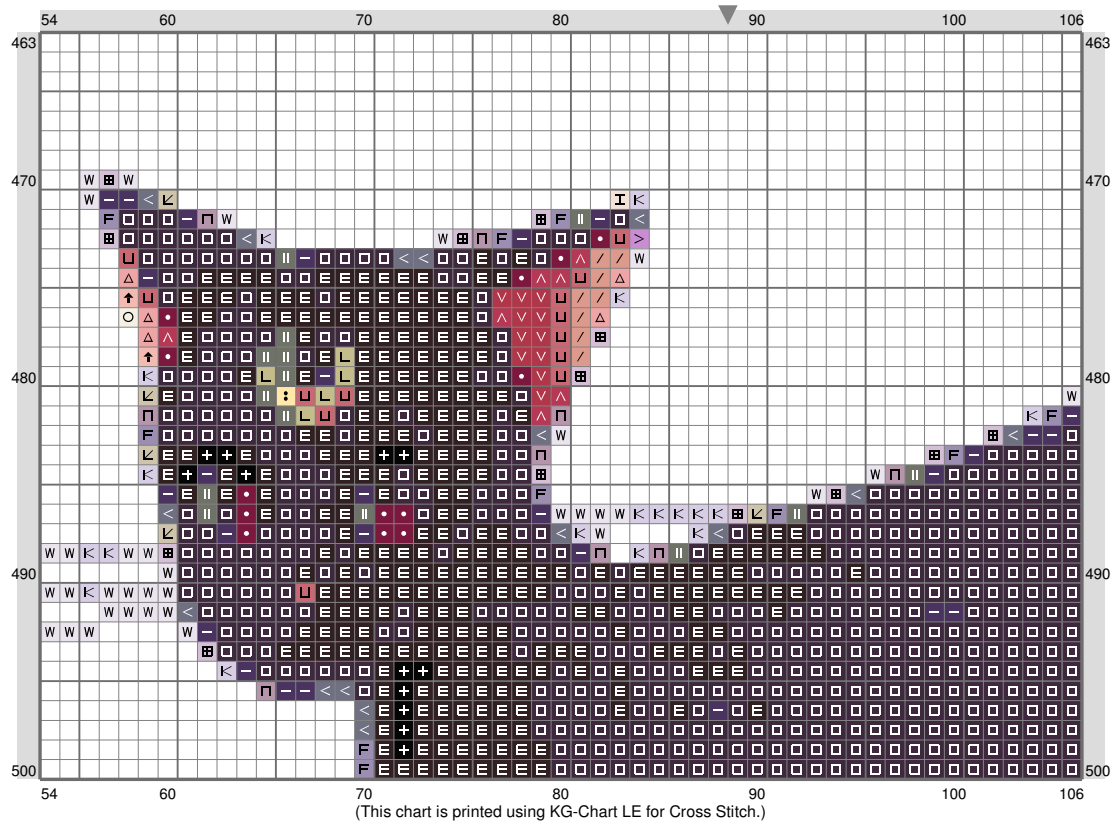


(This chart is printed using KG-Chart LE for Cross Stitch.)

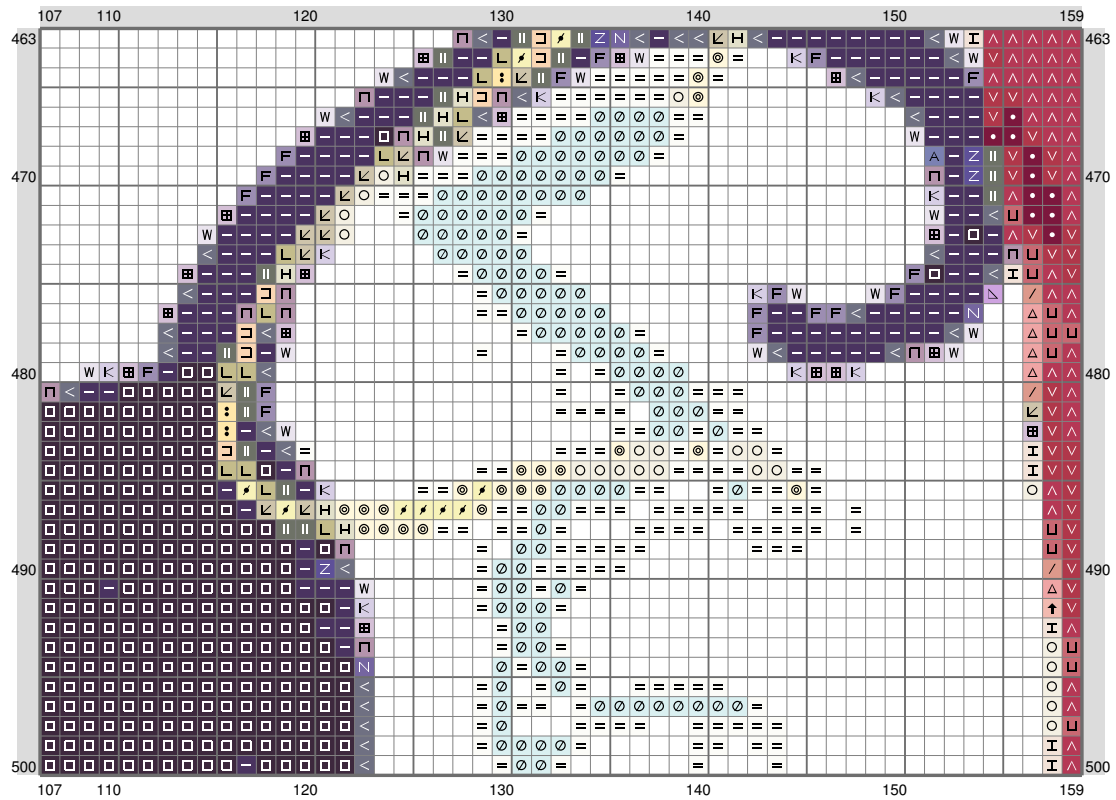
ESM Part N



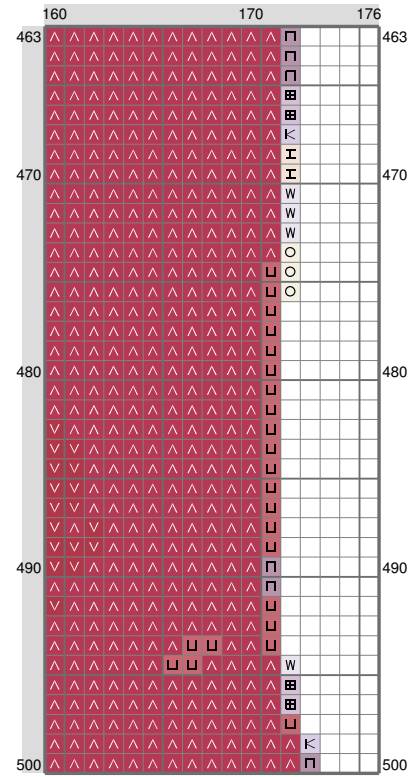
ESM Part N



ESM Part N



ESM Part N



(This chart is printed using KG-Chart LE for Cross Stitch.)

ESM Part N

Stitch Count: 176w x 500h

Finished Size: 22.35 cm x 63.5 cm (20 ct./inch)














































Cloth: Aida

Cloth's Color: White

of colors: 45 Colors

Color Table (DMC)

Cross Stitch

	310	(767 ct)		644	(542 ct)
	939	(2185 ct)		543	(559 ct)
	823	(2151 ct)		168	(770 ct)
	336	(823 ct)		762	(6096 ct)
	311	(690 ct)		153	(1198 ct)
	824	(2385 ct)		744	(380 ct)
	312	(1526 ct)		3078	(268 ct)
	816	(579 ct)		ECRU	(371 ct)
	915	(509 ct)		3823	(454 ct)
	355	(417 ct)		3841	(145 ct)
	150	(930 ct)		BLANC	(3706 ct)
	645	(323 ct)			
	317	(627 ct)			
	3722	(626 ct)			
	3772	(695 ct)			
	158	(1507 ct)			
	3807	(2819 ct)			
	3746	(1955 ct)			
	793	(1998 ct)			
	794	(463 ct)			
	414	(3557 ct)			
	155	(2279 ct)			
	341	(2078 ct)			
	809	(1949 ct)			
	451	(610 ct)			
	152	(692 ct)			
	209	(992 ct)			
	210	(3710 ct)			
	3013	(359 ct)			
	524	(484 ct)			
	754	(616 ct)			
	738	(432 ct)			
	3743	(427 ct)			
	211	(2463 ct)			