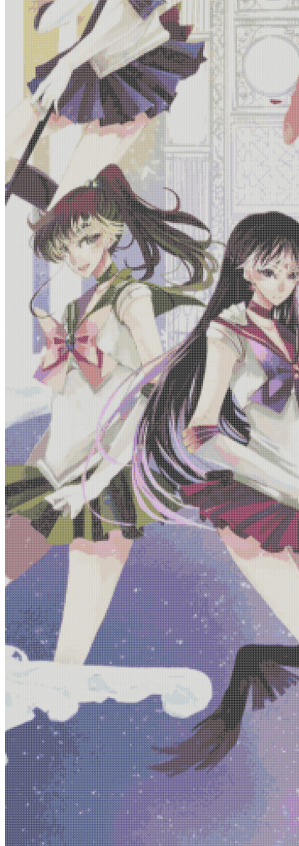
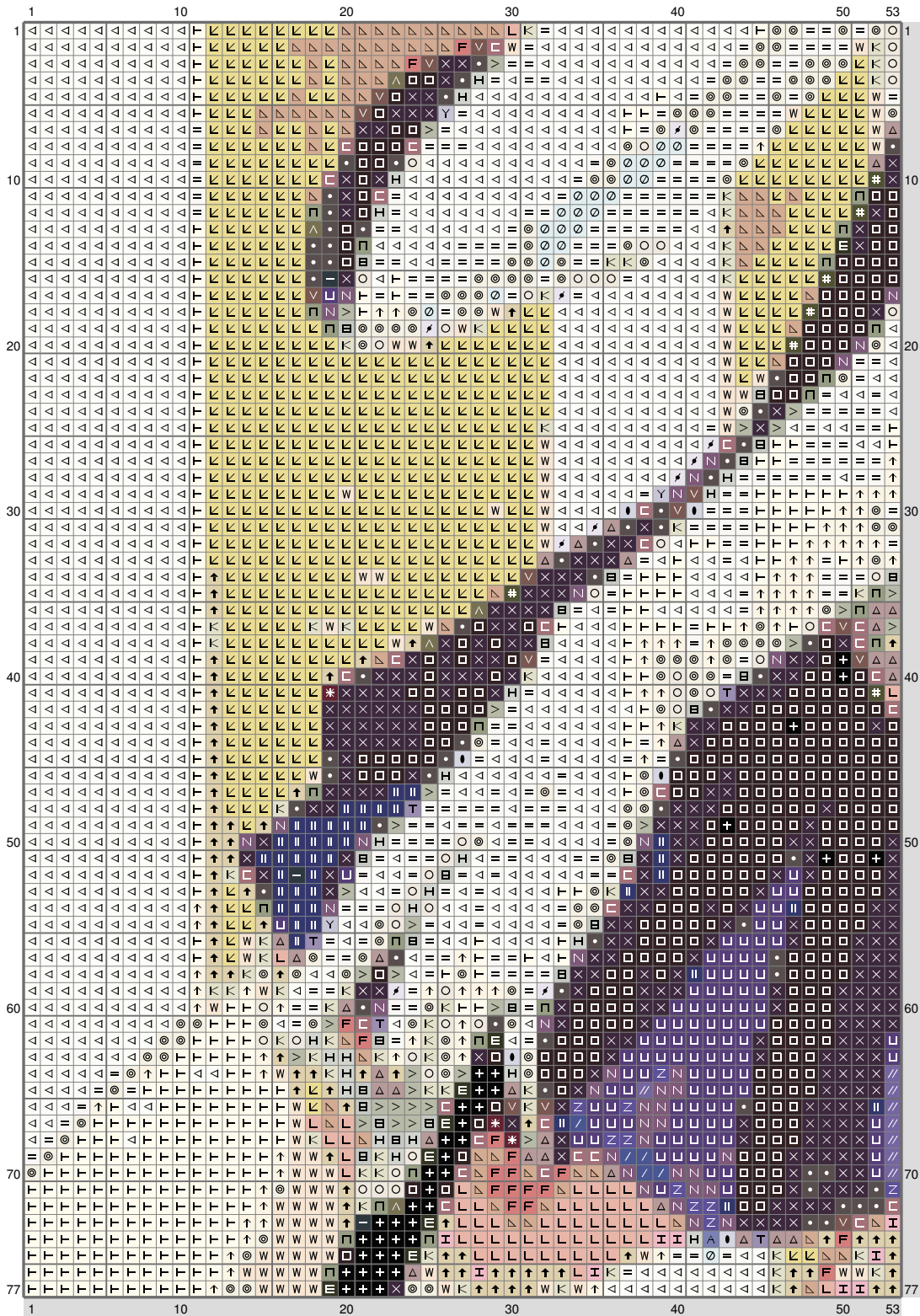


ESM Part J

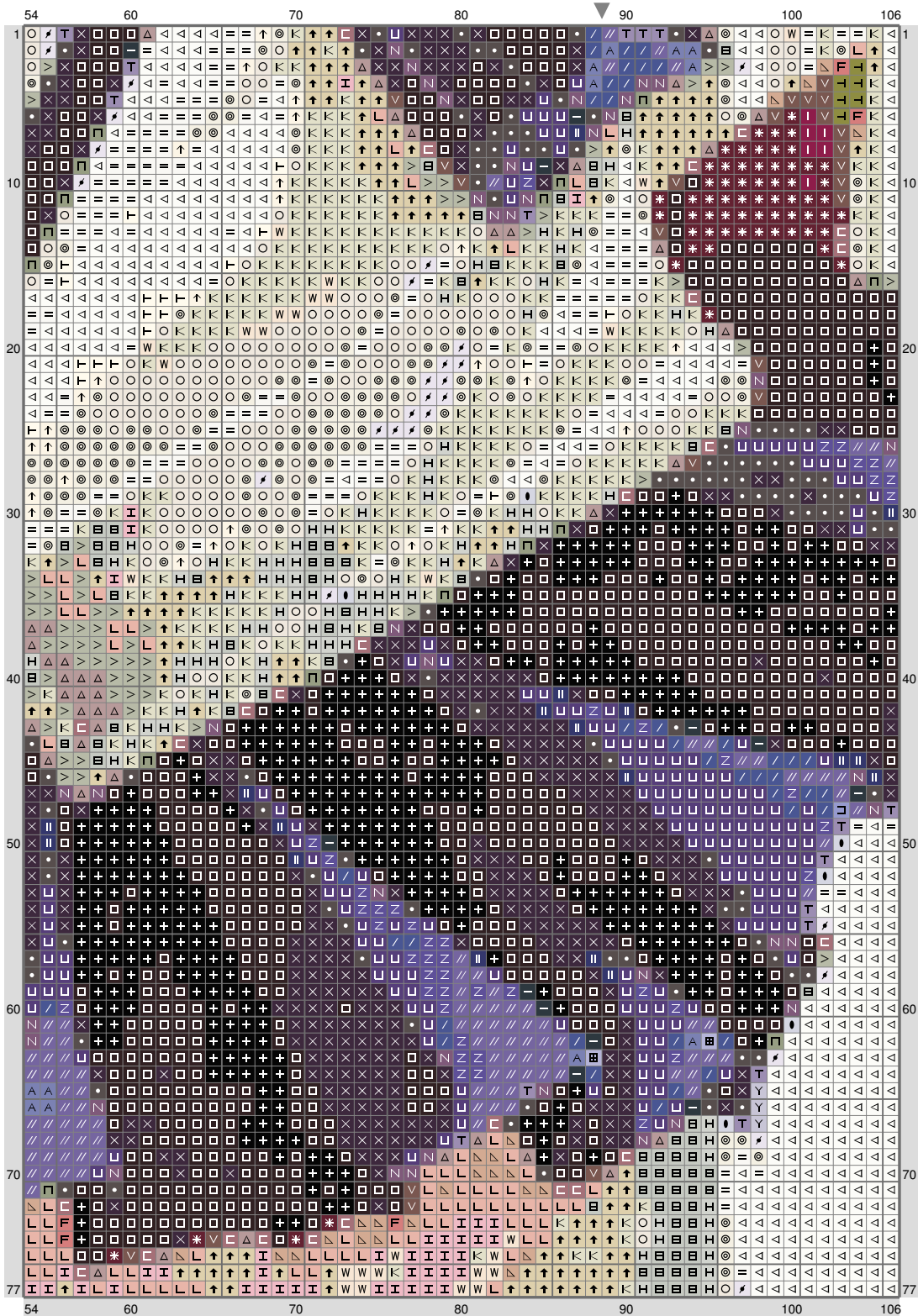


ESM Part J



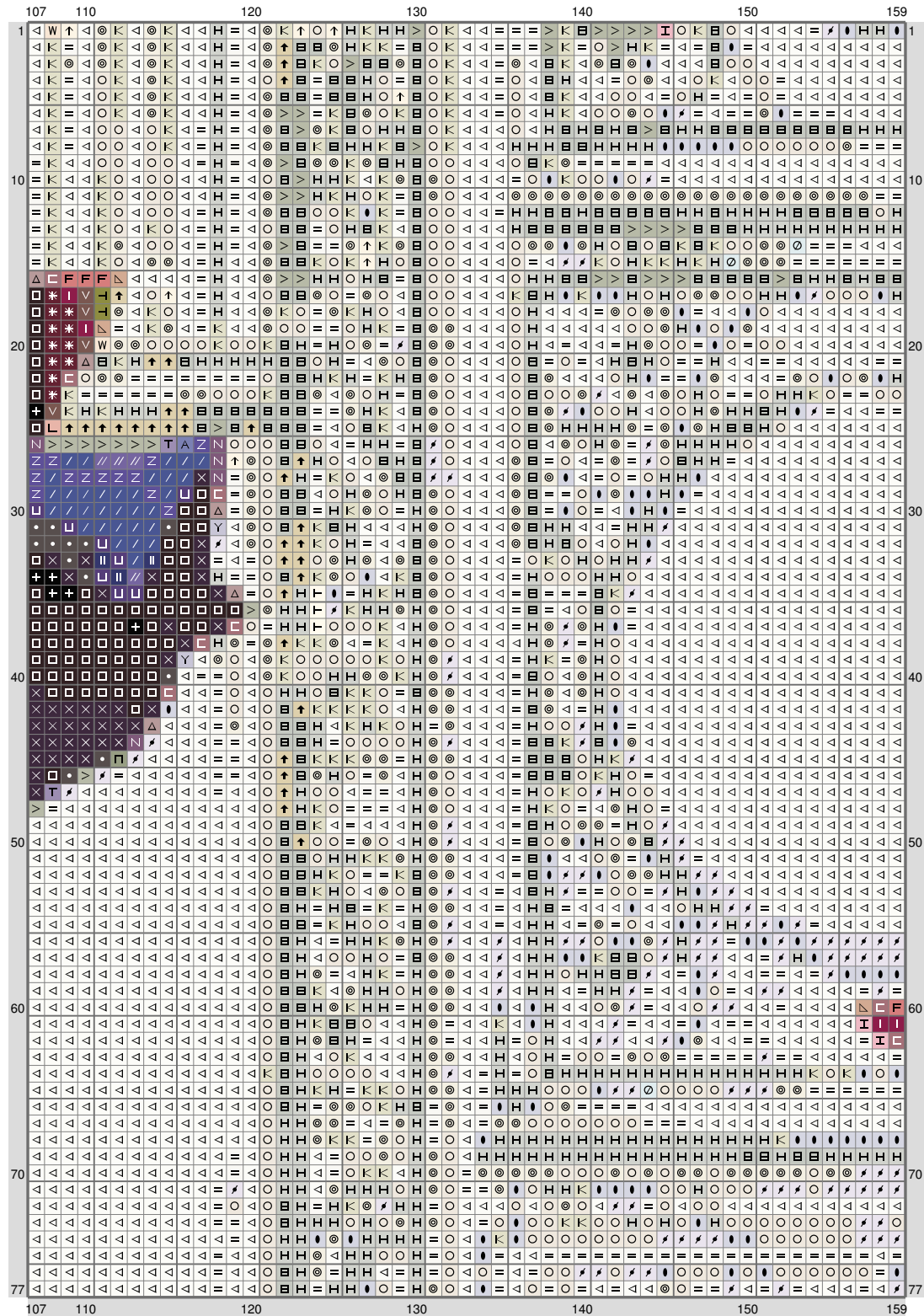
(This chart is printed using KG-Chart LE for Cross Stitch.)

ESM Part J



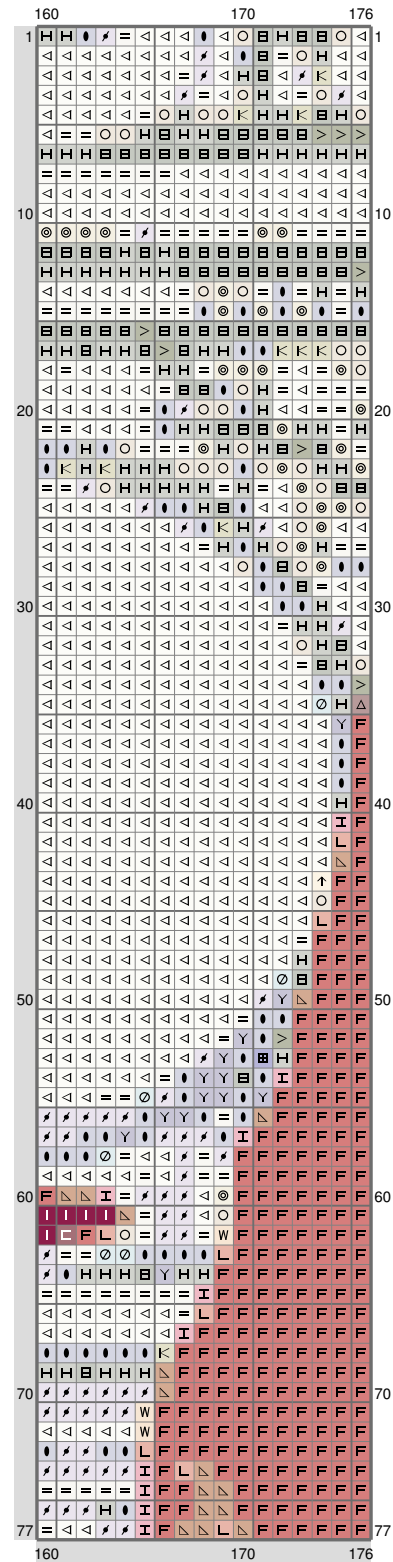
(This chart is printed using KG-Chart LE for Cross Stitch.)

ESM Part J



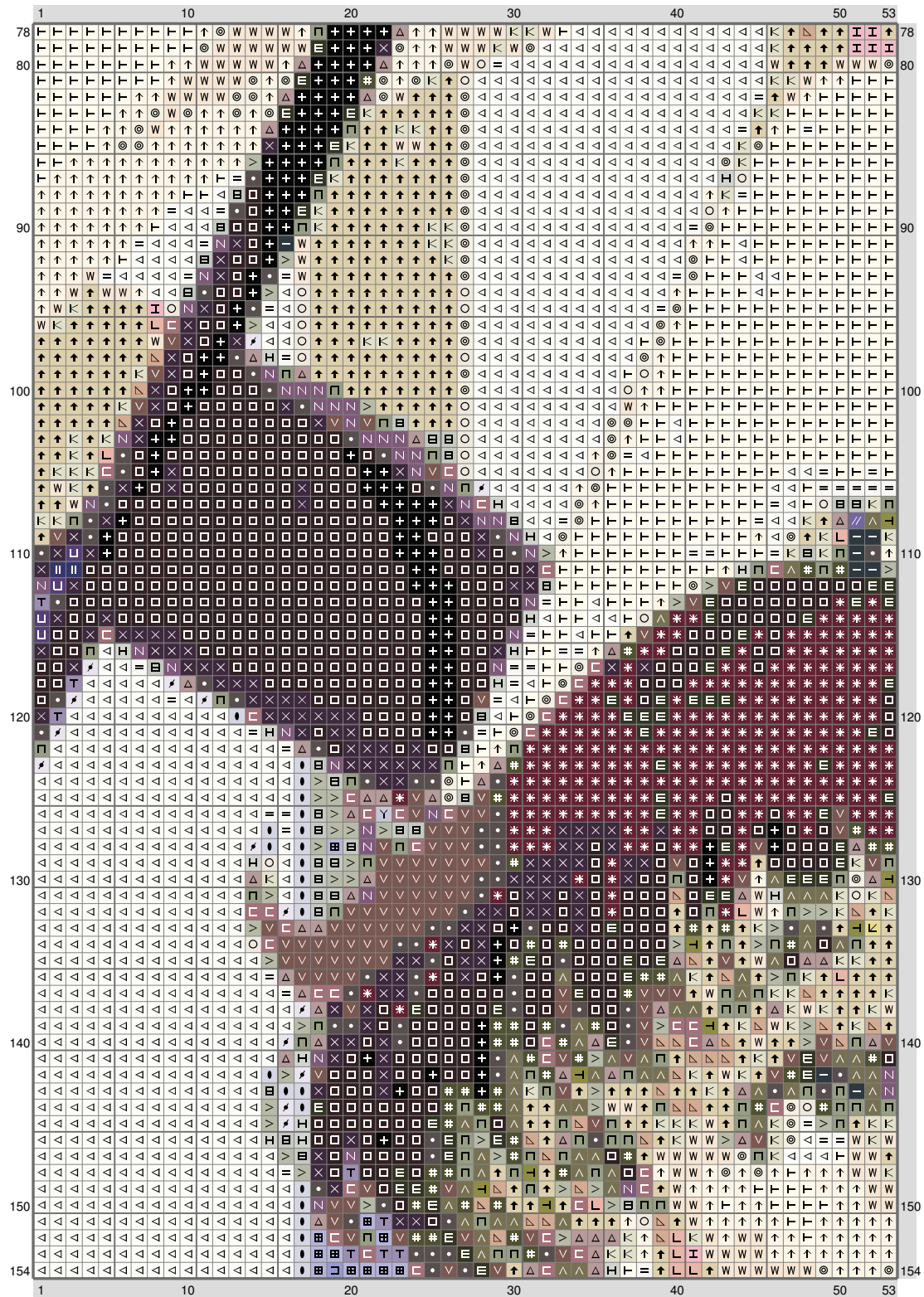
(This chart is printed using KG-Chart LE for Cross Stitch.)

ESM Part J



(This chart is printed using KG-Chart LE for Cross Stitch.)

ESM Part J



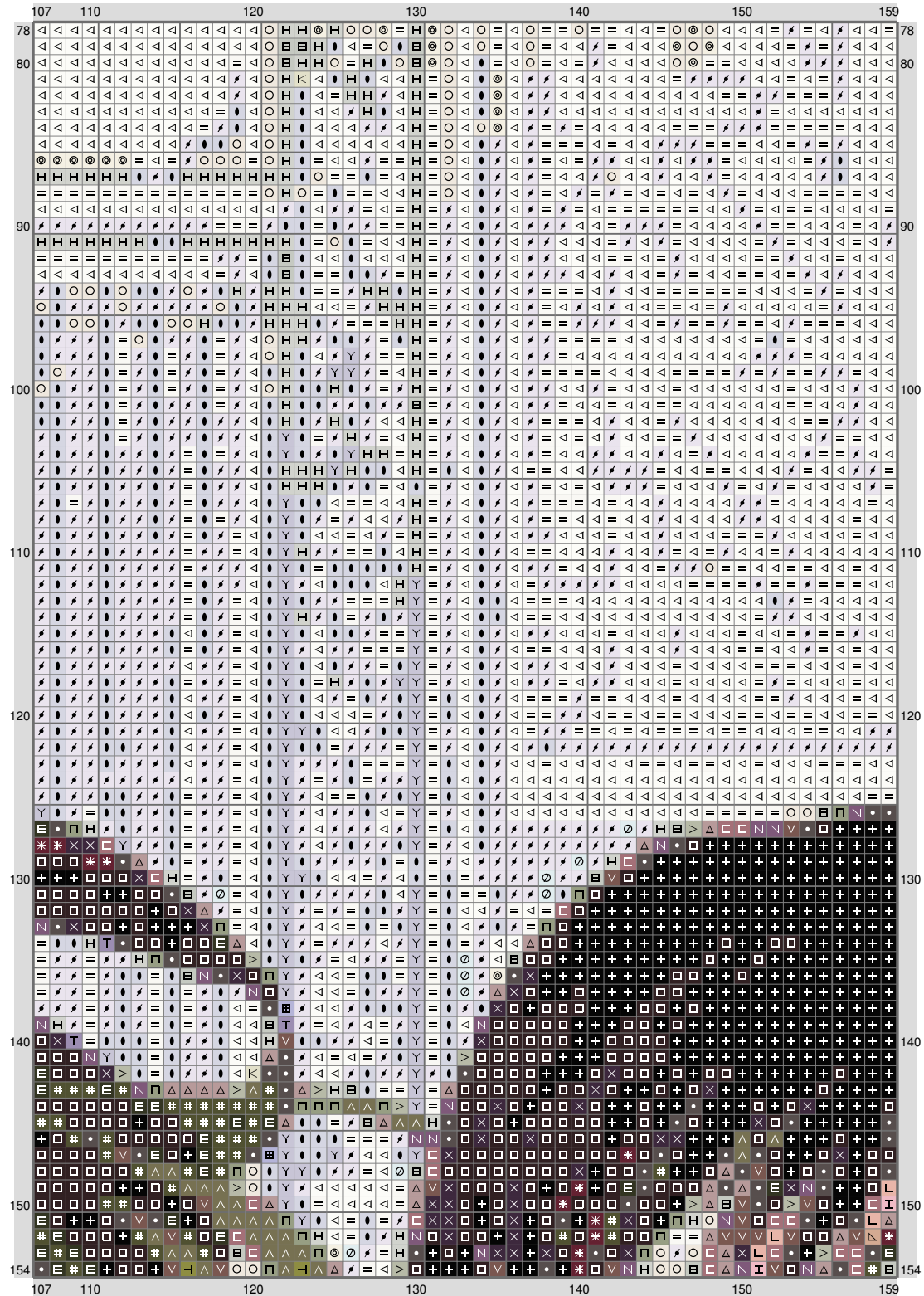
(This chart is printed using KG-Chart LE for Cross Stitch.)

ESM Part J

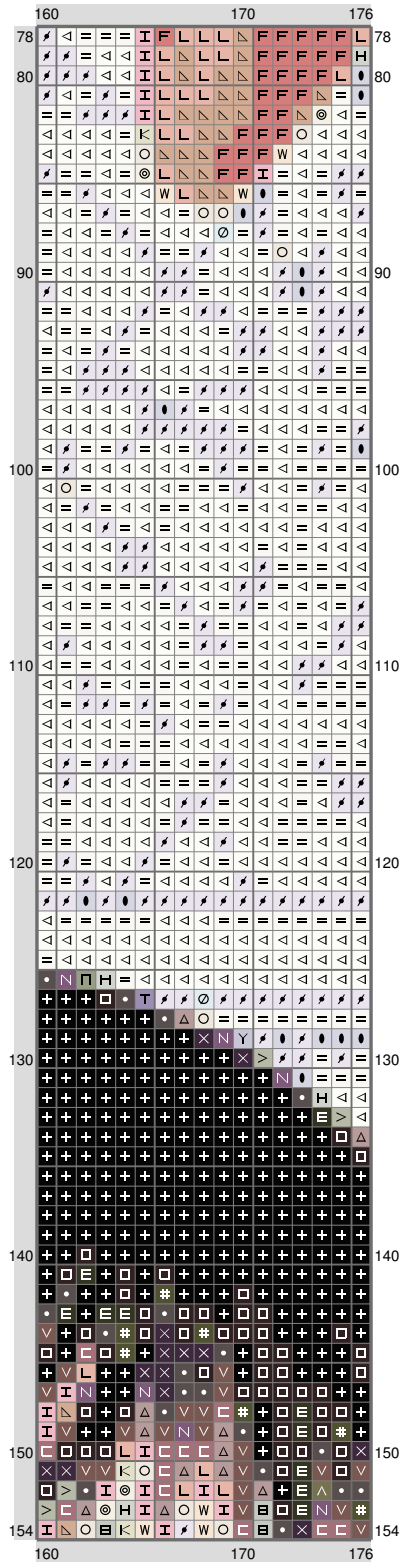


(This chart is printed using KG-Chart LE for Cross Stitch.)

ESM Part J

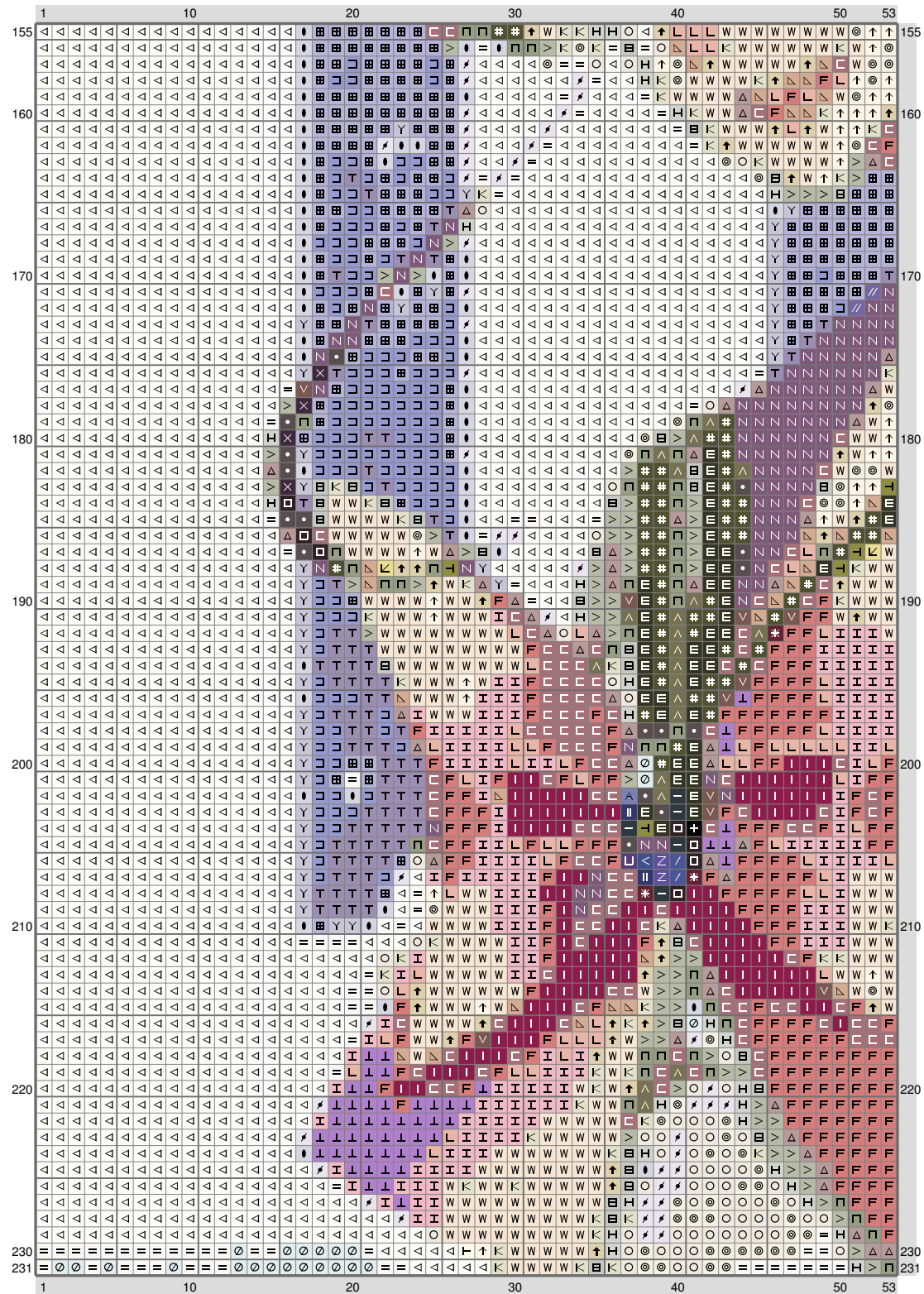


ESM Part J



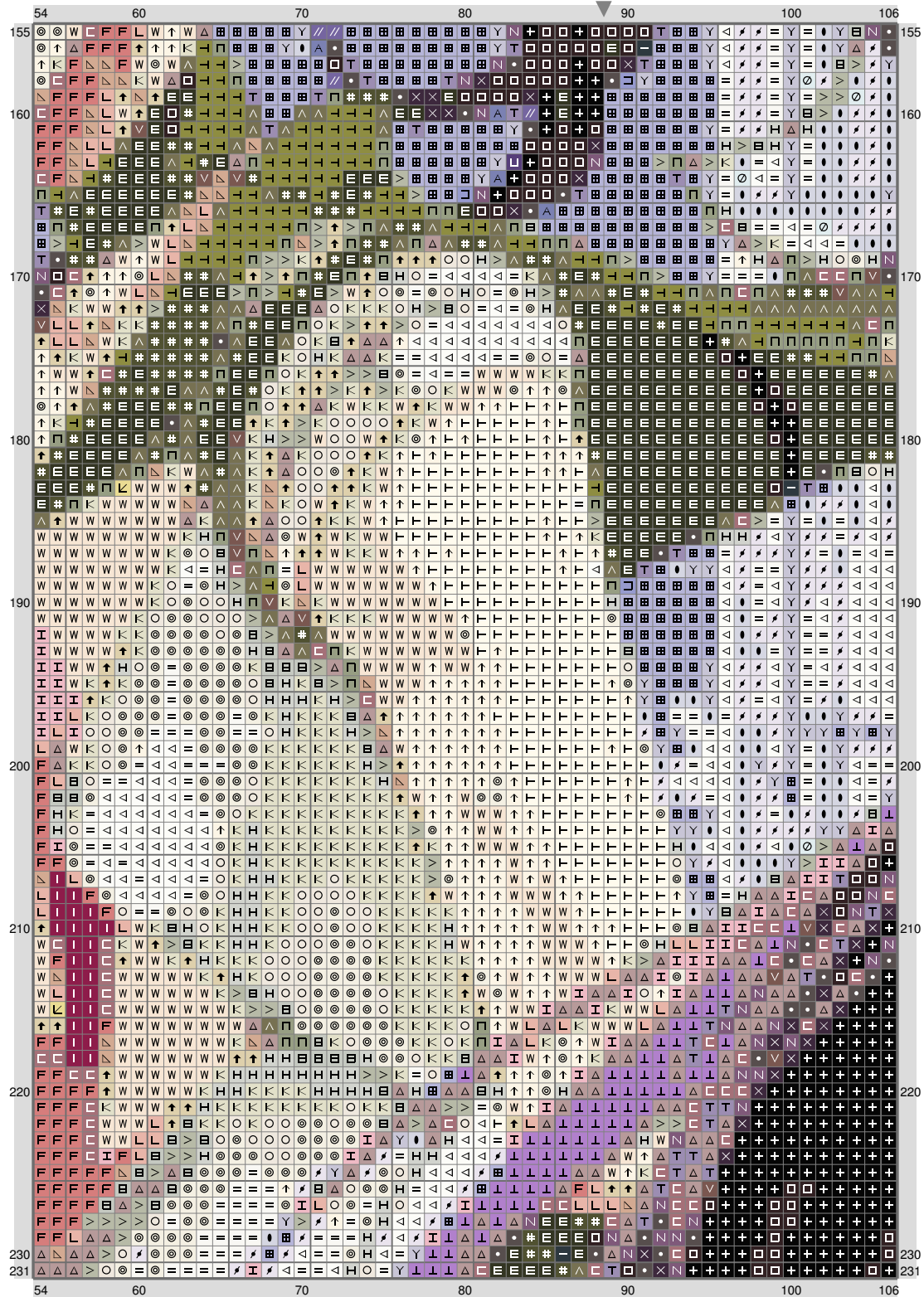
(This chart is printed using KG-Chart LE for Cross Stitch.)

ESM Part J

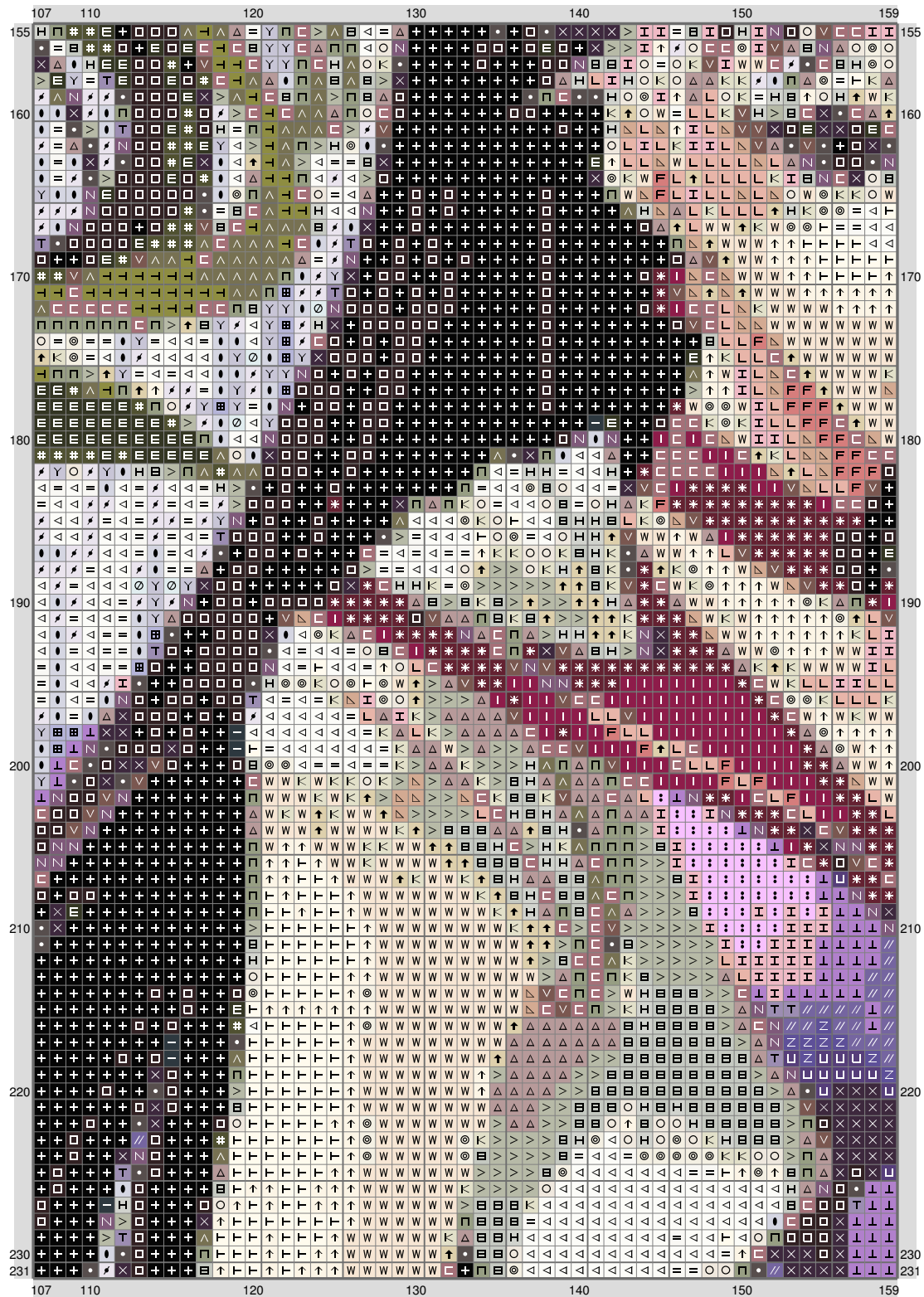


(This chart is printed using KG-Chart LE for Cross Stitch.)

ESM Part J

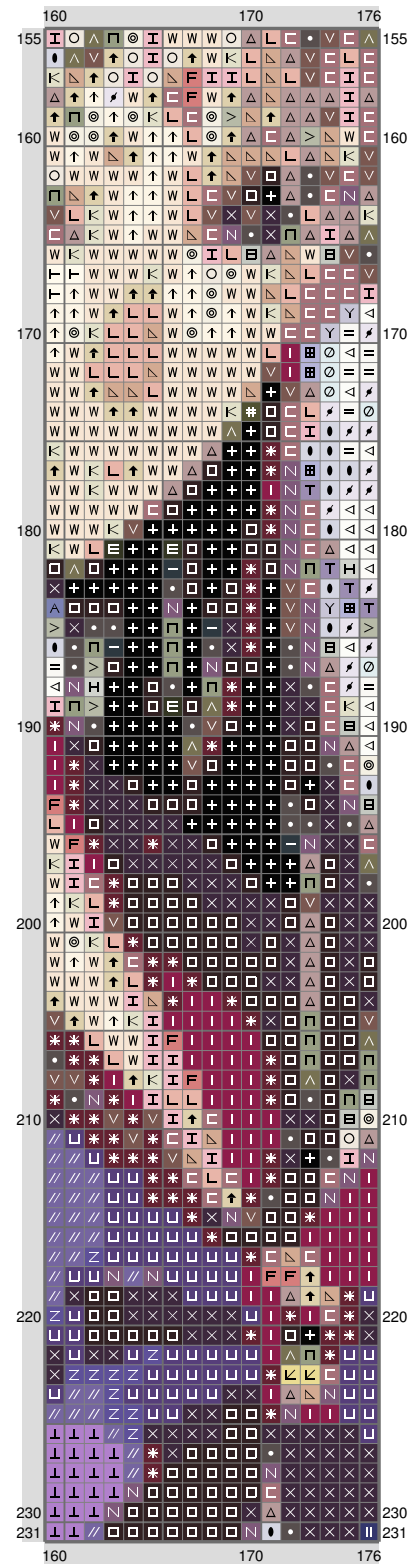


ESM Part J



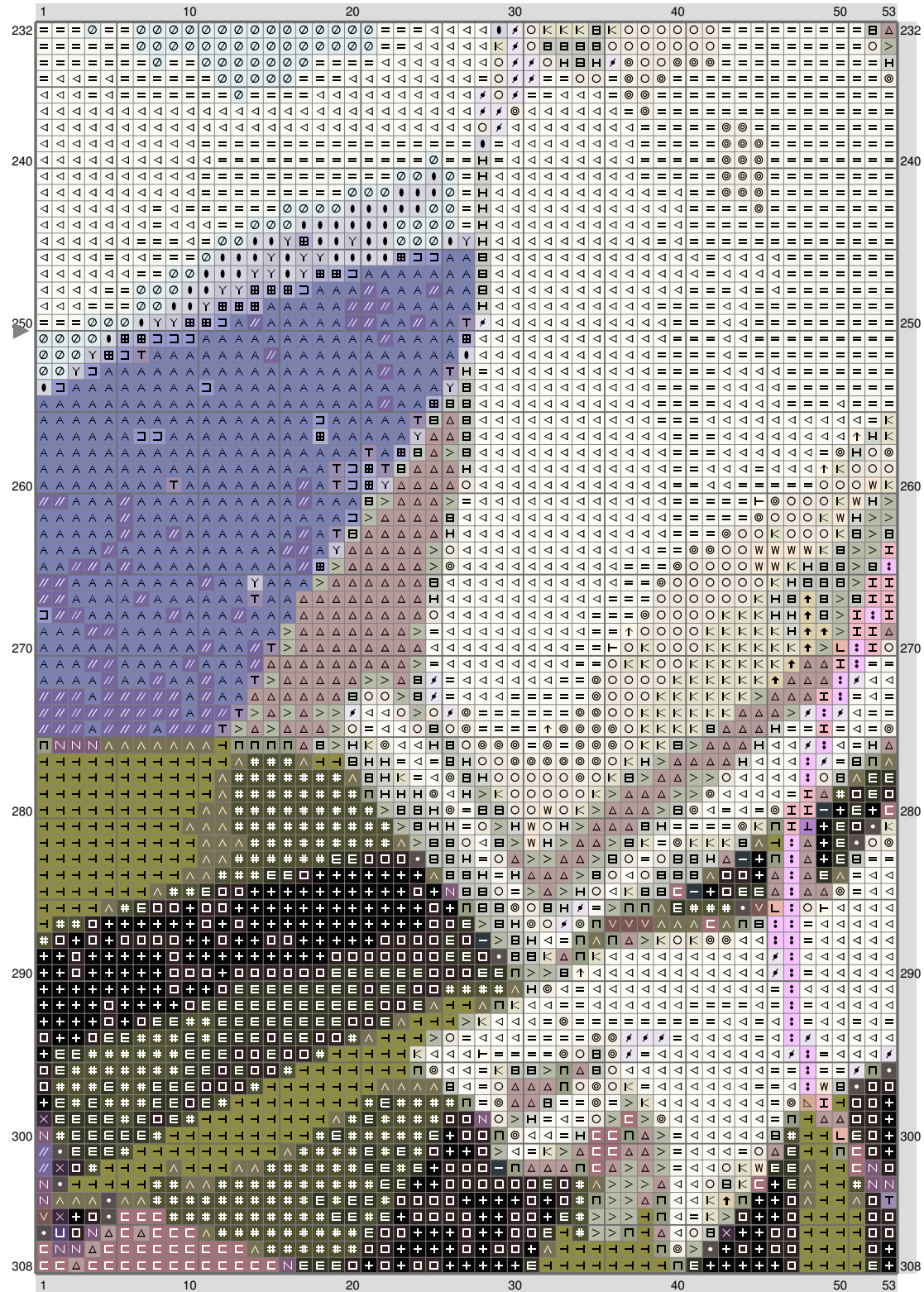
(This chart is printed using KG-Chart LE for Cross Stitch.)

ESM Part J



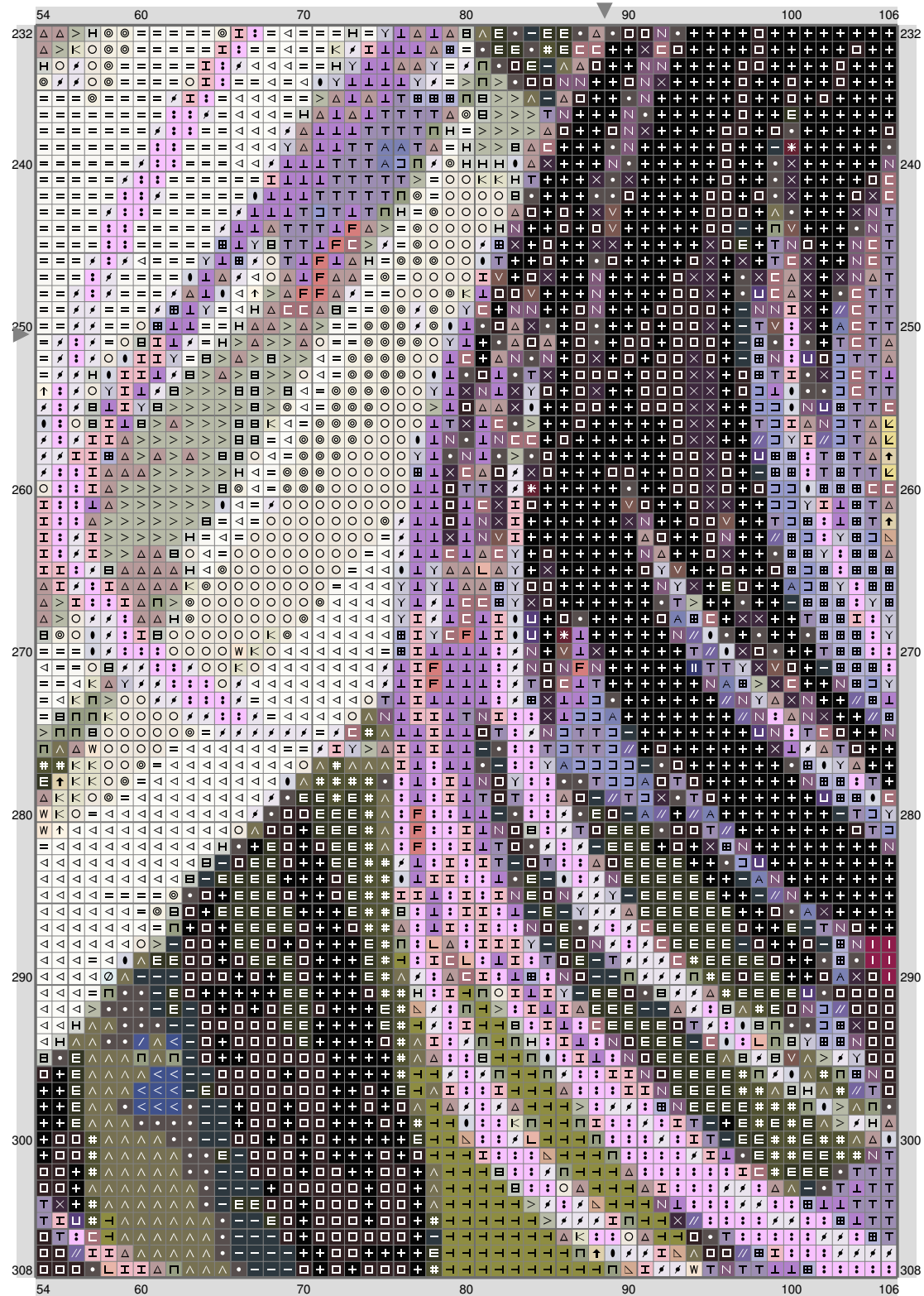
(This chart is printed using KG-Chart LE for Cross Stitch.)

ESM Part J



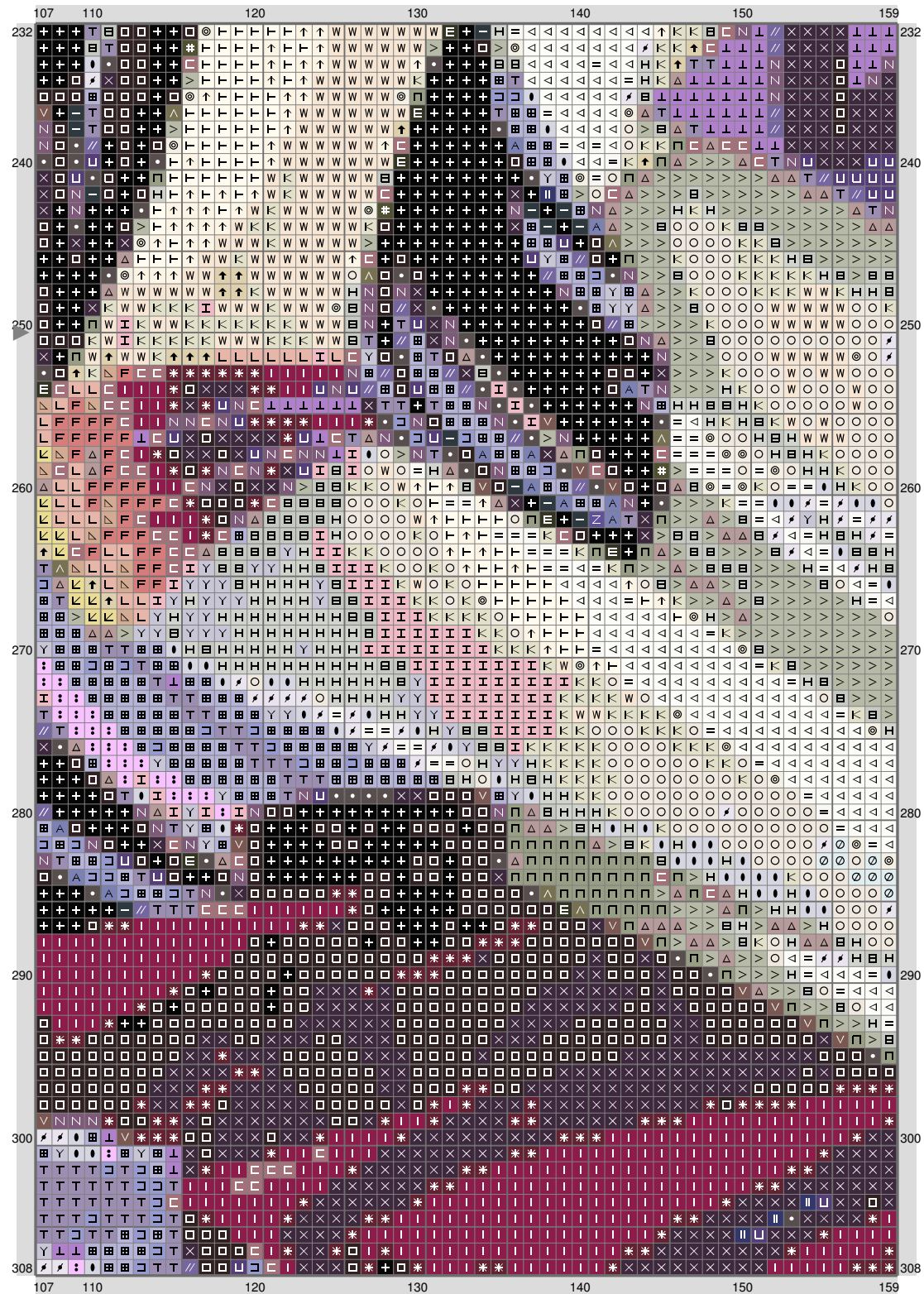
(This chart is printed using KG-Chart LE for Cross Stitch.)

ESM Part J

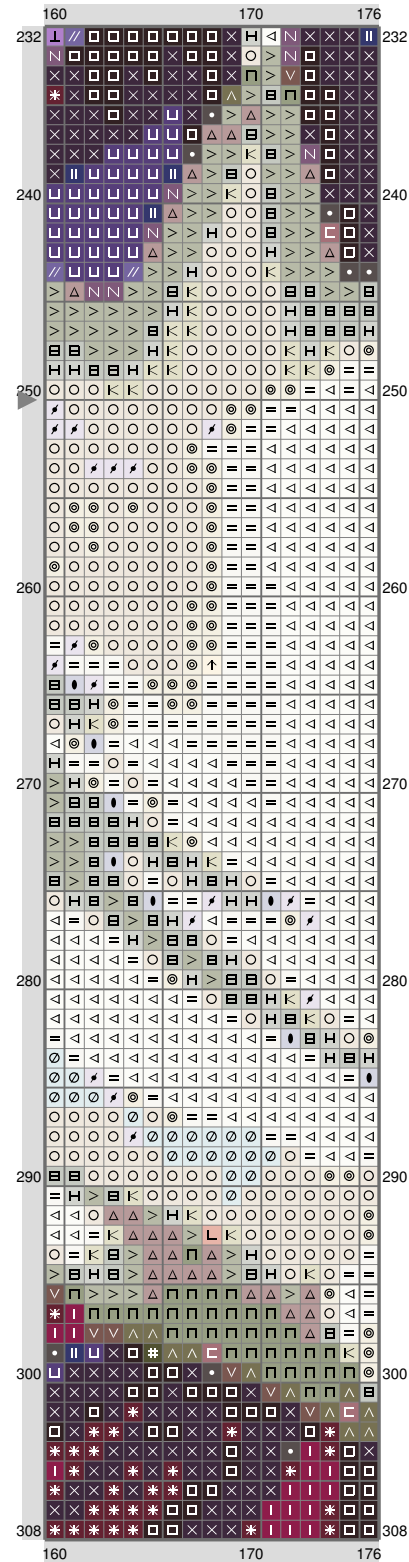


(This chart is printed using KG-Chart LE for Cross Stitch.)

ESM Part J

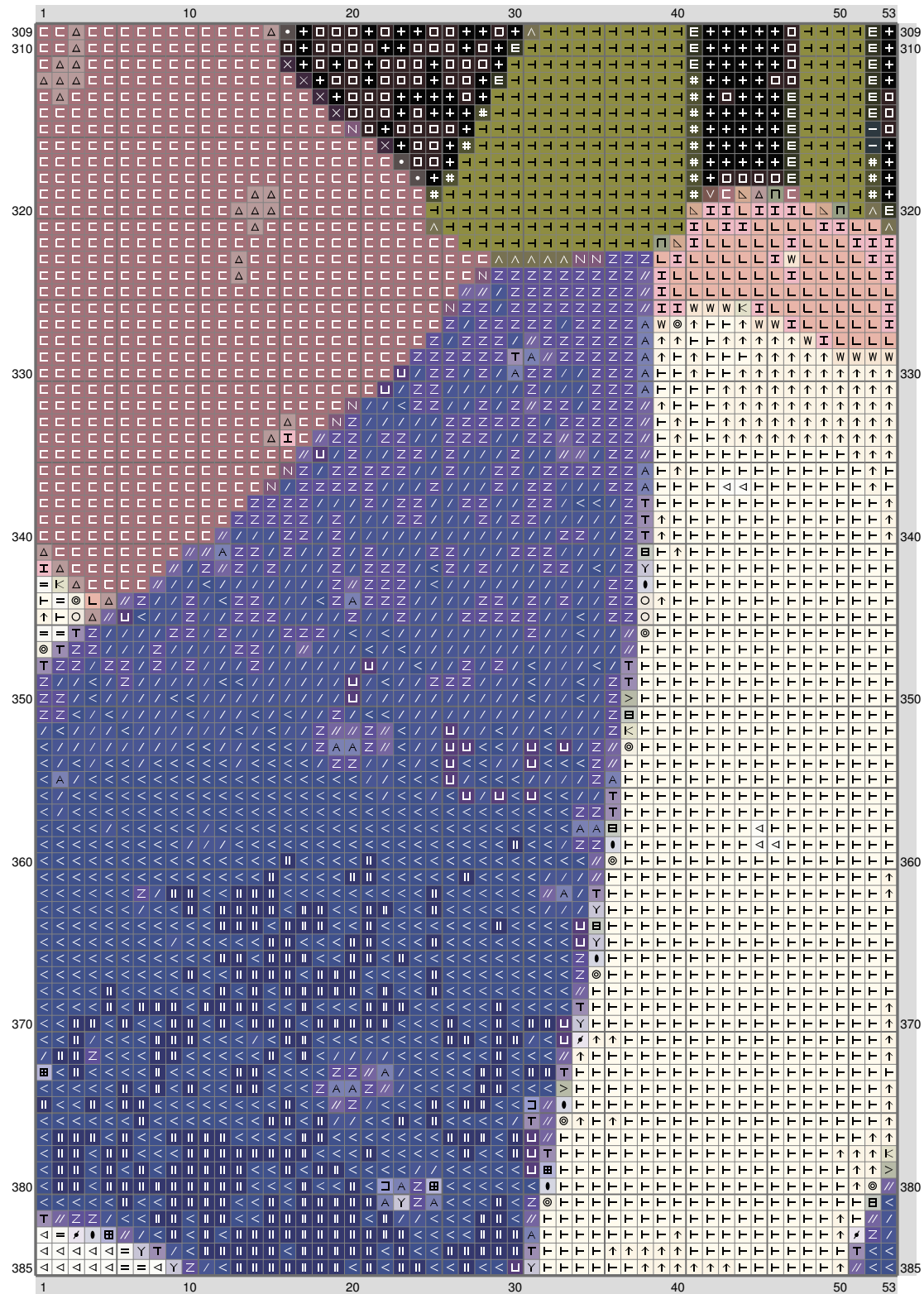


ESM Part J

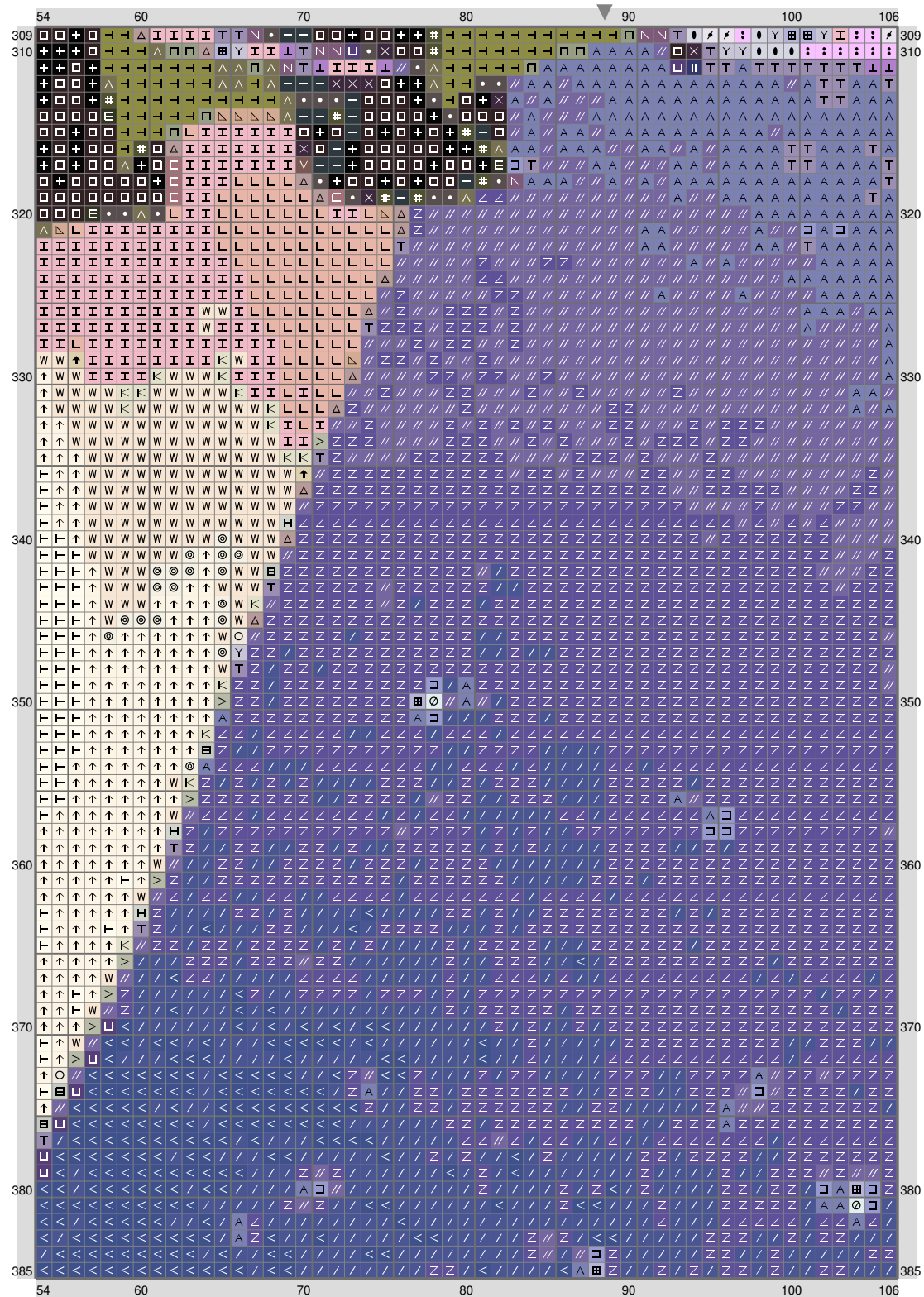


(This chart is printed using KG-Chart LE for Cross Stitch.)

ESM Part J

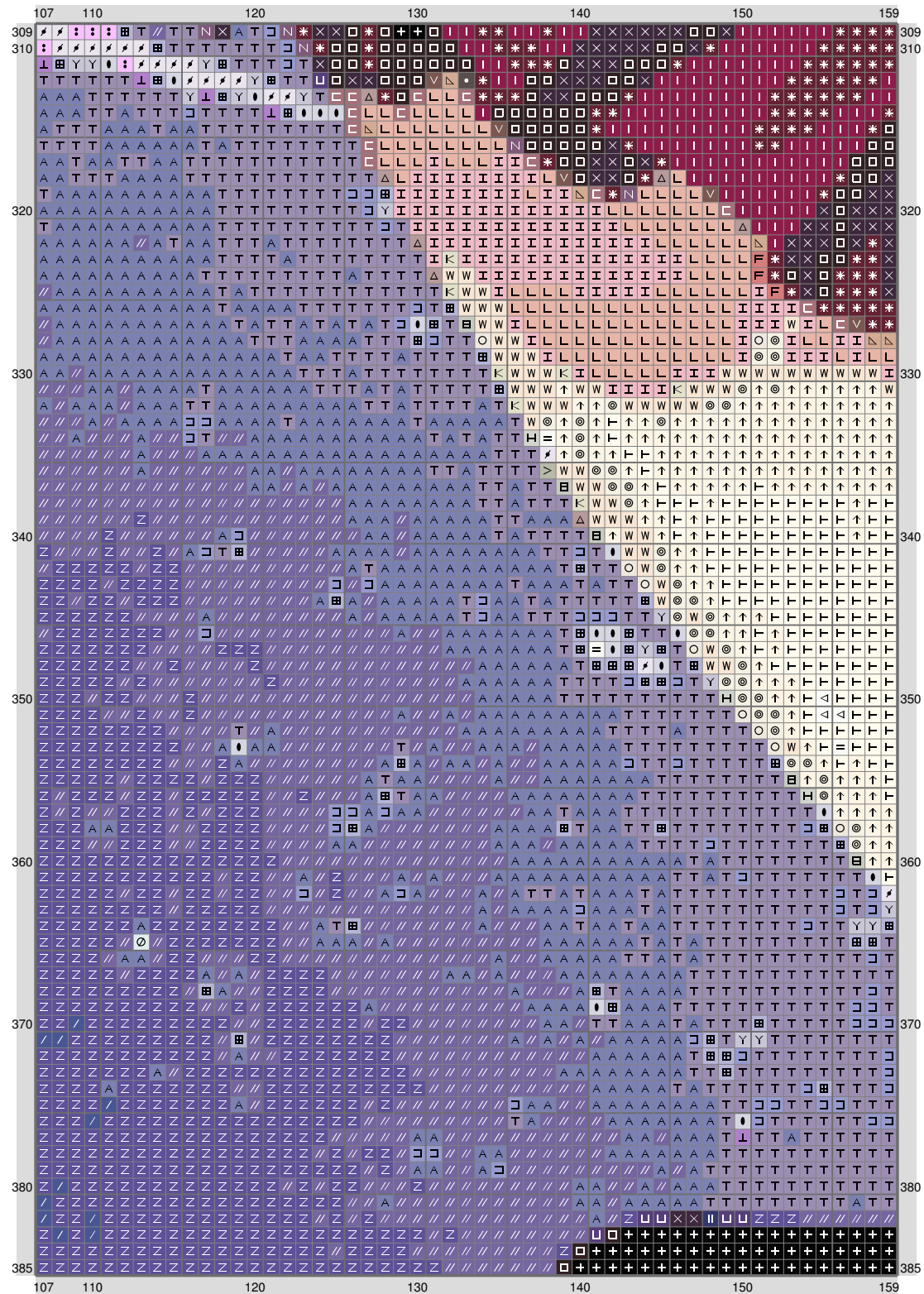


ESM Part J



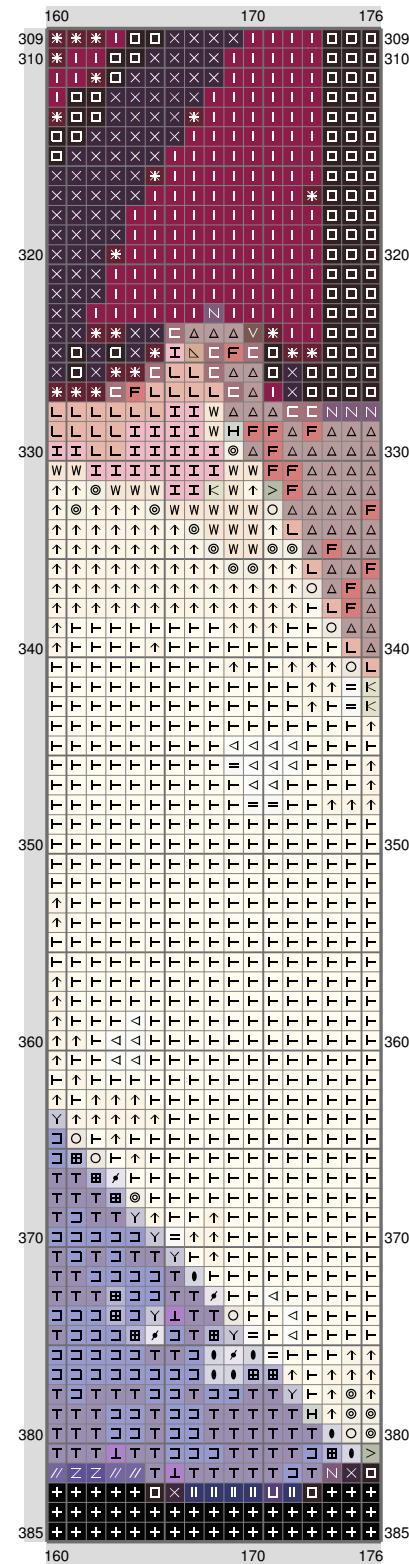
(This chart is printed using KG-Chart LE for Cross Stitch.)

ESM Part J



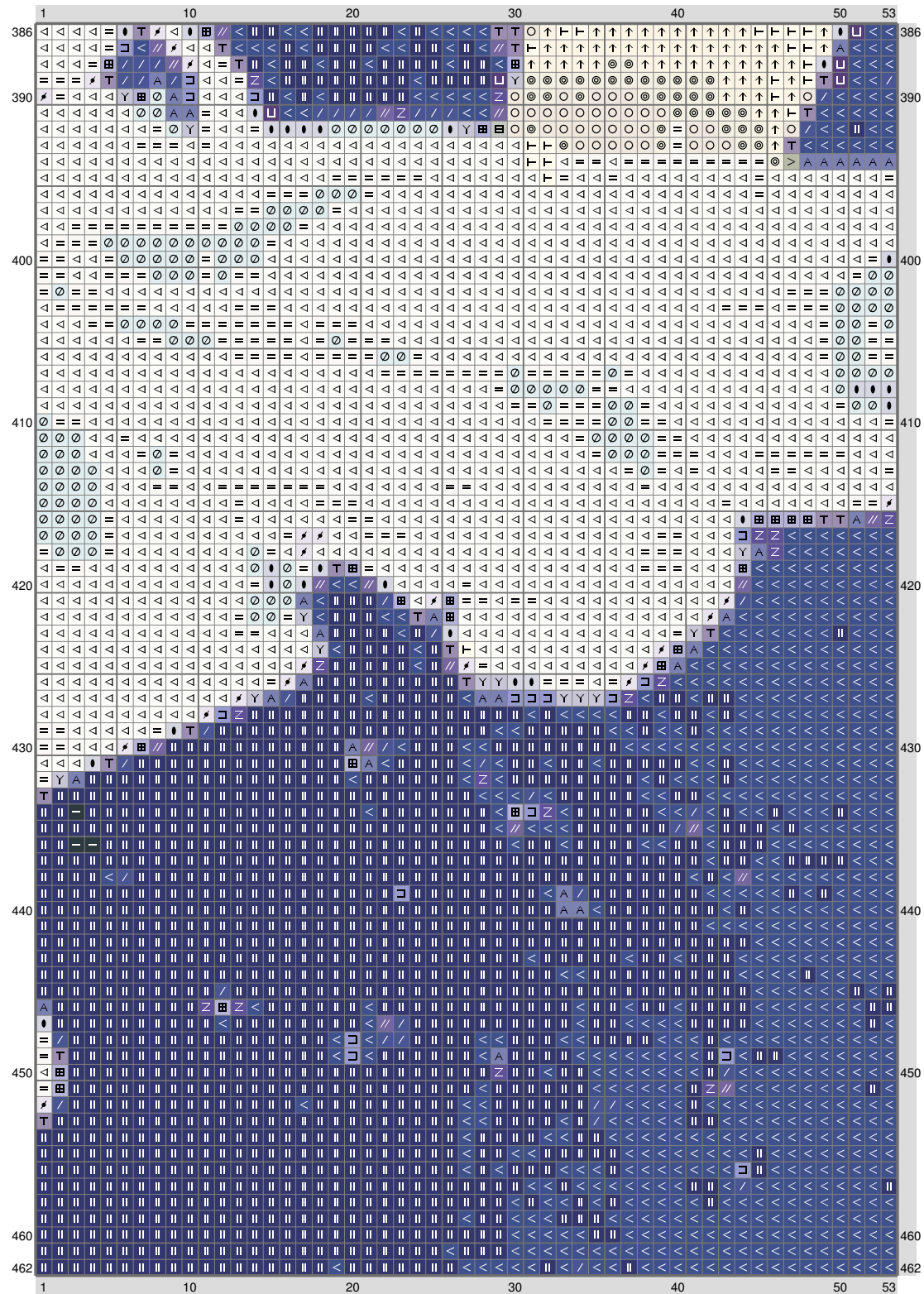
(This chart is printed using KG-Chart LE for Cross Stitch.)

ESM Part J



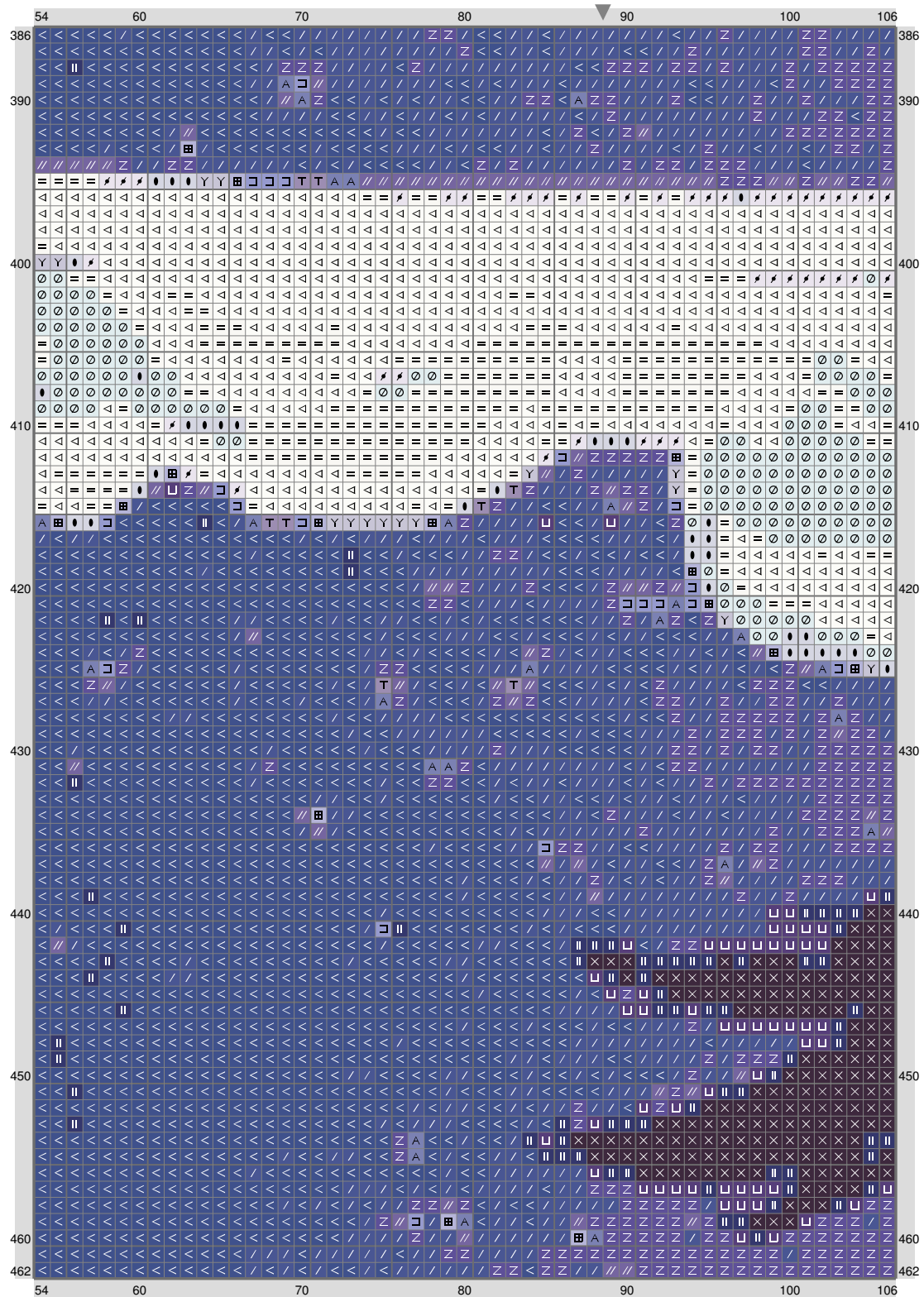
(This chart is printed using KG-Chart LE for Cross Stitch.)

ESM Part J



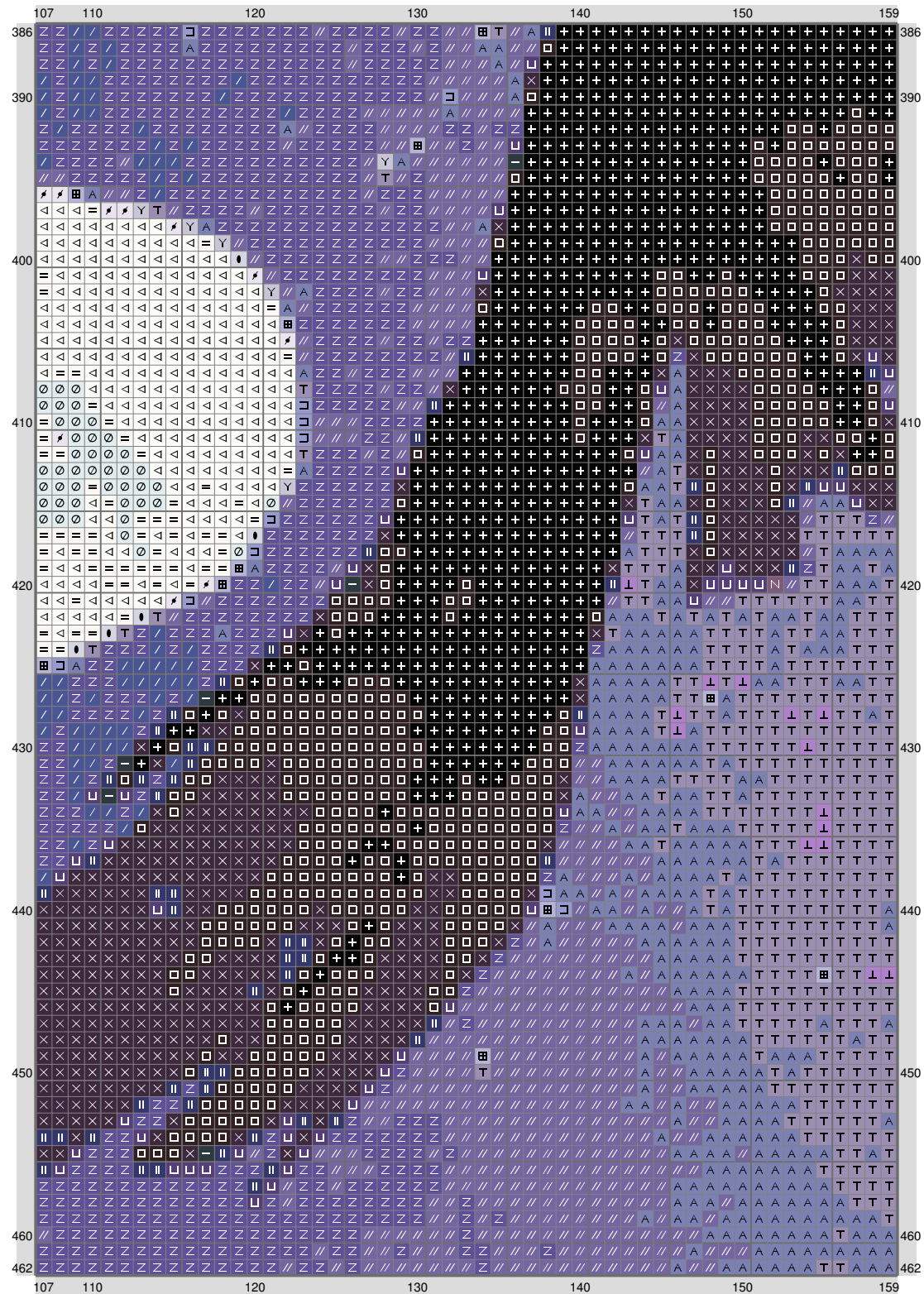
(This chart is printed using KG-Chart LE for Cross Stitch.)

ESM Part J

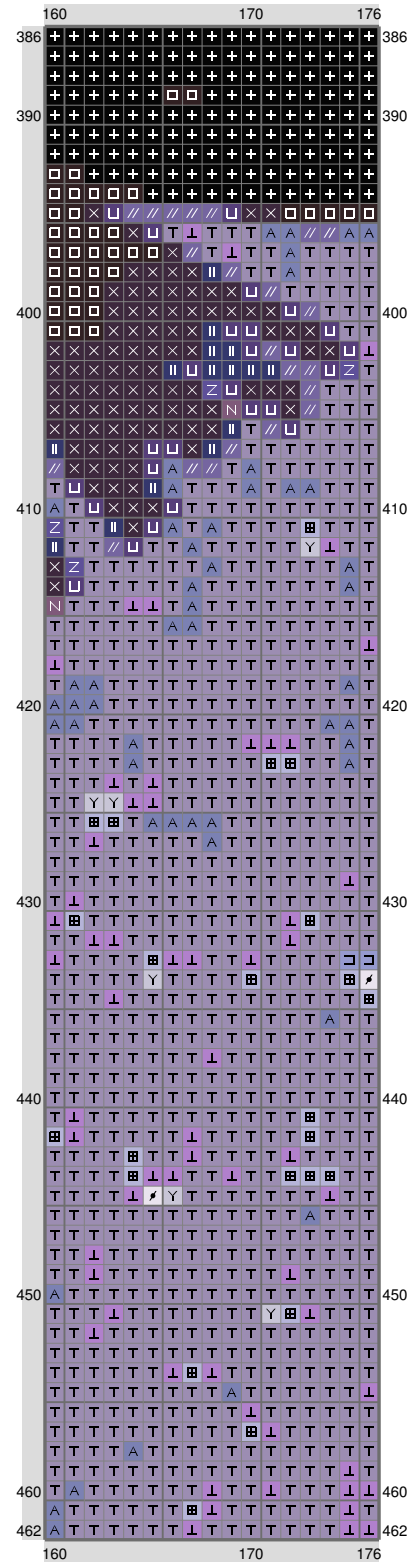


(This chart is printed using KG-Chart LE for Cross Stitch.)

ESM Part J

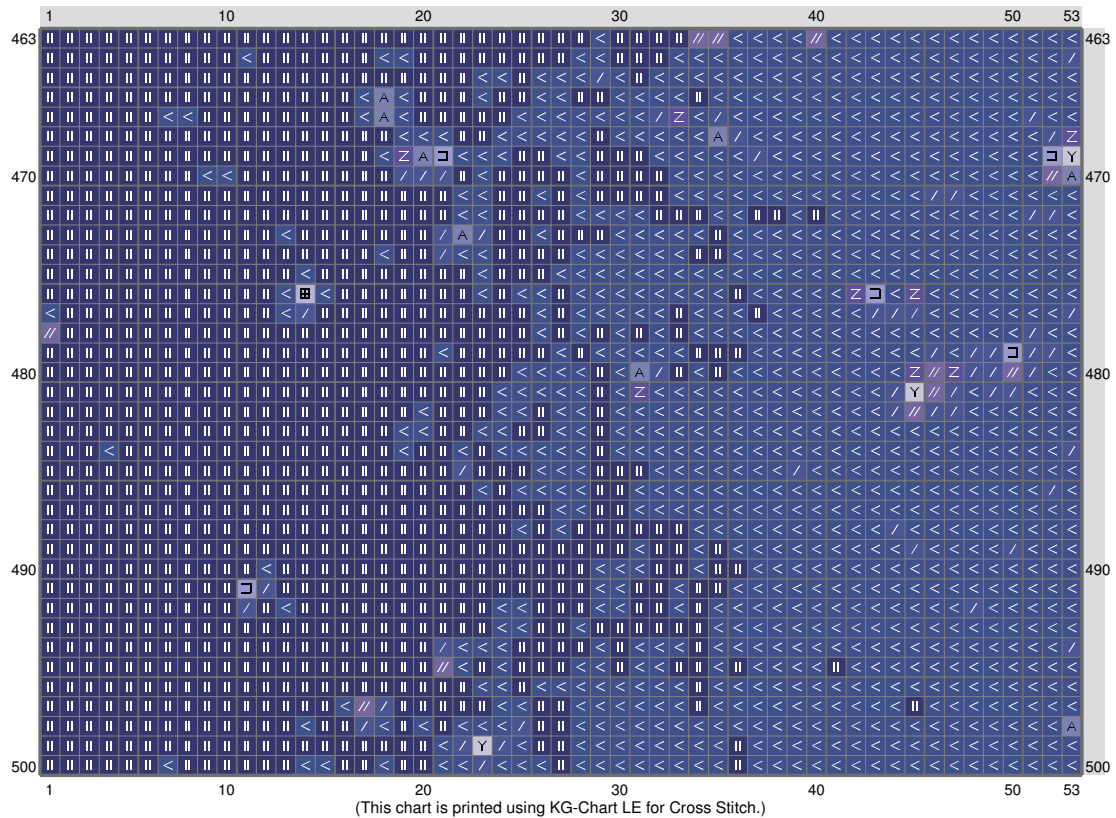


ESM Part J

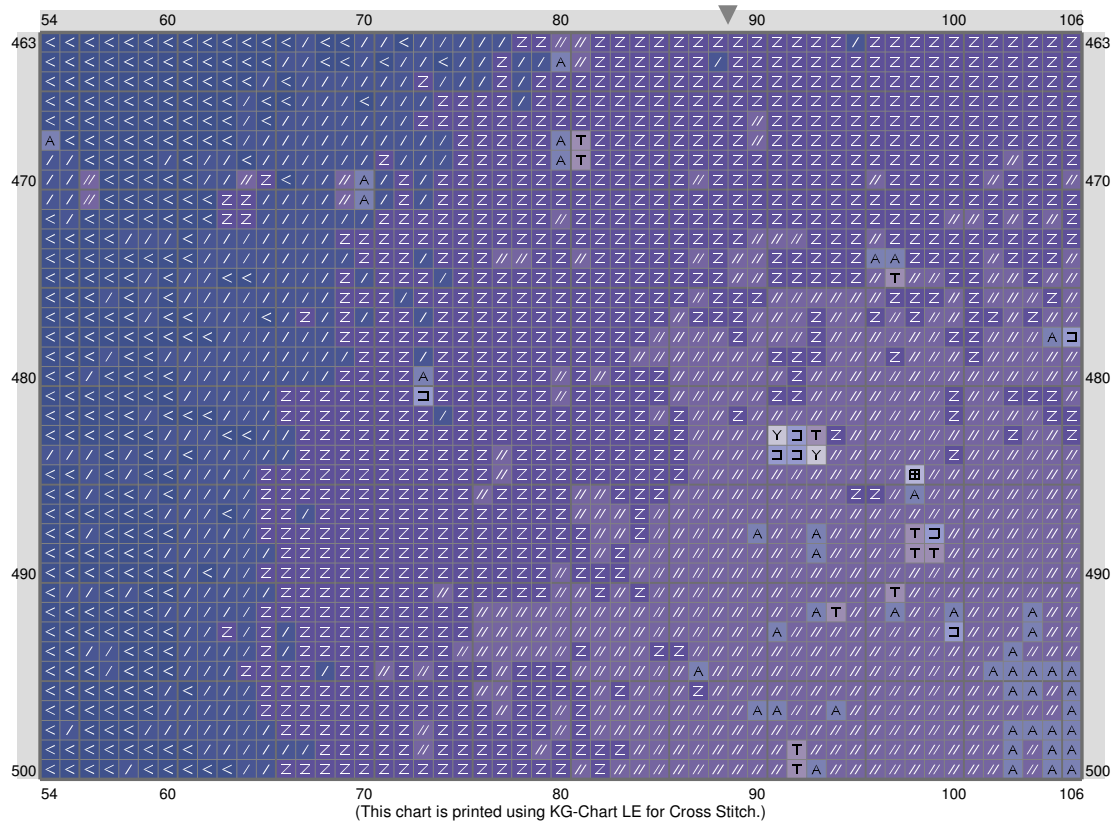


(This chart is printed using KG-Chart LE for Cross Stitch.)

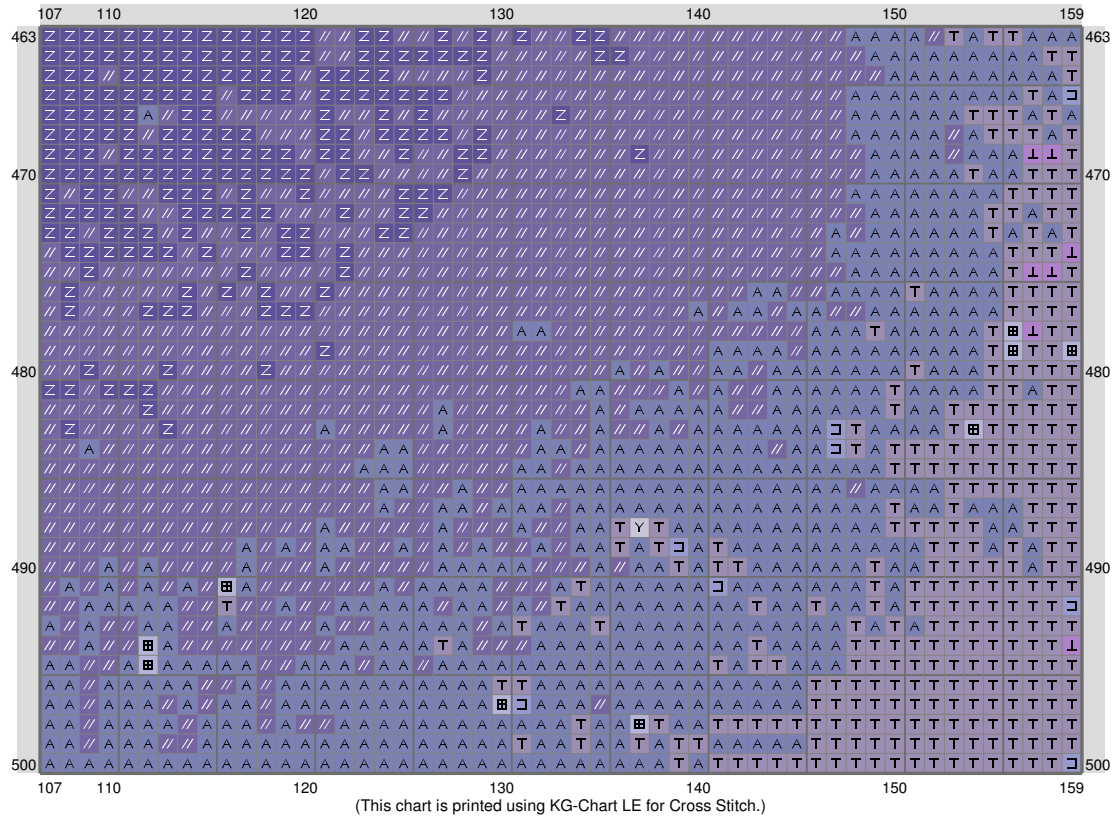
ESM Part J



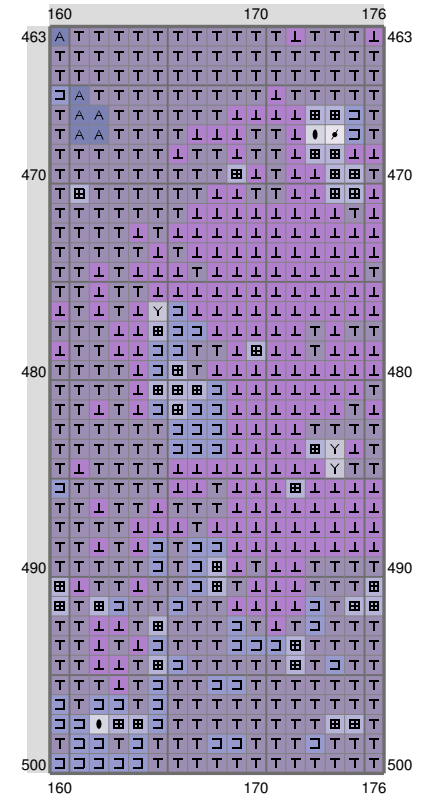
ESM Part J



ESM Part J



ESM Part J



ESM Part J

Stitch Count: 176w x 500h

Finished Size: 22.35 cm x 63.5 cm (20 ct./inch)






















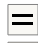



























Cloth: Aida

Cloth's Color: White

of colors: 49 Colors

Color Table (DMC)

Cross Stitch

	310	(4776 ct)		648	(1408 ct)
	934	(965 ct)		3713	(971 ct)
	939	(5105 ct)		644	(1509 ct)
	500	(183 ct)		739	(1769 ct)
	823	(2488 ct)		318	(677 ct)
	814	(951 ct)		415	(1217 ct)
	3685	(898 ct)		153	(338 ct)
	936	(707 ct)		762	(1931 ct)
	844	(743 ct)		822	(1995 ct)
	839	(375 ct)		ECRU	(1428 ct)
	3051	(519 ct)		3756	(560 ct)
	311	(2747 ct)		3865	(3936 ct)
	824	(4359 ct)		3866	(1478 ct)
	803	(636 ct)		712	(3069 ct)
	312	(2296 ct)		BLANC	(11624 ct)
	158	(4416 ct)			
	3041	(607 ct)			
	3807	(3633 ct)			
	793	(2588 ct)			
	3860	(1343 ct)			
	356	(673 ct)			
	414	(3066 ct)			
	155	(726 ct)			
	580	(780 ct)			
	522	(577 ct)			
	840	(1068 ct)			
	523	(1020 ct)			
	3864	(403 ct)			
	407	(832 ct)			
	165	(662 ct)			
	3047	(1136 ct)			
	341	(508 ct)			
	169	(1058 ct)			
	3023	(1246 ct)			