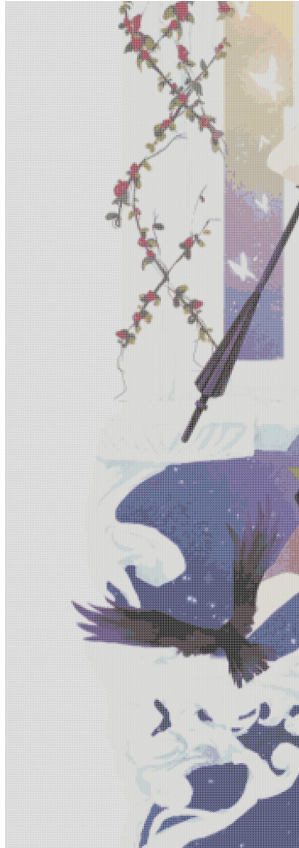
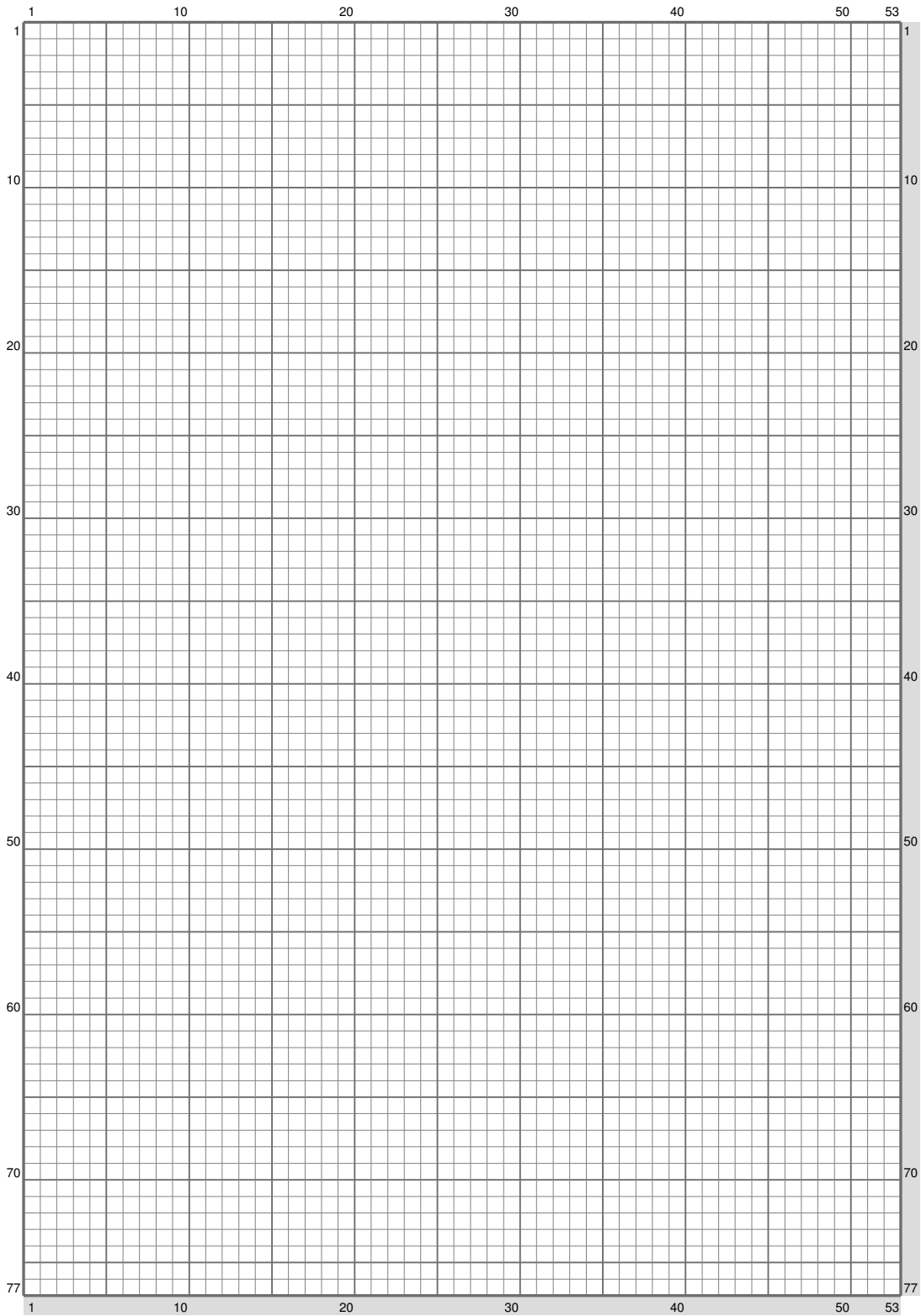


## ESM Part I

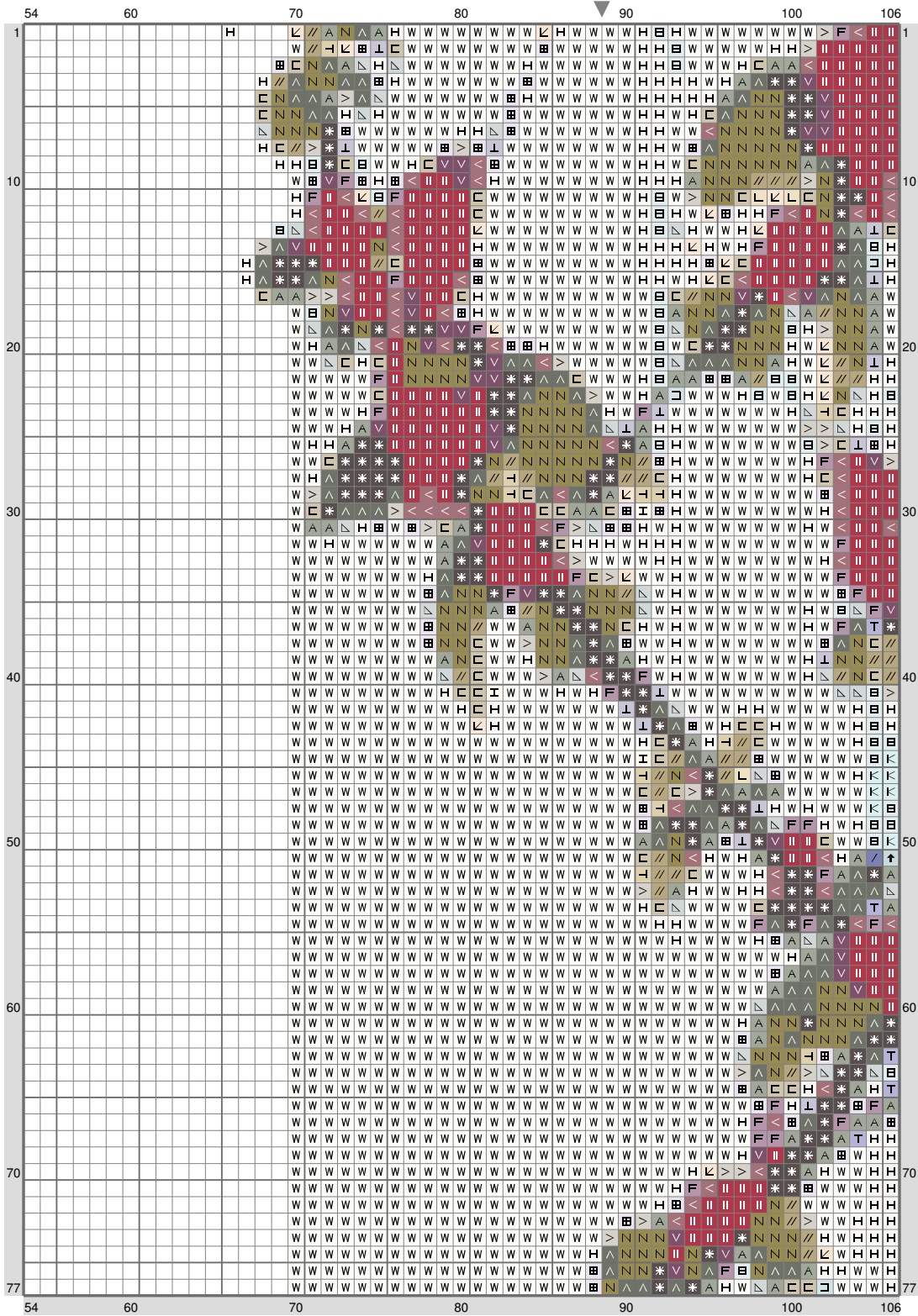


# ESM Part I

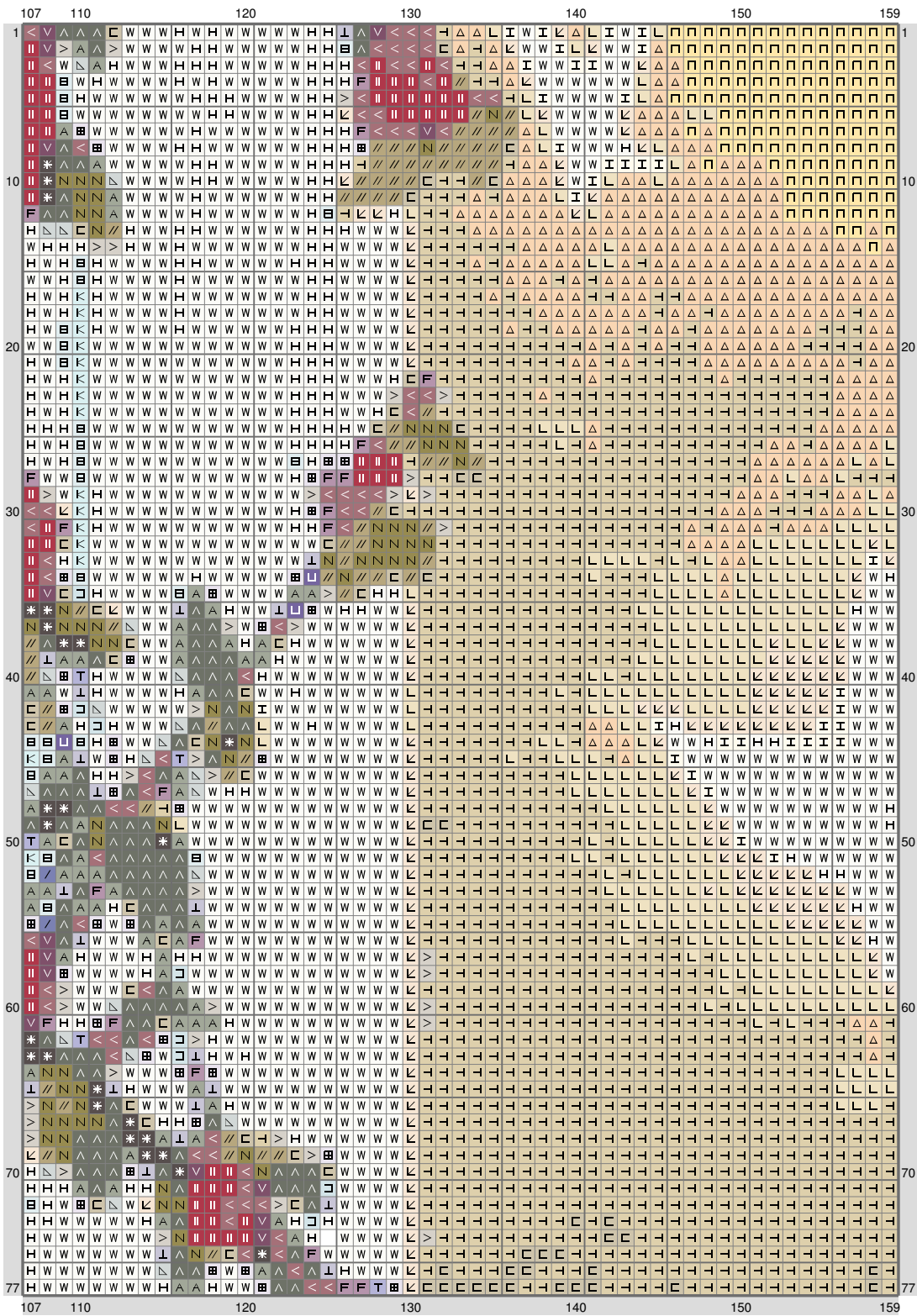


(This chart is printed using KG-Chart LE for Cross Stitch.)

# ESM Part I

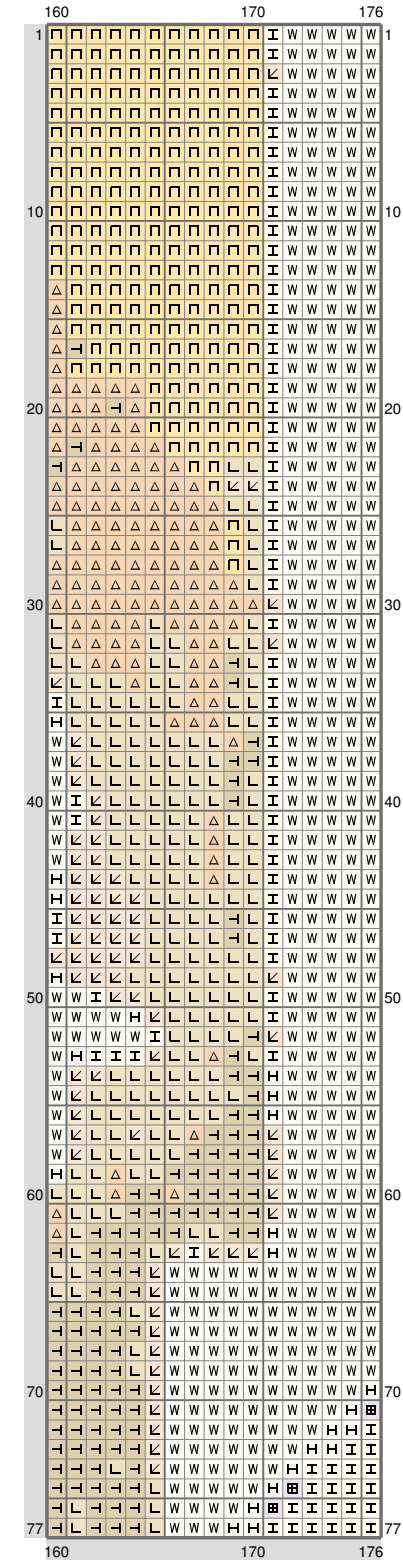


## ESM Part I



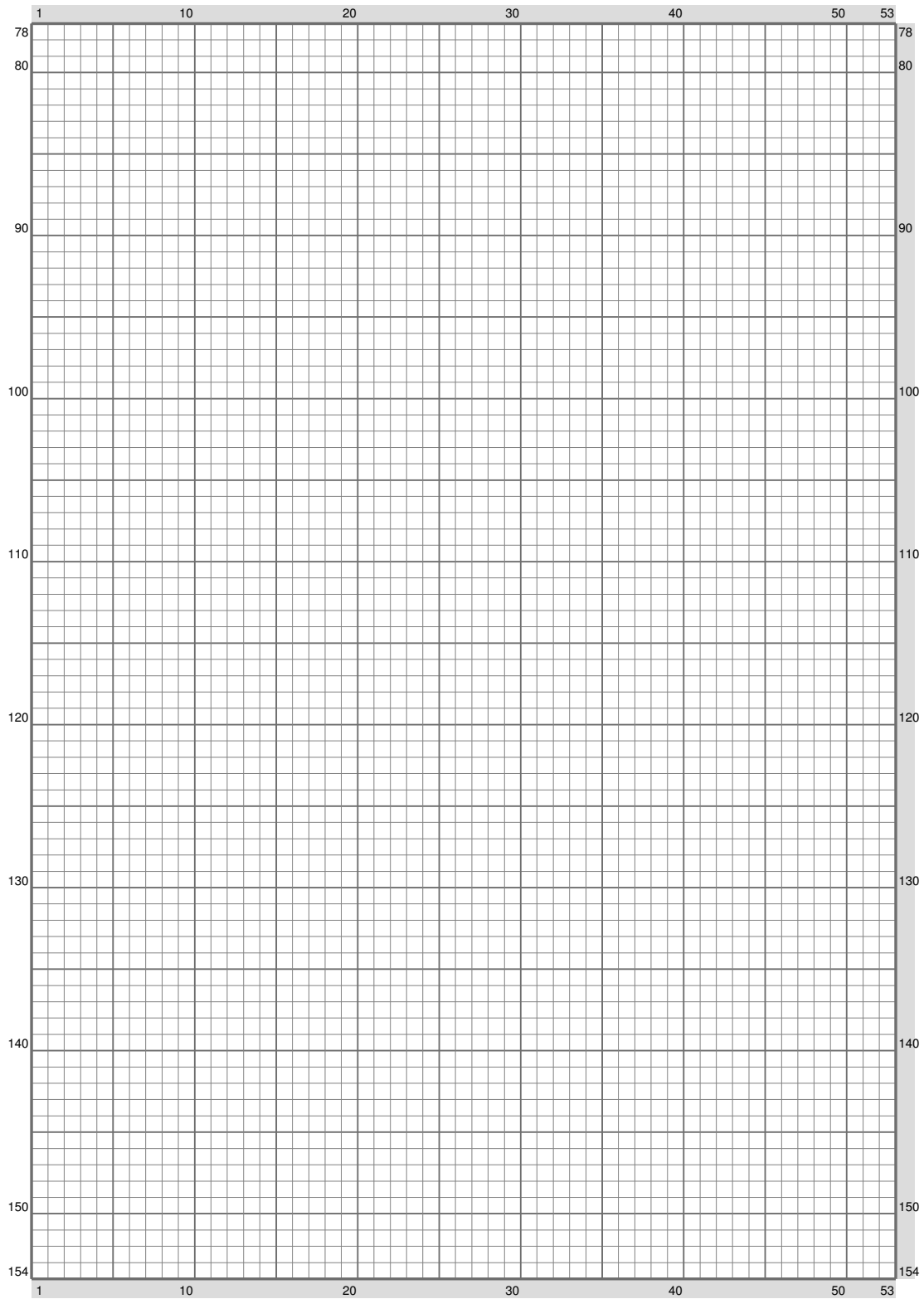
(This chart is printed using KG-Chart LE for Cross Stitch.)

# ESM Part I



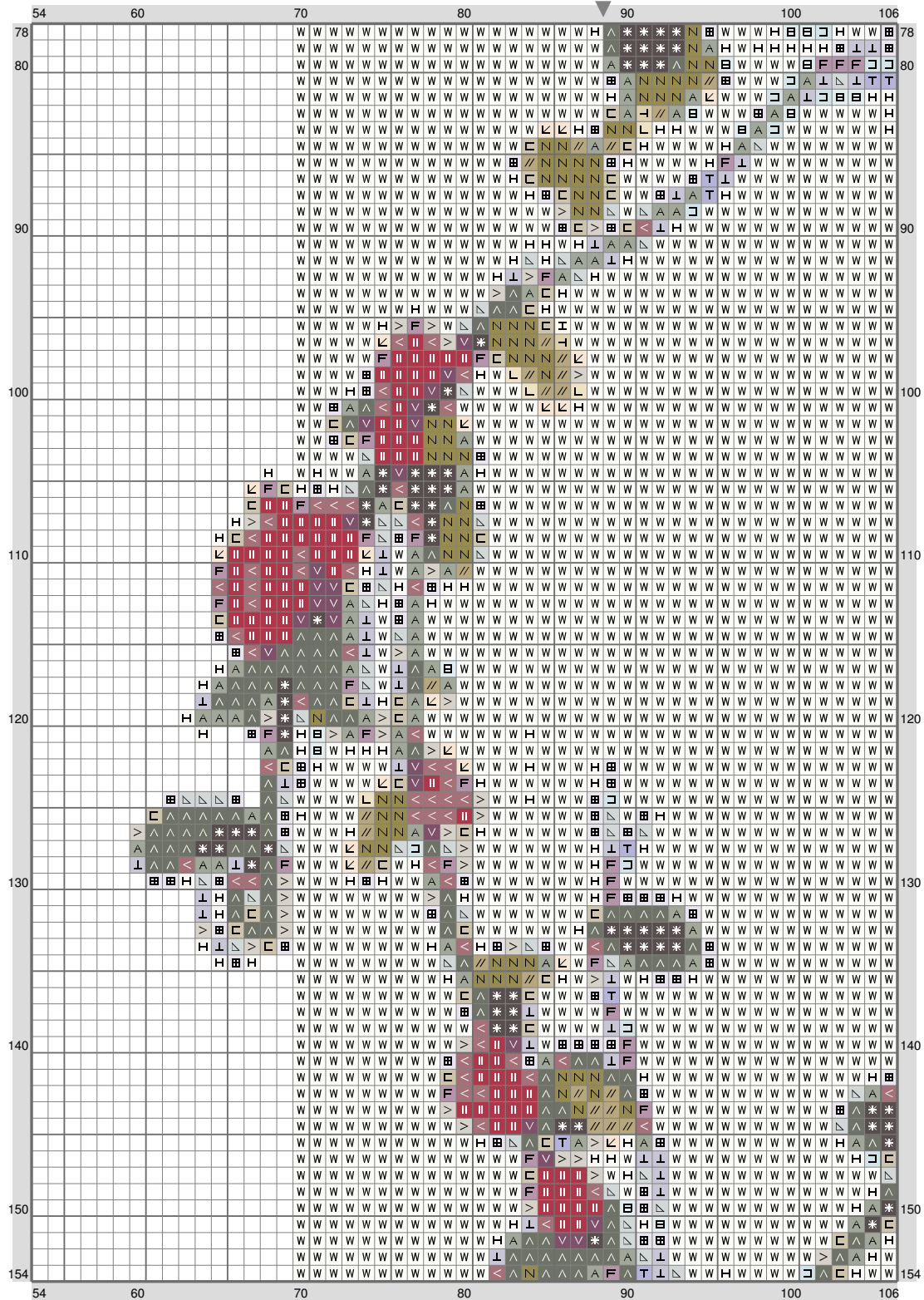
(This chart is printed using KG-Chart LE for Cross Stitch.)

# ESM Part I

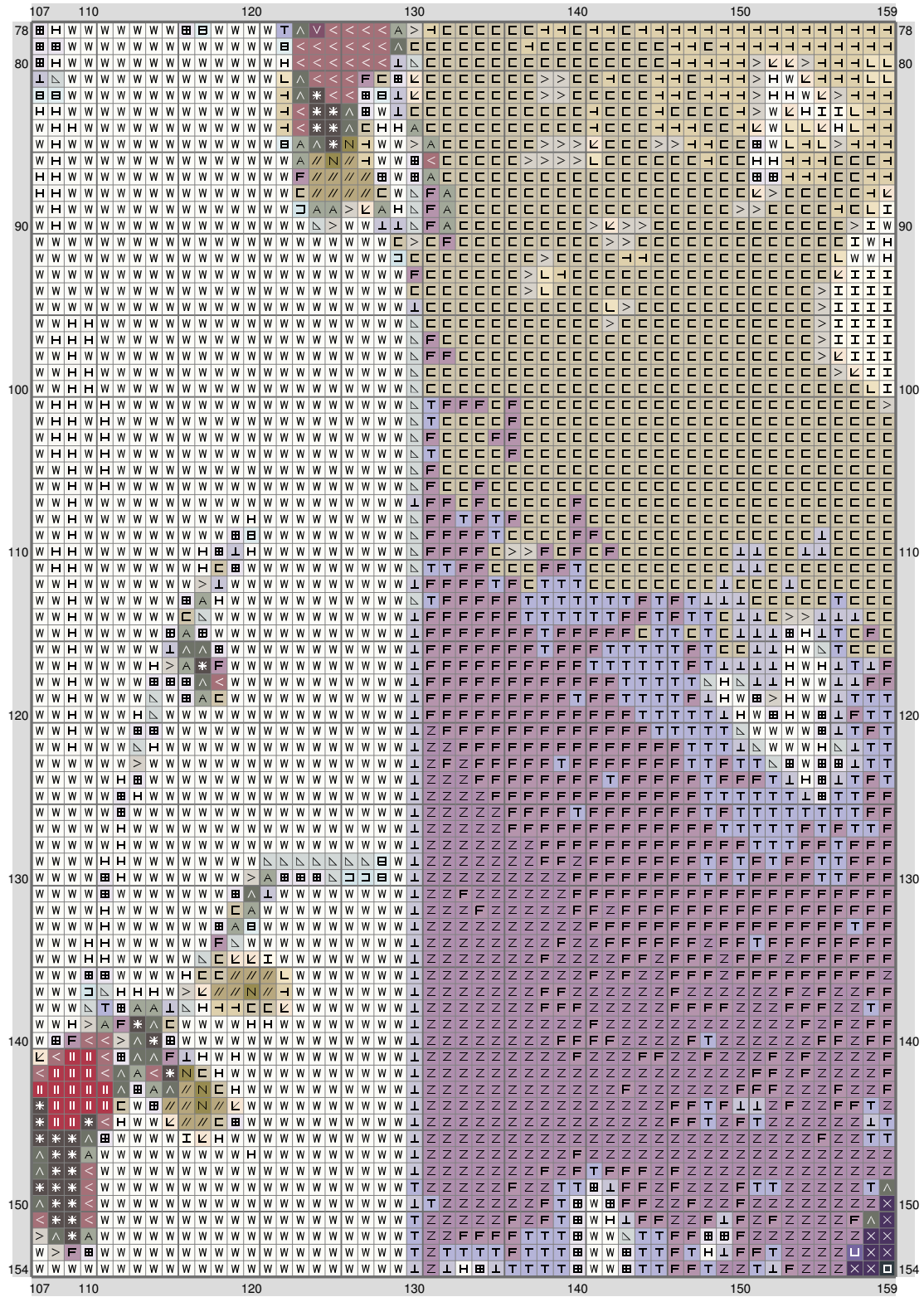


(This chart is printed using KG-Chart LE for Cross Stitch.)

# ESM Part I



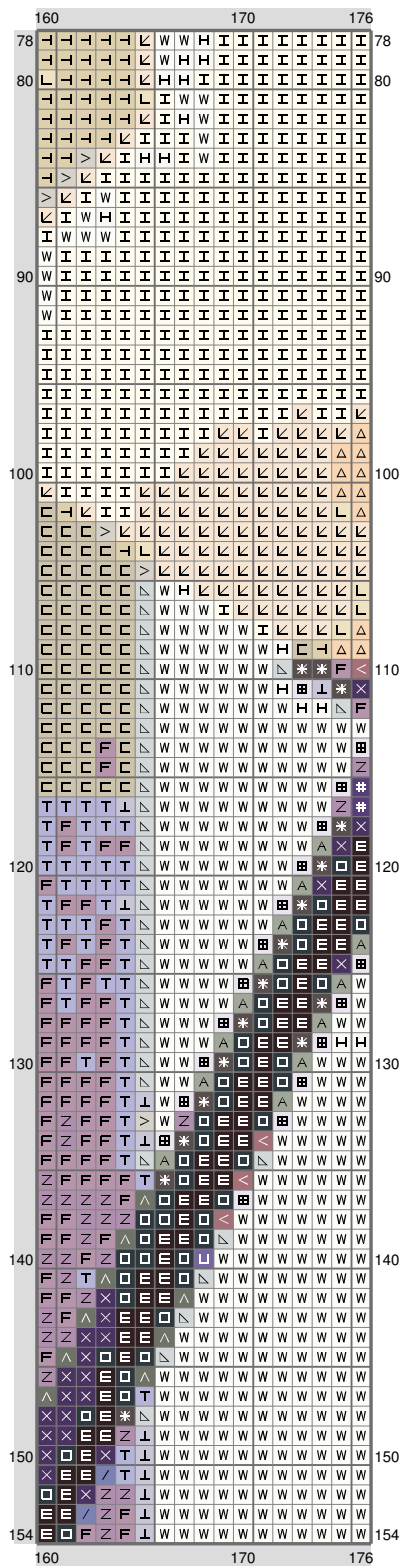
## ESM Part I



(This chart is printed using KG-Chart LE for Cross Stitch.)

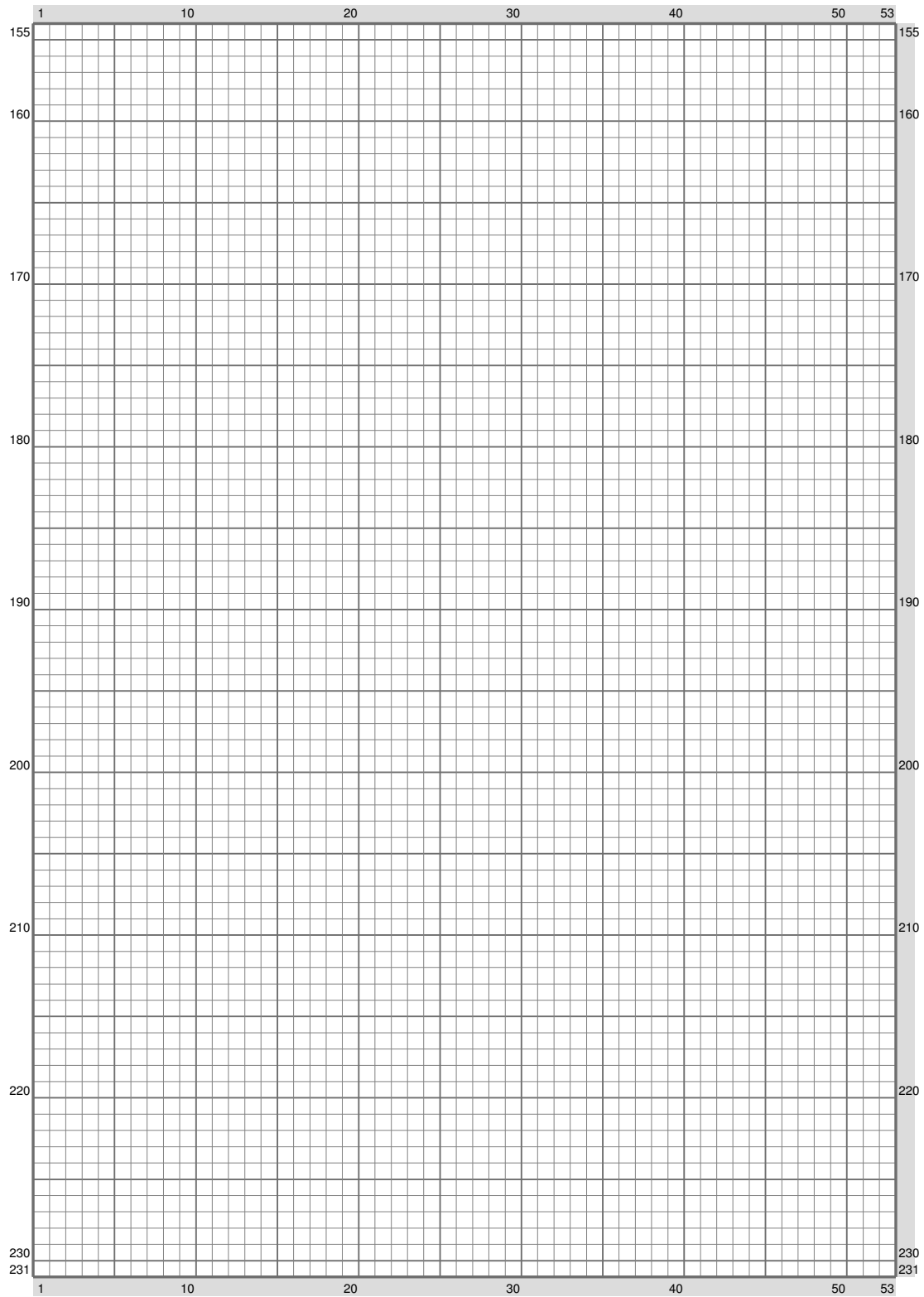


## ESM Part I



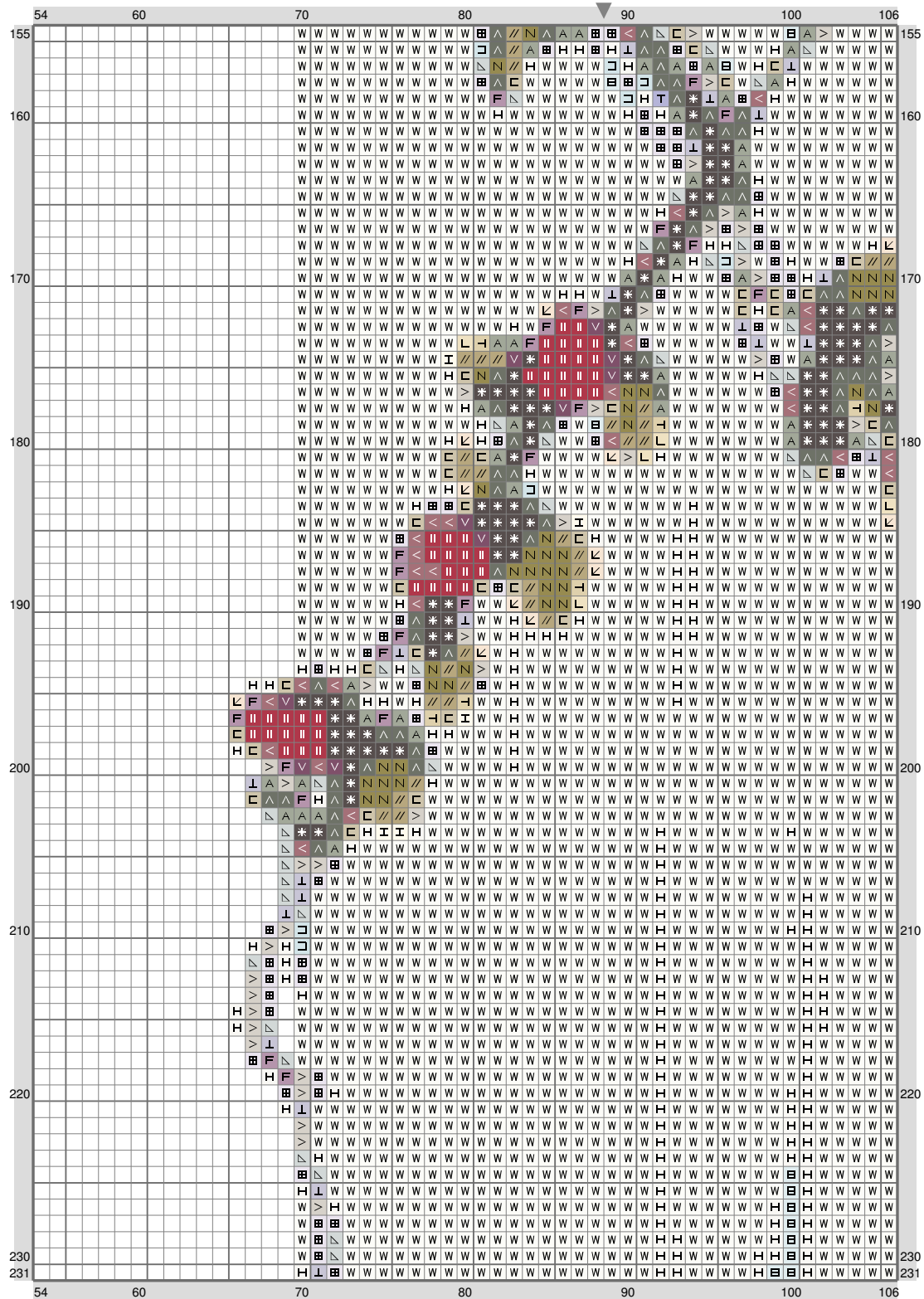
(This chart is printed using KG-Chart LE for Cross Stitch.

# ESM Part I



(This chart is printed using KG-Chart LE for Cross Stitch.)

# ESM Part I



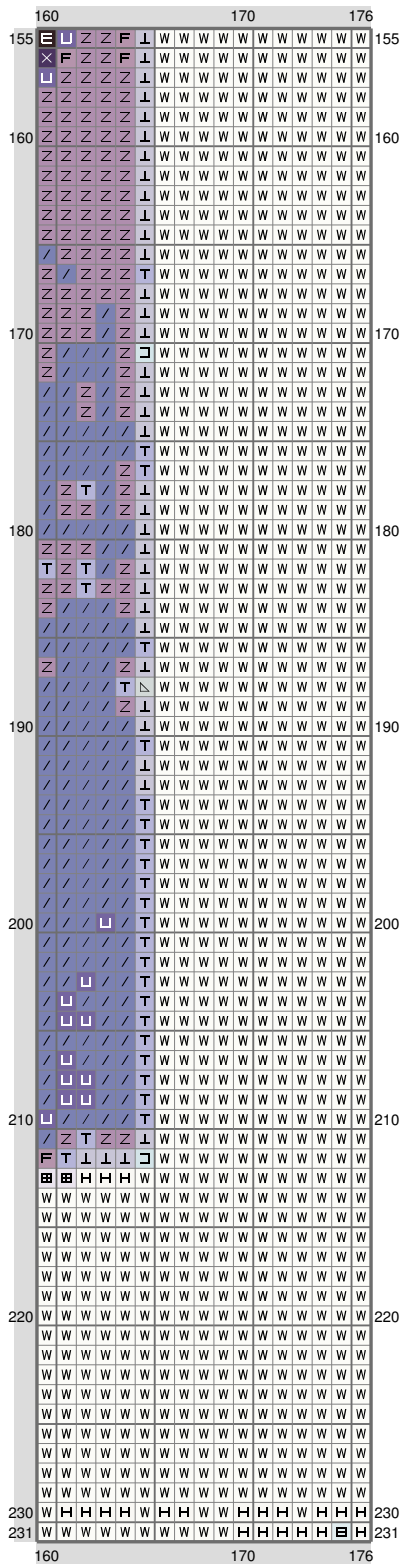
(This chart is printed using KG-Chart LE for Cross Stitch.)

# ESM Part I



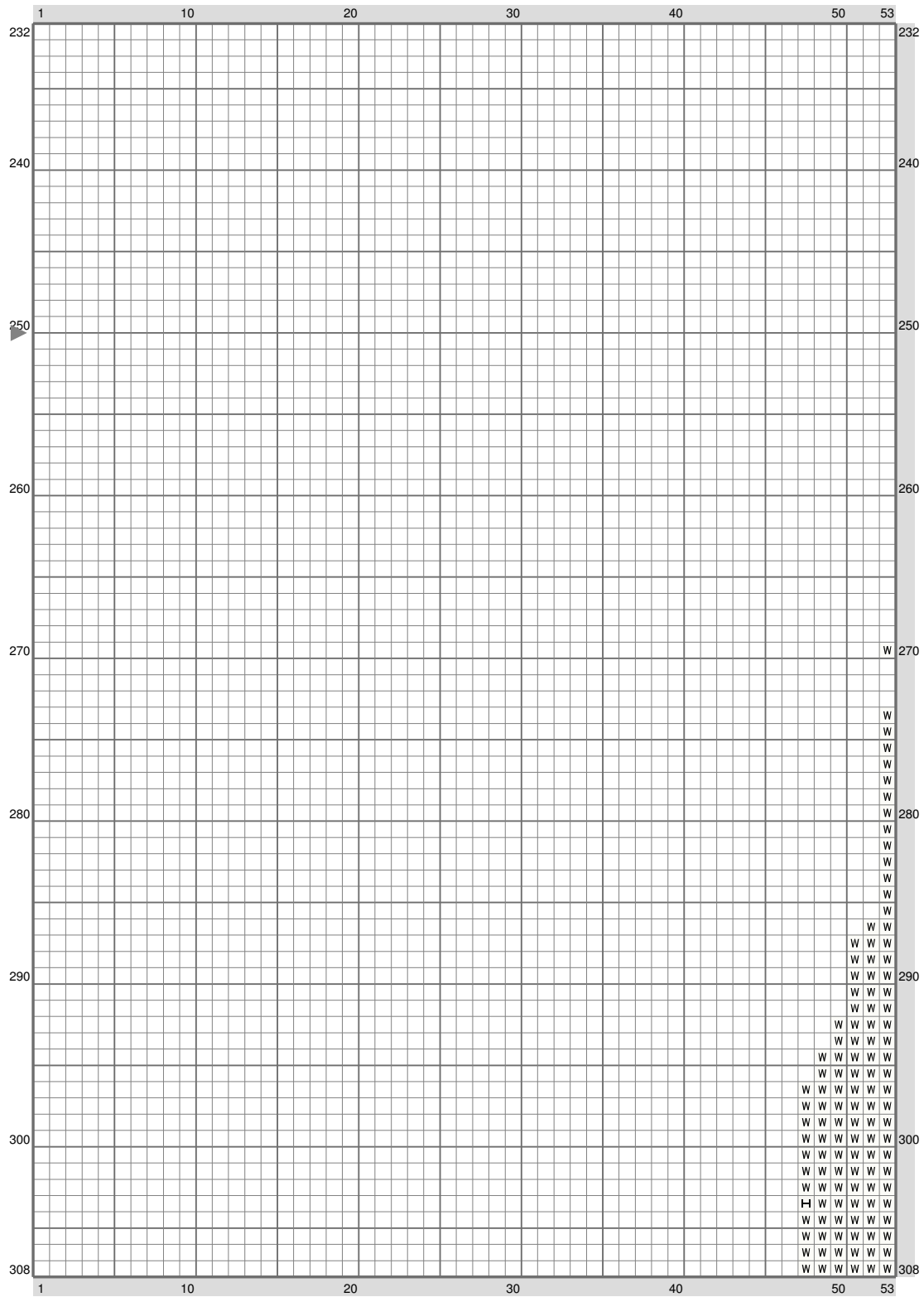
(This chart is printed using KG-Chart LE for Cross Stitch.)

## ESM Part I



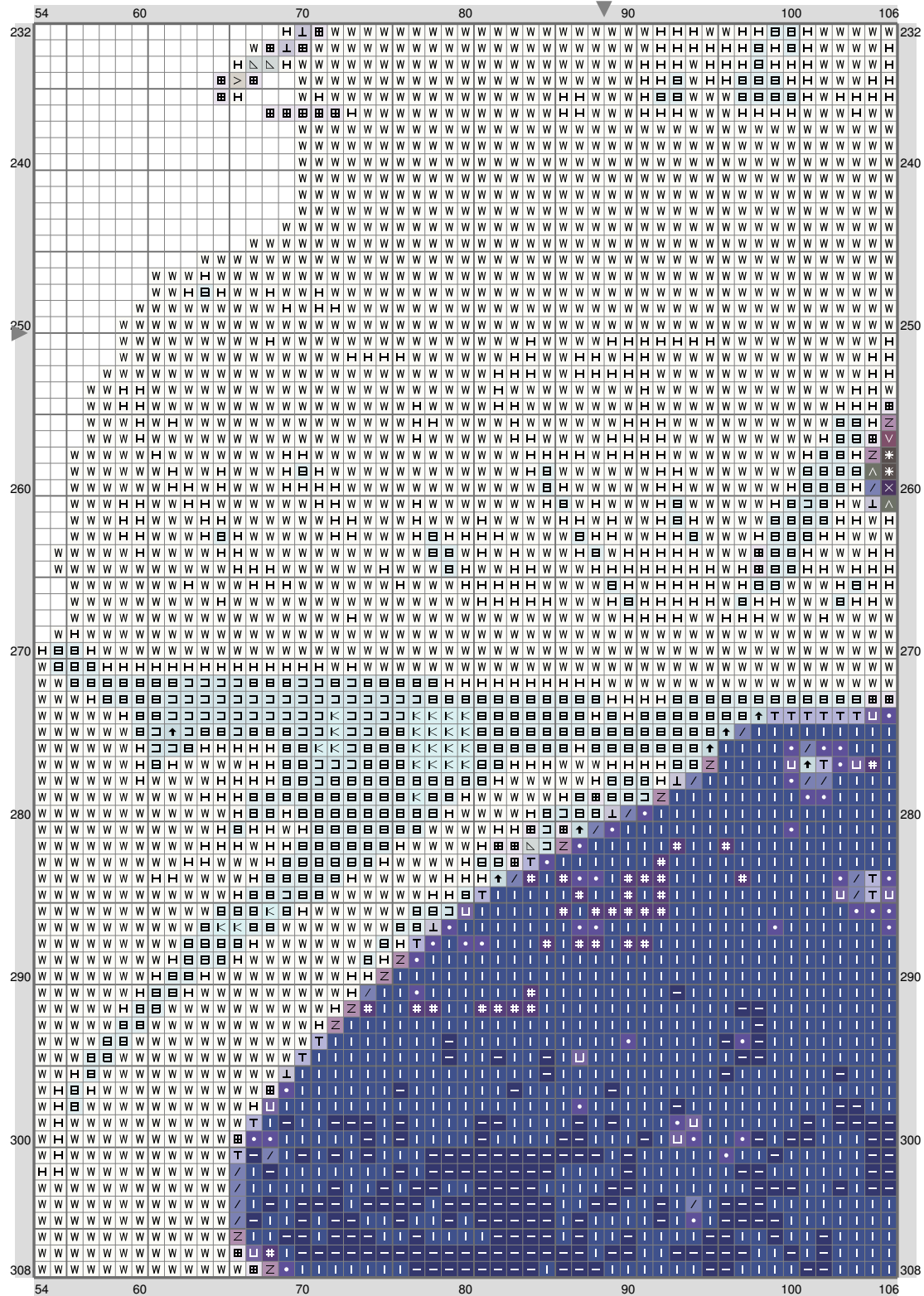
(This chart is printed using KG-Chart LE for Cross Stitch.

# ESM Part I

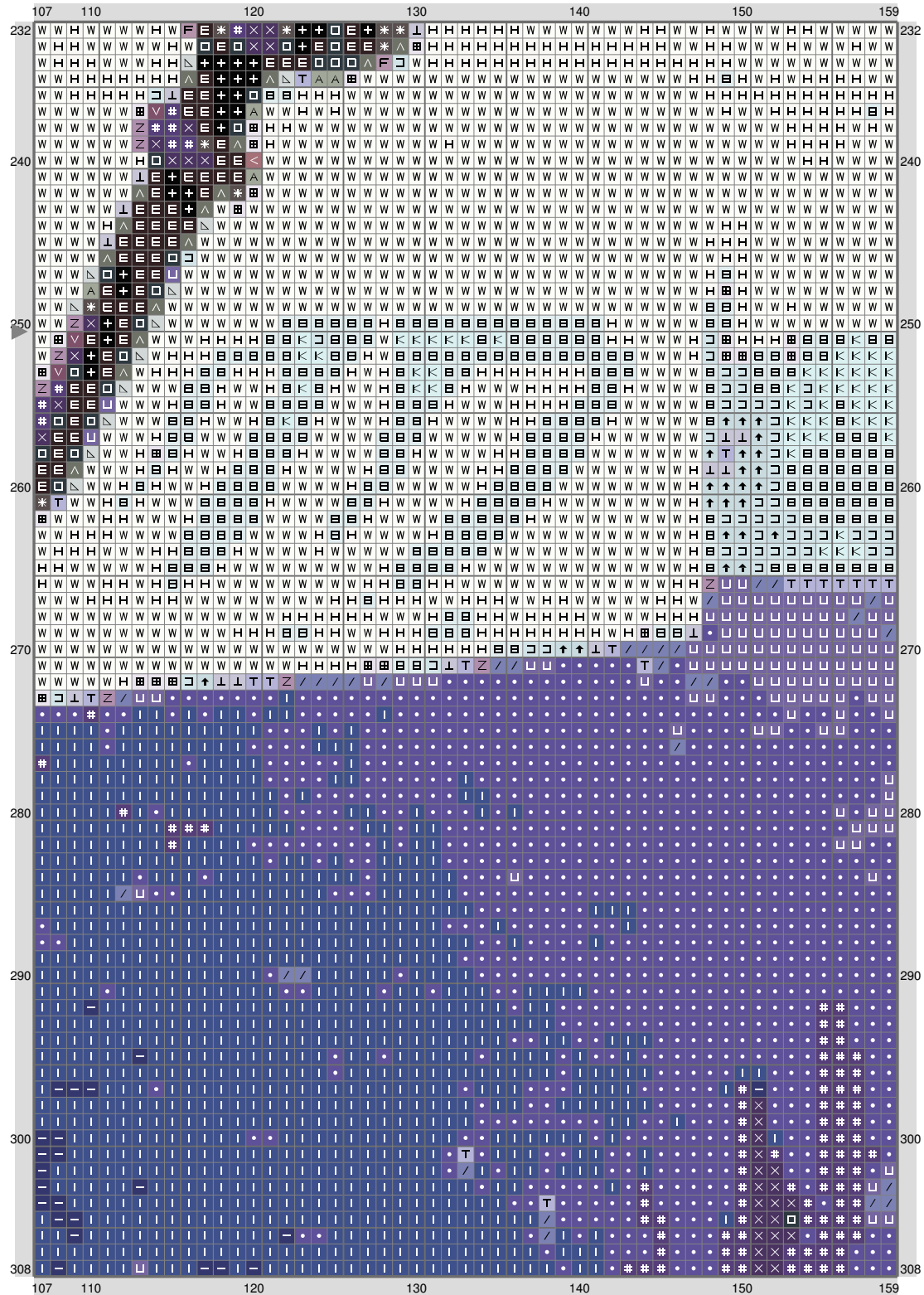


(This chart is printed using KG-Chart LE for Cross Stitch.)

# ESM Part I



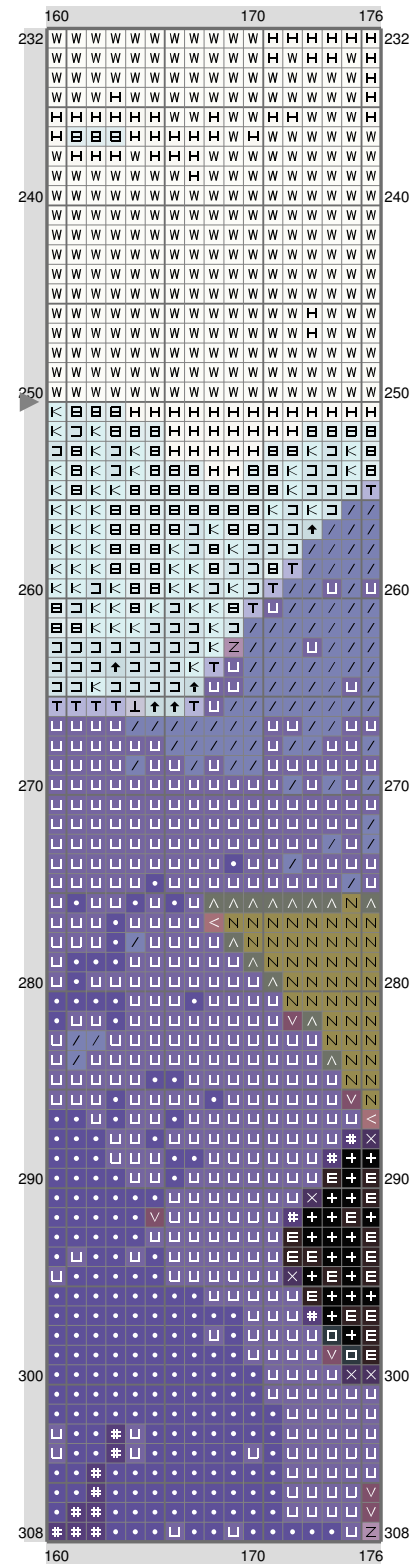
# ESM Part I



(This chart is printed using KG-Chart LE for Cross Stitch.)

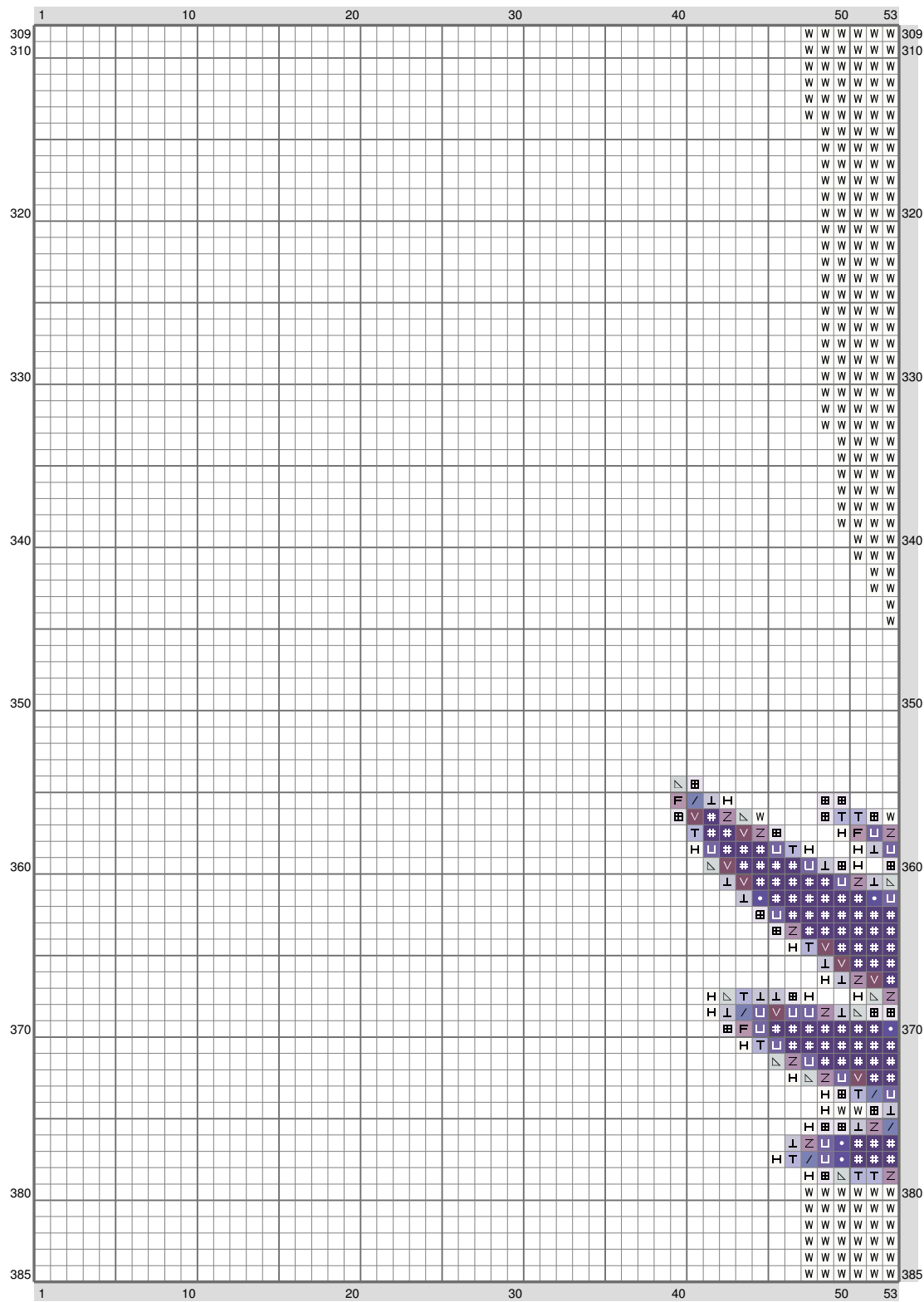


# ESM Part I



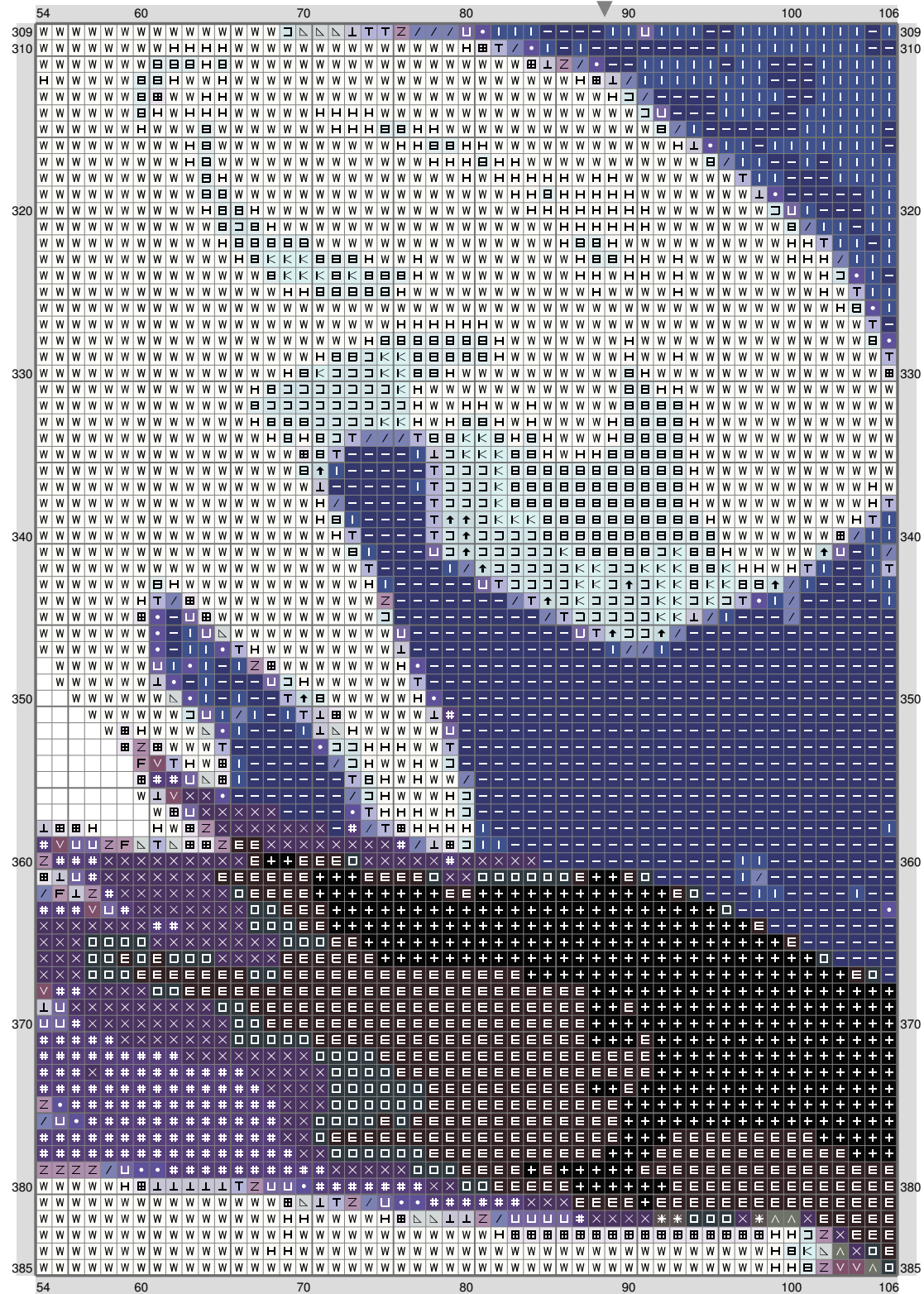
(This chart is printed using KG-Chart LE for Cross Stitch.)

## ESM Part I



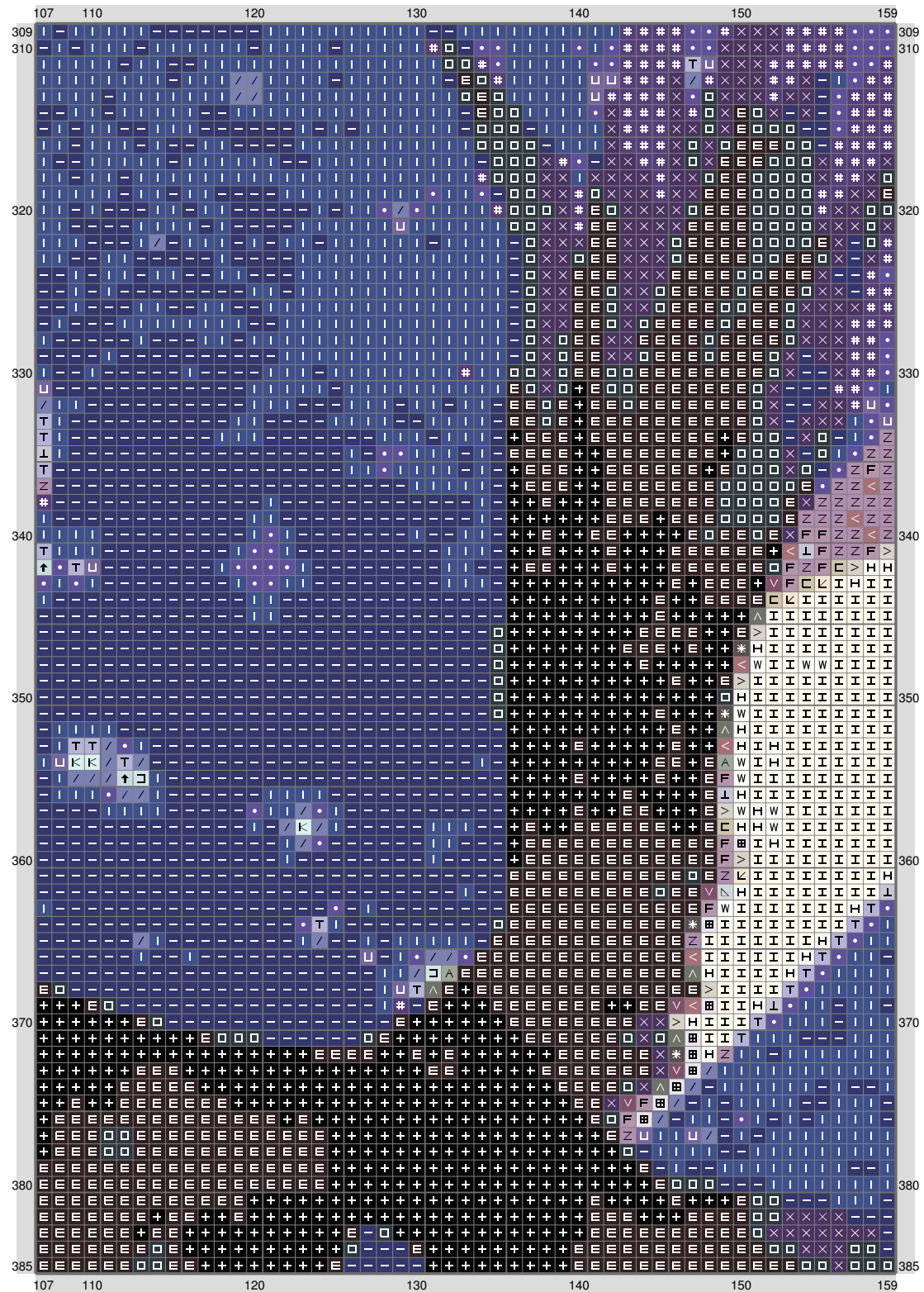
(This chart is printed using KG-Chart LE for Cross Stitch.)

# ESM Part I



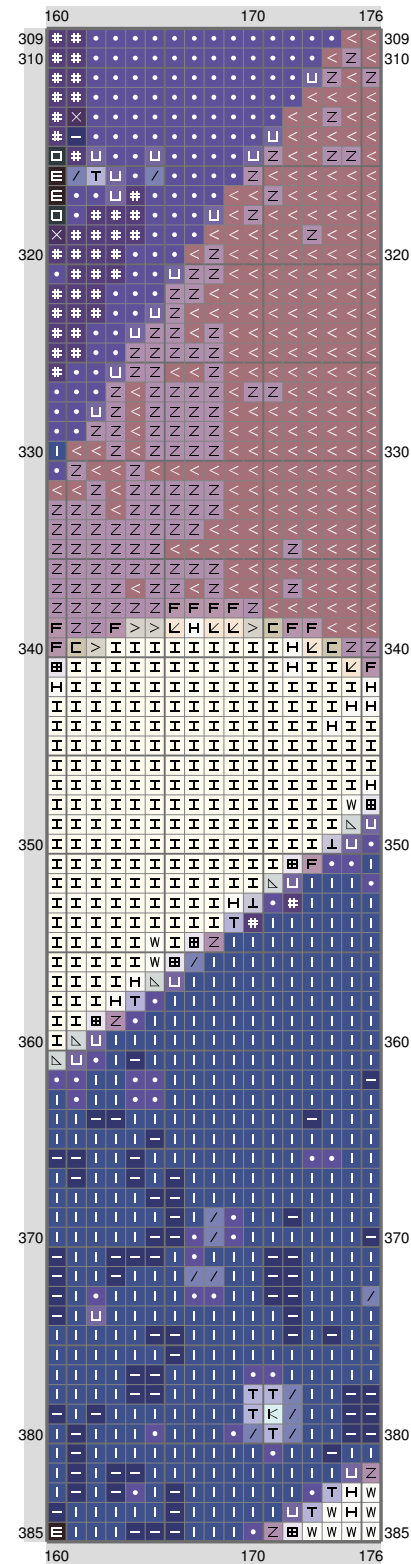
(This chart is printed using KG-Chart LE for Cross Stitch.)

# ESM Part I



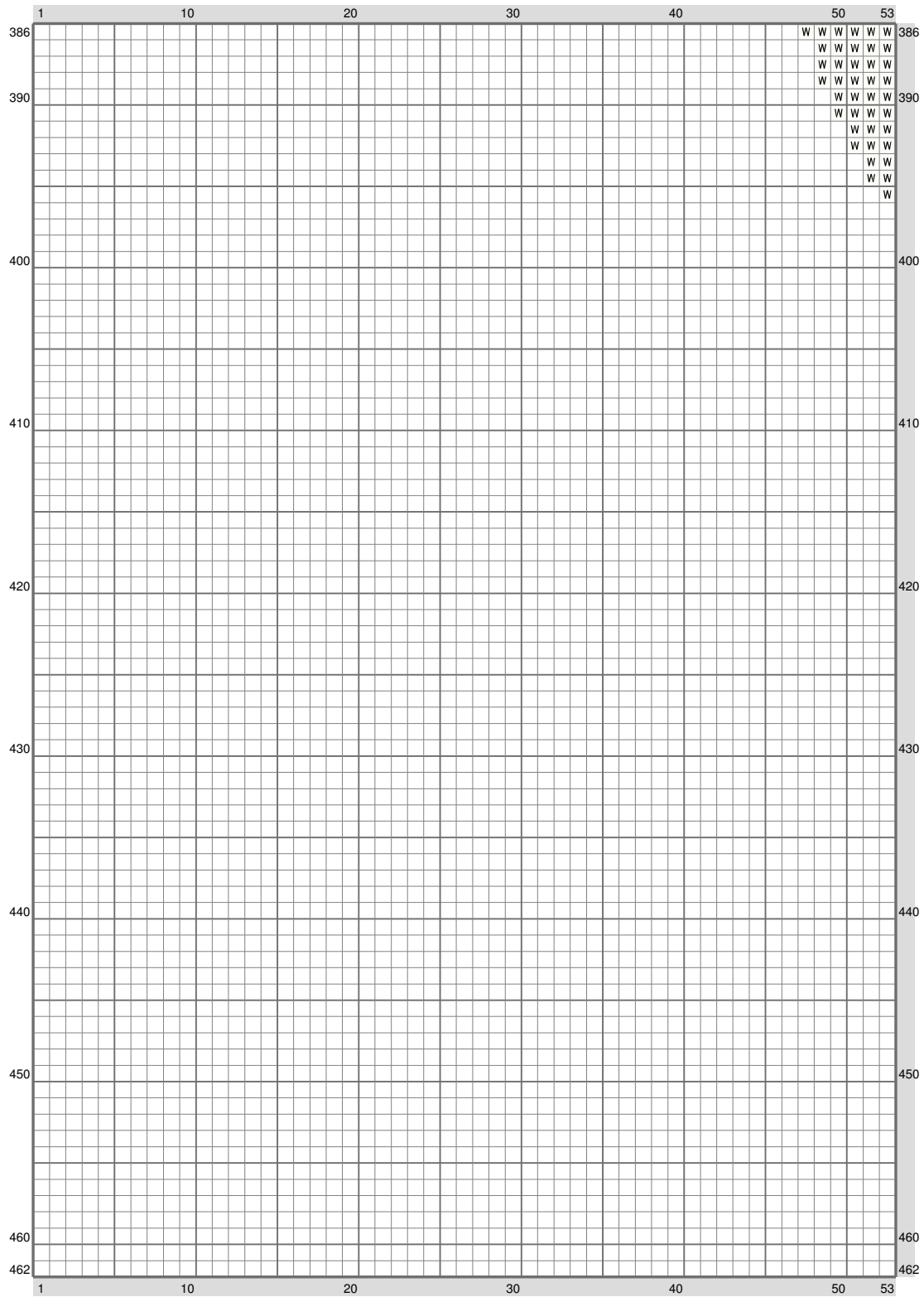
(This chart is printed using KG-Chart LE for Cross Stitch.)

## ESM Part I



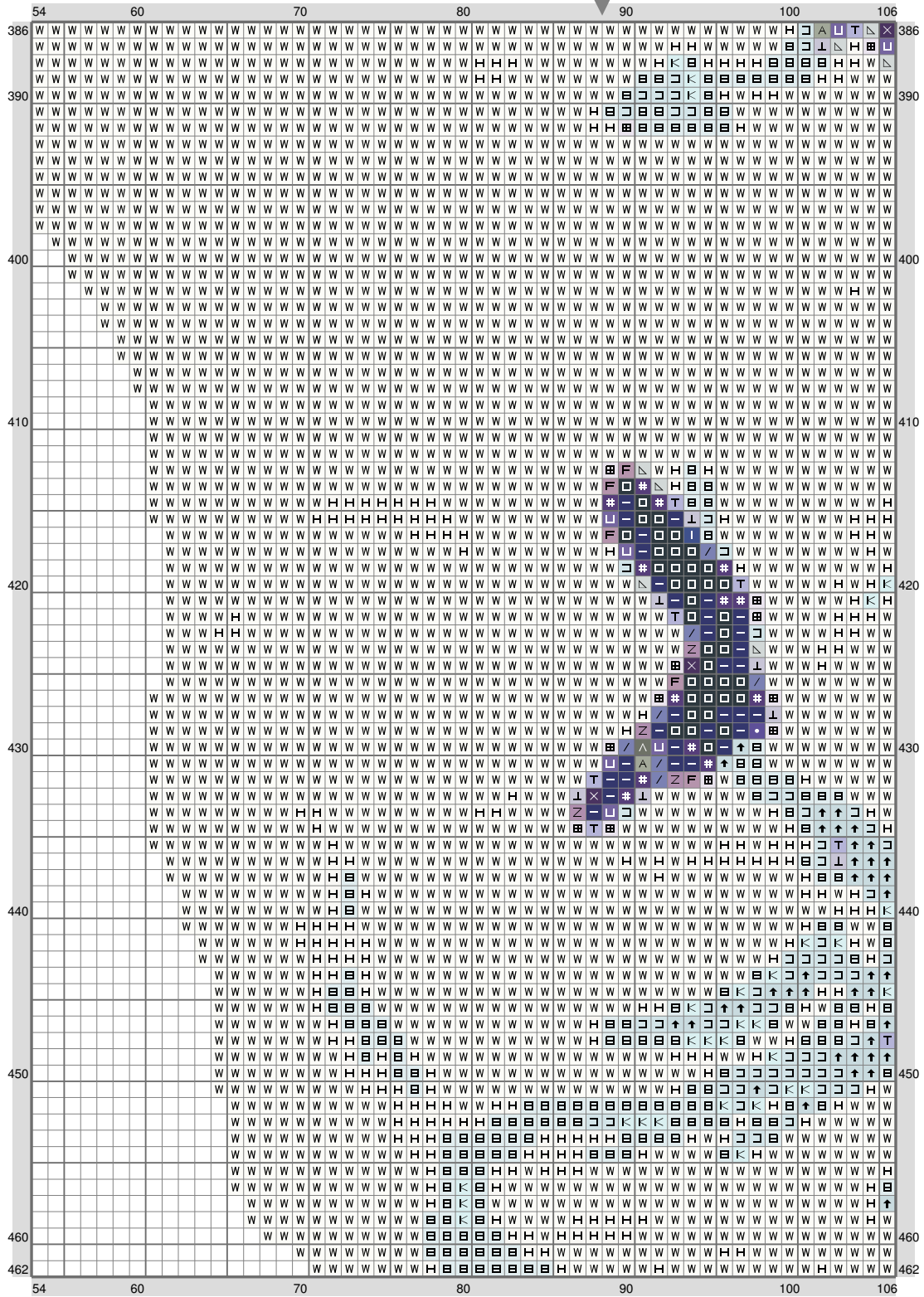
(This chart is printed using KG-Chart LE for Cross Stitch.)

# ESM Part I



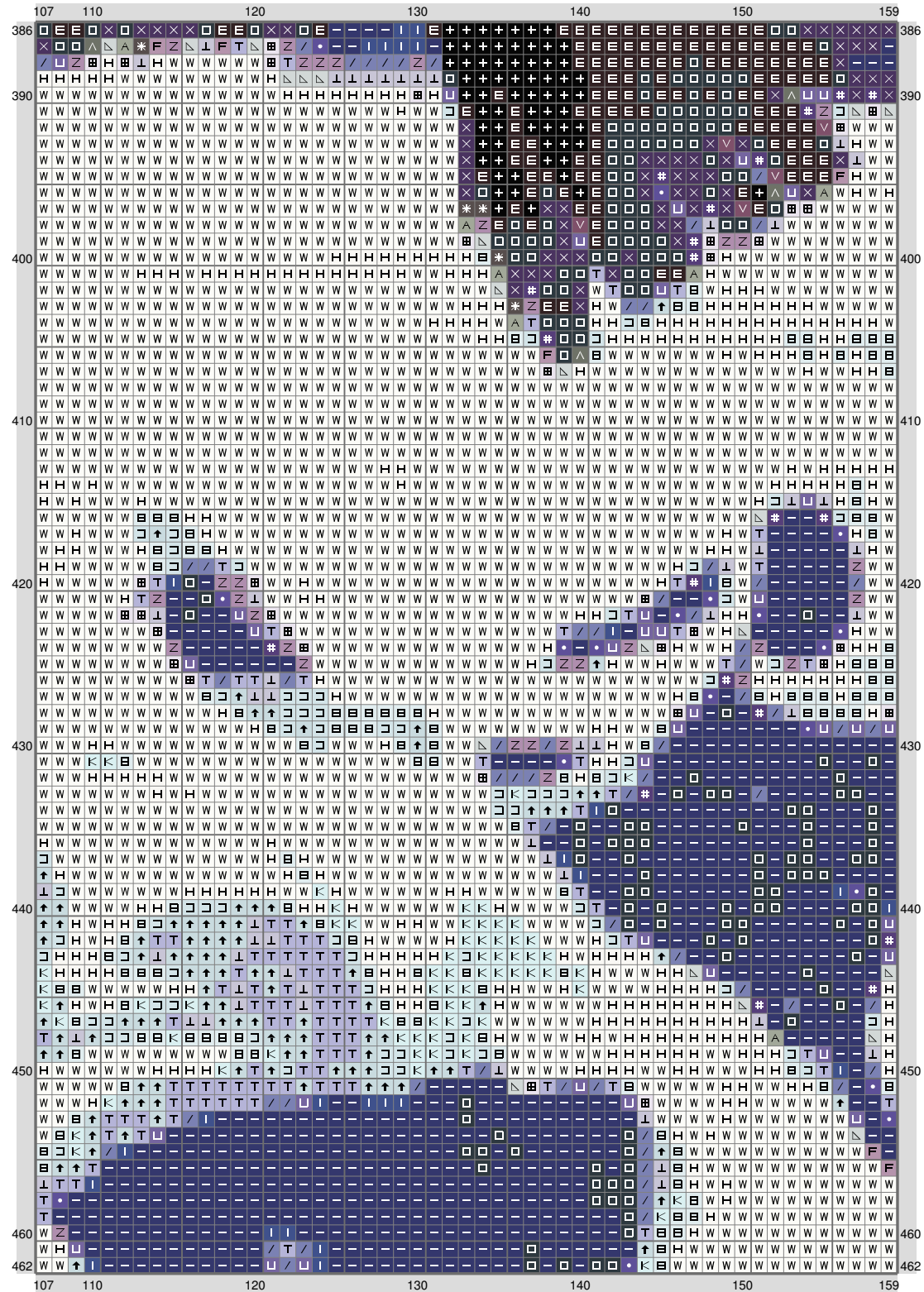
(This chart is printed using KG-Chart LE for Cross Stitch.)

## ESM Part I



(This chart is printed using KG-Chart LE for Cross Stitch.)

# ESM Part I



(This chart is printed using KG-Chart LE for Cross Stitch.)

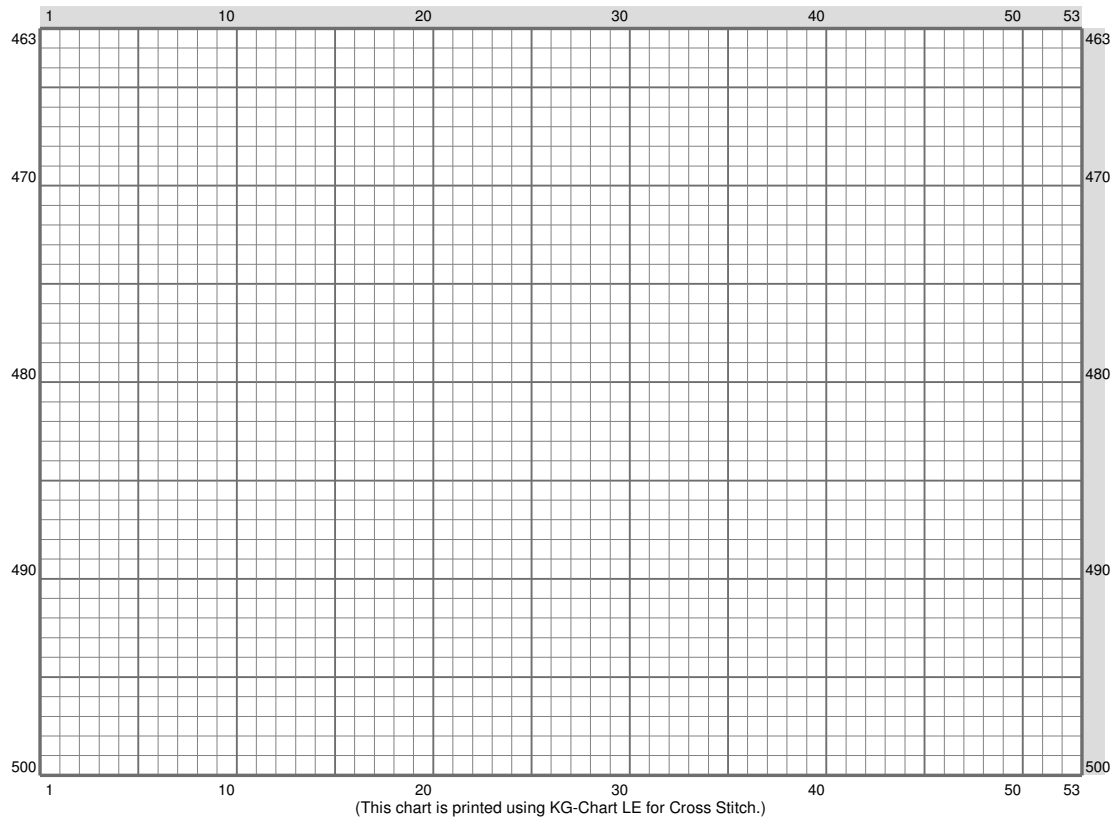


## ESM Part I

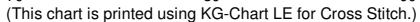
[illegible]

(This chart is printed using KG-Chart LE for Cross Stitch.

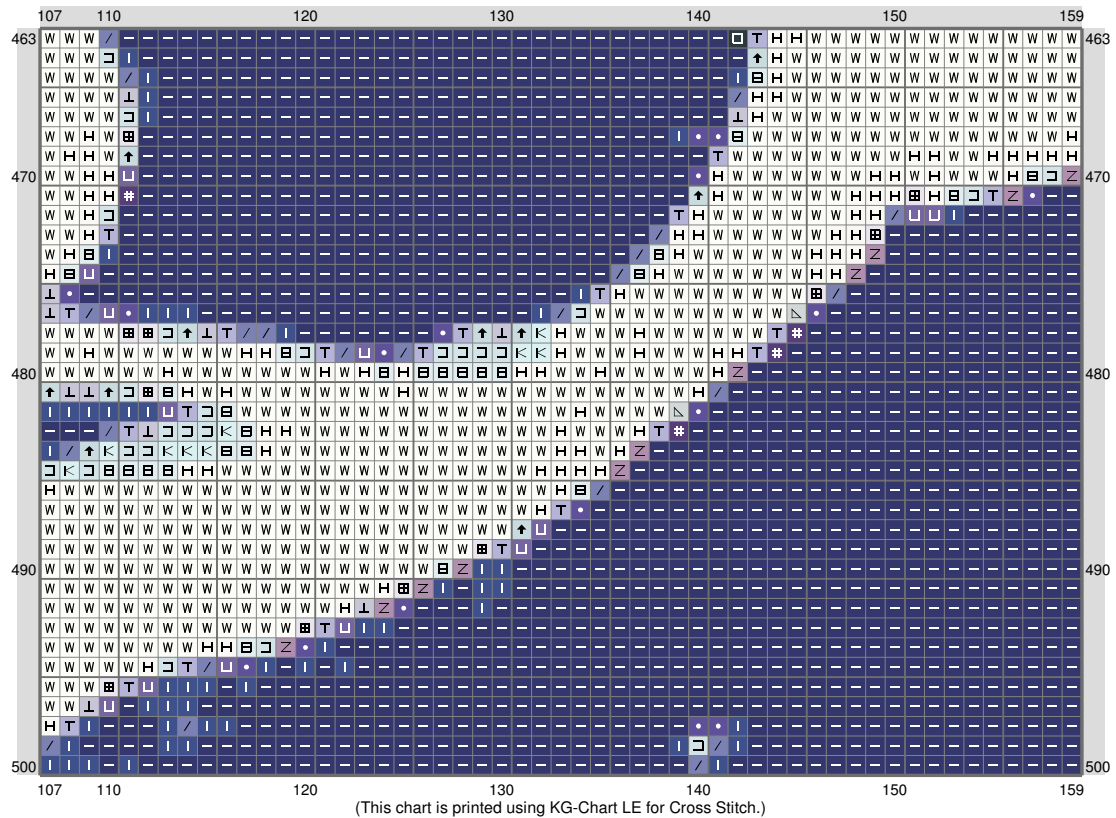
## ESM Part I



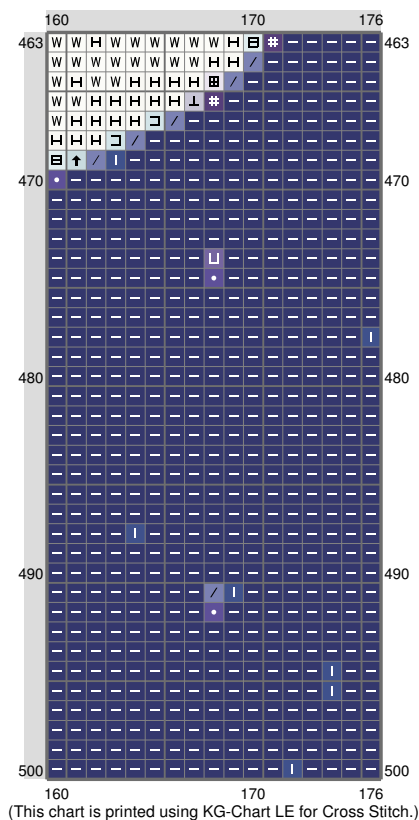
## ESM Part I



# ESM Part I



## ESM Part I








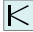
















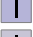
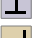

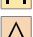





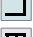






(This chart is printed using KG-Chart LE for Cross Stitch.)

# ESM Part I

Stitch Count: 176w x 500h  
 Finished Size: 22.35 cm x 63.5 cm (20 ct./inch)  
 Cloth: Aida  
 Cloth's Color: White  
 # of colors: 38 Colors

Color Table (DMC)

Cross Stitch				
	310	(1134 ct)		3756 (1448 ct)
	939	(1580 ct)		3865 (3246 ct)
	500	(746 ct)		712 (883 ct)
	311	(4610 ct)		3841 (340 ct)
	336	(617 ct)		BLANC (22970 ct)
	844	(486 ct)		
	824	(3140 ct)		
	803	(612 ct)		
	158	(1413 ct)		
	3740	(167 ct)		
	645	(537 ct)		
	355	(441 ct)		
	3860	(524 ct)		
	3807	(941 ct)		
	793	(1090 ct)		
	3042	(1082 ct)		
	3012	(422 ct)		
	372	(208 ct)		
	3022	(343 ct)		
	524	(1086 ct)		
	451	(791 ct)		
	169	(654 ct)		
	318	(468 ct)		
	3047	(1383 ct)		
	744	(357 ct)		
	738	(465 ct)		
	3033	(252 ct)		
	928	(354 ct)		
	677	(548 ct)		
	739	(425 ct)		
	775	(225 ct)		
	3753	(492 ct)		
	762	(603 ct)		