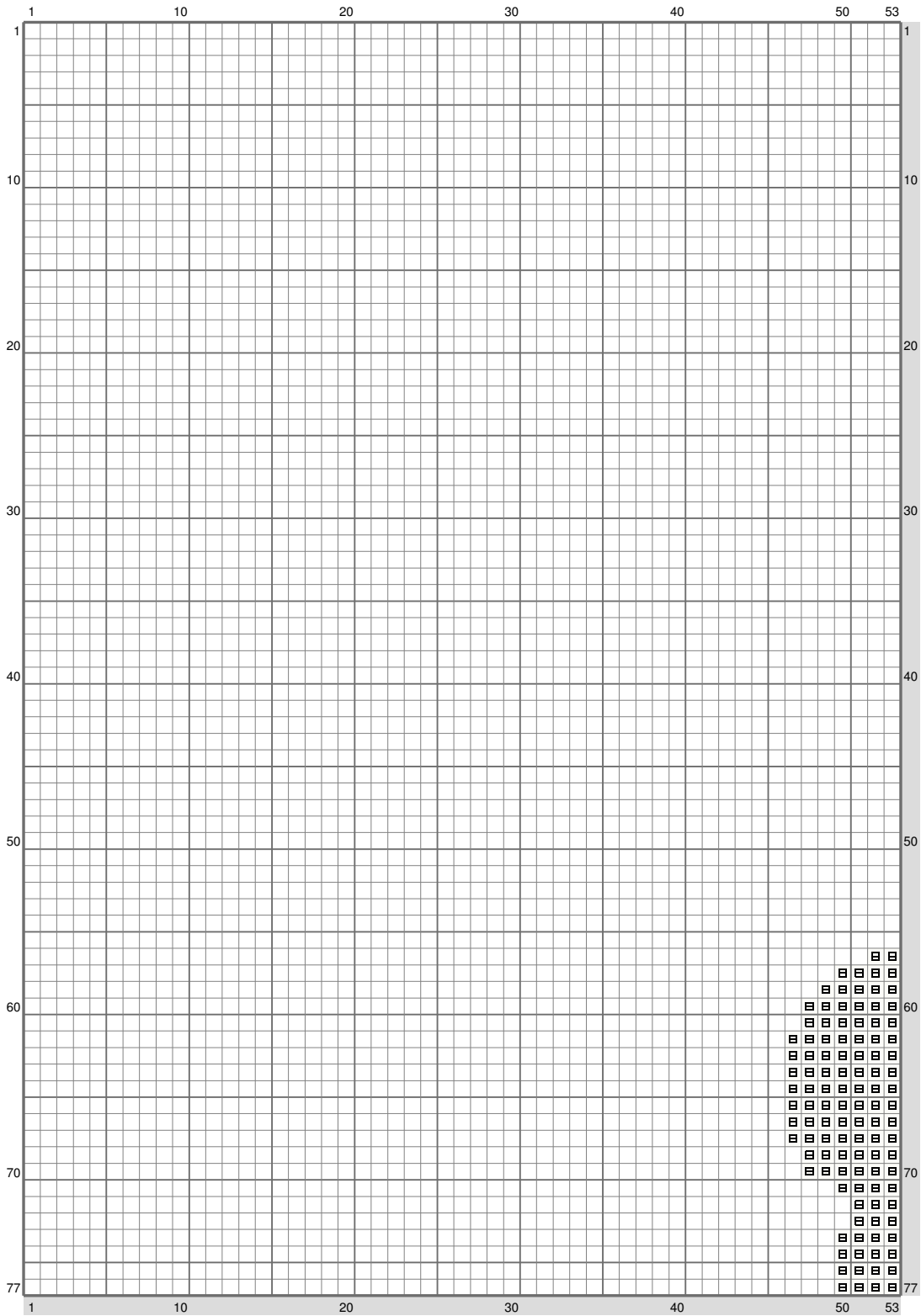


ESM Part E

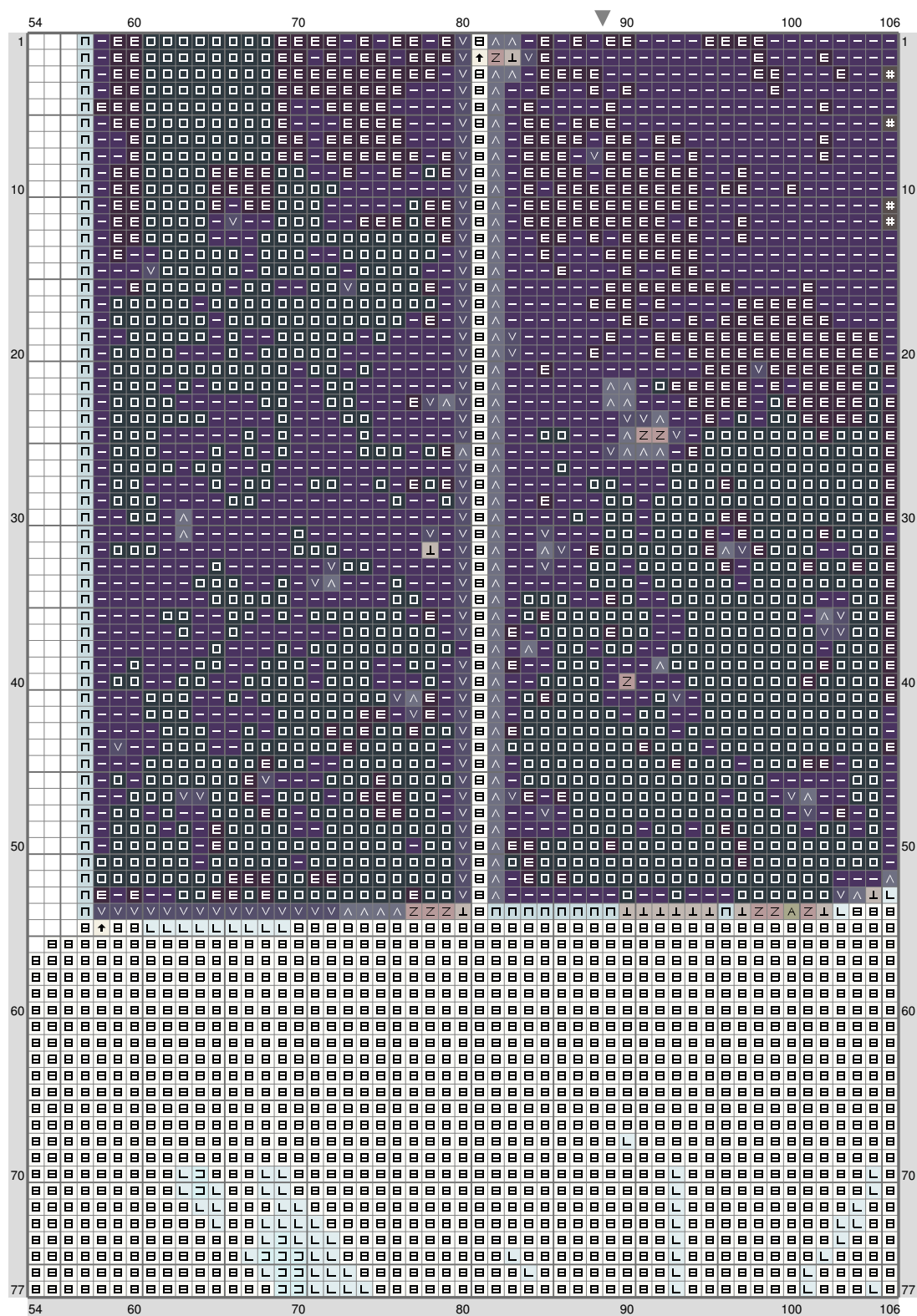


ESM Part E



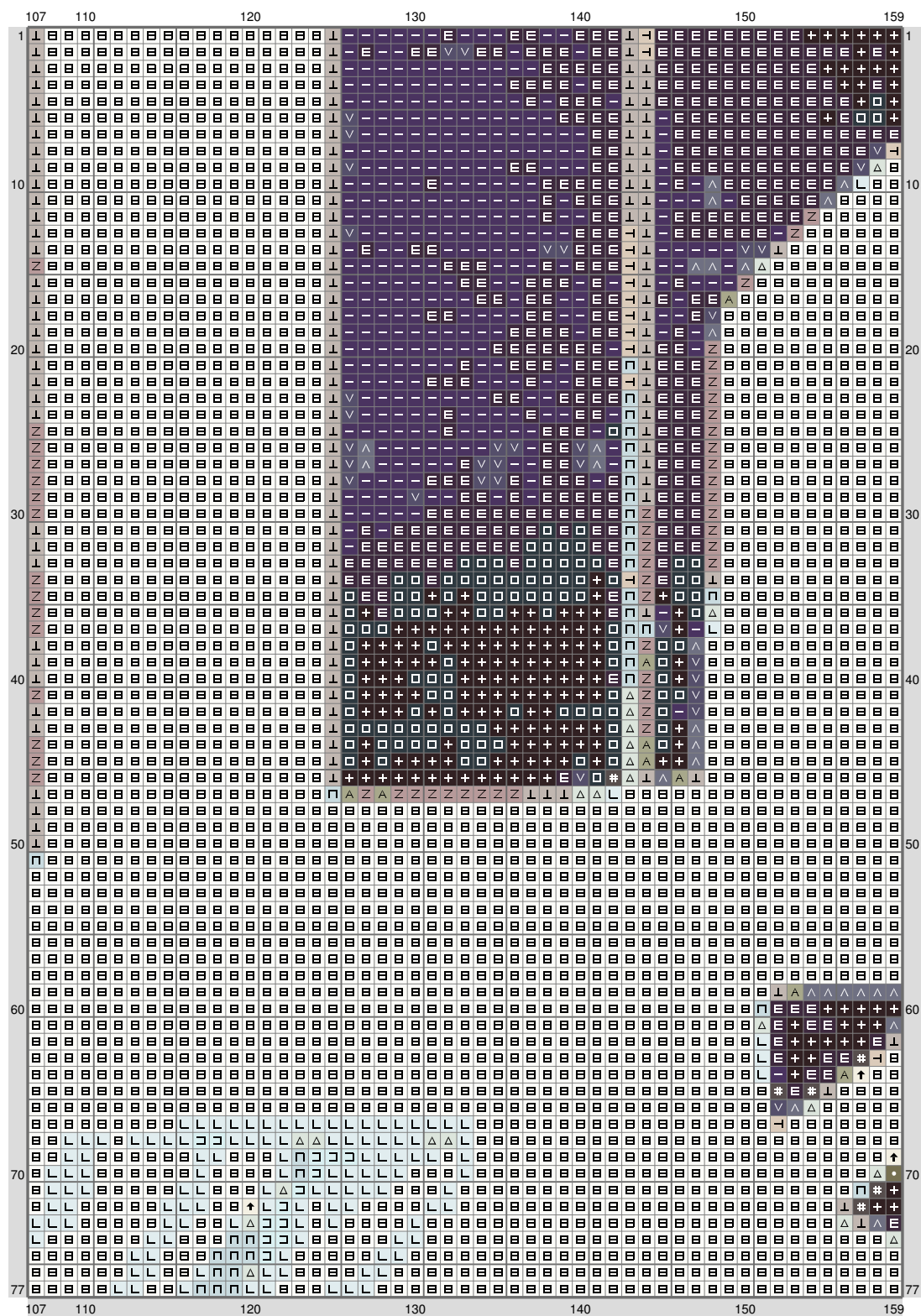
(This chart is printed using KG-Chart LE for Cross Stitch.)

ESM Part E



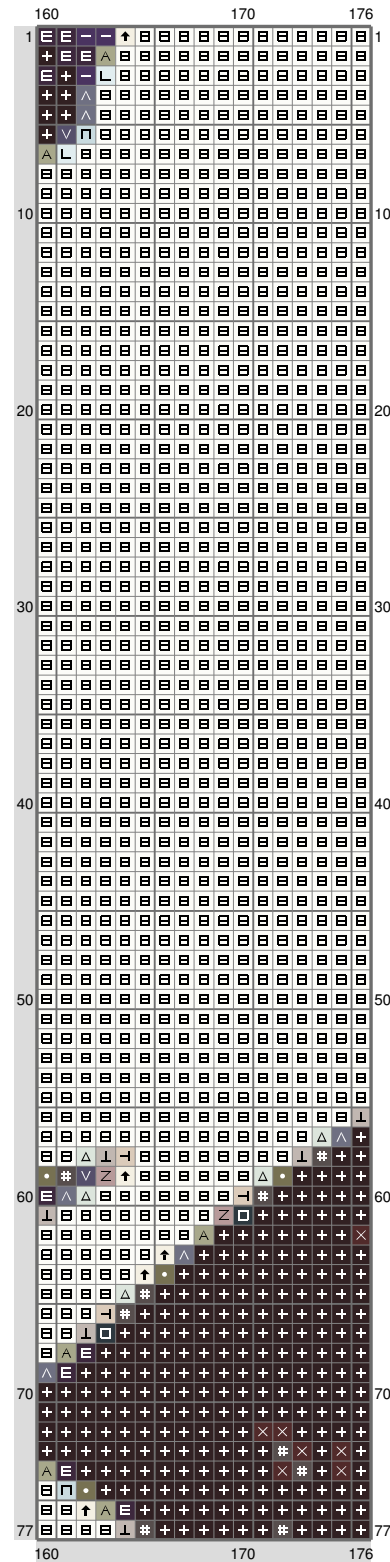
(This chart is printed using KG-Chart LE for Cross Stitch.)

ESM Part E



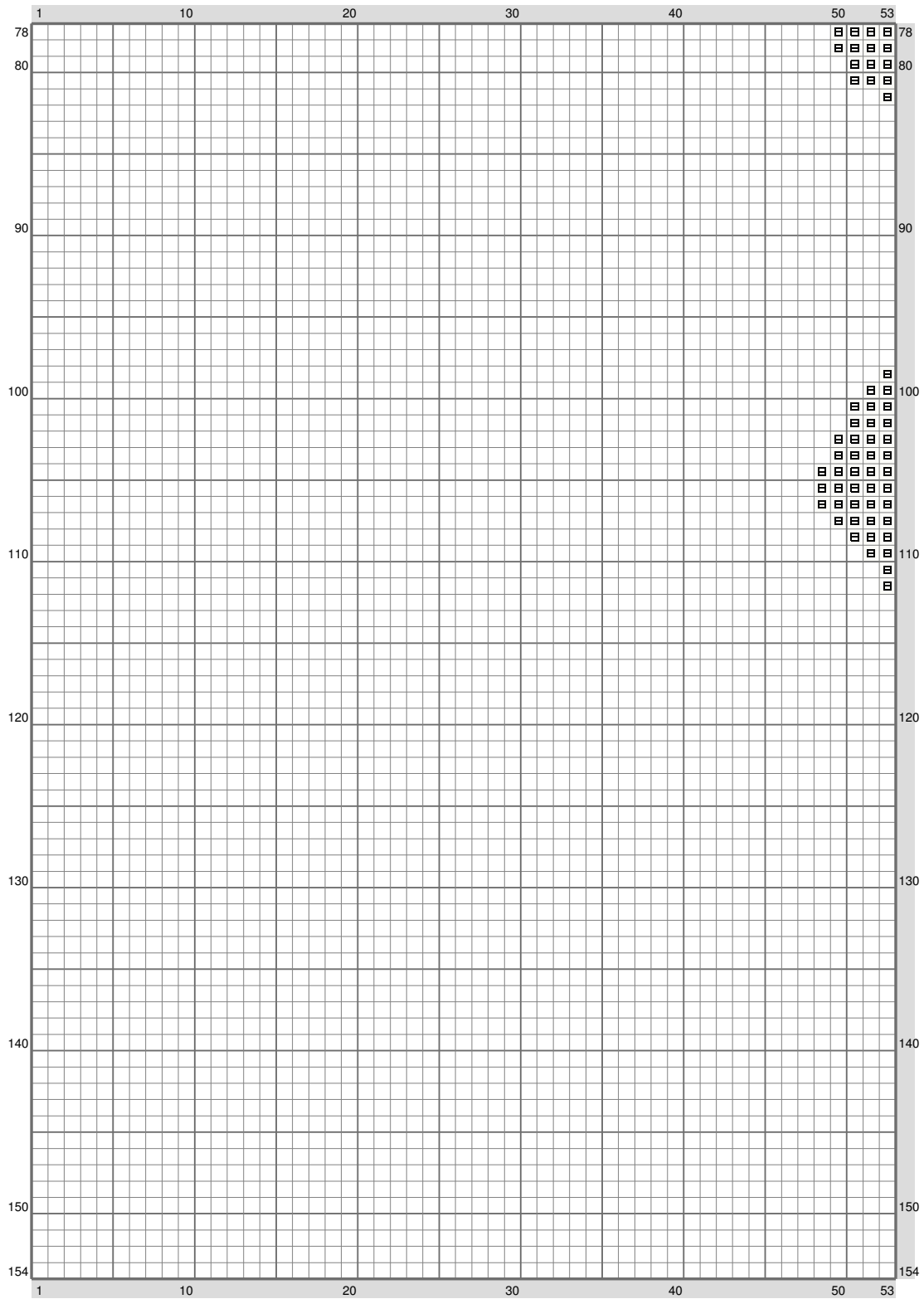
(This chart is printed using KG-Chart LE for Cross Stitch.)

ESM Part E



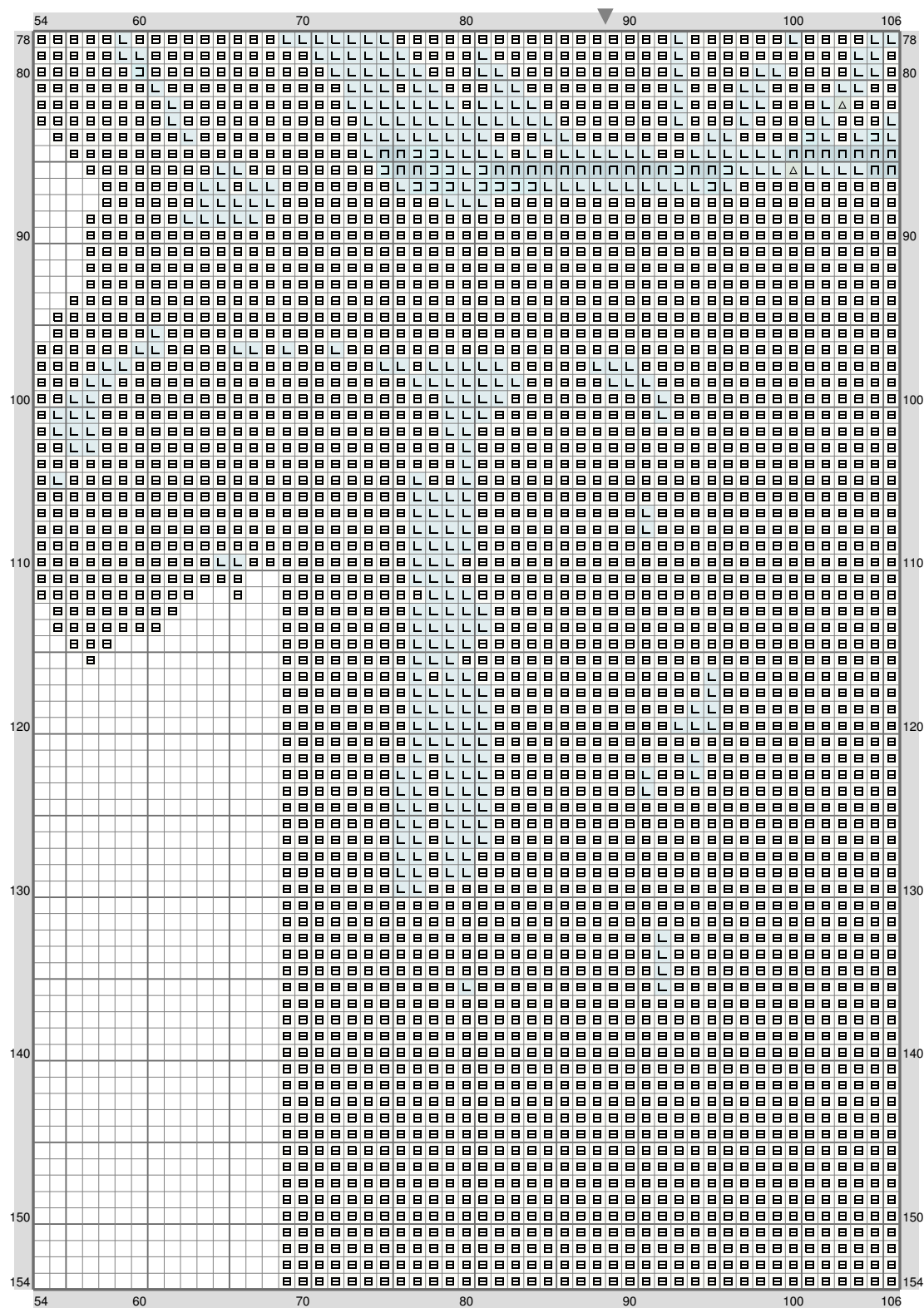
(This chart is printed using KG-Chart LE for Cross Stitch.)

ESM Part E



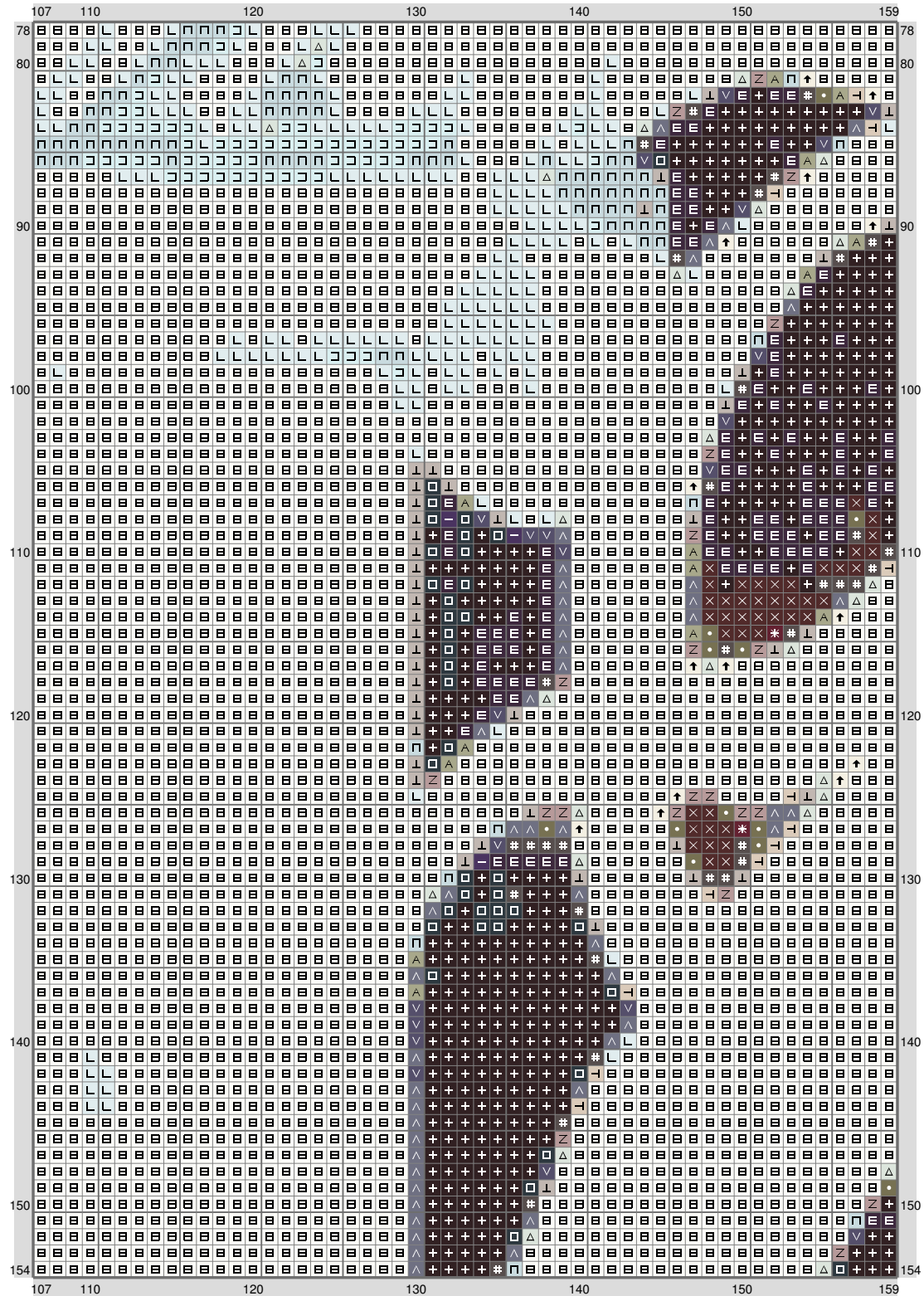
(This chart is printed using KG-Chart LE for Cross Stitch.)

ESM Part E



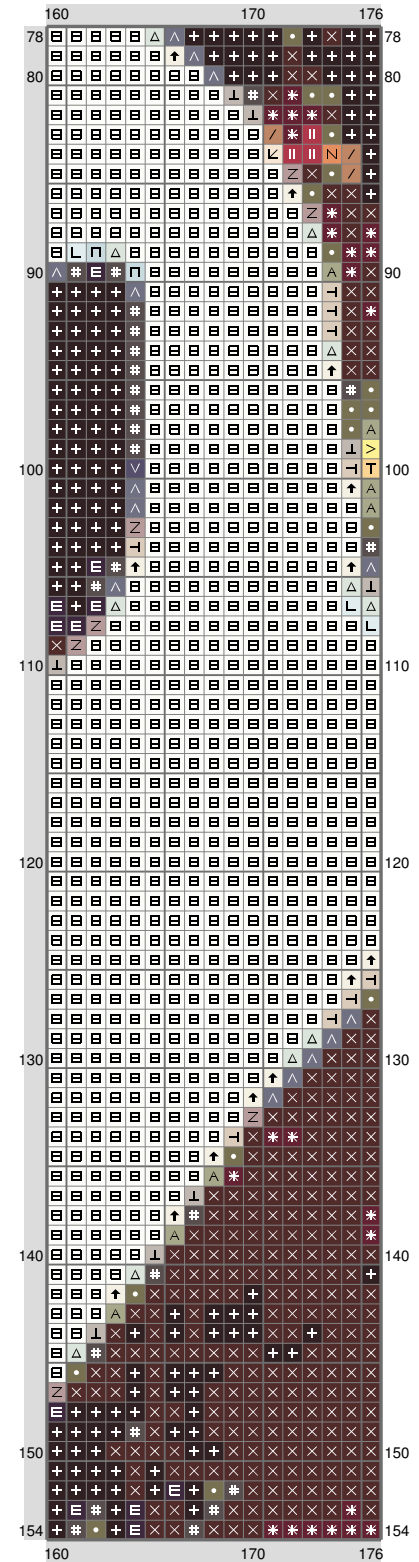
(This chart is printed using KG-Chart LE for Cross Stitch.)

ESM Part E



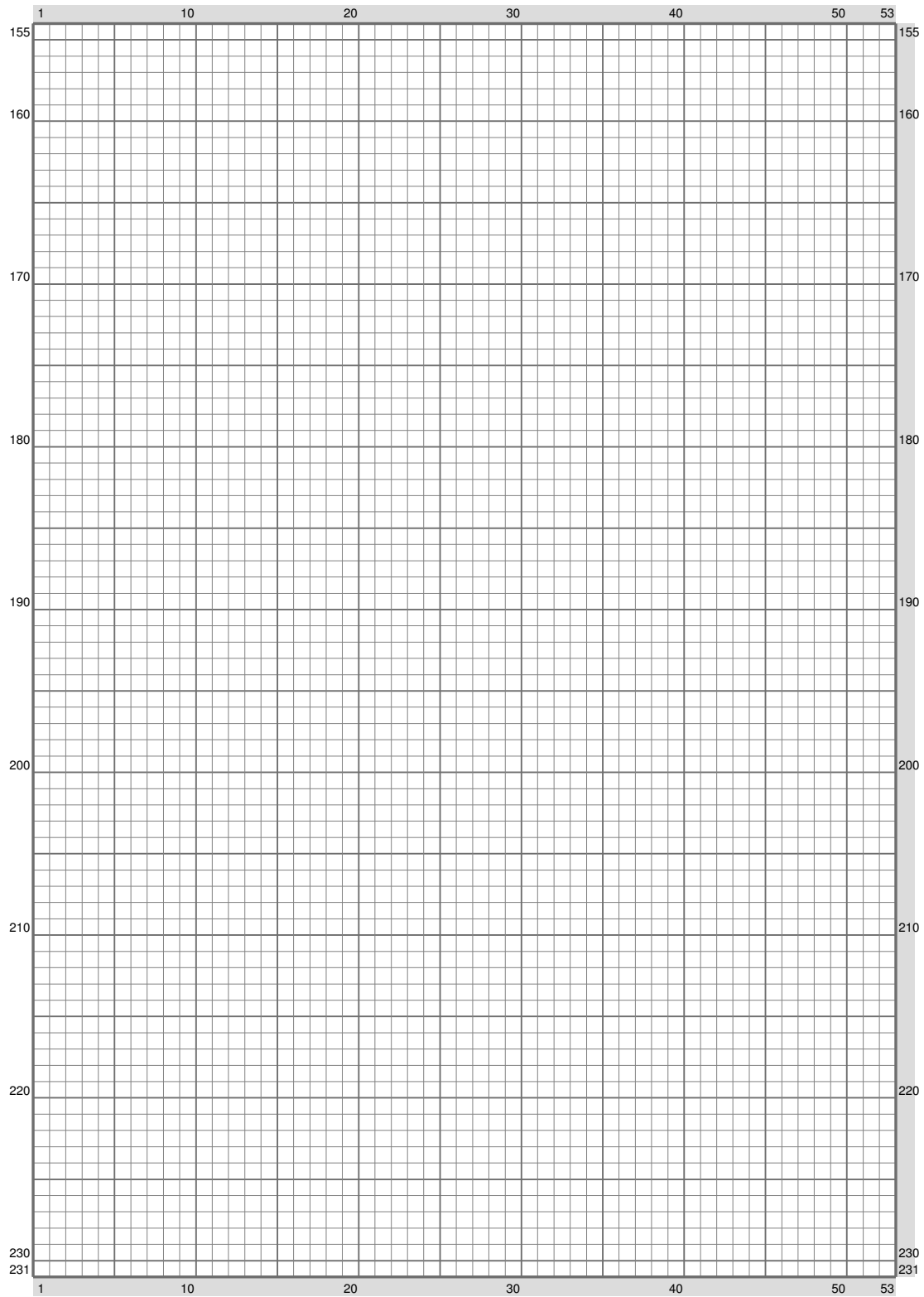
(This chart is printed using KG-Chart LE for Cross Stitch.)

ESM Part E



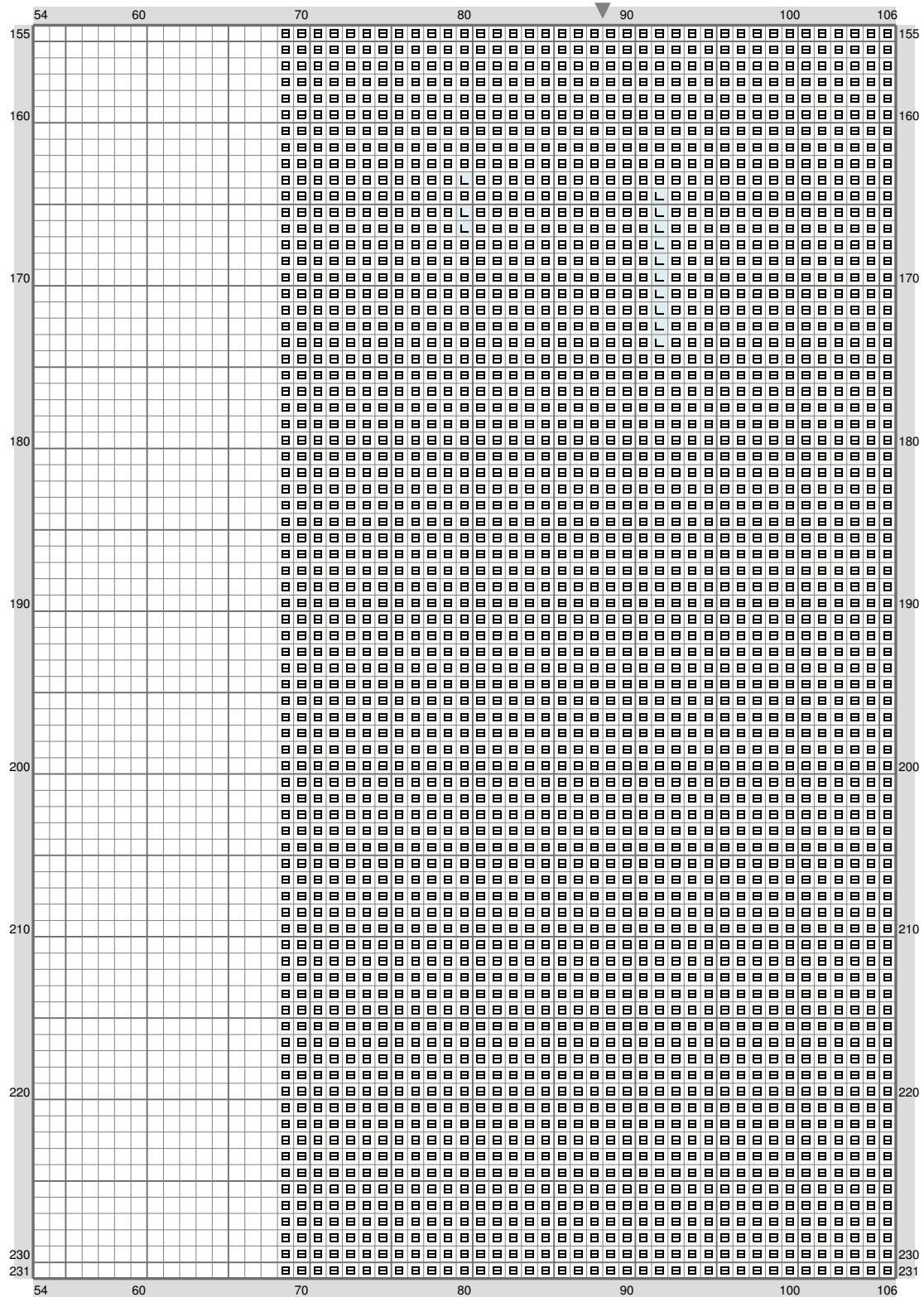
(This chart is printed using KG-Chart LE for Cross Stitch.)

ESM Part E



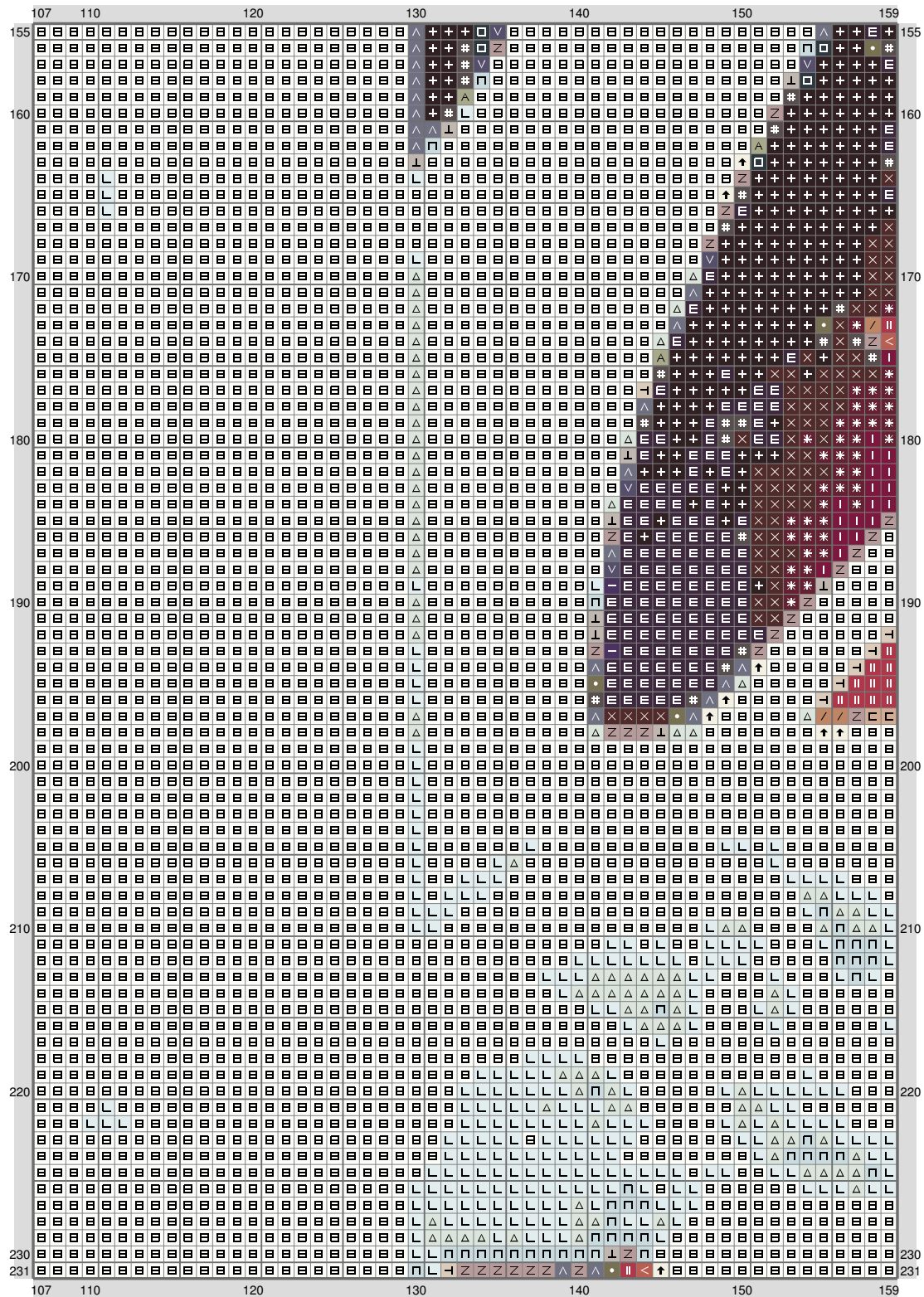
(This chart is printed using KG-Chart LE for Cross Stitch.)

ESM Part E



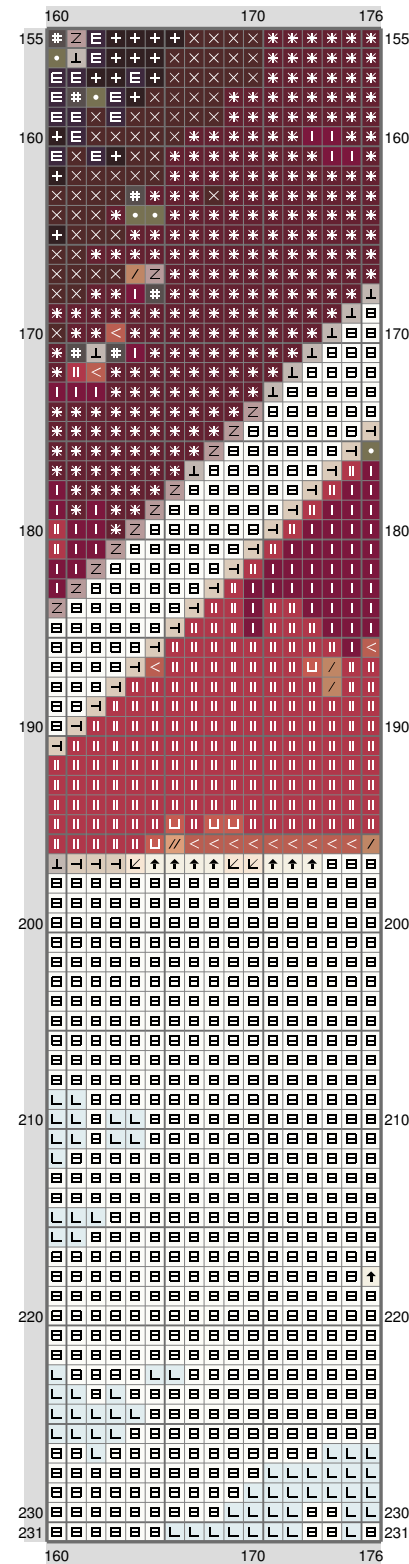
(This chart is printed using KG-Chart LE for Cross Stitch.)

ESM Part E



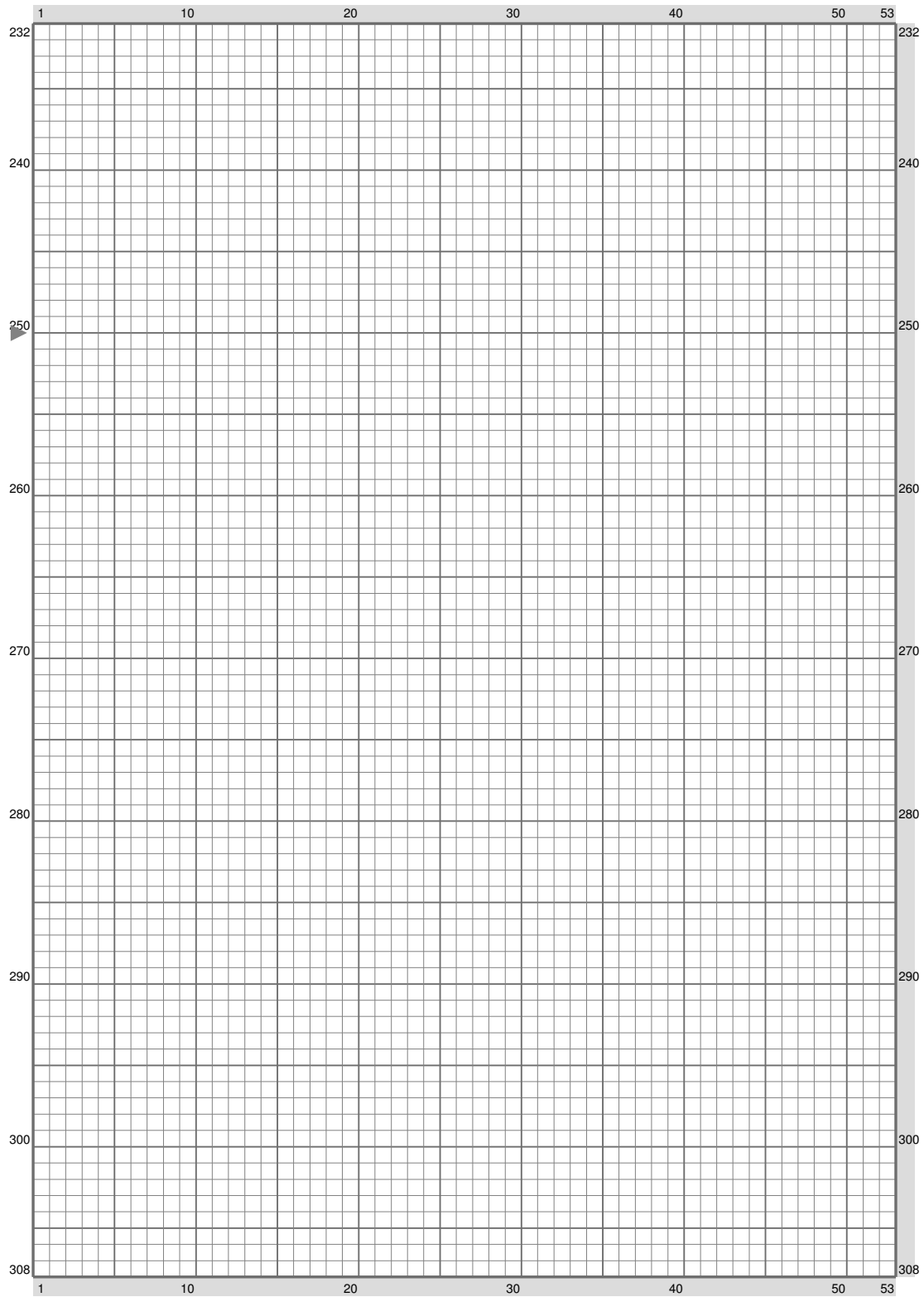
(This chart is printed using KG-Chart LE for Cross Stitch.)

ESM Part E



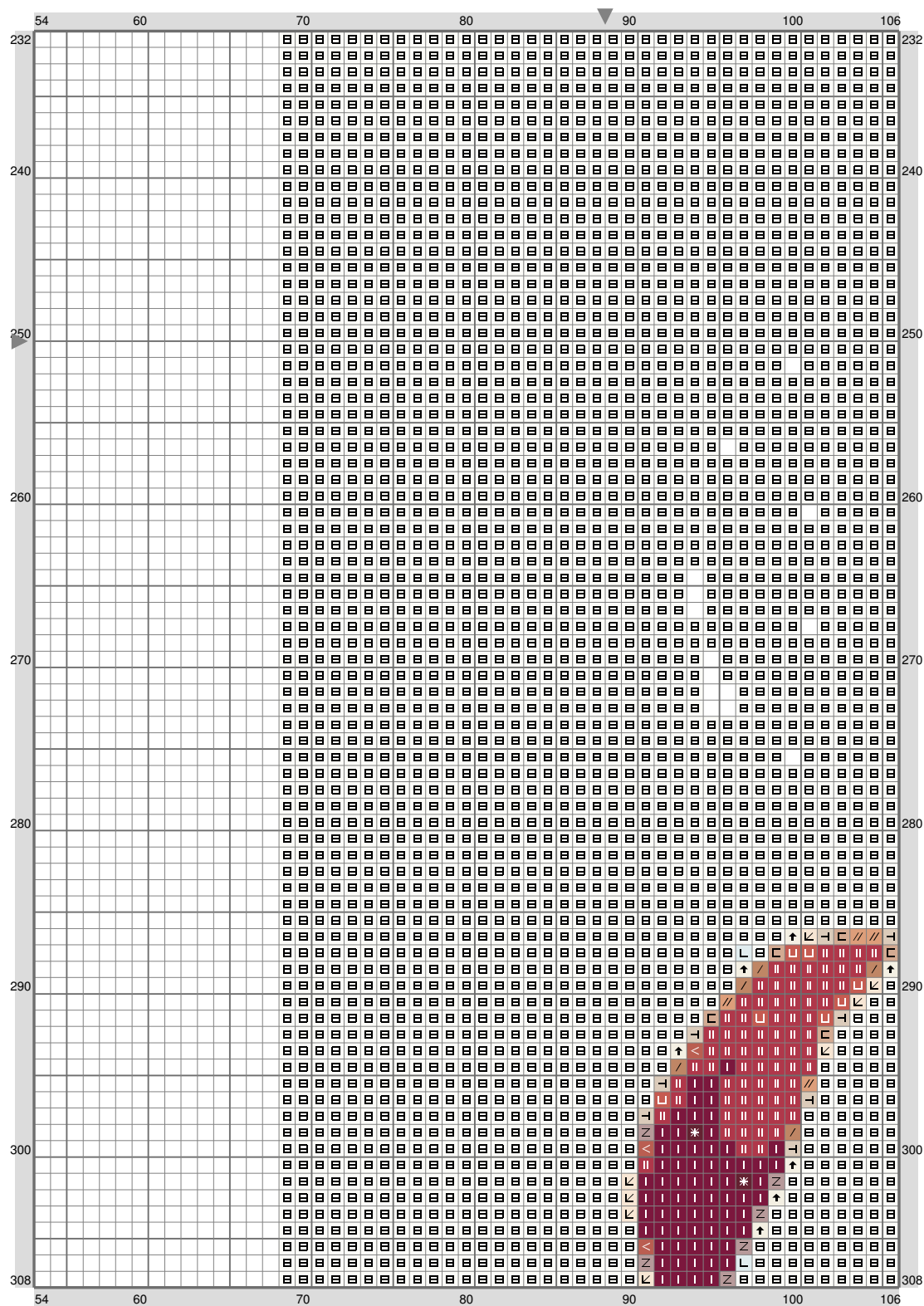
(This chart is printed using KG-Chart LE for Cross Stitch.)

ESM Part E



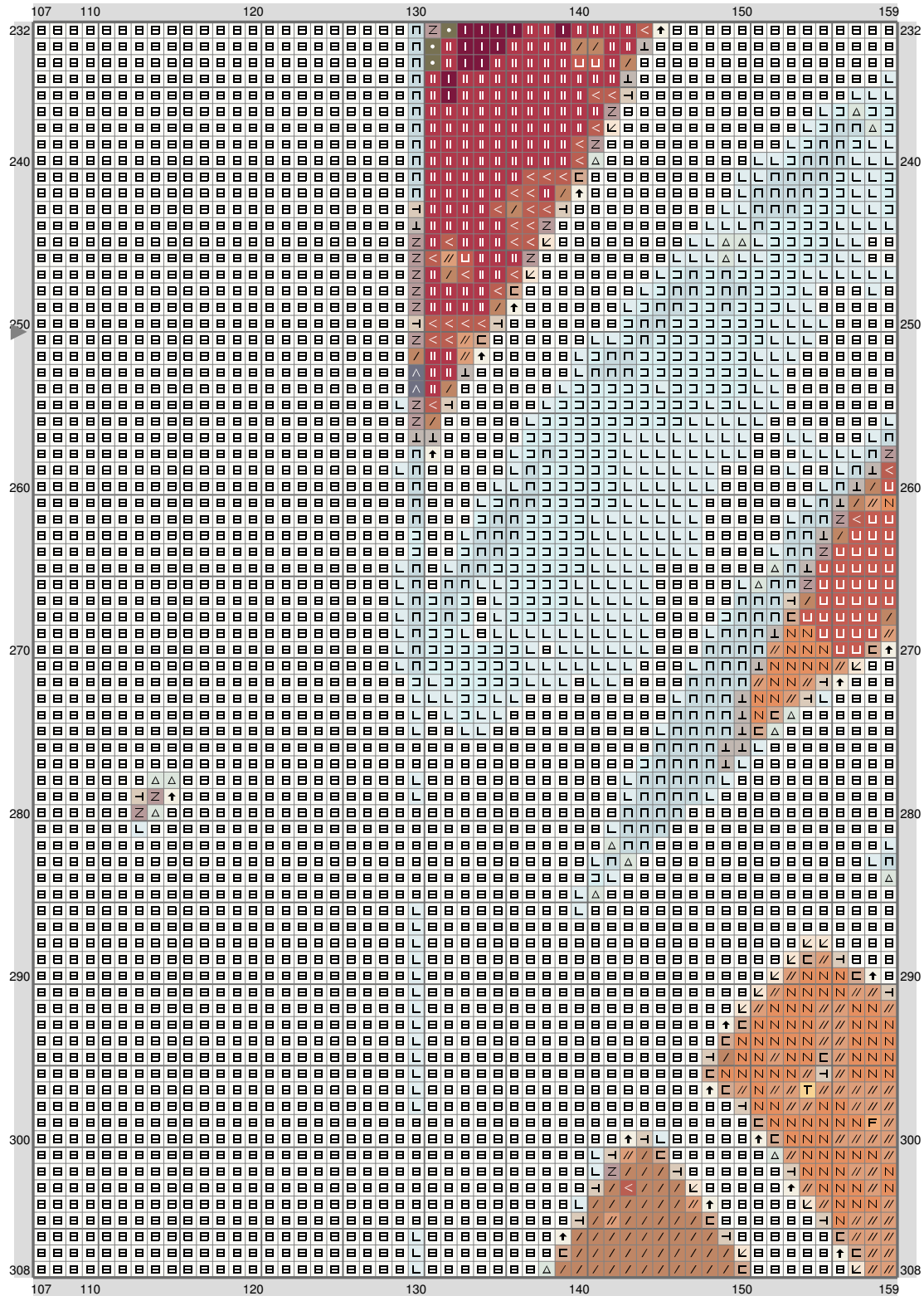
(This chart is printed using KG-Chart LE for Cross Stitch.)

ESM Part E



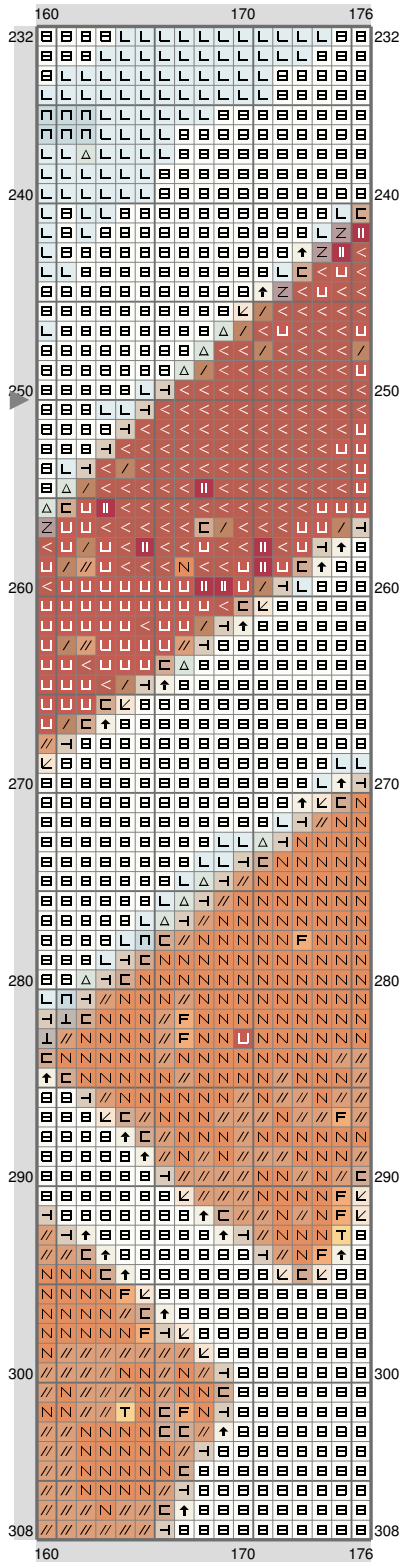
(This chart is printed using KG-Chart LE for Cross Stitch.)

ESM Part E



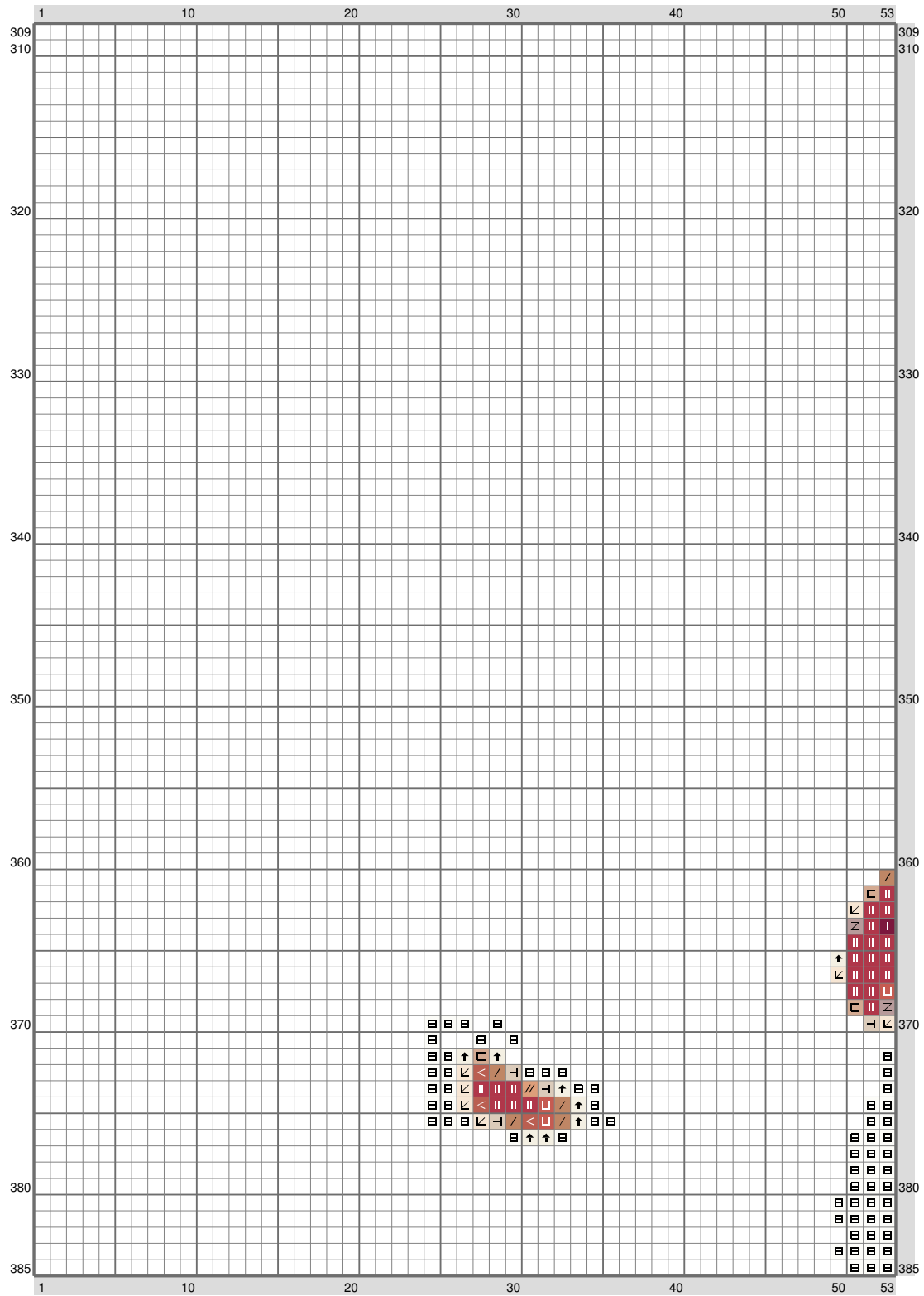
(This chart is printed using KG-Chart LE for Cross Stitch.)

ESM Part E



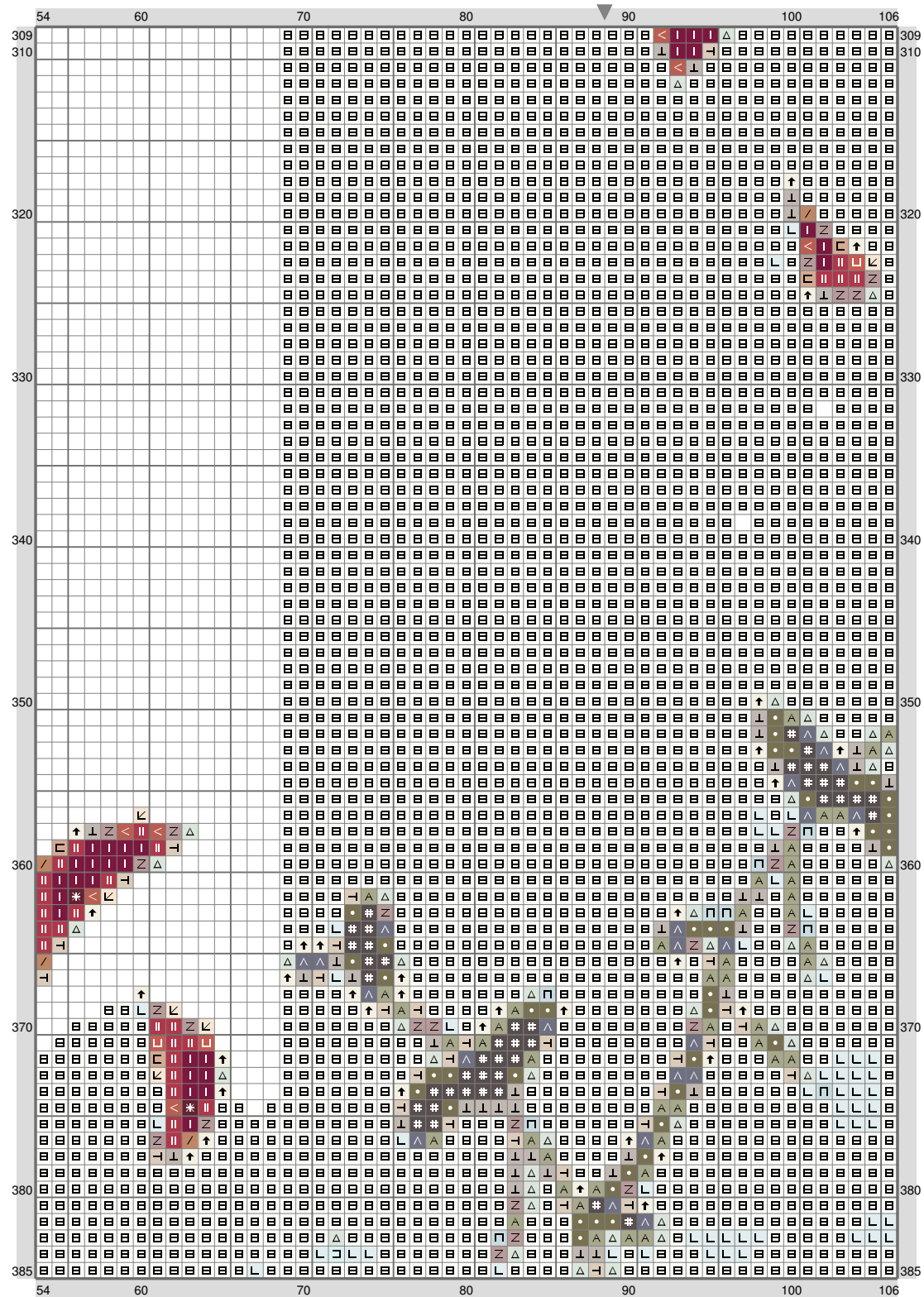
(This chart is printed using KG-Chart LE for Cross Stitch.

ESM Part E



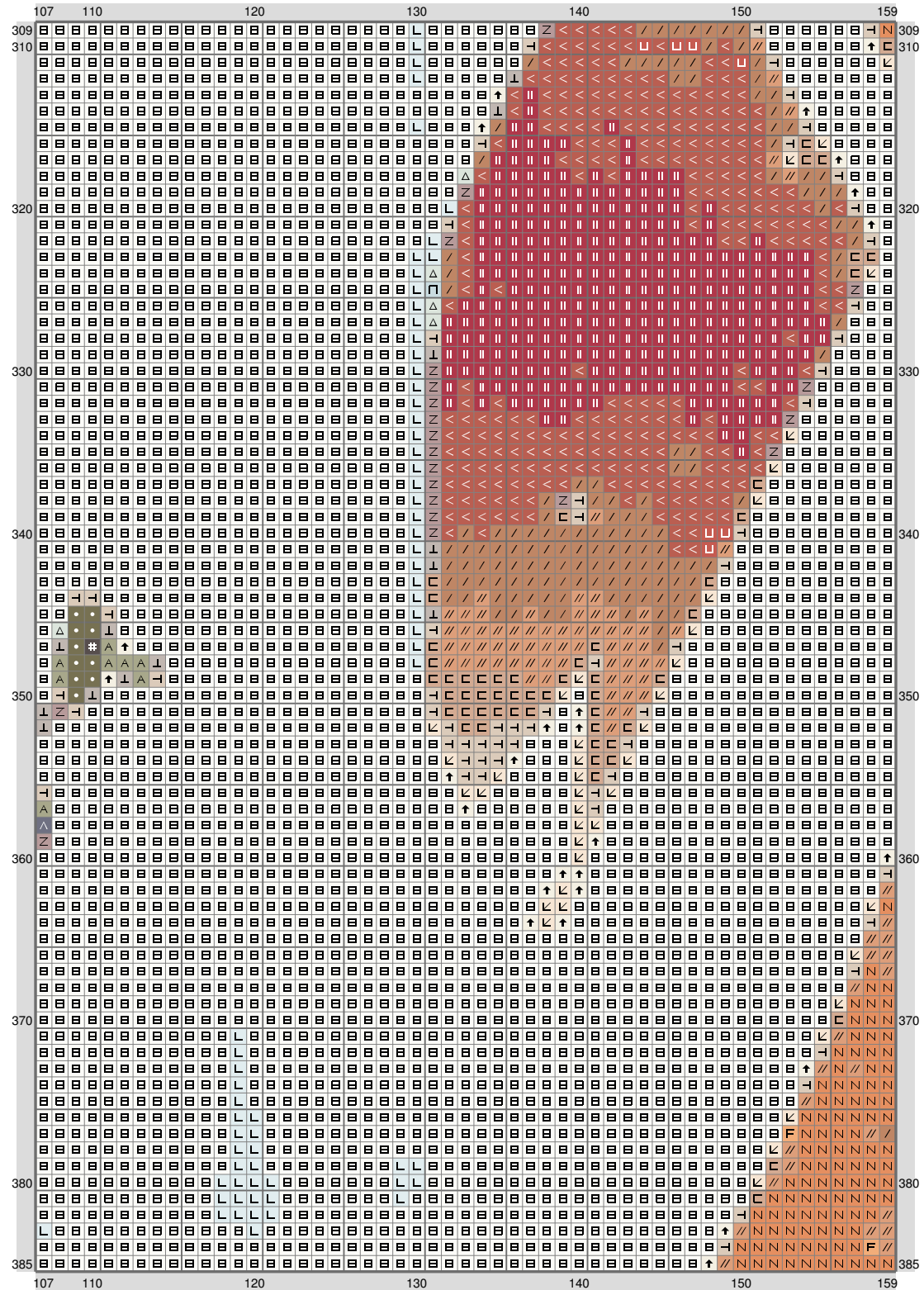
(This chart is printed using KG-Chart LE for Cross Stitch.)

ESM Part E



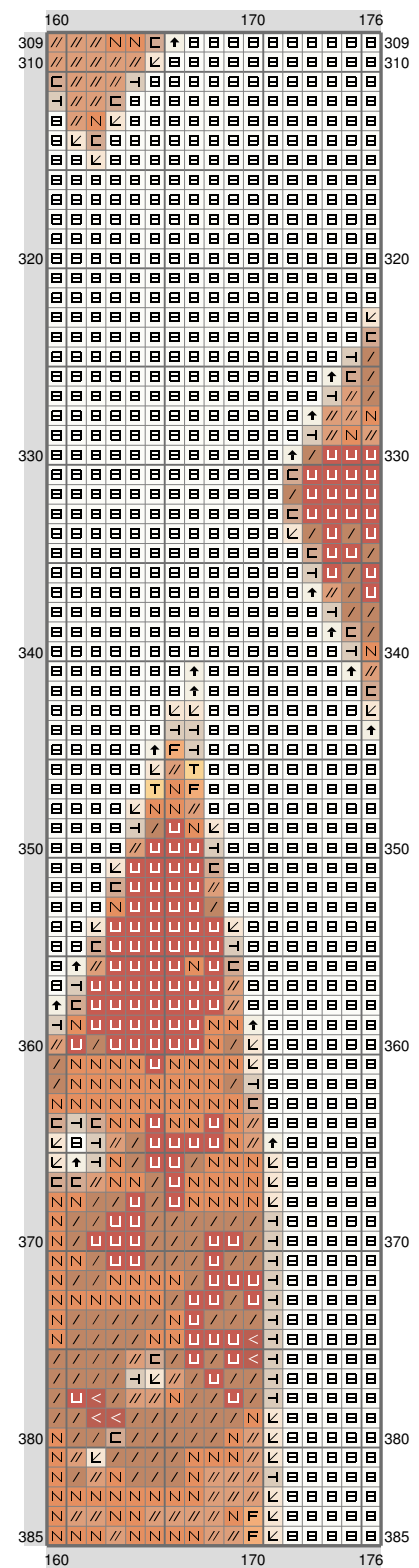
(This chart is printed using KG-Chart LE for Cross Stitch.)

ESM Part E



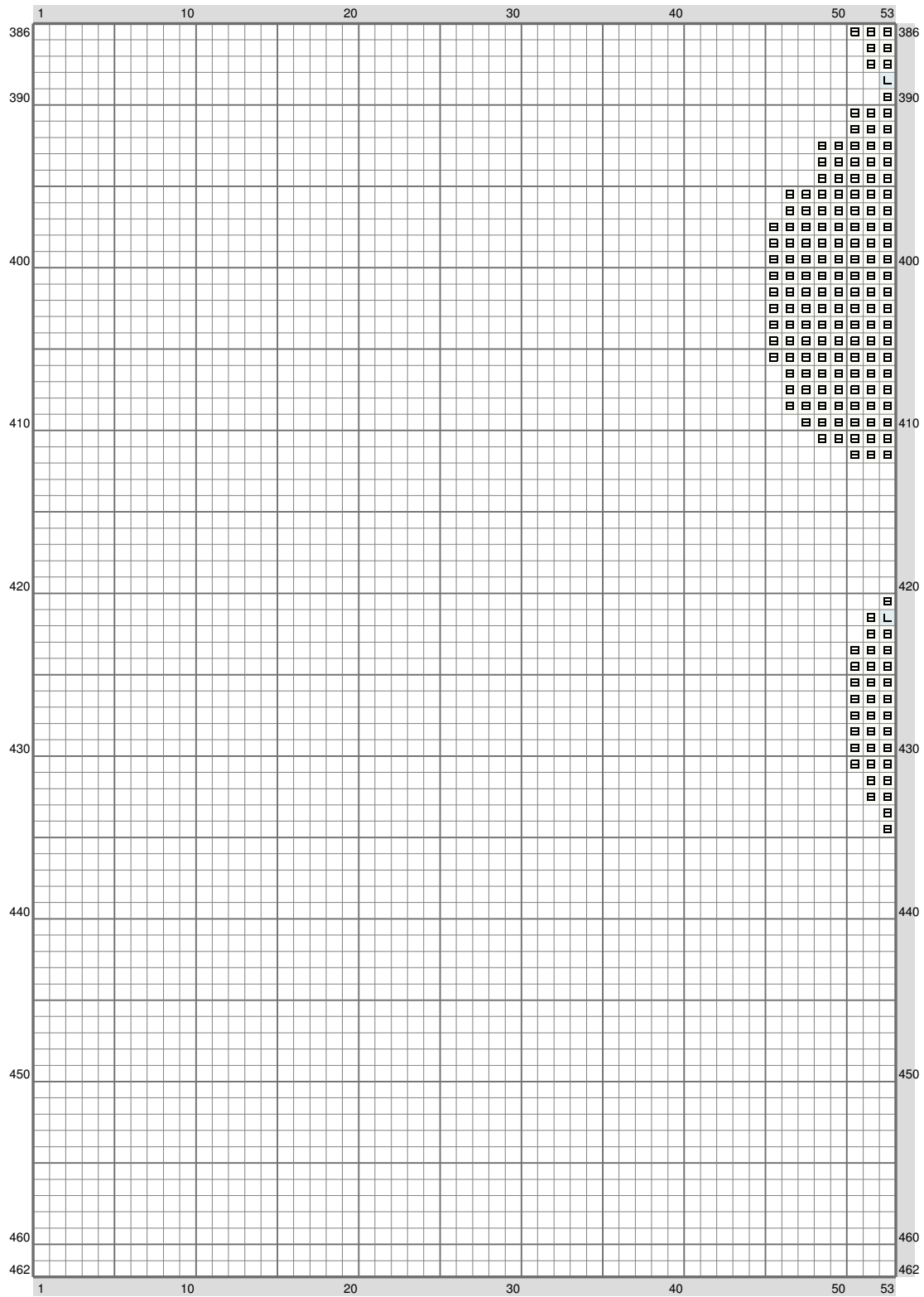
(This chart is printed using KG-Chart LE for Cross Stitch.)

ESM Part E



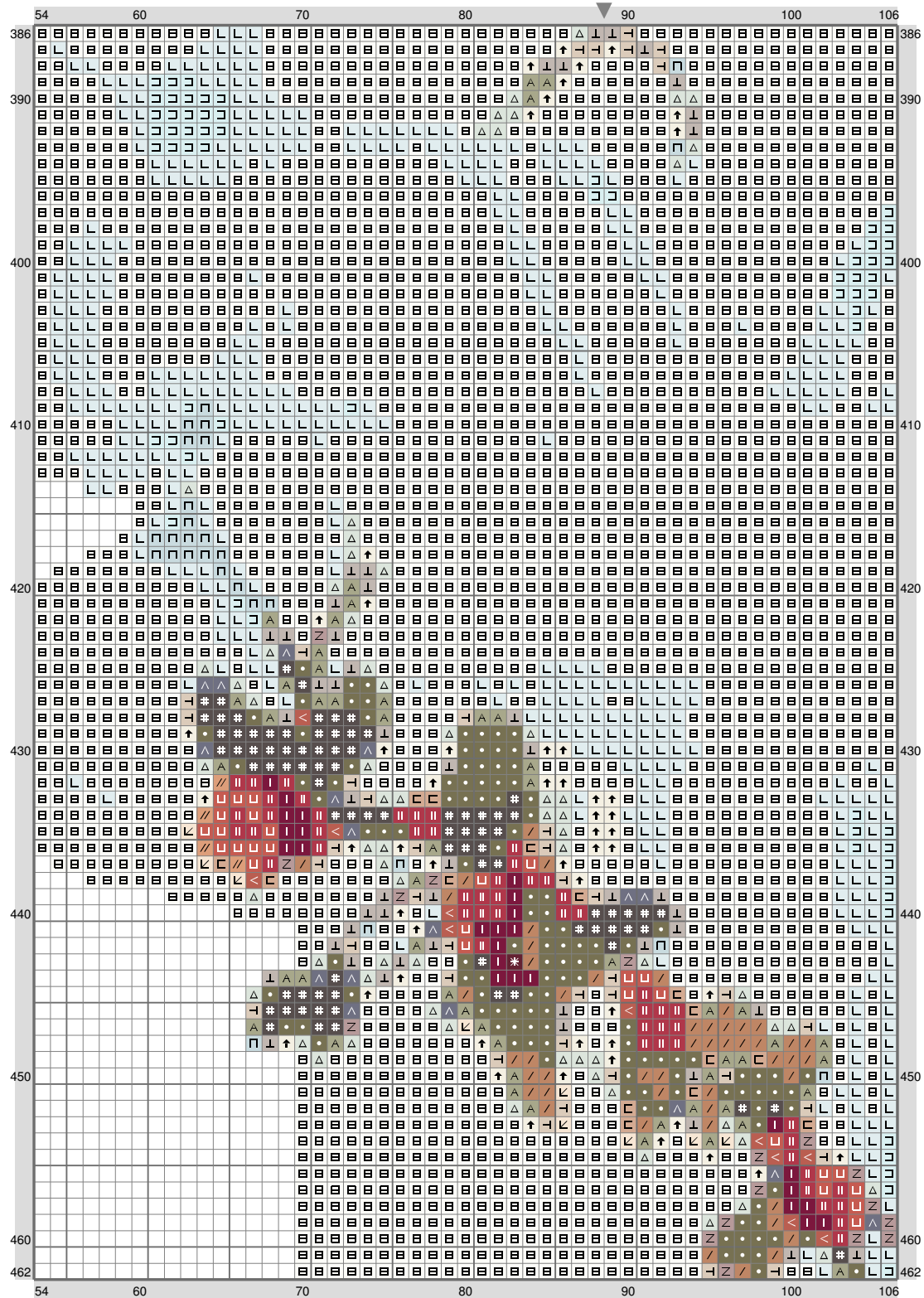
(This chart is printed using KG-Chart LE for Cross Stitch.)

ESM Part E



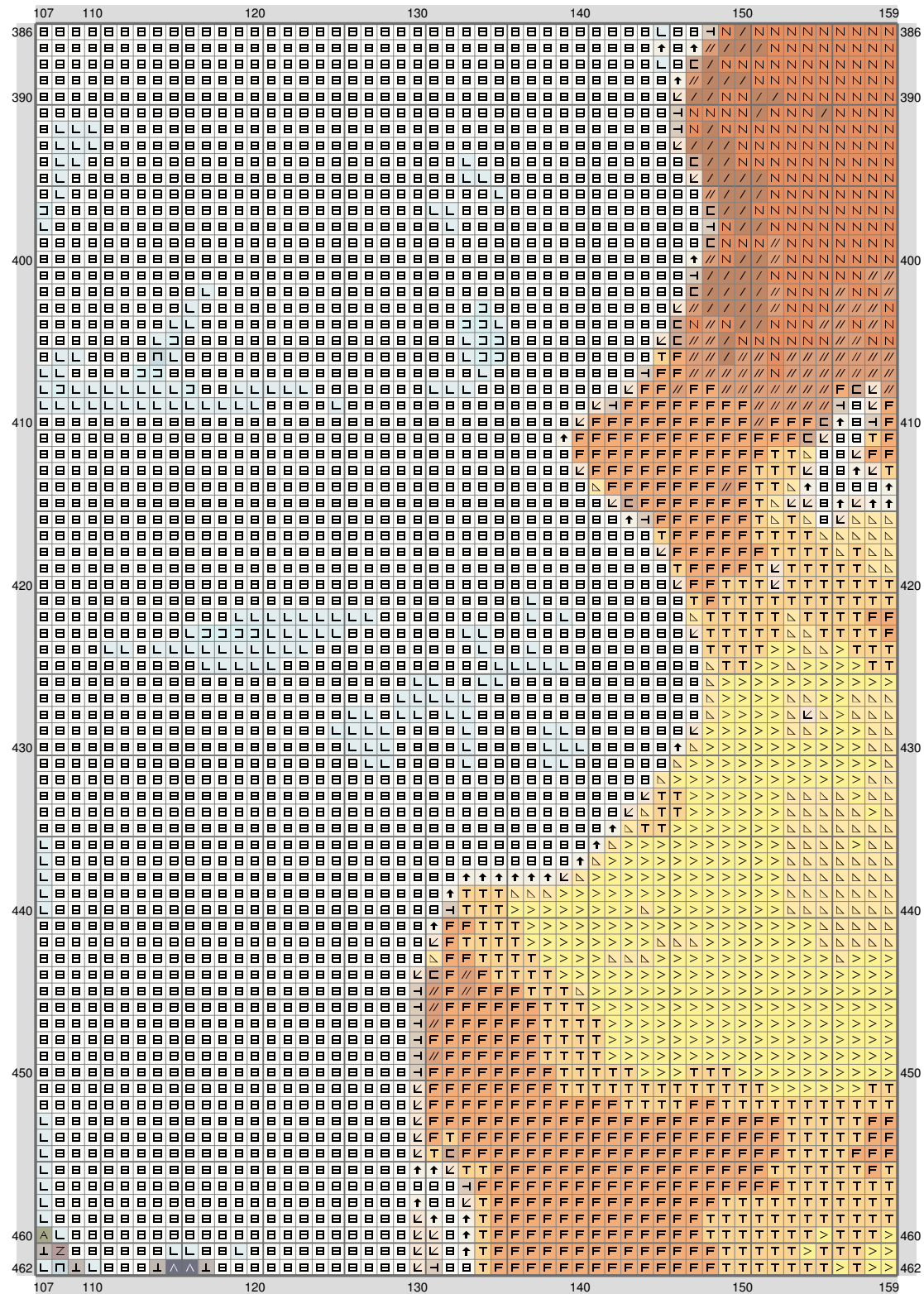
(This chart is printed using KG-Chart LE for Cross Stitch.)

ESM Part E



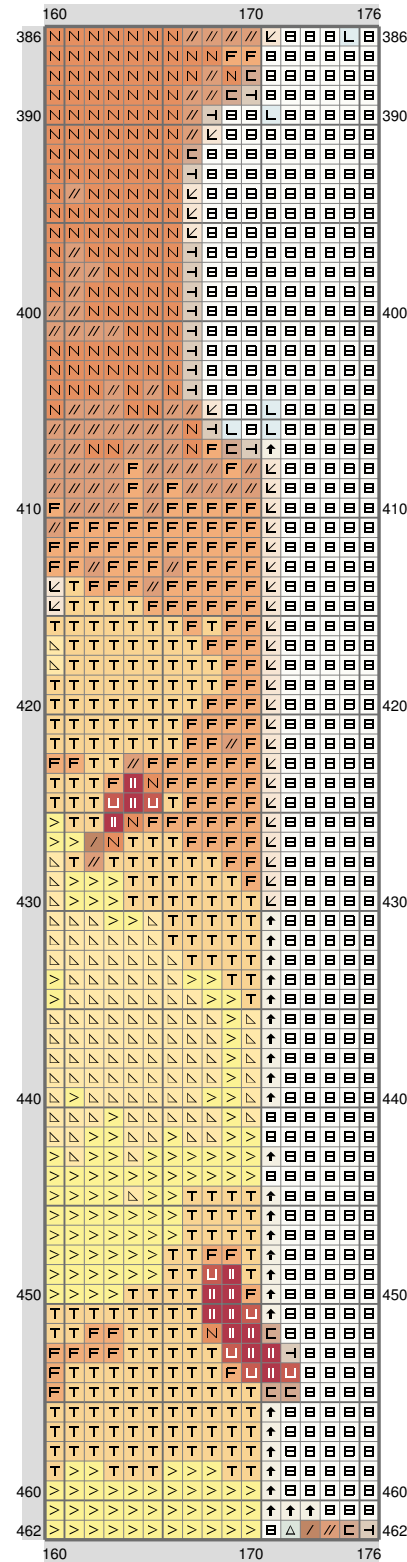
(This chart is printed using KG-Chart LE for Cross Stitch.)

ESM Part E



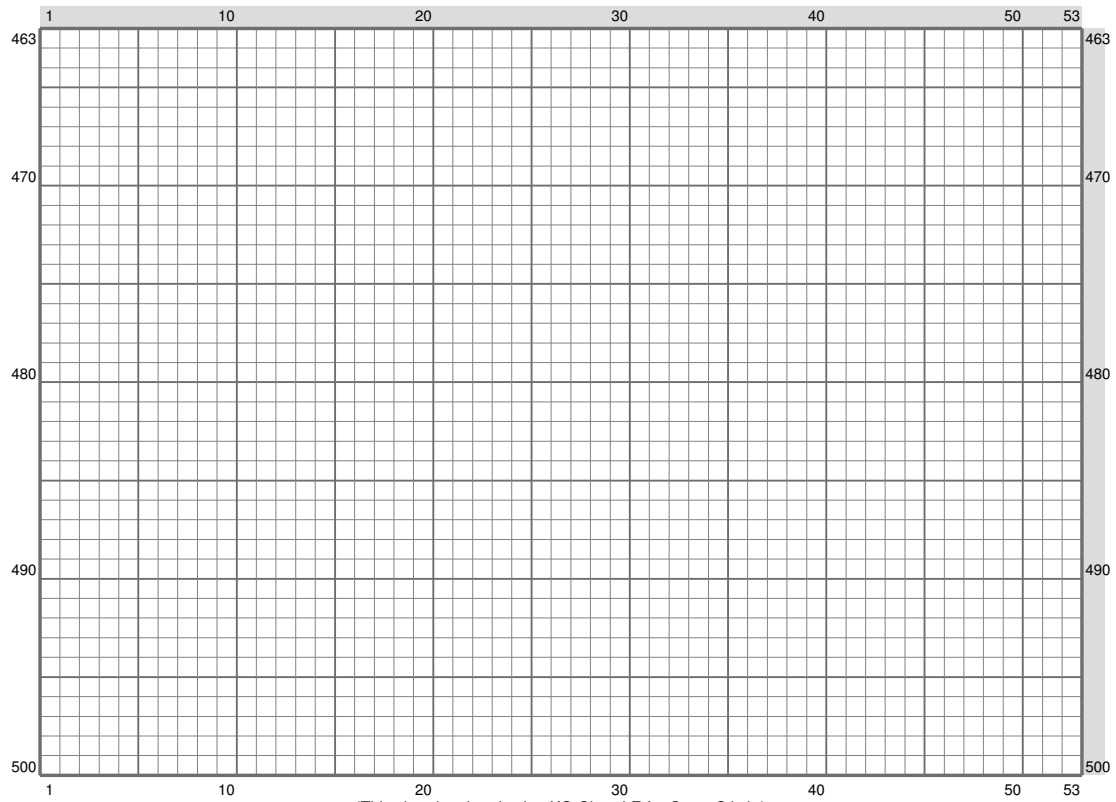
(This chart is printed using KG-Chart LE for Cross Stitch.)

ESM Part E

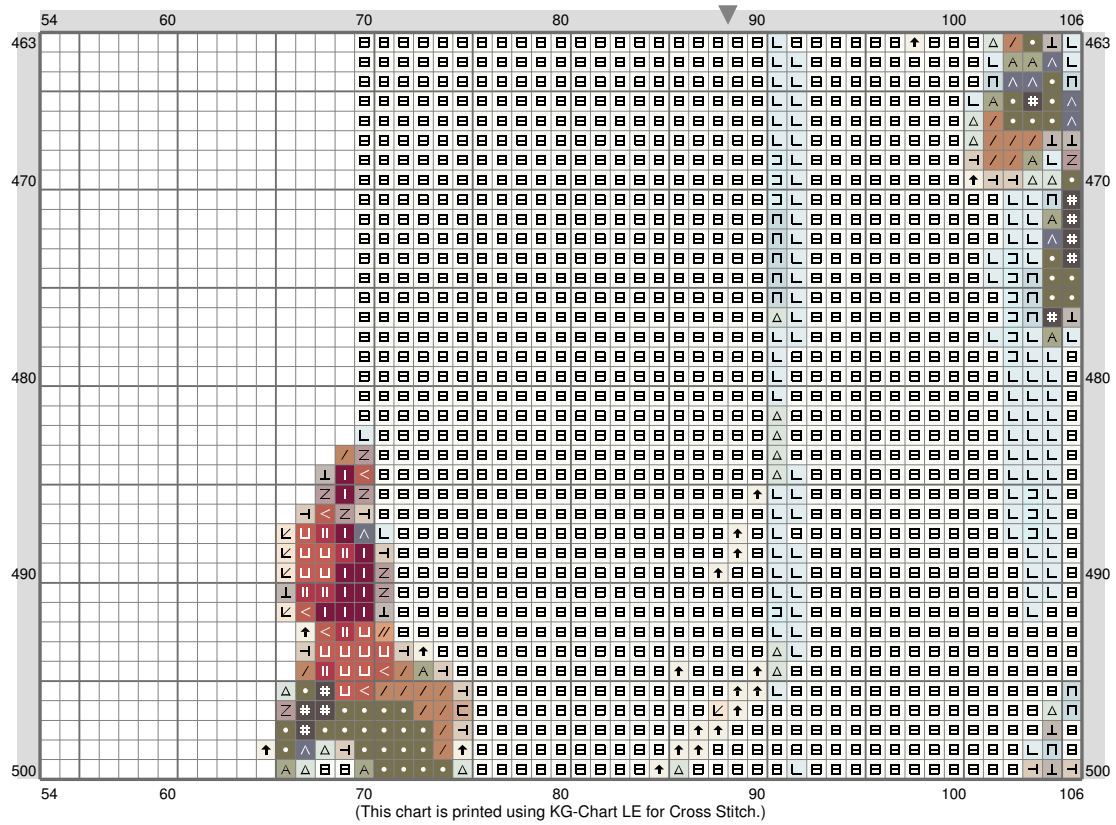


(This chart is printed using KG-Chart LE for Cross Stitch.)

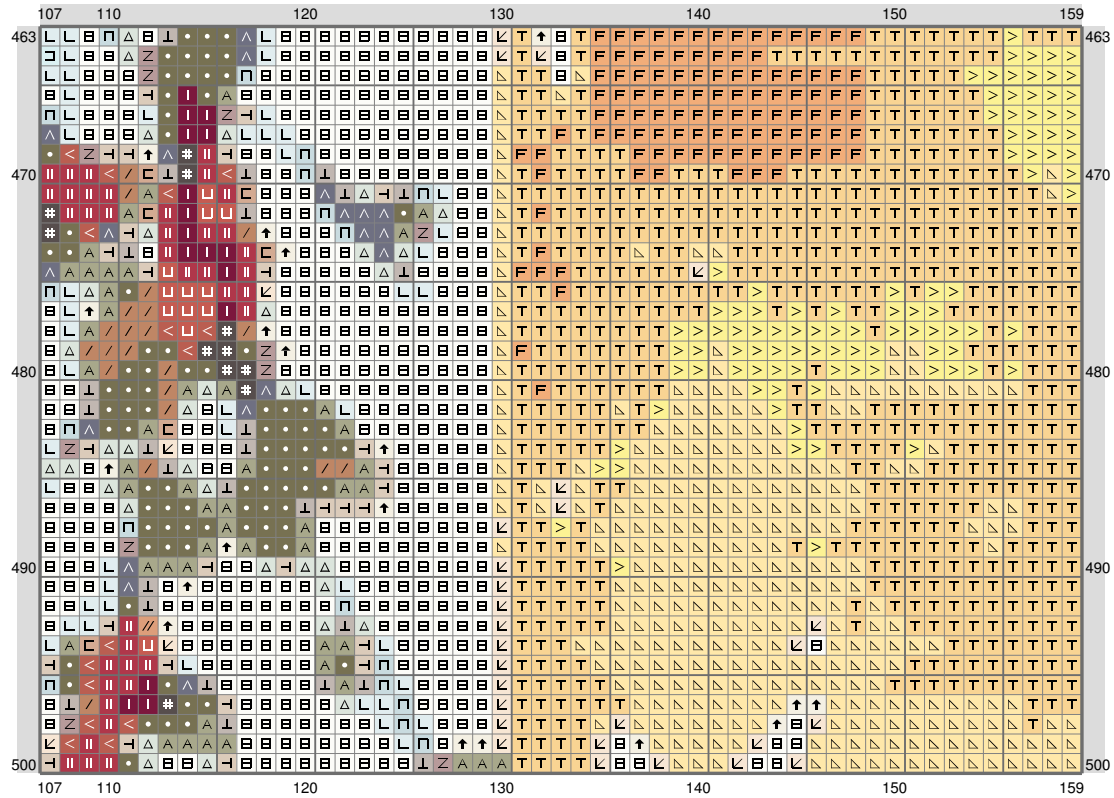
ESM Part E



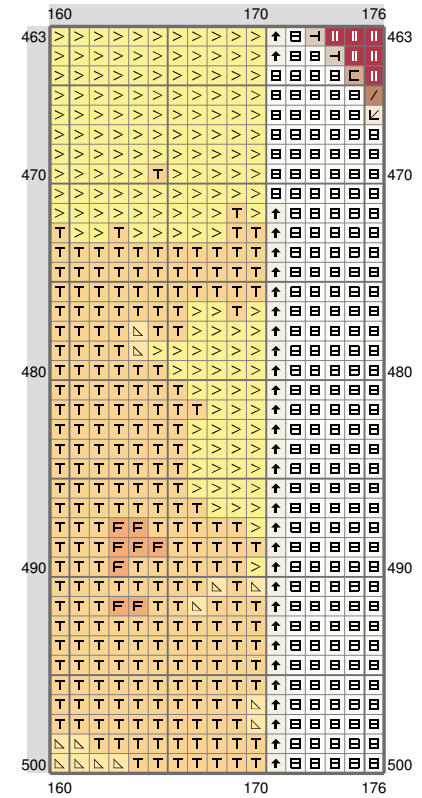
ESM Part E



ESM Part E



ESM Part E



































ESM Part E

Stitch Count: 176w x 500h
 Finished Size: 31.93 cm x 90.71 cm (14 ct./inch)
 Cloth: Aida
 Cloth's Color: White
 # of colors: 33 Colors

Color Table (DMC)

Cross Stitch

 BLANC (38064 ct)

	939	(1178 ct)
	823	(1087 ct)
	500	(1165 ct)
	336	(1320 ct)
	3371	(417 ct)
	814	(304 ct)
	915	(237 ct)
	844	(256 ct)
	3051	(347 ct)
	413	(165 ct)
	317	(271 ct)
	355	(848 ct)
	400	(507 ct)
	919	(310 ct)
	3862	(491 ct)
	840	(247 ct)
	3826	(825 ct)
	436	(462 ct)
	3053	(204 ct)
	3864	(188 ct)
	977	(607 ct)
	3855	(1267 ct)
	647	(385 ct)
	613	(375 ct)
	775	(486 ct)
	3072	(368 ct)
	727	(737 ct)
	744	(566 ct)
	3756	(2322 ct)
	739	(246 ct)
	ECRU	(364 ct)
	3841	(401 ct)