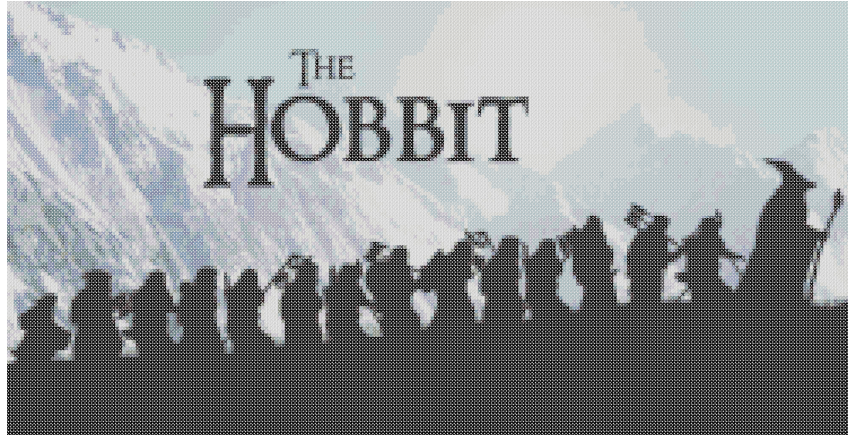
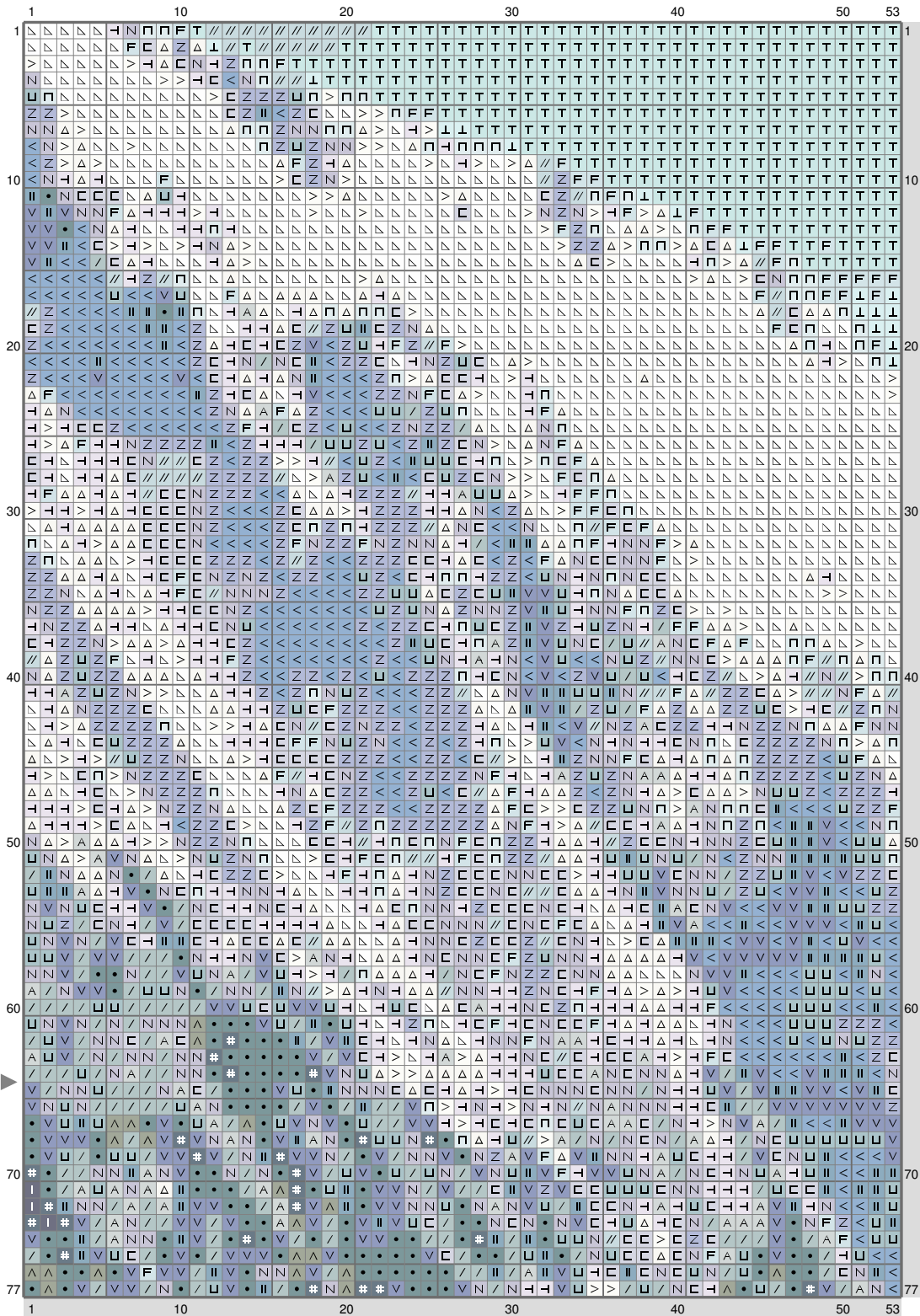


## The Hobbit



## The Hobbit



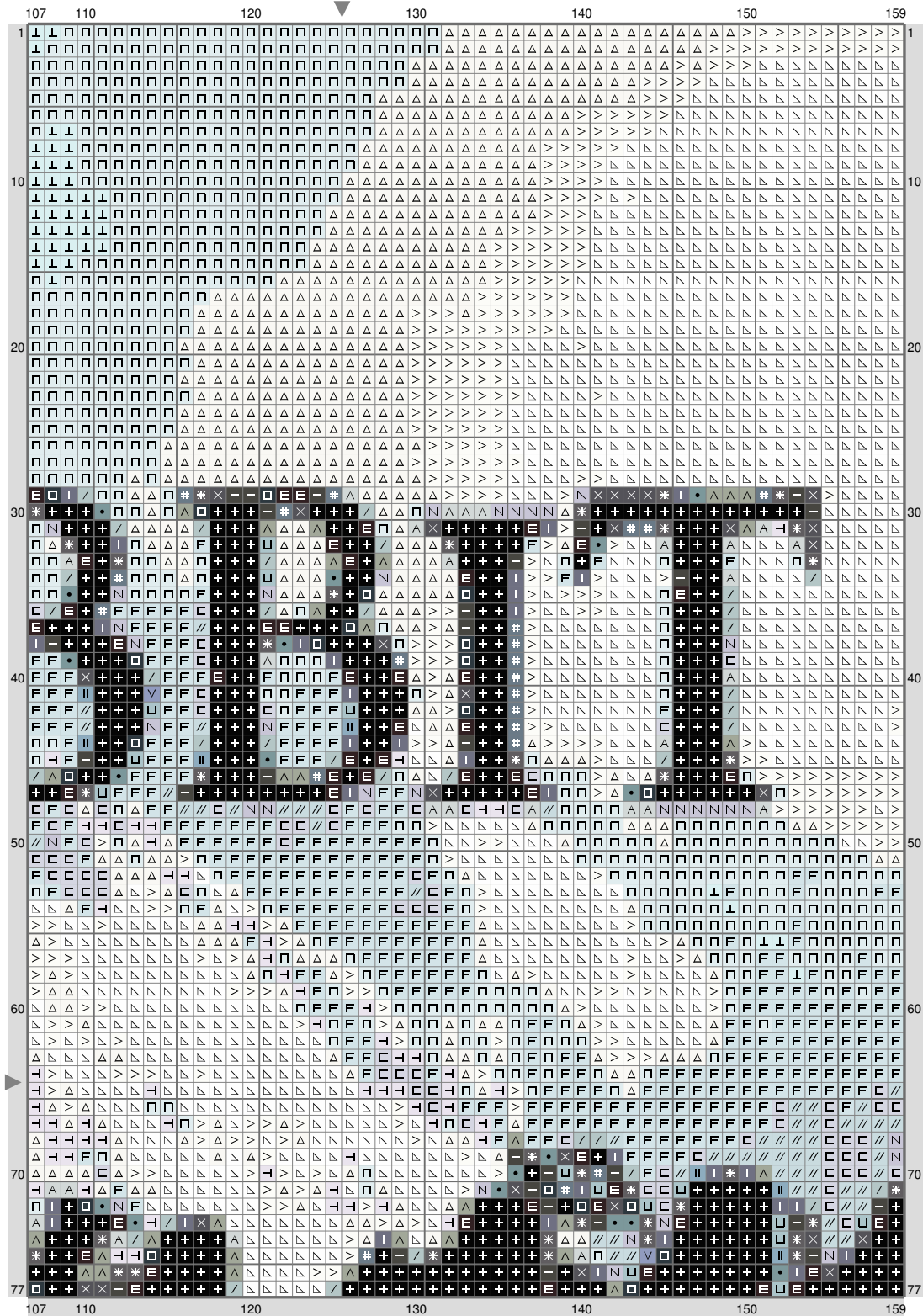
(This chart is printed using KG-Chart LE for Cross Stitch.)

# The Hobbit



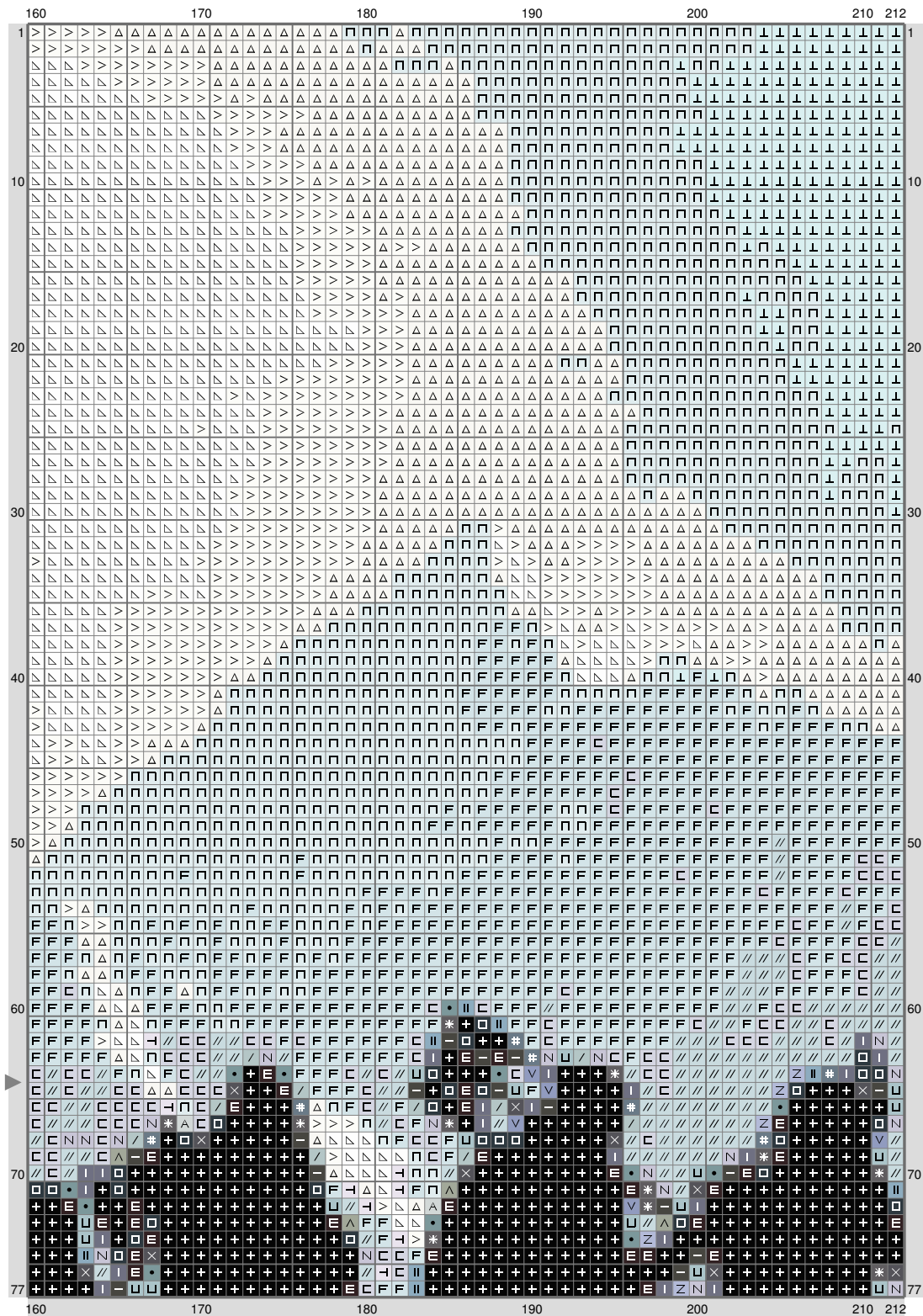
(This chart is printed using KG-Chart LE for Cross Stitch.)

## The Hobbit



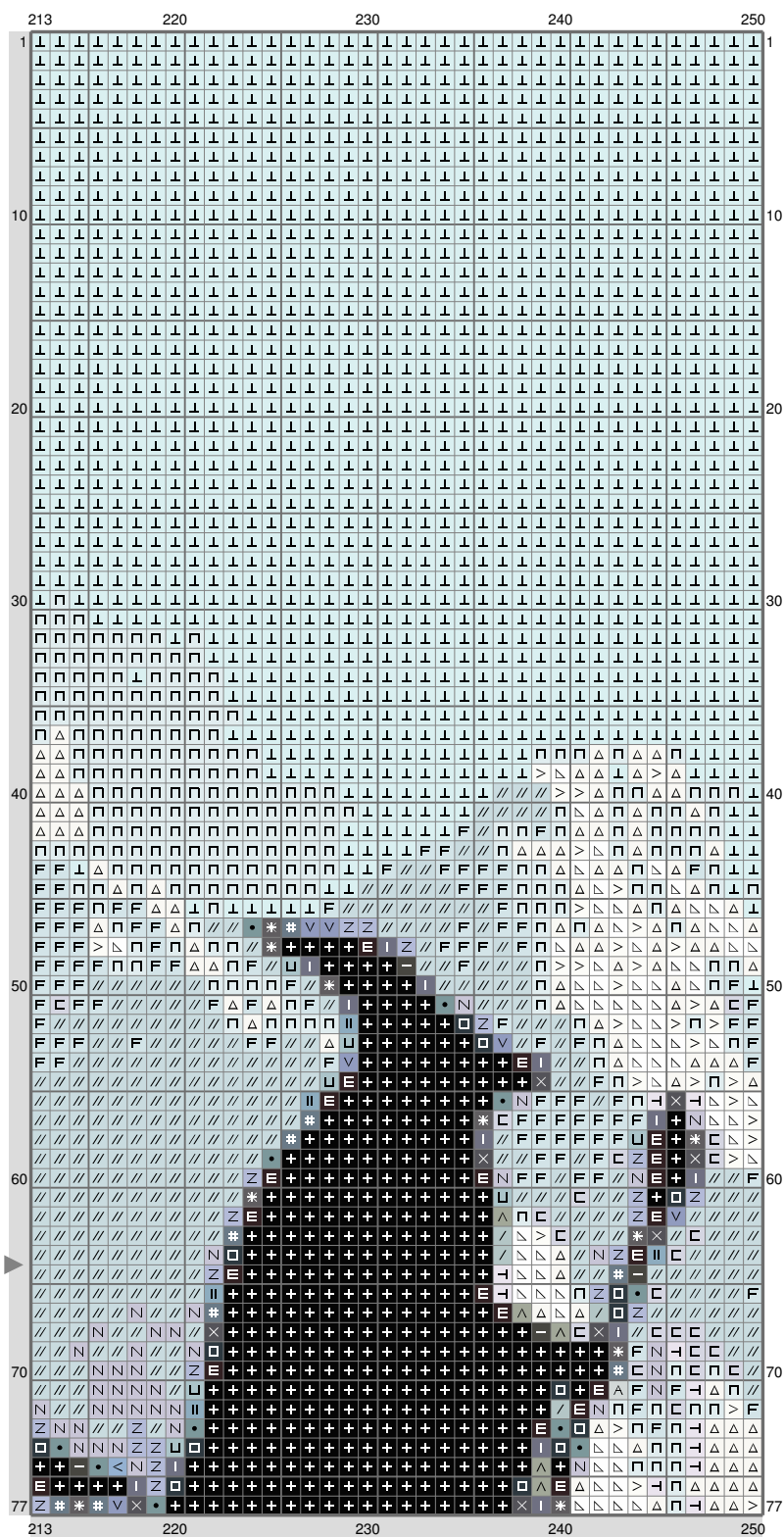
(This chart is printed using KG-Chart LE for Cross Stitch.)

## The Hobbit



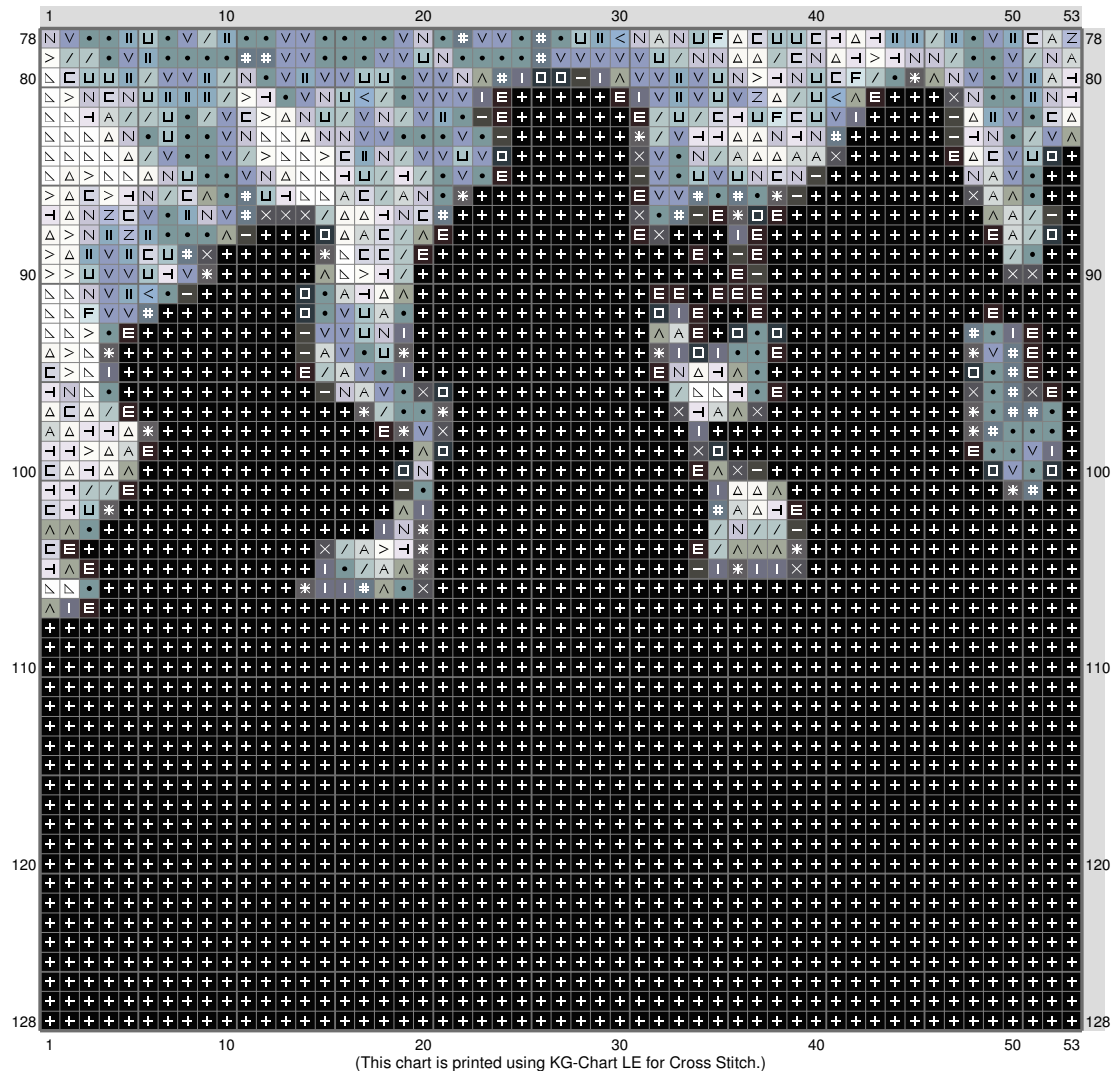
(This chart is printed using KG-Chart LE for Cross Stitch.)

## The Hobbit

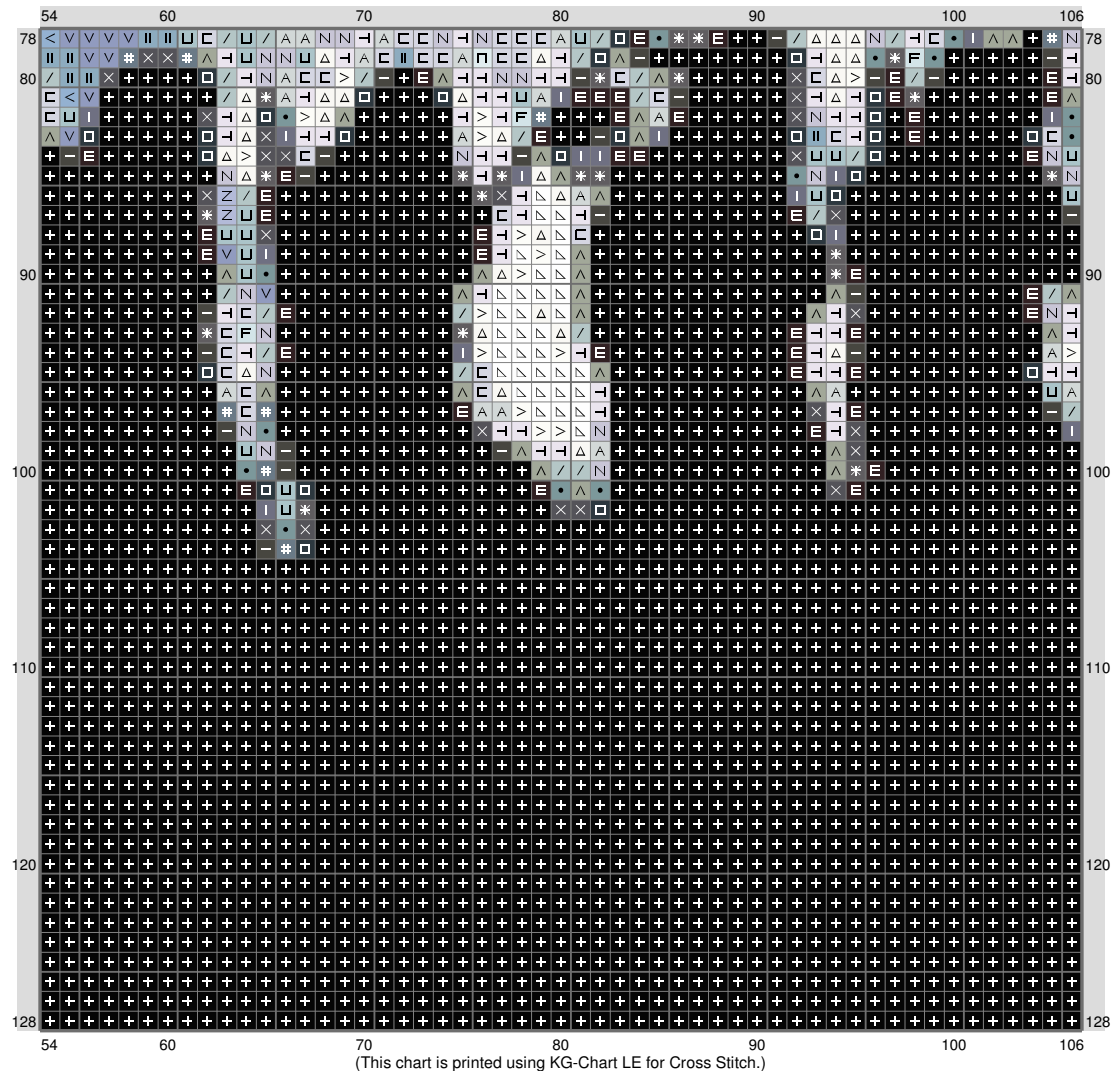


(This chart is printed using KG-Chart LE for Cross Stitch.)

# The Hobbit

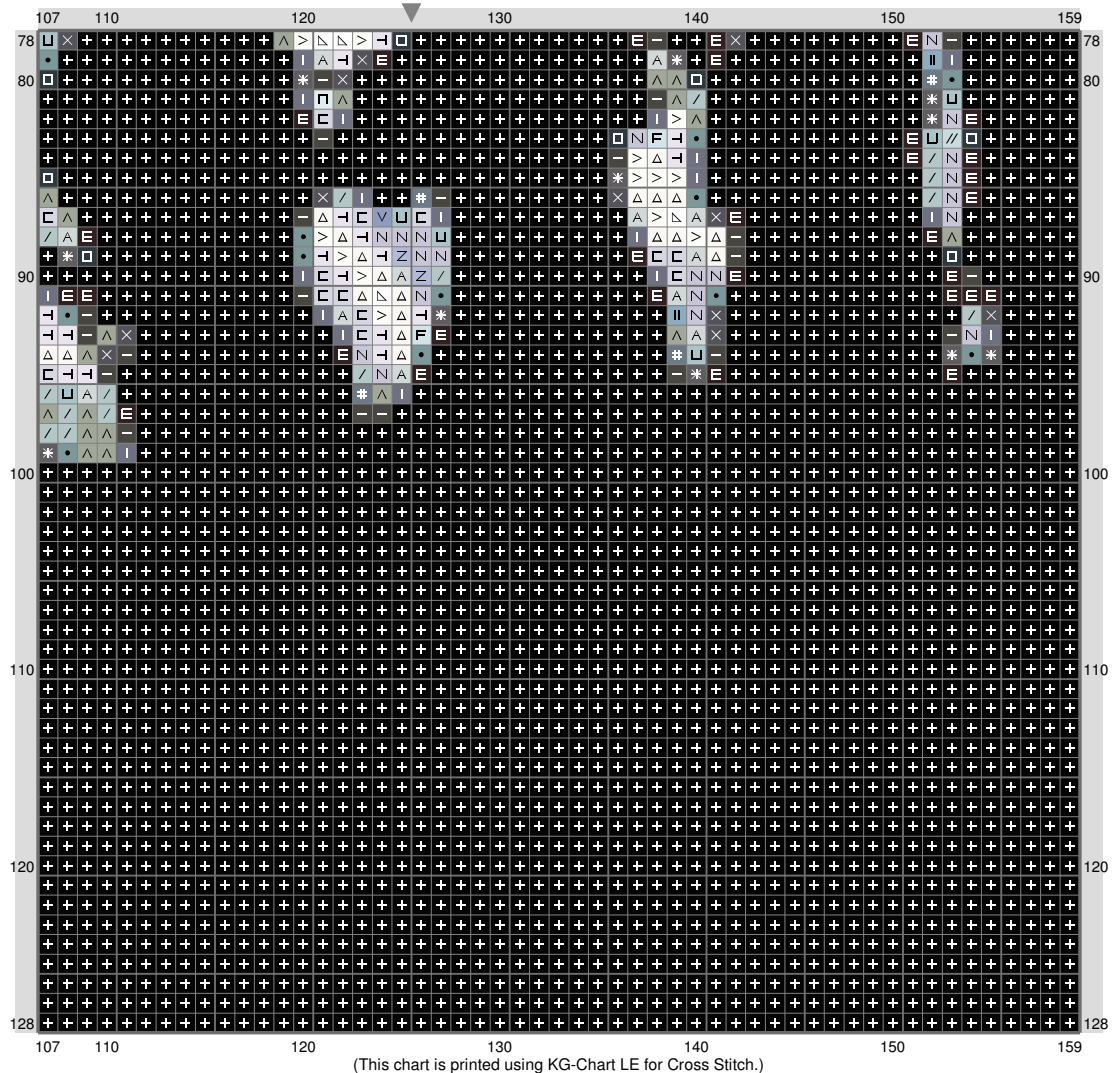


# The Hobbit

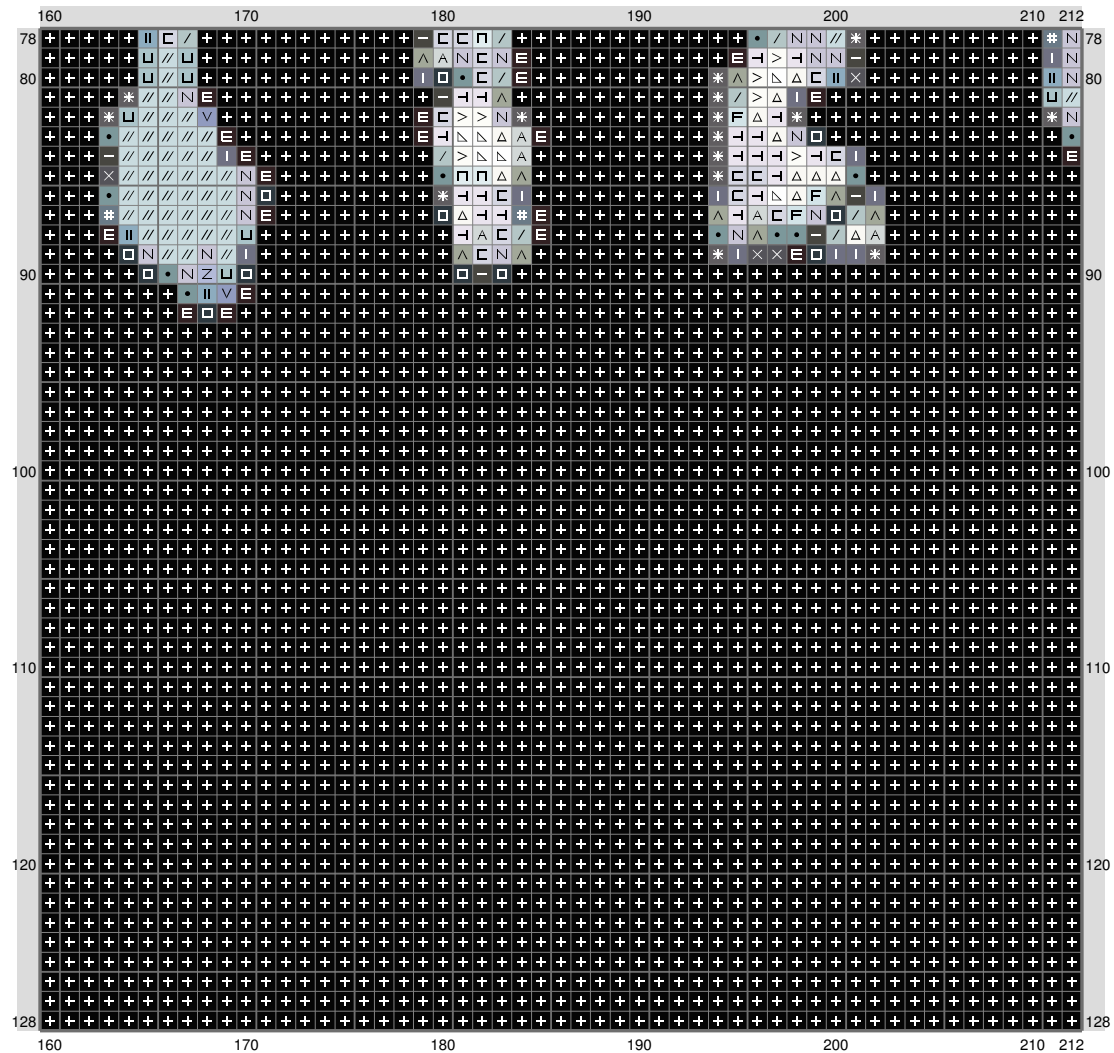




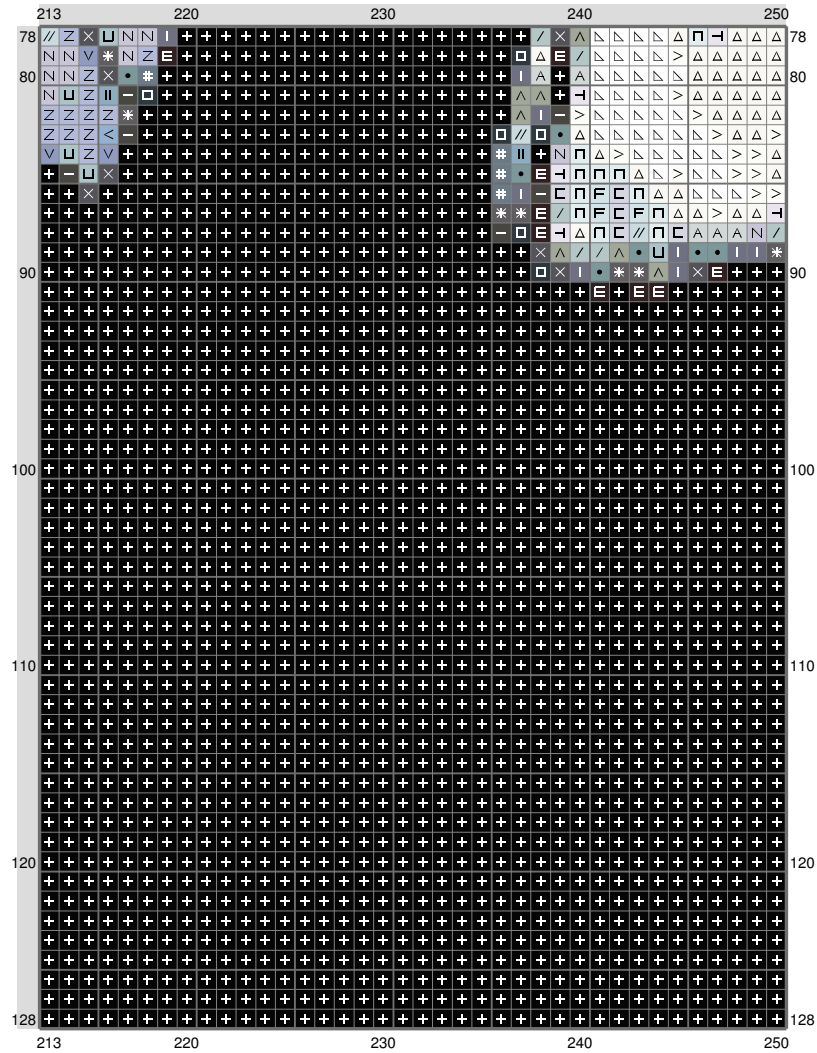
# The Hobbit



# The Hobbit



# The Hobbit



(This chart is printed using KG-Chart LE for Cross Stitch.)

# The Hobbit

Stitch Count: 250w x 128h

Finished Size: 45.35 cm x 23.22 cm (14 ct./inch)

Cloth: Aida





















Cloth's Color: White

# of colors: 28 Colors

## Color Table (DMC)

---

### Cross Stitch

	310	(12204 ct)
	939	(297 ct)
	500	(170 ct)
	3021	(153 ct)
	3799	(153 ct)
	535	(173 ct)
	317	(202 ct)
	3768	(130 ct)
	926	(355 ct)
	794	(325 ct)
	3022	(187 ct)
	931	(223 ct)
	3755	(301 ct)
	932	(385 ct)
	927	(366 ct)
	3747	(464 ct)
	318	(864 ct)
	775	(872 ct)
	928	(198 ct)
	415	(792 ct)
	3753	(1622 ct)
	828	(430 ct)
	3841	(2628 ct)
	762	(716 ct)
	3756	(2182 ct)
	3865	(1873 ct)
	BLANC	(1070 ct)
	B5200	(2665 ct)