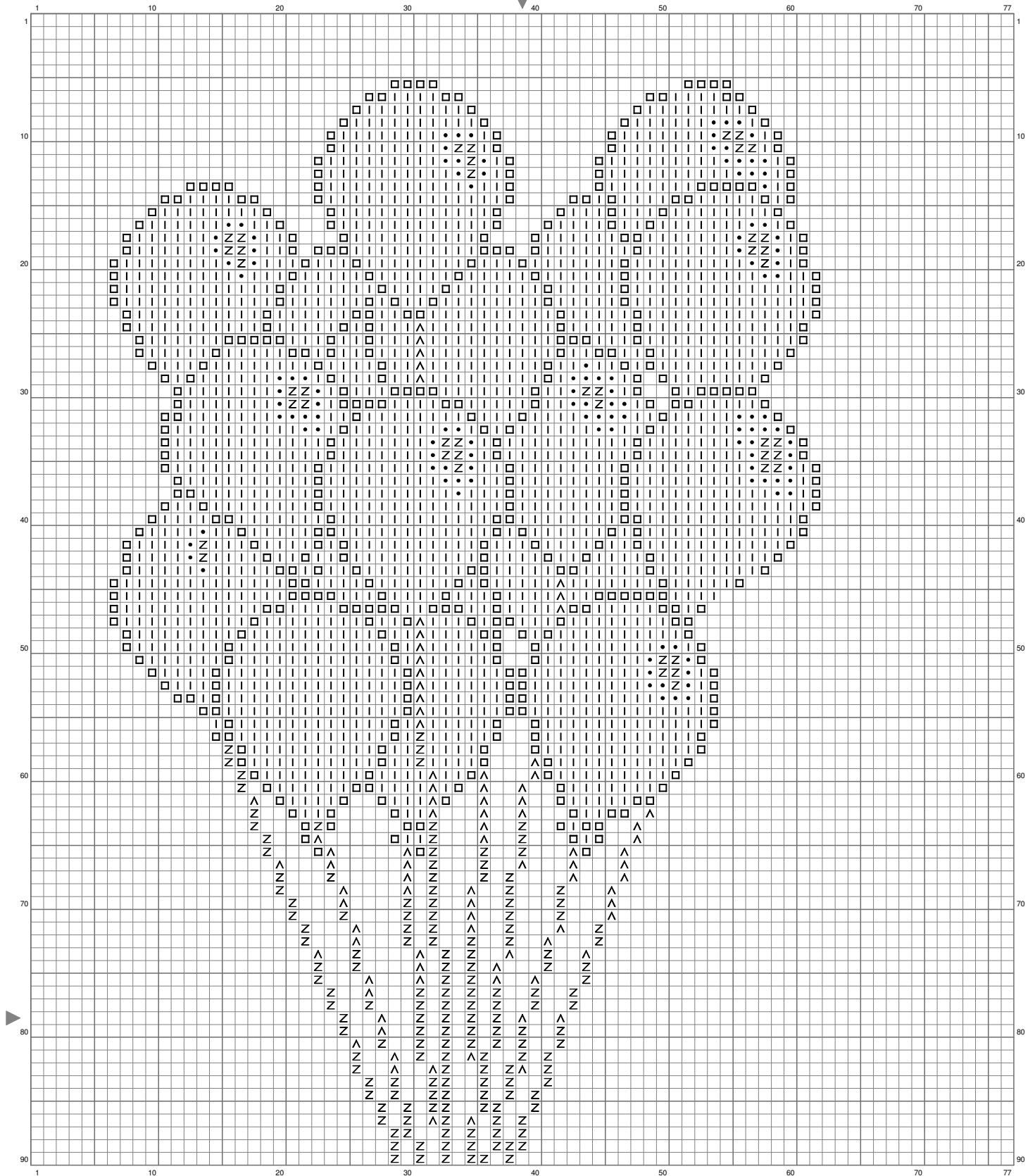
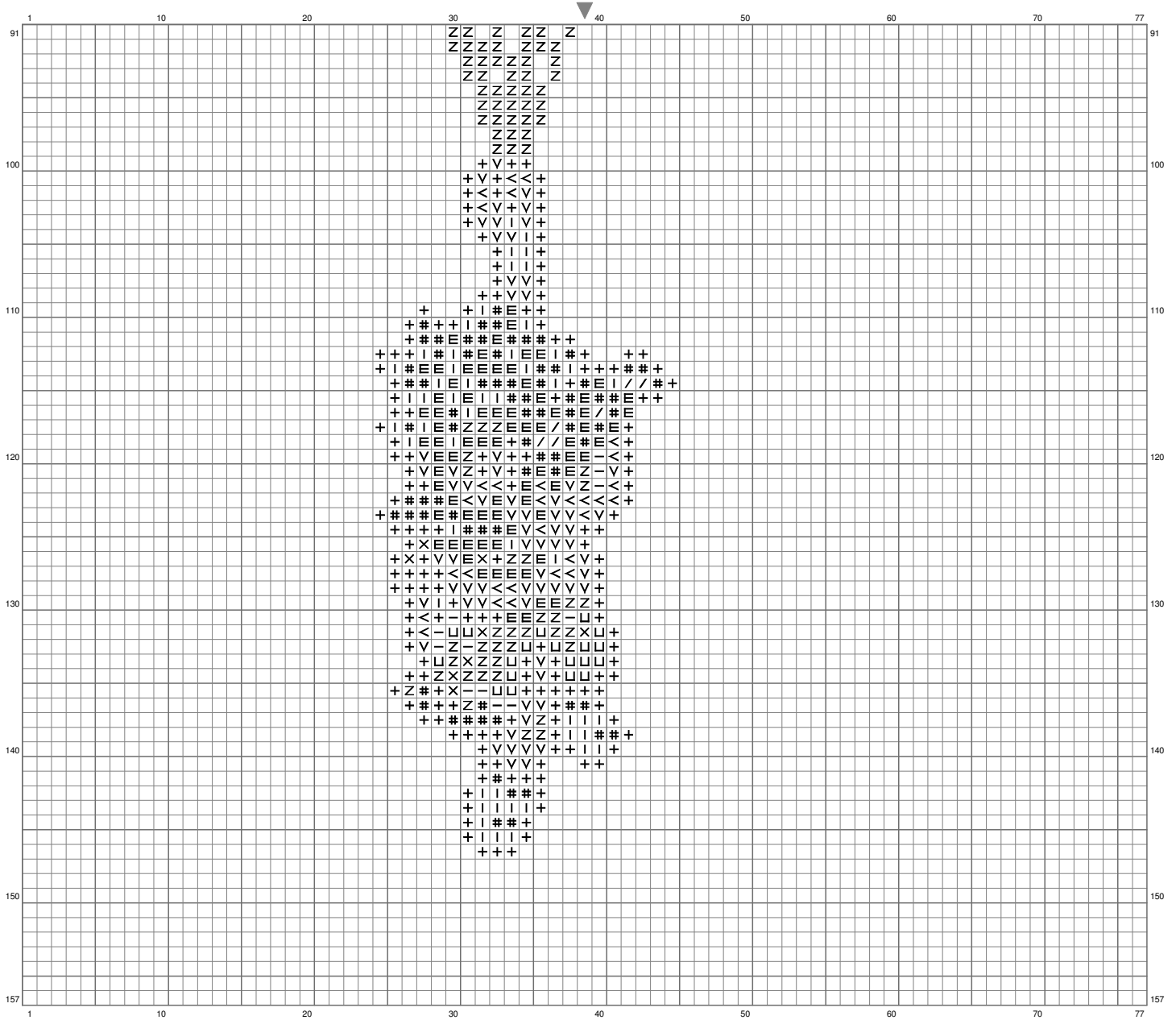


Chrono Trigger



(This chart is printed using KG-Chart LE for Cross Stitch.)

Chrono Trigger



(This chart is printed using KG-Chart LE for Cross Stitch.)

Chrono Trigger

Stitch Count:77w x 157h








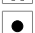






Cloth:Aida Cloth's Color:White

Finished Size:27.94 cm x 56.96 cm (14 ct./inch)

Total 14 Colors

Color Table (DMC)

Cross Stitch

	939	(173 ct)
	815	(76 ct)
	823	(457 ct)
	319	(12 ct)
	561	(8 ct)
	326	(1892 ct)
	740	(74 ct)
	3831	(123 ct)
	922	(68 ct)
	156	(87 ct)
	3827	(30 ct)
	959	(19 ct)
	444	(6 ct)
	762	(279 ct)