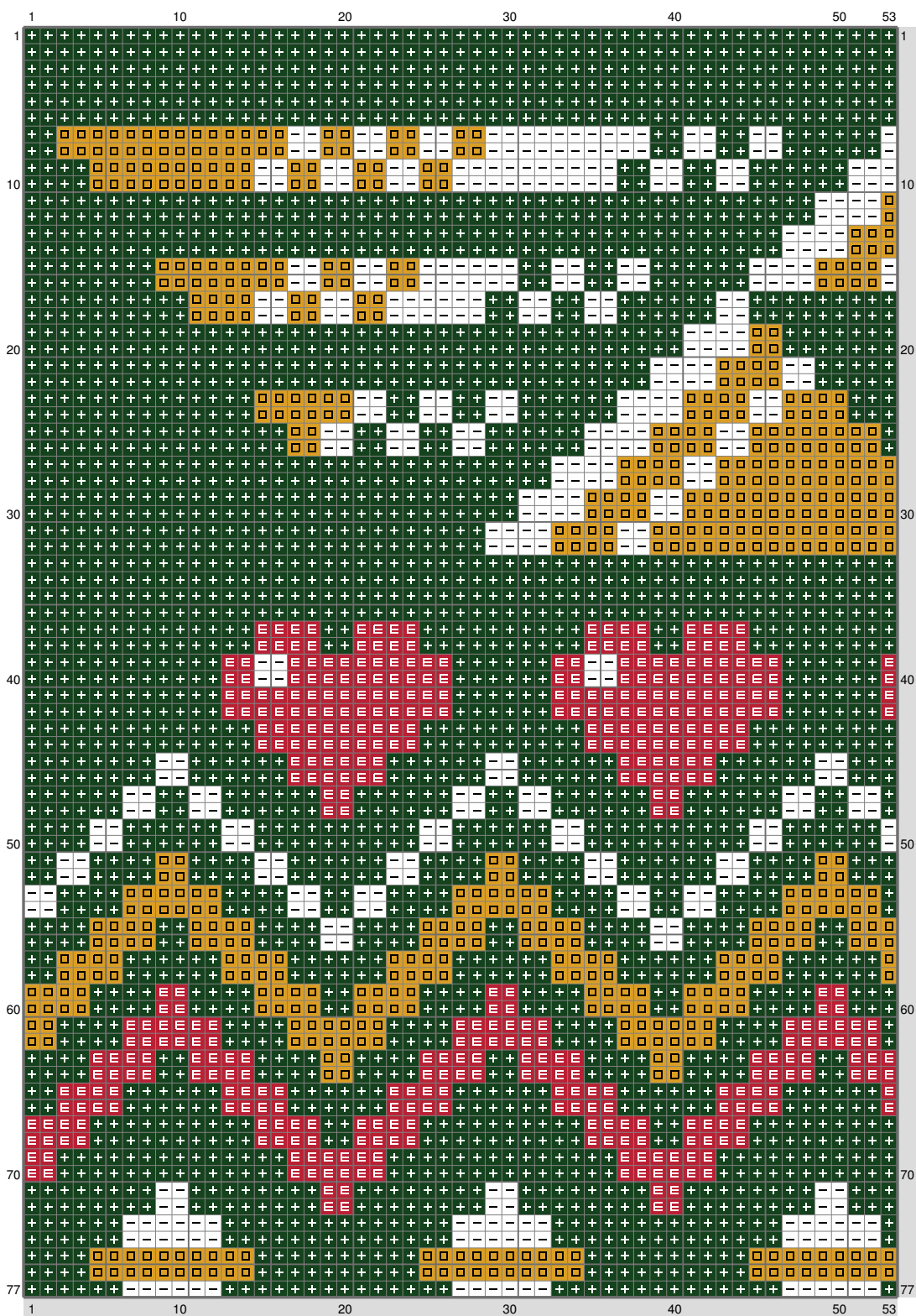


# Untitled

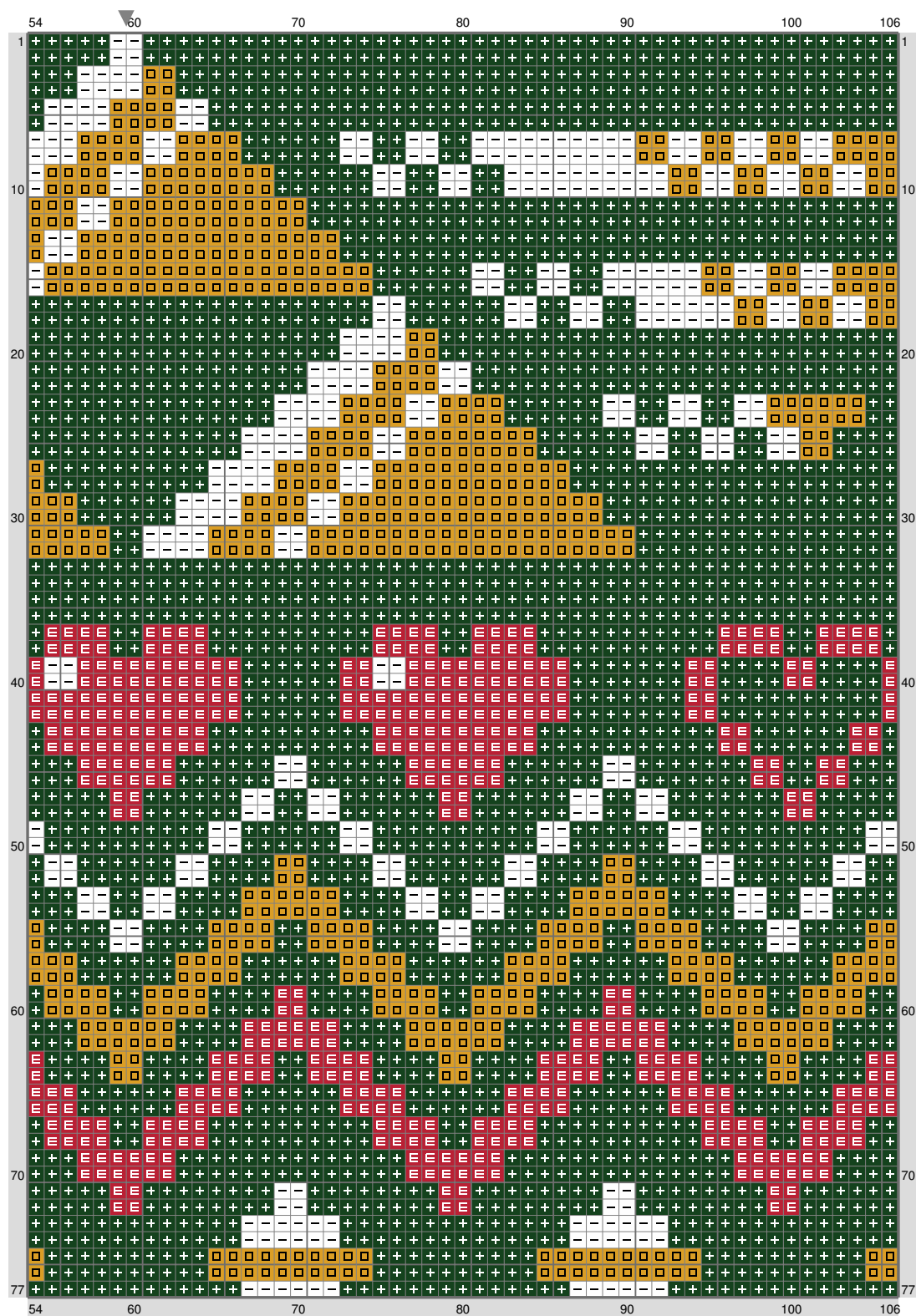
Copyright (C) 2013 Unregistered



(This chart is created/printed using KG-Chart Pro for Cross Stitch. : Unregistered )

# Untitled

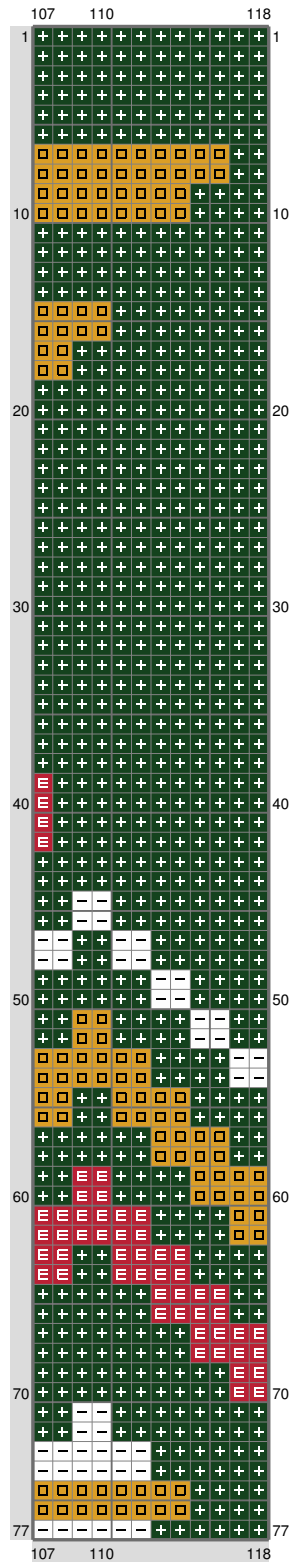
Copyright (C) 2013 Unregistered



(This chart is created/printed using KG-Chart Pro for Cross Stitch. : Unregistered )

# Untitled

Copyright (C) 2013 Unregistered



(This chart is created/printed using KG-Chart Pro for Cross Stitch. : Unregistered )

# Untitled

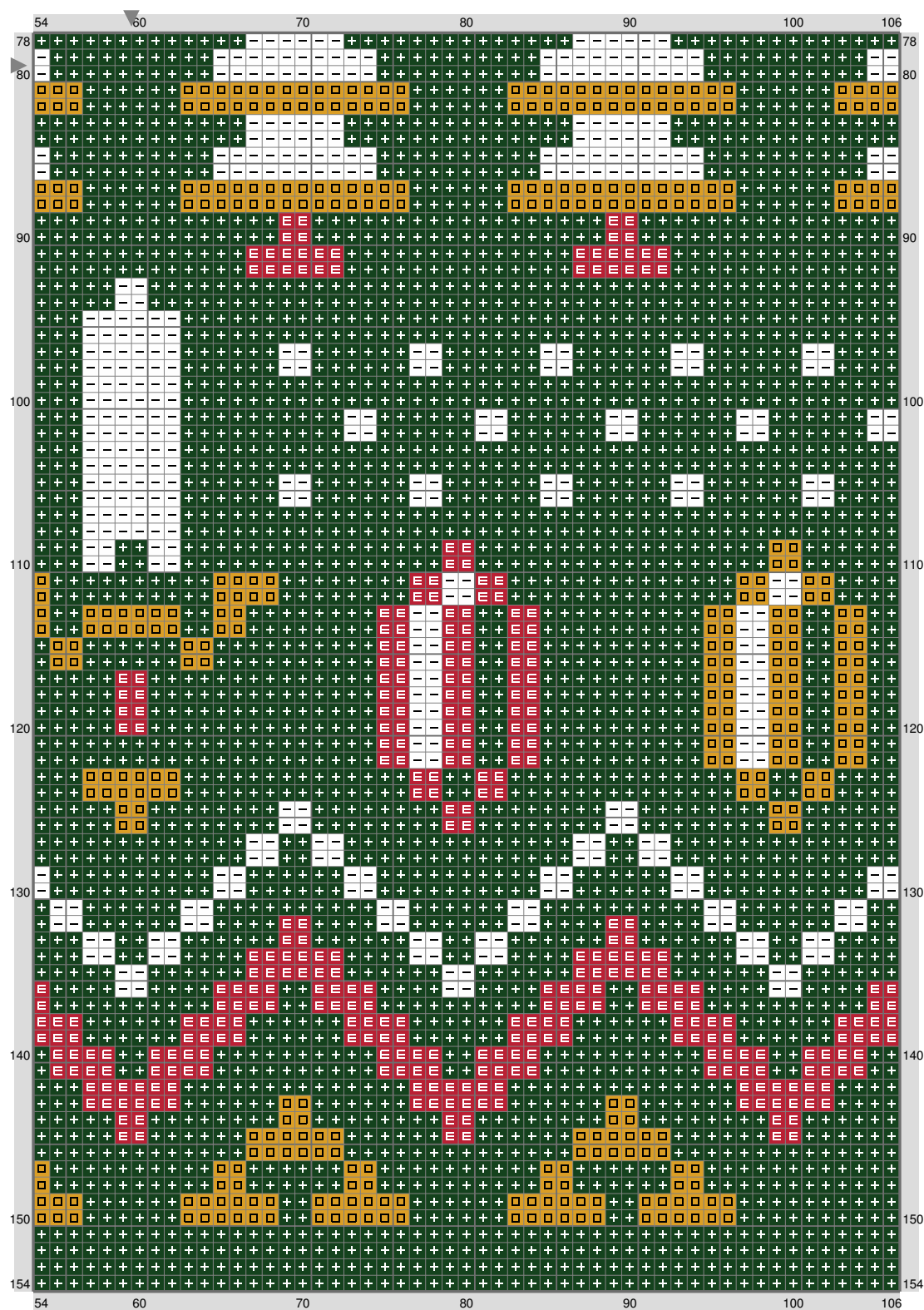
Copyright (C) 2013 Unregistered



(This chart is created/printed using KG-Chart Pro for Cross Stitch. : Unregistered )

# Untitled

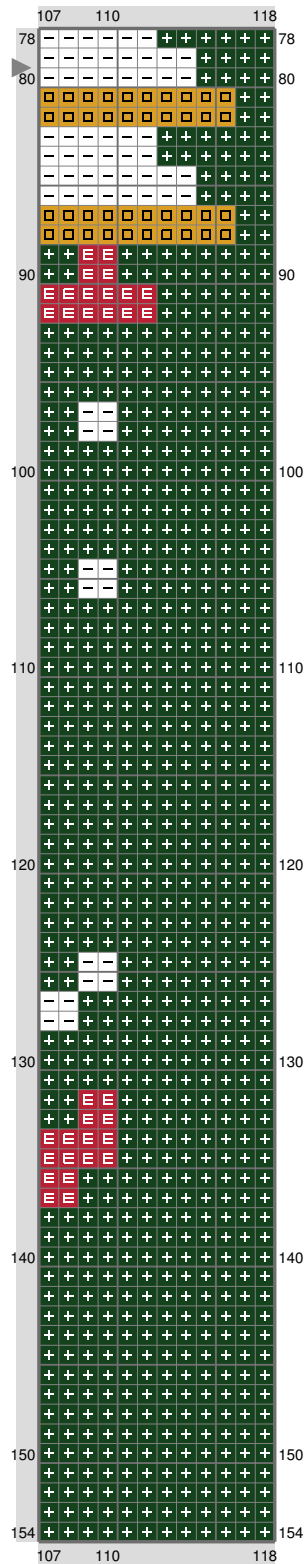
Copyright (C) 2013 Unregistered



(This chart is created/printed using KG-Chart Pro for Cross Stitch. : Unregistered )

# Untitled

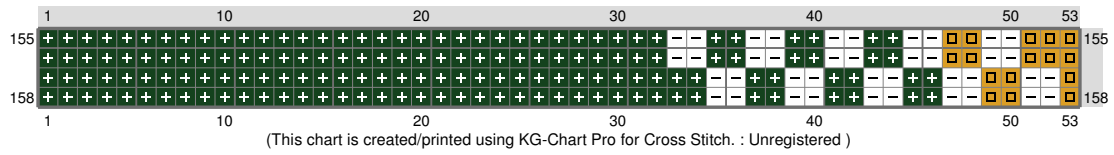
Copyright (C) 2013 Unregistered



(This chart is created/printed using KG-Chart Pro for Cross Stitch. : Unregistered )

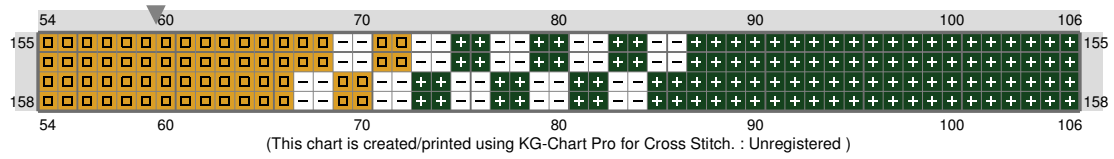
# Untitled

Copyright (C) 2013 Unregistered



# Untitled

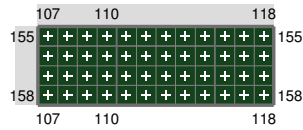
Copyright (C) 2013 Unregistered





# Untitled

Copyright (C) 2013 Unregistered



(This chart is created/printed using KG-Chart Pro for Cross Stitch. : Unregistered )

Stitch Count: 118w x 158h

Finished Size: 33.30 cm x 44.59 cm (18 ct./inch)





Cloth: Aida

Cloth's Color: White

# of colors: 4 Colors

## Color Table (DMC)

### Cross Stitch

	890	(12916 ct)
	321	(1616 ct)
	3852	(2200 ct)
	B5200	(1912 ct)