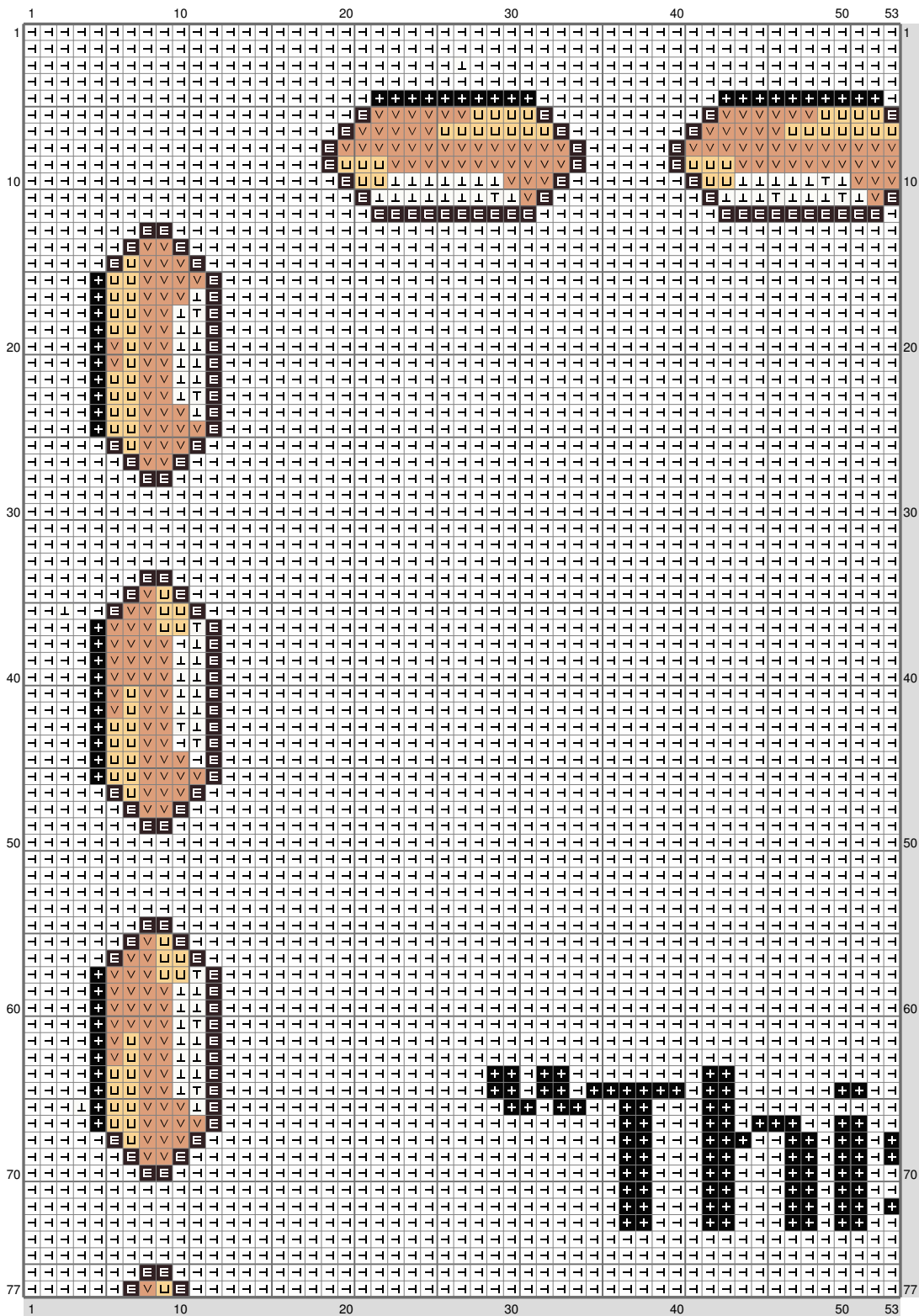


# Untitled

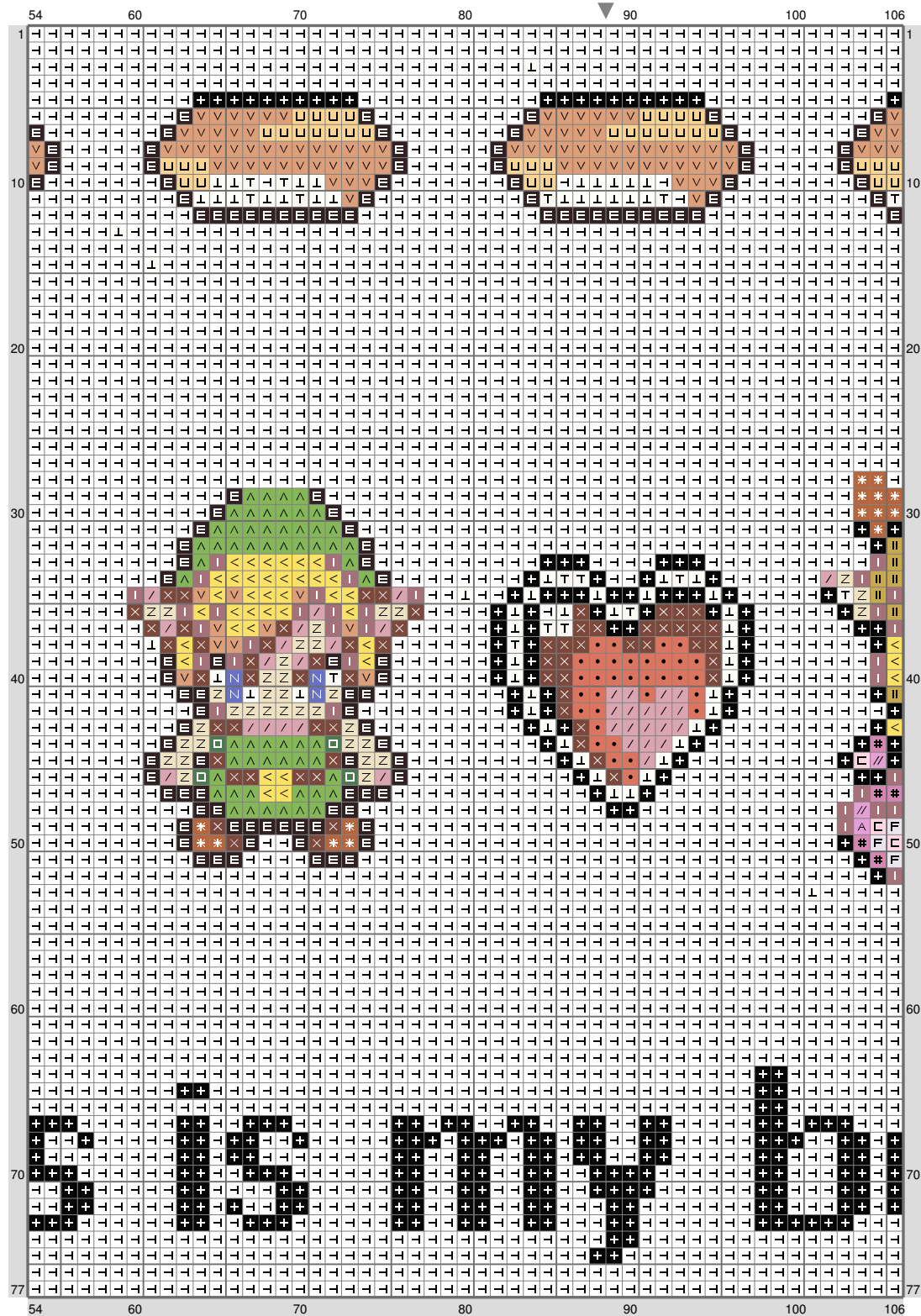


# Untitled



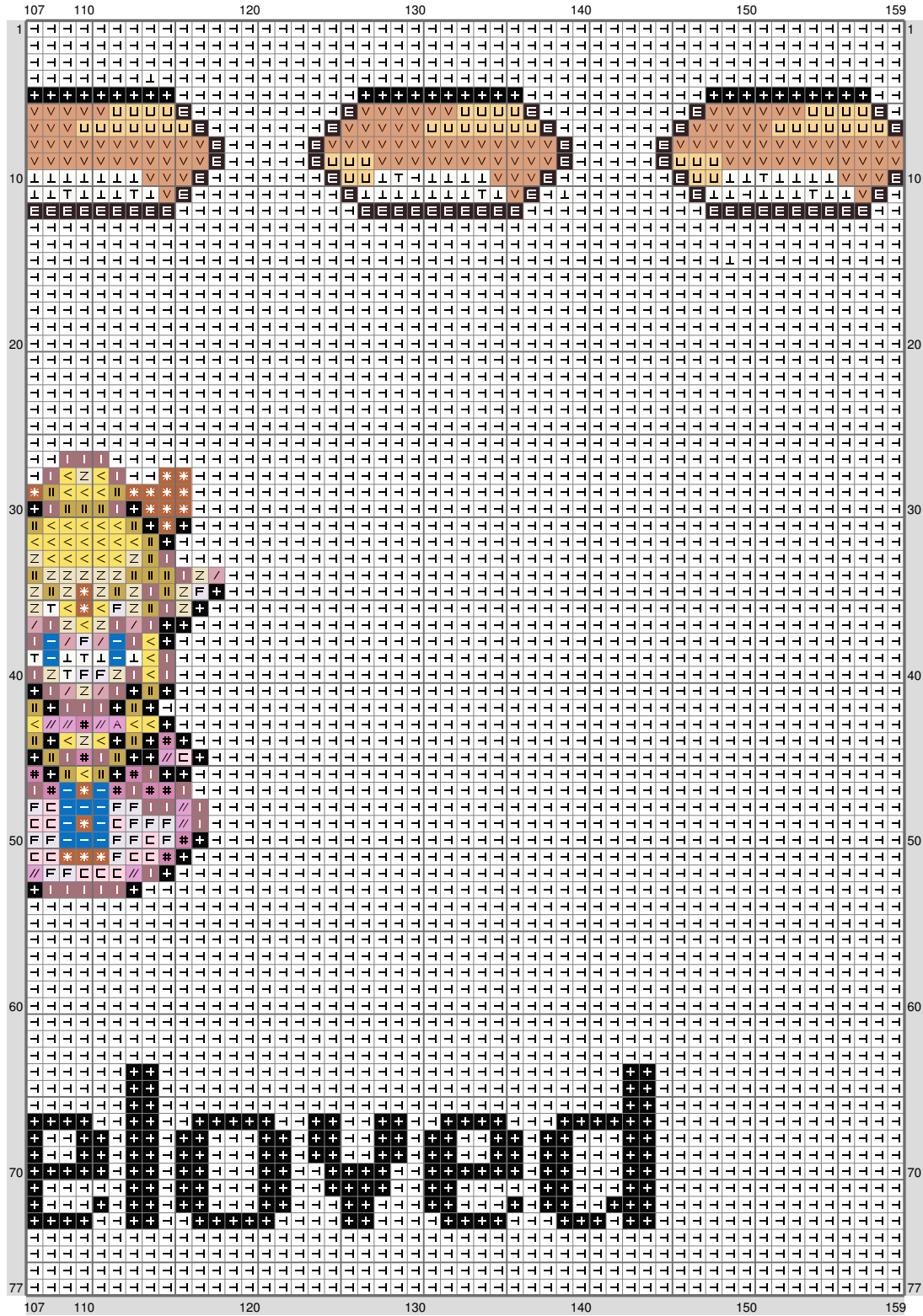
(This chart is printed using KG-Chart LE for Cross Stitch.)

# Untitled



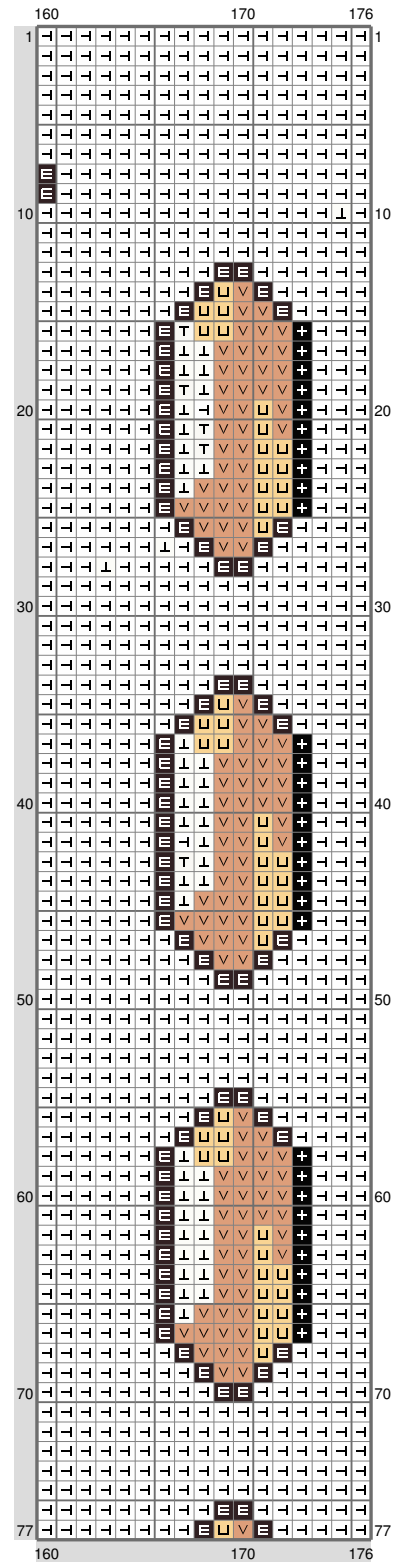
(This chart is printed using KG-Chart LE for Cross Stitch.)

# Untitled



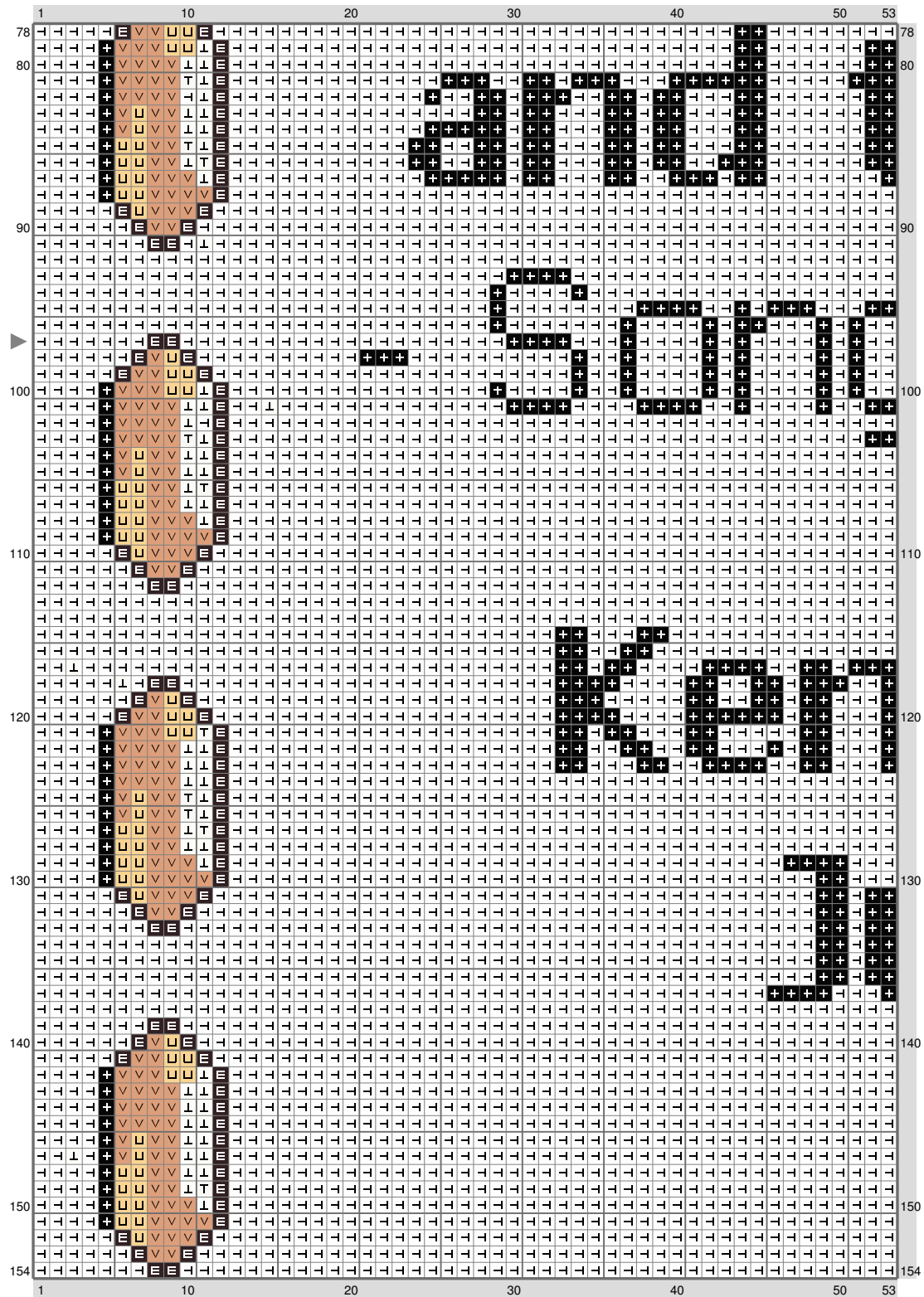
(This chart is printed using KG-Chart LE for Cross Stitch.)

# Untitled



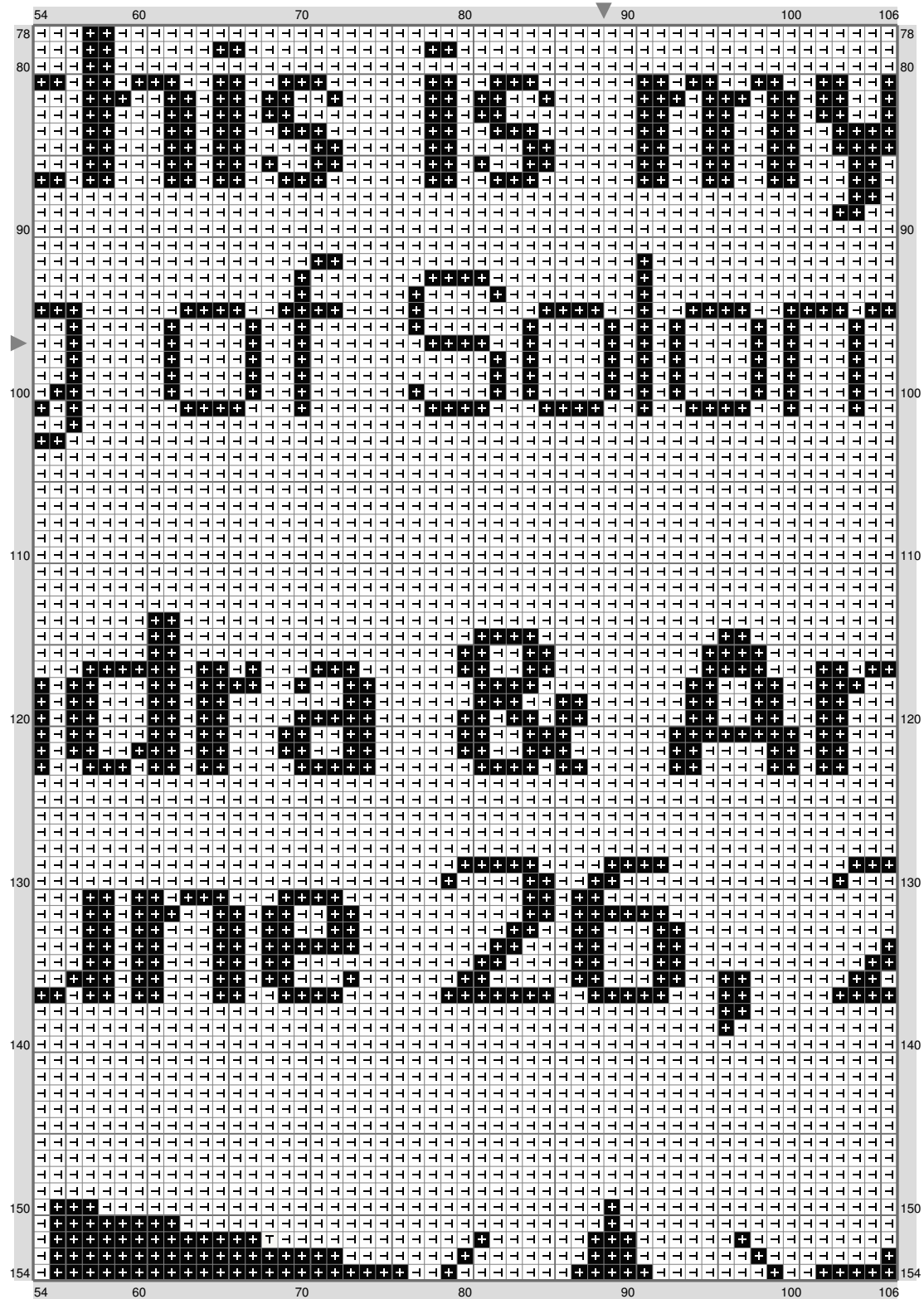
(This chart is printed using KG-Chart LE for Cross Stitch)

# Untitled



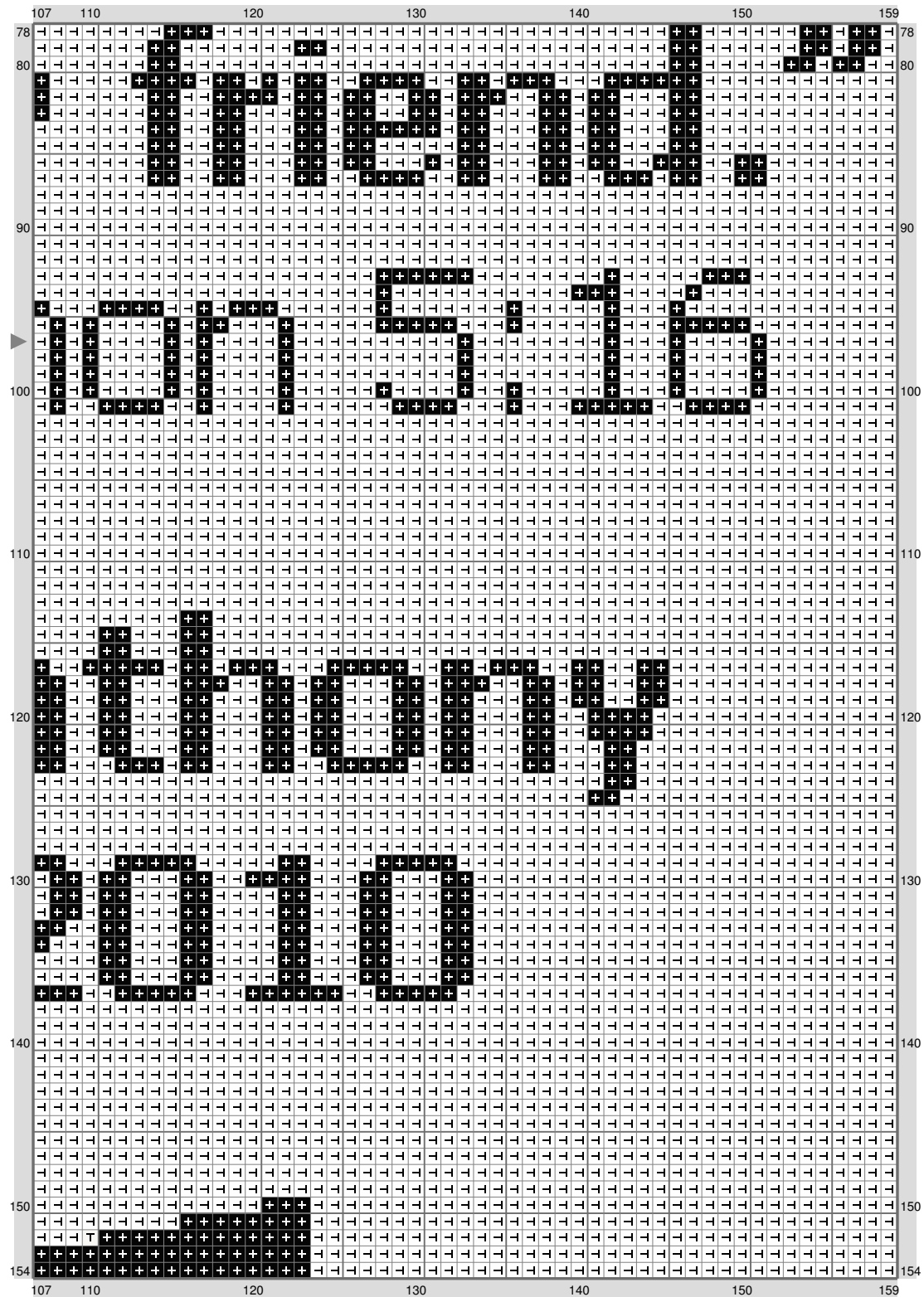
(This chart is printed using KG-Chart LE for Cross Stitch.)

# Untitled



(This chart is printed using KG-Chart LE for Cross Stitch.)

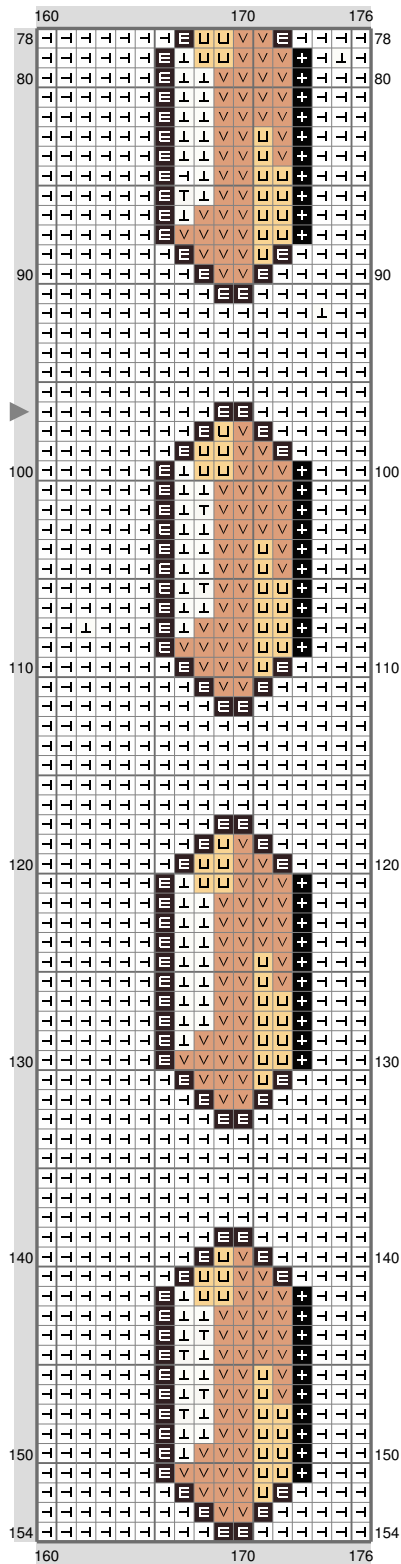
# Untitled



(This chart is printed using KG-Chart LE for Cross Stitch.)

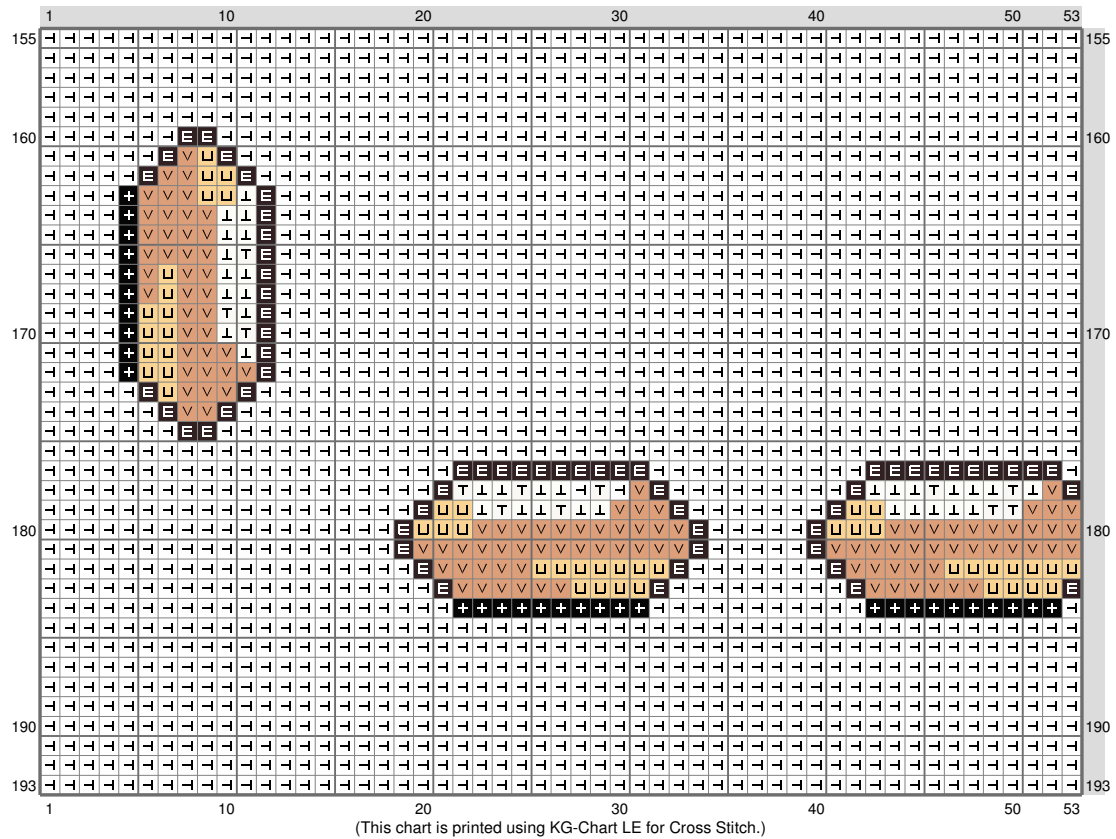


# Untitled

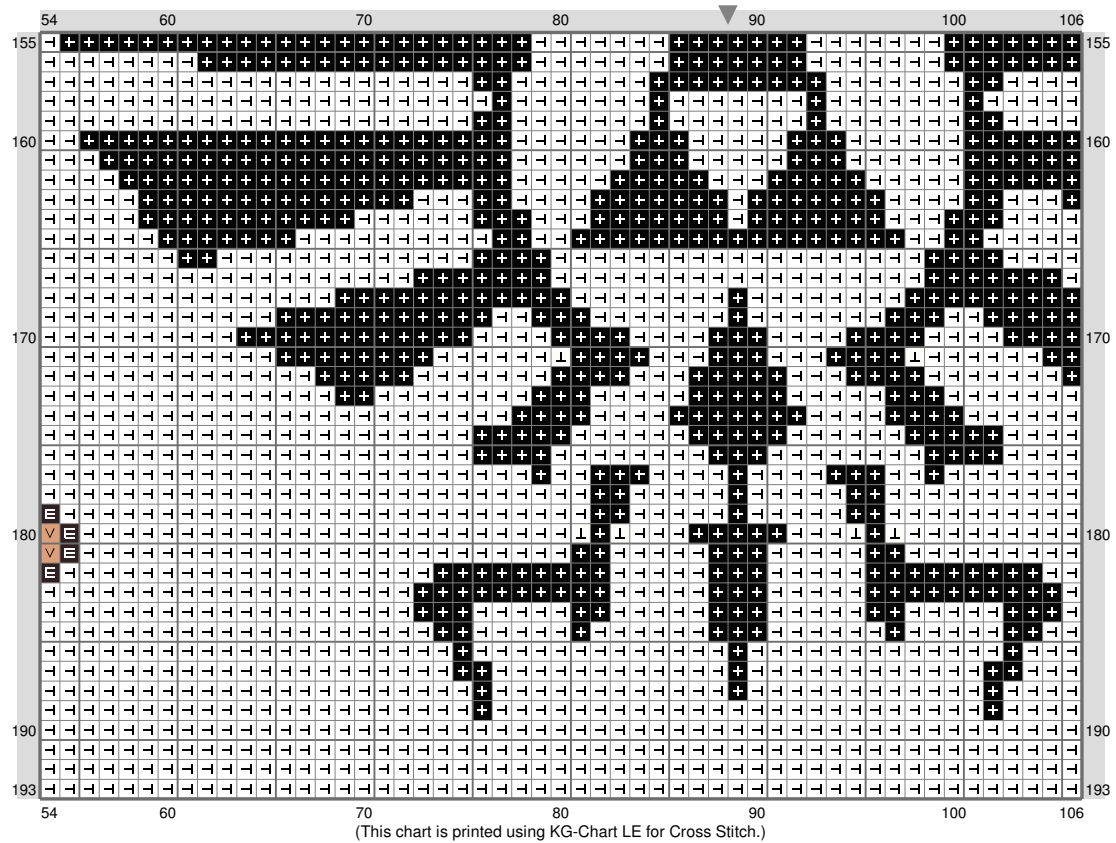


(This chart is printed using KG-Chart LE for Cross Stitch.)

# Untitled



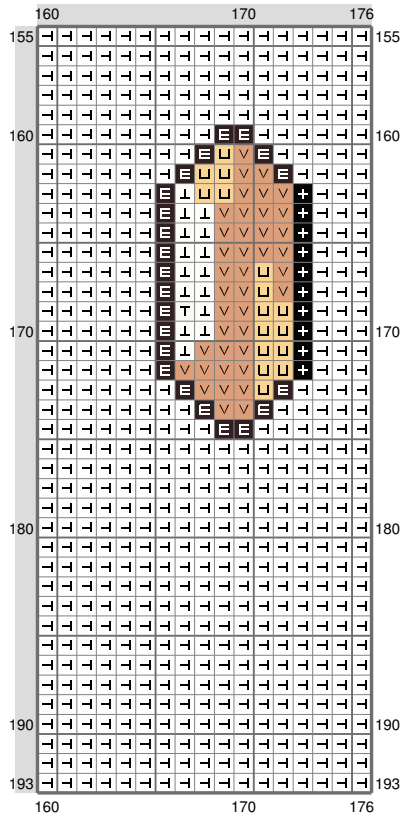
# Untitled



# Untitled



# Untitled



Stitch Count: 176w x 193h

Finished Size: 49.67 cm x 54.46 cm (18 ct./inch)

Cloth: Aida

Cloth's Color: White

# of colors: 24 Colors

### Color Table (DMC)

## Cross Stitch

+	310	(3169 ct)
E	939	(656 ct)
□	904	(4 ct)
—	3843	(14 ct)
×	801	(65 ct)
*	975	(33 ct)
I	3860	(76 ct)
#	3835	(16 ct)
●	301	(33 ct)
V	436	(1088 ct)
△	704	(58 ct)
	832	(33 ct)
<	973	(74 ct)
U	3855	(436 ct)
/	778	(42 ct)
Z	677	(58 ct)
N	798	(4 ct)
//	3608	(10 ct)
A	3836	(2 ct)
□	963	(16 ct)
F	762	(22 ct)
T	3865	(81 ct)
L	BLANC	(410 ct)
≡	B5200	(27568 ct)

(This chart is printed using KG-Chart LE for Cross Stitch.)