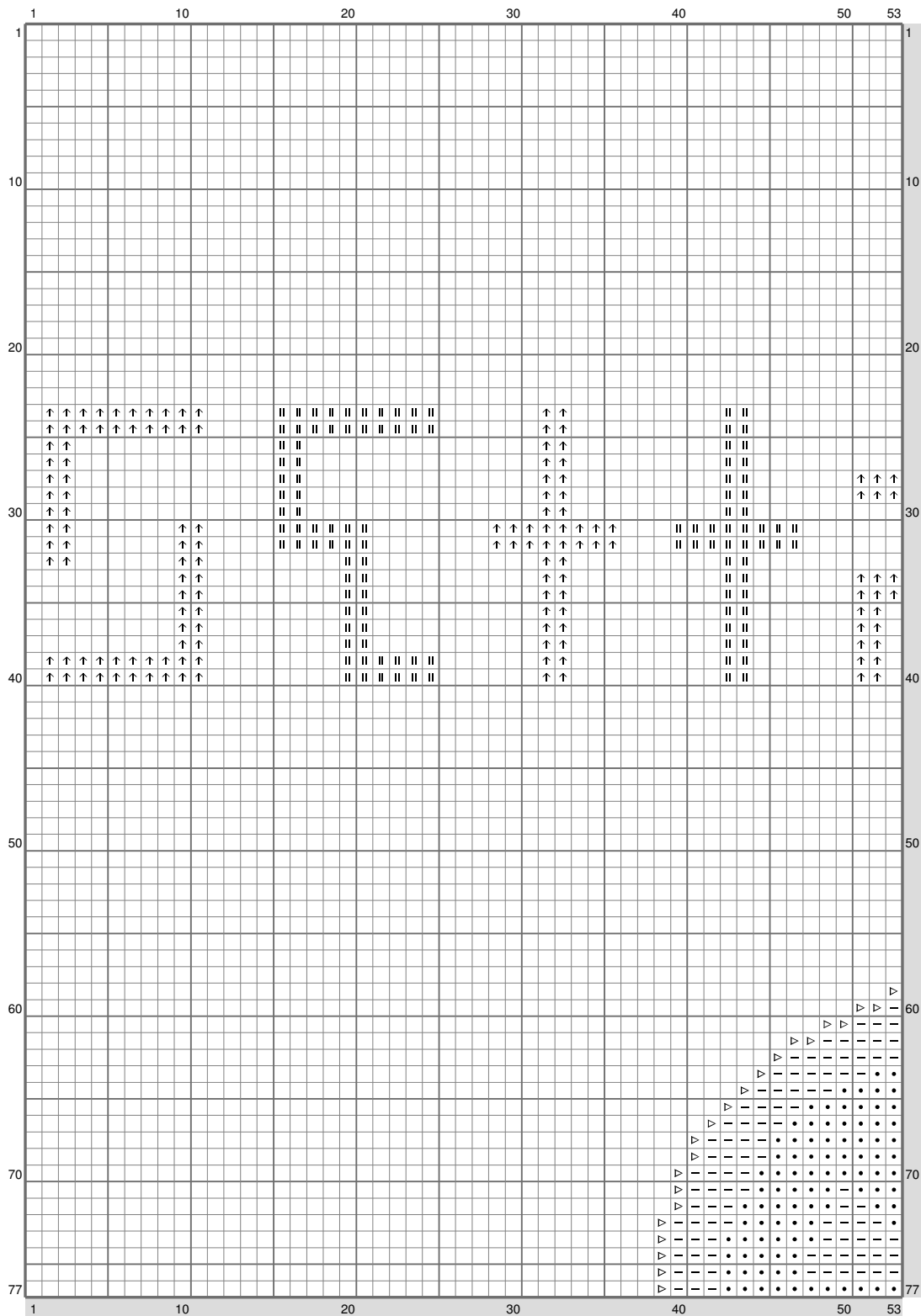
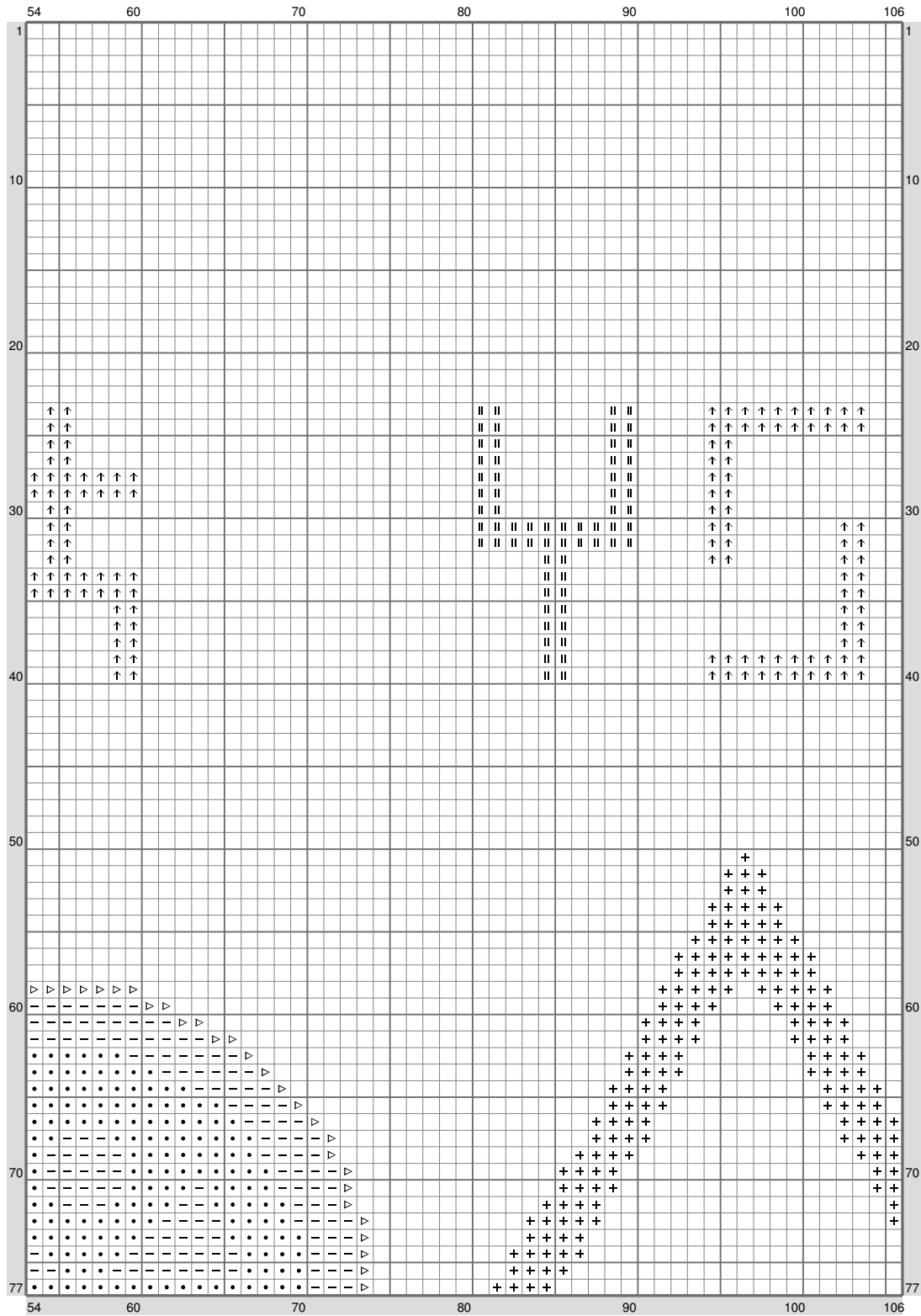


xmas12



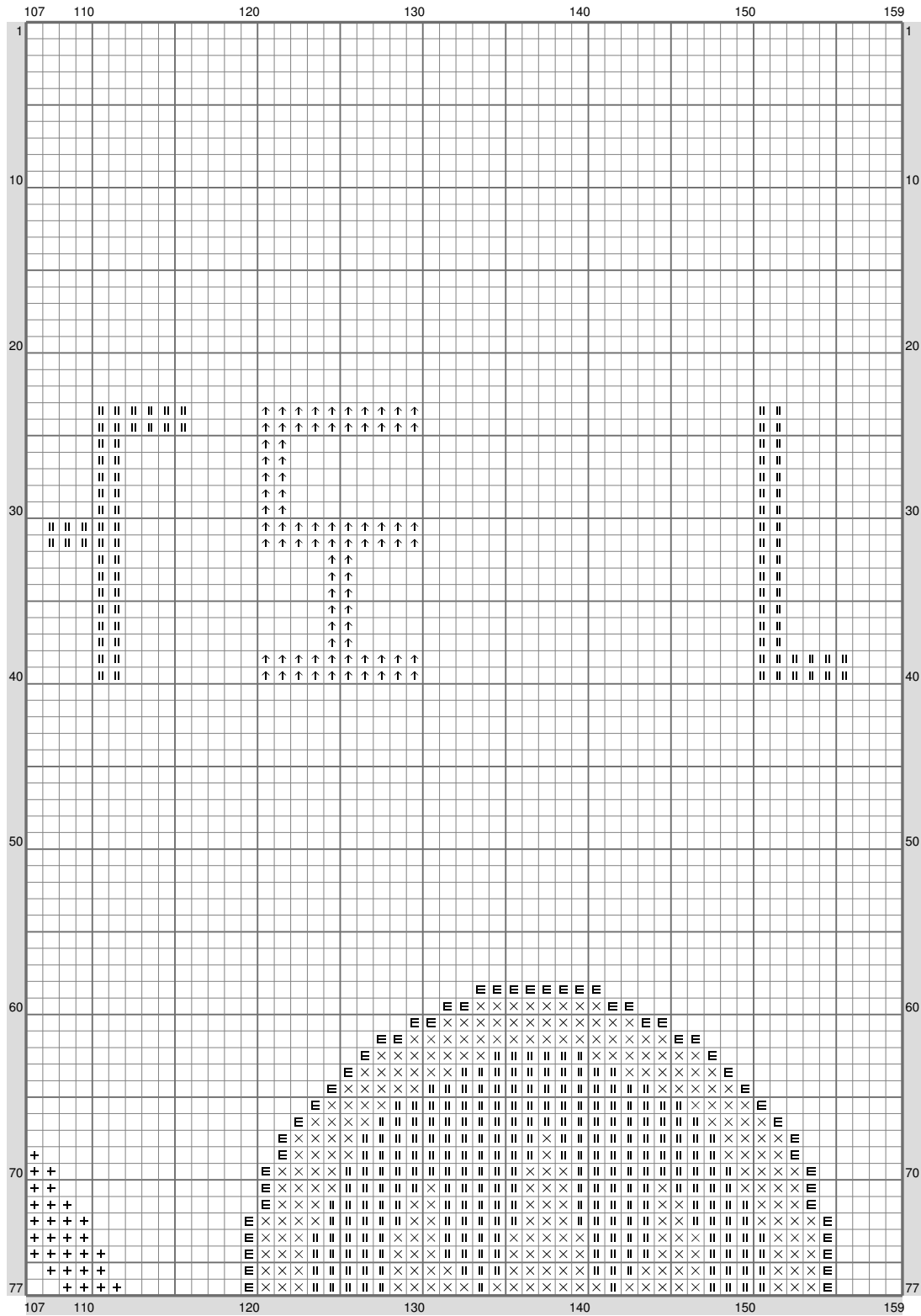
(This chart is printed using KG-Chart LE for Cross Stitch.)

xmas12



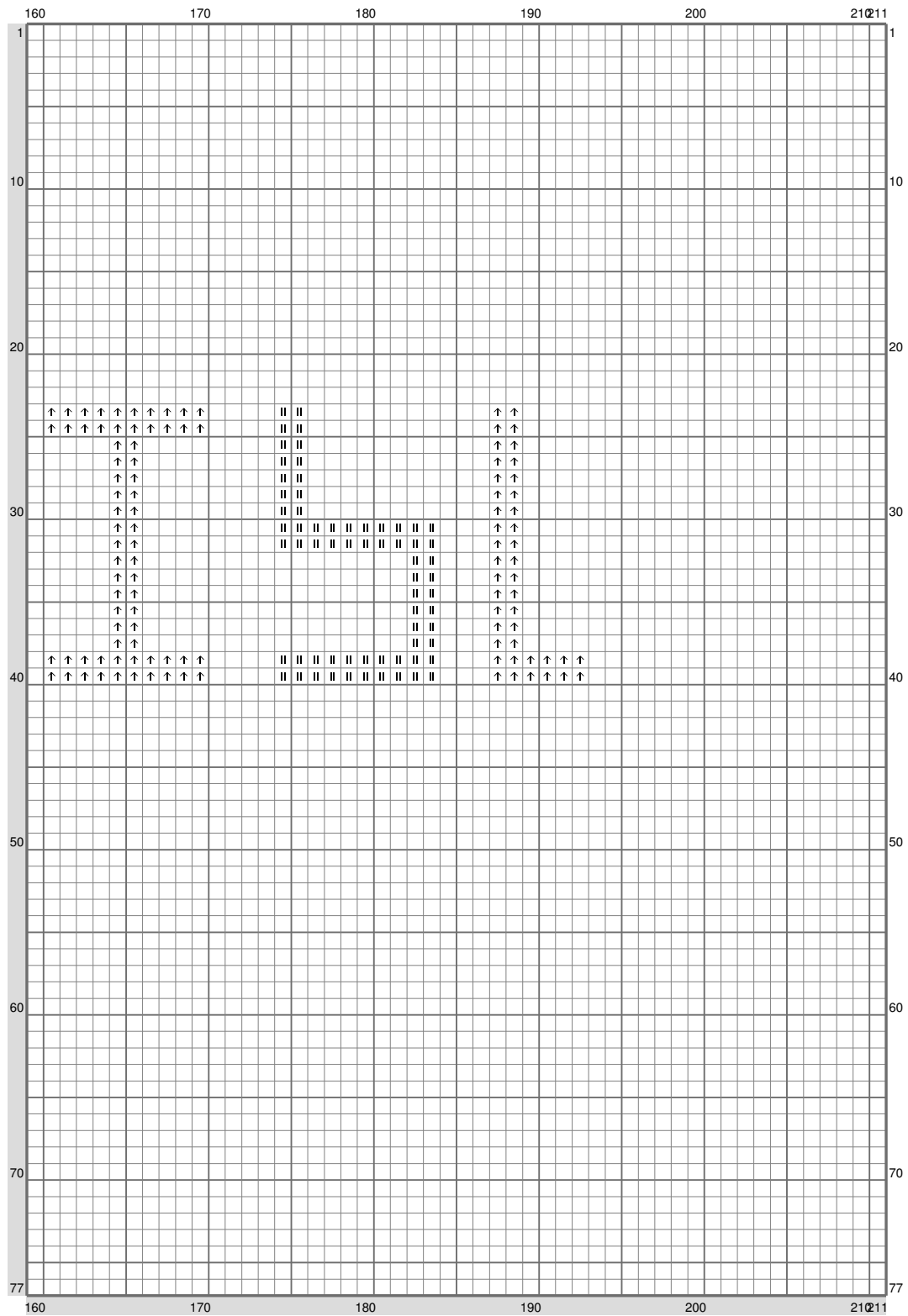
(This chart is printed using KG-Chart LE for Cross Stitch.)

xmas12



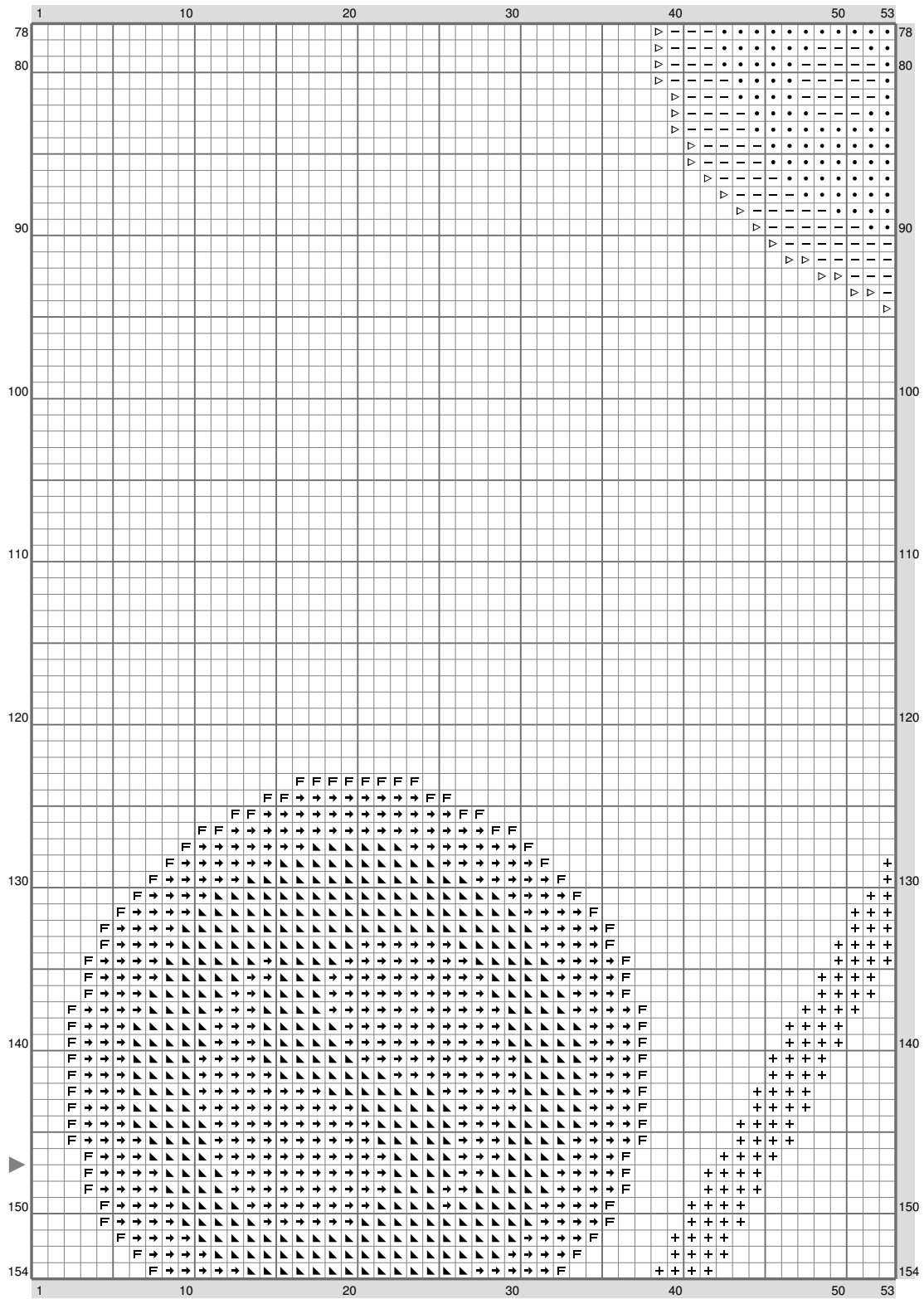
(This chart is printed using KG-Chart LE for Cross Stitch.)

xmas12



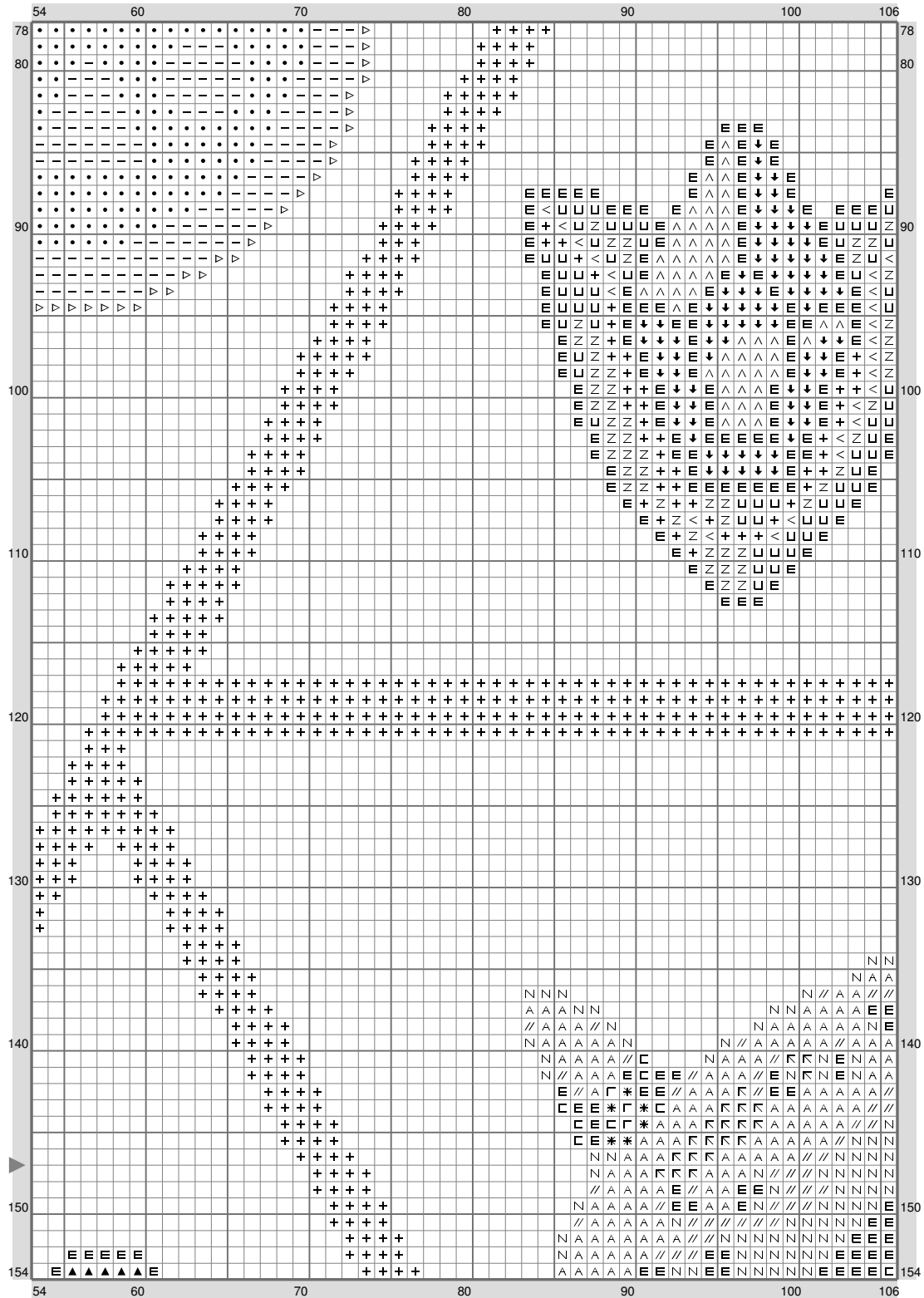
(This chart is printed using KG-Chart LE for Cross Stitch.)

xmas12



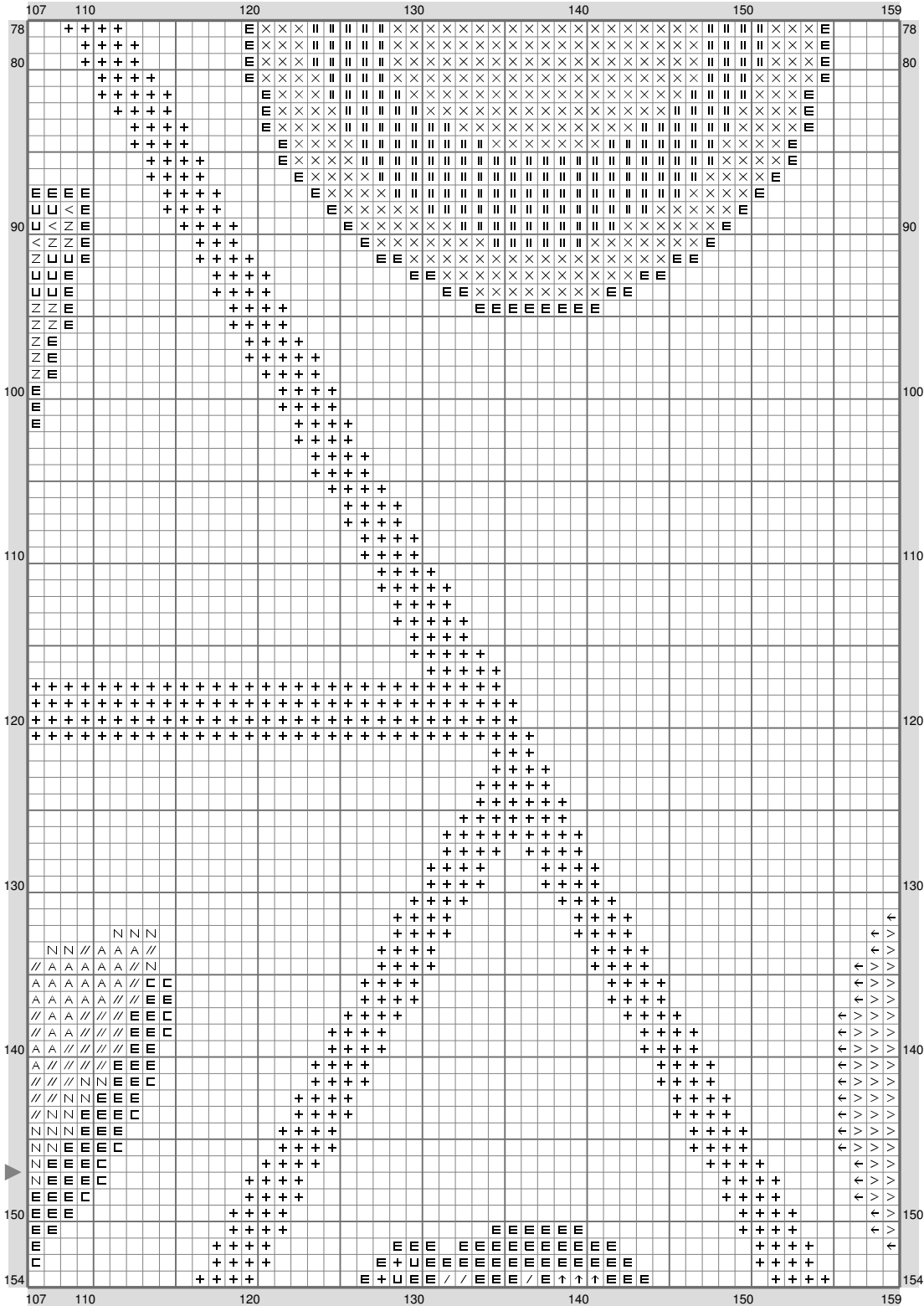
(This chart is printed using KG-Chart LE for Cross Stitch.)

xmas12



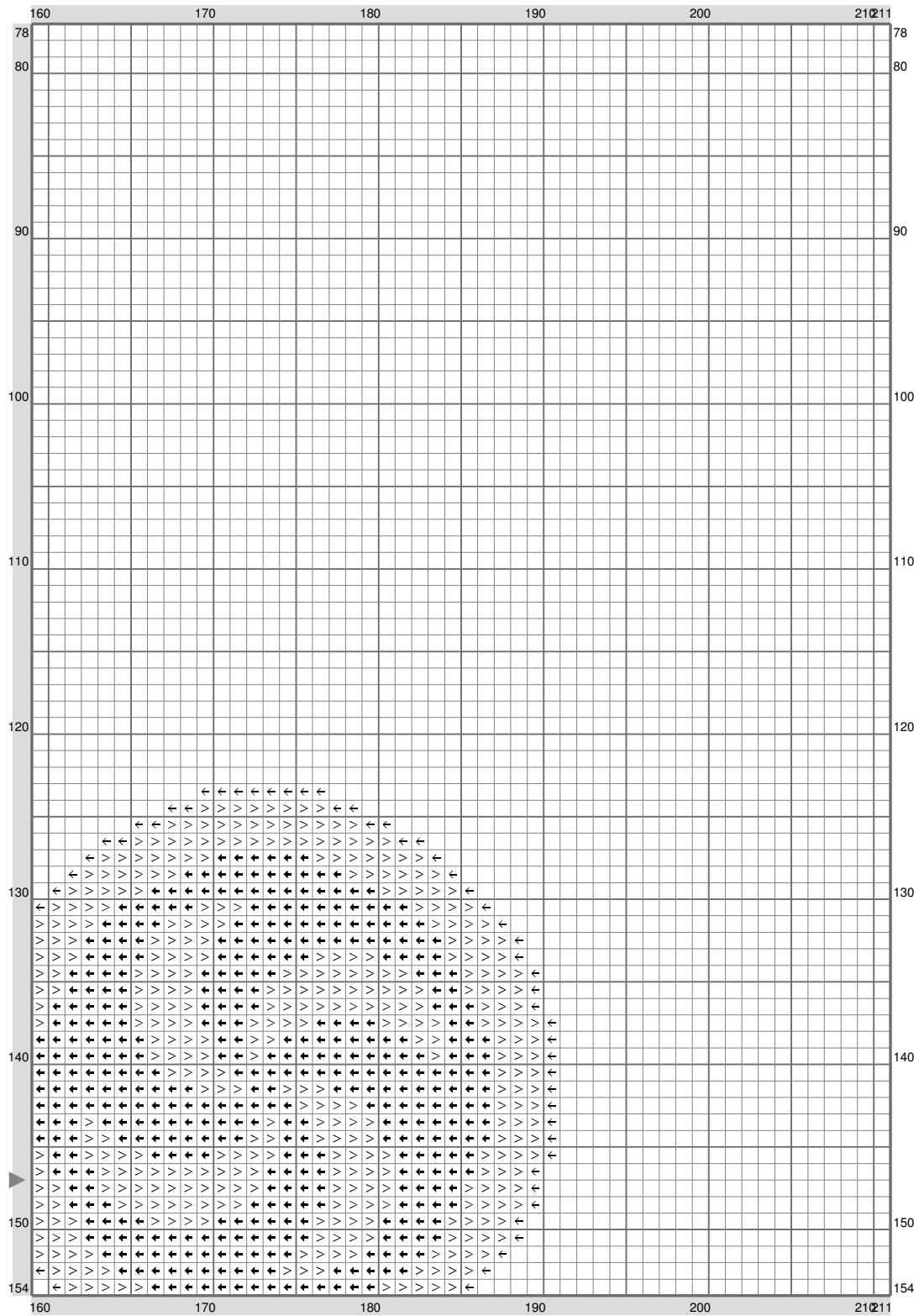
(This chart is printed using KG-Chart LE for Cross Stitch.)

xmas12



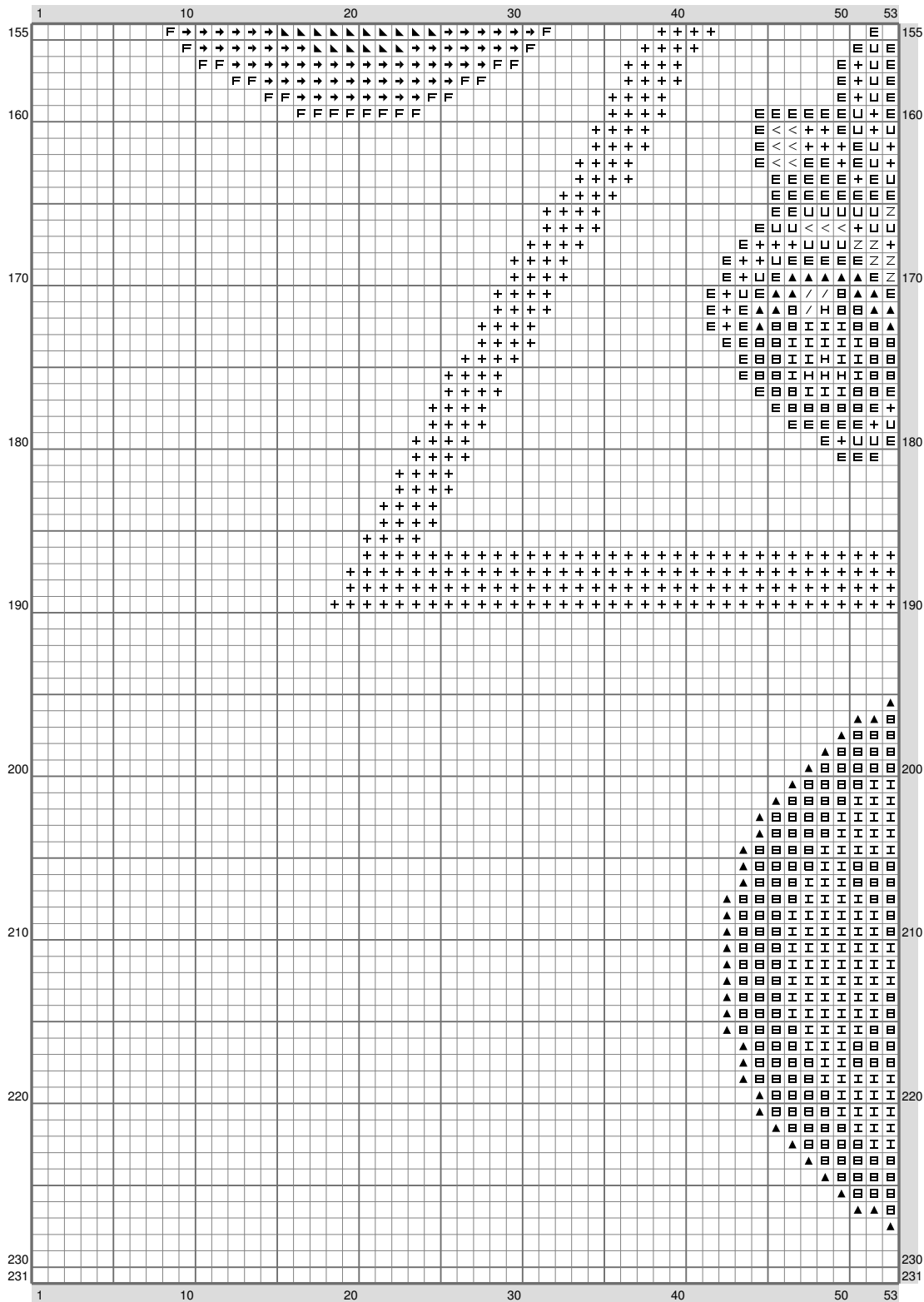
(This chart is printed using KG-Chart LE for Cross Stitch.)

xmas12



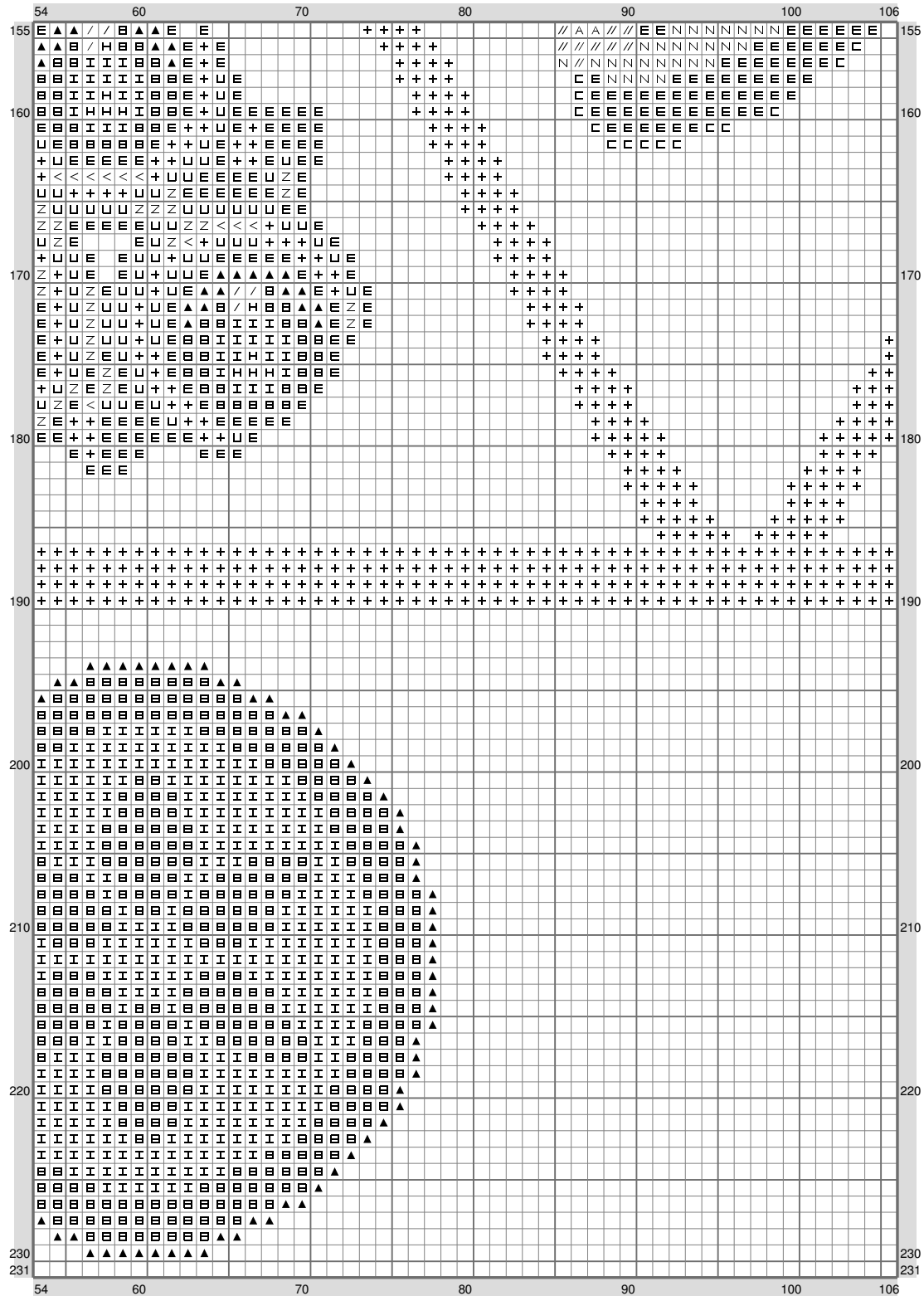
(This chart is printed using KG-Chart LE for Cross Stitch.)

xmas12

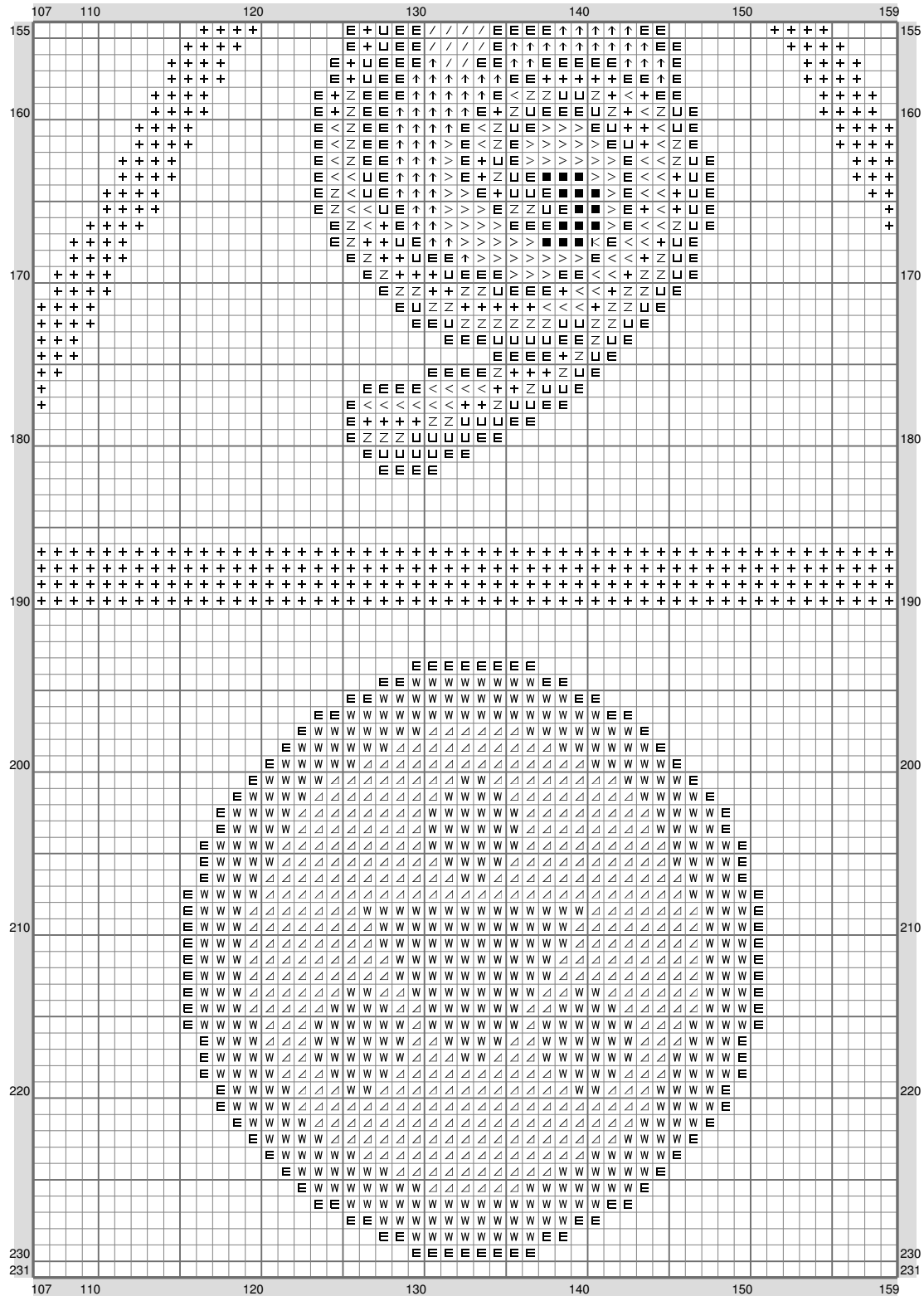


(This chart is printed using KG-Chart LE for Cross Stitch.)

xmas12

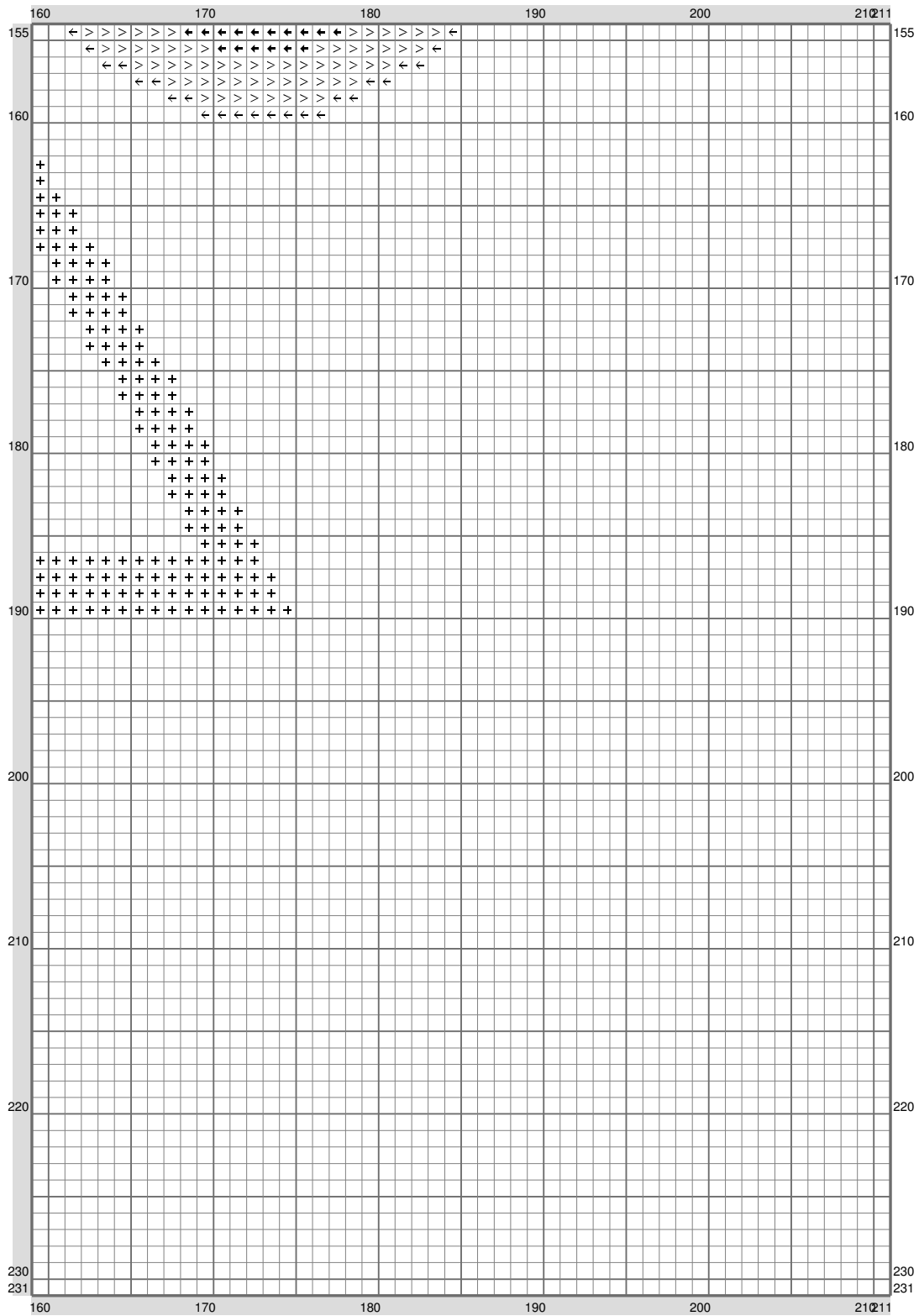


xmas12

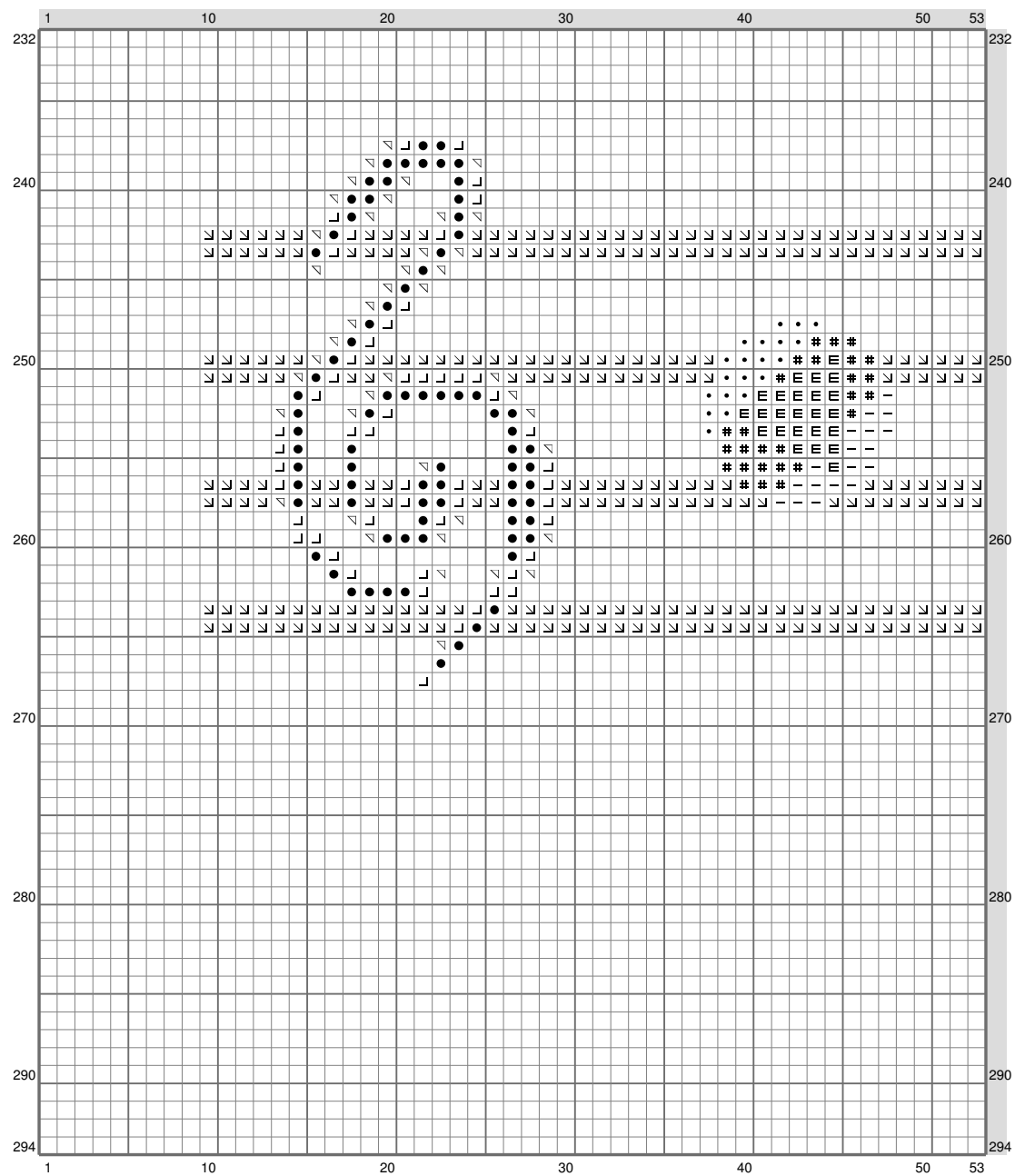


(This chart is printed using KG-Chart LE for Cross Stitch.)

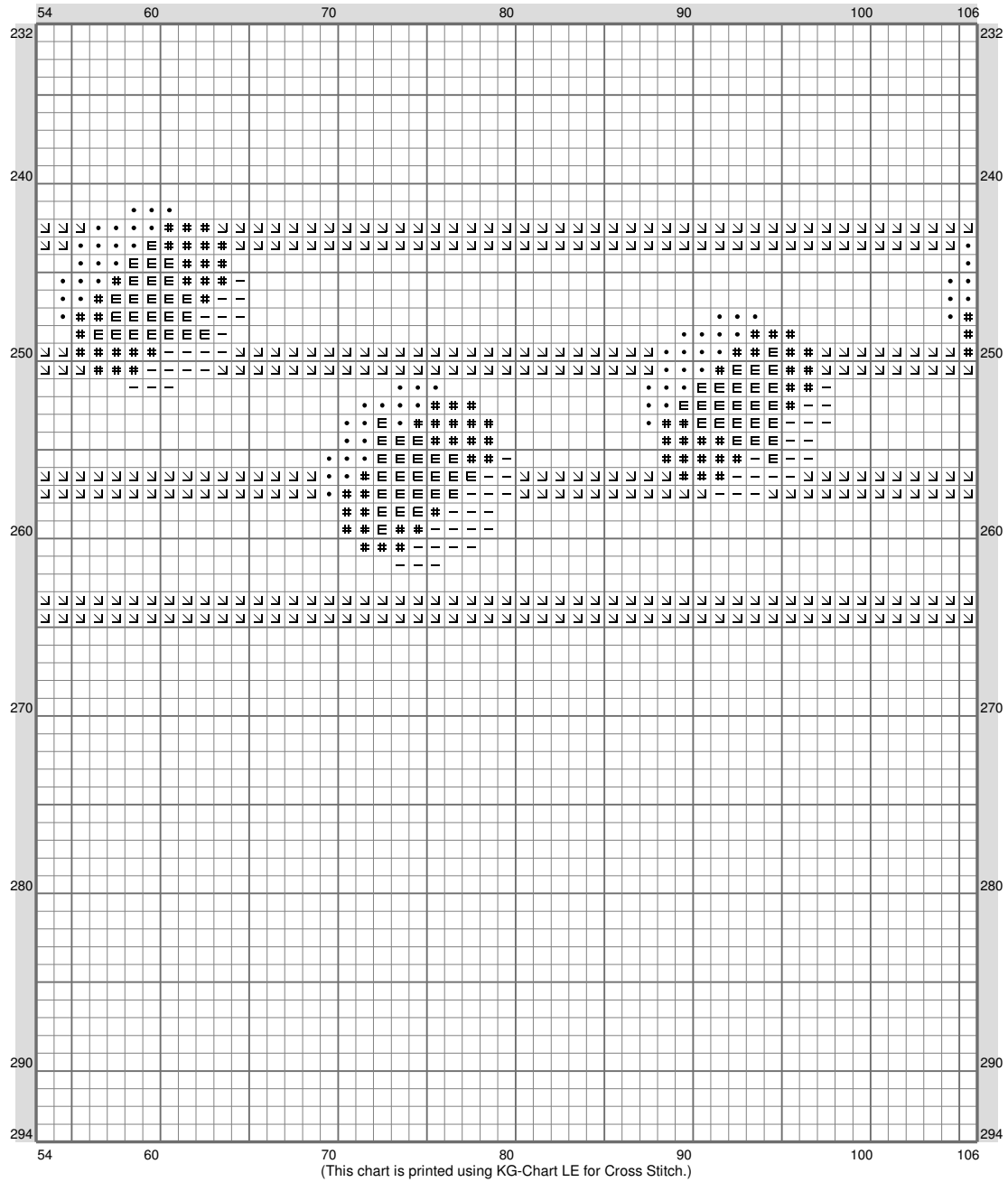
xmas12



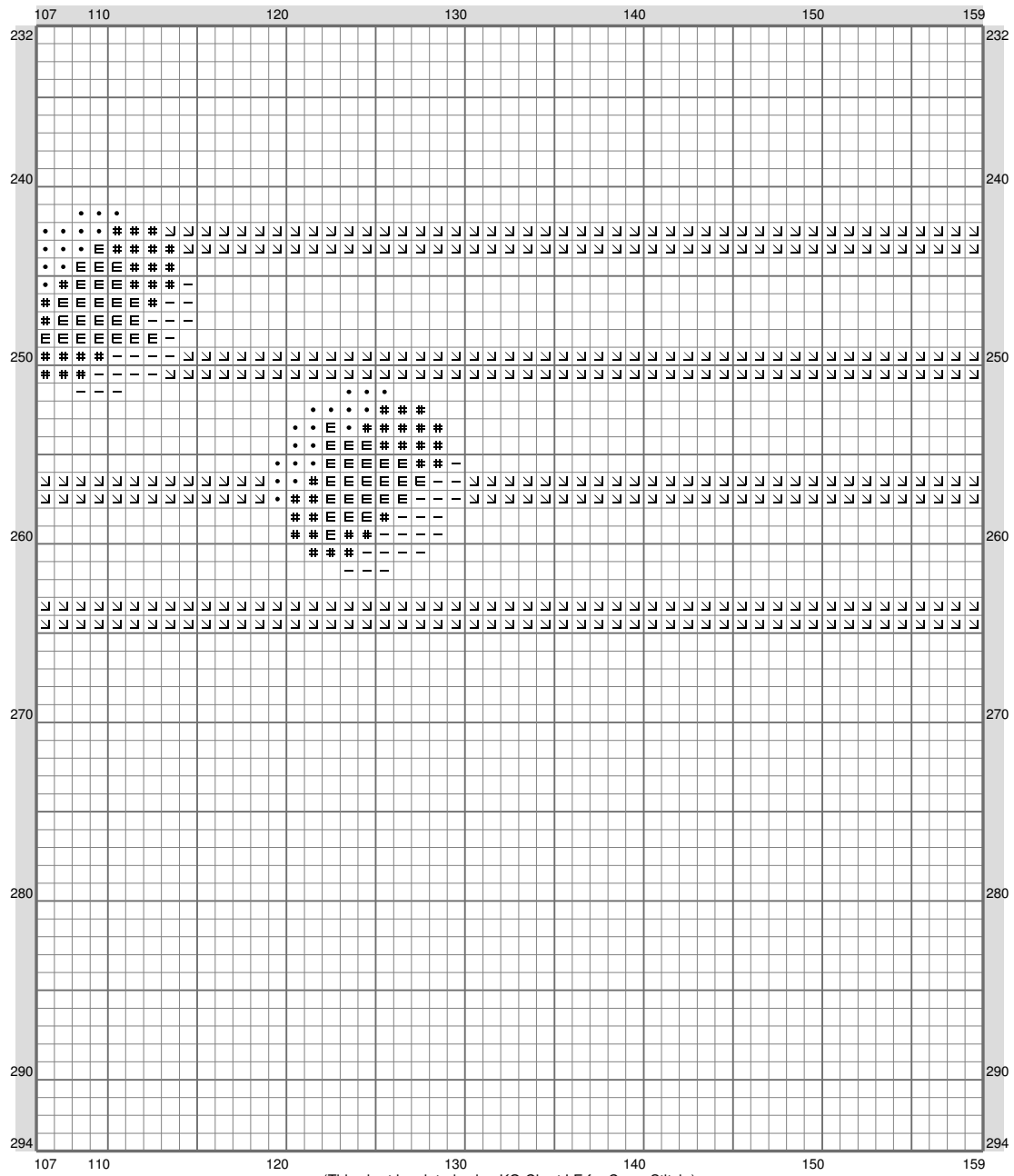
xmas12



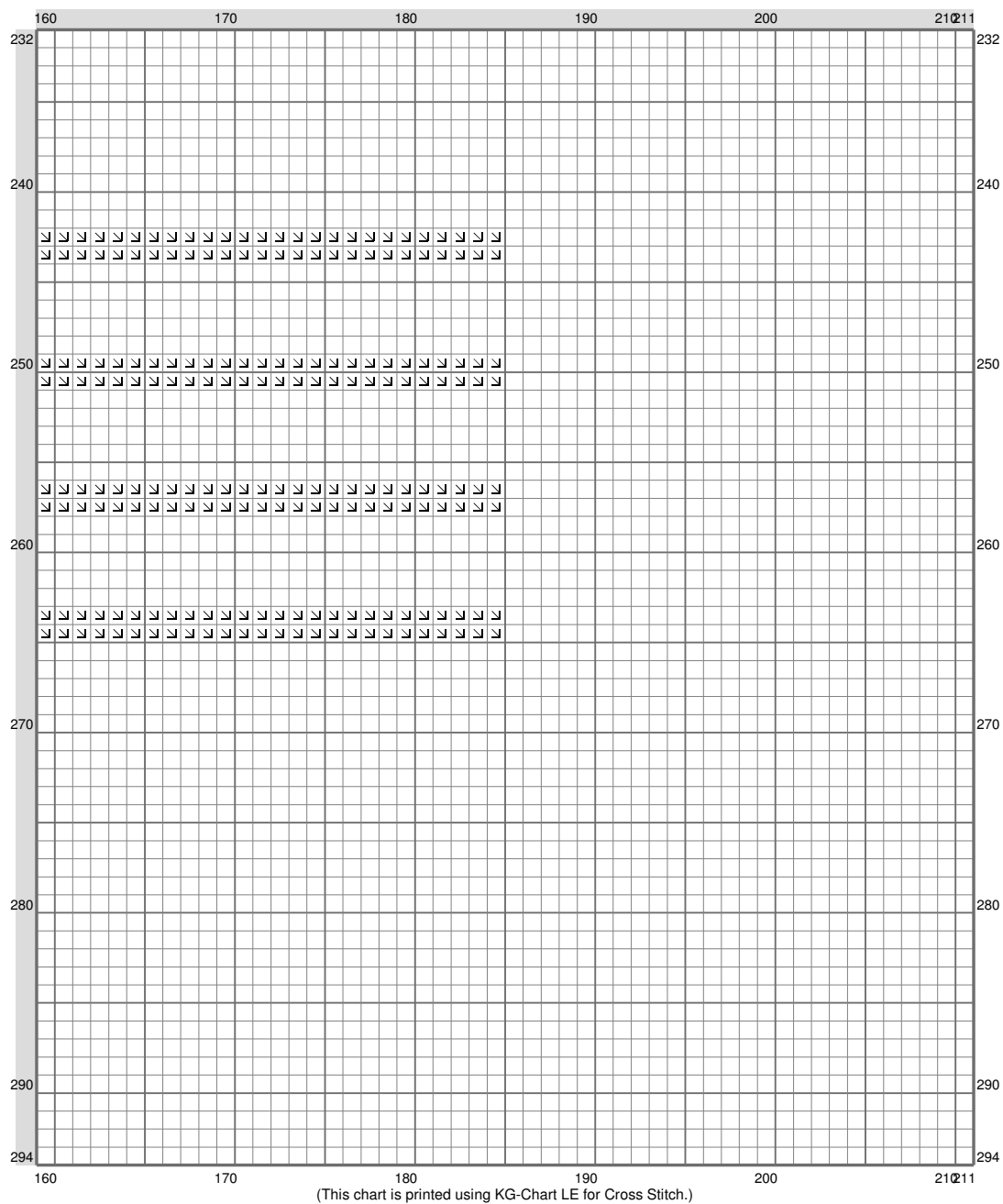
xmas12



xmas12



xmas12











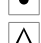



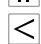



























xmas12

Stitch Count: 211w x 294h
 Finished Size: 59.54 cm x 82.97 cm (18 ct./inch)
 Cloth: Aida
 Cloth's Color: White
 # of colors: 40 Colors

Color Table (DMC)

Cross Stitch

	725	(2684 ct)		977	(408 ct)
	310	(1069 ct)		824	(143 ct)
	973	(570 ct)		701	(519 ct)
	815	(512 ct)		704	(14 ct)
	307	(162 ct)		BLANC	(22 ct)
	445	(588 ct)		740	(79 ct)
	3608	(55 ct)		783	(98 ct)
	321	(750 ct)			
	3823	(92 ct)			
	3829	(242 ct)			
	3852	(154 ct)			
	797	(128 ct)			
	3838	(85 ct)			
	156	(160 ct)			
	317	(33 ct)			
	801	(98 ct)			
	906	(540 ct)			
	995	(597 ct)			
	3846	(15 ct)			
	996	(471 ct)			
	702	(1 ct)			
	550	(484 ct)			
	208	(446 ct)			
	986	(98 ct)			
	907	(436 ct)			
	3854	(42 ct)			
	741	(52 ct)			
	304	(1197 ct)			
	318	(6 ct)			
	3747	(3 ct)			
	341	(21 ct)			
	3804	(87 ct)			
	3853	(522 ct)			