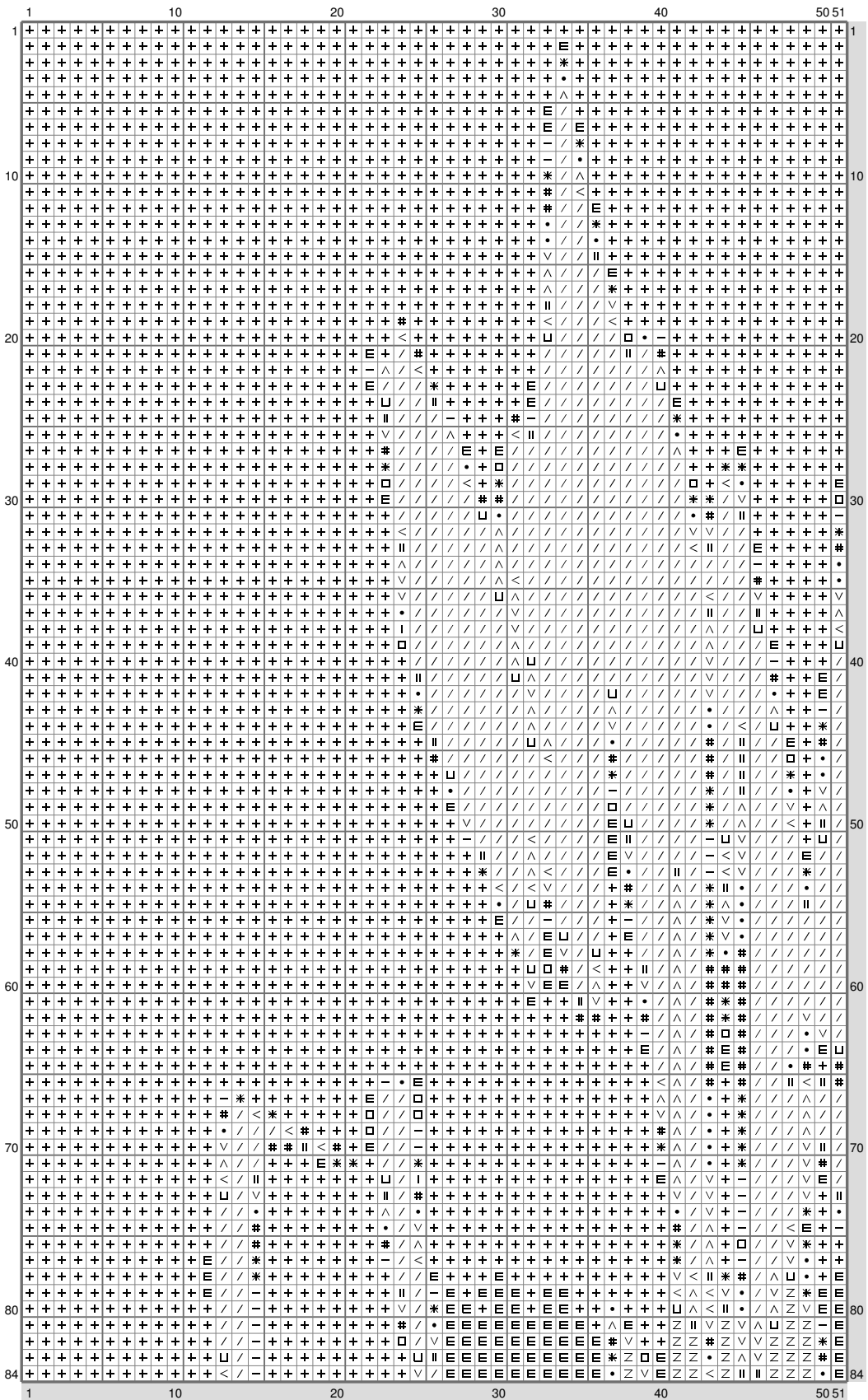
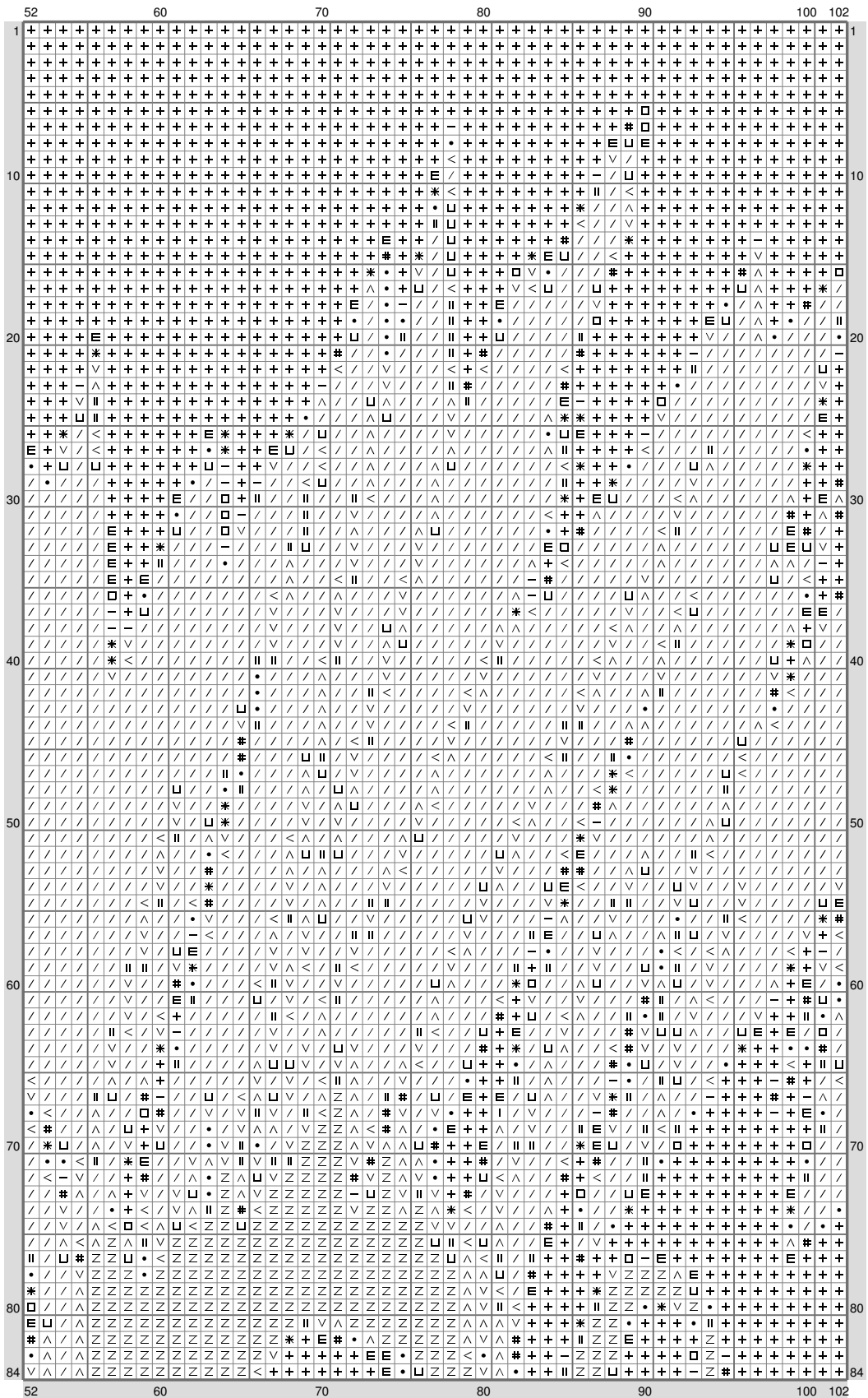


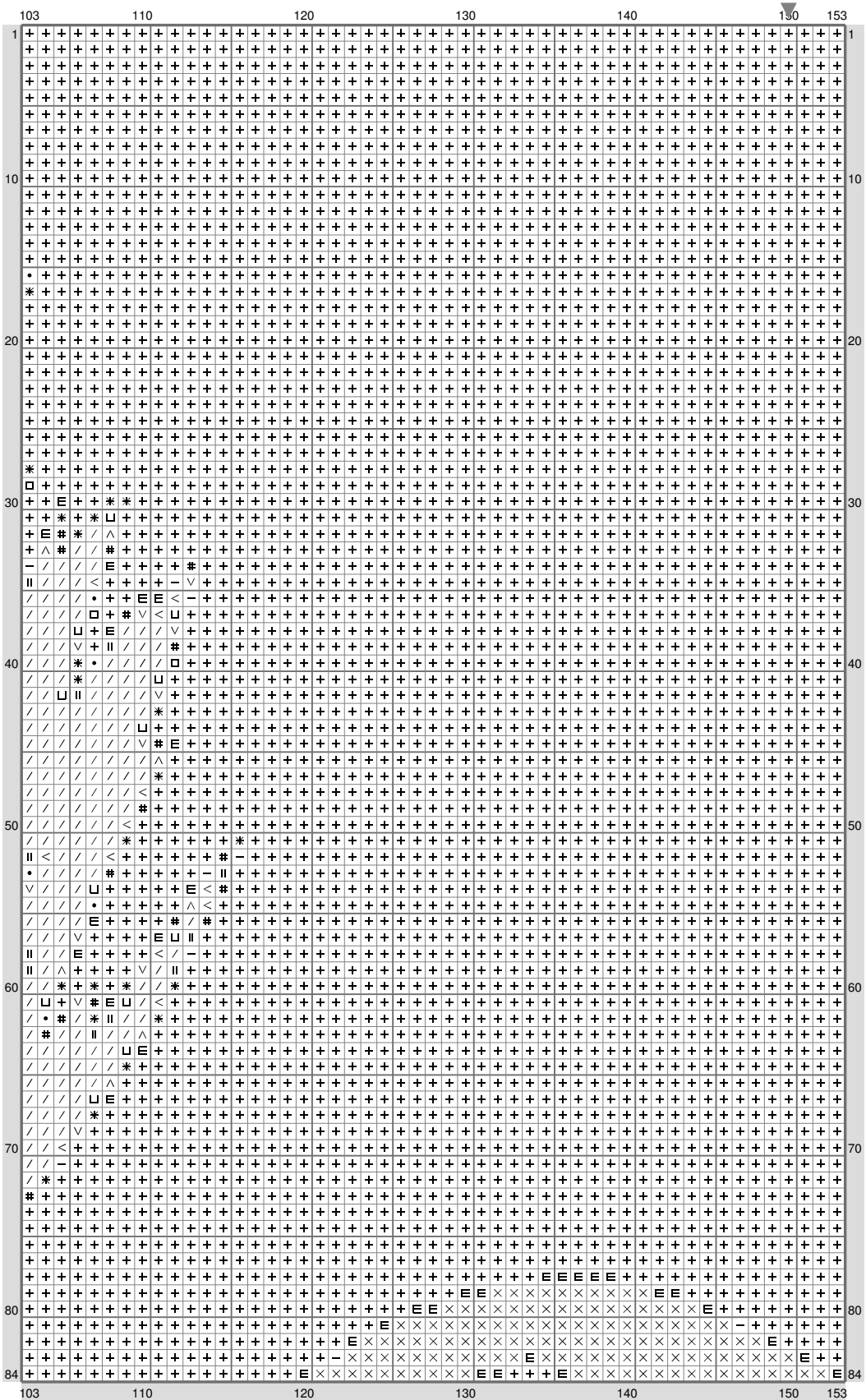
Trigun4



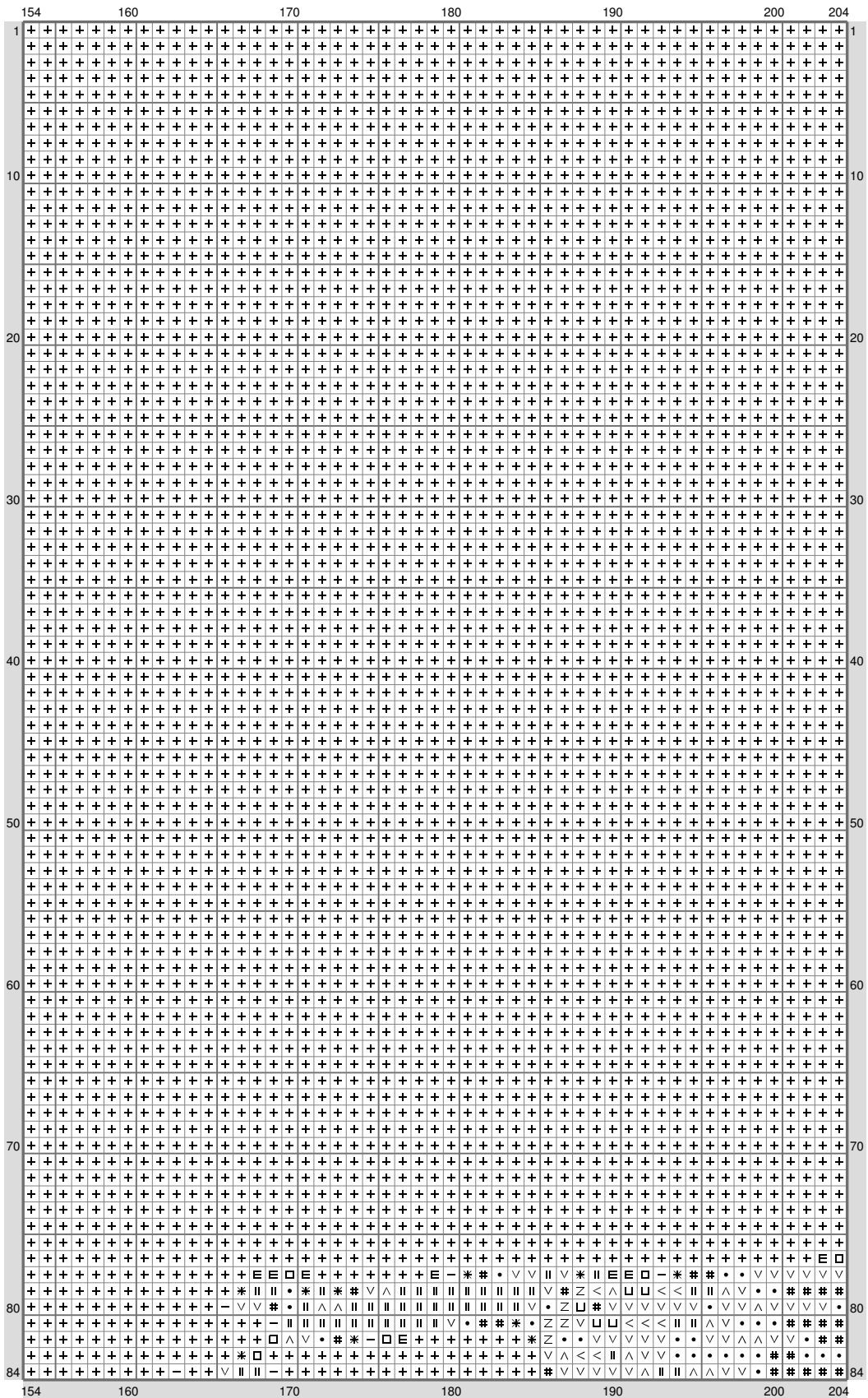
Trigun4



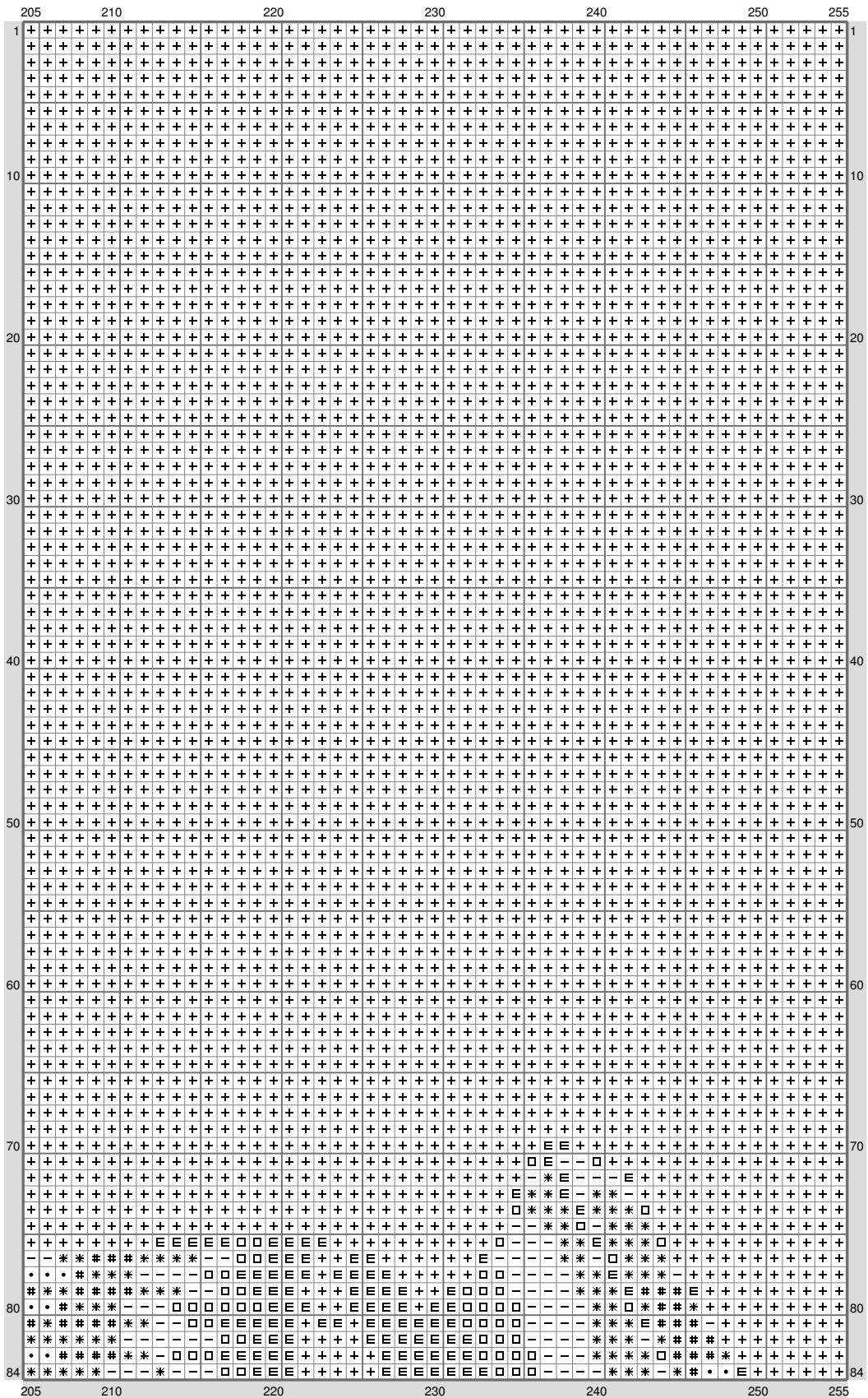
Trigun4



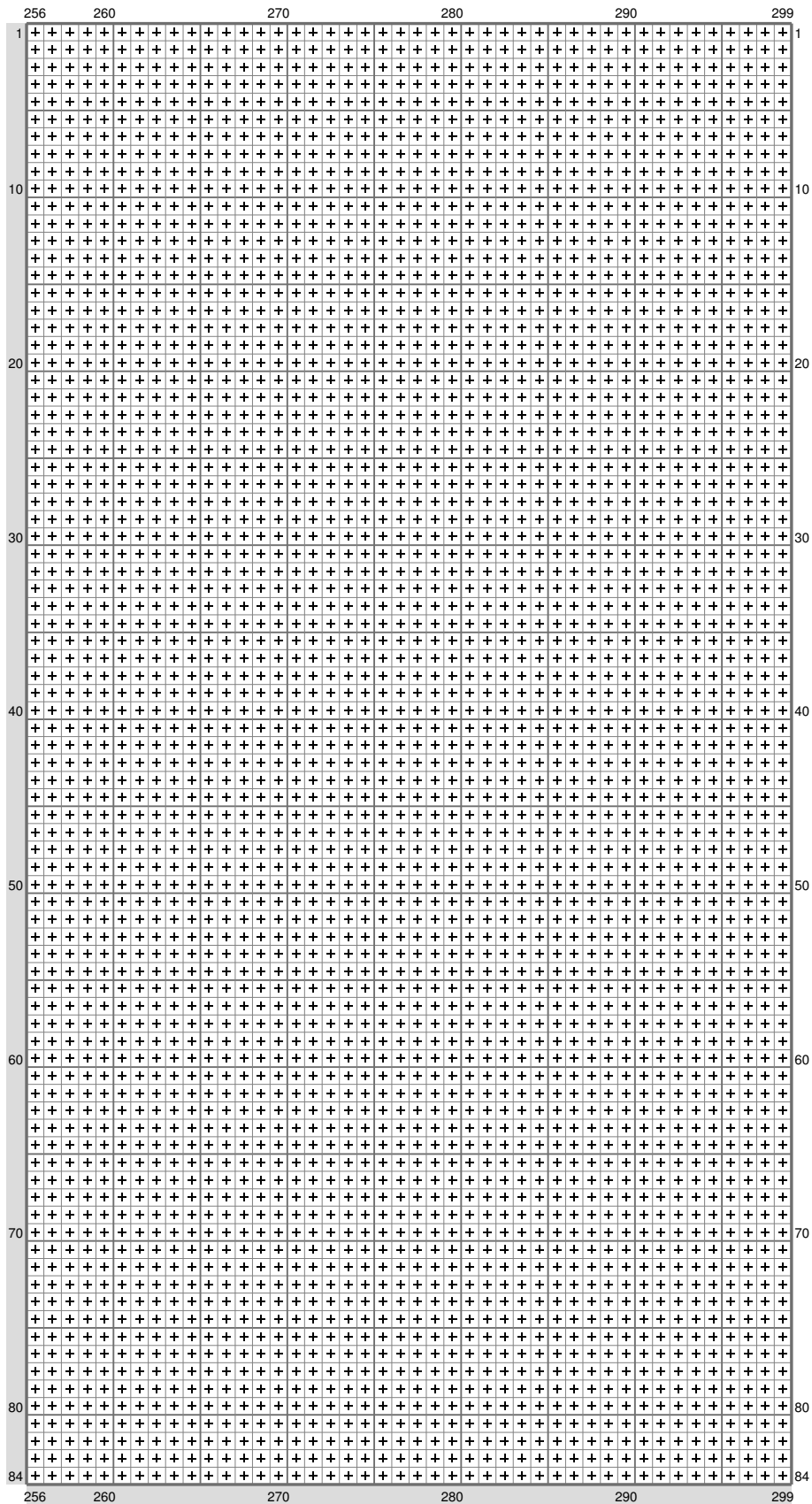
Trigun4



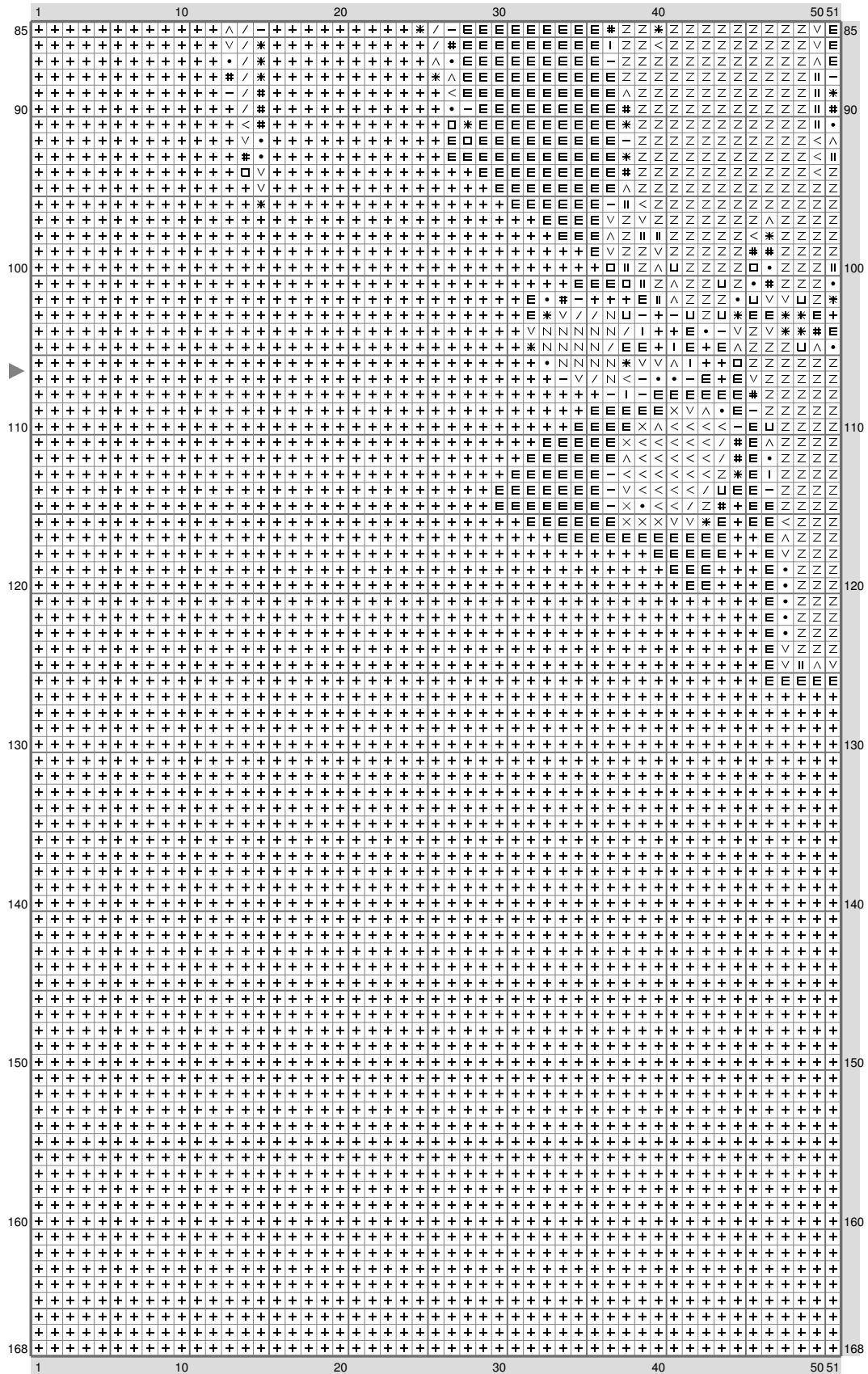
Trigun4



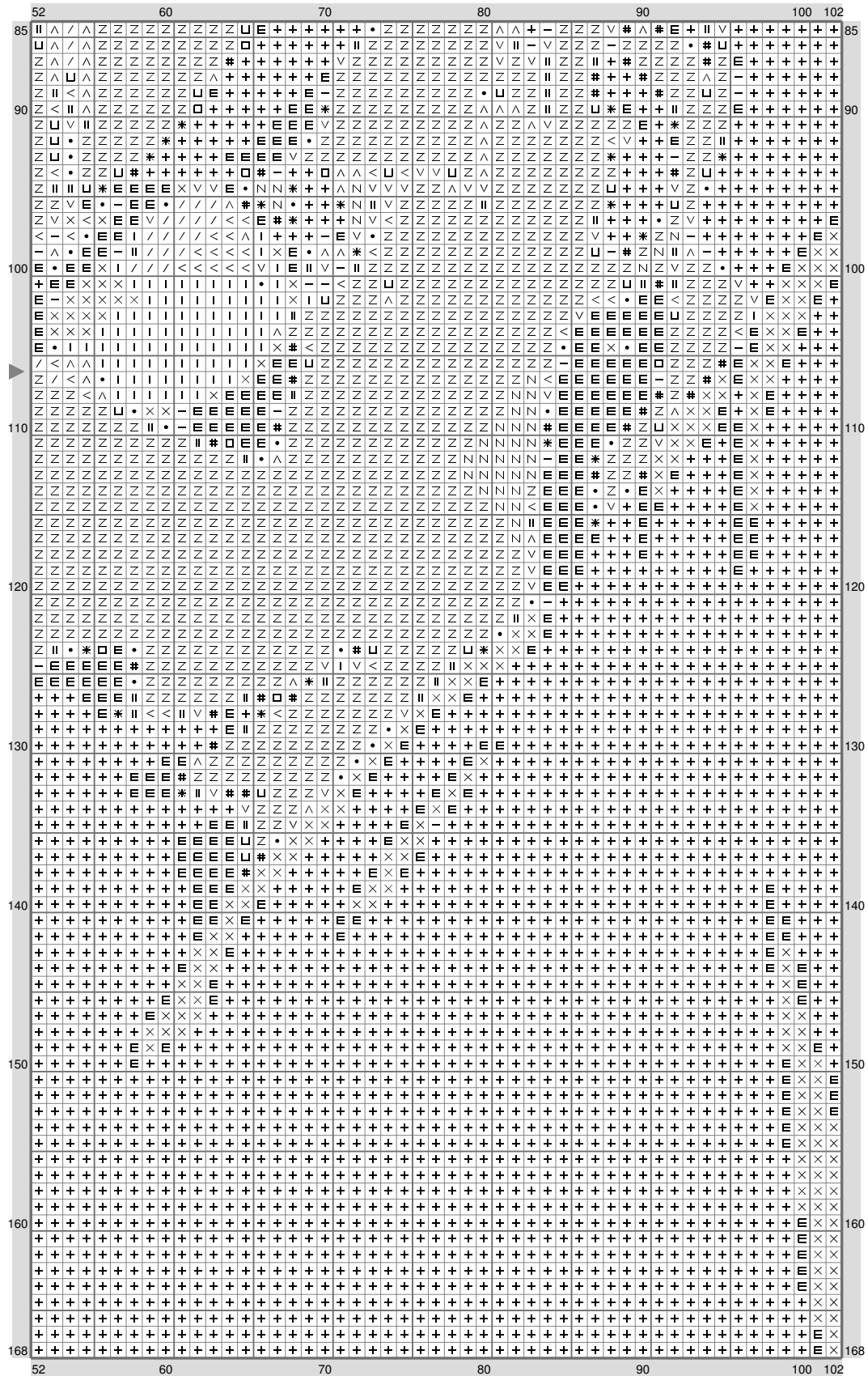
Trigun4



Trigun4

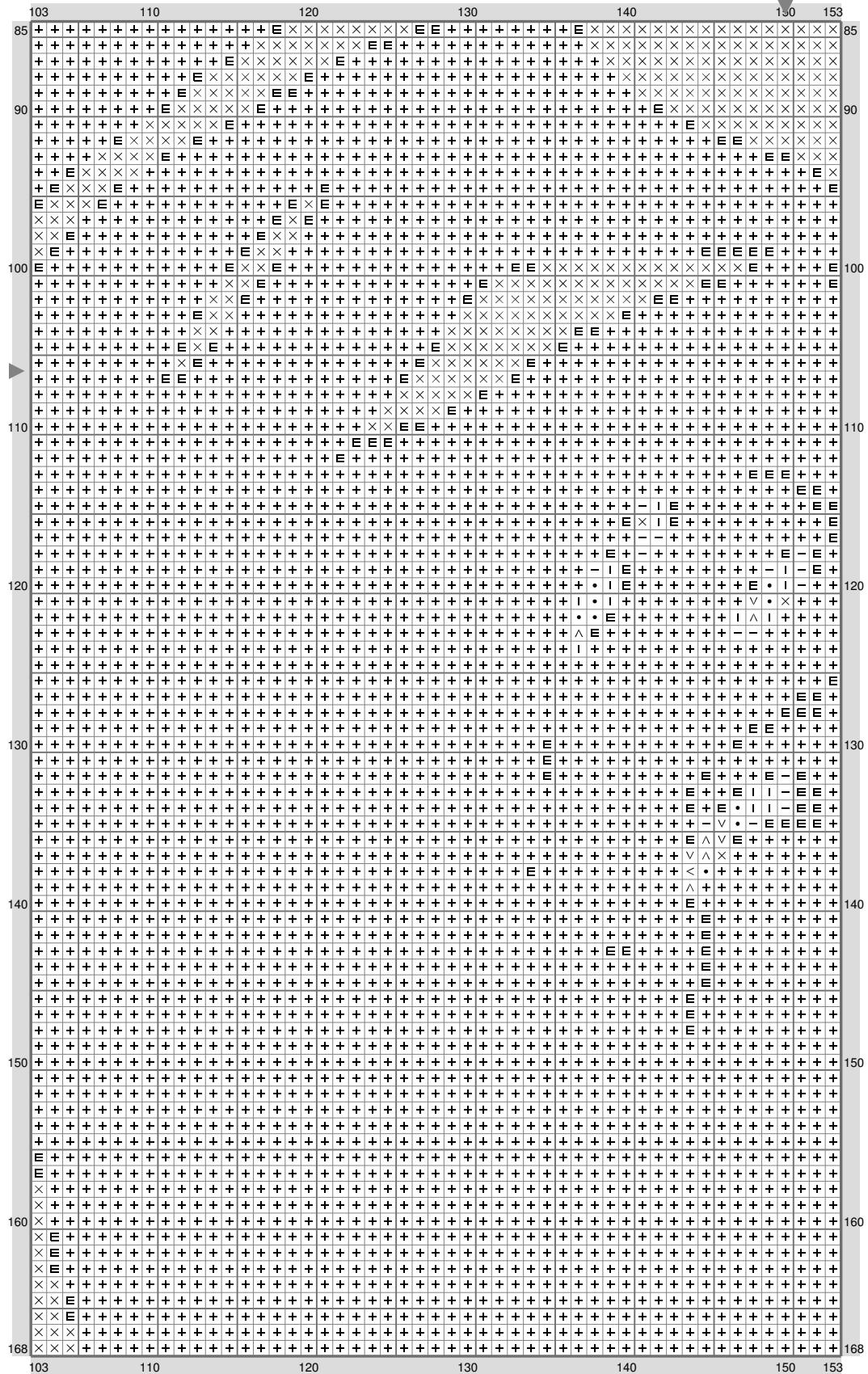


Trigun4

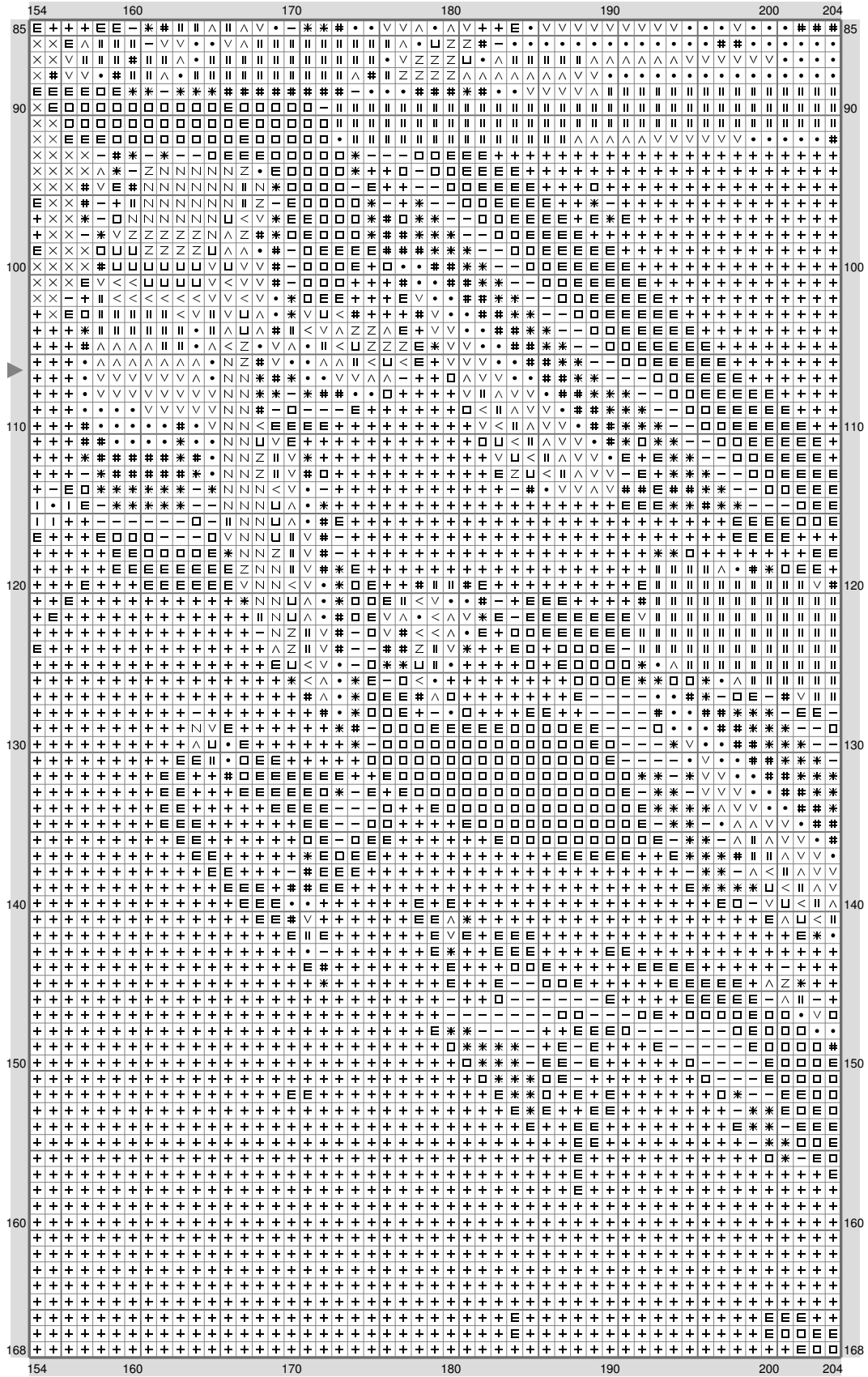


(This chart is printed using KG-Chart LE for Cross Stitch.)

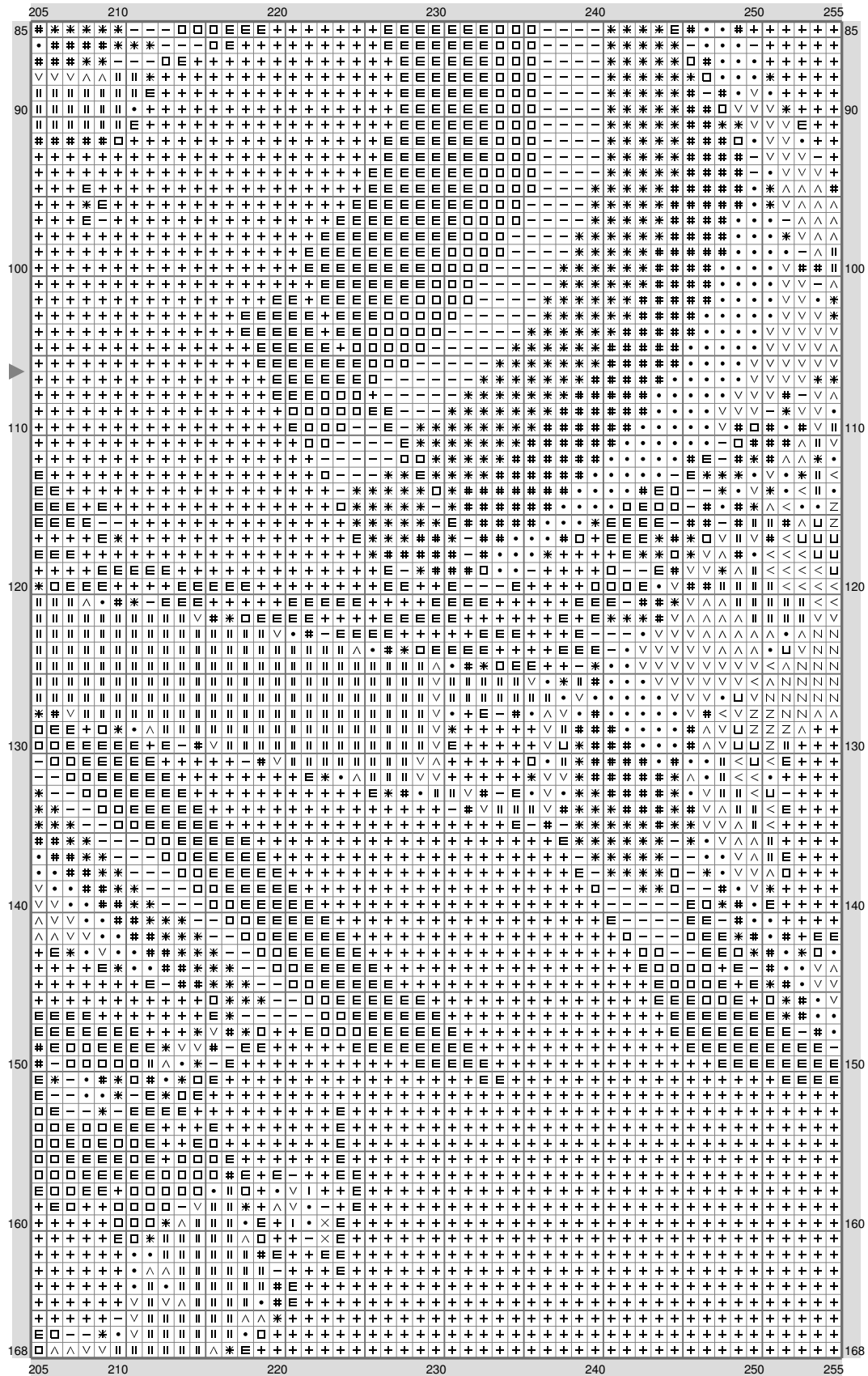
Trigun4



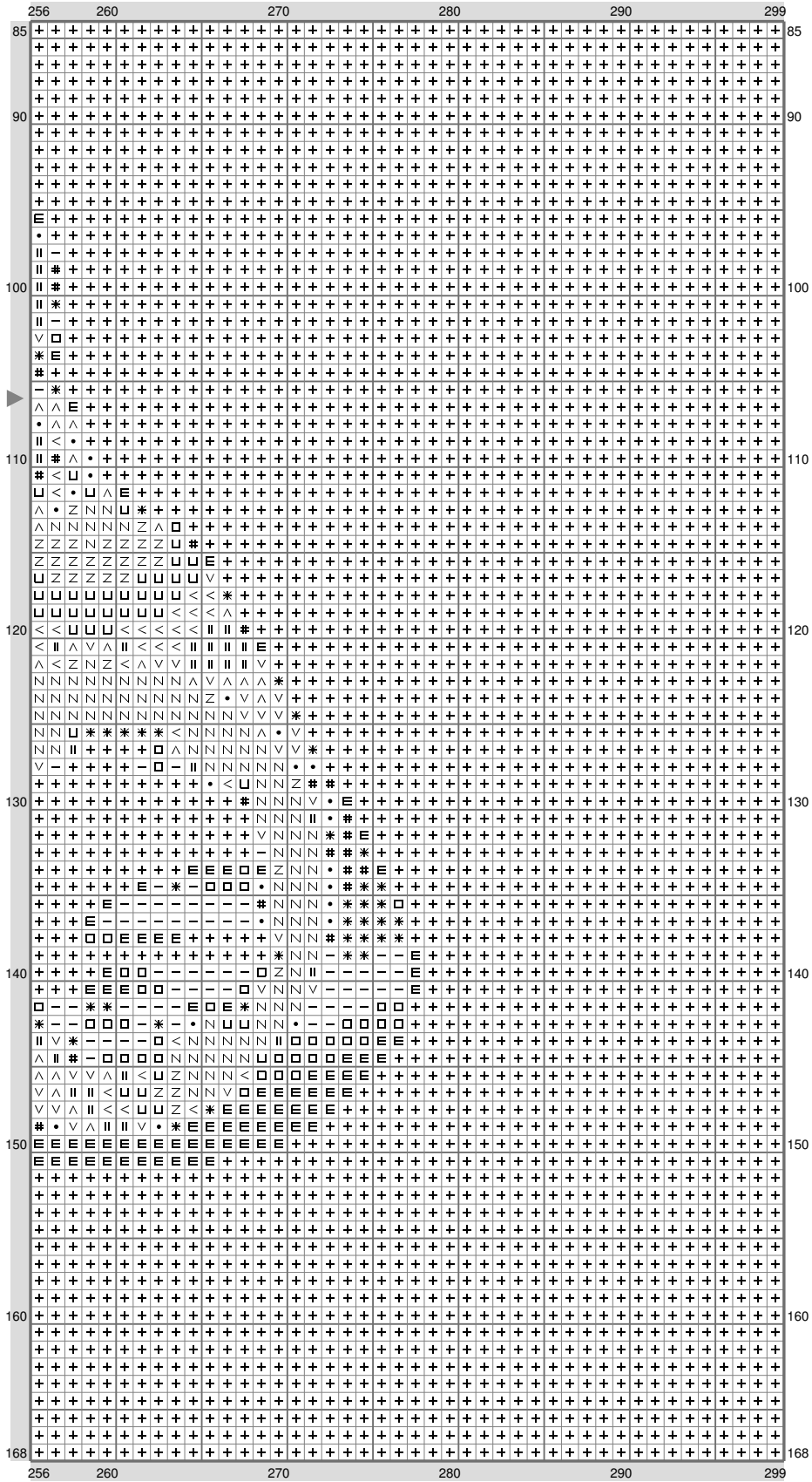
Trigun4



Trigun4



Trigun4



Trigun4

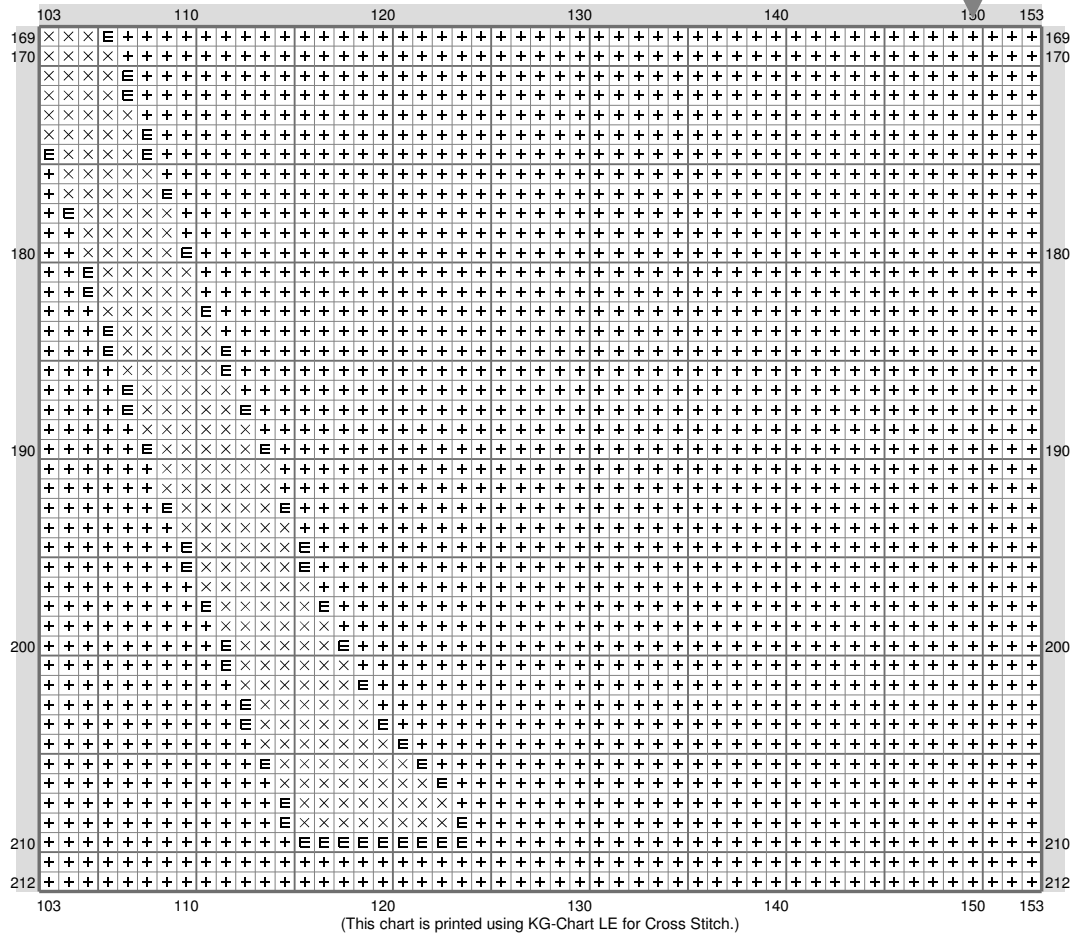
[illegible]

(This chart is printed using KG-Chart LE for Cross Stitch.)

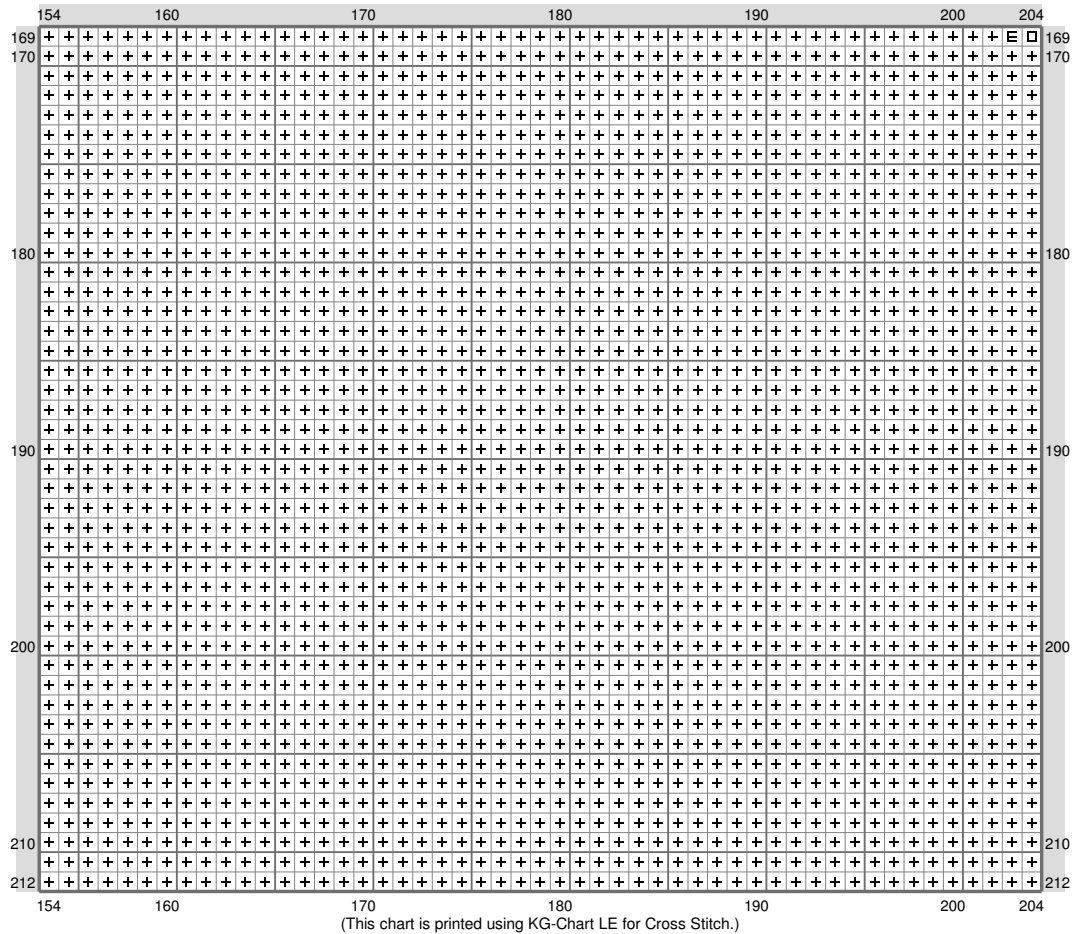
Trigun4



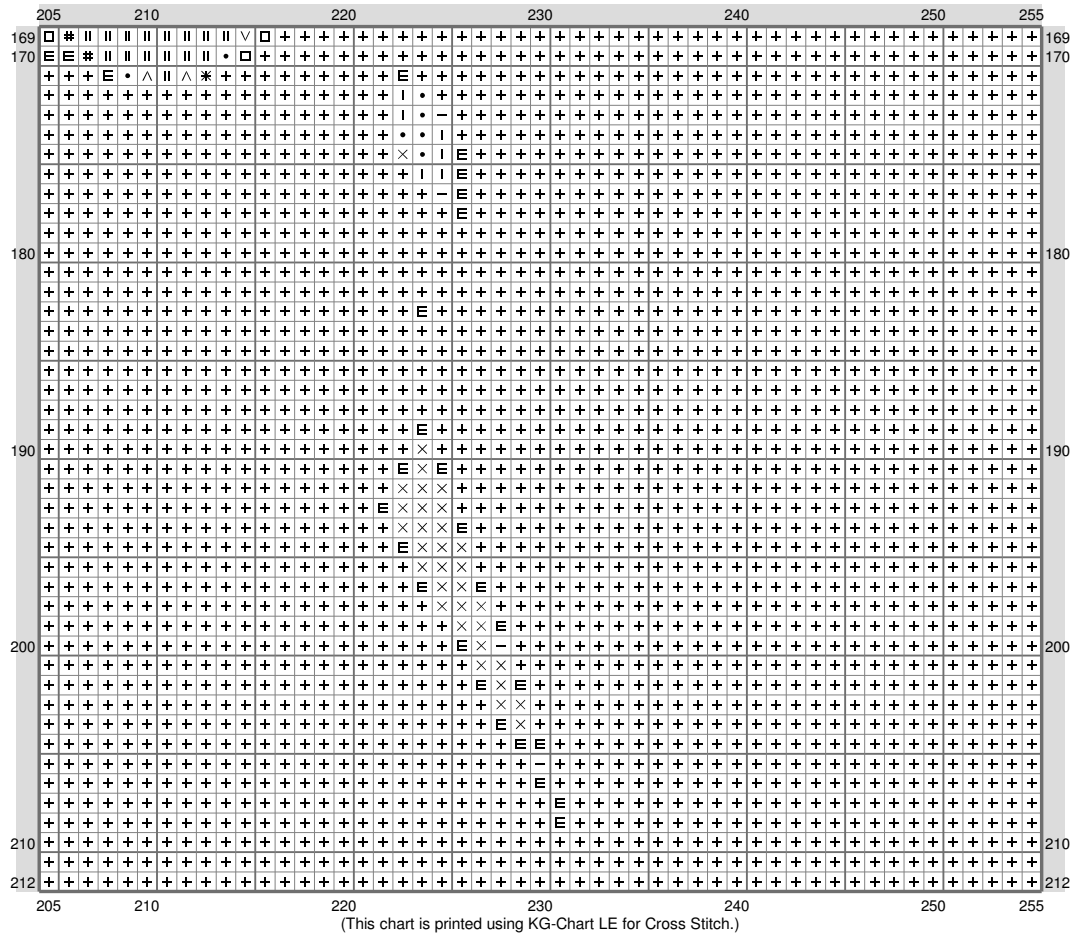
Trigun4



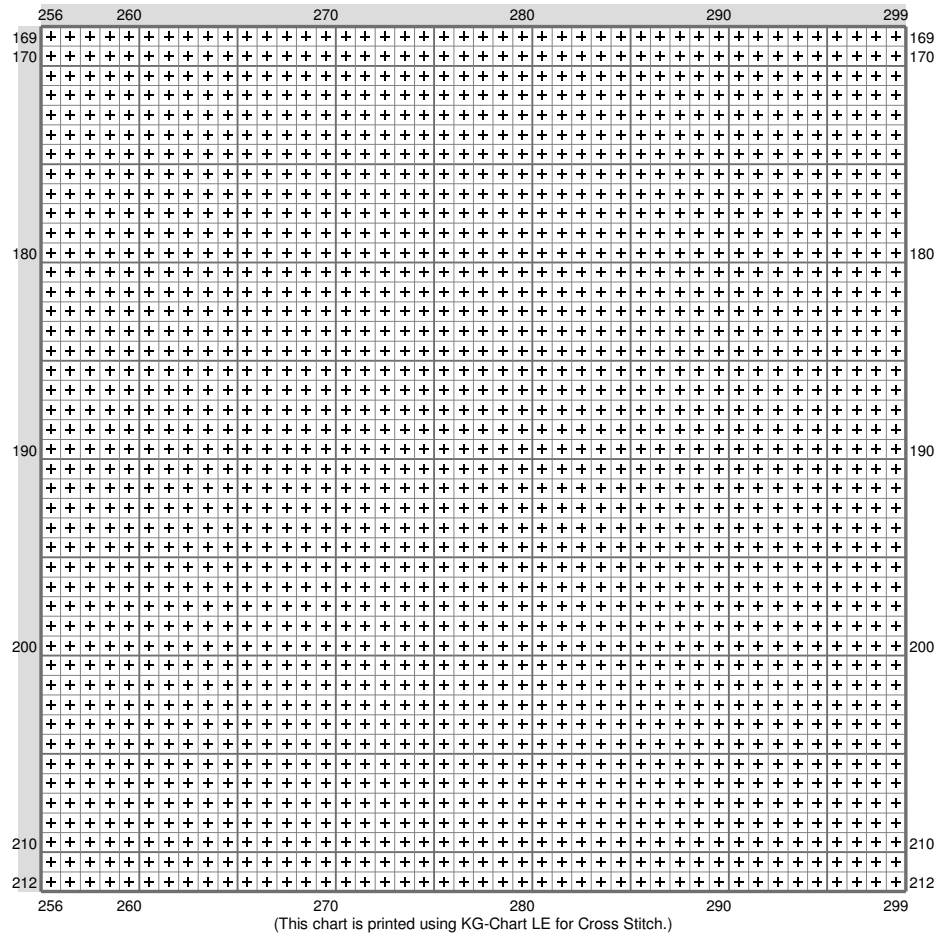
Trigun4



Trigun4



Trigun4



Trigun4

Stitch Count: 299w x 212h

Finished Size: 84.38 cm x 59.83 cm (18 ct./inch)


















Cloth: Aida

Cloth's Color: White

of colors: 17 Colors

Color Table (DMC)

Cross Stitch

	310	(49055 ct)
	939	(2120 ct)
	500	(752 ct)
	3021	(795 ct)
	838	(913 ct)
	3799	(855 ct)
	3051	(121 ct)
	3787	(709 ct)
	640	(710 ct)
	3022	(735 ct)
	523	(551 ct)
	3023	(901 ct)
	3033	(342 ct)
	3072	(293 ct)
	822	(2675 ct)
	762	(1618 ct)
	3865	(243 ct)