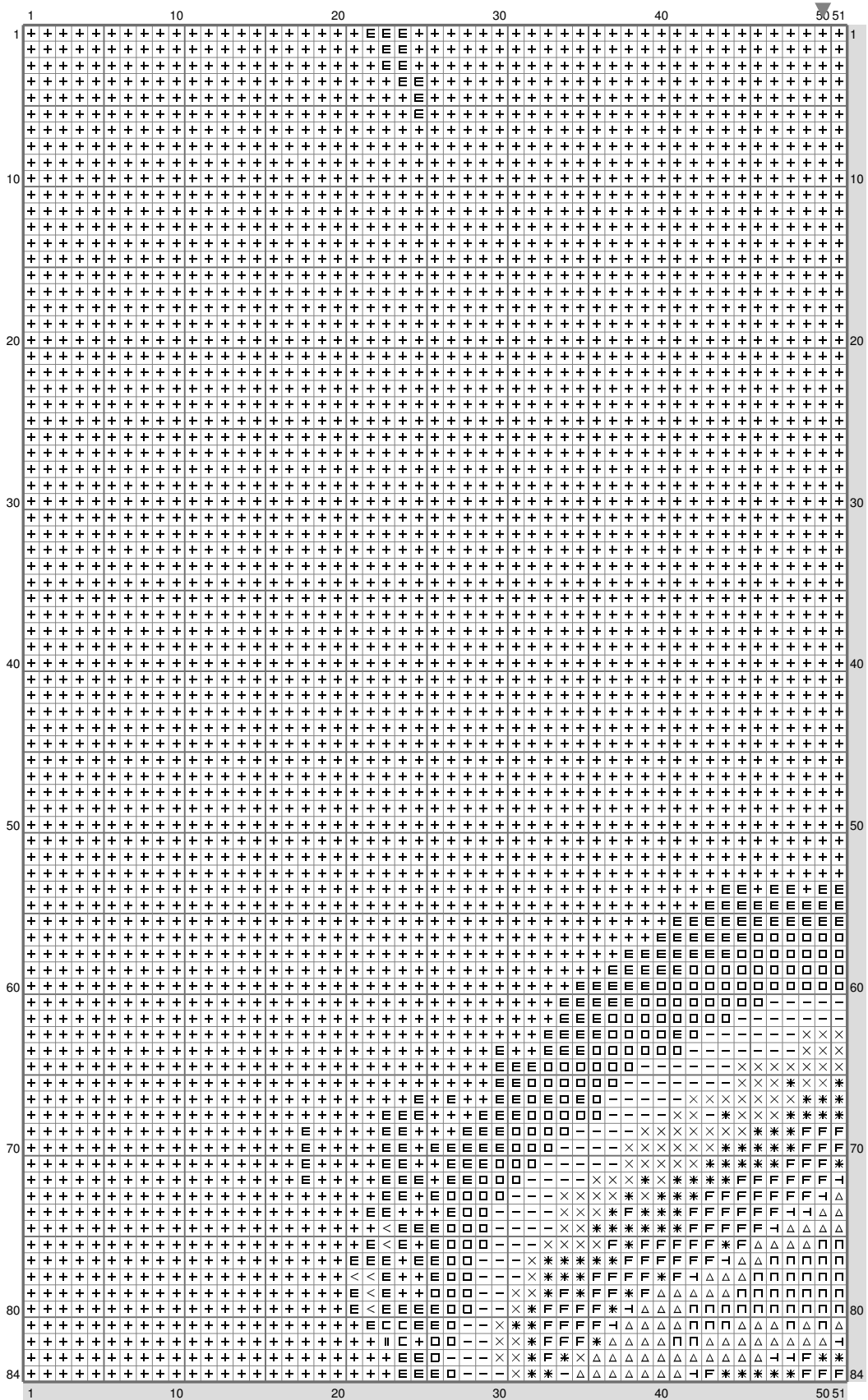
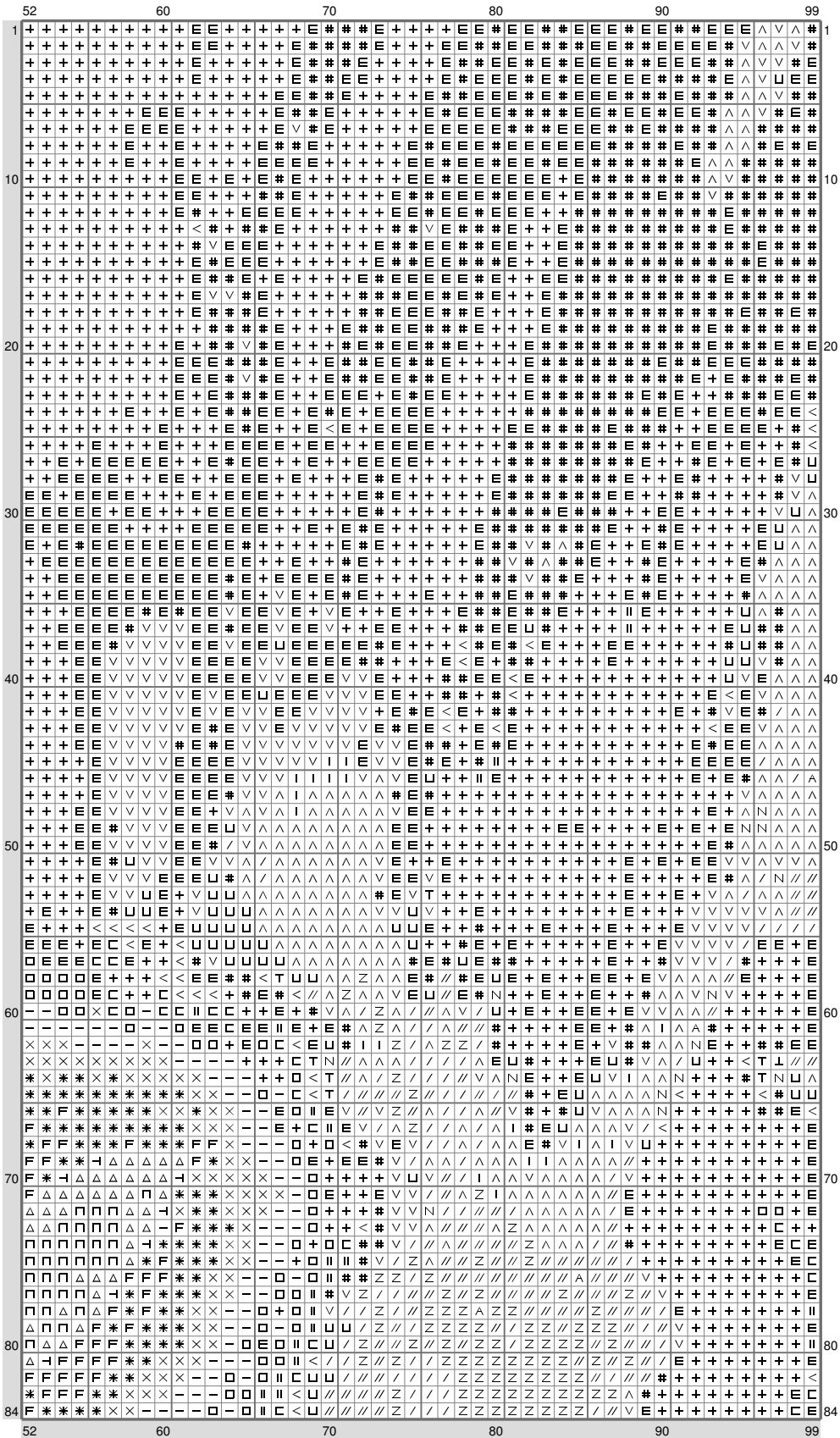


## Trigun6

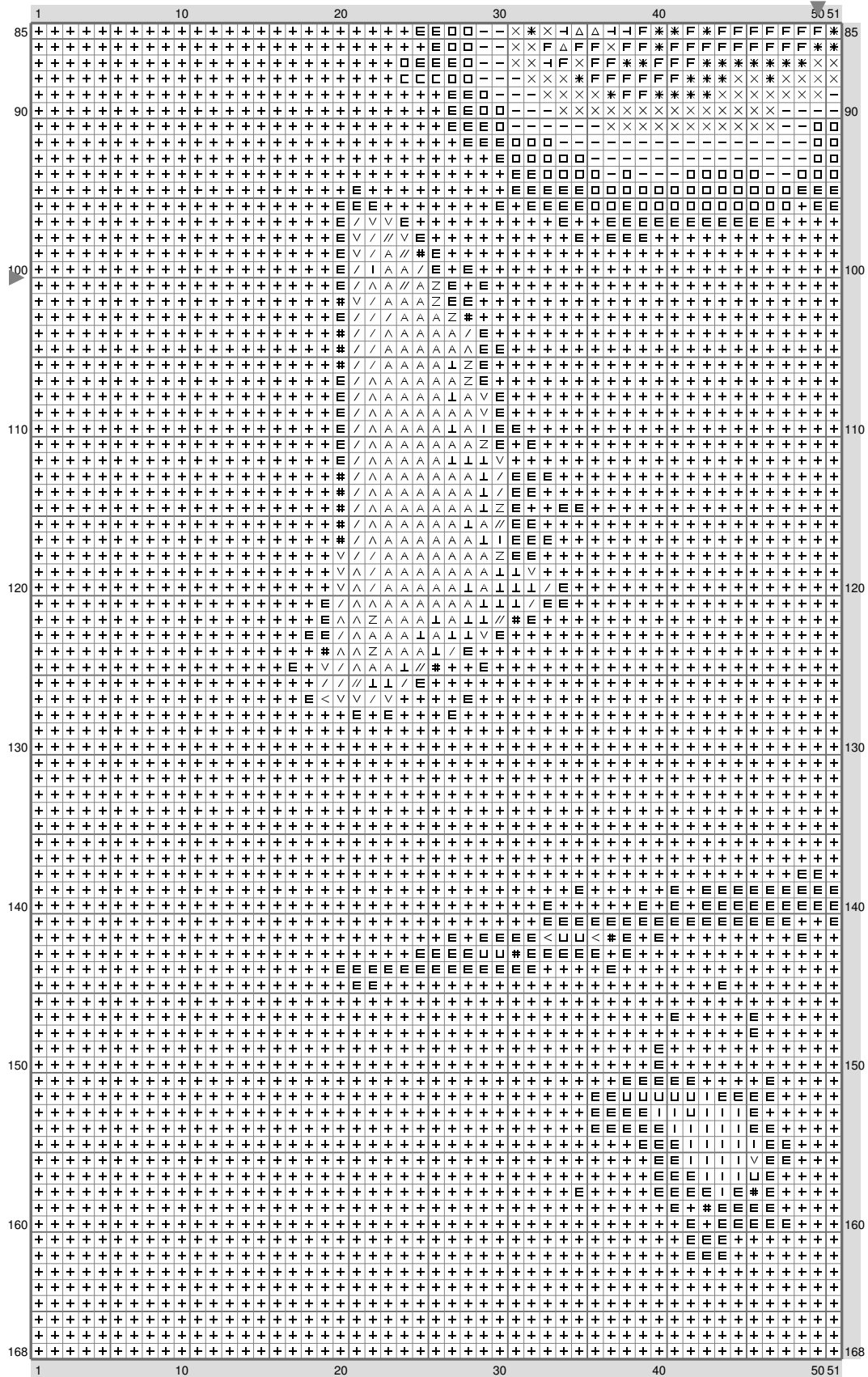


## Trigun6



(This chart is printed using KG-Chart LE for Cross Stitch.)

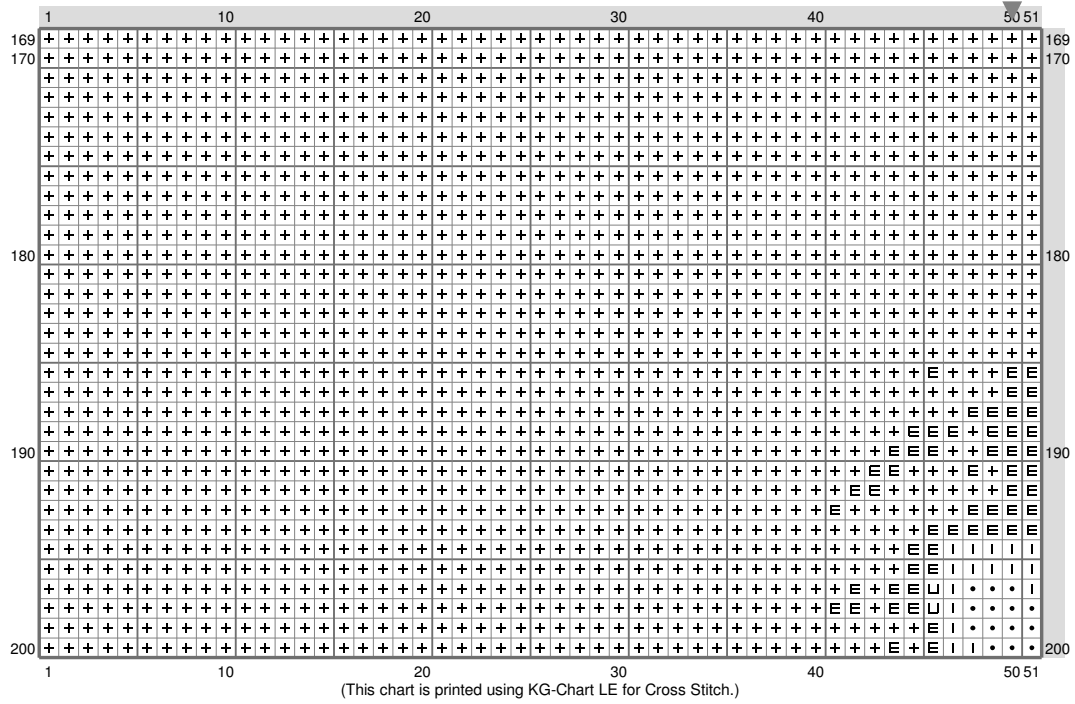
## Trigun6



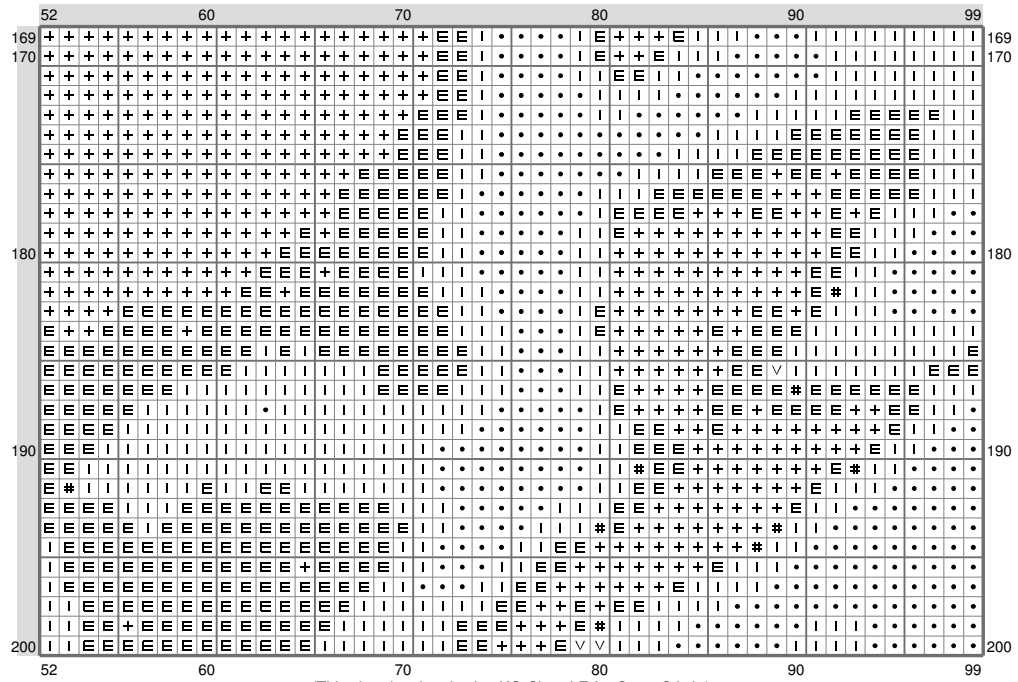
## Trigun6

[illegible]

# Trigun6



# Trigun6



## Trigun6

Stitch Count: 99w x 200h

Finished Size: 13.97 cm x 28.22 cm (18 ct./inch)

Cloth: Aida

Cloth's Color: White

# of colors: 26 Colors

### Color Table (DMC)

---

#### Cross Stitch

+	310	(11712 ct)
E	939	(1921 ct)
□	500	(265 ct)
—	3750	(269 ct)
×	3842	(216 ct)
✱	3765	(196 ct)
I	815	(815 ct)
#	3371	(682 ct)
•	498	(778 ct)
V	938	(325 ct)
^	829	(327 ct)
	823	(35 ct)
<	3031	(66 ct)
U	898	(127 ct)
/	869	(342 ct)
Z	780	(482 ct)
N	830	(100 ct)
//	434	(415 ct)
A	3829	(266 ct)
C	3799	(40 ct)
F	3760	(148 ct)
T	3790	(26 ct)
⊥	3862	(47 ct)
⊢	518	(24 ct)
Π	828	(70 ct)
△	162	(106 ct)