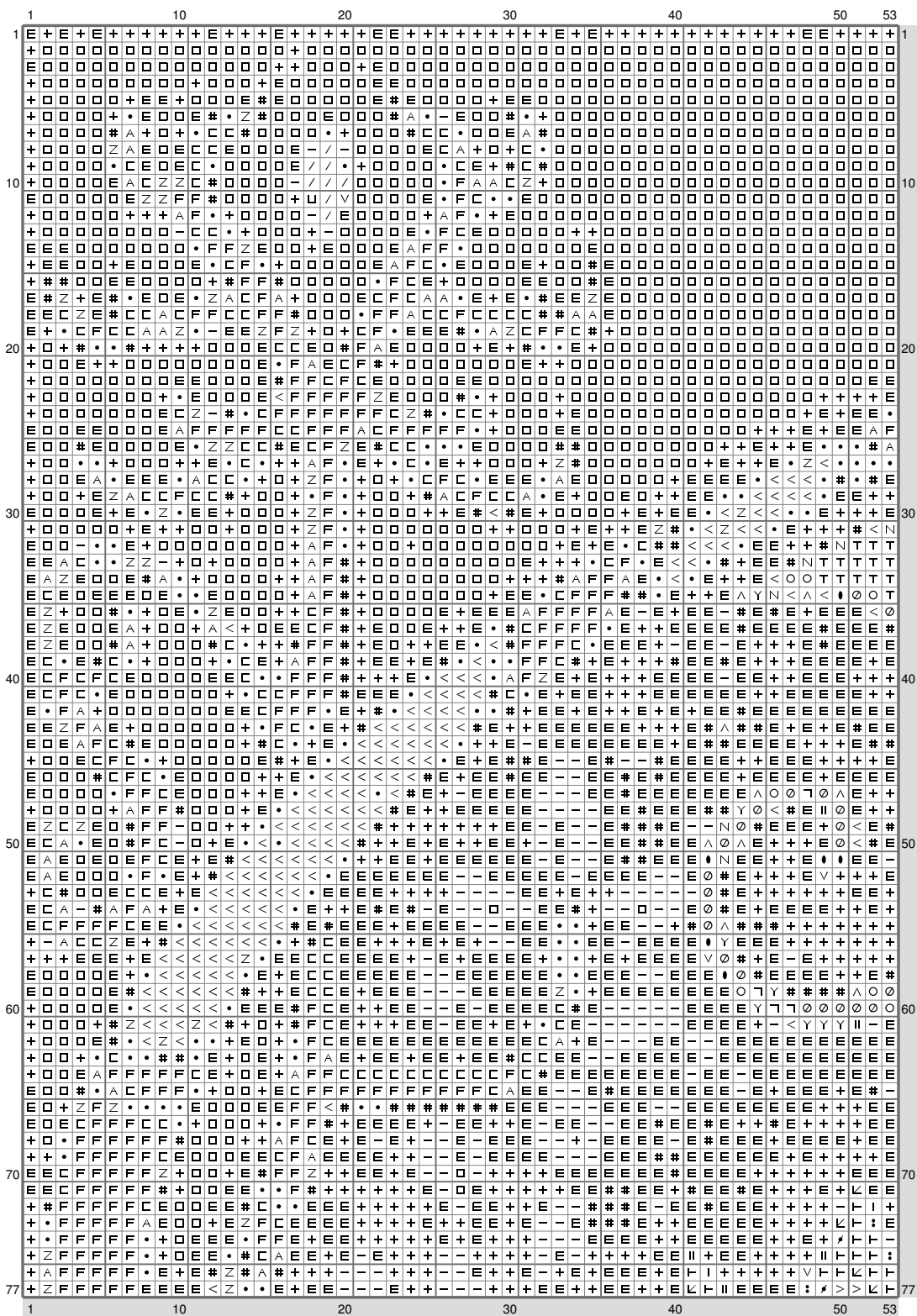
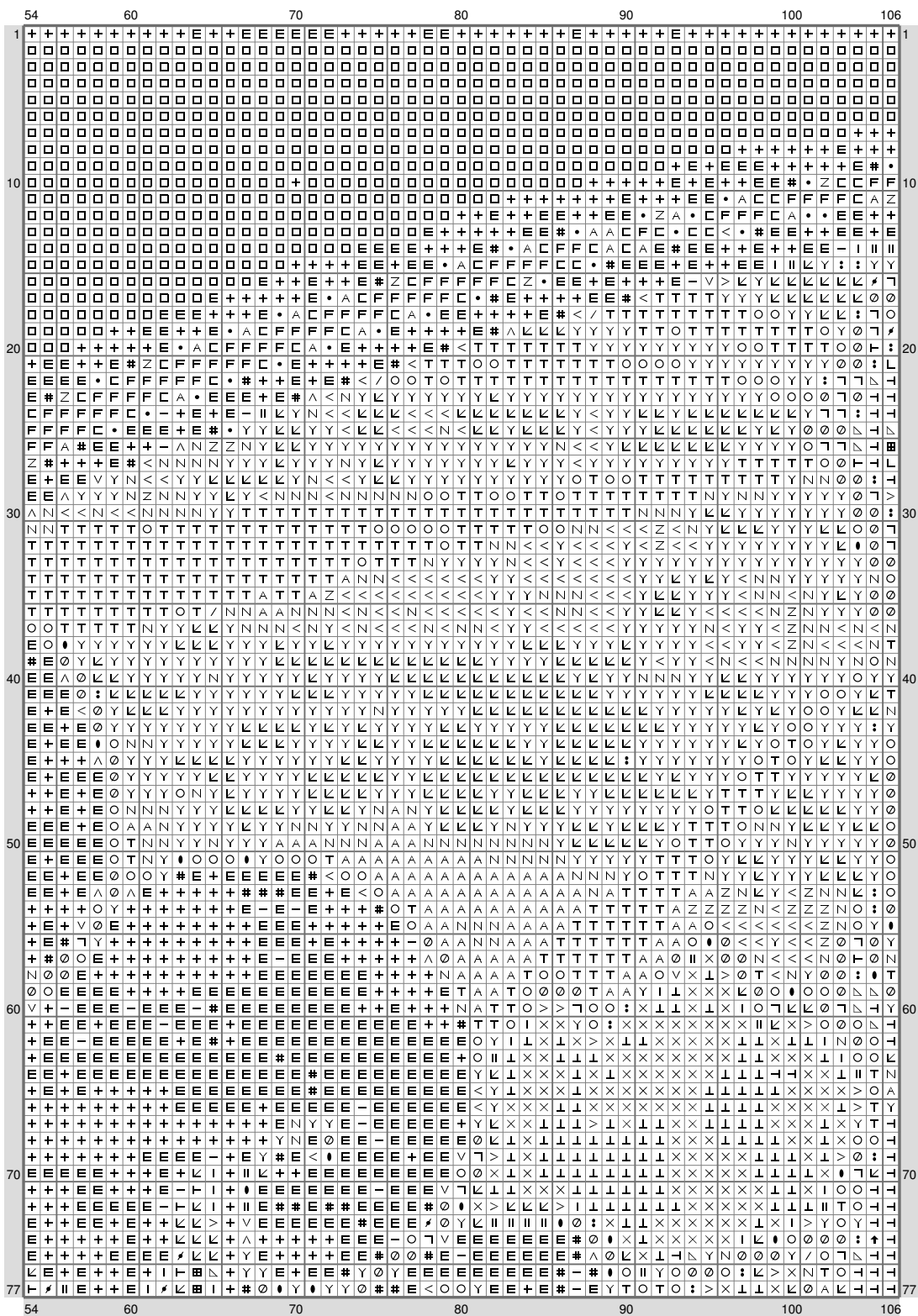


Untitled



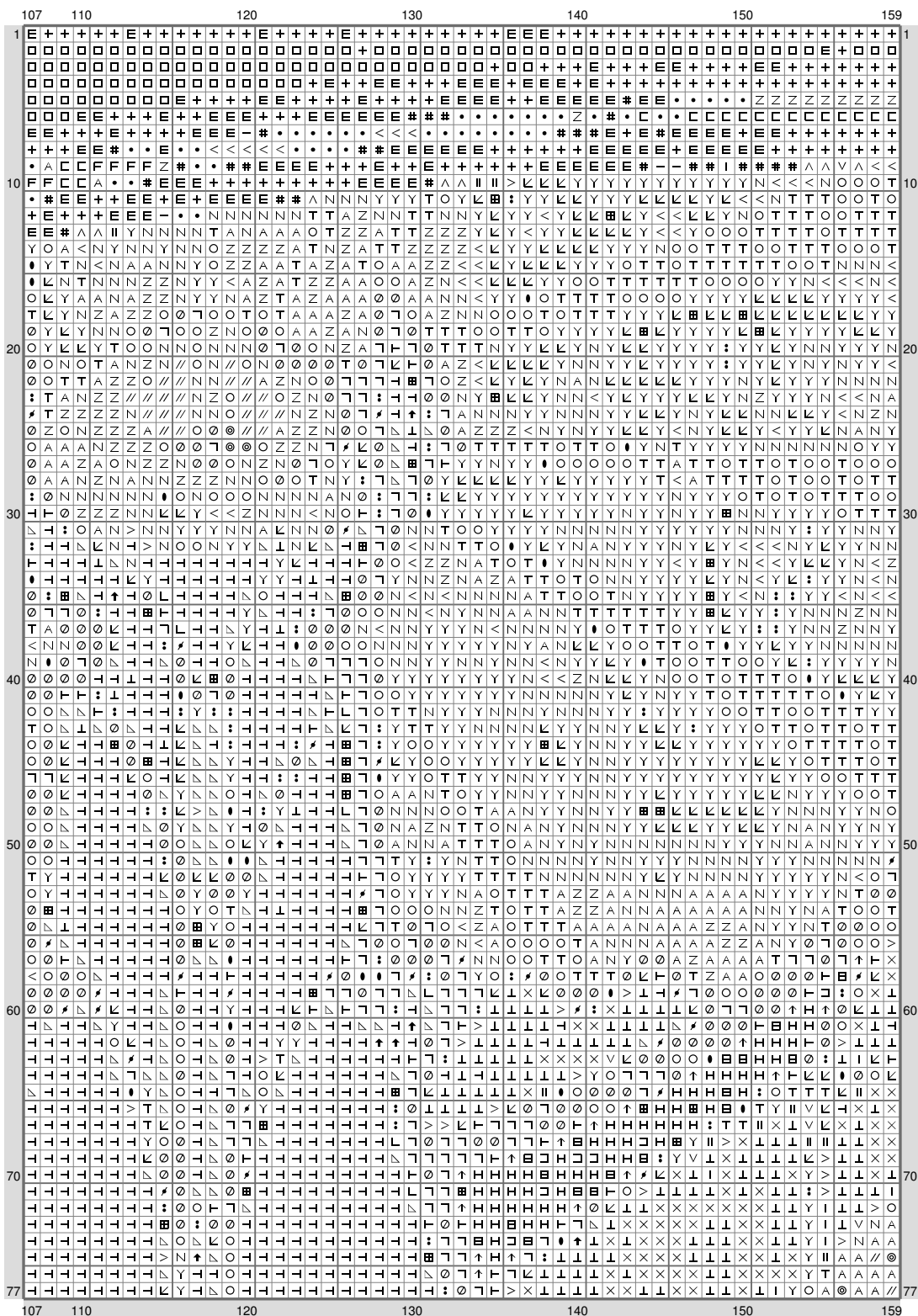
(This chart is printed using KG-Chart LE for Cross Stitch.)

Untitled



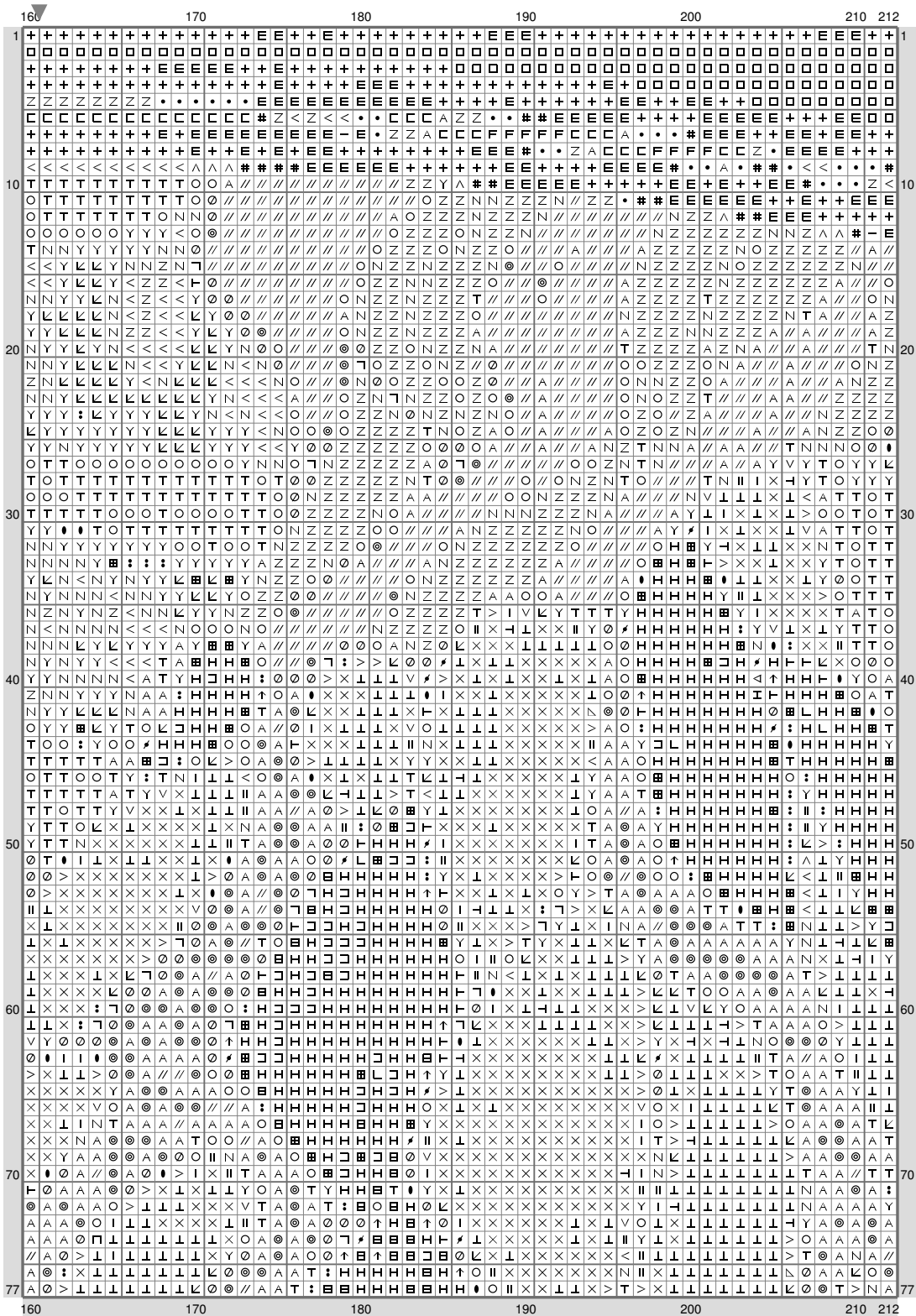
(This chart is printed using KG-Chart LE for Cross Stitch.)

Untitled



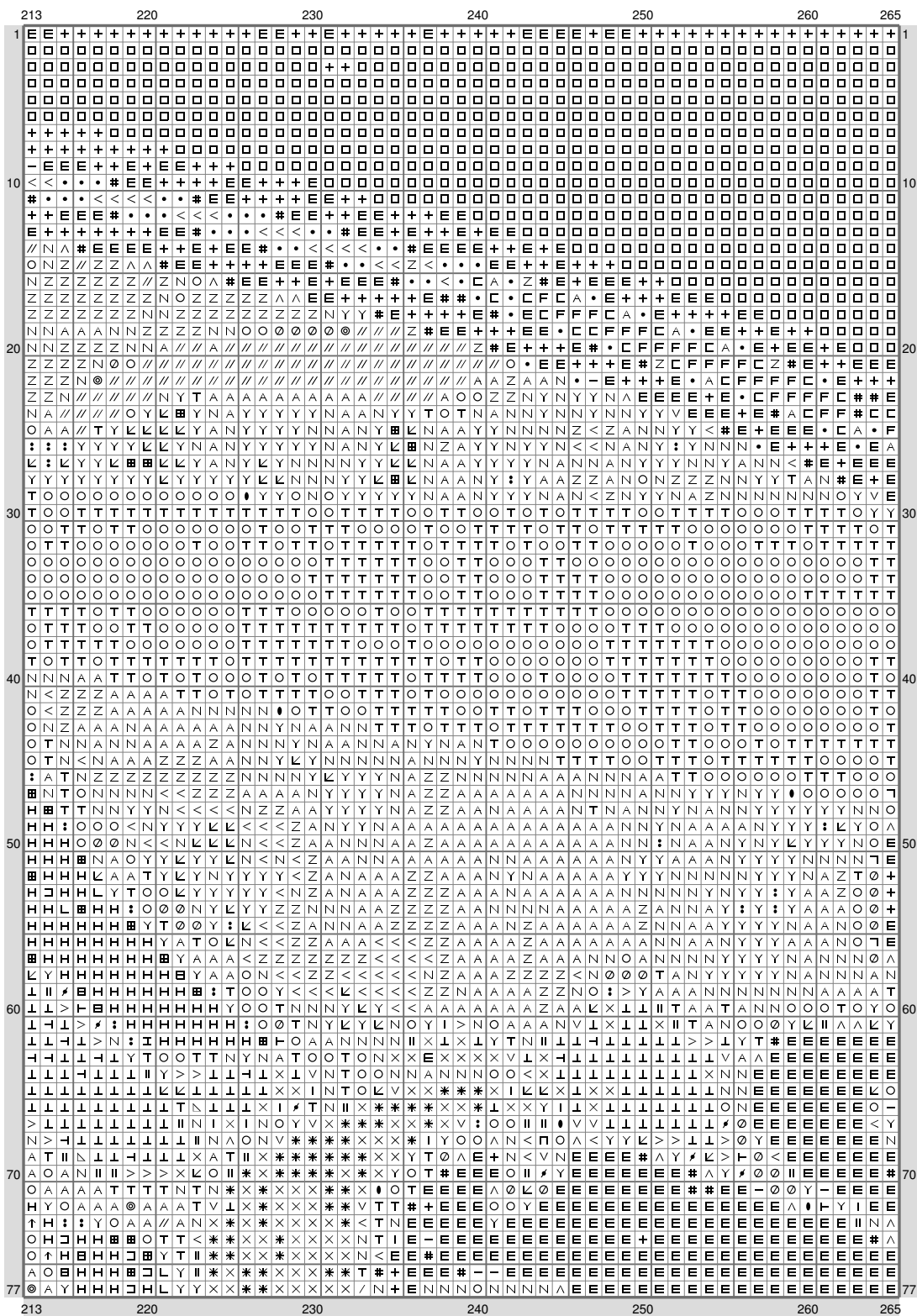
(This chart is printed using KG-Chart LE for Cross Stitch.)

Untitled



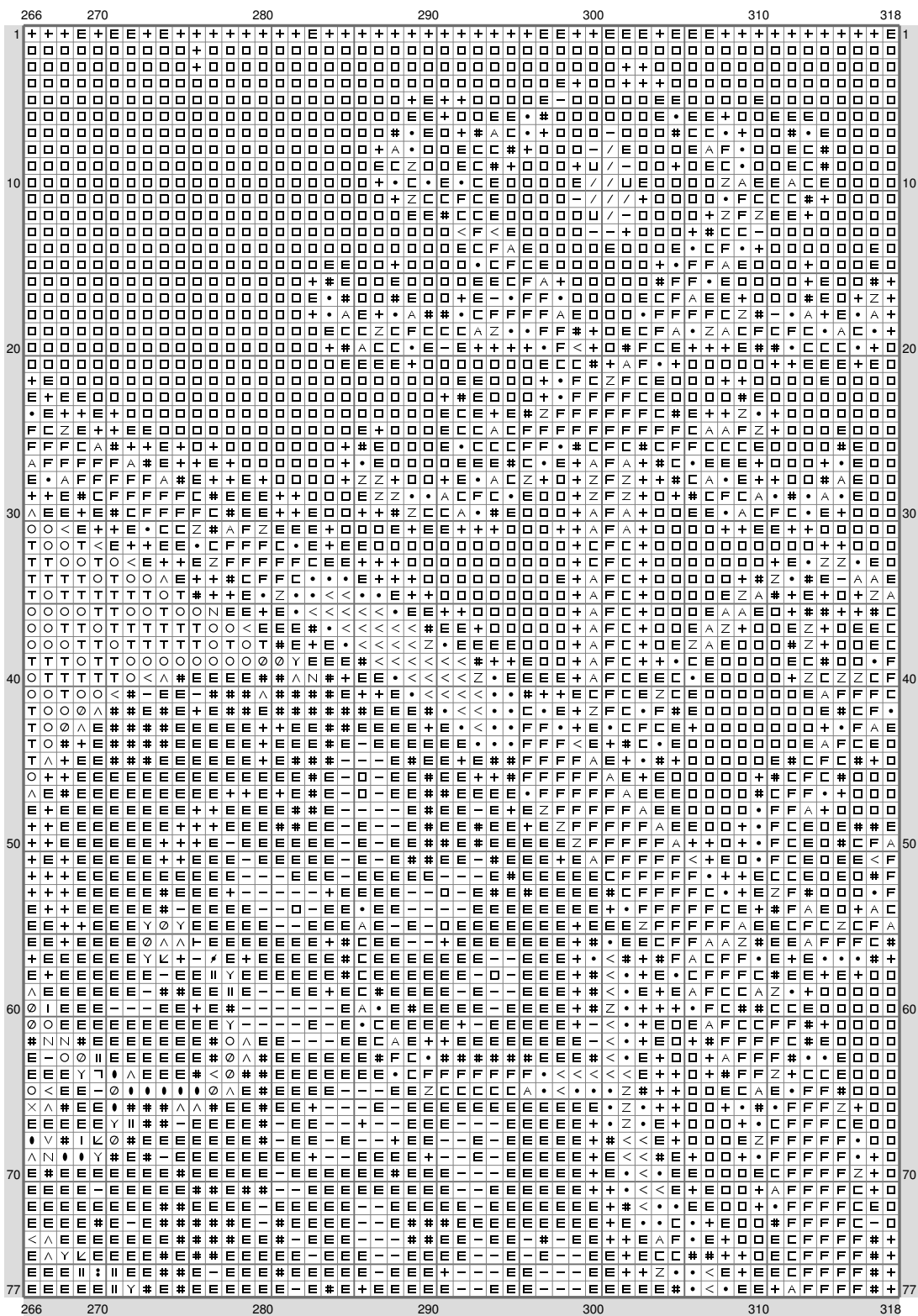
(This chart is printed using KG-Chart LE for Cross Stitch.)

Untitled

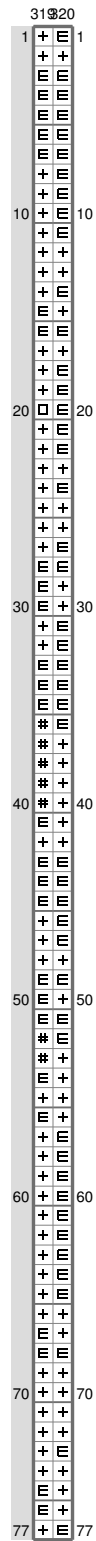


(This chart is printed using KG-Chart LE for Cross Stitch.)

Untitled

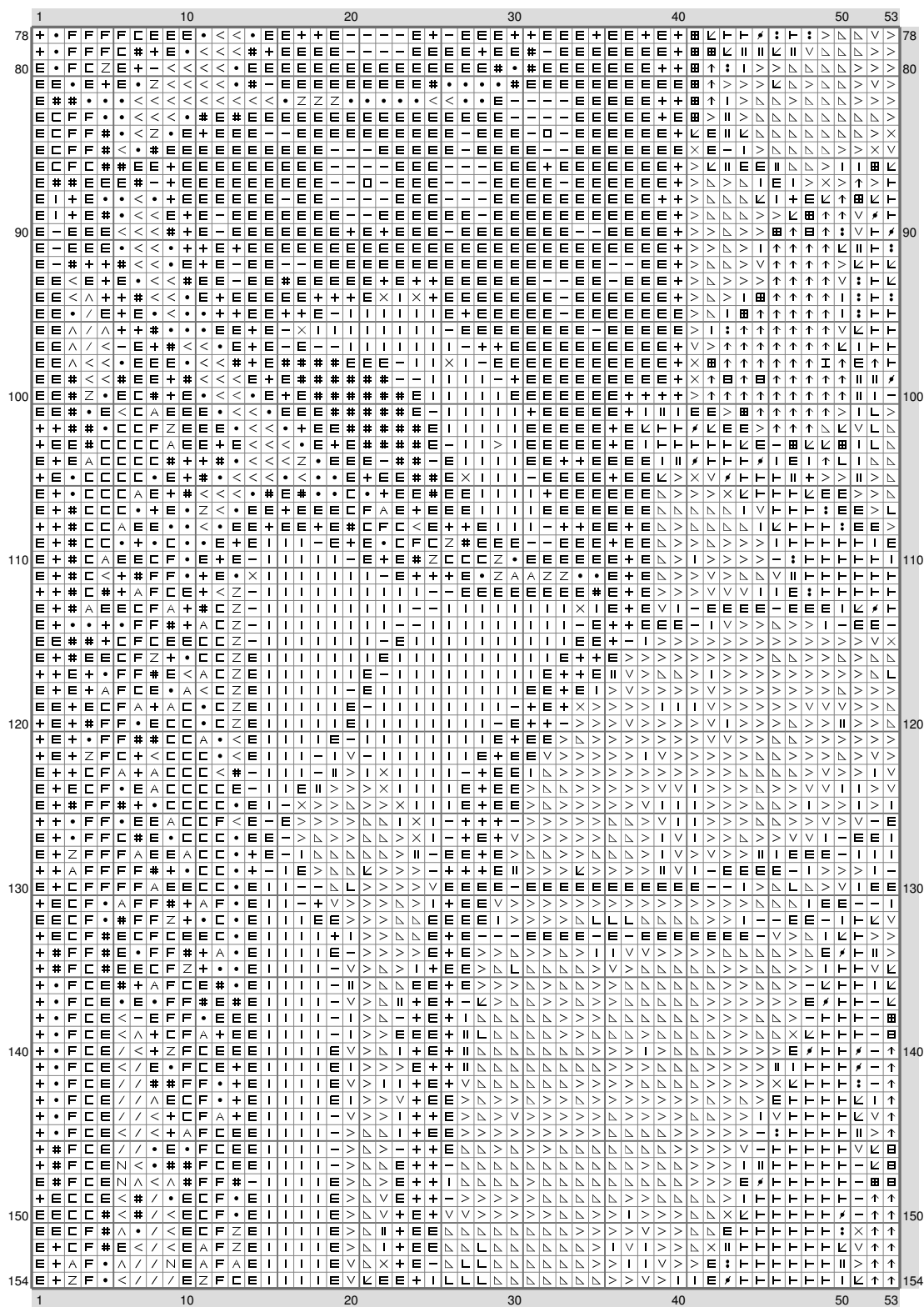


Untitled



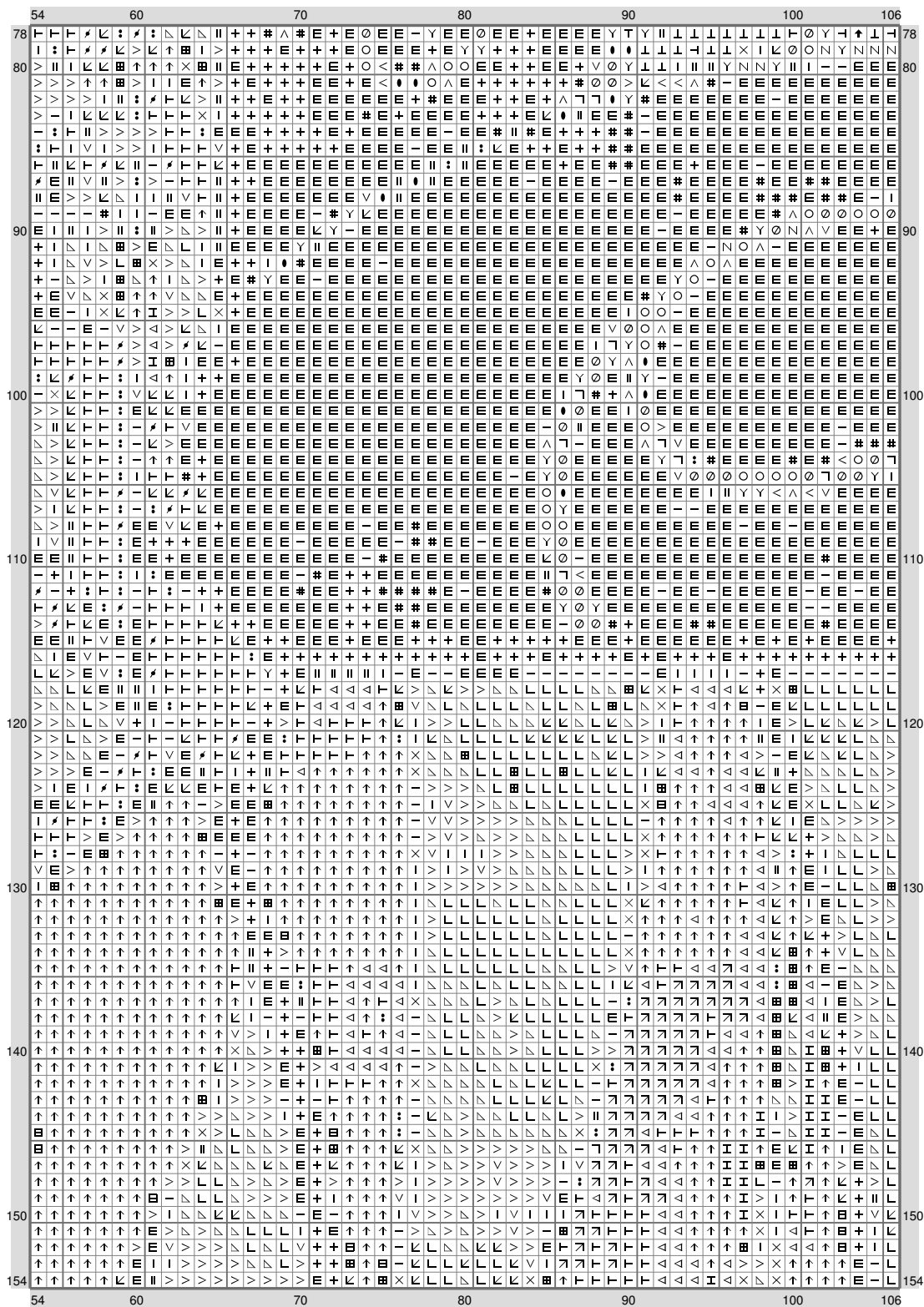
(This chart is printed using KG-Chart LE for Cross Stitch.)

Untitled



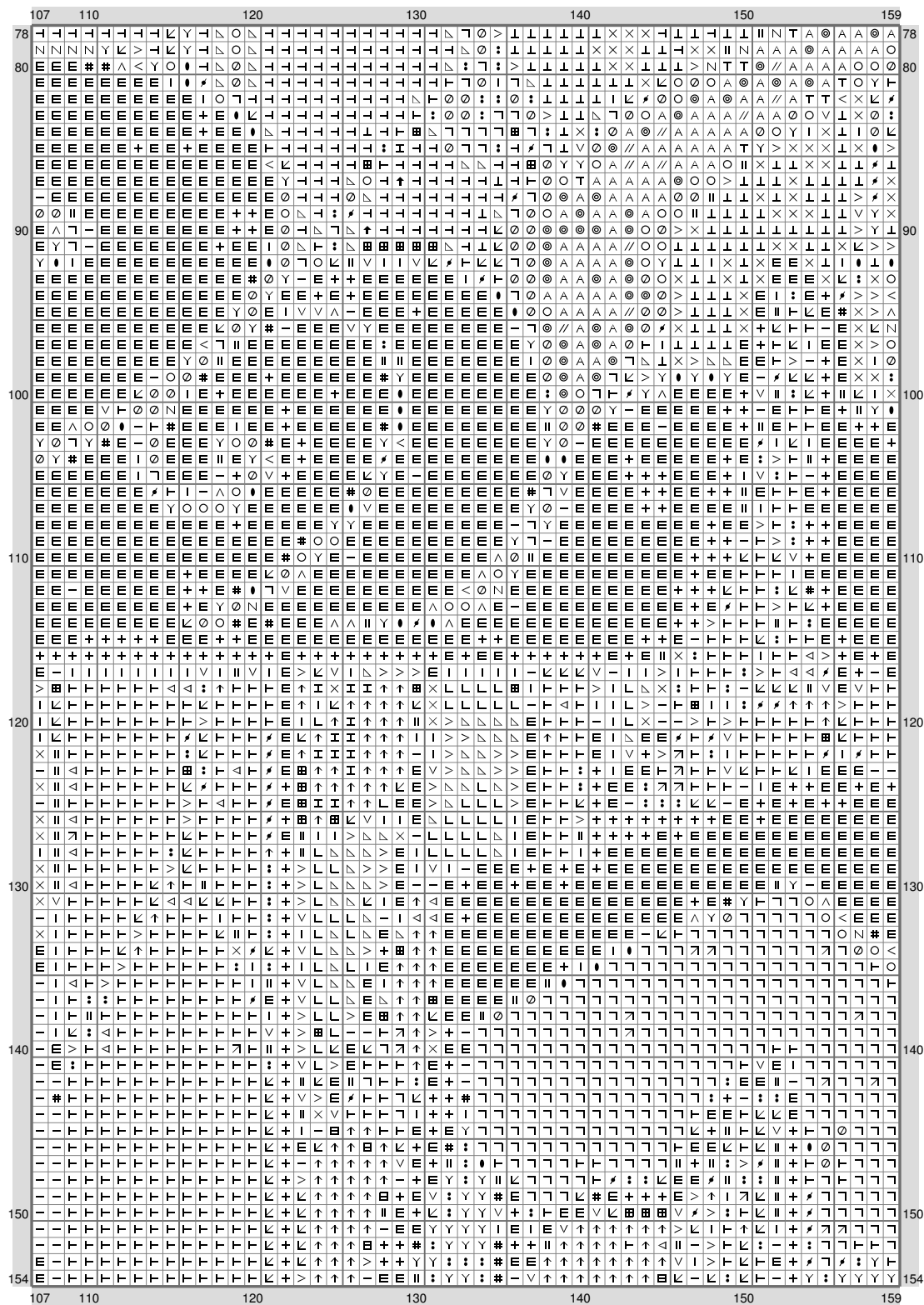
(This chart is printed using KG-Chart LE for Cross Stitch.)

Untitled



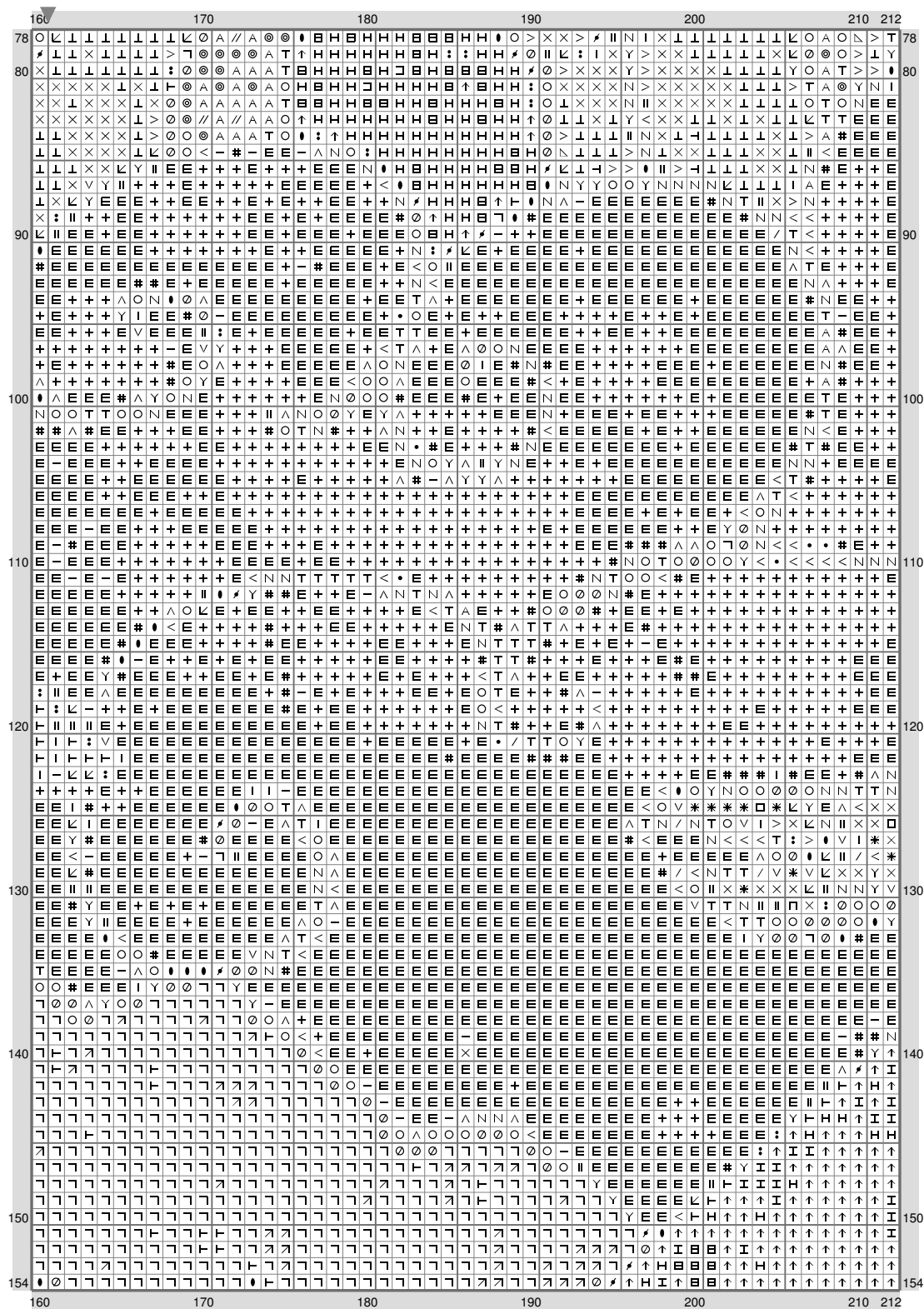
(This chart is printed using KG-Chart LE for Cross Stitch.)

Untitled



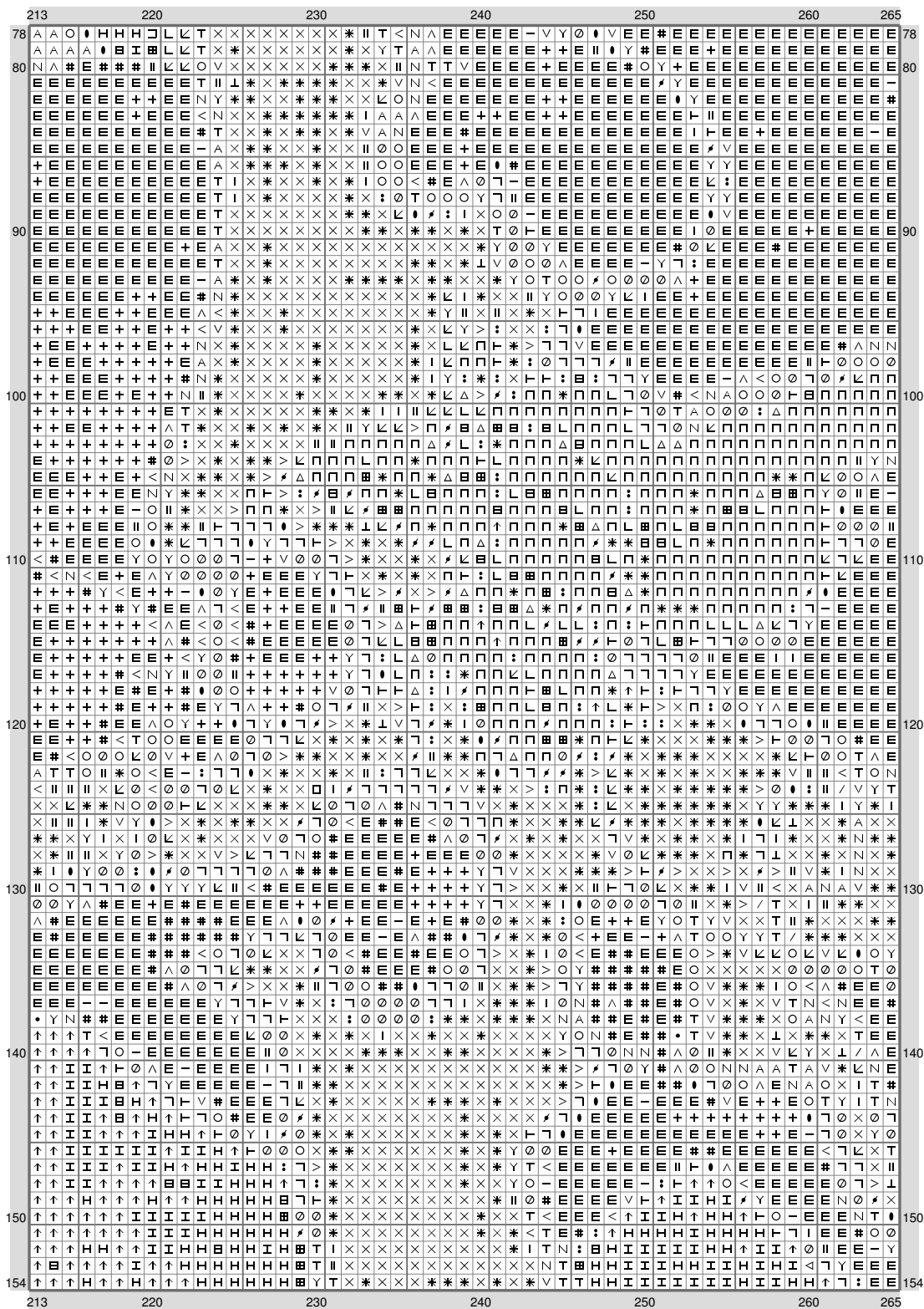
(This chart is printed using KG-Chart LE for Cross Stitch.)

Untitled



(This chart is printed using KG-Chart LE for Cross Stitch.)

Untitled



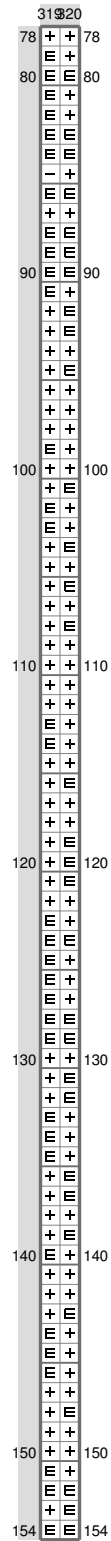
(This chart is printed using KG-Chart LE for Cross Stitch.)

Untitled

	266	270	280	290	300	310	318	
78	E	E	E	E	E	E	E	78
80	E	E	E	E	E	E	E	80
90	E	E	E	E	E	E	E	90
100	E	E	E	E	E	E	E	100
110	E	E	E	E	E	E	E	110
120	E	E	E	E	E	E	E	120
130	E	E	E	E	E	E	E	130
140	E	E	E	E	E	E	E	140
150	E	E	E	E	E	E	E	150
154	E	E	E	E	E	E	E	154

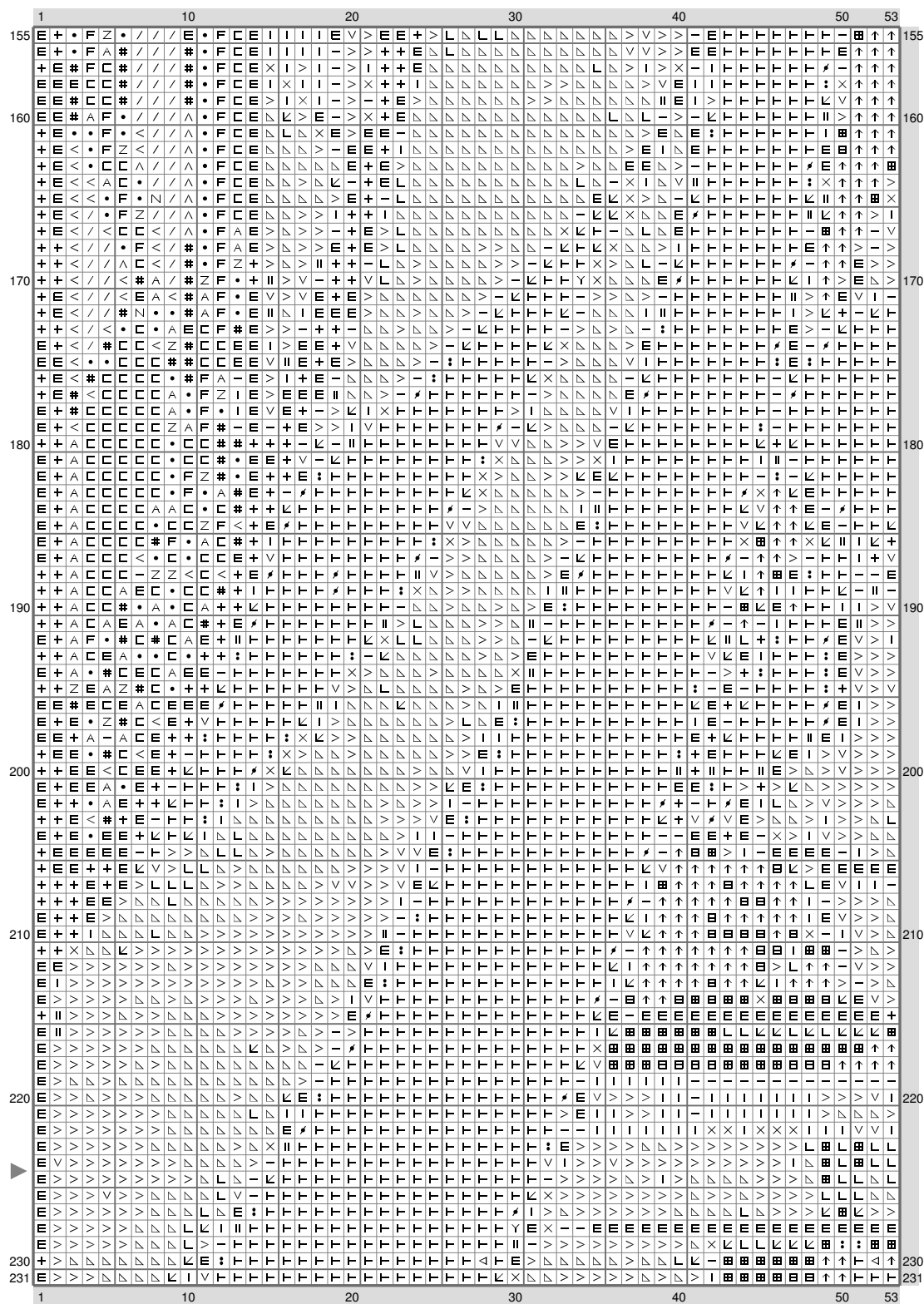
(This chart is printed using KG-Chart LE for Cross Stitch.)

Untitled



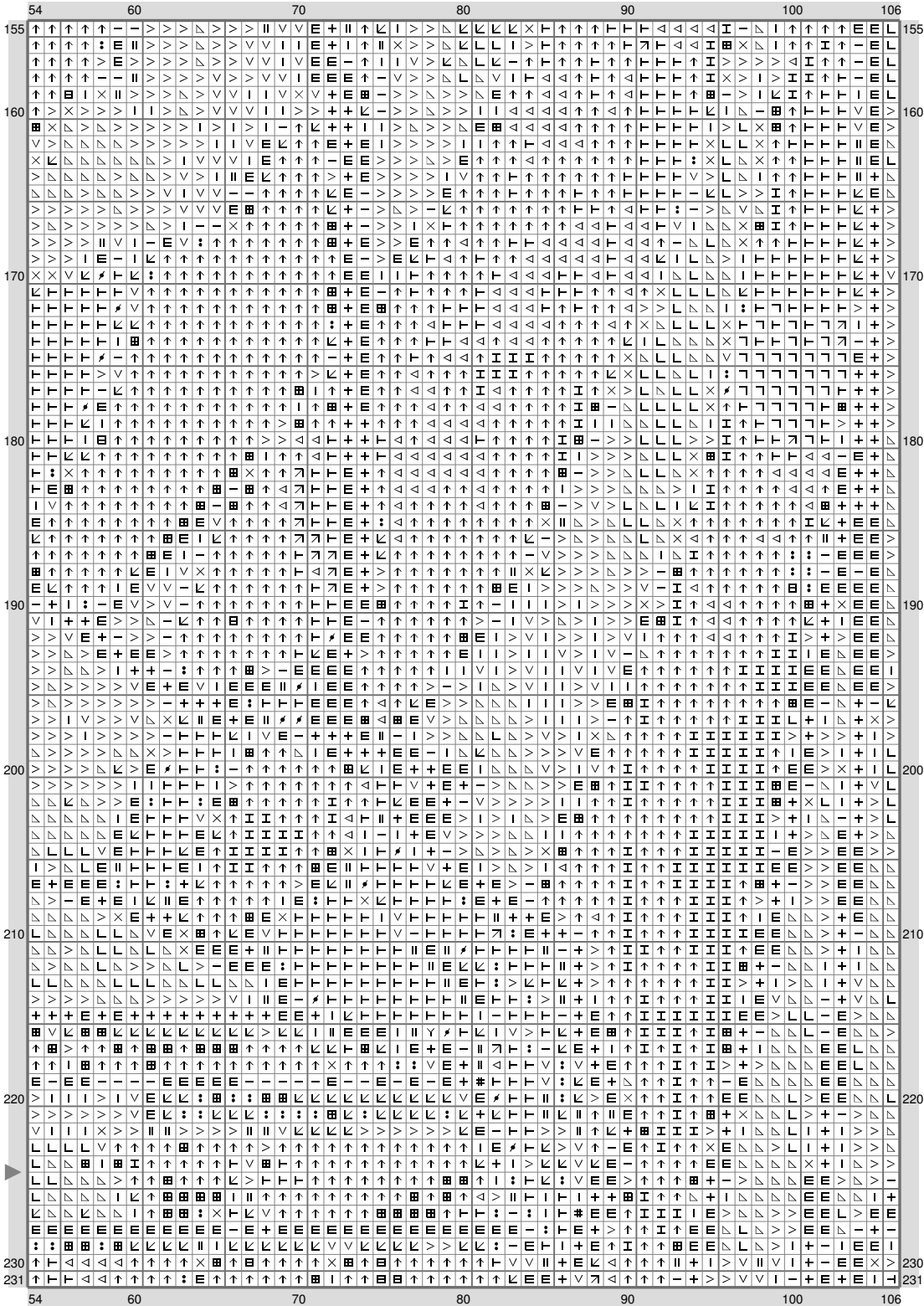
(This chart is printed using KG-Chart LE for Cross Stitch.)

Untitled



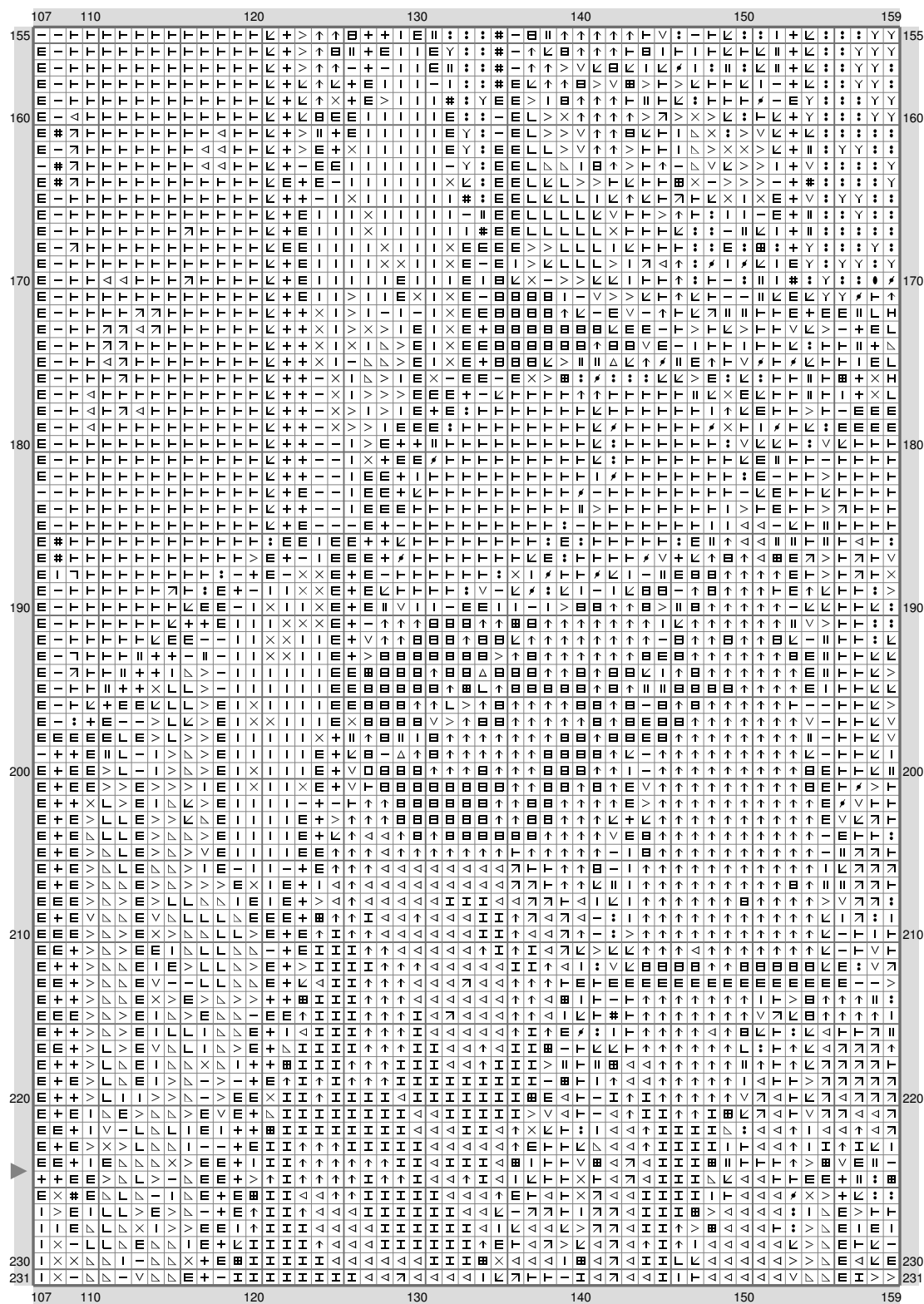
(This chart is printed using KG-Chart LE for Cross Stitch.)

Untitled

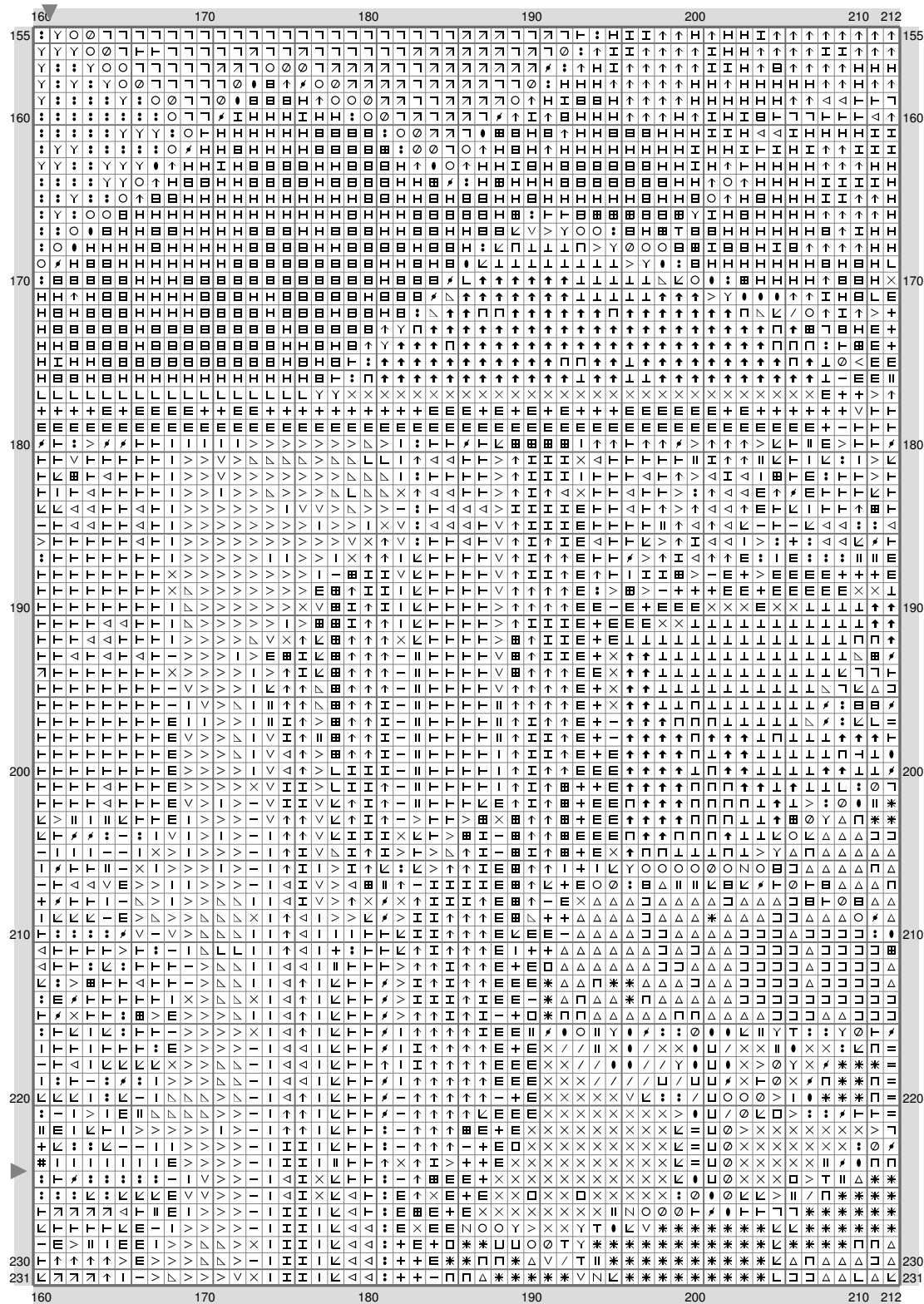


(This chart is printed using KG-Chart LE for Cross Stitch.)

Untitled

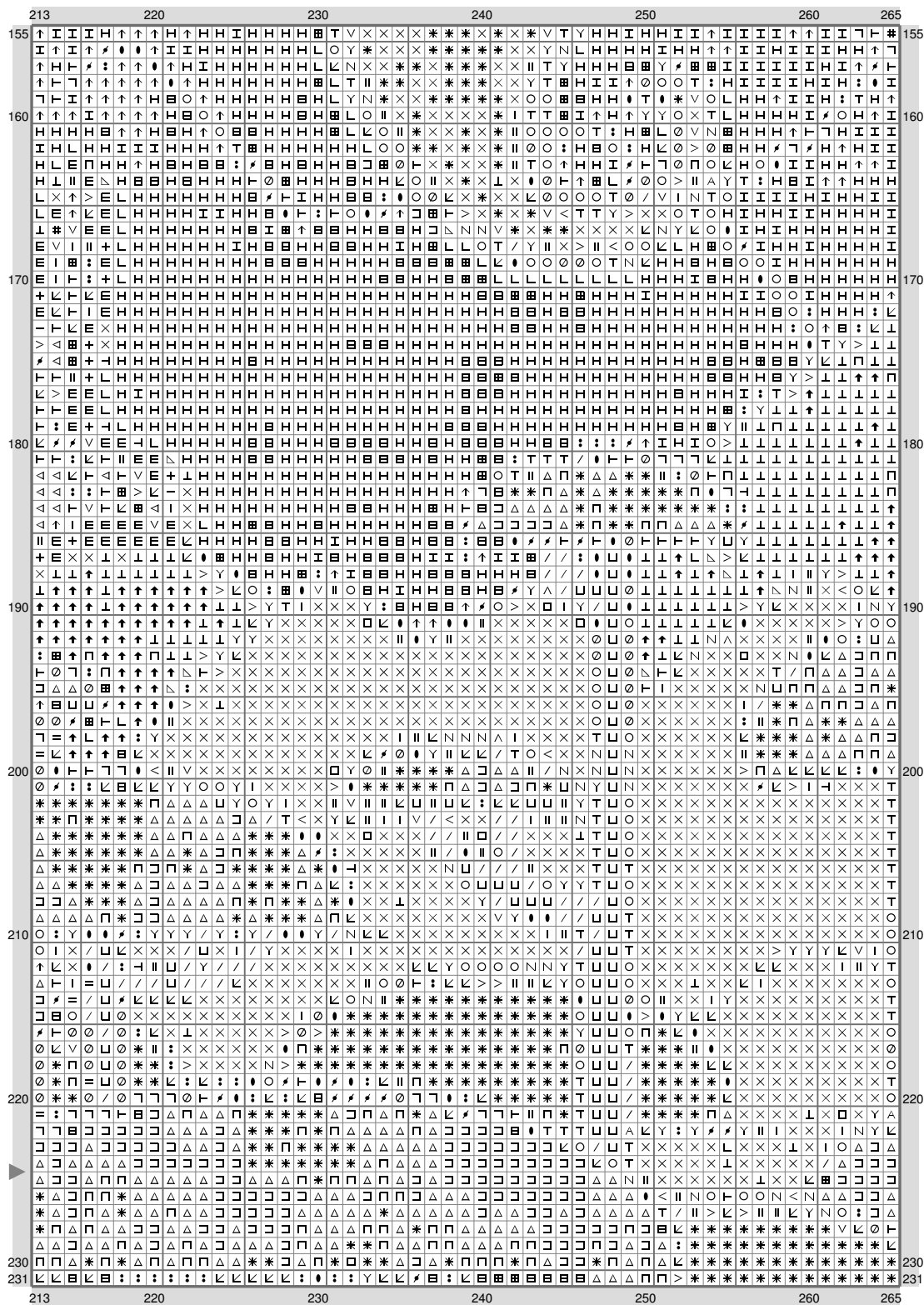


Untitled

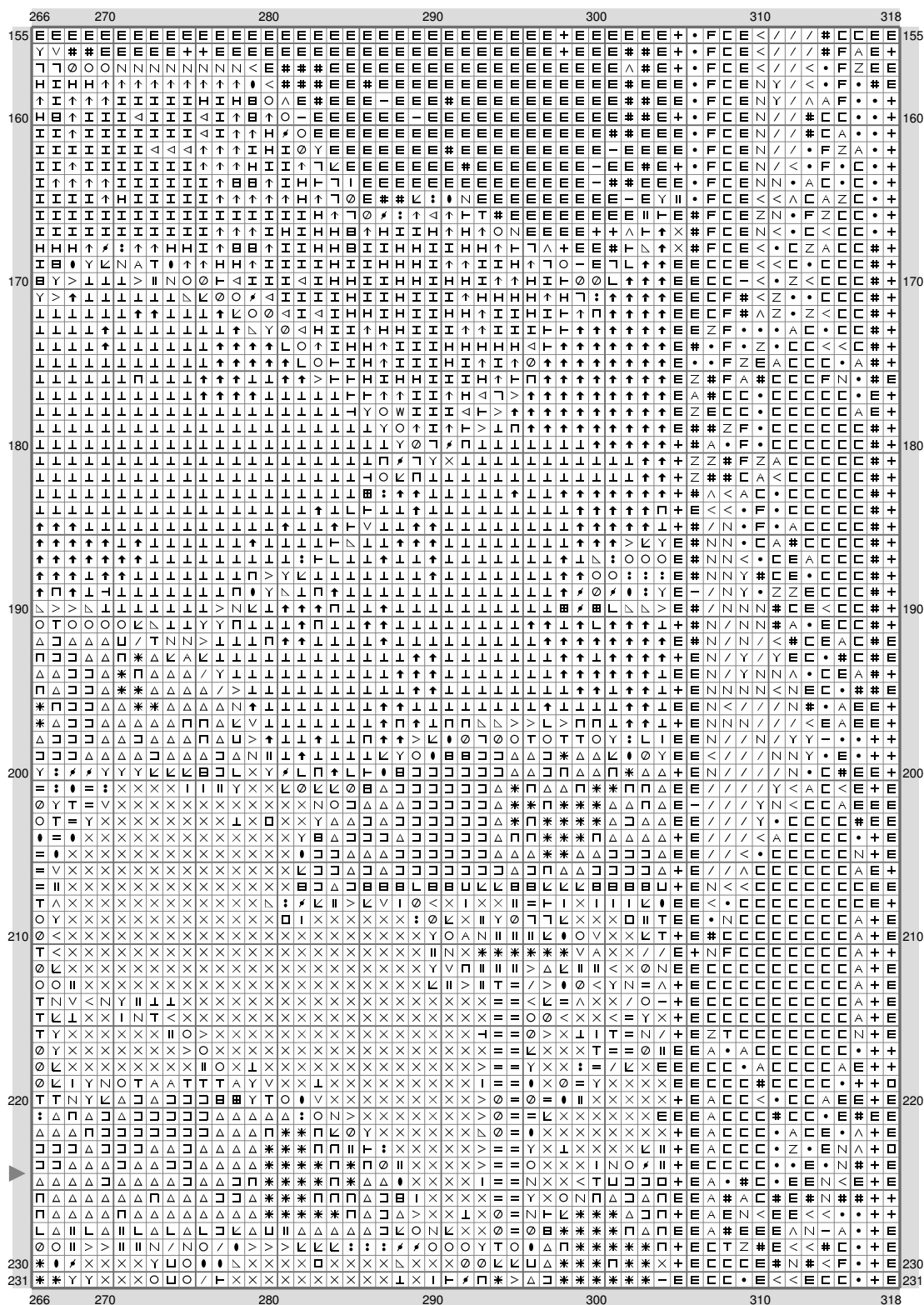


(This chart is printed using KG-Chart LE for Cross Stitch.)

Untitled

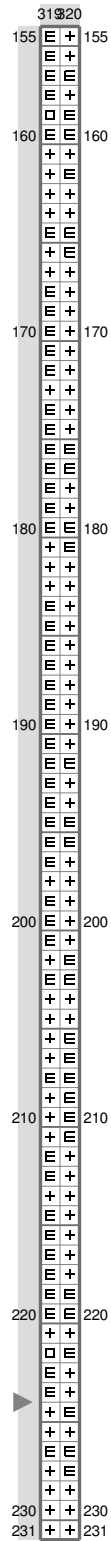


Untitled



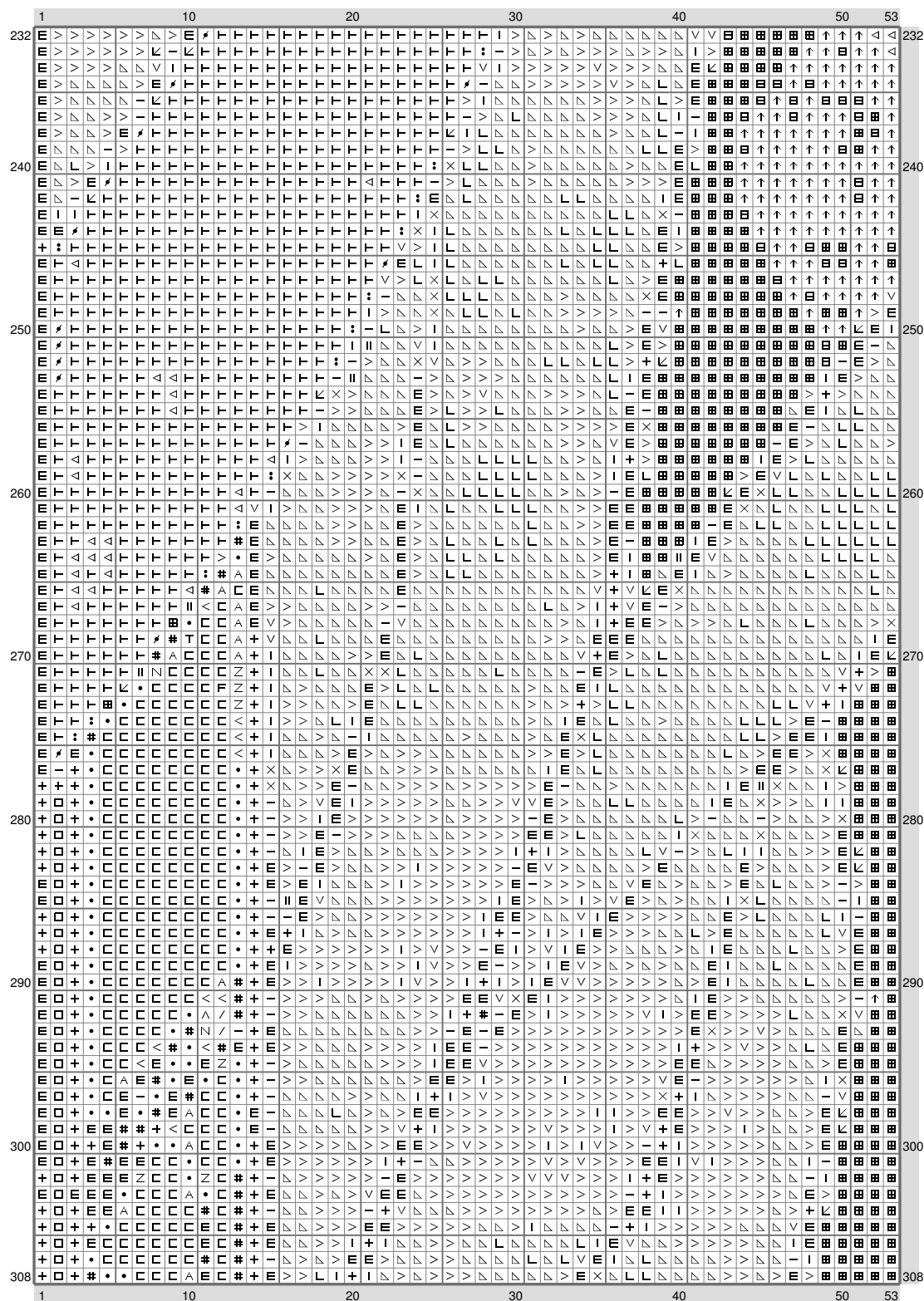
(This chart is printed using KG-Chart LE for Cross Stitch.)

Untitled



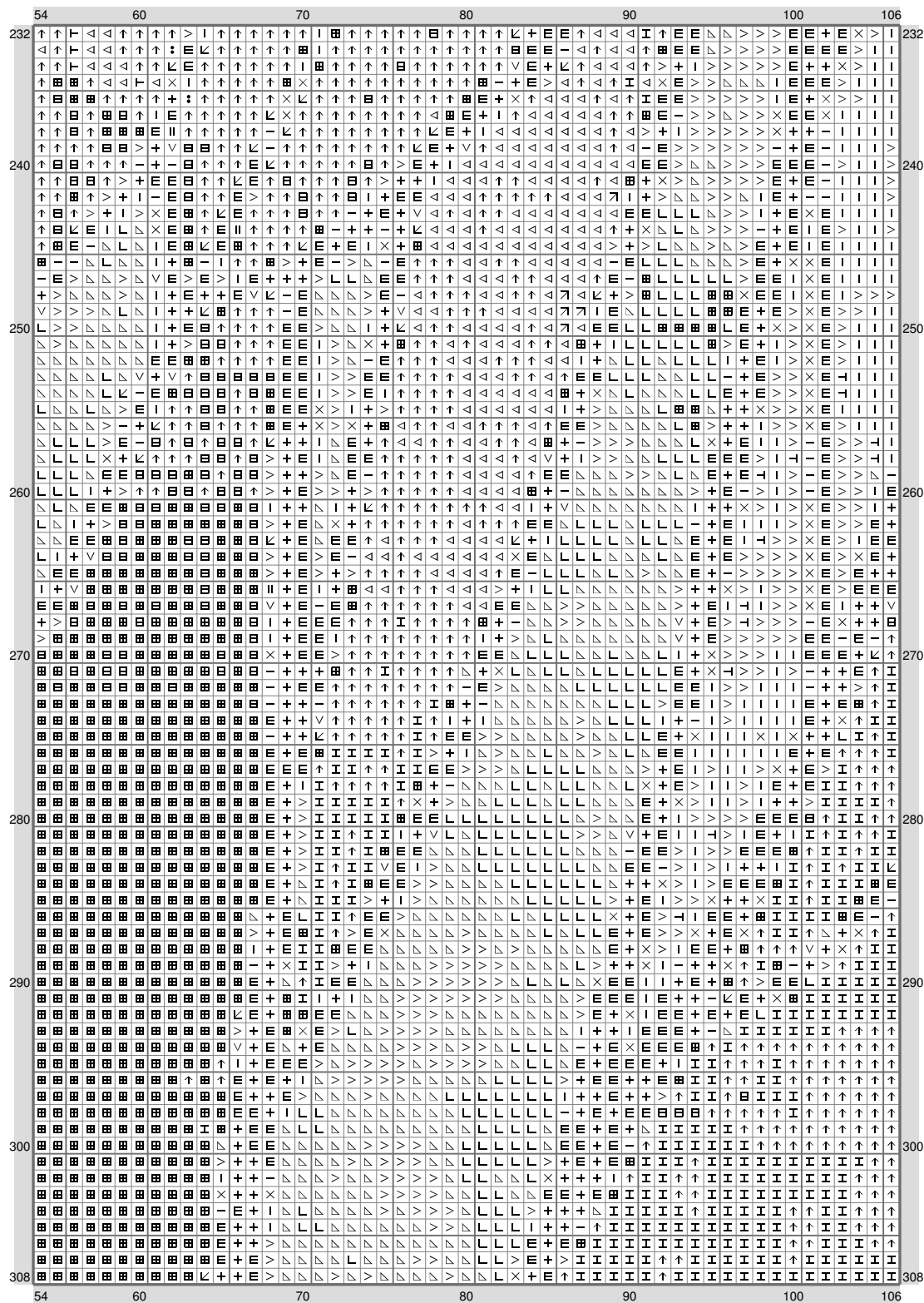
(This chart is printed using KG-Chart LE for Cross Stitch.)

Untitled



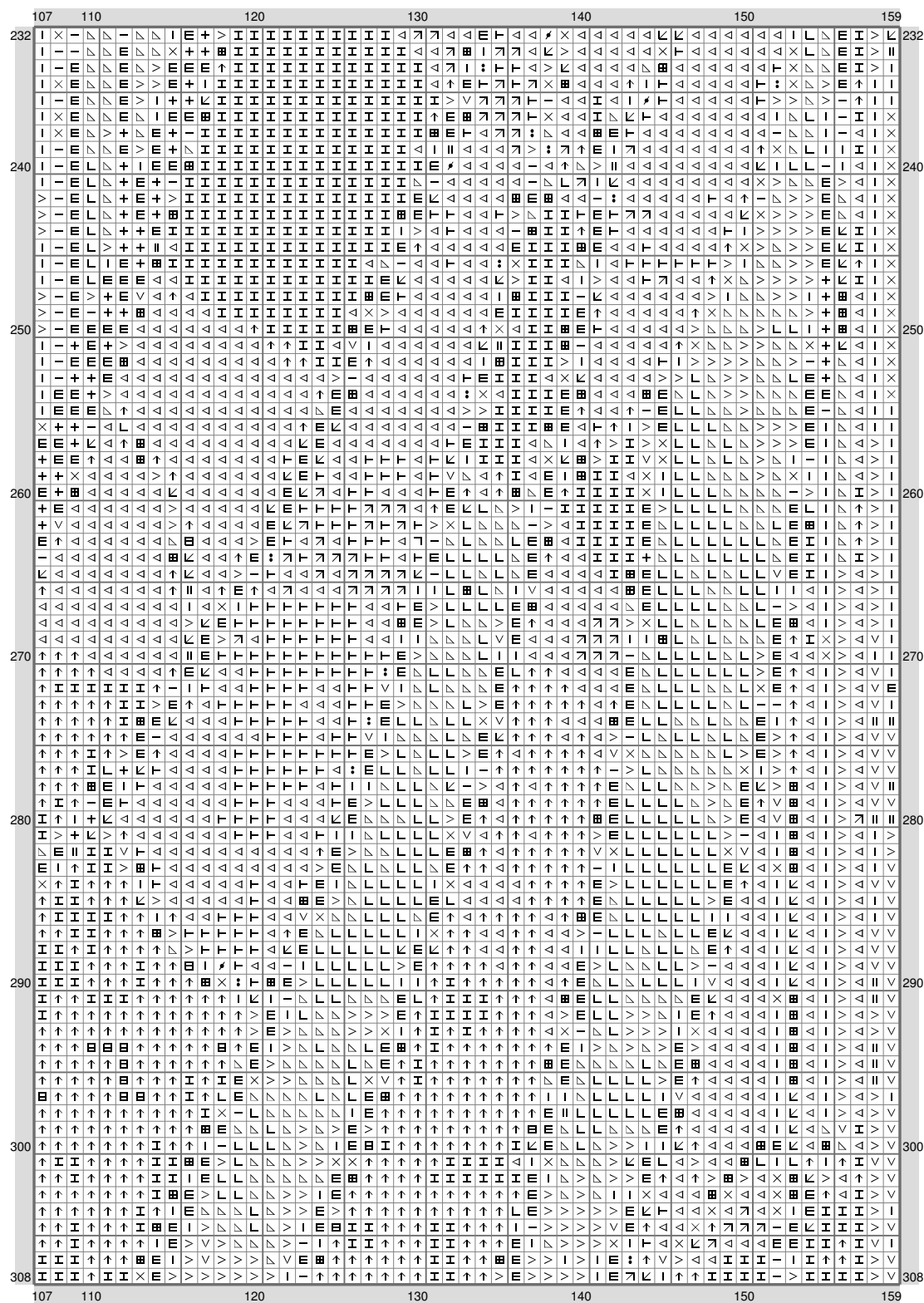
(This chart is printed using KG-Chart LE for Cross Stitch.)

Untitled



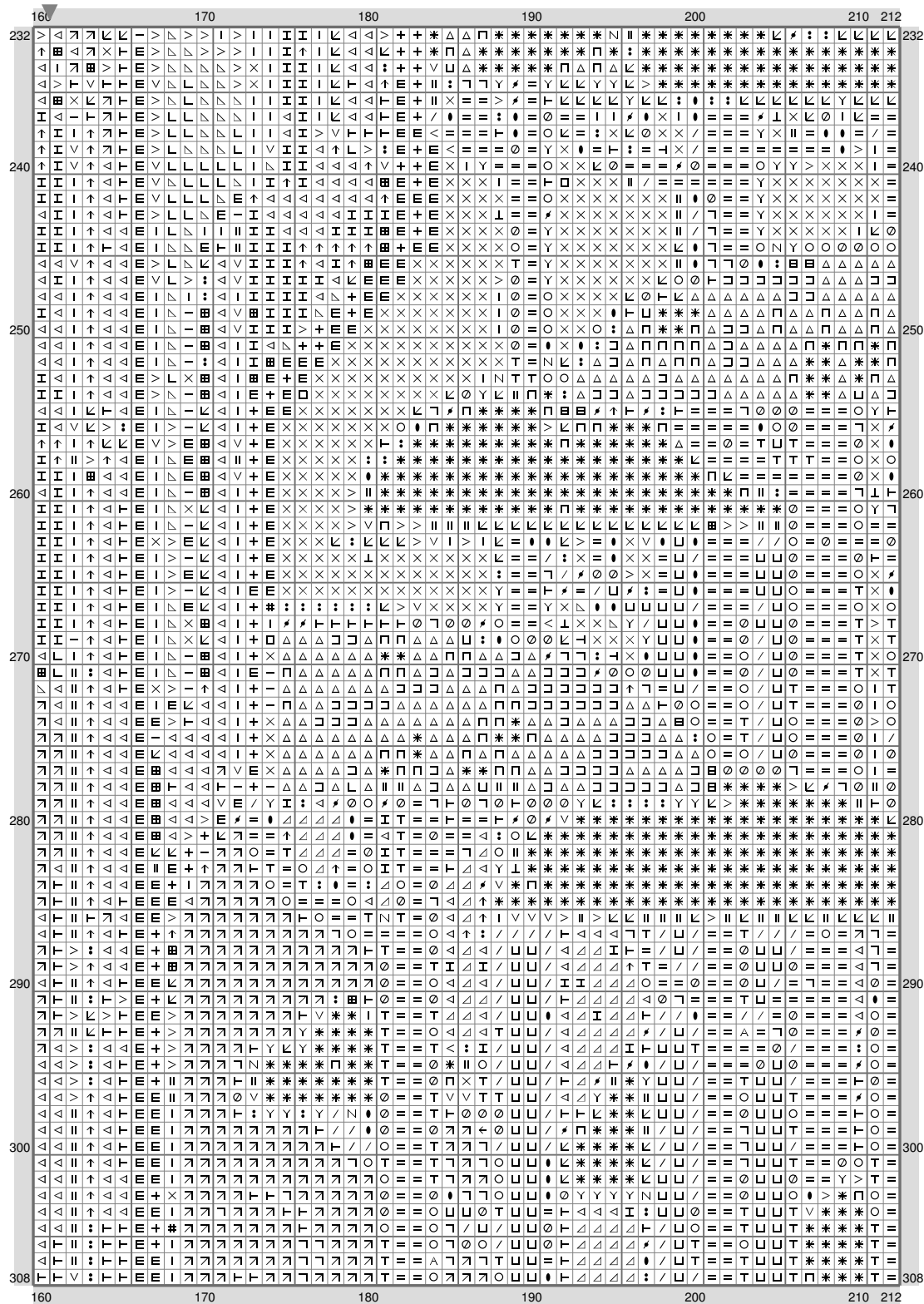
(This chart is printed using KG-Chart LE for Cross Stitch.)

Untitled



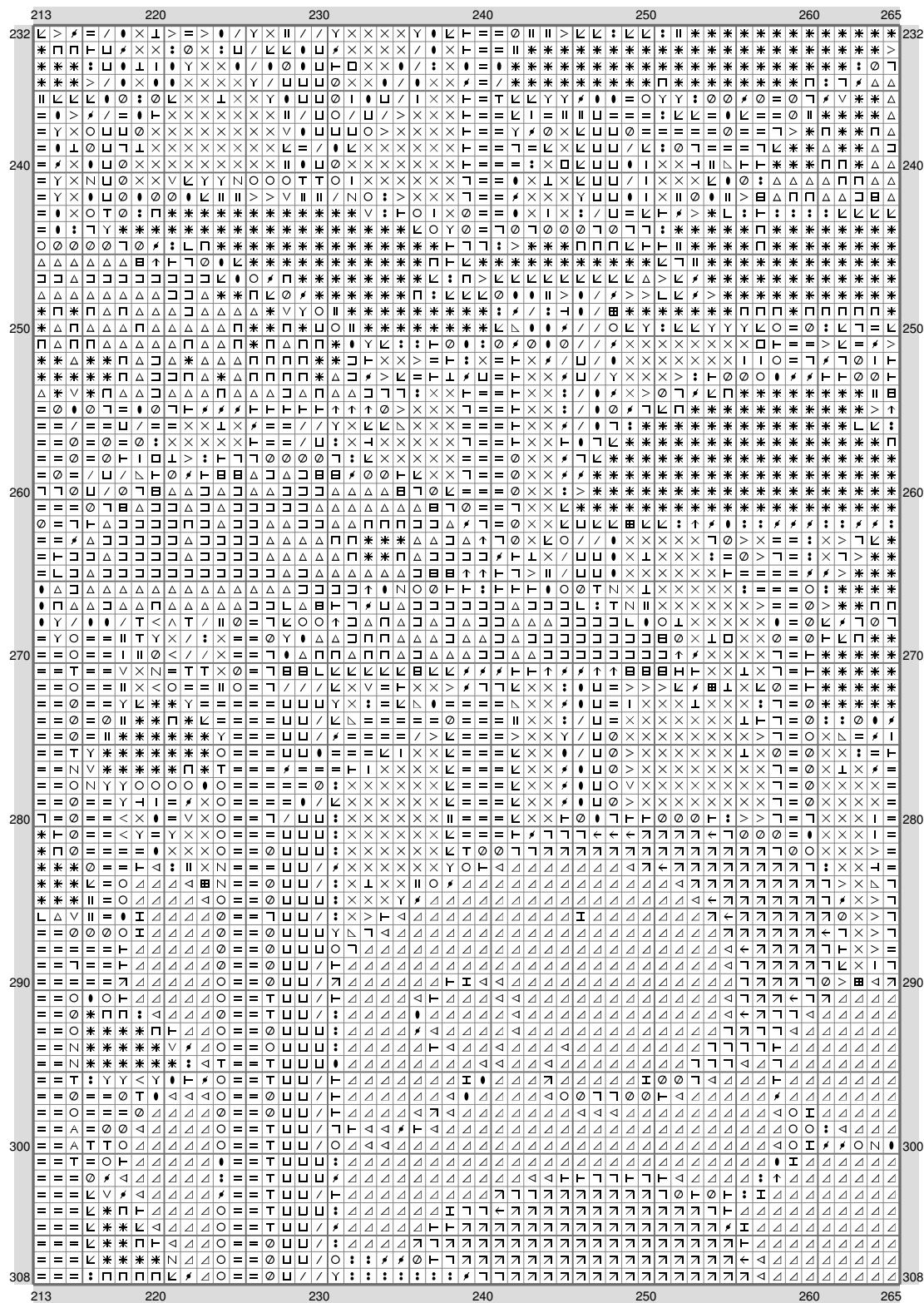
(This chart is printed using KG-Chart LE for Cross Stitch.)

Untitled



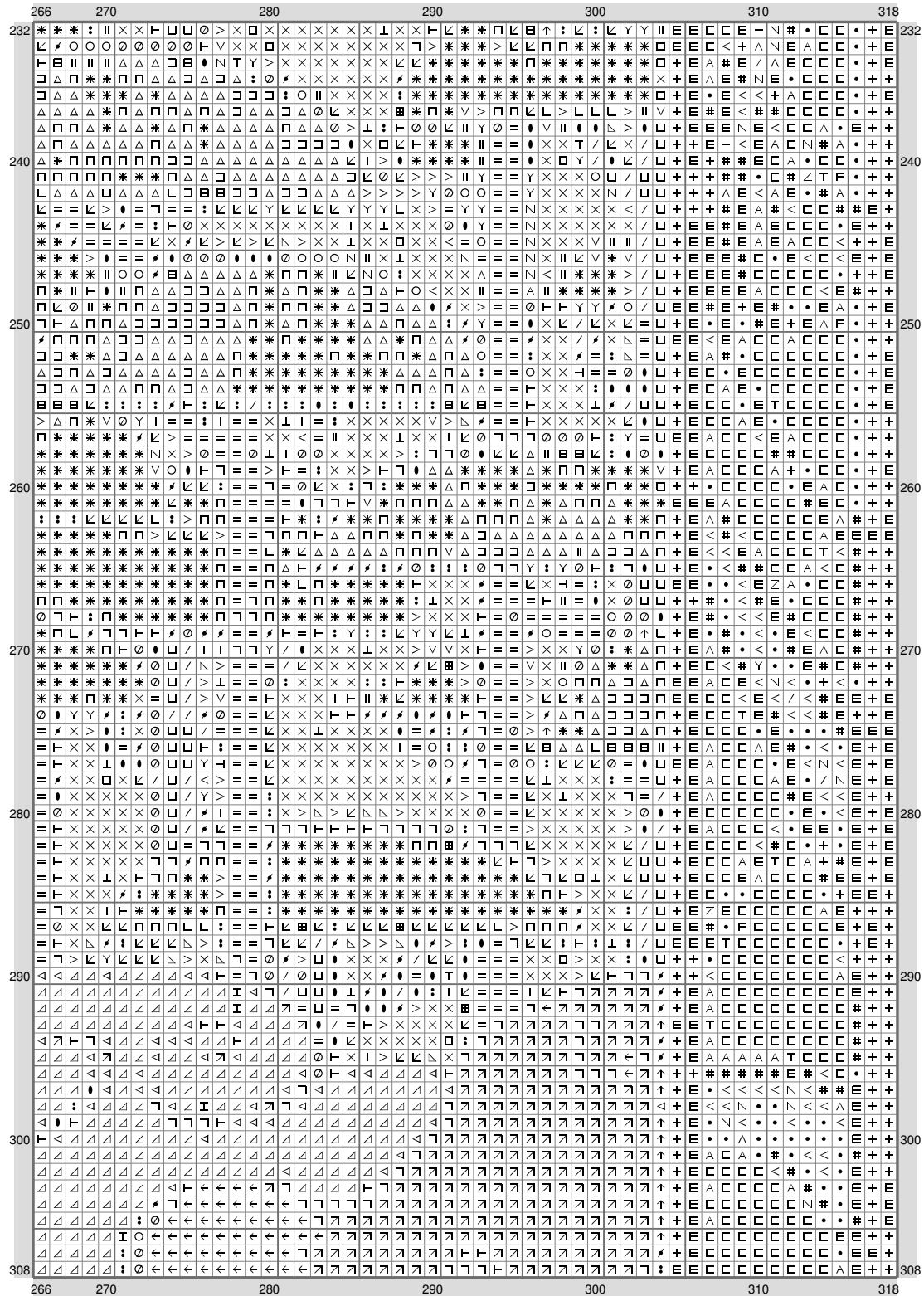
(This chart is printed using KG-Chart LE for Cross Stitch.)

Untitled



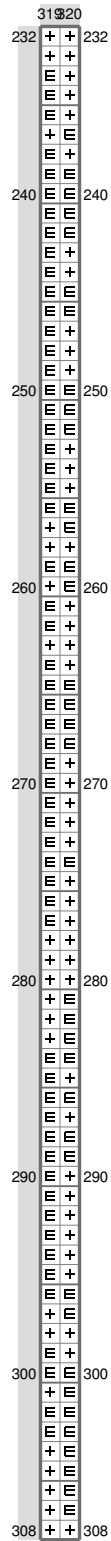
(This chart is printed using KG-Chart LE for Cross Stitch.)

Untitled

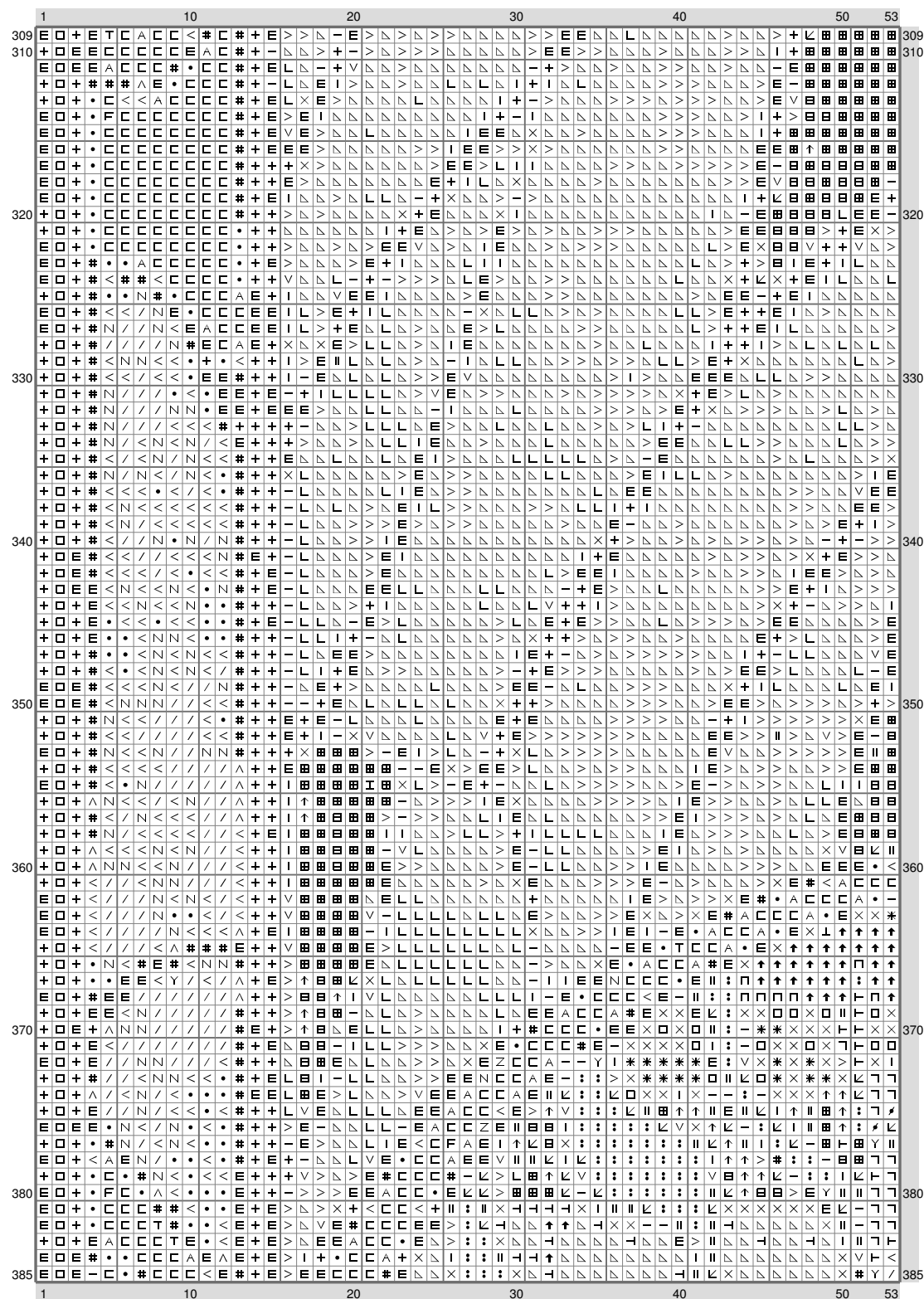


(This chart is printed using KG-Chart LE for Cross Stitch.)

Untitled

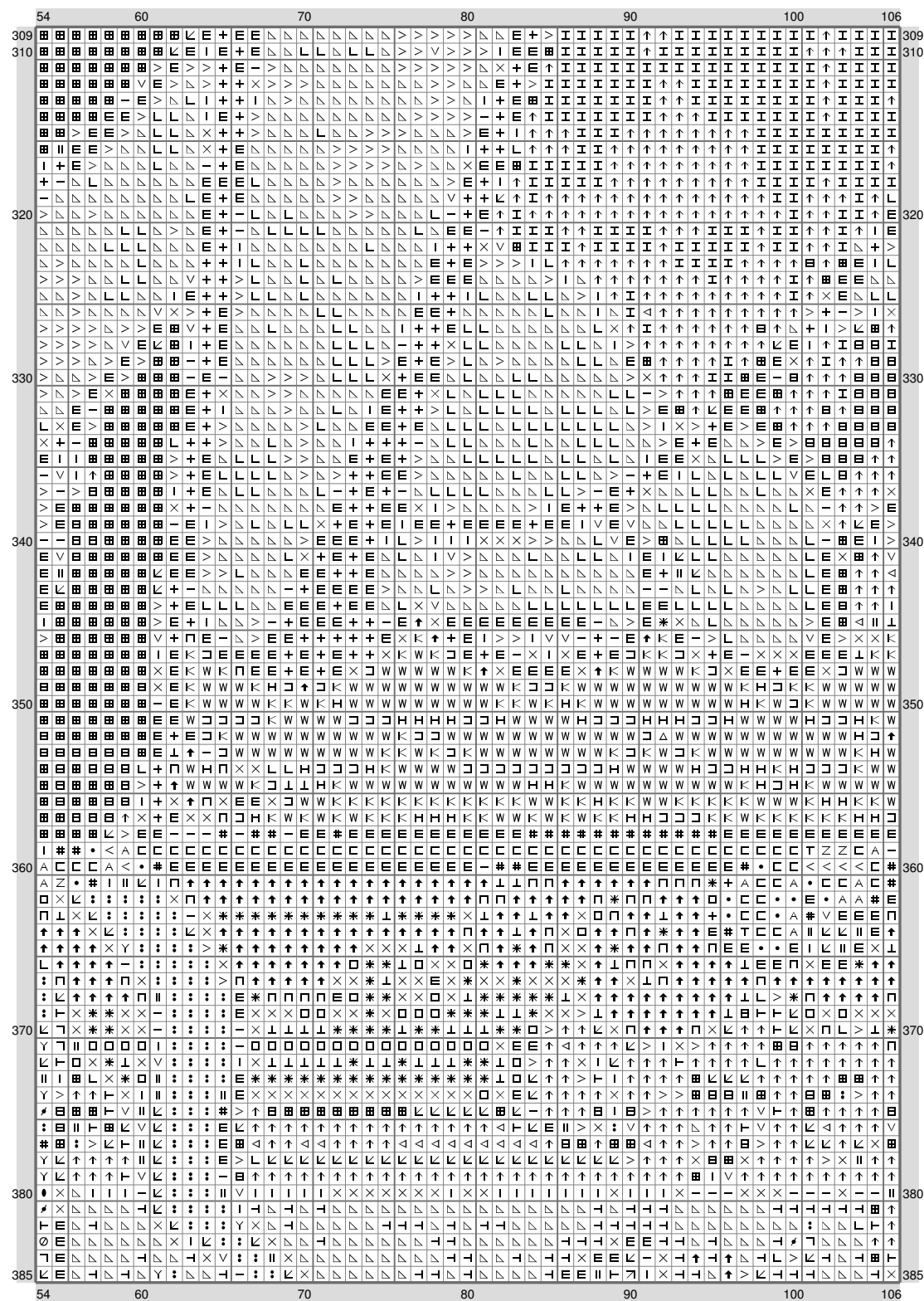


Untitled



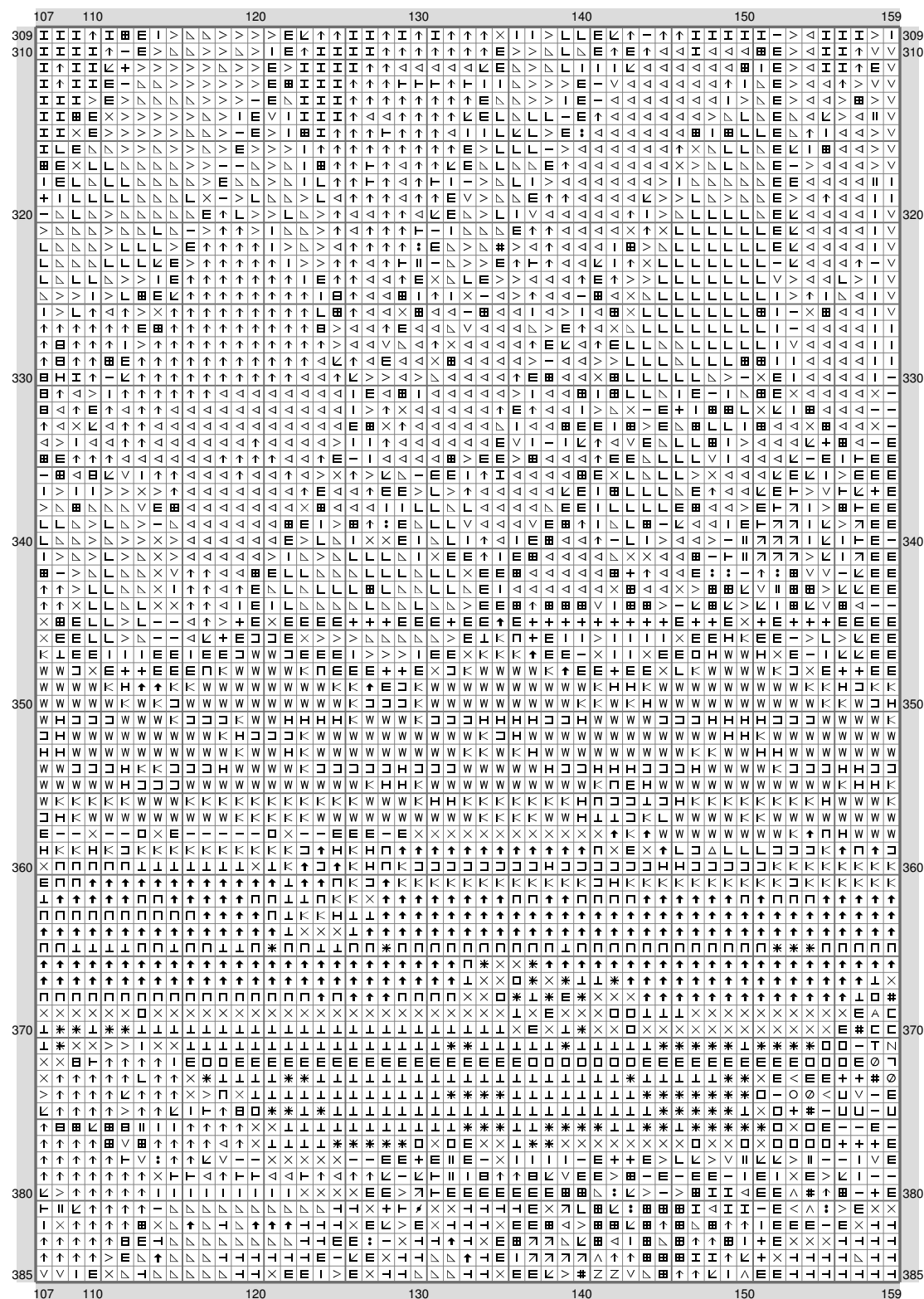
(This chart is printed using KG-Chart LE for Cross Stitch.)

Untitled



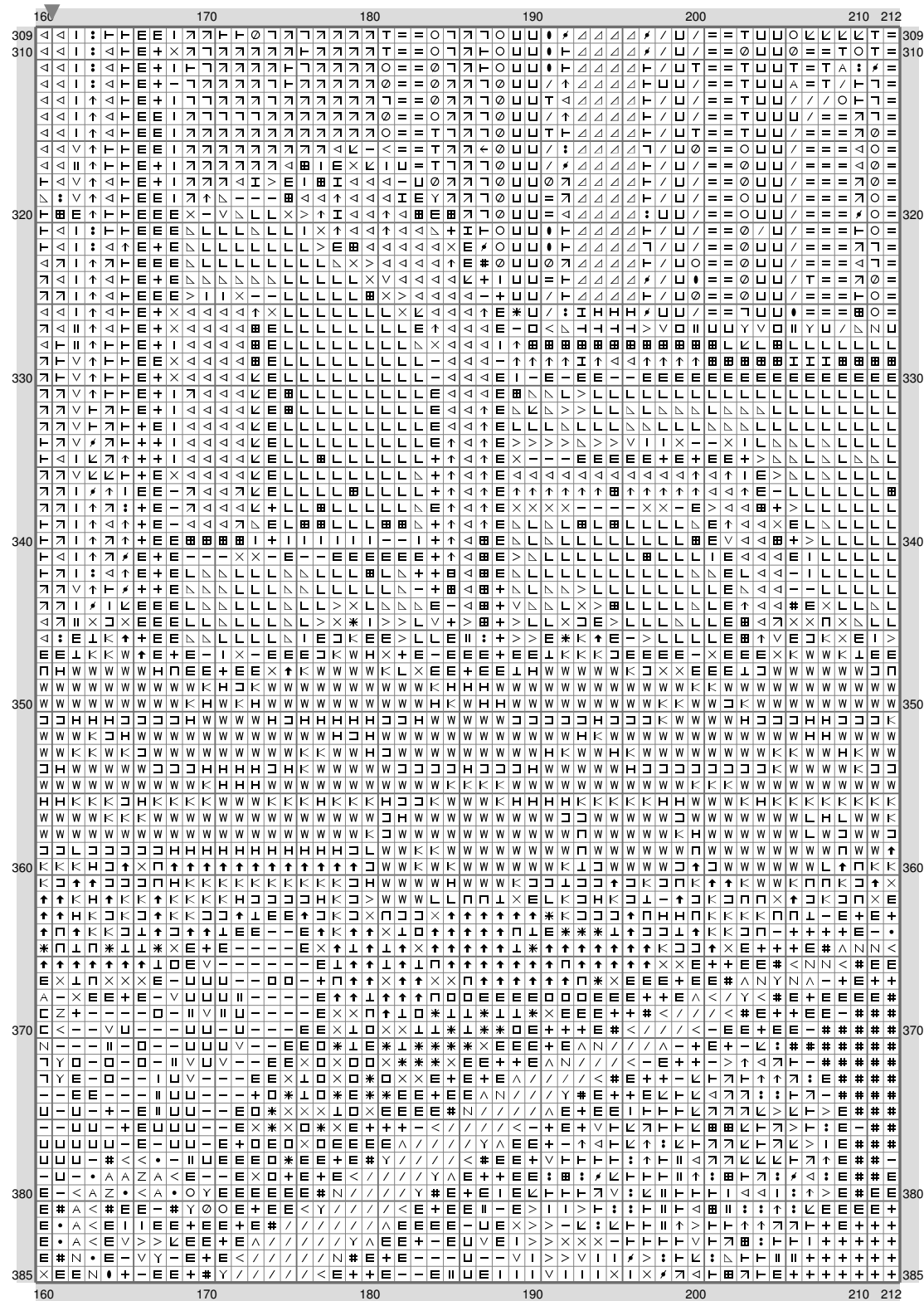
(This chart is printed using KG-Chart LE for Cross Stitch.)

Untitled



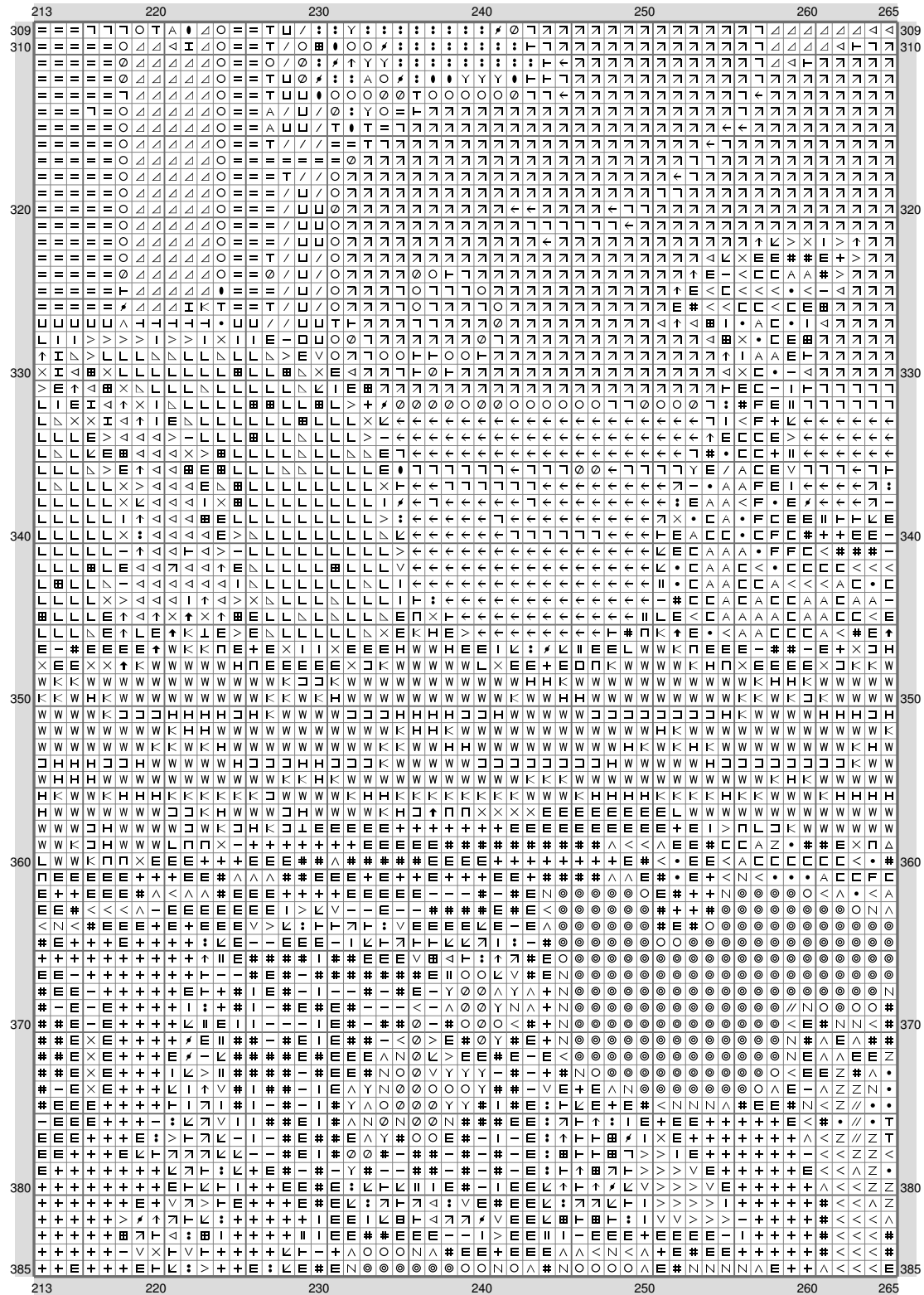
(This chart is printed using KG-Chart LE for Cross Stitch.)

Untitled

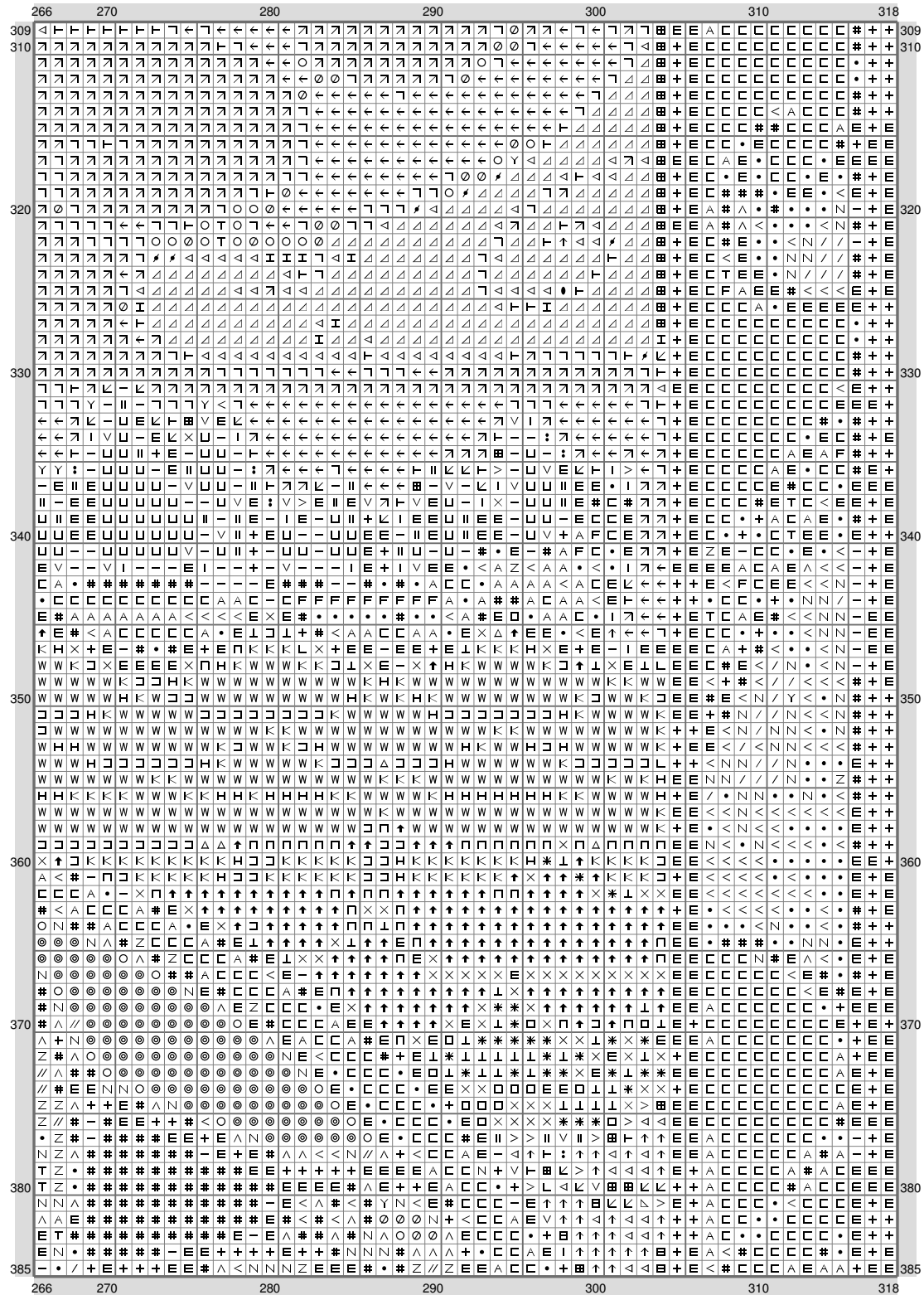


(This chart is printed using KG-Chart LE for Cross Stitch.)

Untitled



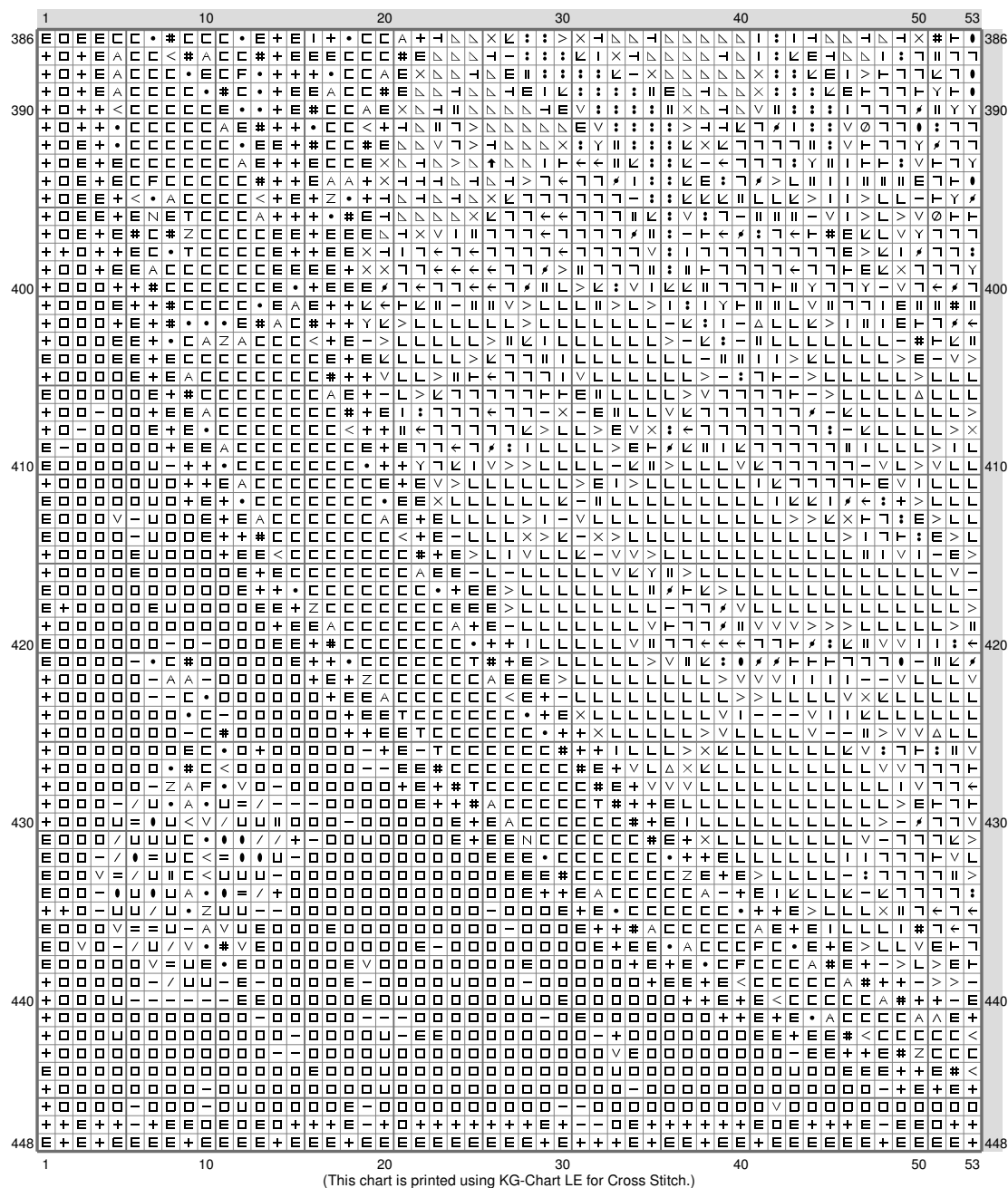
Untitled



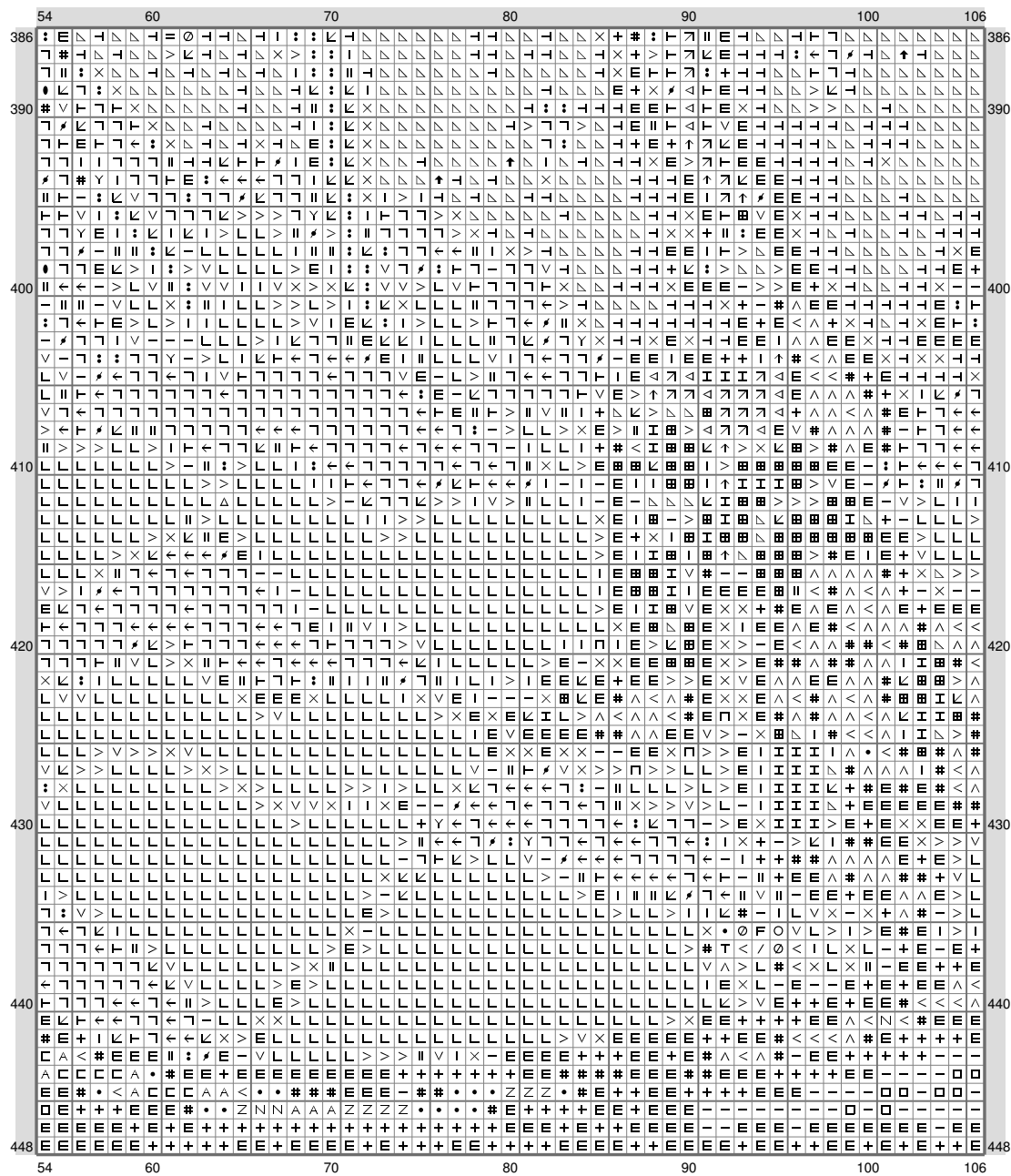
Untitled

	319	320	
309	E	+	309
310	E	E	310
	E	+	
	E	E	
	E	E	
	E	E	
	E	E	
	E	+	
	E	E	
	+	E	
	+	E	
	+	E	
320	E	E	320
	E	E	
	E	E	
	E	E	
	E	E	
	E	E	
	E	+	
	E	+	
	E	+	
	E	+	
330	E	+	330
	E	+	
	E	+	
	E	+	
	E	+	
	E	+	
	E	+	
	+	E	
	E	E	
	E	E	
340	+	E	340
	+	E	
	E	E	
	E	E	
	+	E	
	E	E	
	E	E	
	E	E	
	E	E	
	E	E	
350	E	E	350
	+	E	
	E	+	
	E	E	
	E	E	
	E	E	
	E	+	
	E	+	
	E	+	
	E	+	
360	E	+	360
	E	E	
	E	E	
	+	E	
	E	+	
	E	E	
	E	E	
	E	E	
	E	E	
	+	E	
	+	E	
370	+	E	370
	+	E	
	+	E	
	E	E	
	+	+	
	+	+	
	E	+	
	□	E	
	□	E	
	+	E	
380	E	+	380
	E	+	
	E	+	
	E	+	
385	E	+	385

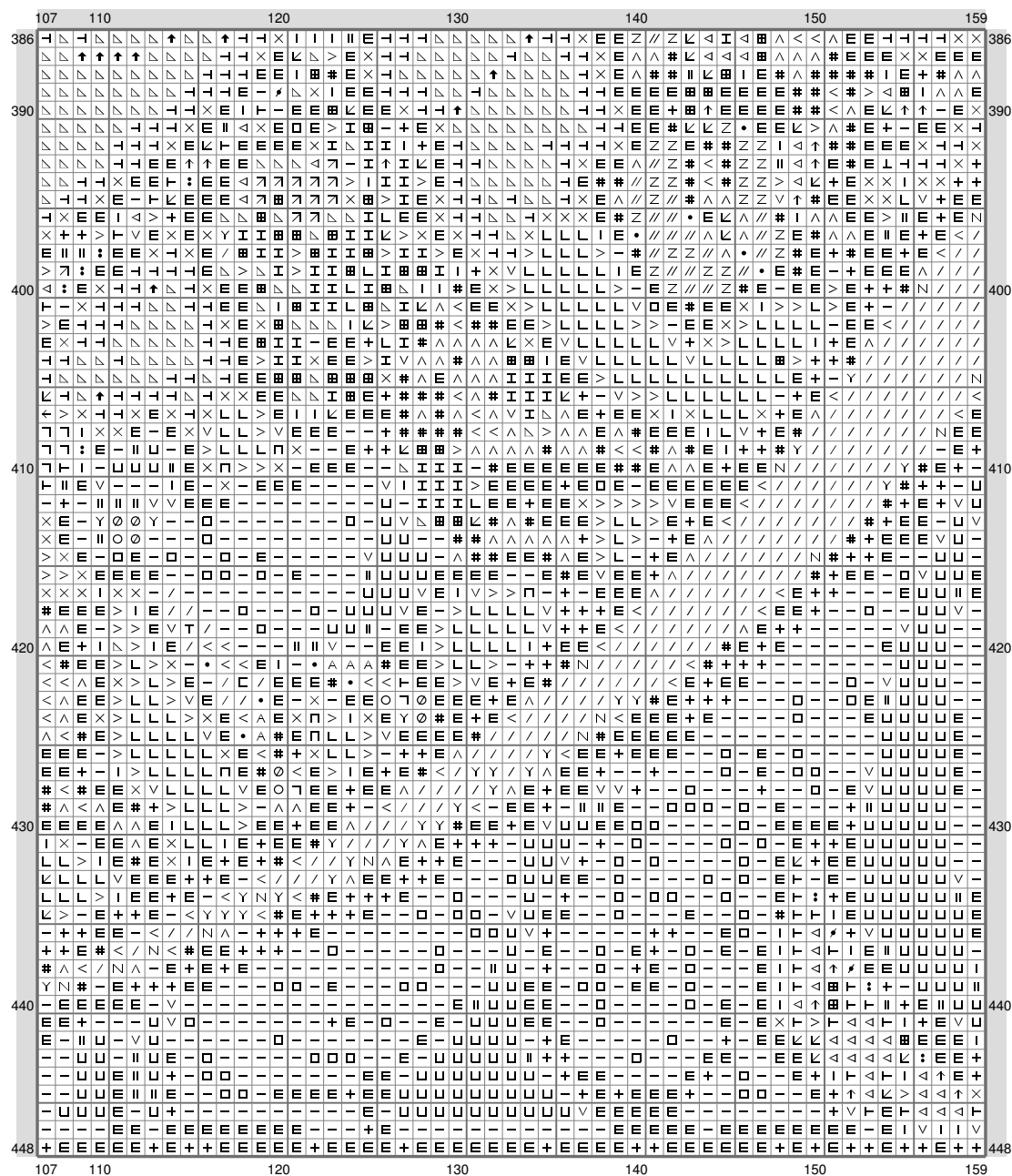
Untitled



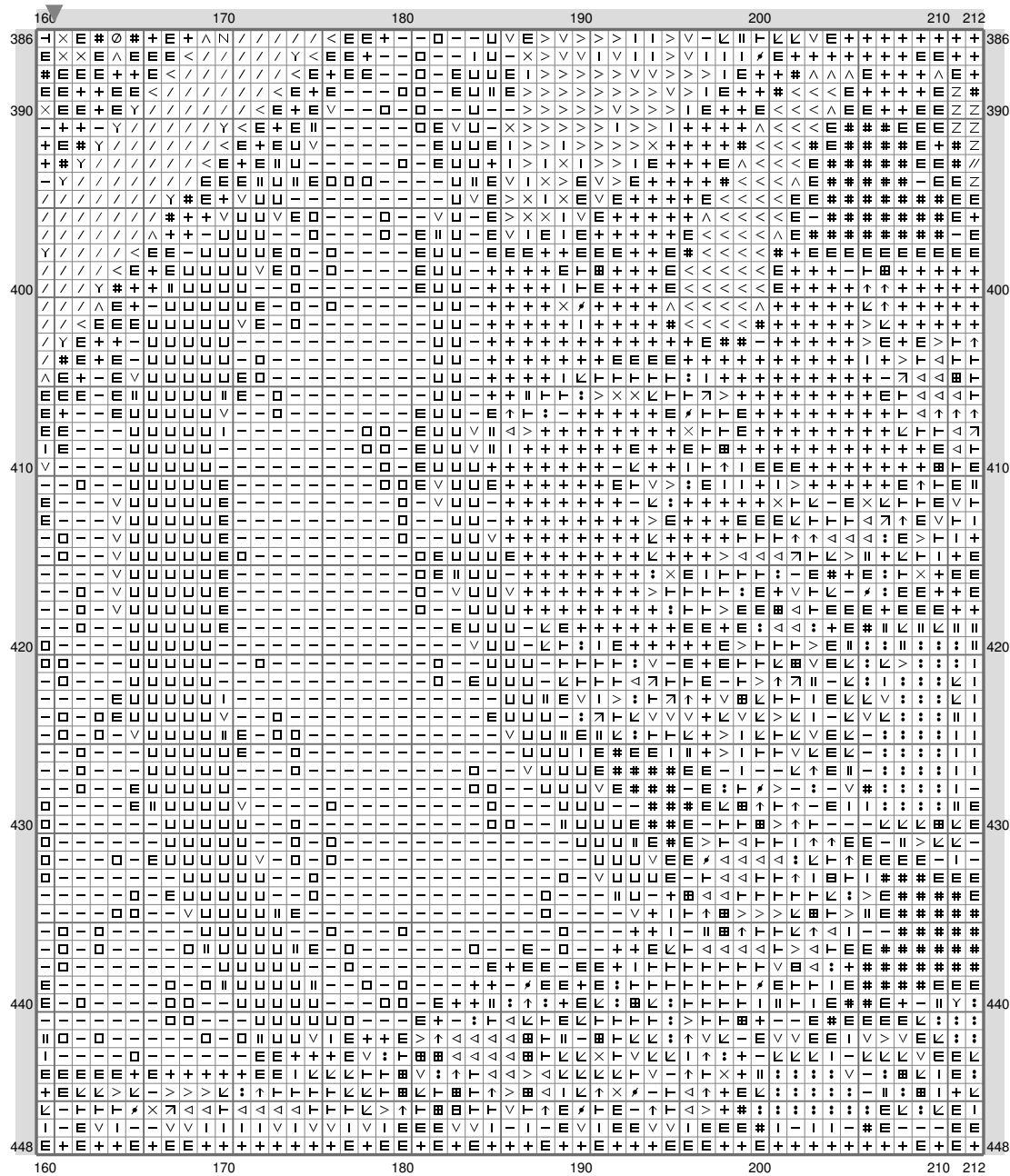
Untitled



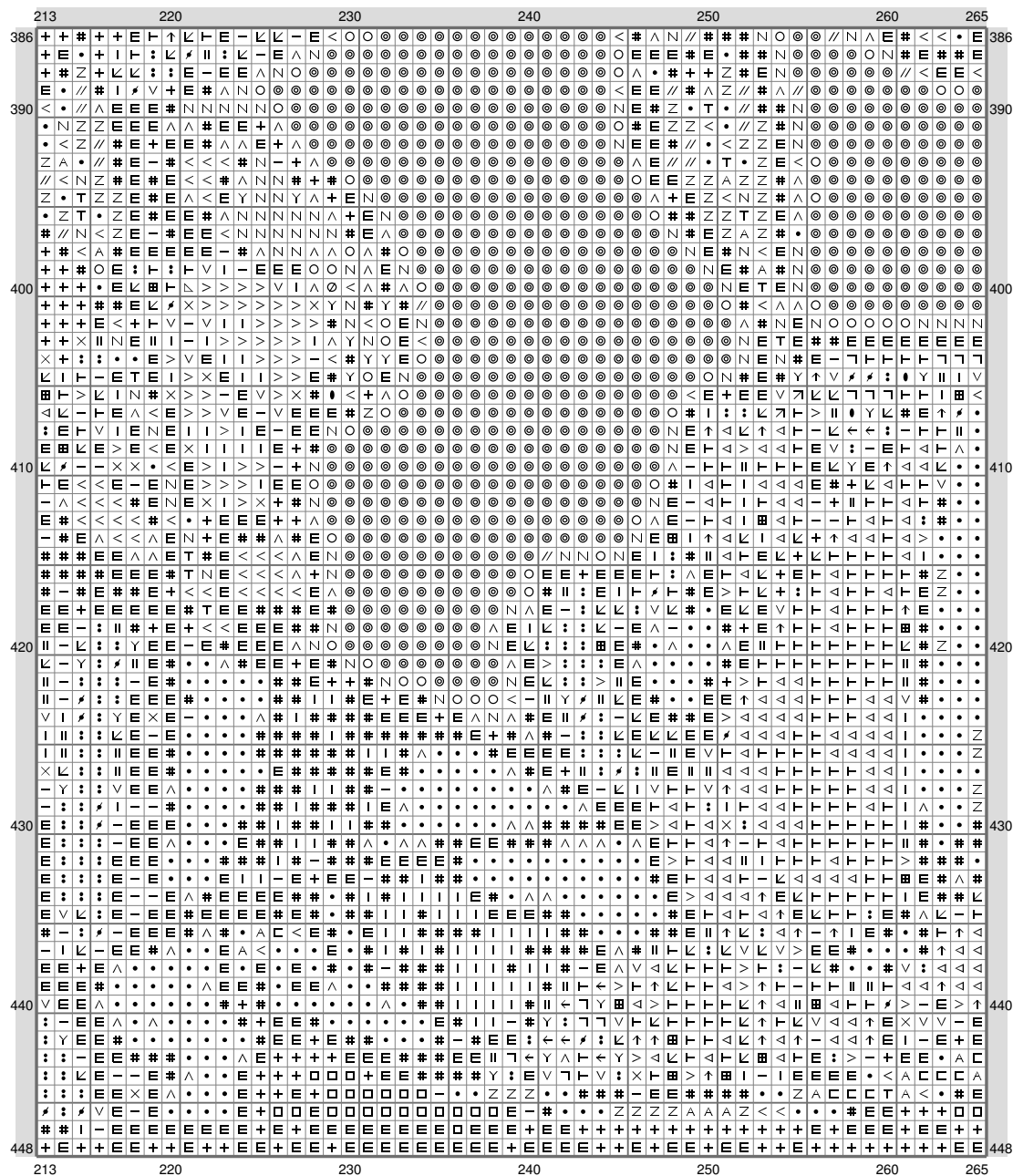
Untitled



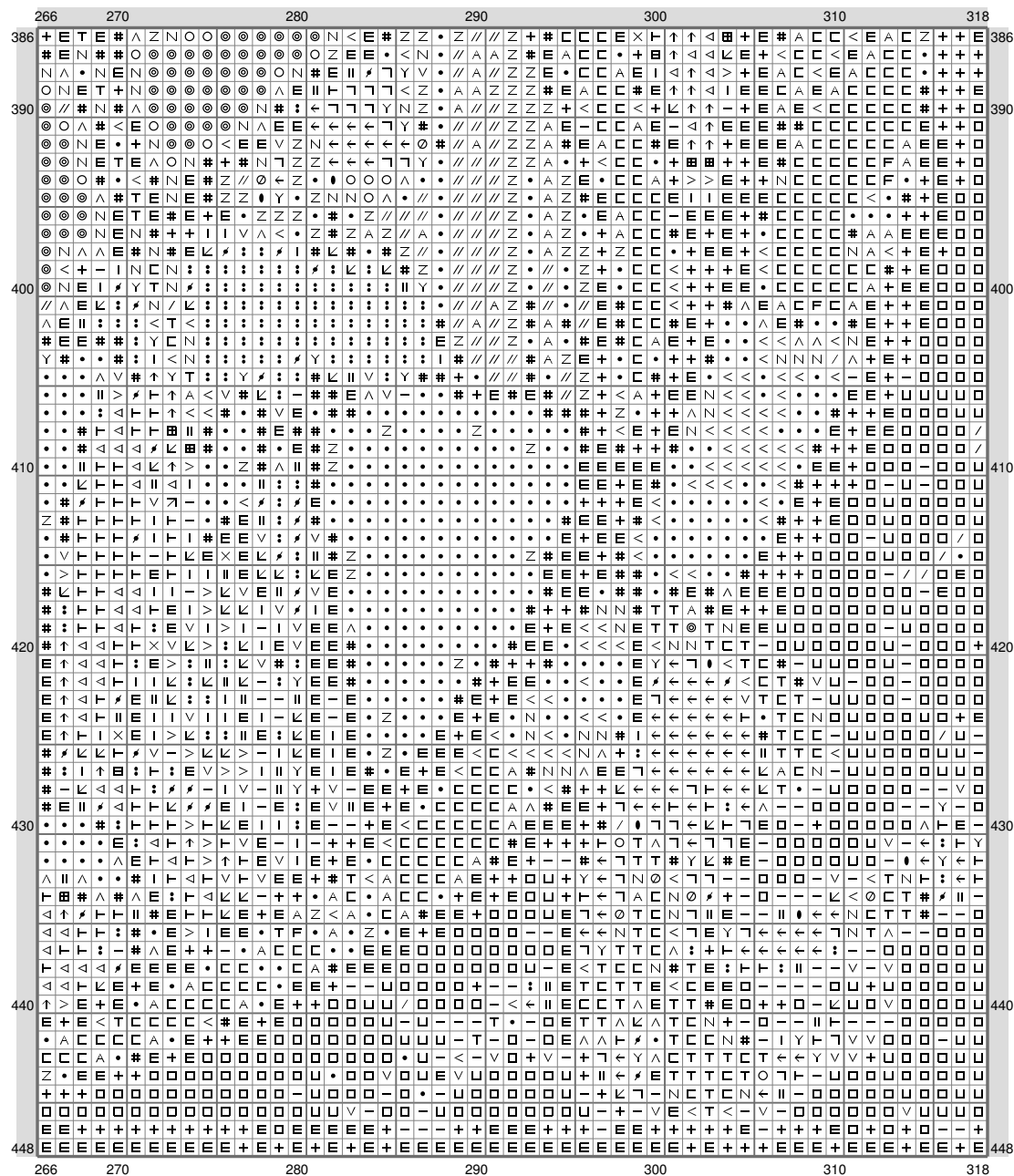
Untitled



Untitled

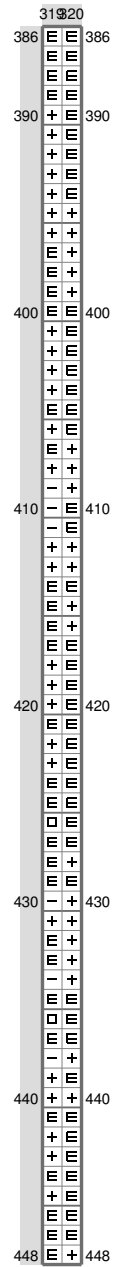


Untitled



(This chart is printed using KG-Chart LE for Cross Stitch.)

Untitled



(This chart is printed using KG-Chart LE for Cross Stitch.)

Untitled

Stitch Count: 320w x 448h
 Finished Size: 45.15 cm x 63.21 cm (18 ct./inch)
 Cloth: Aida
 Cloth's Color: White
 # of colors: 53 Colors

Color Table (DMC)

Cross Stitch

	310	(8464 ct)		793	(2166 ct)
	939	(19269 ct)		996	(601 ct)
	890	(5261 ct)		3846	(1487 ct)
	934	(4392 ct)		3790	(2342 ct)
	500	(5424 ct)		3052	(634 ct)
	699	(2592 ct)		640	(1928 ct)
	3021	(3653 ct)		522	(841 ct)
	3371	(3094 ct)		3862	(2158 ct)
	829	(2298 ct)		351	(1231 ct)
	935	(1469 ct)		422	(1557 ct)
	898	(765 ct)		472	(1389 ct)
	3362	(1306 ct)		926	(5592 ct)
	869	(1925 ct)		3022	(5858 ct)
	988	(1344 ct)		794	(3183 ct)
	580	(1117 ct)		3839	(1272 ct)
	918	(1030 ct)		524	(2352 ct)
	434	(1903 ct)		3747	(2121 ct)
	347	(574 ct)		453	(771 ct)
	782	(1815 ct)			
	3852	(2923 ct)			
	972	(940 ct)			
	680	(1728 ct)			
	3750	(2139 ct)			
	311	(1261 ct)			
	3808	(1116 ct)			
	505	(1154 ct)			
	3799	(5665 ct)			
	413	(6182 ct)			
	930	(3967 ct)			
	645	(3121 ct)			
	3842	(1307 ct)			
	3810	(1111 ct)			
	3768	(2417 ct)			
	502	(1146 ct)			
	3760	(2005 ct)			