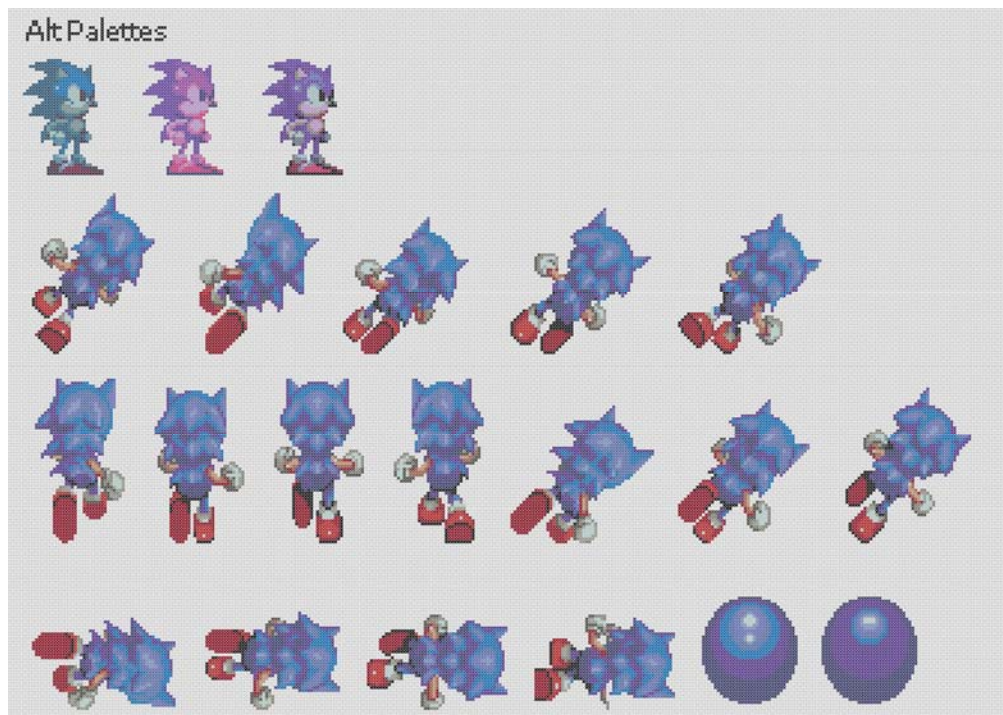
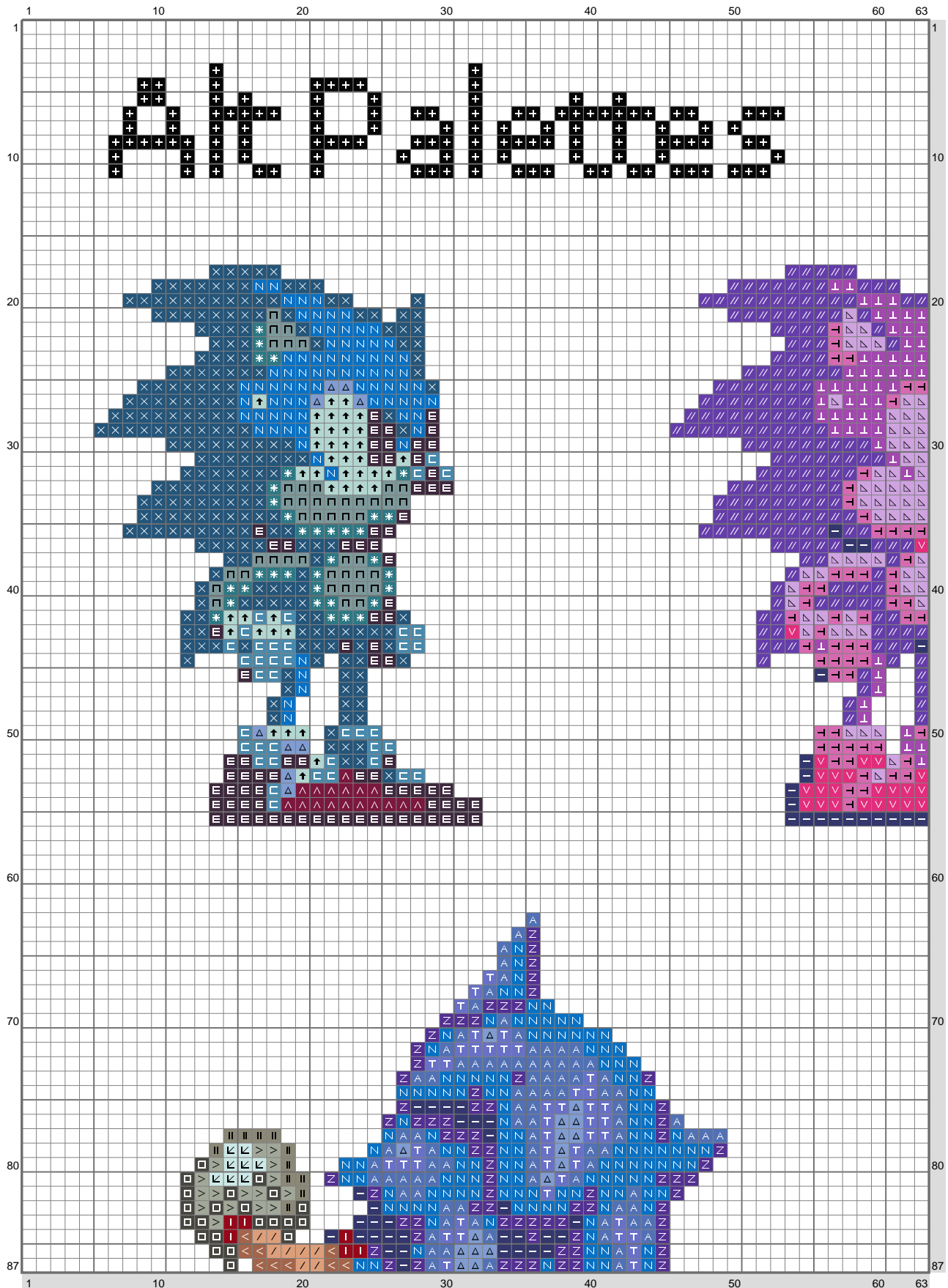


Sonic 2 - 6

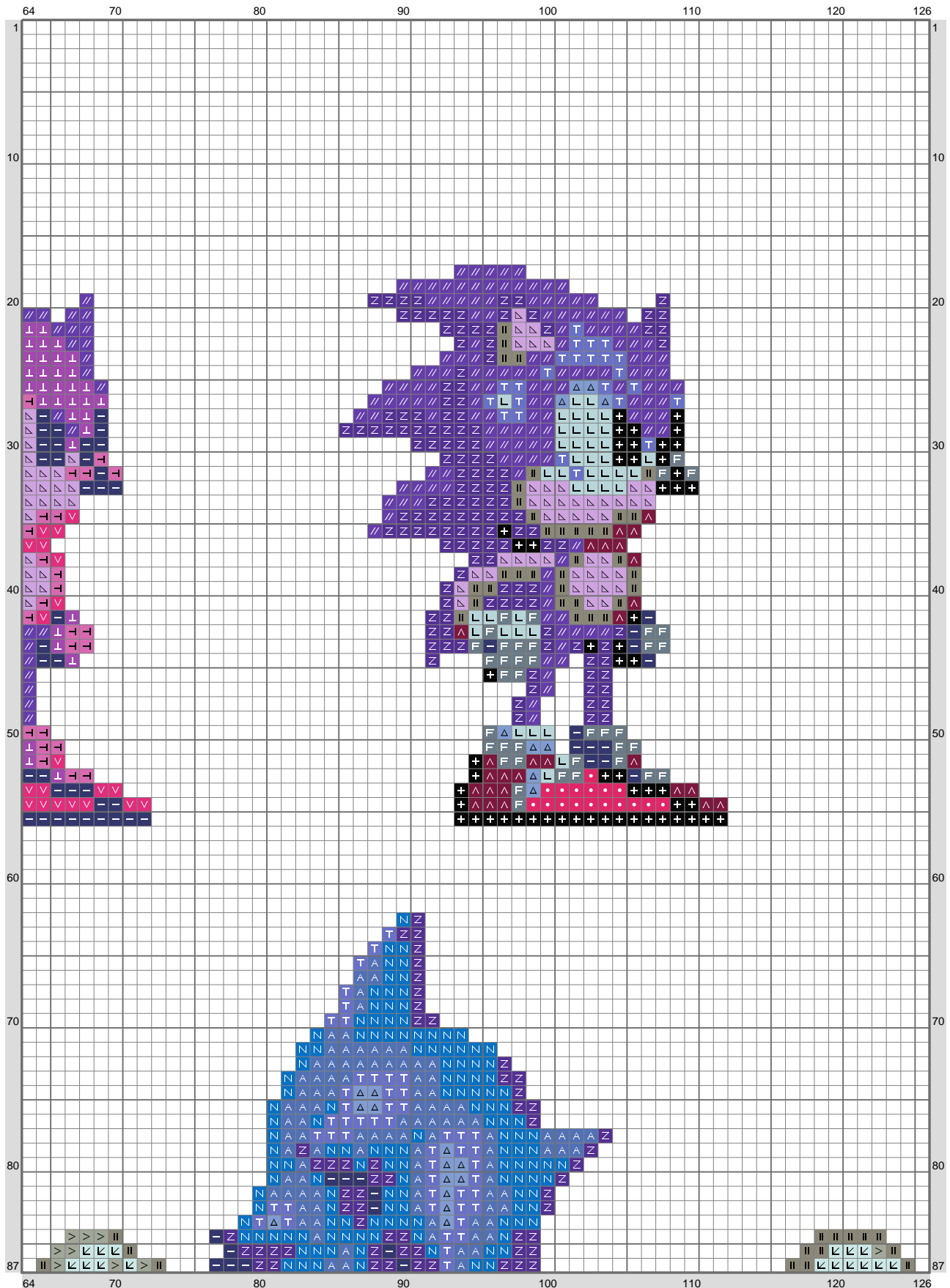


Sonic 2 - 6



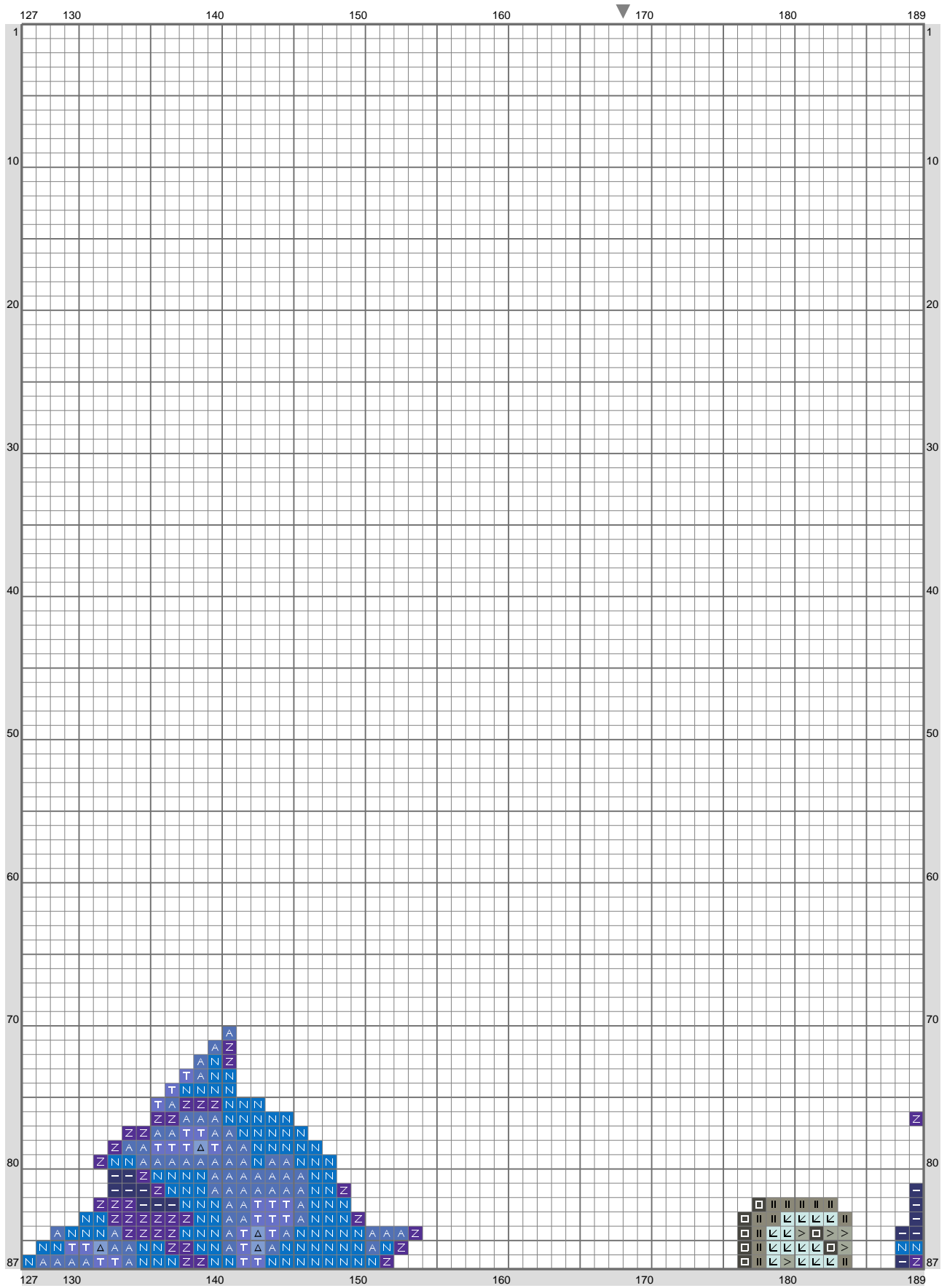
(This chart is printed using KG-Chart LE for Cross Stitch.)

Sonic 2 - 6



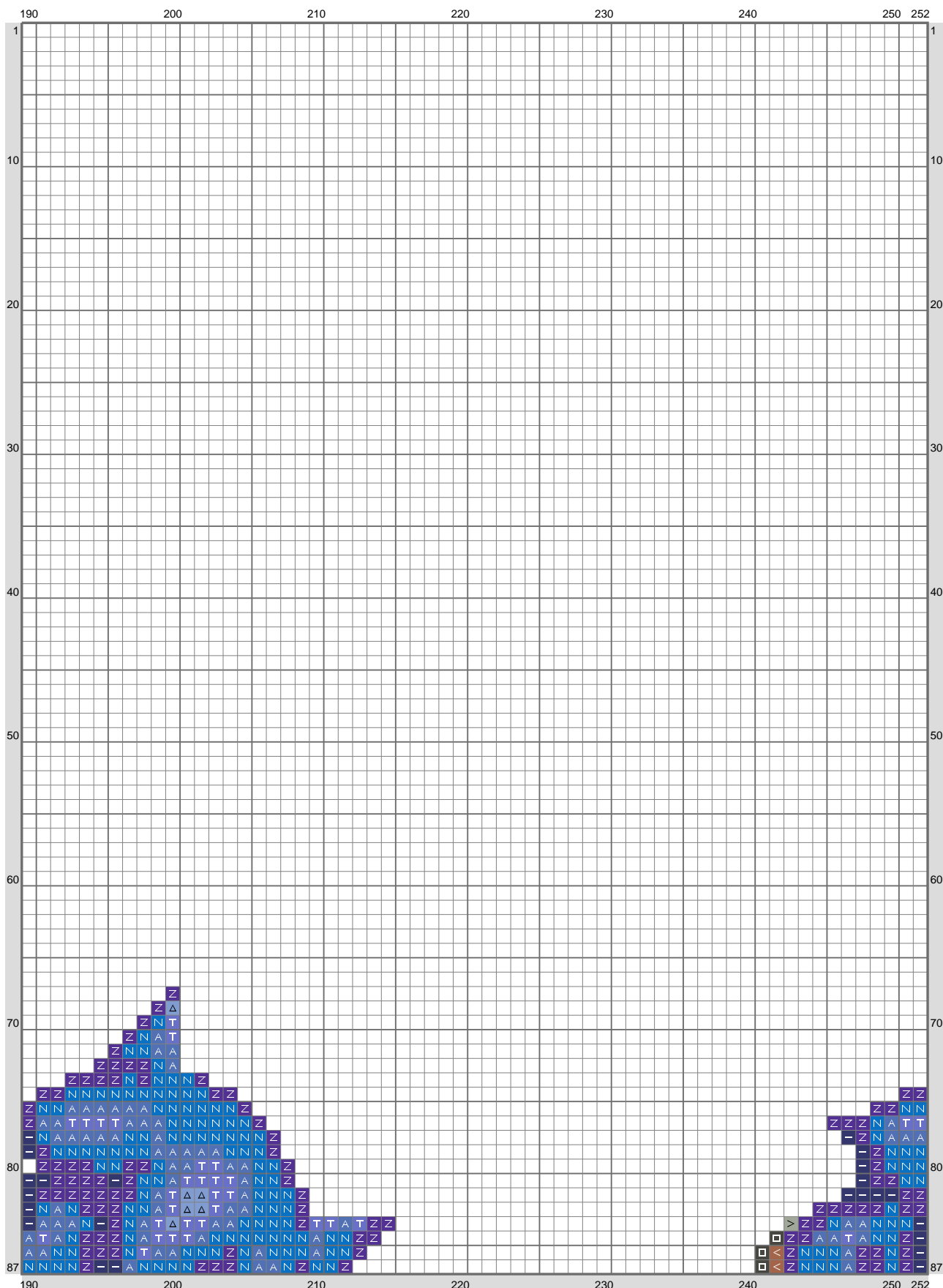
(This chart is printed using KG-Chart LE for Cross Stitch.)

Sonic 2 - 6



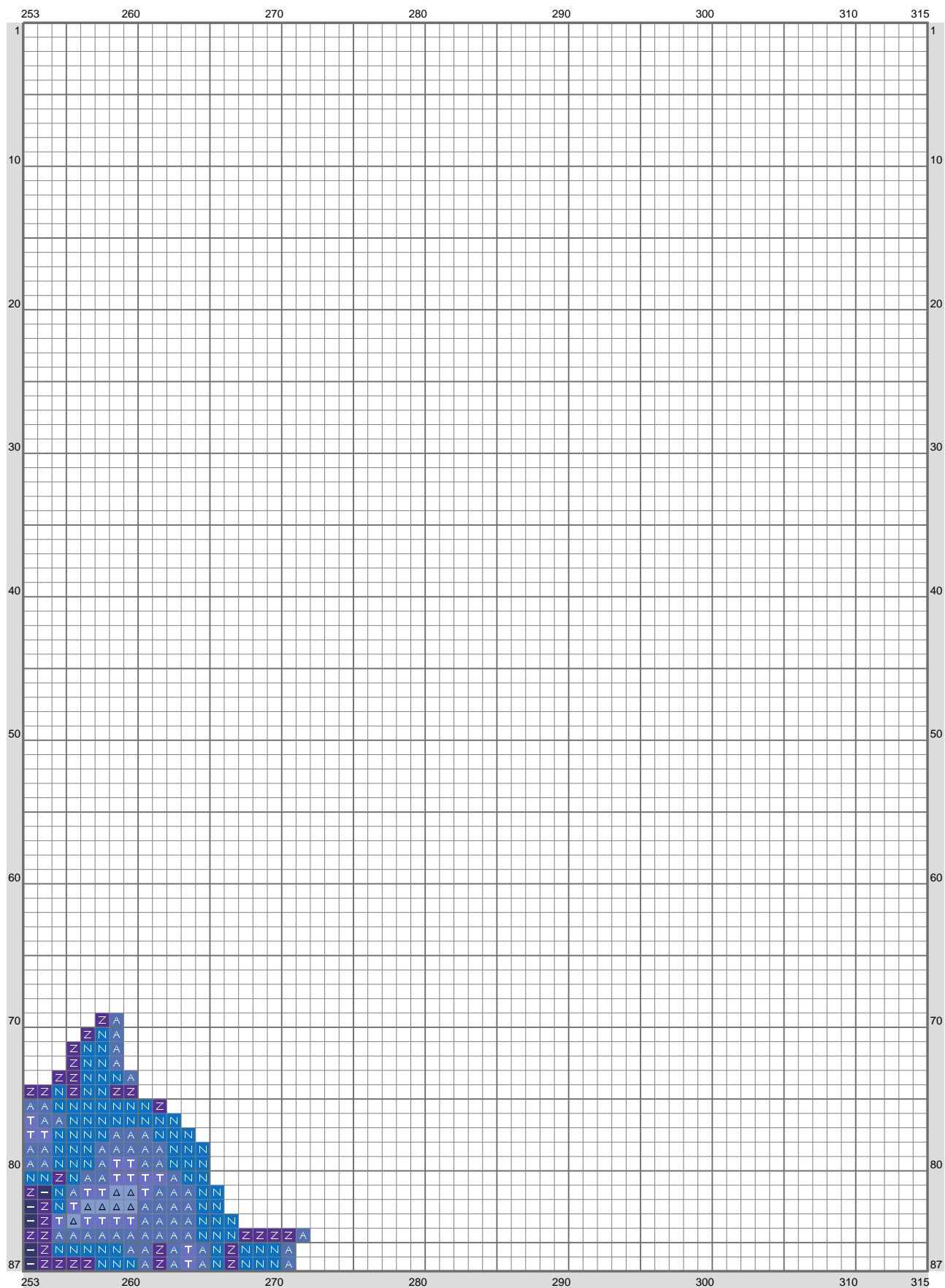
(This chart is printed using KG-Chart LE for Cross Stitch.)

Sonic 2 - 6



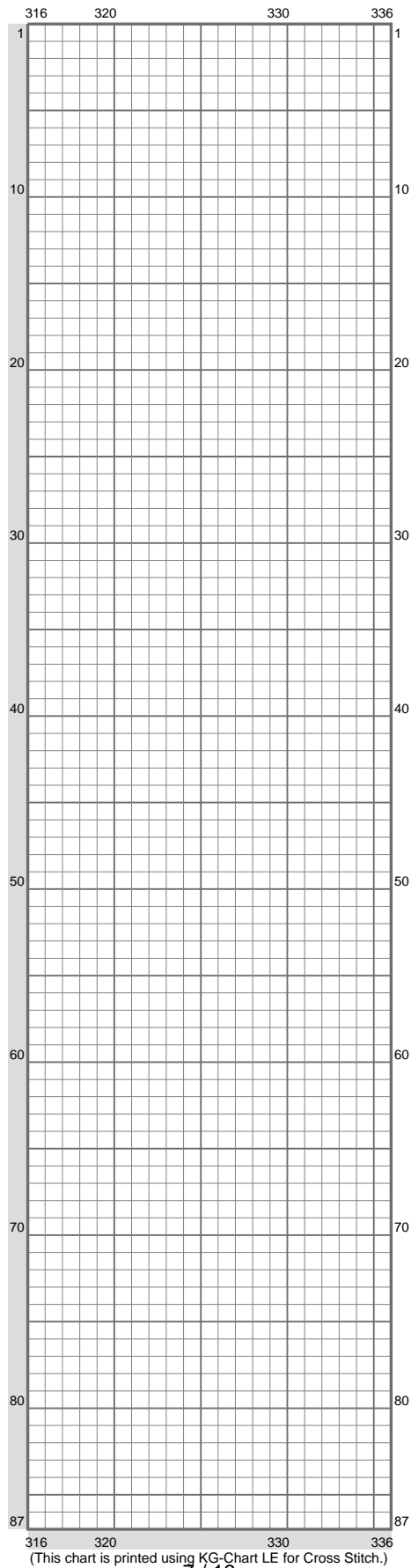
(This chart is printed using KG-Chart LE for Cross Stitch.)

Sonic 2 - 6



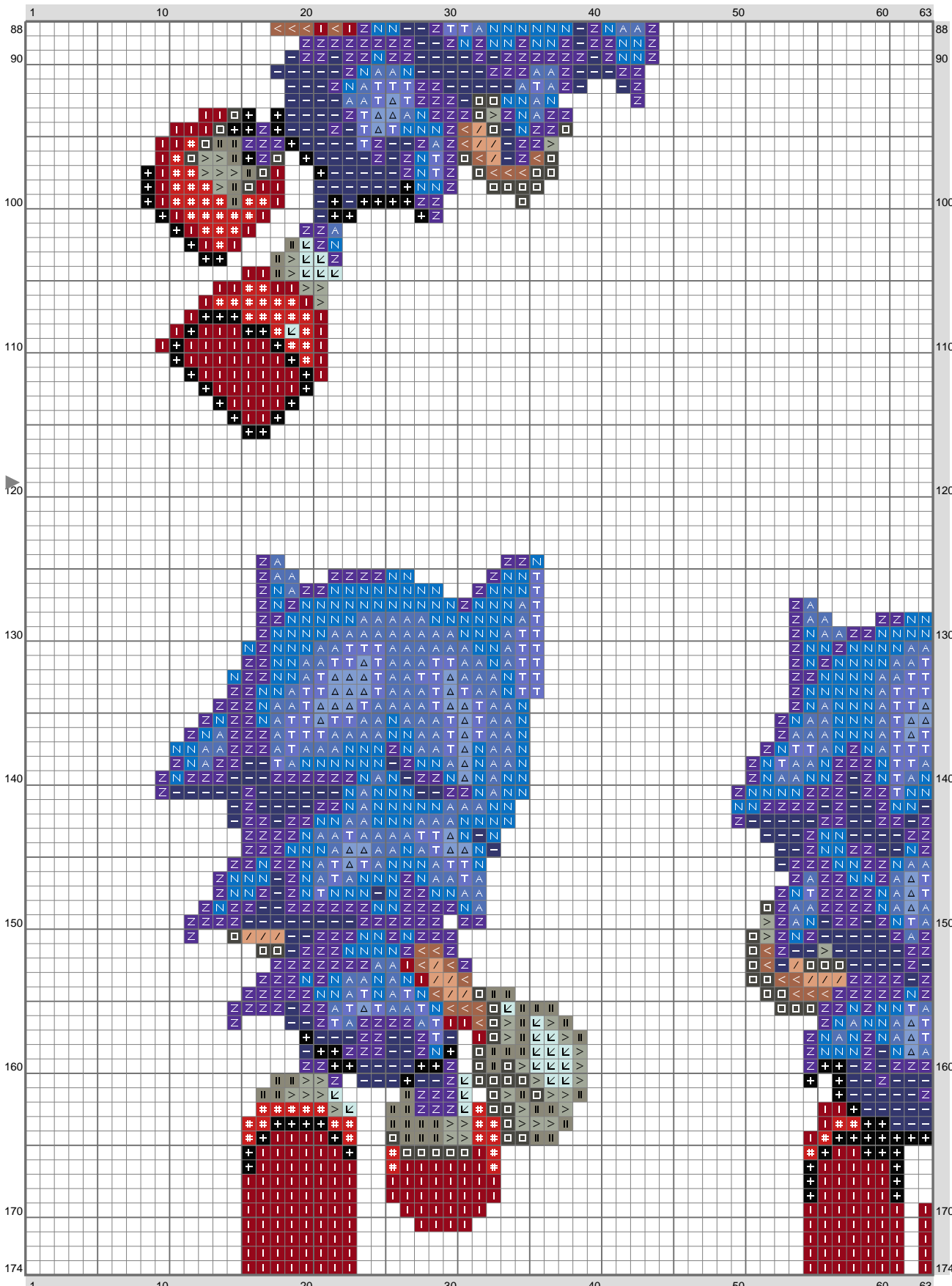
(This chart is printed using K&G-Chart LE for Cross Stitch.)

Sonic 2 - 6



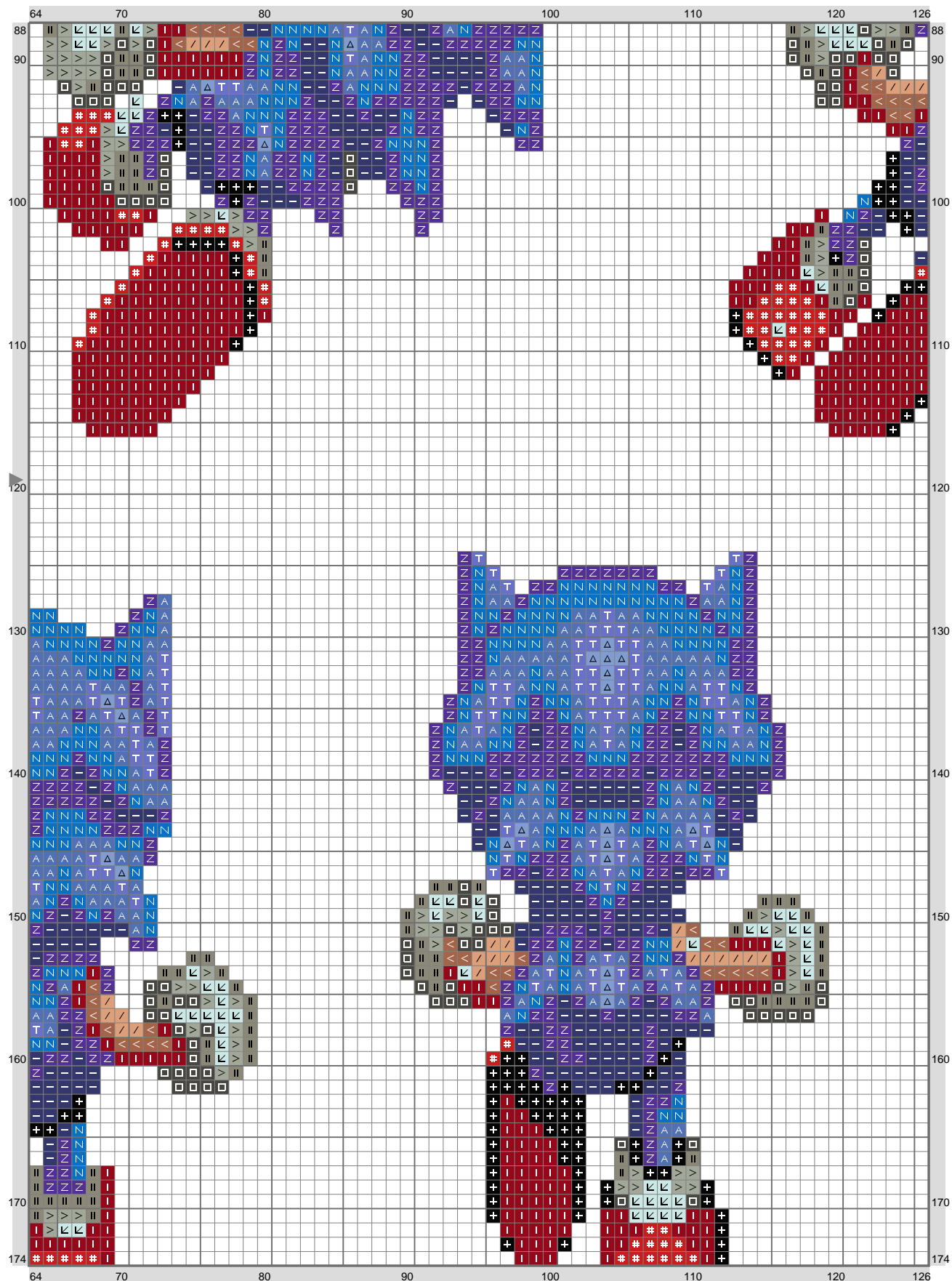
(This chart is printed using KG-Chart LE for Cross Stitch.)

Sonic 2 - 6



(This chart is printed using K&G-Chart LE for Cross Stitch.)

Sonic 2 - 6

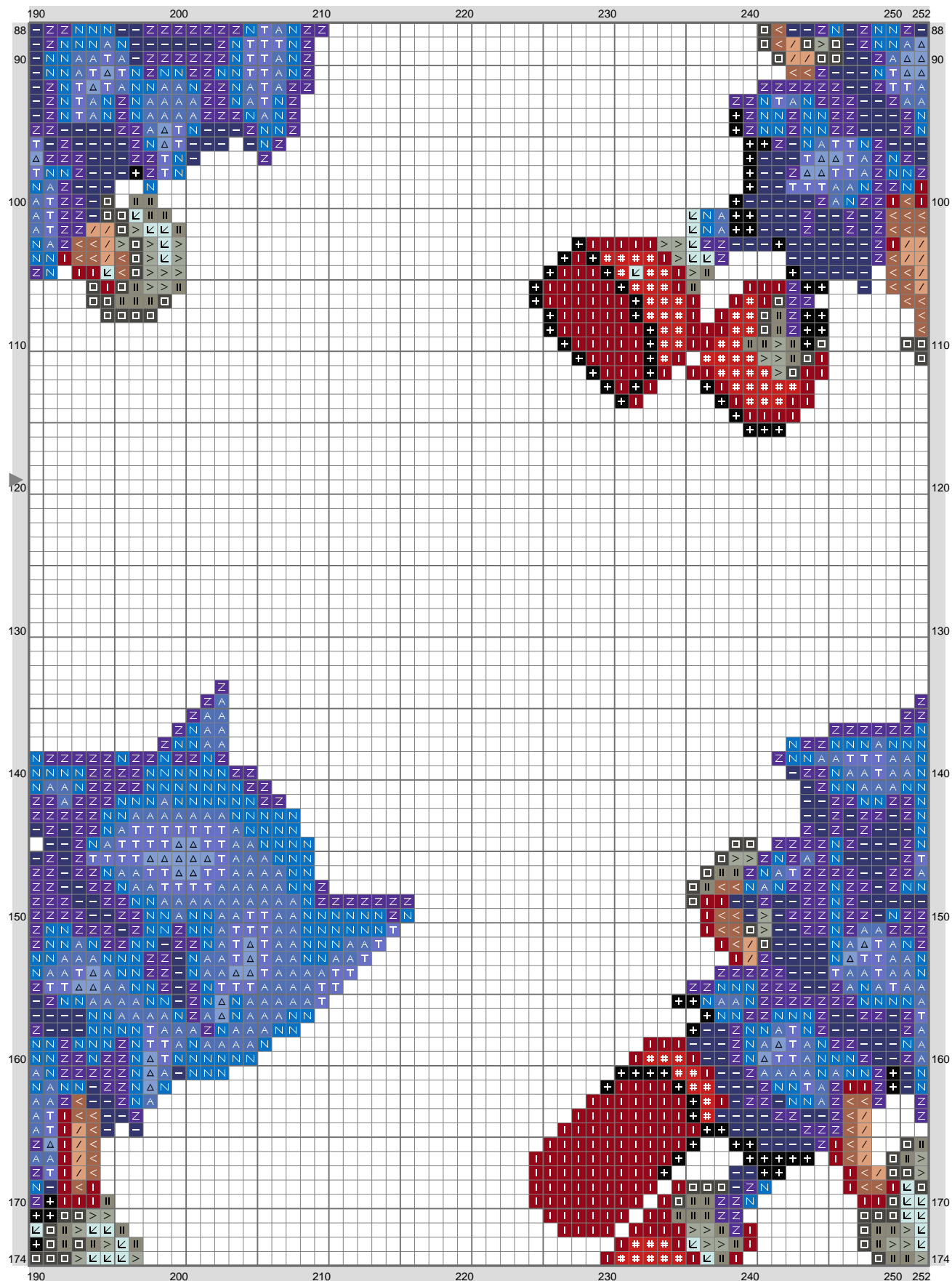


Sonic 2 - 6



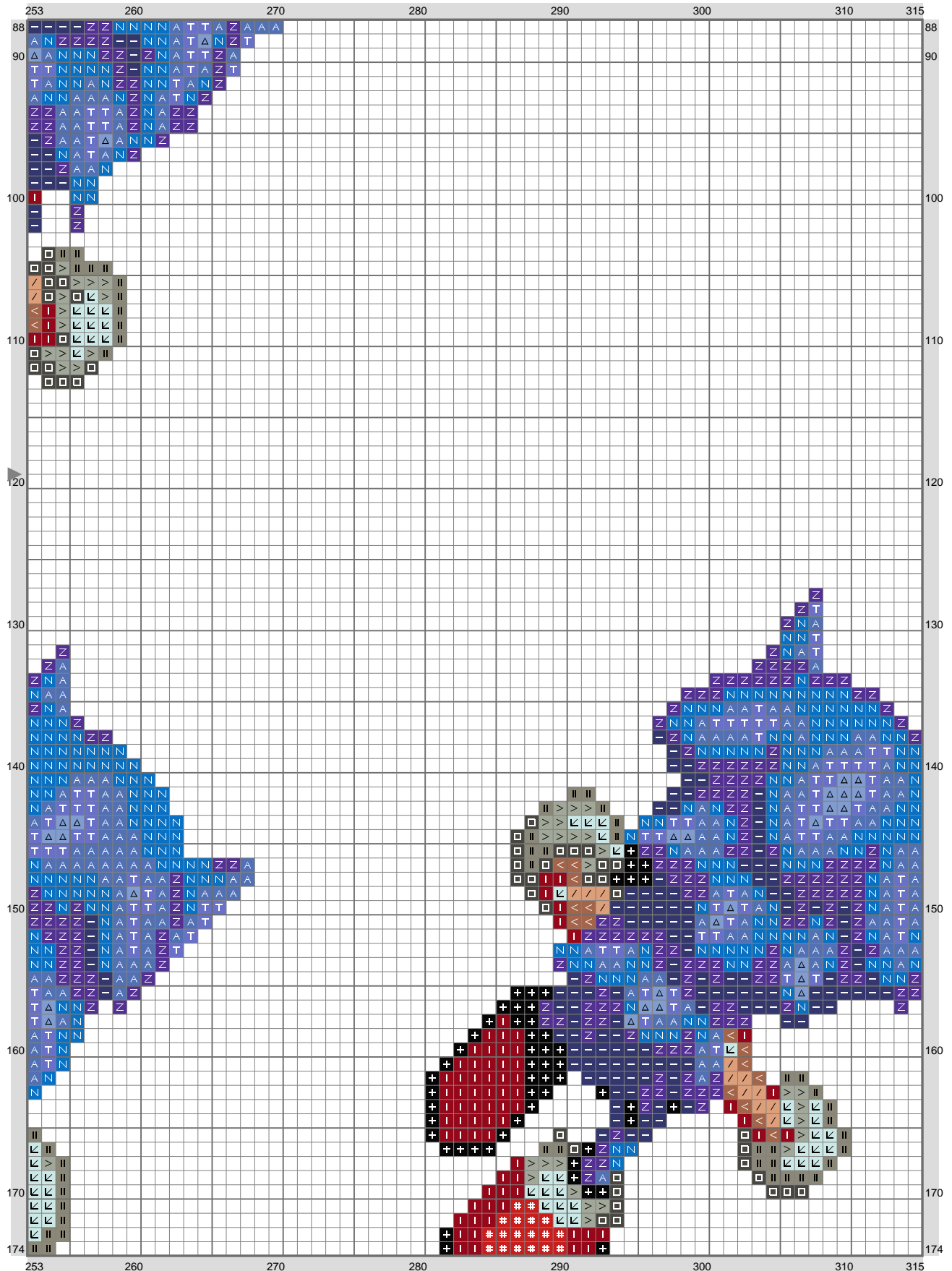
(This chart is printed using KG-Chart LE for Cross Stitch.)

Sonic 2 - 6



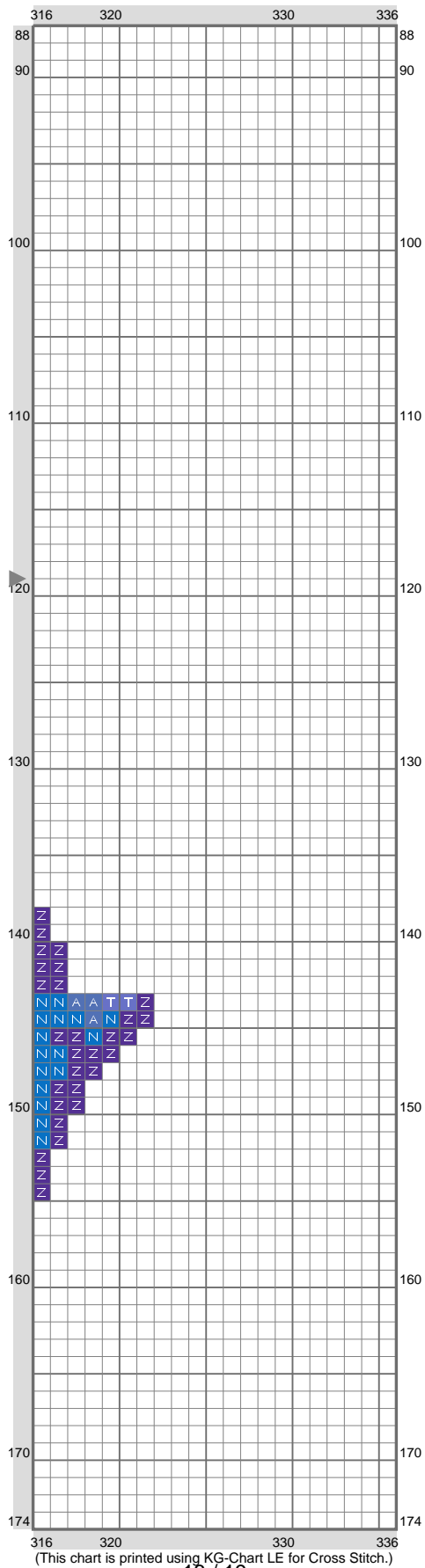
(This chart is printed using KG-Chart LE for Cross Stitch.)

Sonic 2 - 6

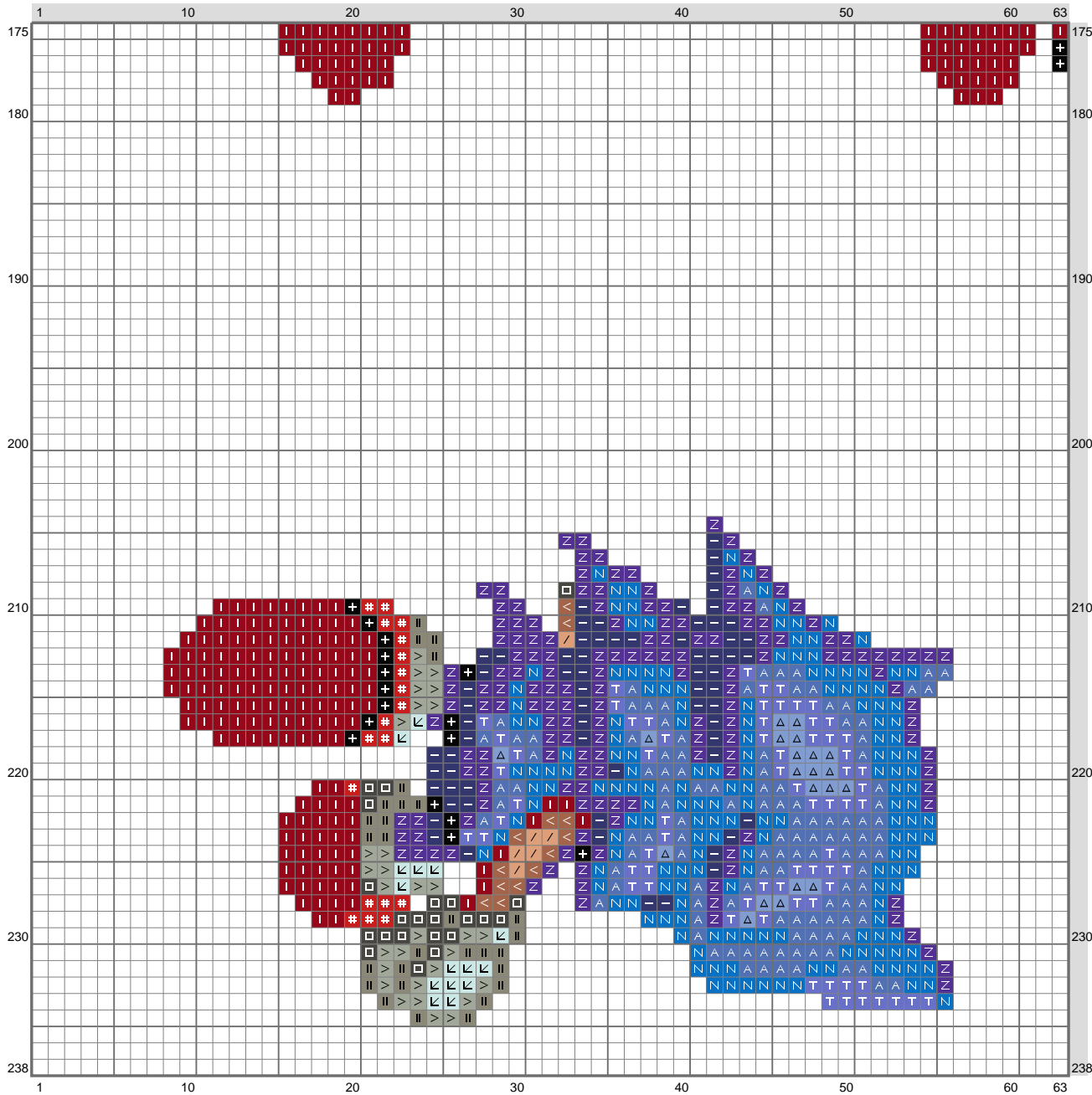


(This chart is printed using KG-Chart LE for Cross Stitch.)

Sonic 2 - 6

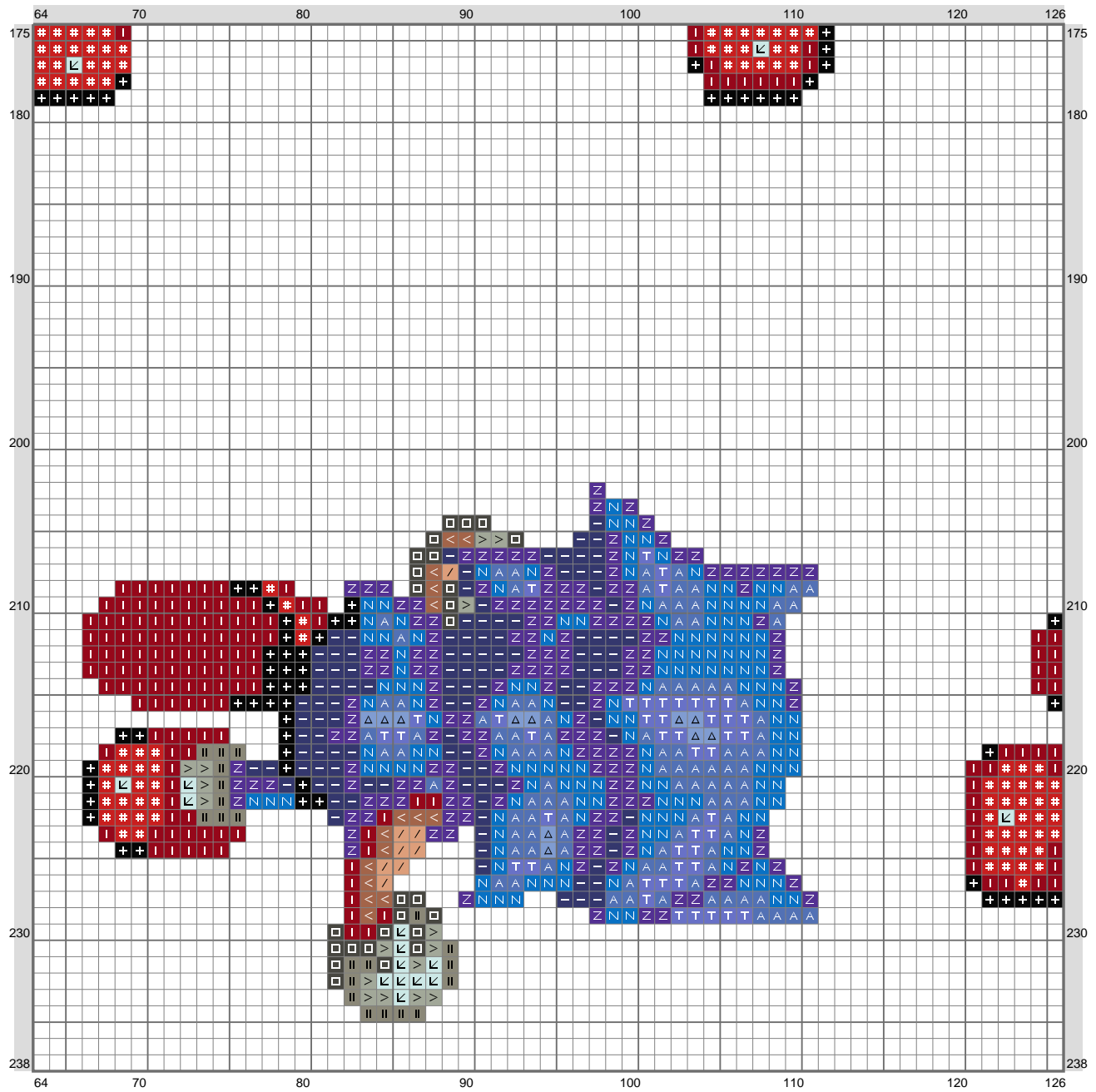


Sonic 2 - 6



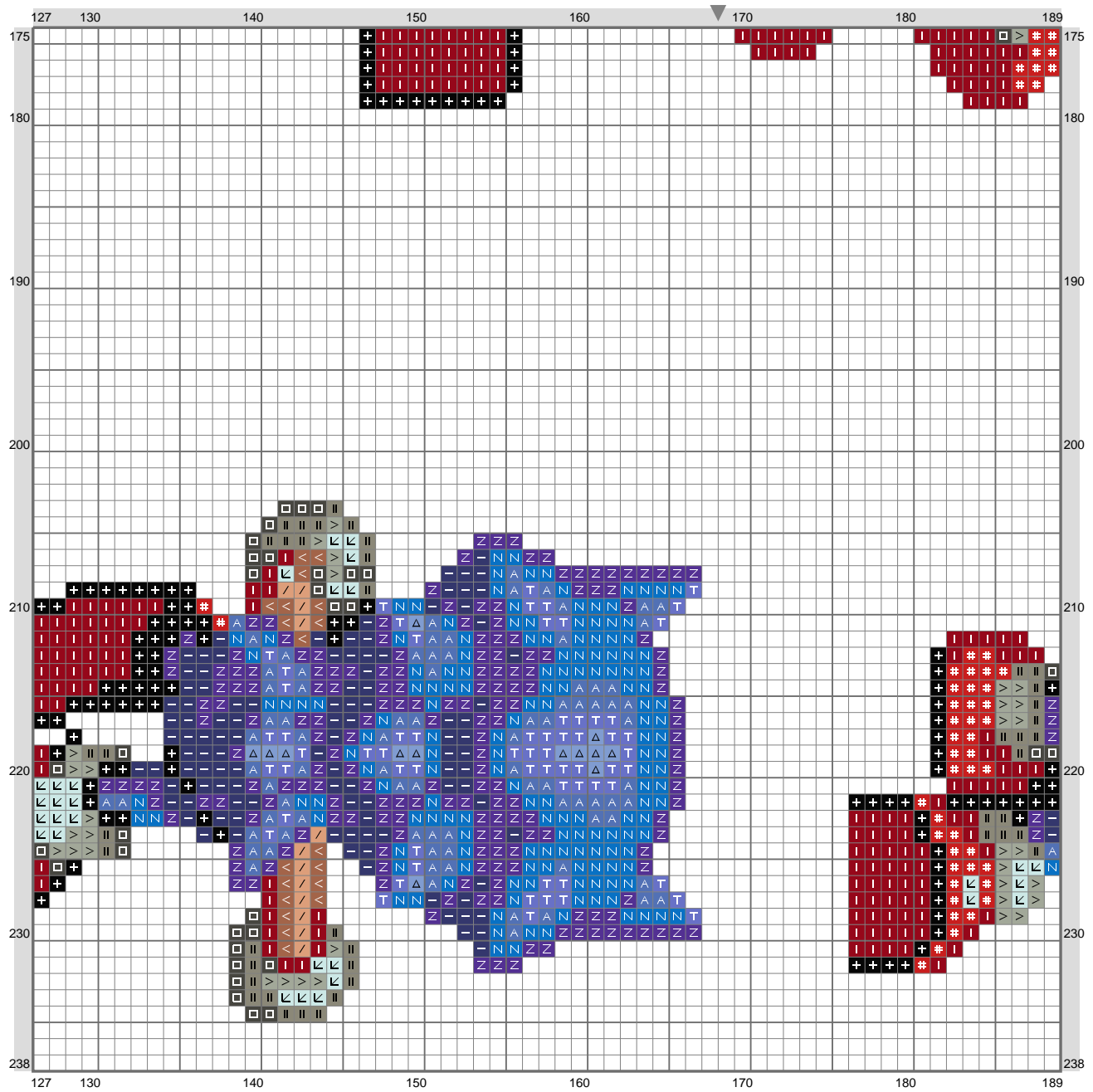
(This chart is printed using KG-Chart LE for Cross Stitch.)

Sonic 2 - 6



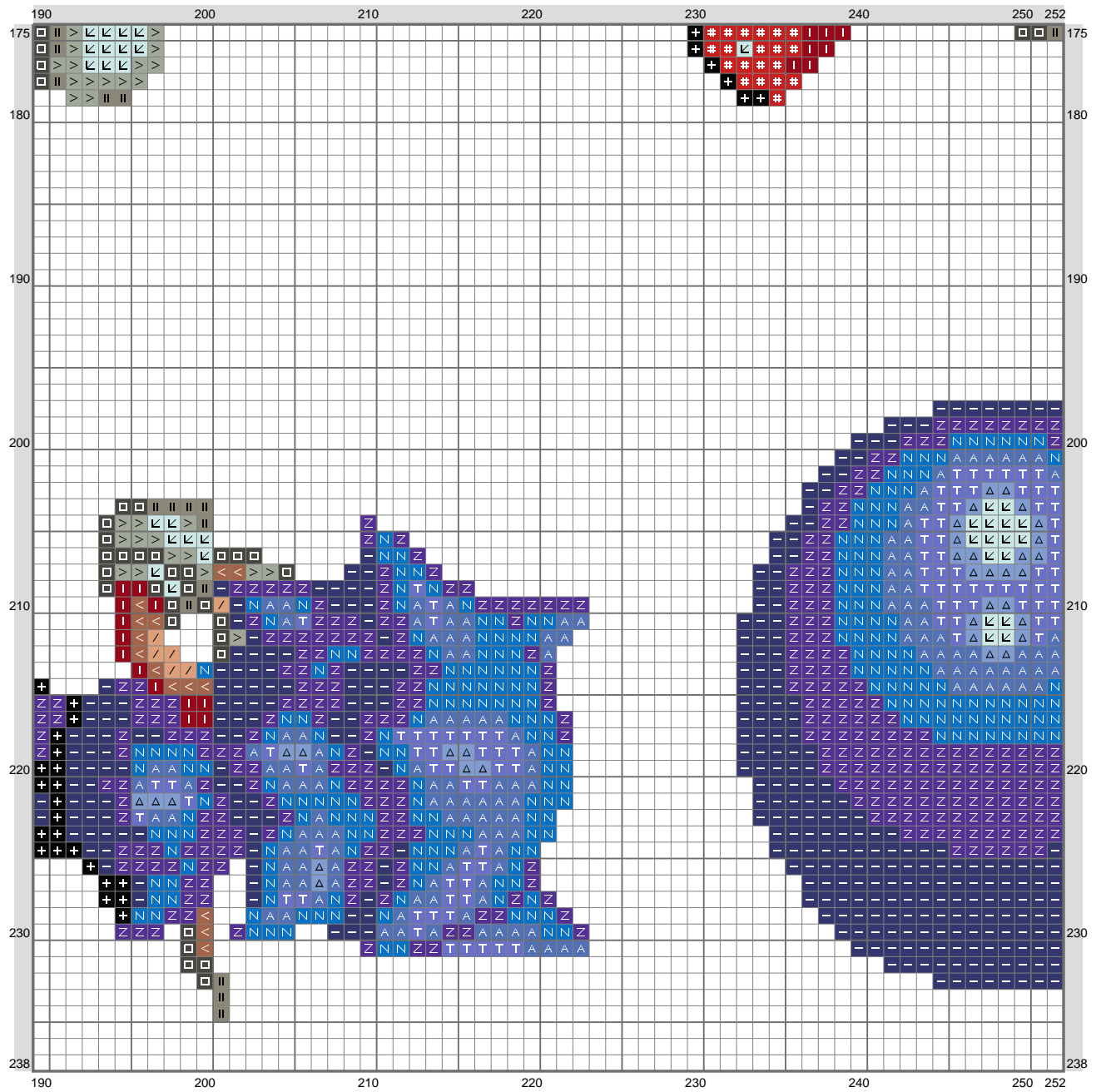
(This chart is printed using KG-Chart LE for Cross Stitch.)

Sonic 2 - 6



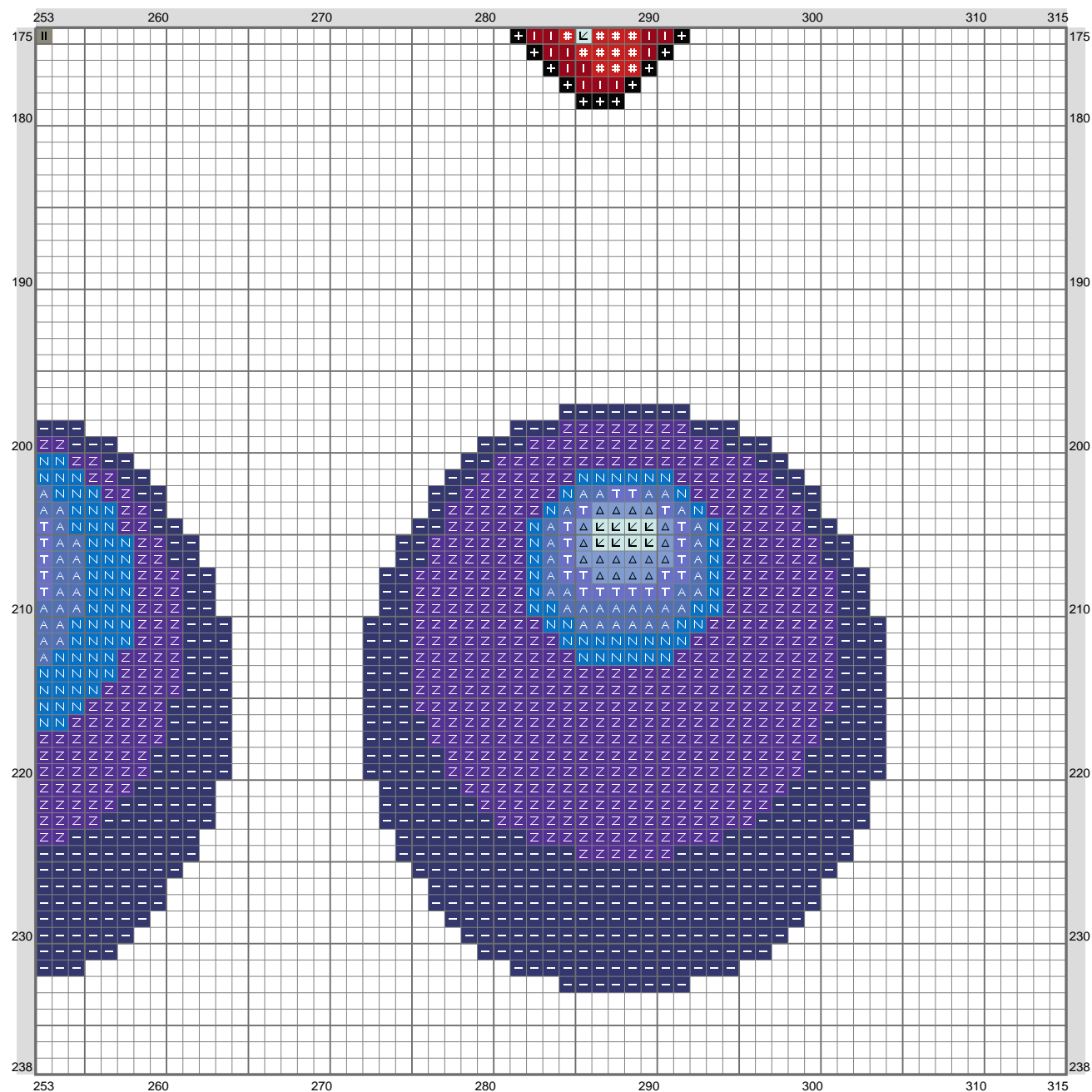
(This chart is printed using KG-Chart LE for Cross Stitch.)

Sonic 2 - 6



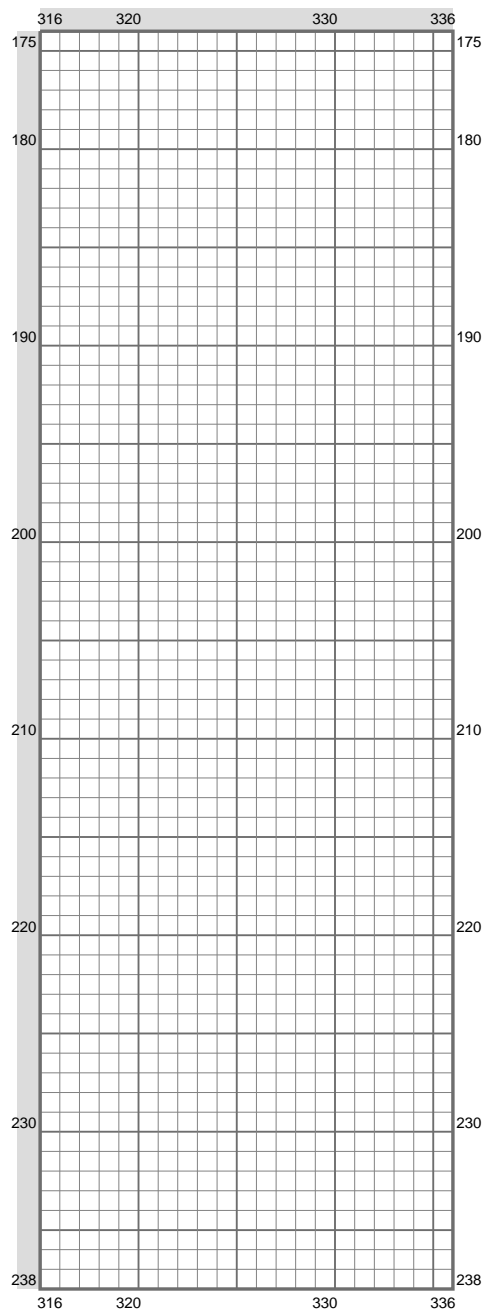
(This chart is printed using KG-Chart LE for Cross Stitch.)

Sonic 2 - 6



(This chart is printed using KG-Chart LE for Cross Stitch.)

Sonic 2 - 6



(This chart is printed using KG-Chart LE for Cross Stitch.)

Stitch Count: 336w x 238h

Finished Size: 47.41 cm x 33.58 cm (18 ct./inch)

Cloth: Aida

Cloth's Color: White

of colors: 30 Colors

Color Table (DMC)

Cross Stitch

+	310	(884 ct)
≡	823	(82 ct)
□	3021	(492 ct)
—	311	(2412 ct)
×	3842	(240 ct)
*	3809	(35 ct)
I	498	(1747 ct)
#	817	(500 ct)
•	601	(17 ct)
∇	3804	(44 ct)
^	915	(44 ct)
	640	(446 ct)
<	434	(243 ct)
/	436	(134 ct)
∇	796	(3598 ct)
N	3843	(2954 ct)
//	797	(376 ct)
A	825	(1902 ct)
□	3760	(39 ct)
F	3768	(39 ct)
T	798	(999 ct)
⊥	3837	(91 ct)
⊥	3607	(83 ct)
□	926	(45 ct)
△	826	(318 ct)
>	3022	(367 ct)
▽	210	(131 ct)
L	747	(41 ct)
↙	828	(349 ct)
↑	3811	(41 ct)