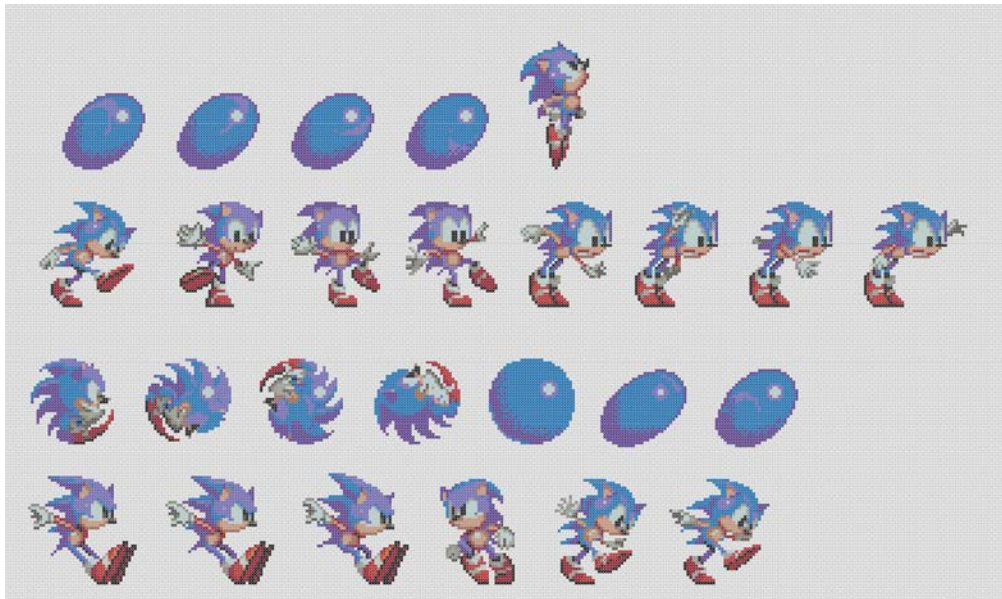


Sonic 2 - 4

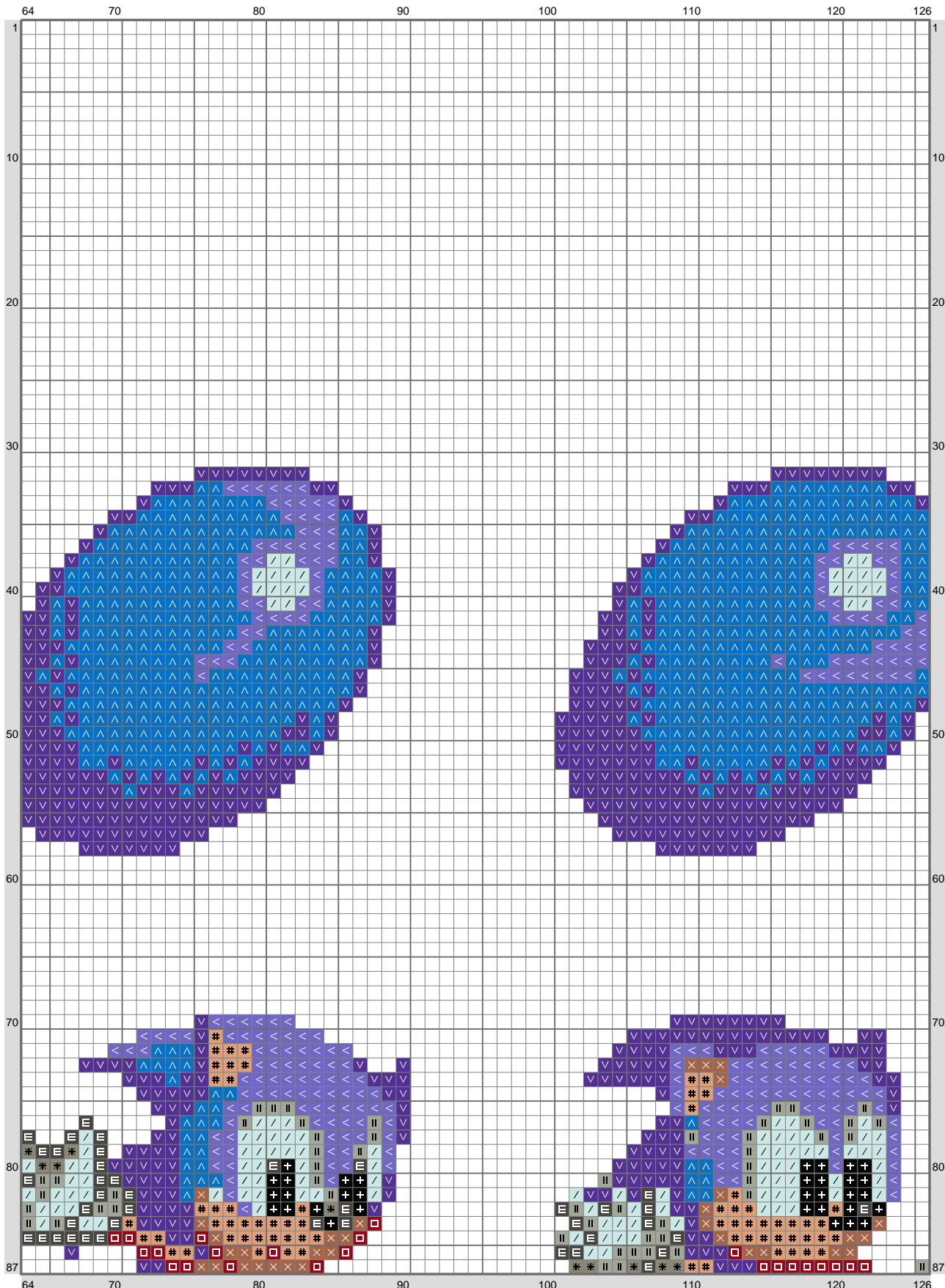


Sonic 2 - 4



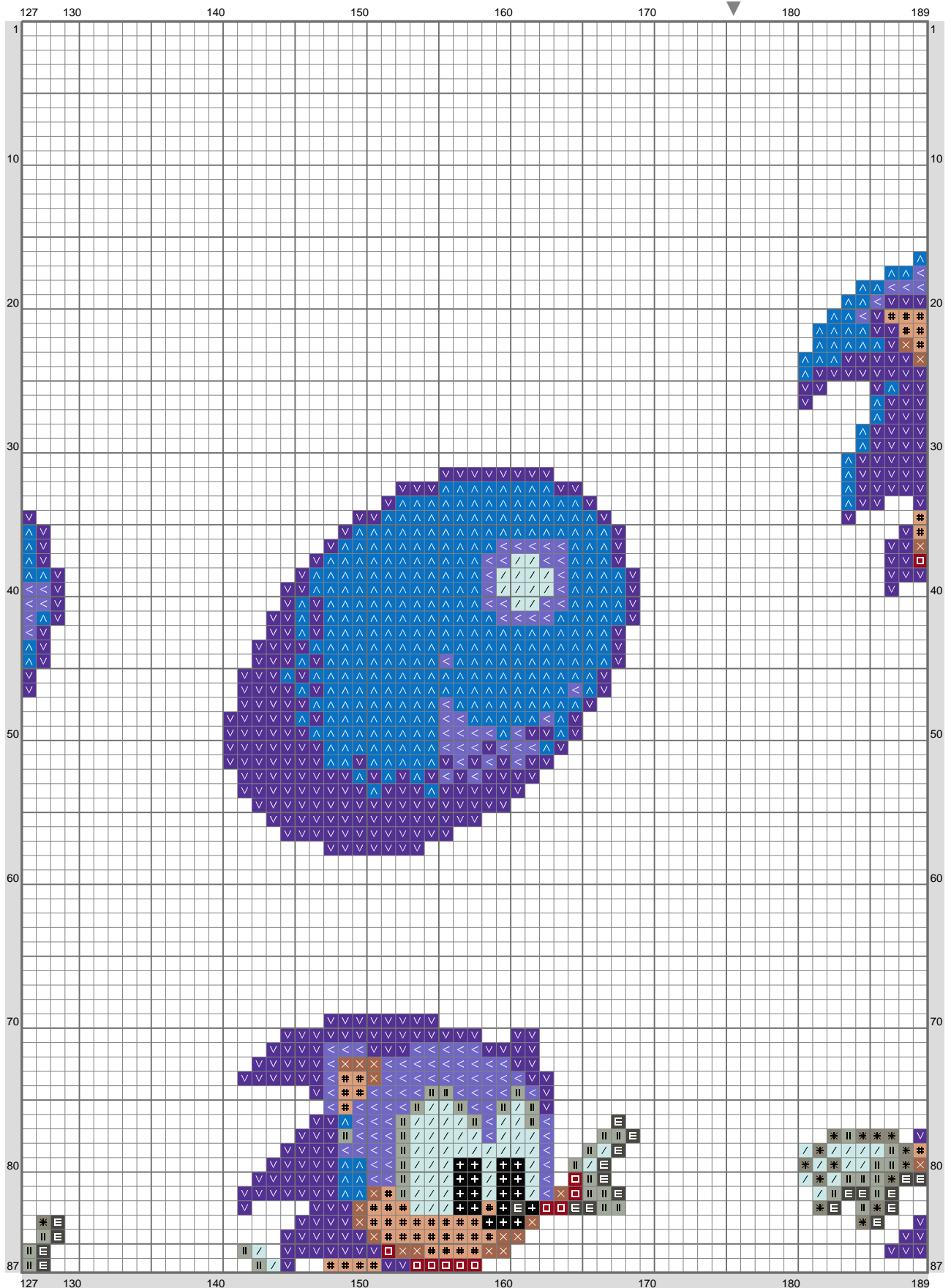
(This chart is printed using KG-Chart LE for Cross Stitch.)

Sonic 2 - 4



(This chart is printed using KG-Chart LE for Cross Stitch.)

Sonic 2 - 4



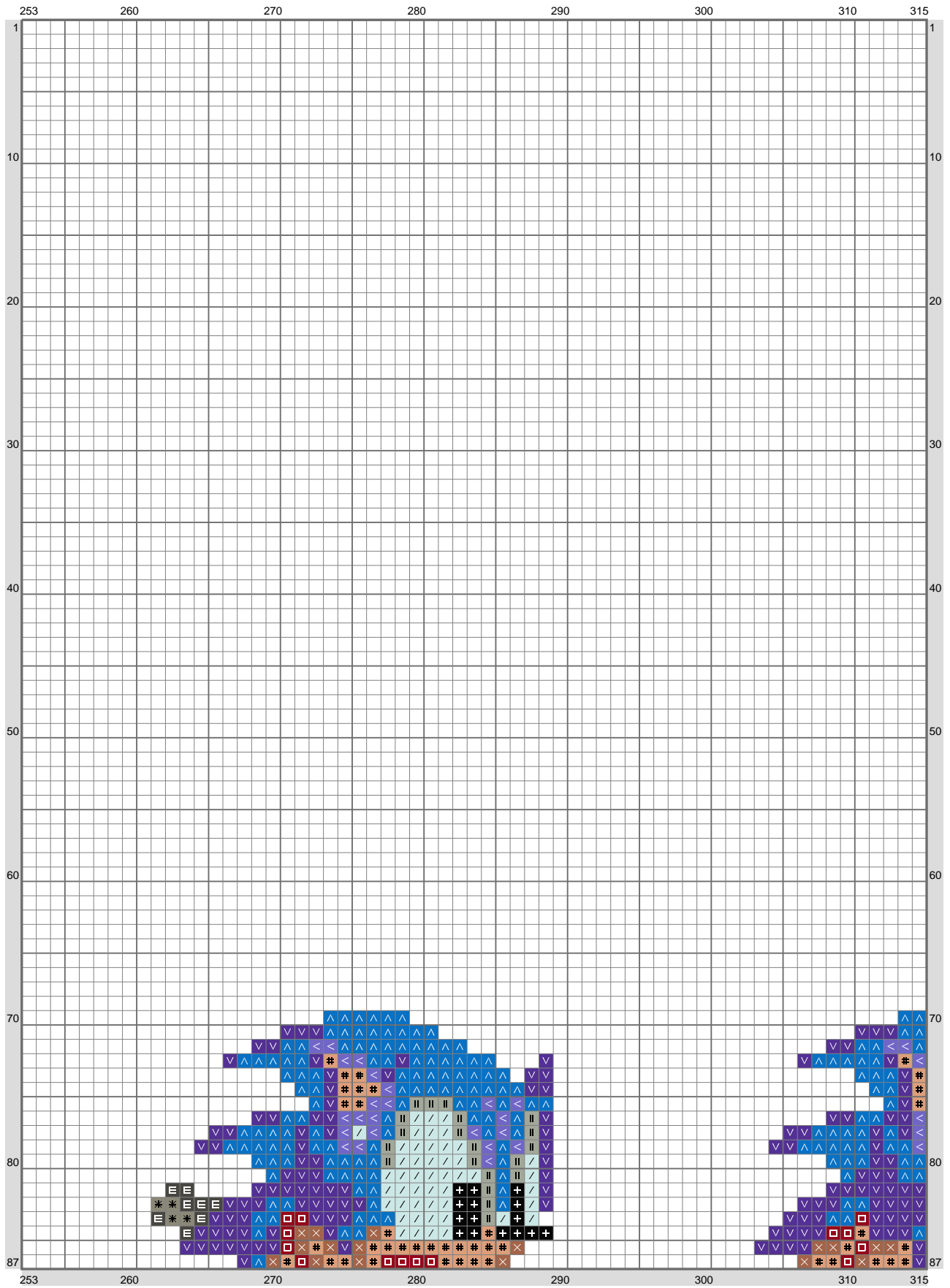
(This chart is printed using KG-Chart LE for Cross Stitch.)

Sonic 2 - 4

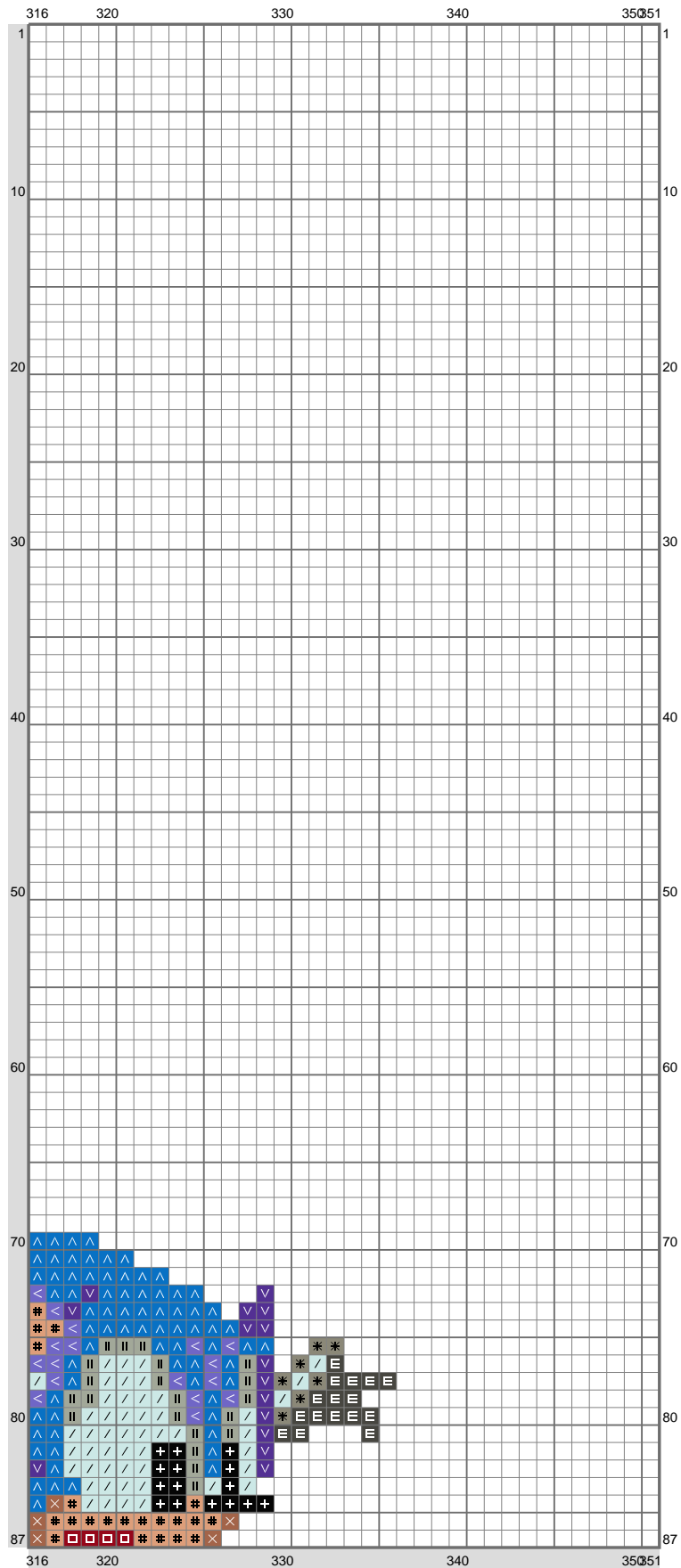


(This chart is printed using KG-Chart LE for Cross Stitch.)

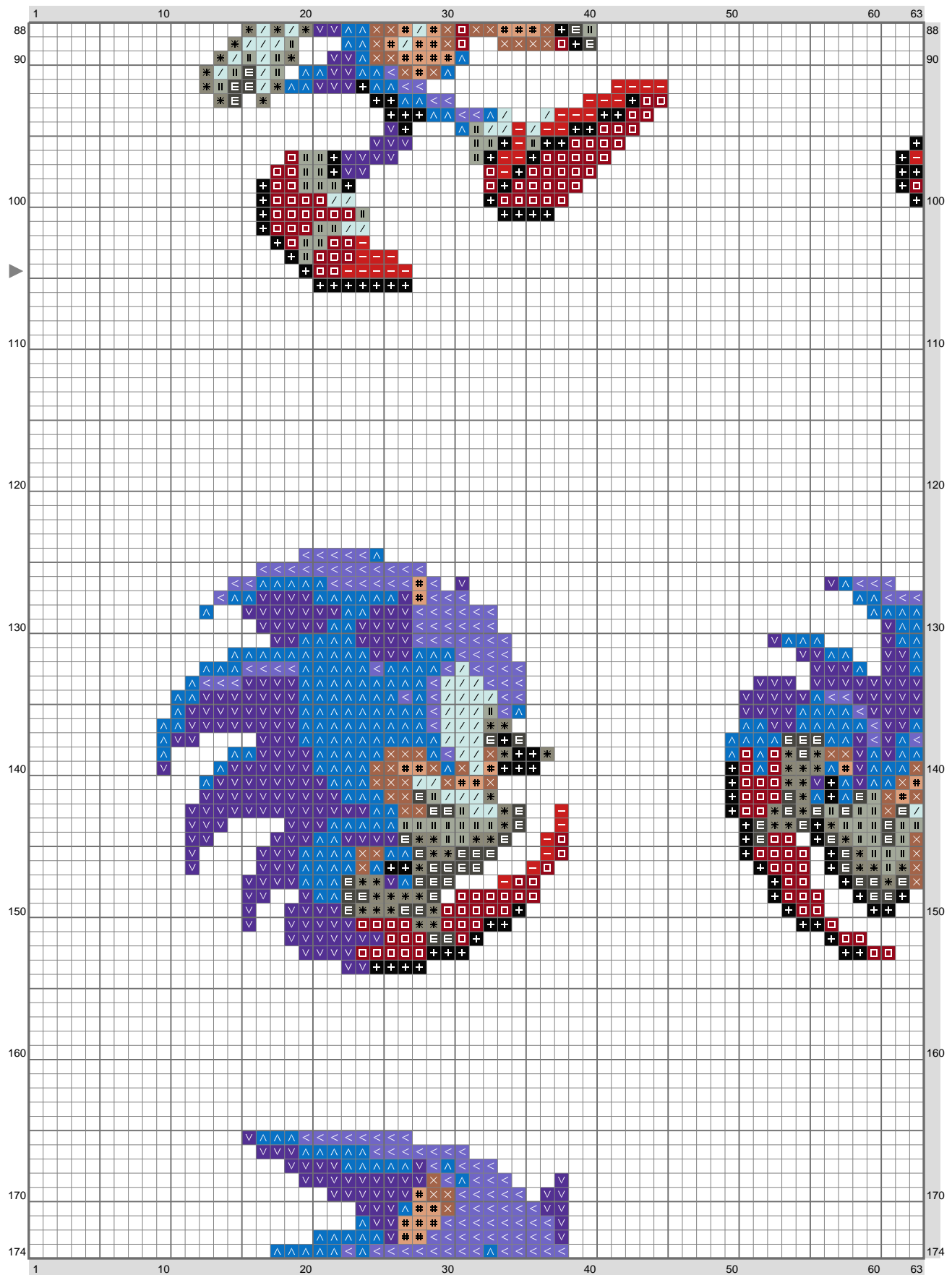
Sonic 2 - 4



Sonic 2 - 4



Sonic 2 - 4



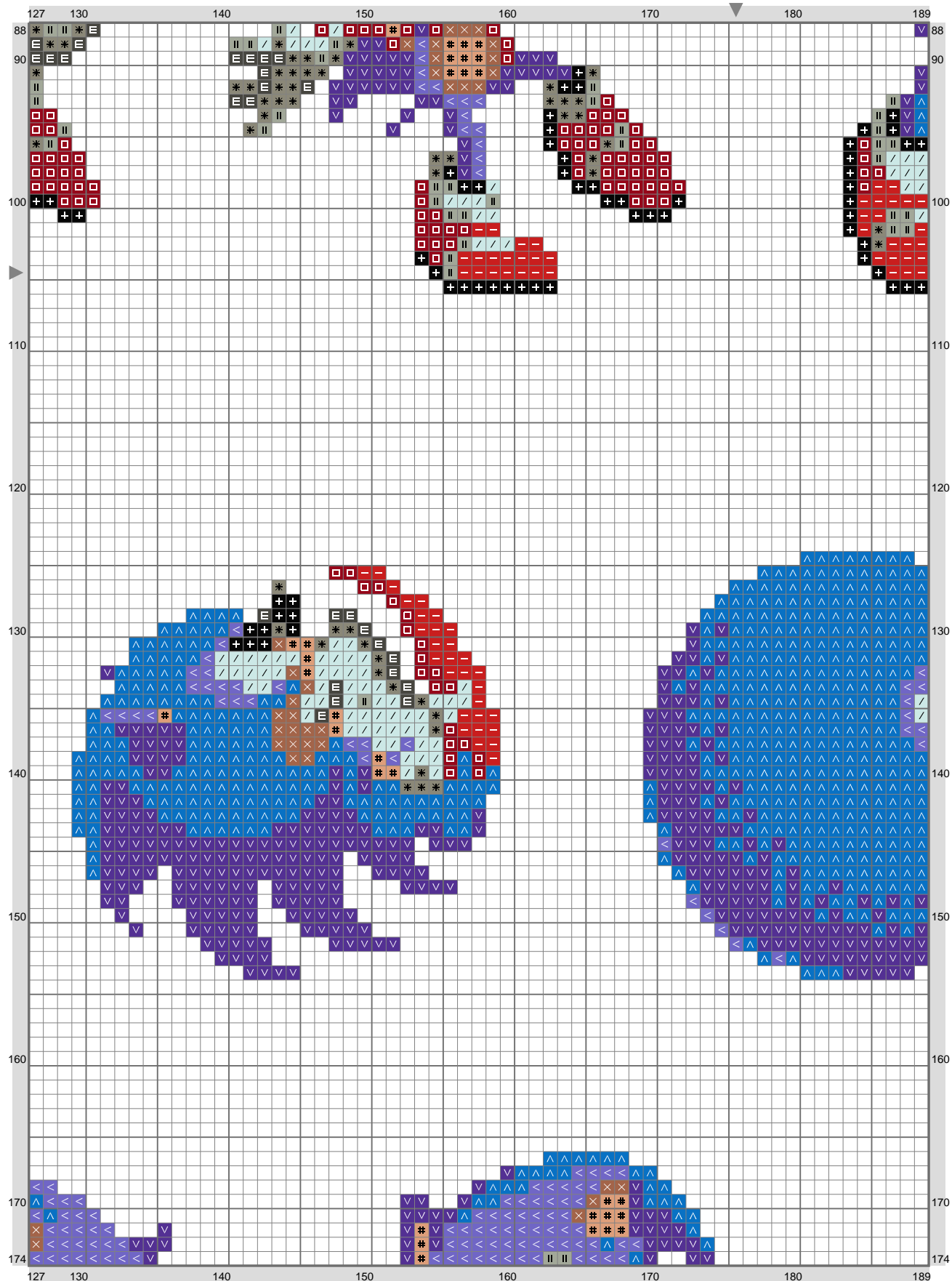
(This chart is printed using KG-Chart LE for Cross Stitch.)

Sonic 2 - 4



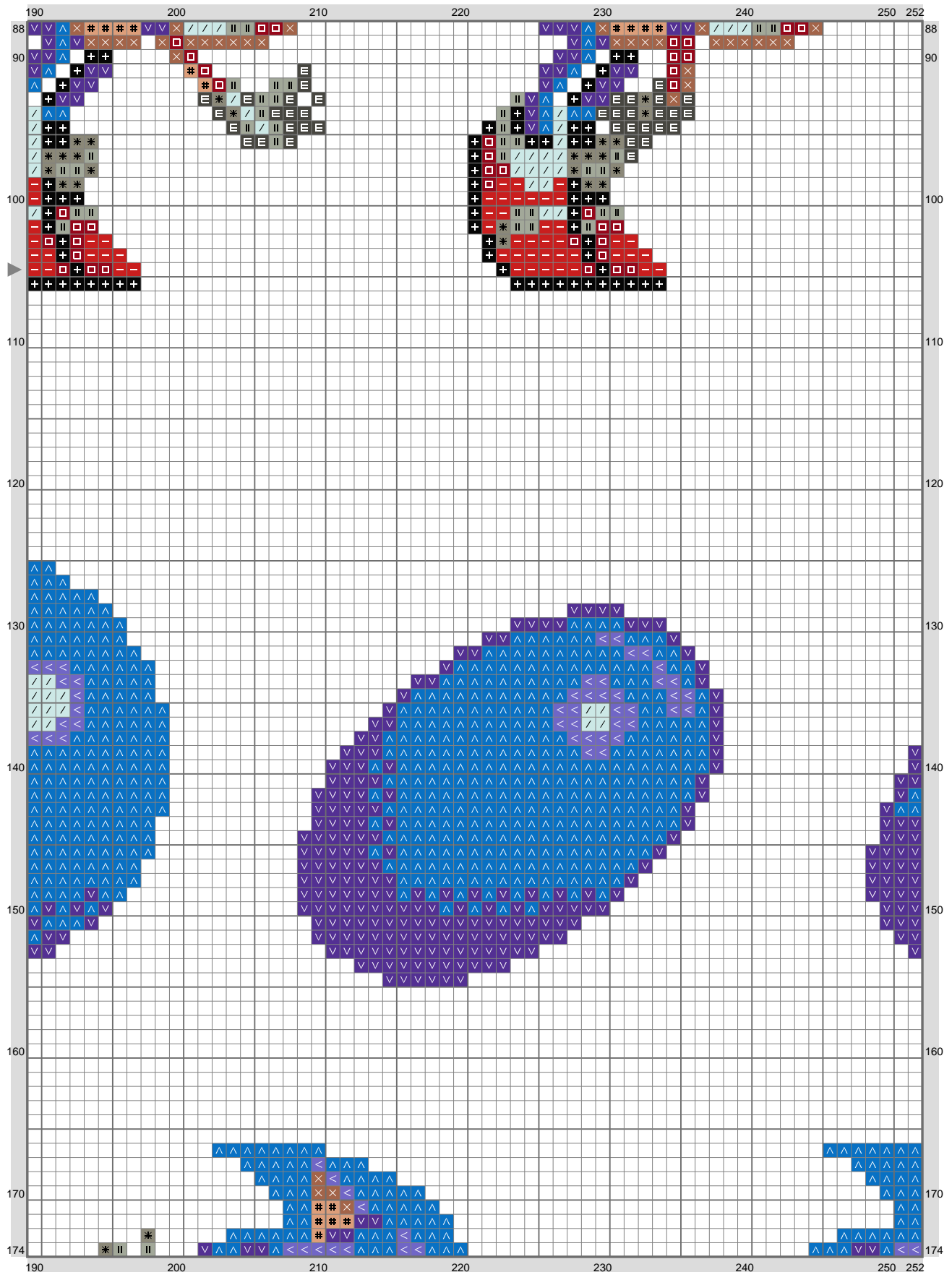
(This chart is printed using KG-Chart LE for Cross Stitch.)

Sonic 2 - 4



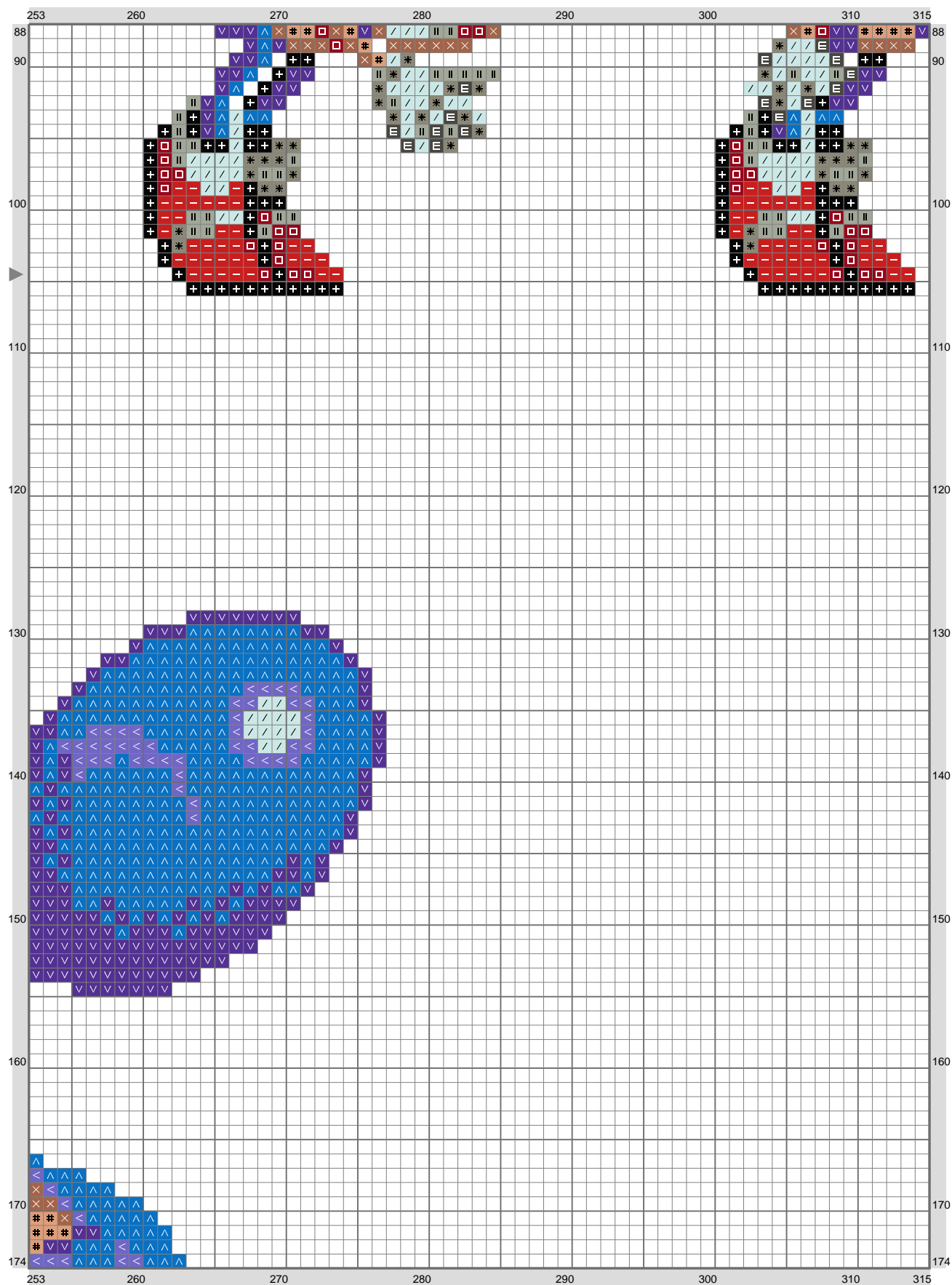
(This chart is printed using KG-Chart LE for Cross Stitch.)

Sonic 2 - 4



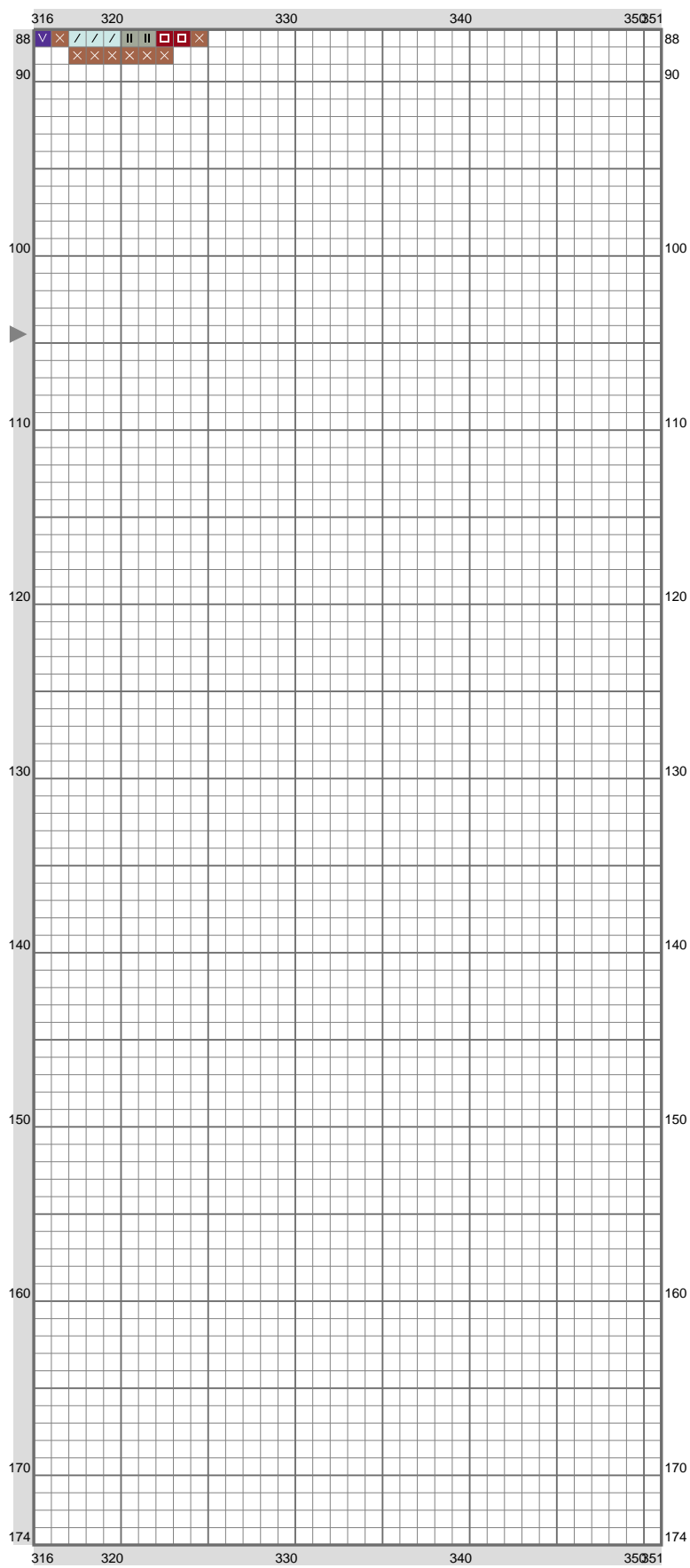
(This chart is printed using KG-Chart LE for Cross Stitch.)

Sonic 2 - 4

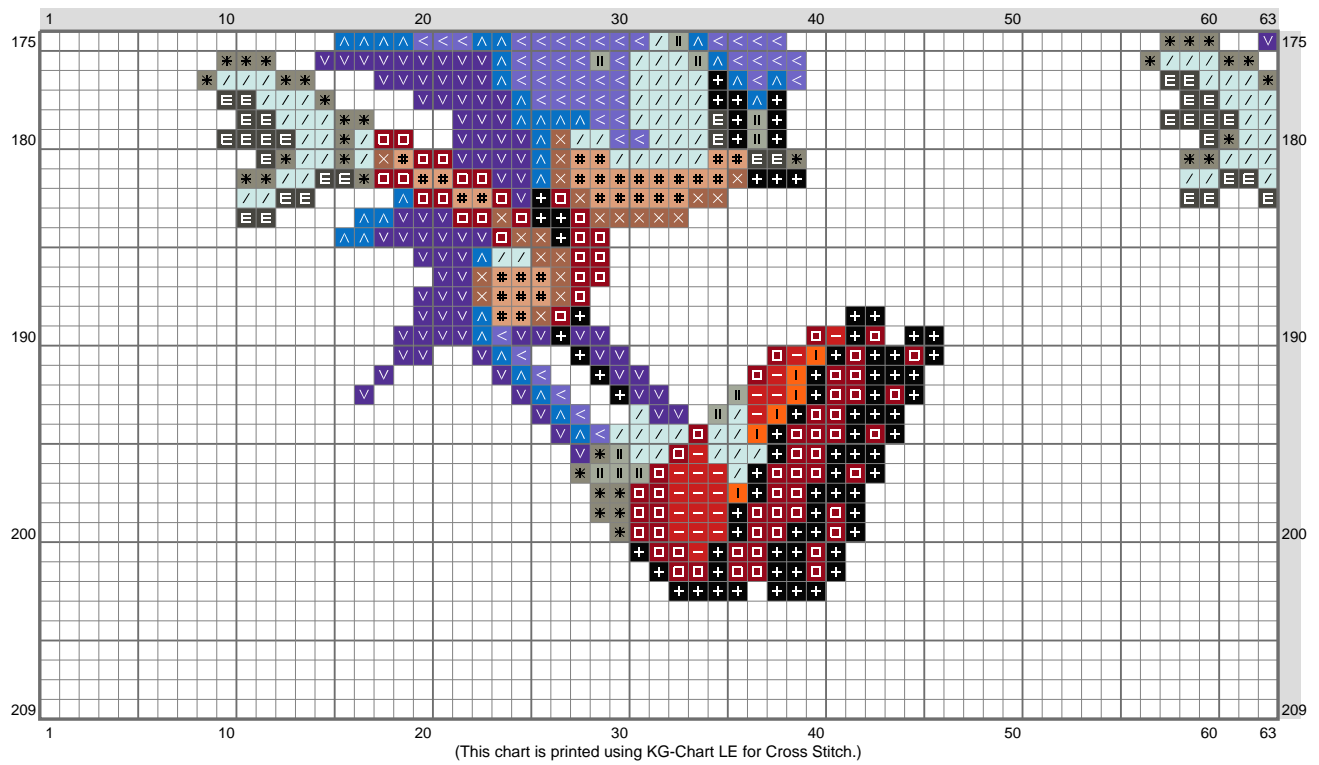


(This chart is printed using KG-Chart LE for Cross Stitch.)

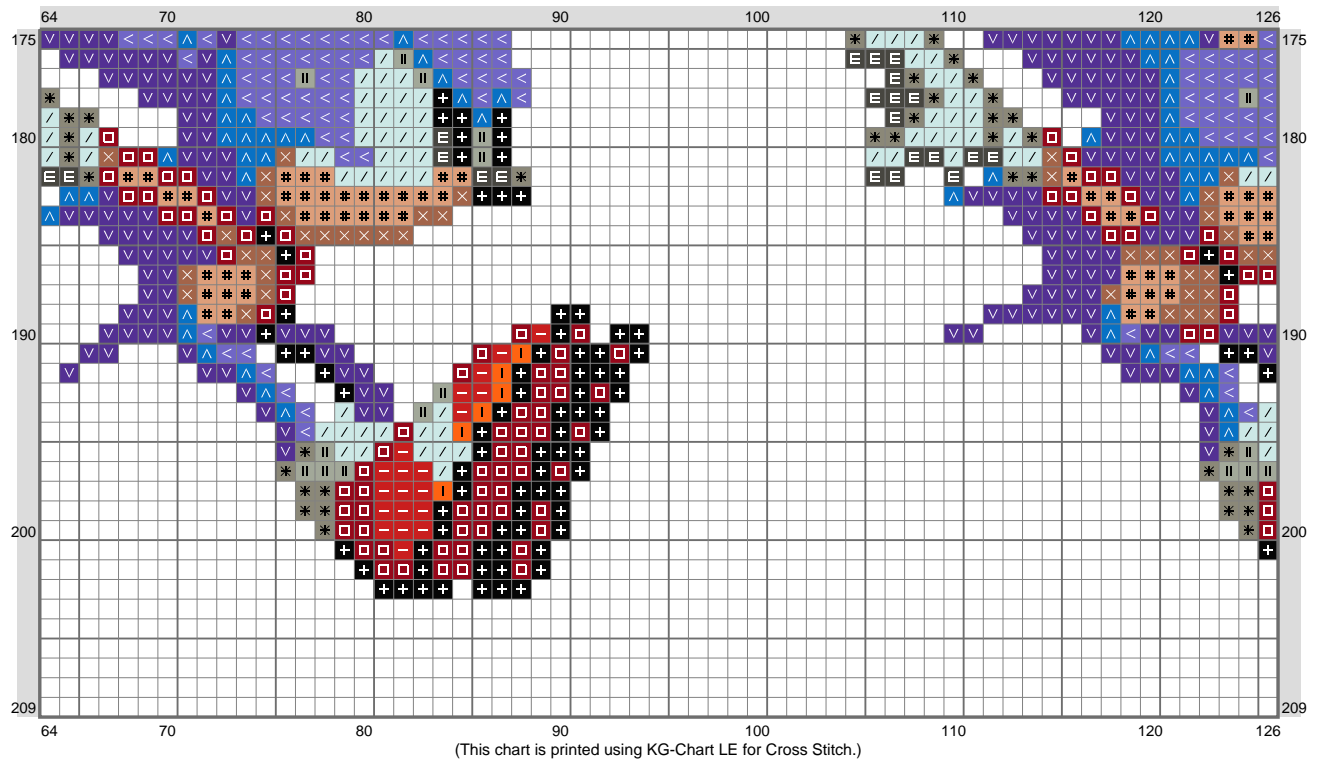
Sonic 2 - 4



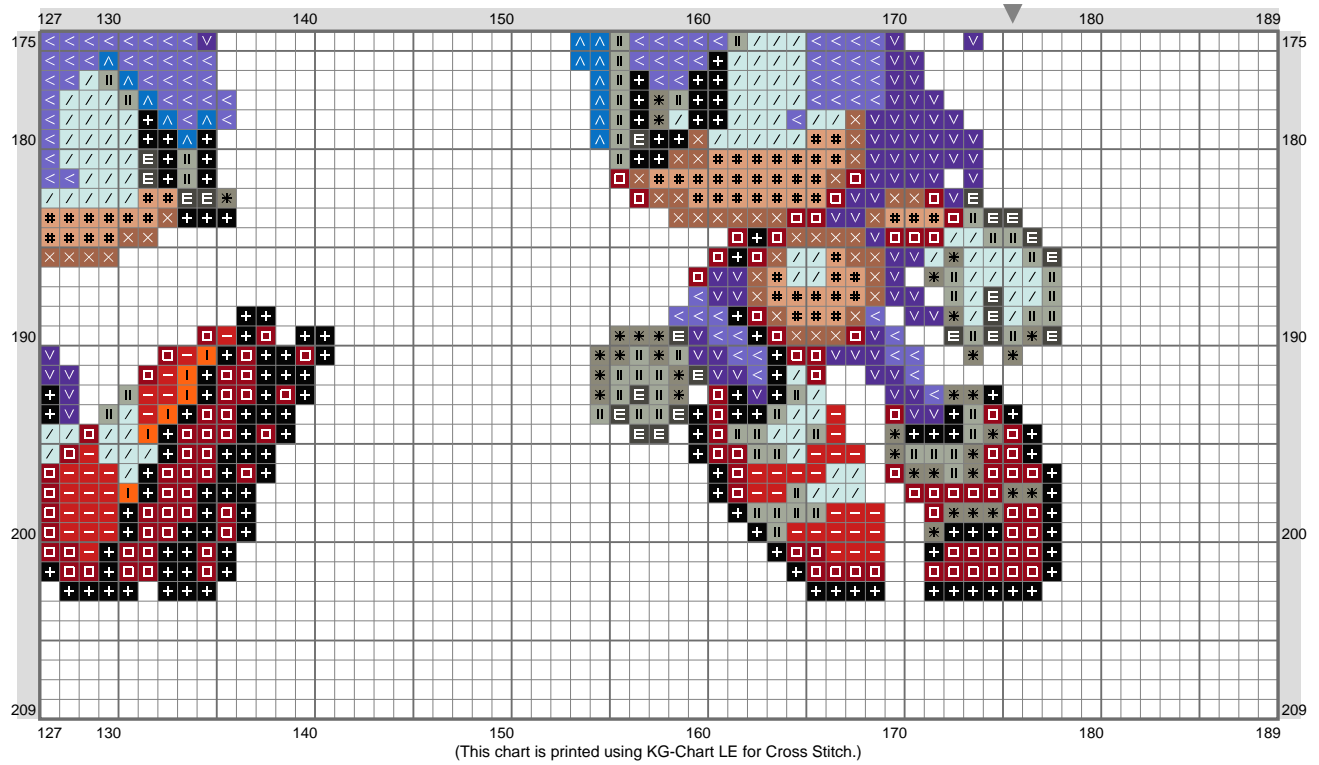
Sonic 2 - 4



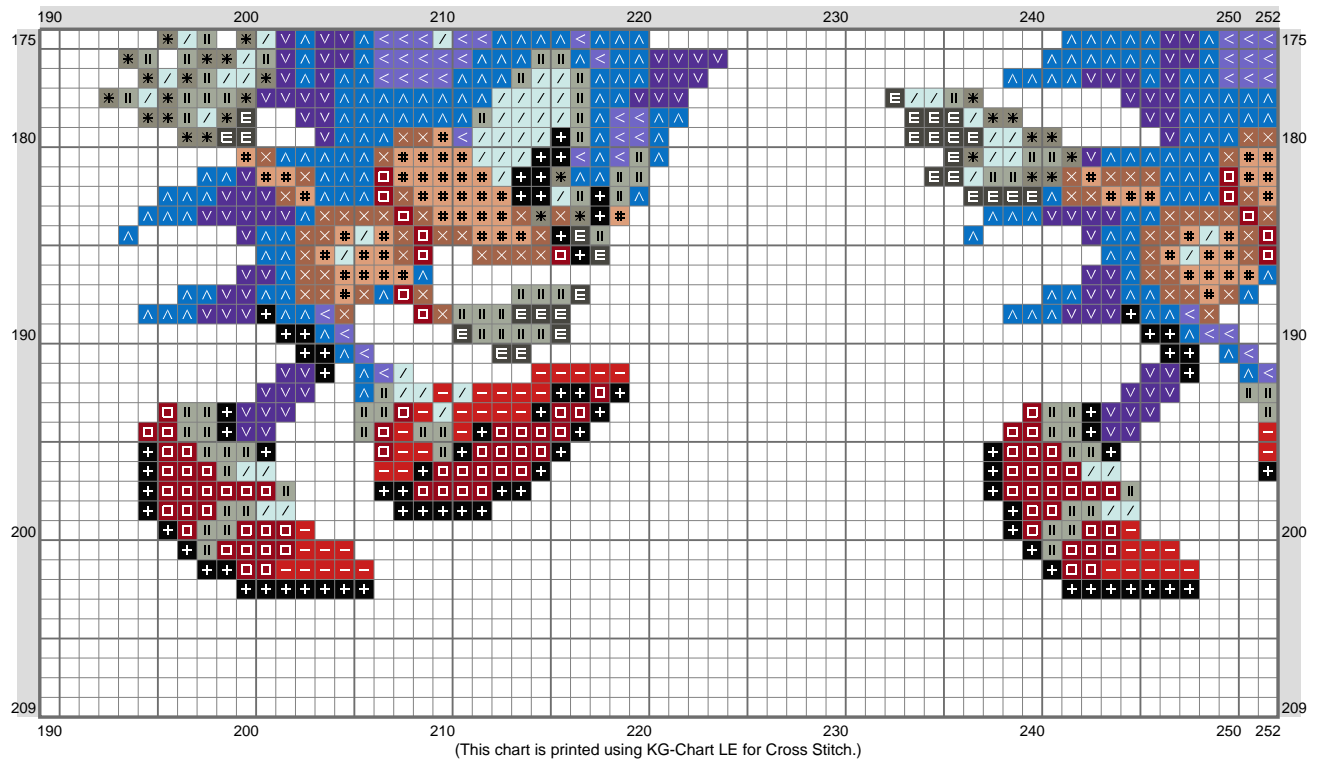
Sonic 2 - 4



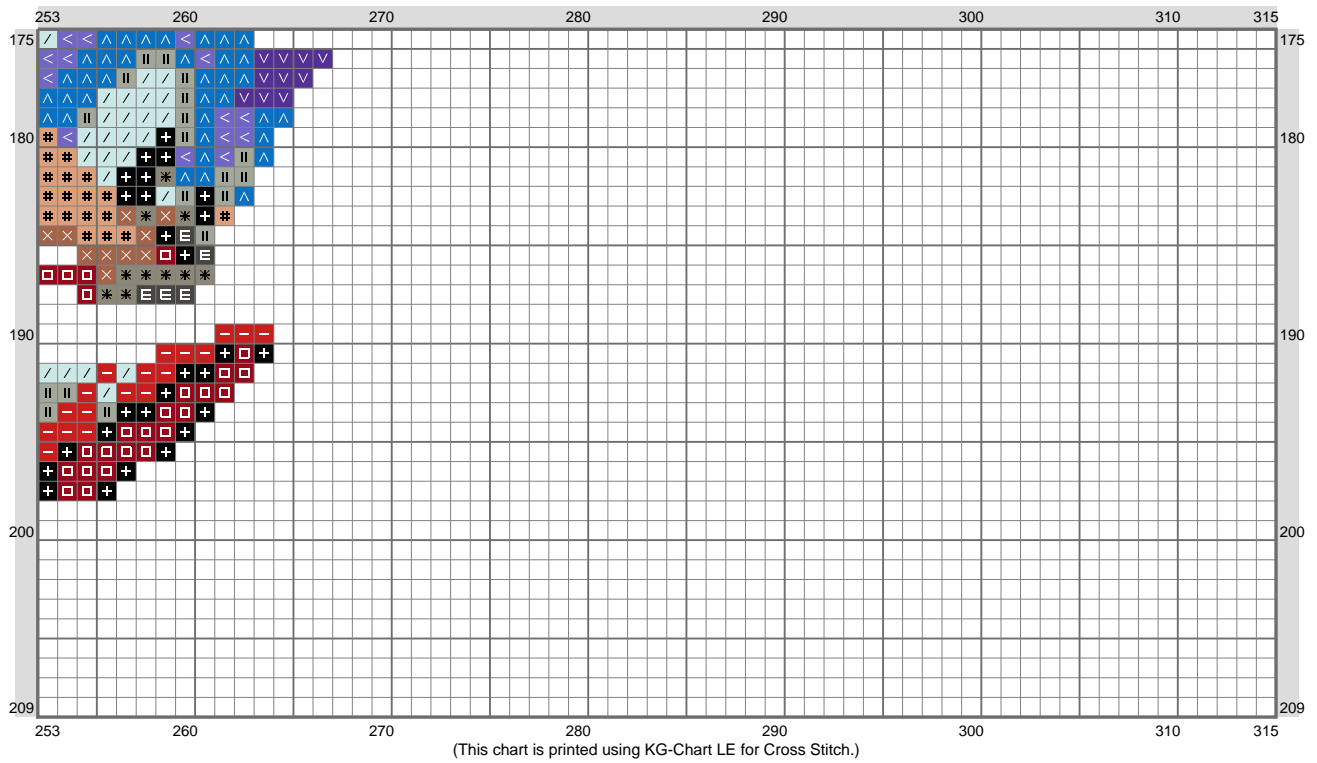
Sonic 2 - 4



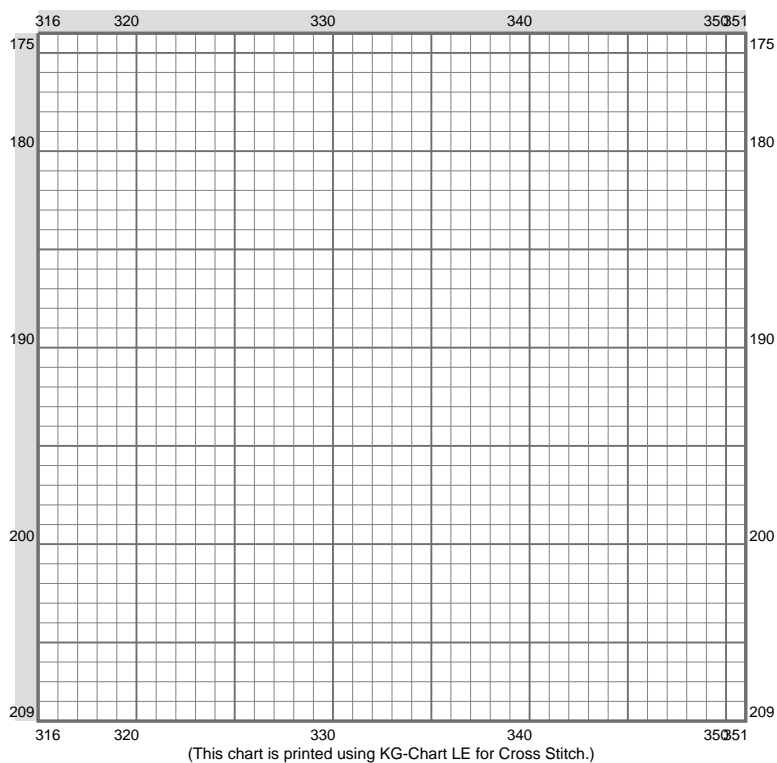
Sonic 2 - 4



Sonic 2 - 4



Sonic 2 - 4



Stitch Count: 351w x 209h

Finished Size: 49.53 cm x 29.49 cm (18 ct./inch)

Cloth: Aida

Cloth's Color: White

of colors: 13 Colors

Color Table (DMC)

Cross Stitch

+	310	(996 ct)
≡	3021	(410 ct)
□	498	(919 ct)
—	817	(435 ct)
×	434	(551 ct)
*	640	(437 ct)
I	740	(18 ct)
#	436	(649 ct)
∇	796	(3337 ct)
△	3843	(4447 ct)
	3022	(606 ct)
<	3838	(1656 ct)
/	828	(1120 ct)