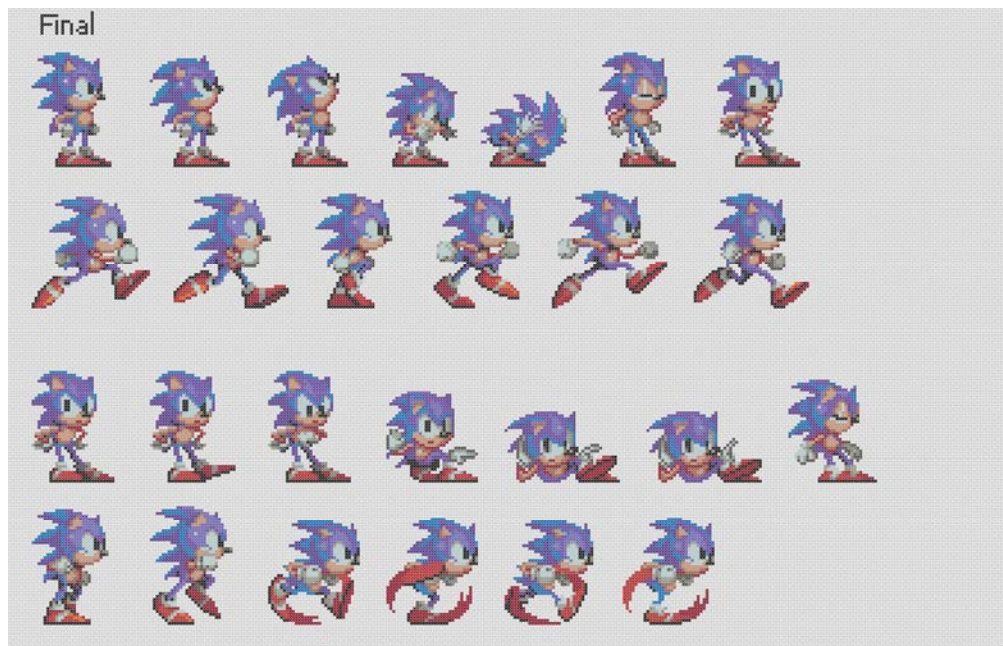
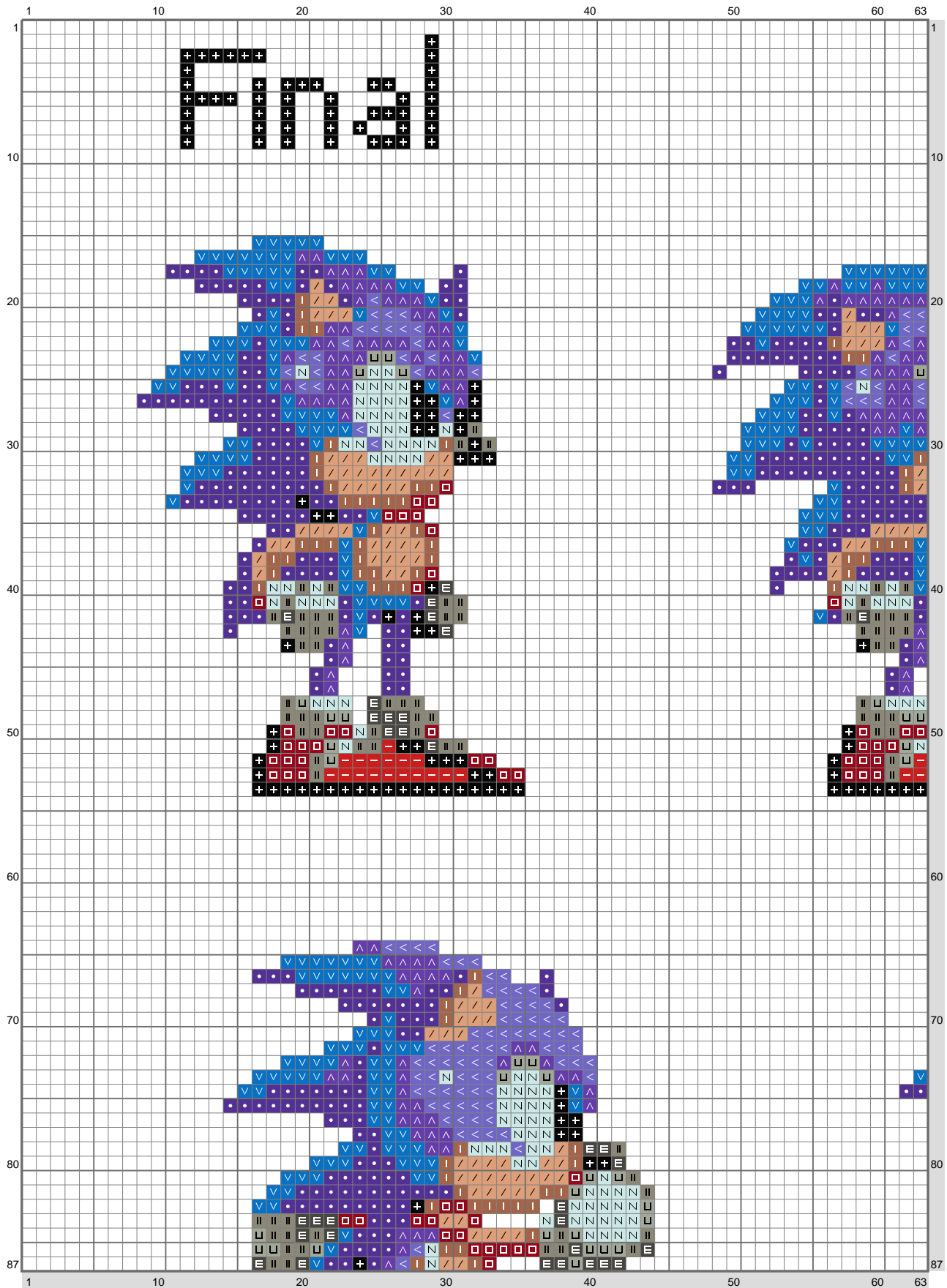


## Sonic 2 - 1

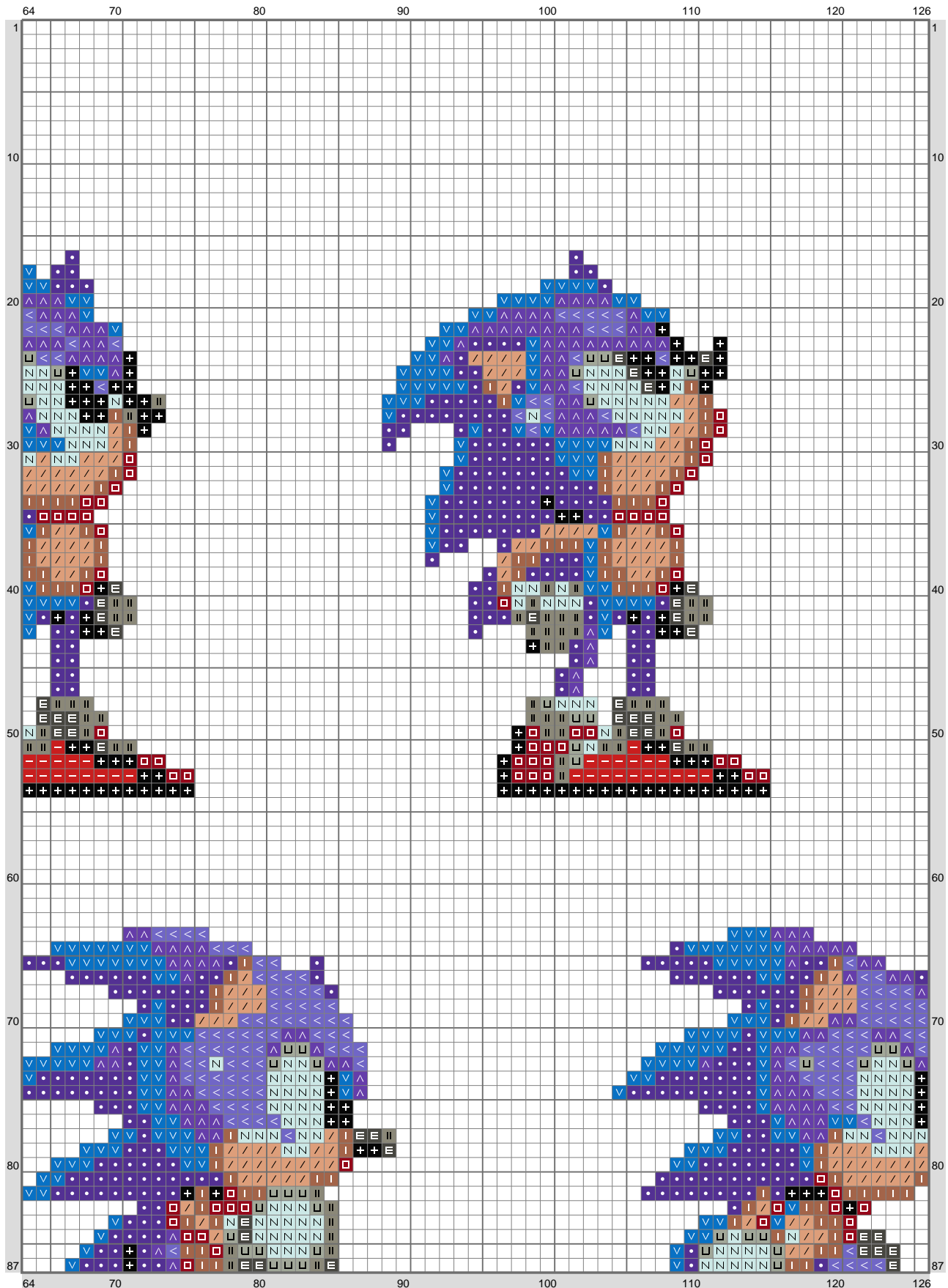


# Sonic 2 - 1



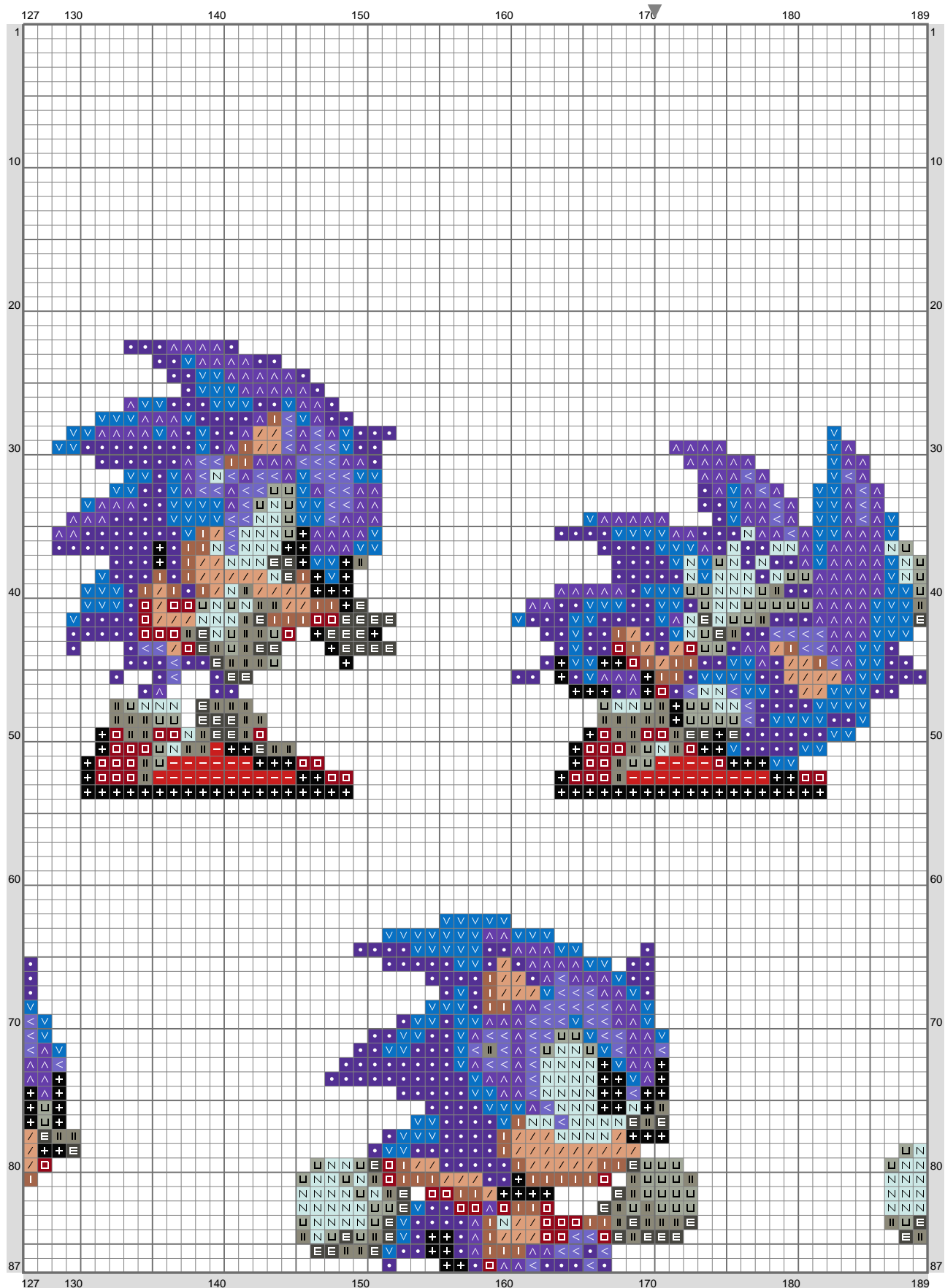
(This chart is printed using KG-Chart LE for Cross Stitch.)

# Sonic 2 - 1



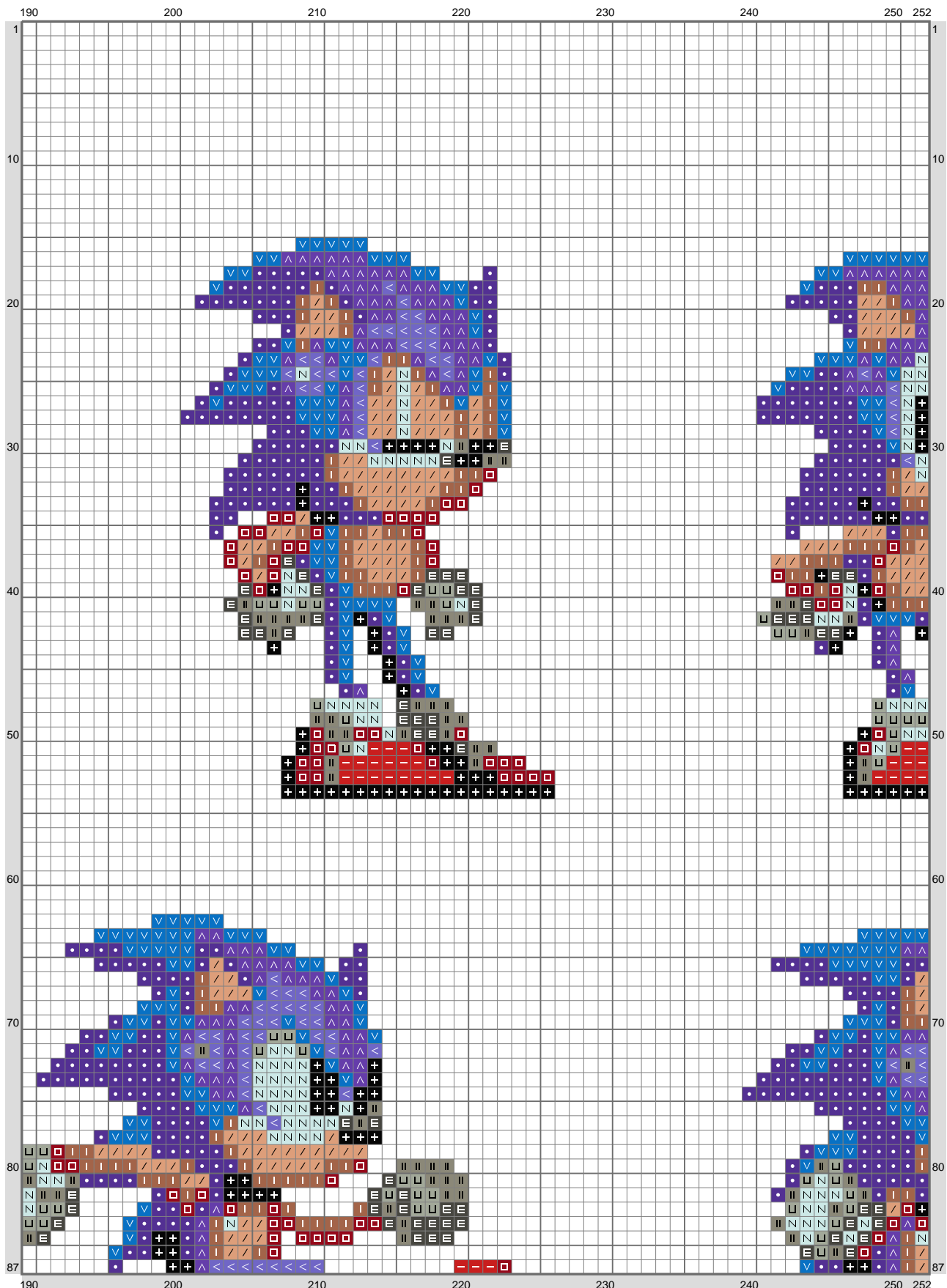
(This chart is printed using KG-Chart LE for Cross Stitch.)

# Sonic 2 - 1



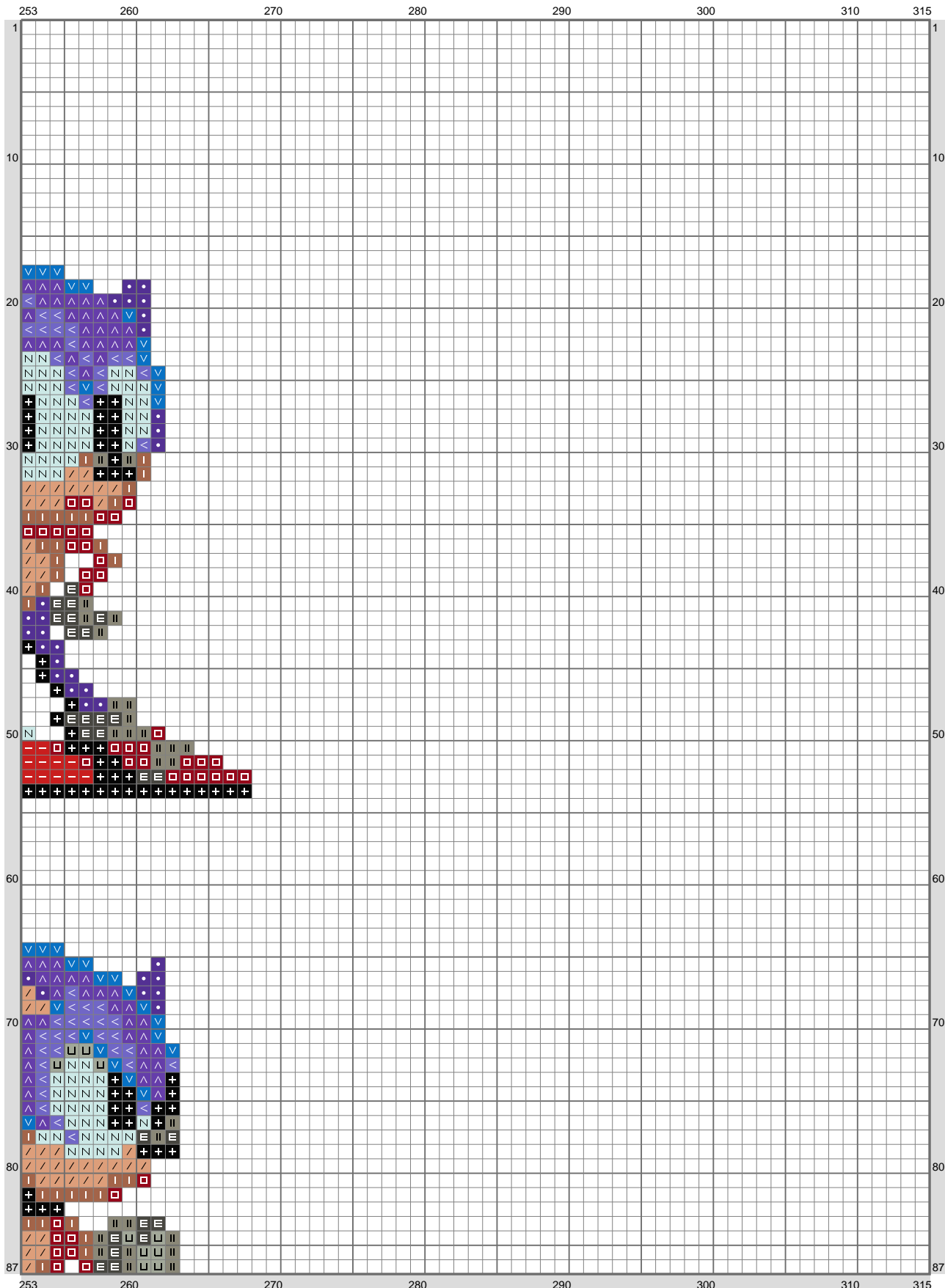
(This chart is printed using KG-Chart LE for Cross Stitch.)

# Sonic 2 - 1



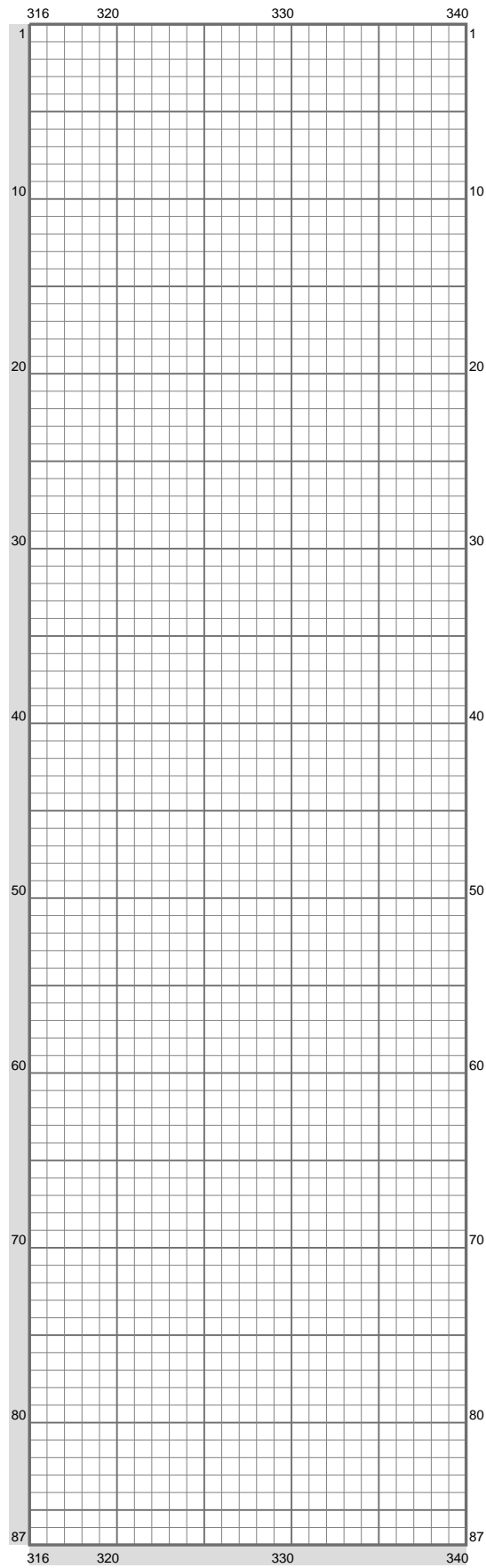
(This chart is printed using KG-Chart LE for Cross Stitch.)

## Sonic 2 - 1



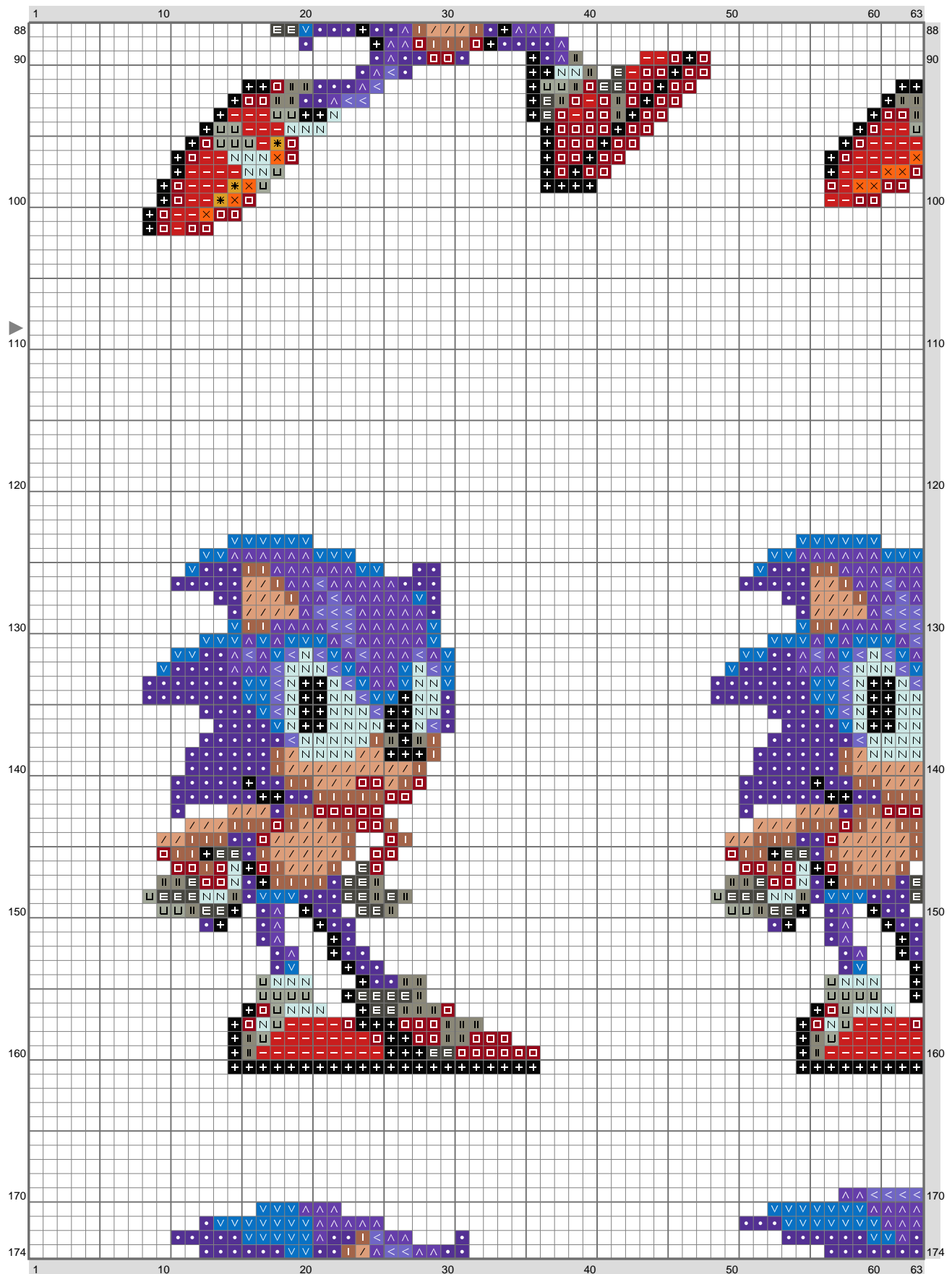
(This chart is printed using K<sup>G</sup>-Chart LE for Cross Stitch.)

# Sonic 2 - 1



(This chart is printed using KG-Chart LE for Cross Stitch.)

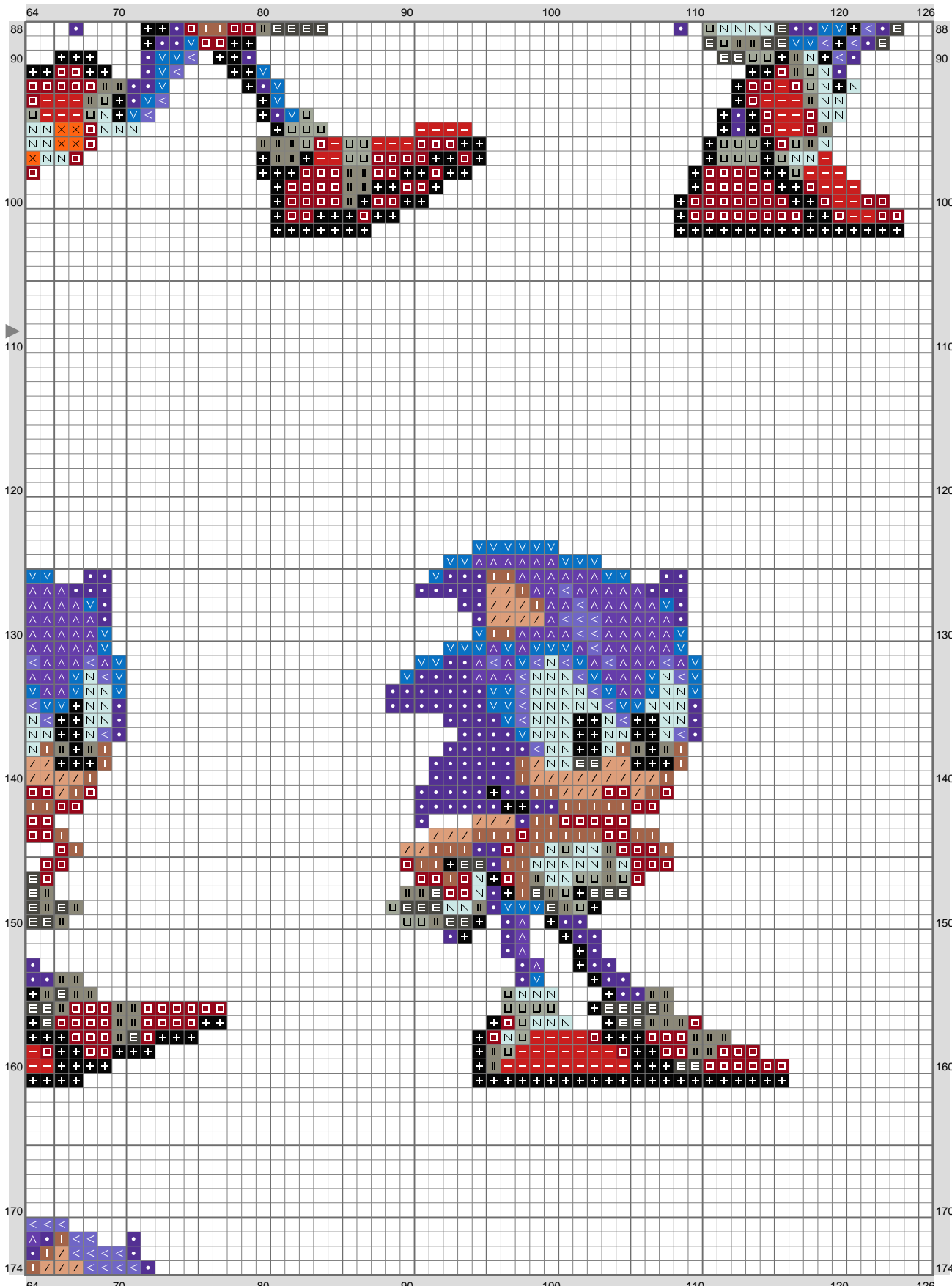
# Sonic 2 - 1



(This chart is printed using KG-Chart LE for Cross Stitch.)

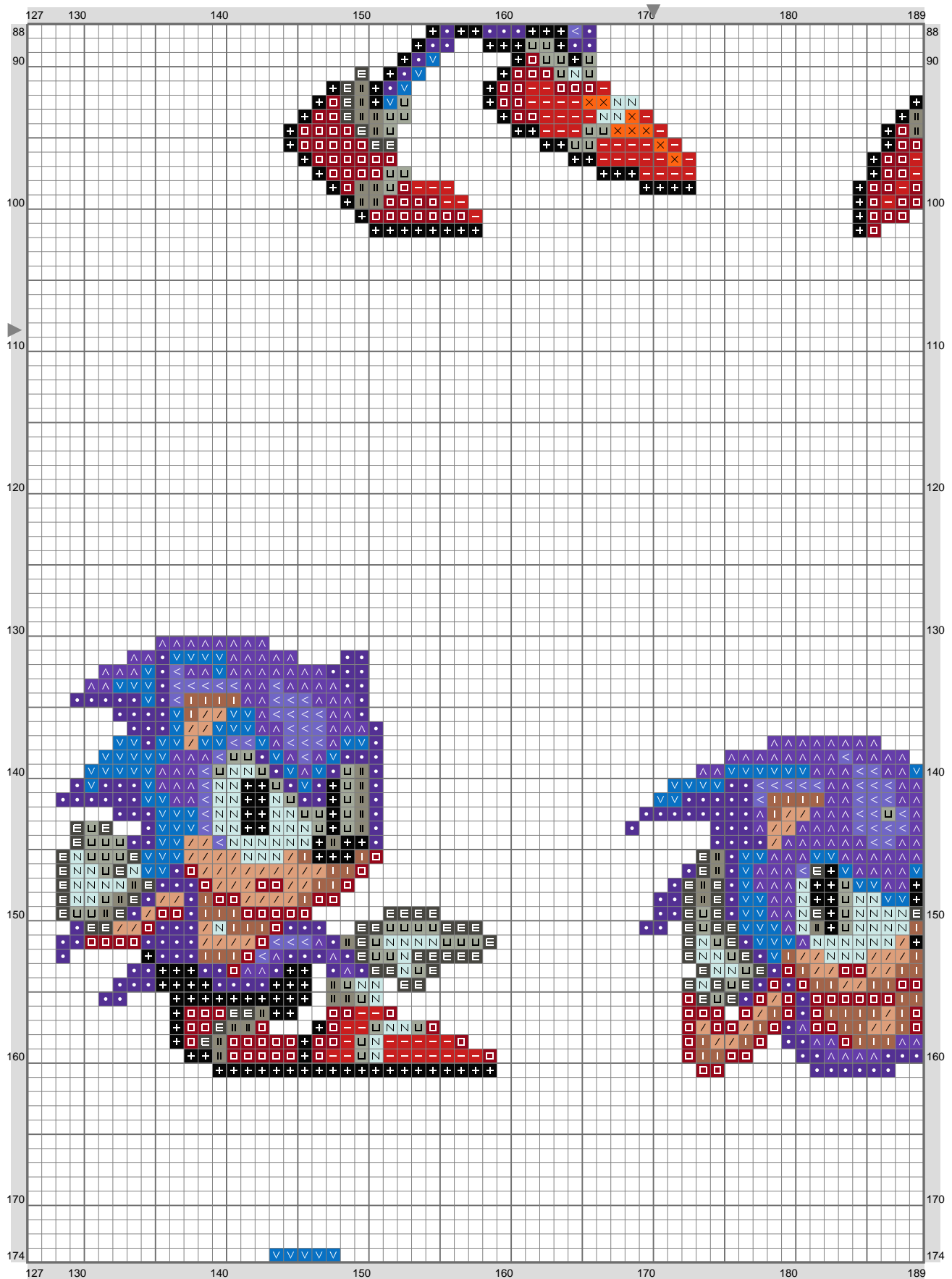


## Sonic 2 - 1



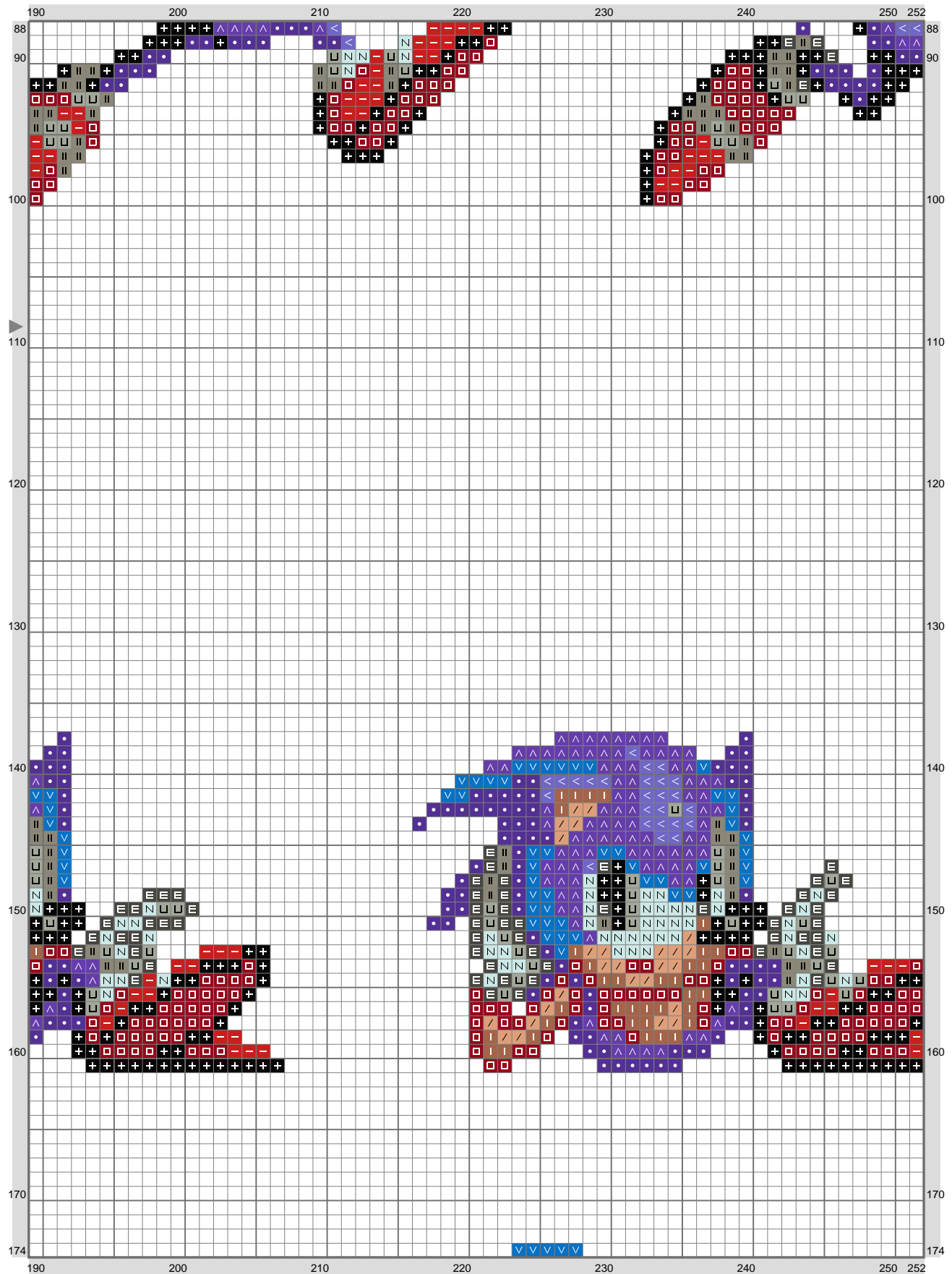
(This chart is printed using KG-Chart LE for Cross Stitch.)

# Sonic 2 - 1



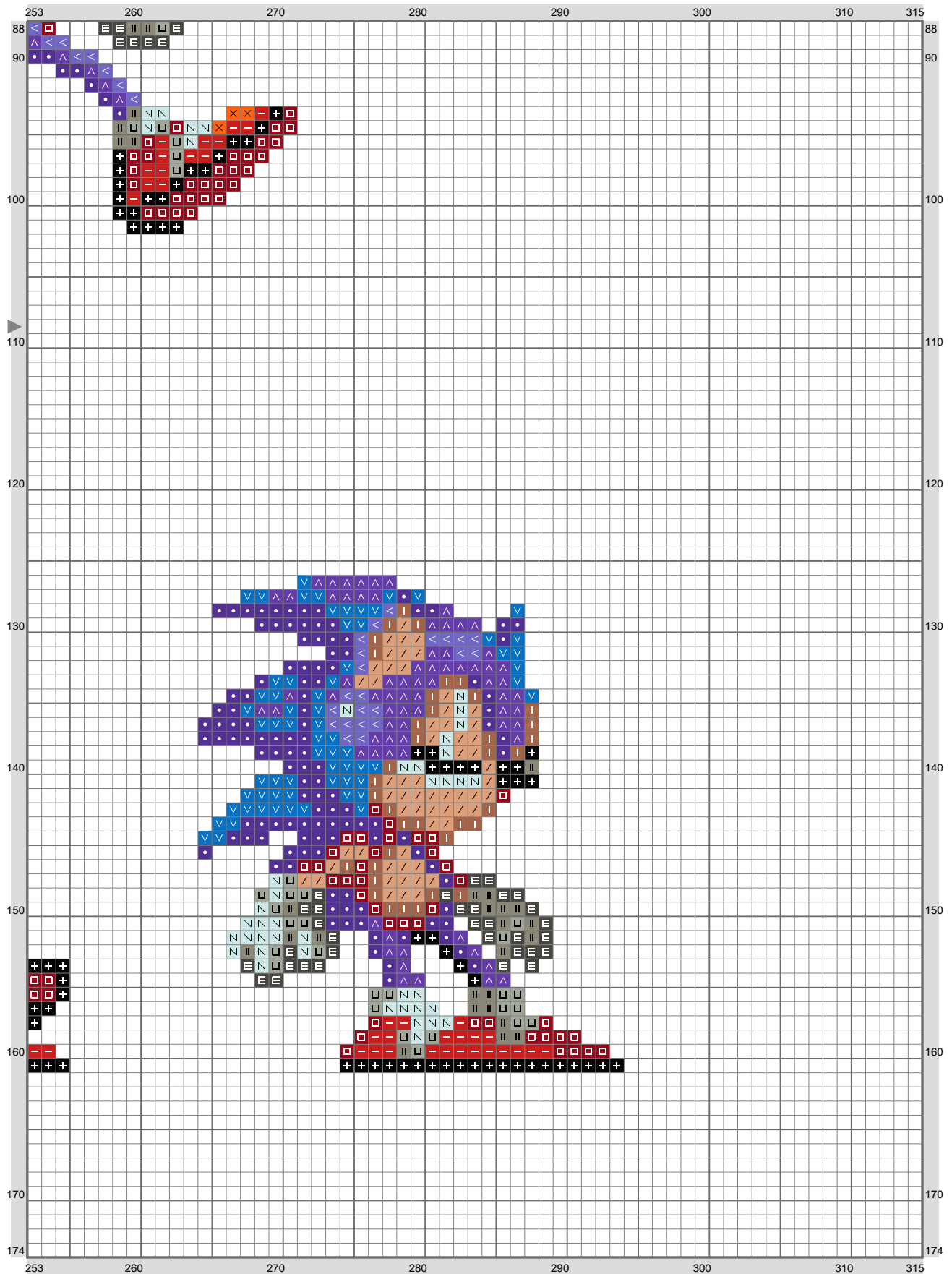
(This chart is printed using KG-Chart LE for Cross Stitch.)

# Sonic 2 - 1



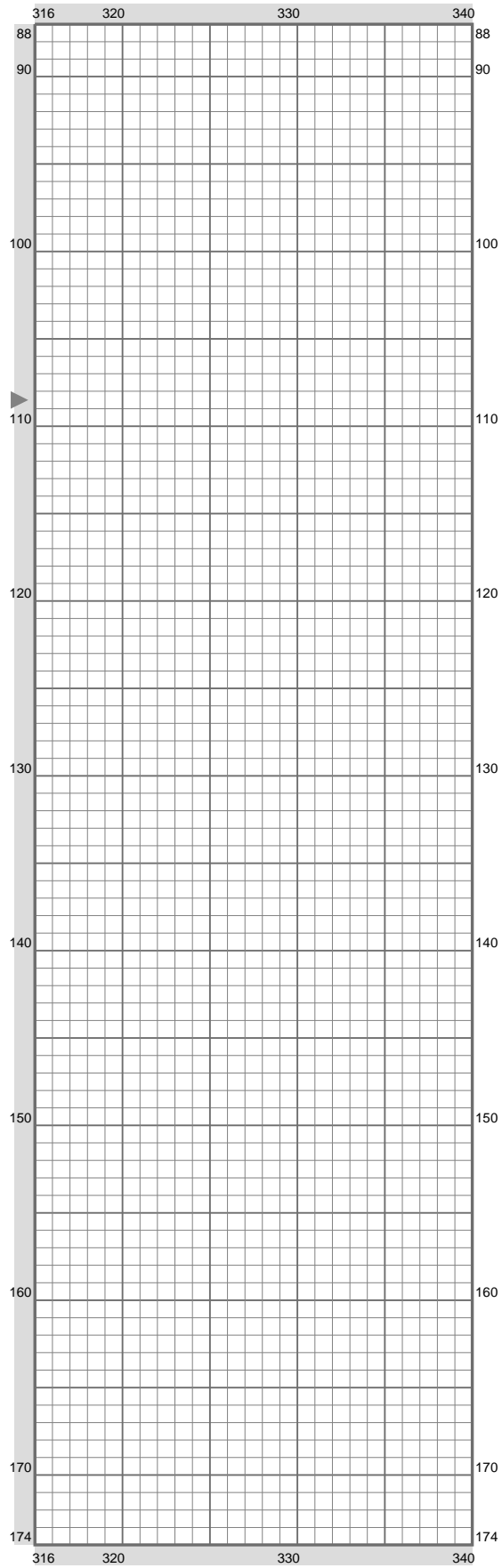
(This chart is printed using KG-Chart LE for Cross Stitch.)

# Sonic 2 - 1



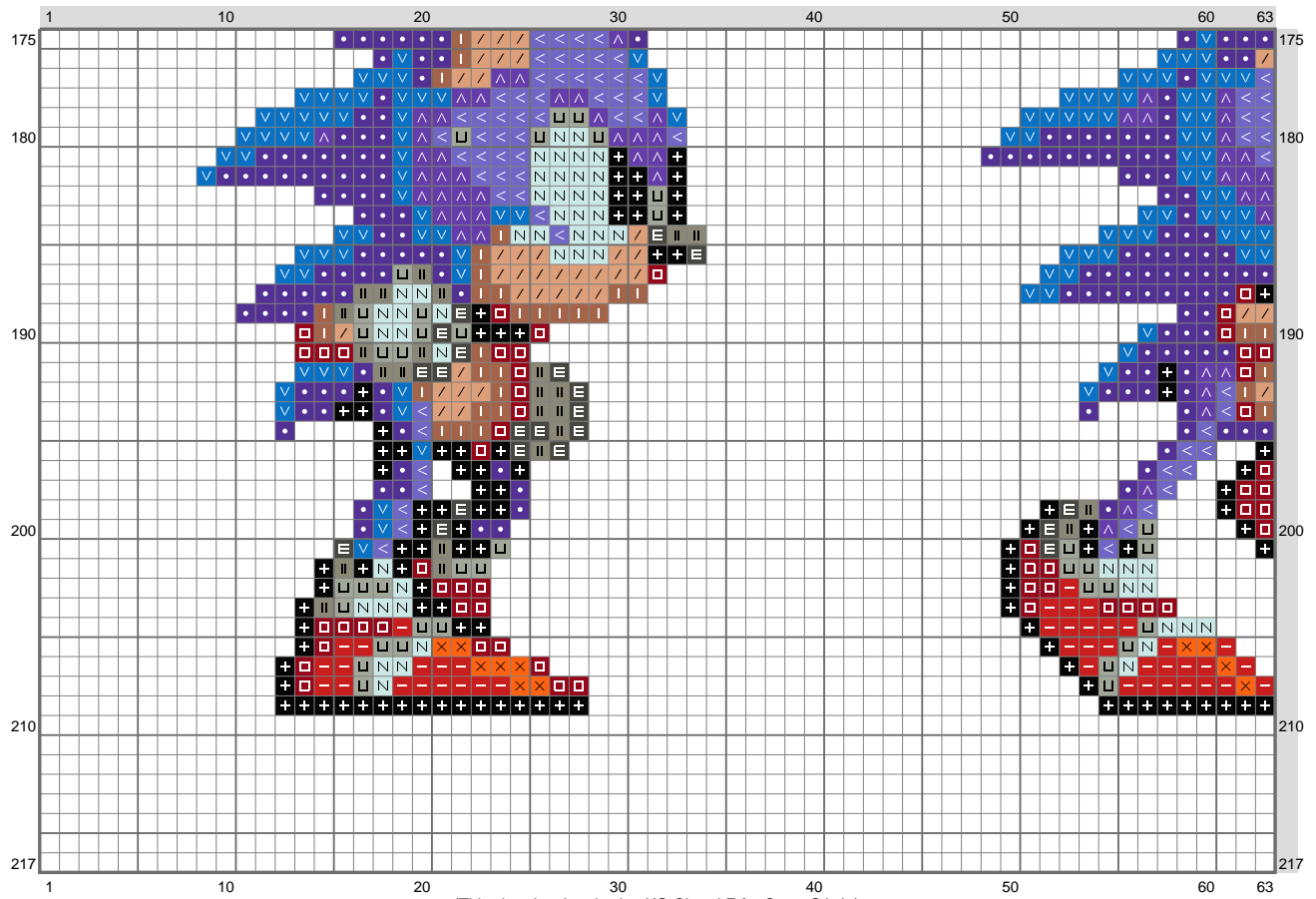
(This chart is printed using KG-Chart LE for Cross Stitch.)

# Sonic 2 - 1

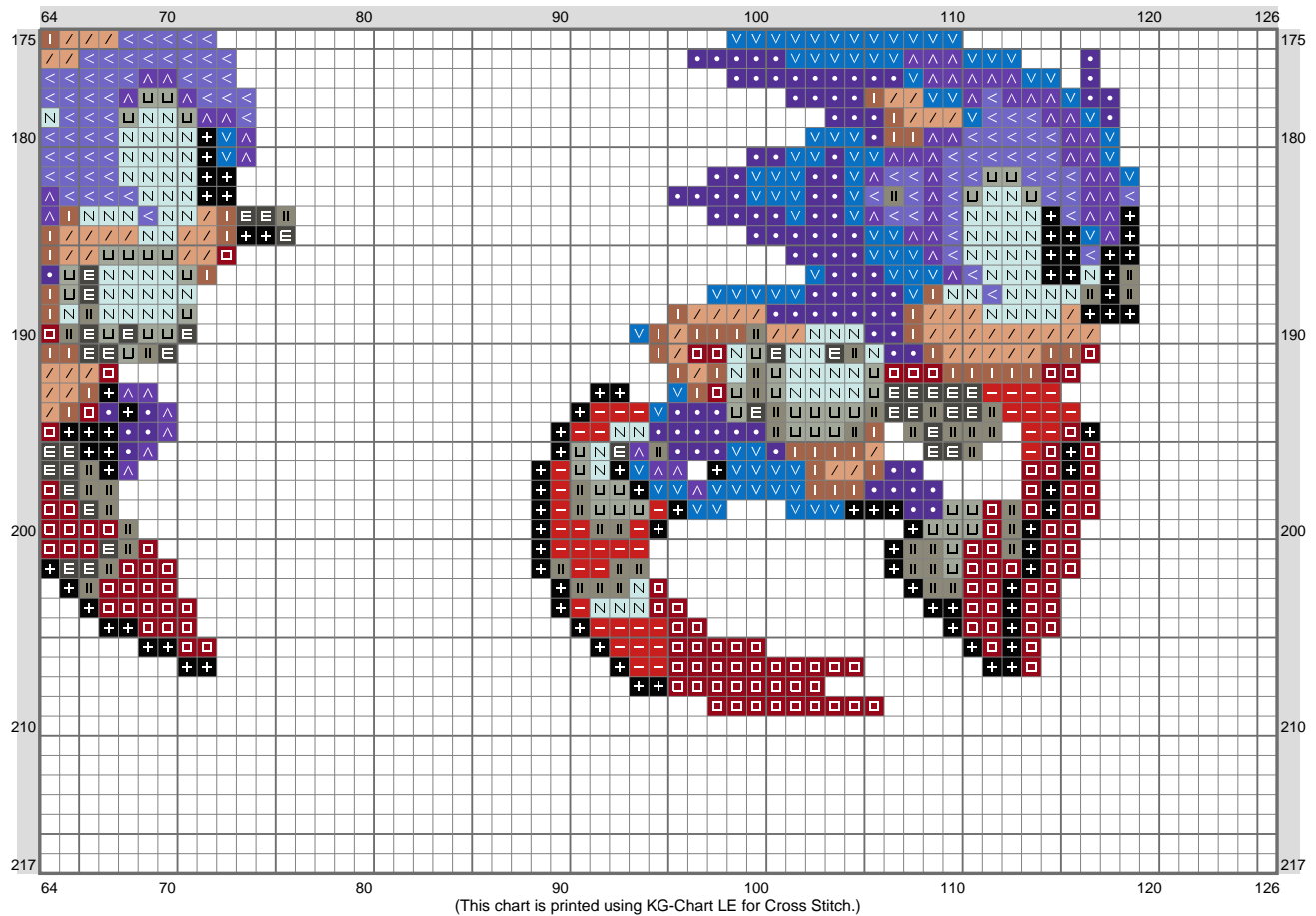


(This chart is printed using KG-Chart LE for Cross Stitch.)

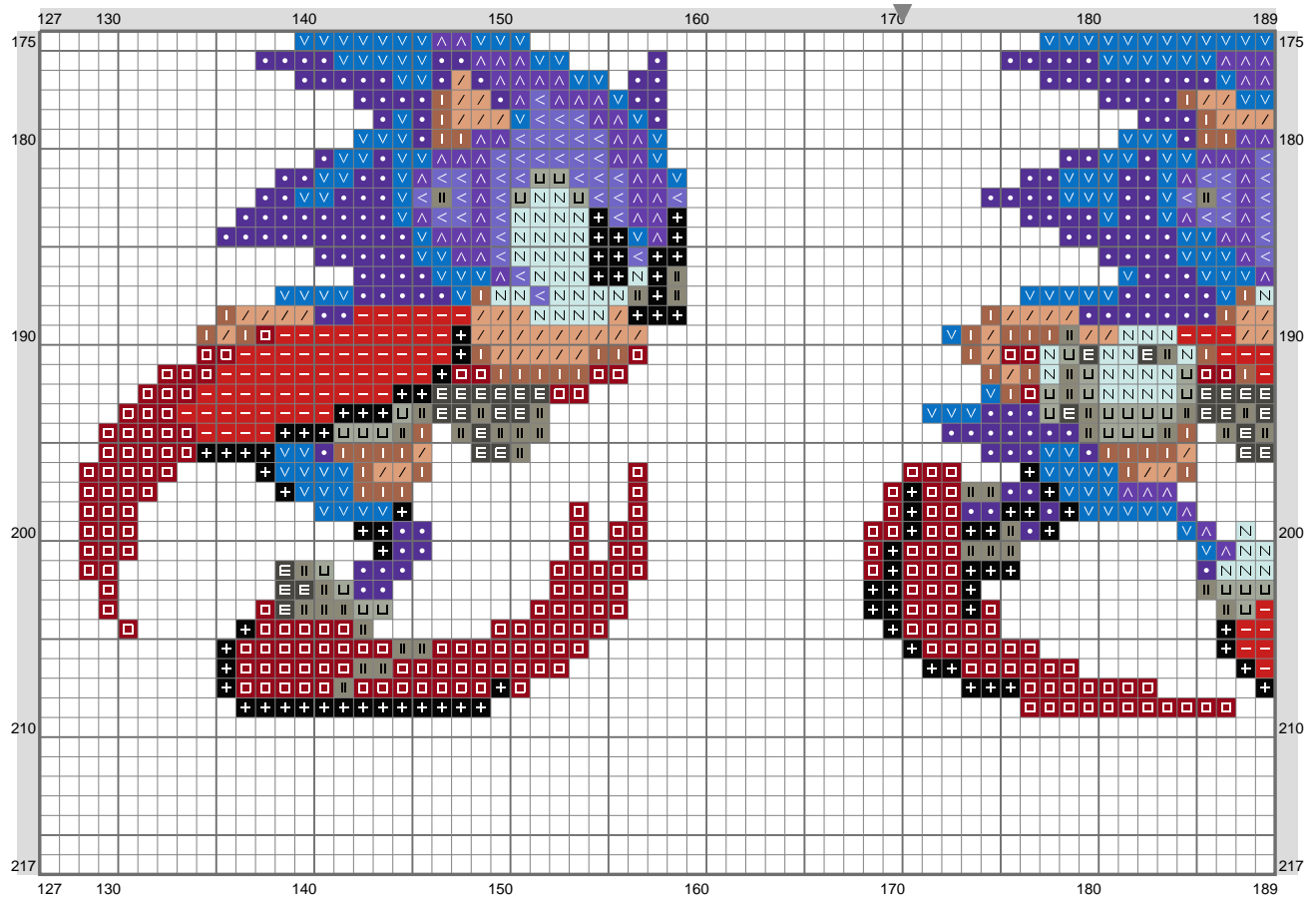
# Sonic 2 - 1



# Sonic 2 - 1

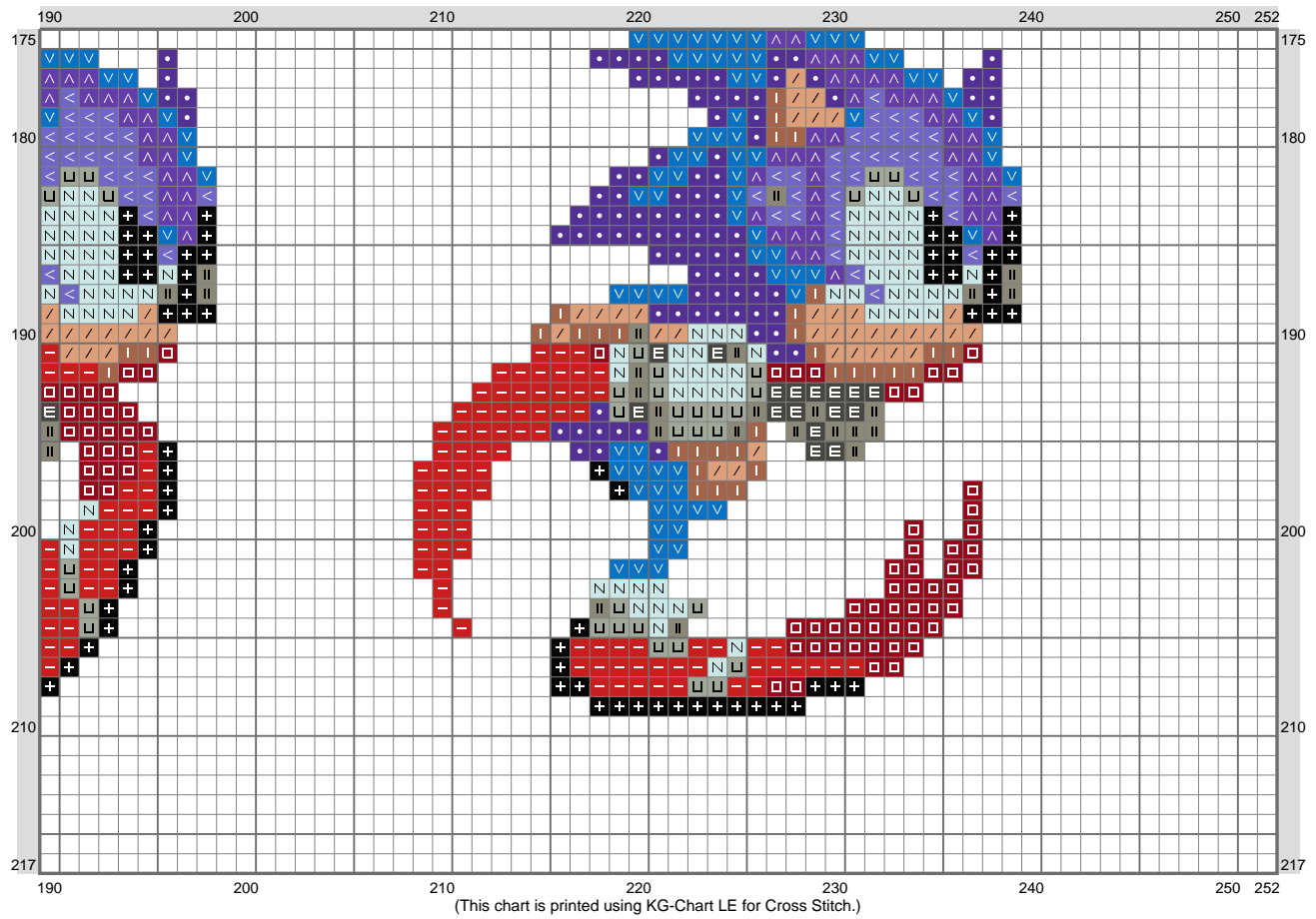


## Sonic 2 - 1

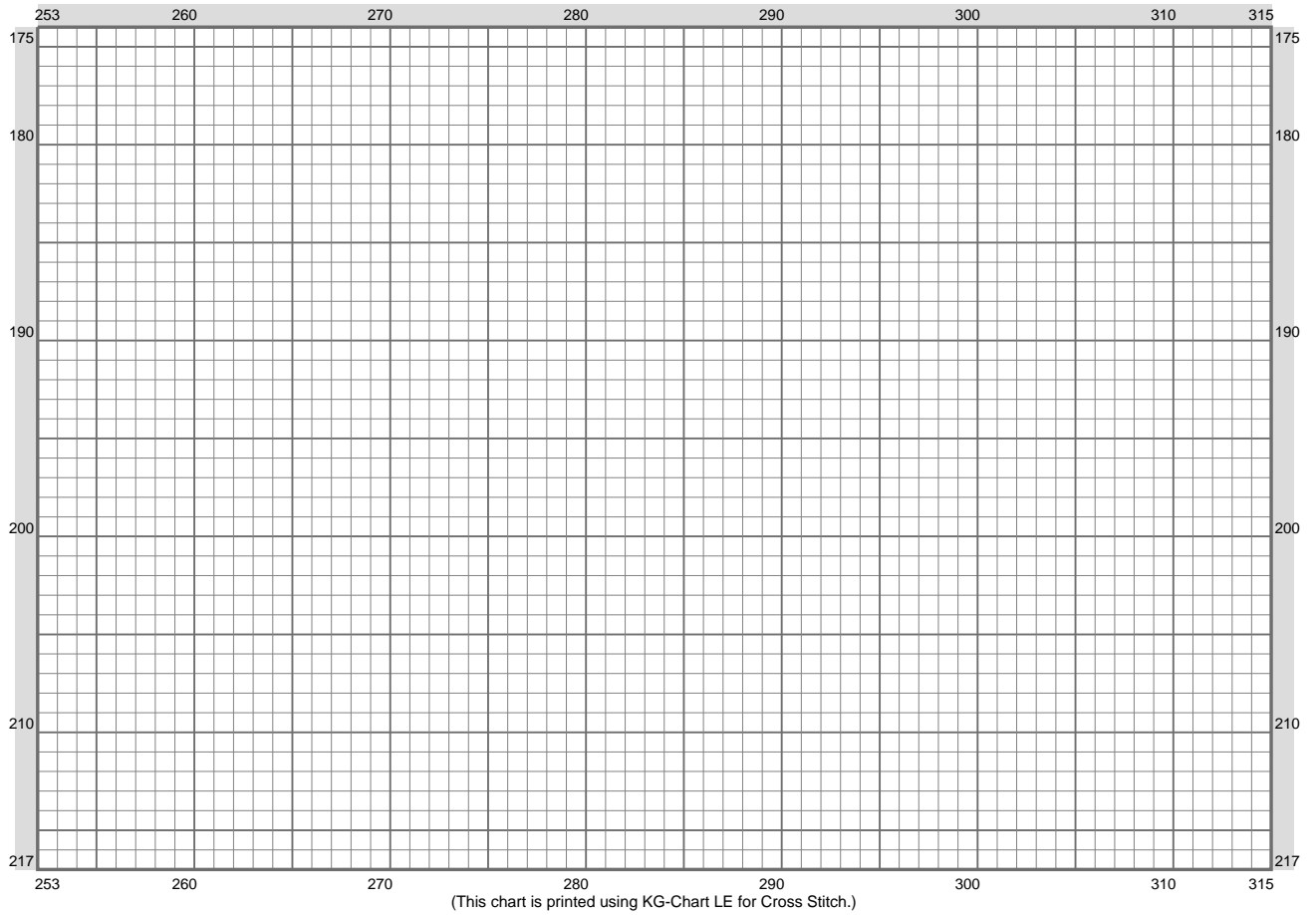




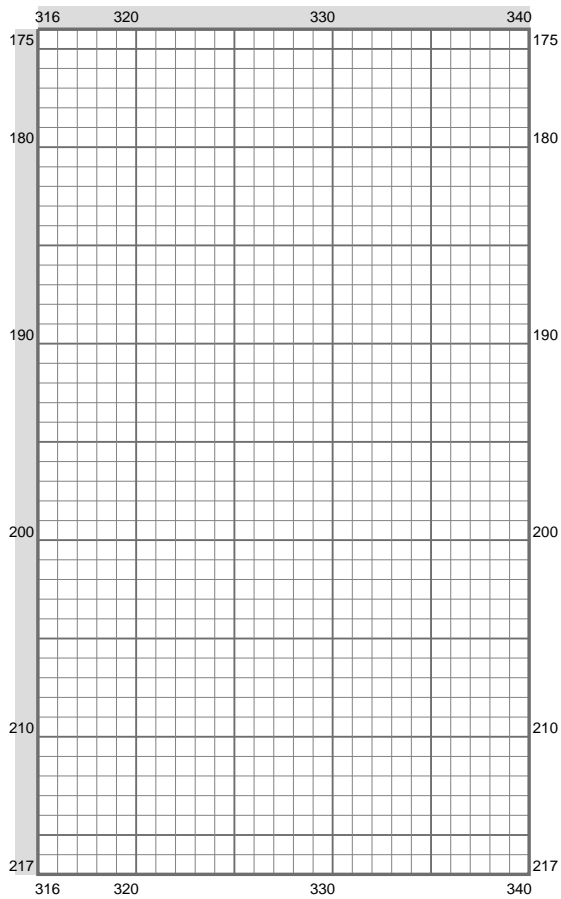
# Sonic 2 - 1



## Sonic 2 - 1



# Sonic 2 - 1



(This chart is printed using KG-Chart LE for Cross Stitch.)

Stitch Count: 340w x 217h  
 Finished Size: 47.97 cm x 30.62 cm (18 ct./inch)  
 Cloth: Aida  
 Cloth's Color: White  
 # of colors: 15 Colors

## Color Table (DMC)

### Cross Stitch

	310	(1623 ct)
	3021	(589 ct)
	498	(1464 ct)
	817	(682 ct)
	740	(36 ct)
	3852	(3 ct)
	434	(831 ct)
	796	(2798 ct)
	3843	(1806 ct)
	797	(1537 ct)
	640	(676 ct)
	3838	(983 ct)
	3022	(602 ct)
	436	(986 ct)
	828	(1169 ct)