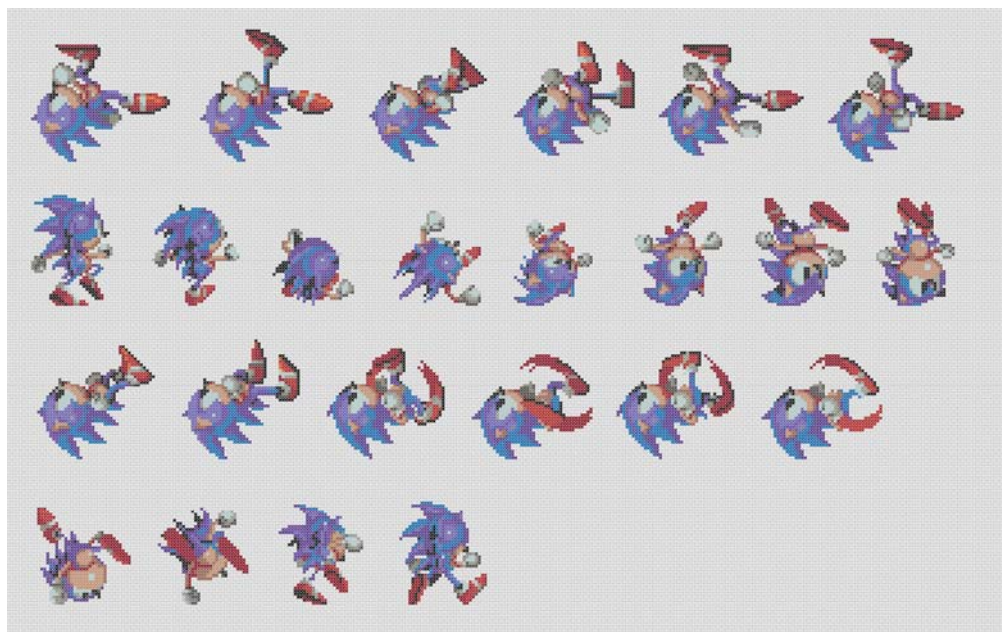
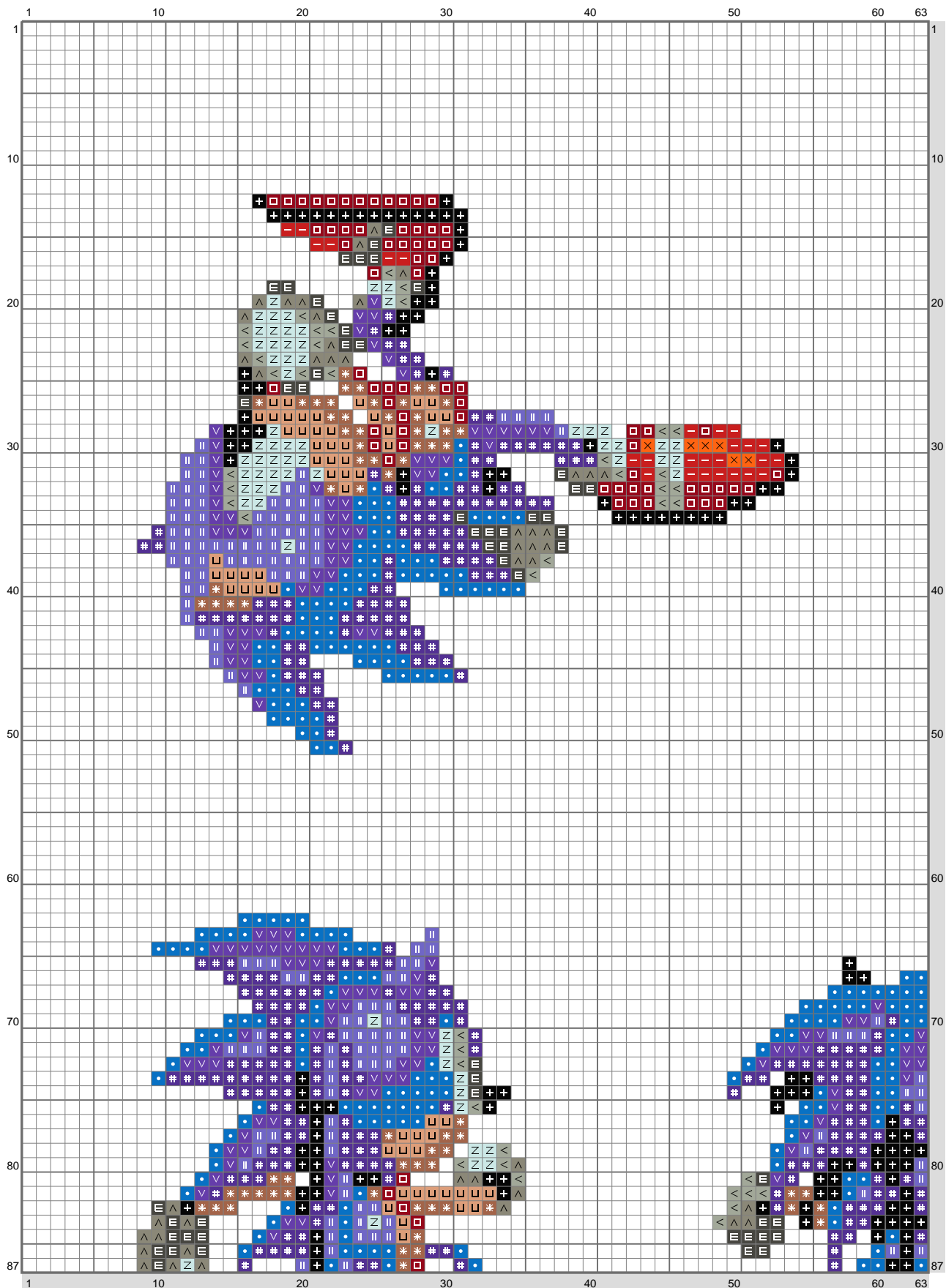


## Sonic 2 - 3

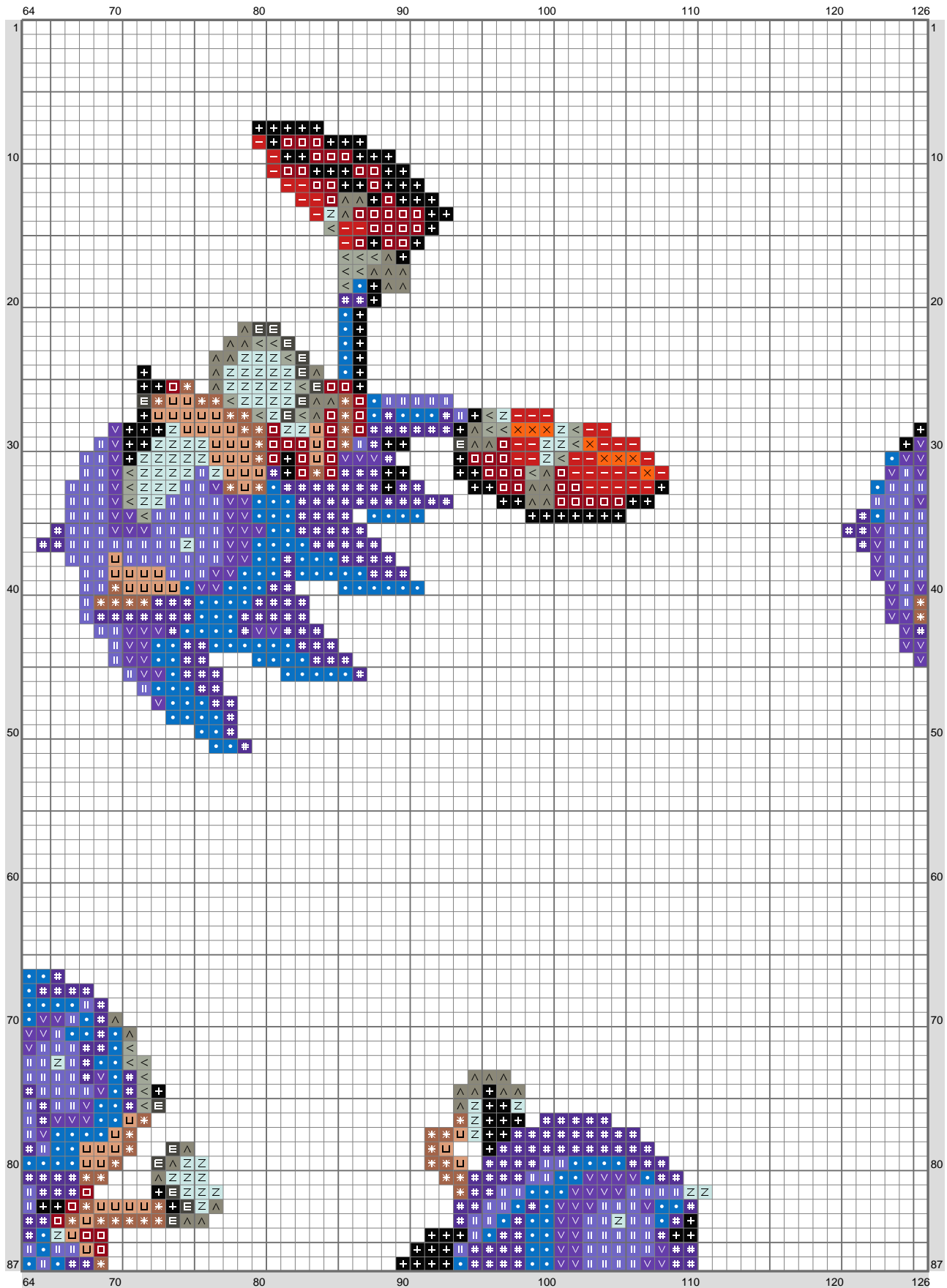


# Sonic 2 - 3



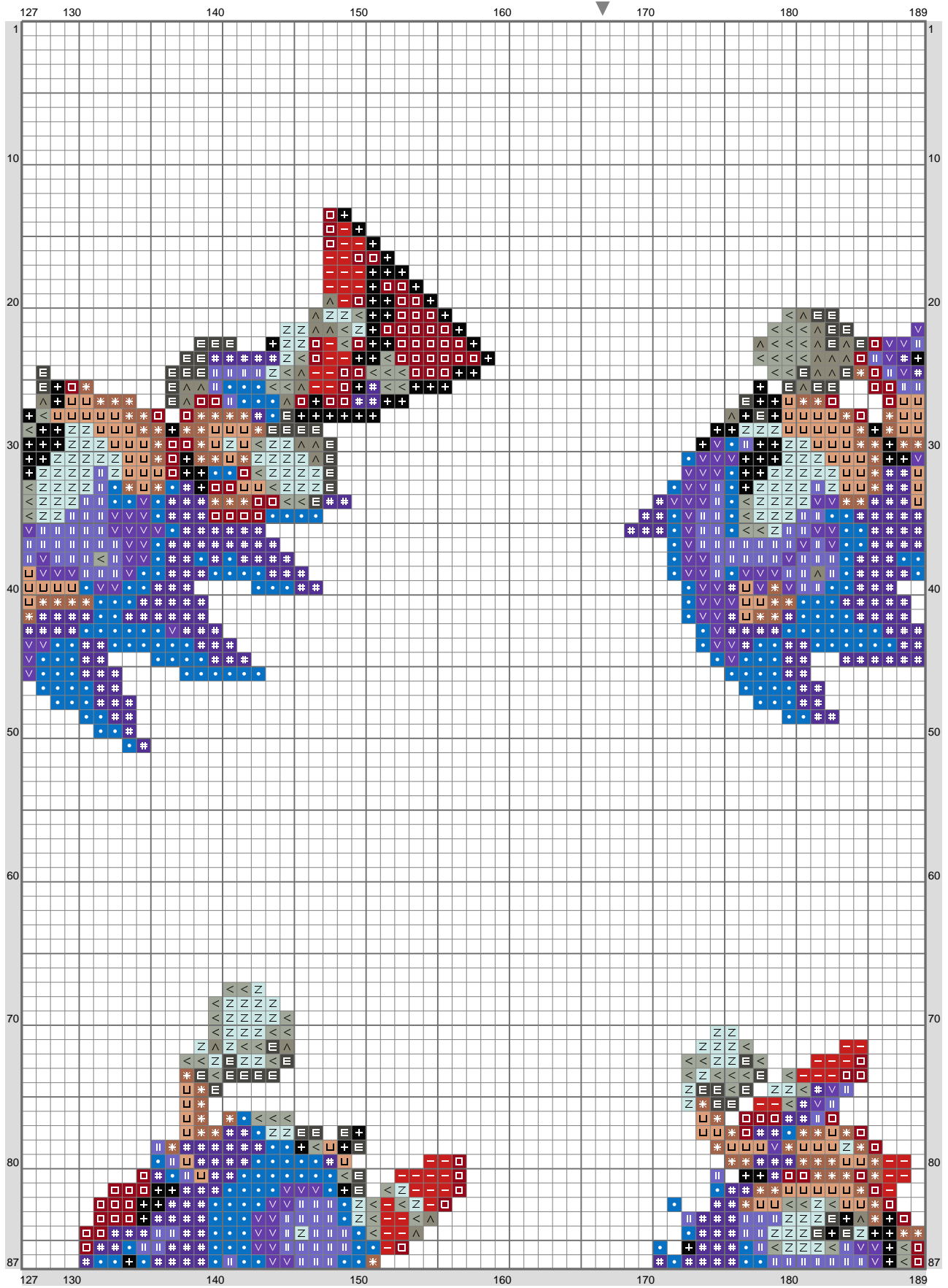
(This chart is printed using KG-Chart LE for Cross Stitch.)

## Sonic 2 - 3



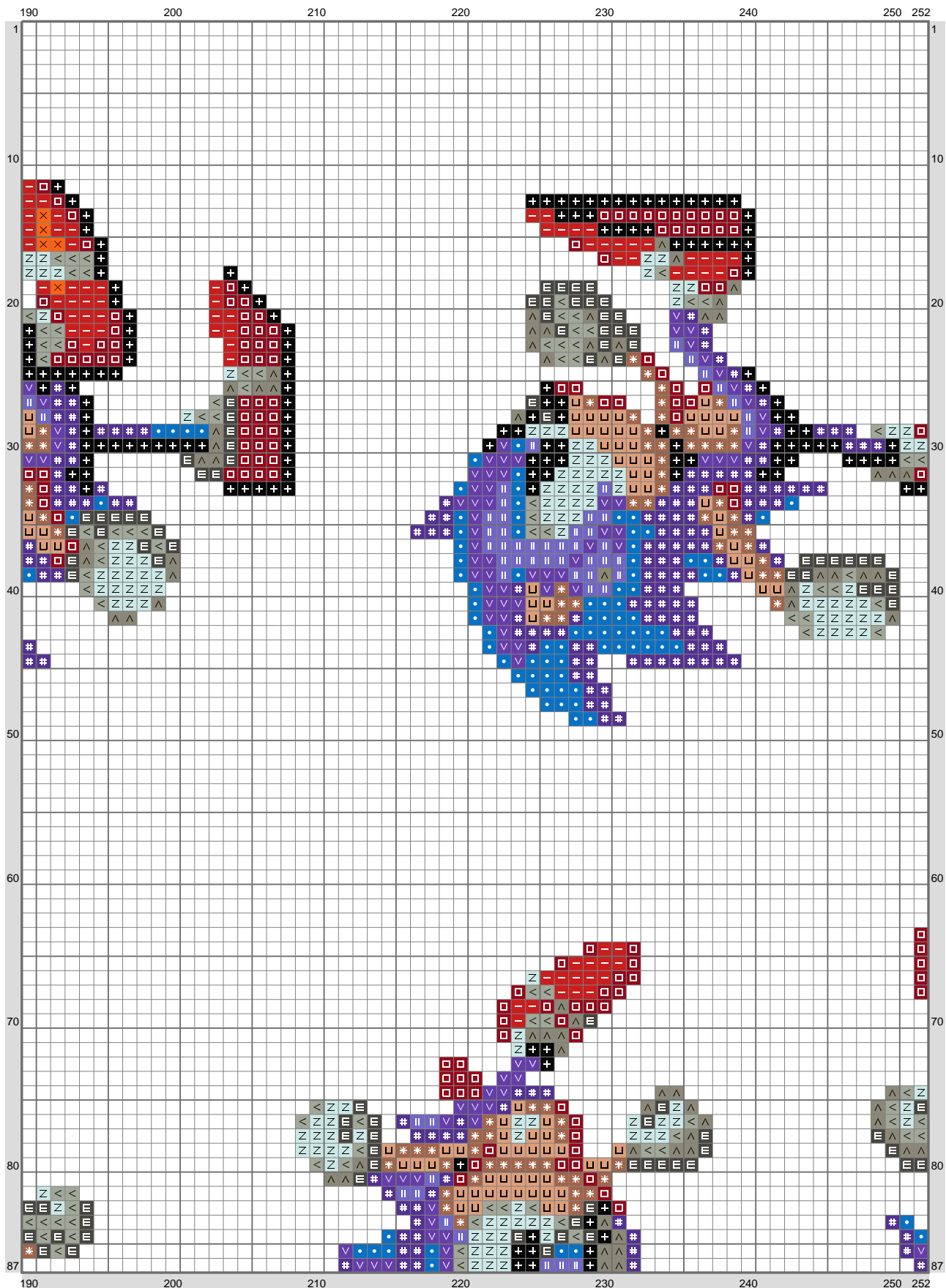
(This chart is printed using KG-Chart LE for Cross Stitch.)

## Sonic 2 - 3



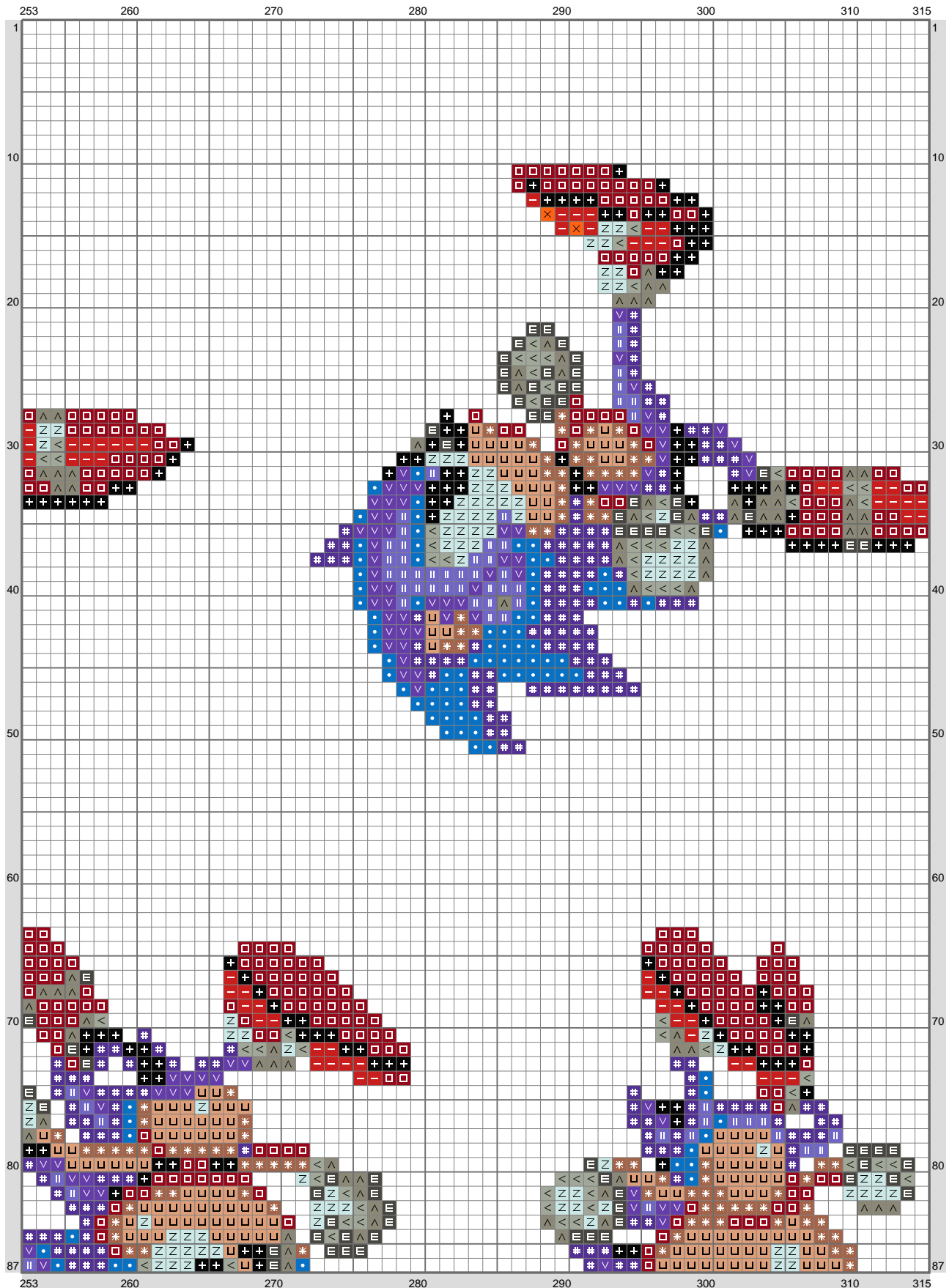
(This chart is printed using KG-Chart LE for Cross Stitch.)

# Sonic 2 - 3



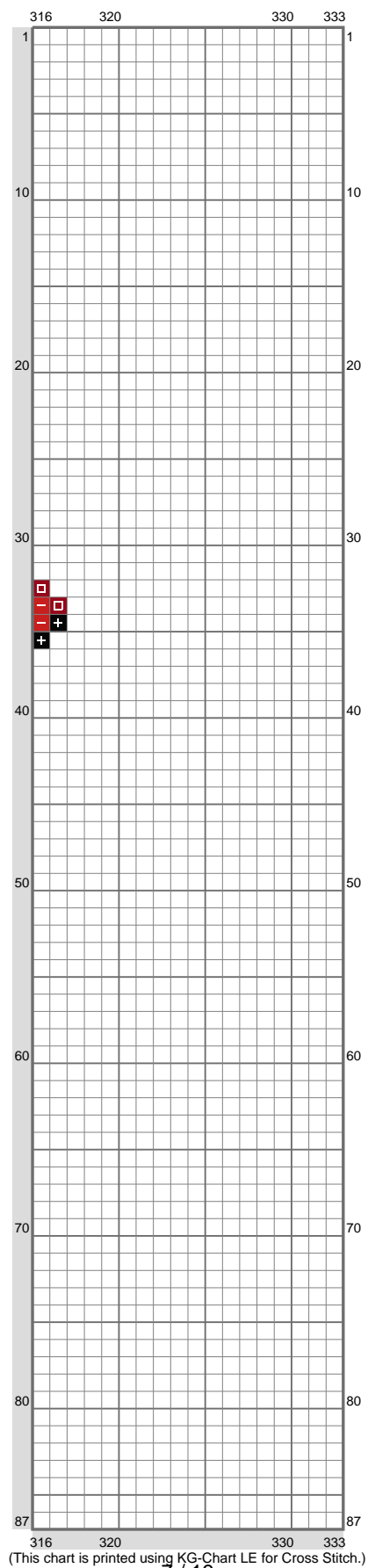
(This chart is printed using KG-Chart LE for Cross Stitch.)

# Sonic 2 - 3

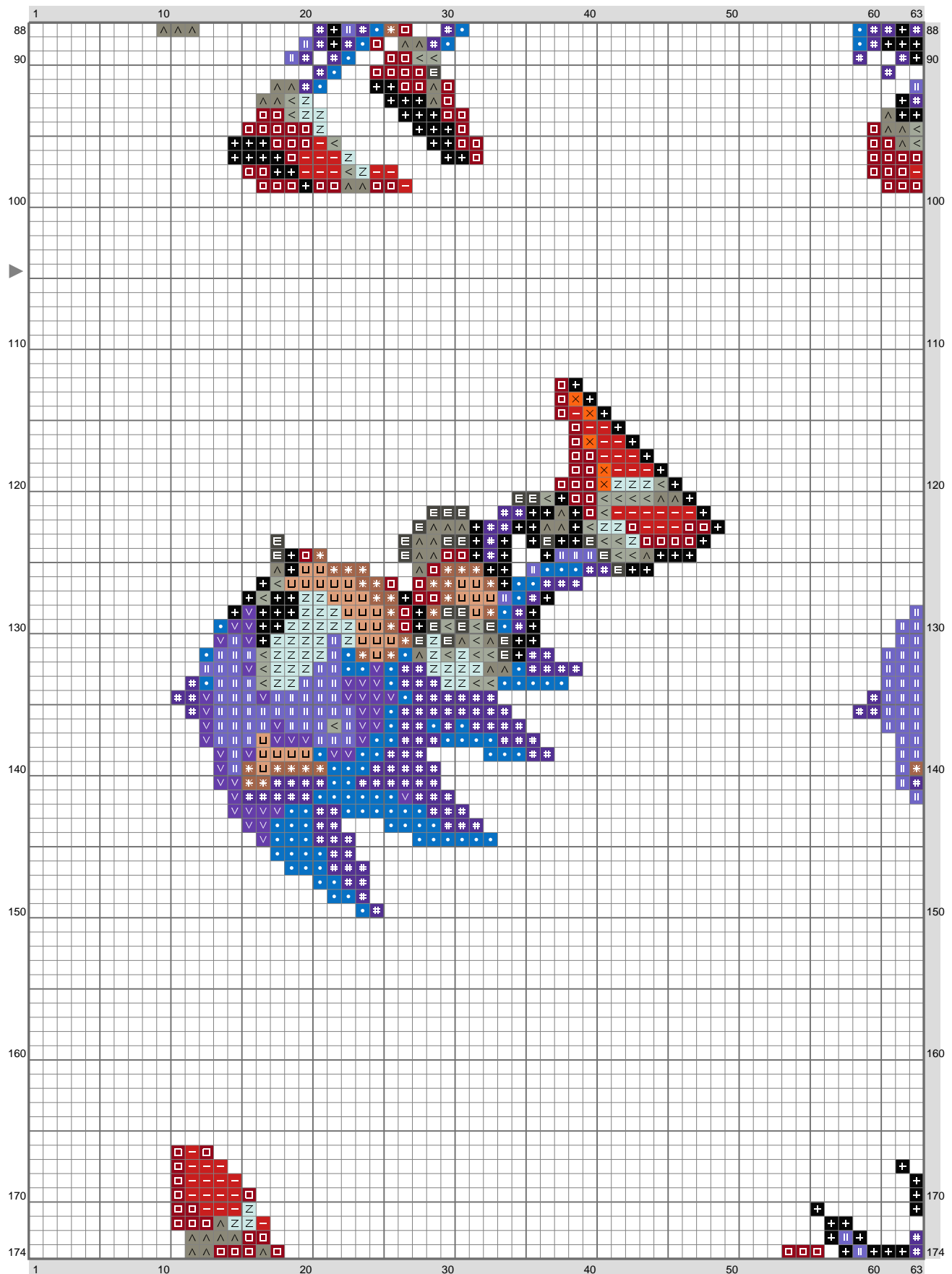


(This chart is printed using KG-Chart LE for Cross Stitch.)

## Sonic 2 - 3



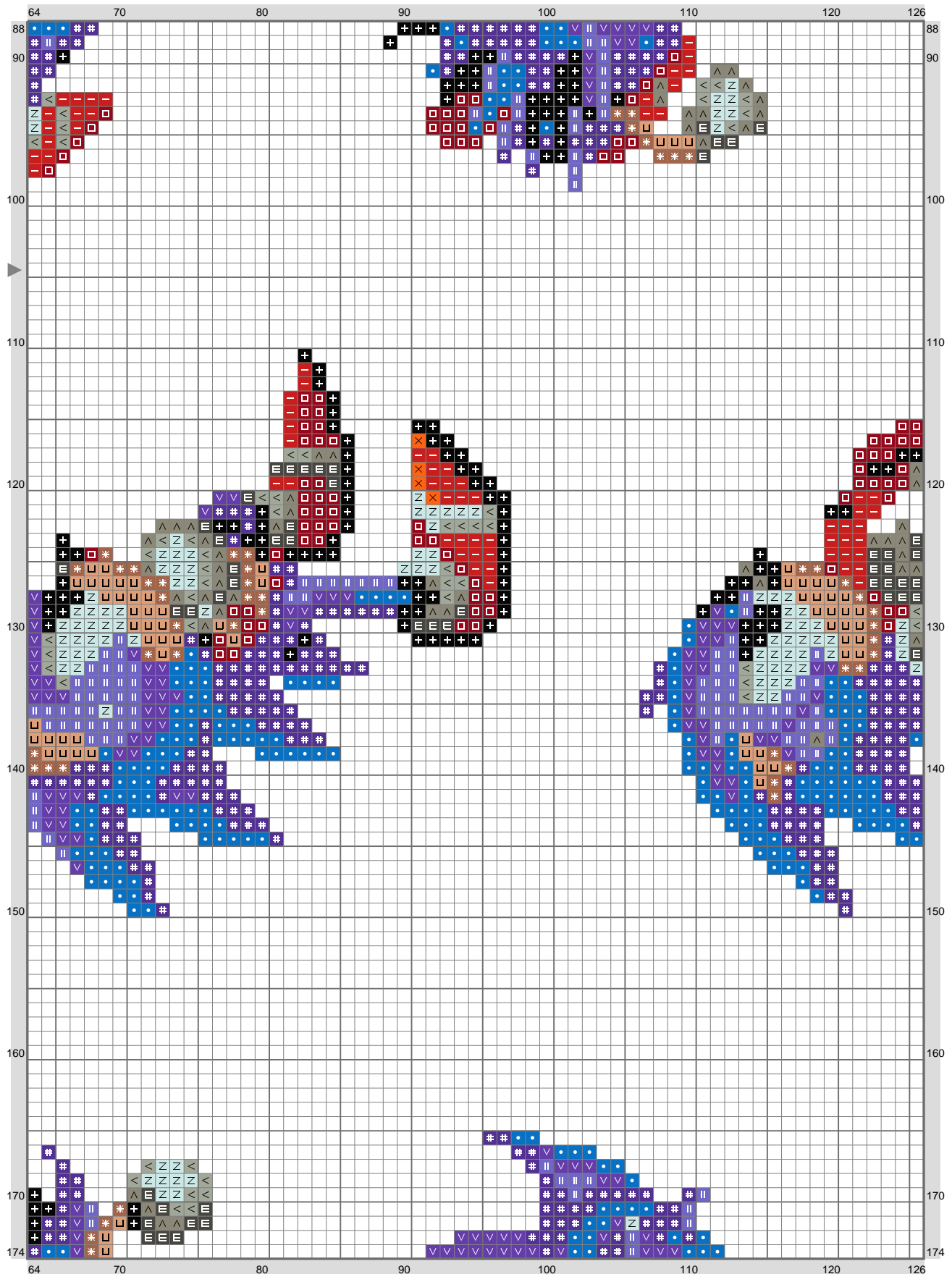
# Sonic 2 - 3



(This chart is printed using KG-Chart LE for Cross Stitch.)

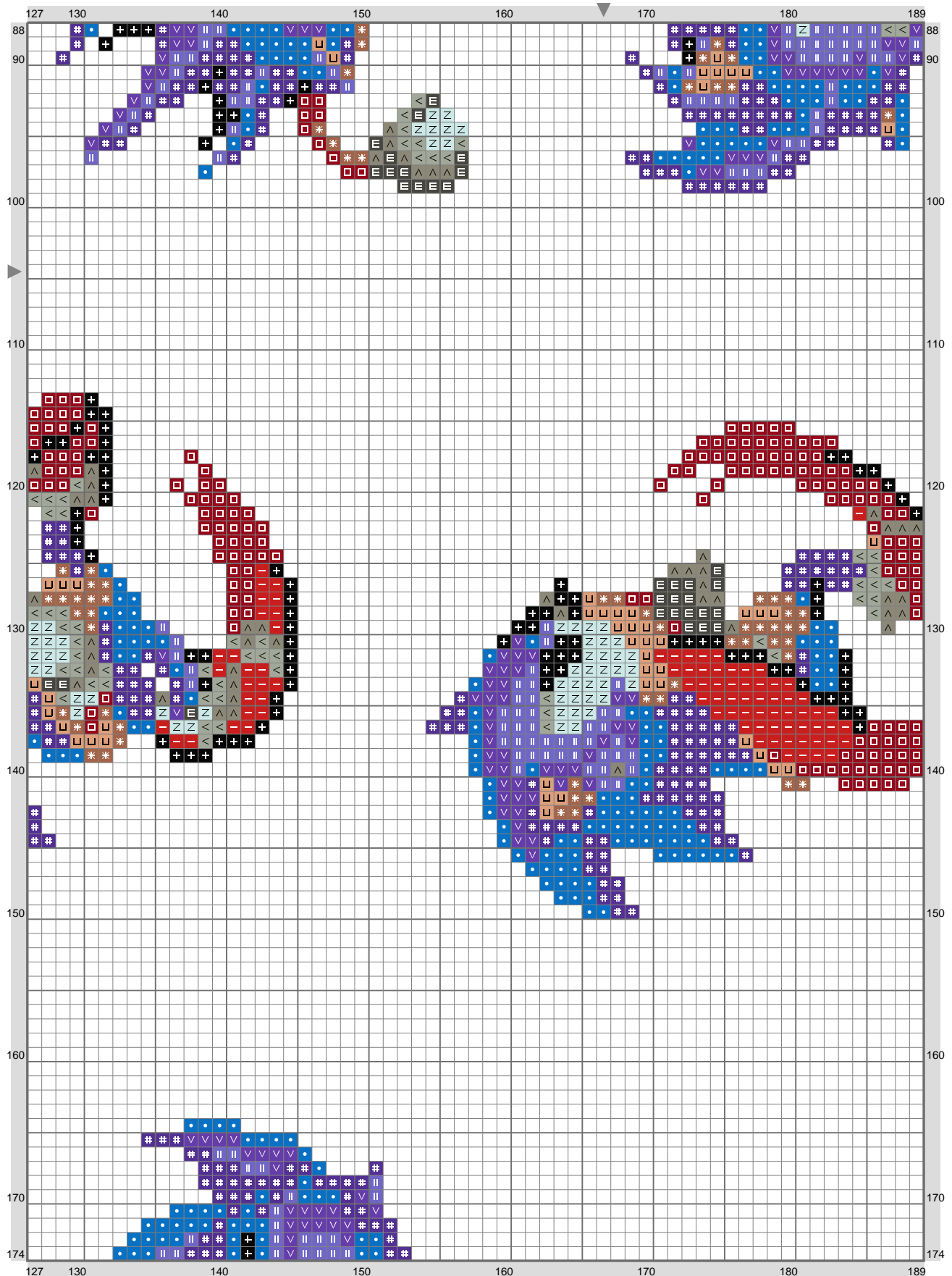


# Sonic 2 - 3



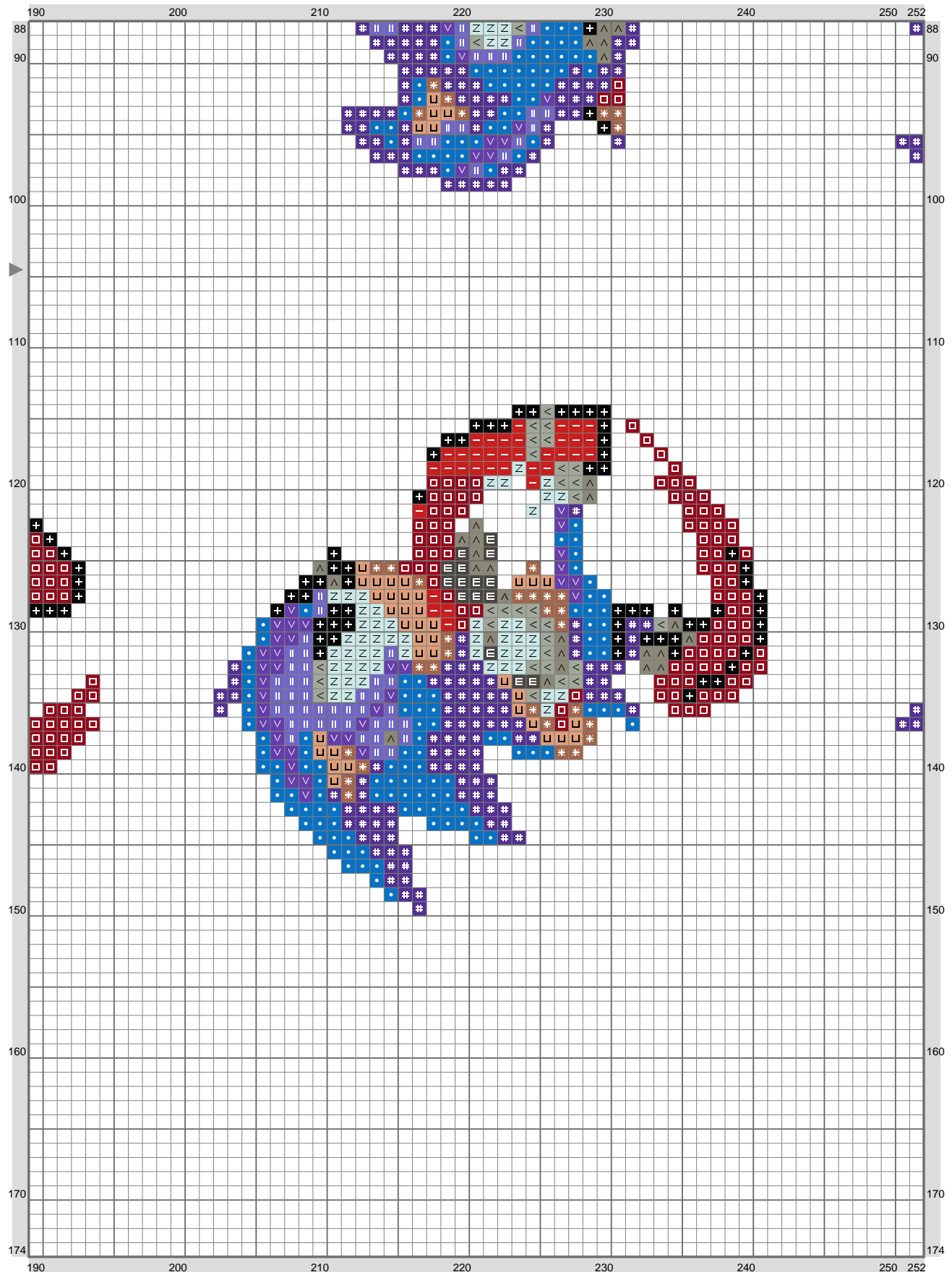
(This chart is printed using KG-Chart LE for Cross Stitch.)

# Sonic 2 - 3



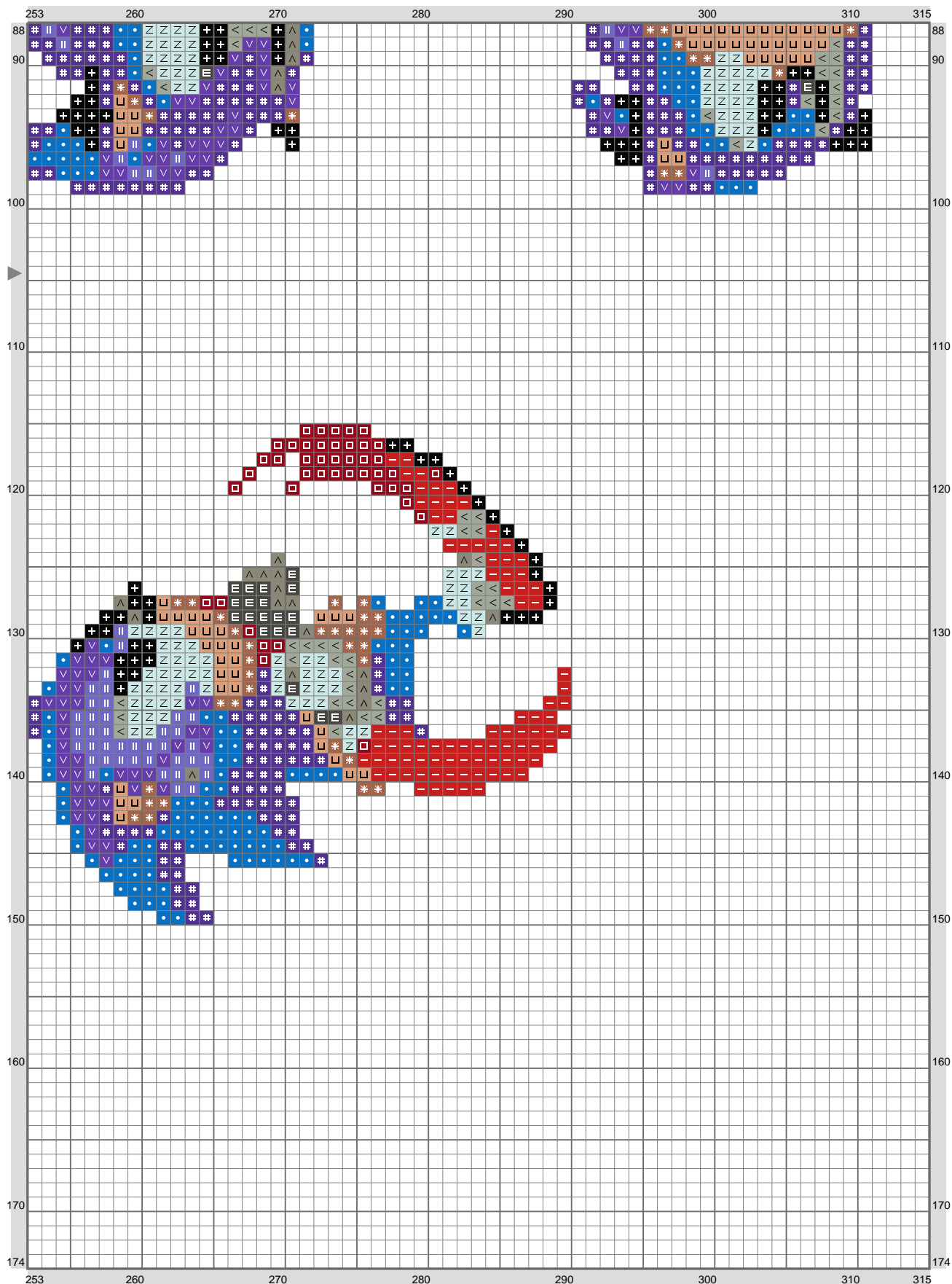
(This chart is printed using KG-Chart LE for Cross Stitch.)

# Sonic 2 - 3



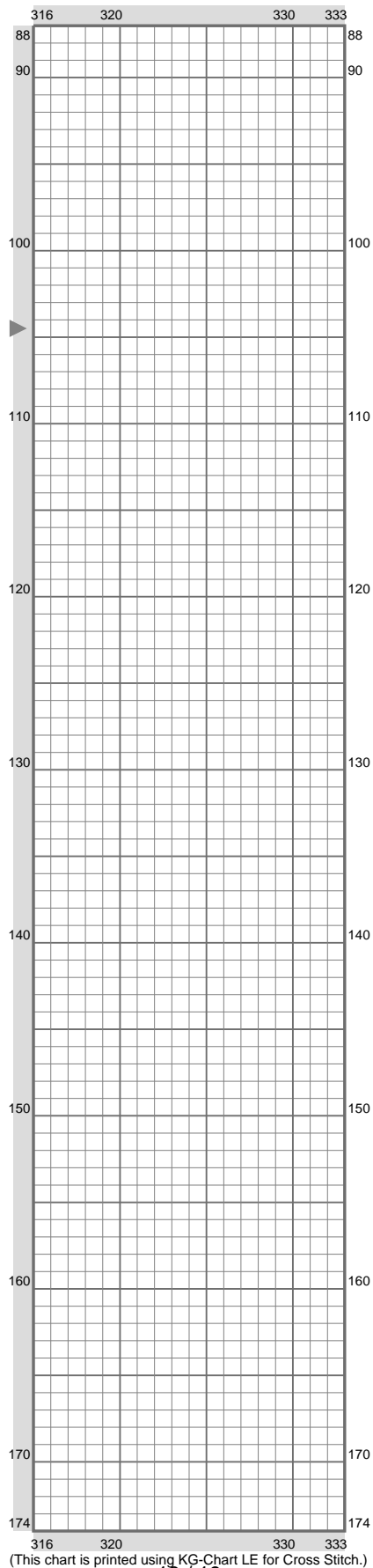
(This chart is printed using KG-Chart LE for Cross Stitch.)

# Sonic 2 - 3

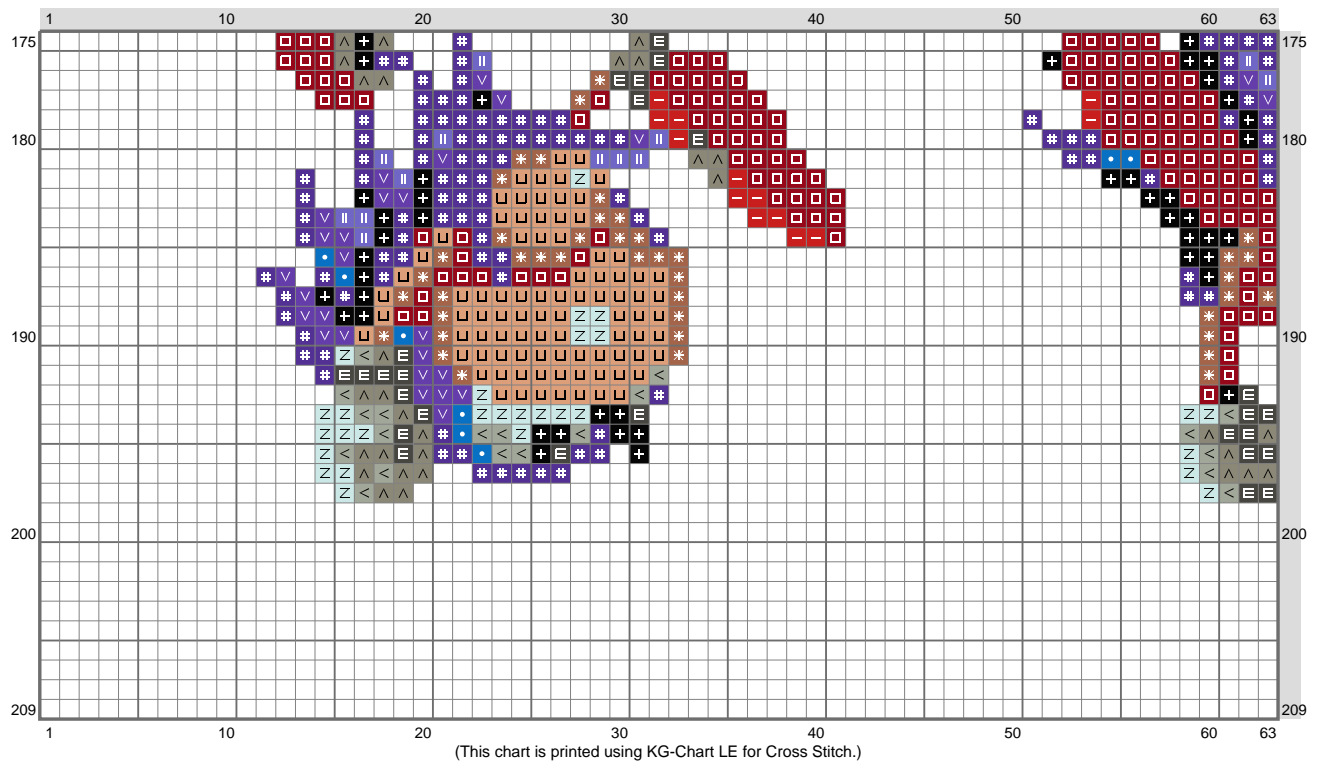


(This chart is printed using KG-Chart LE for Cross Stitch.)

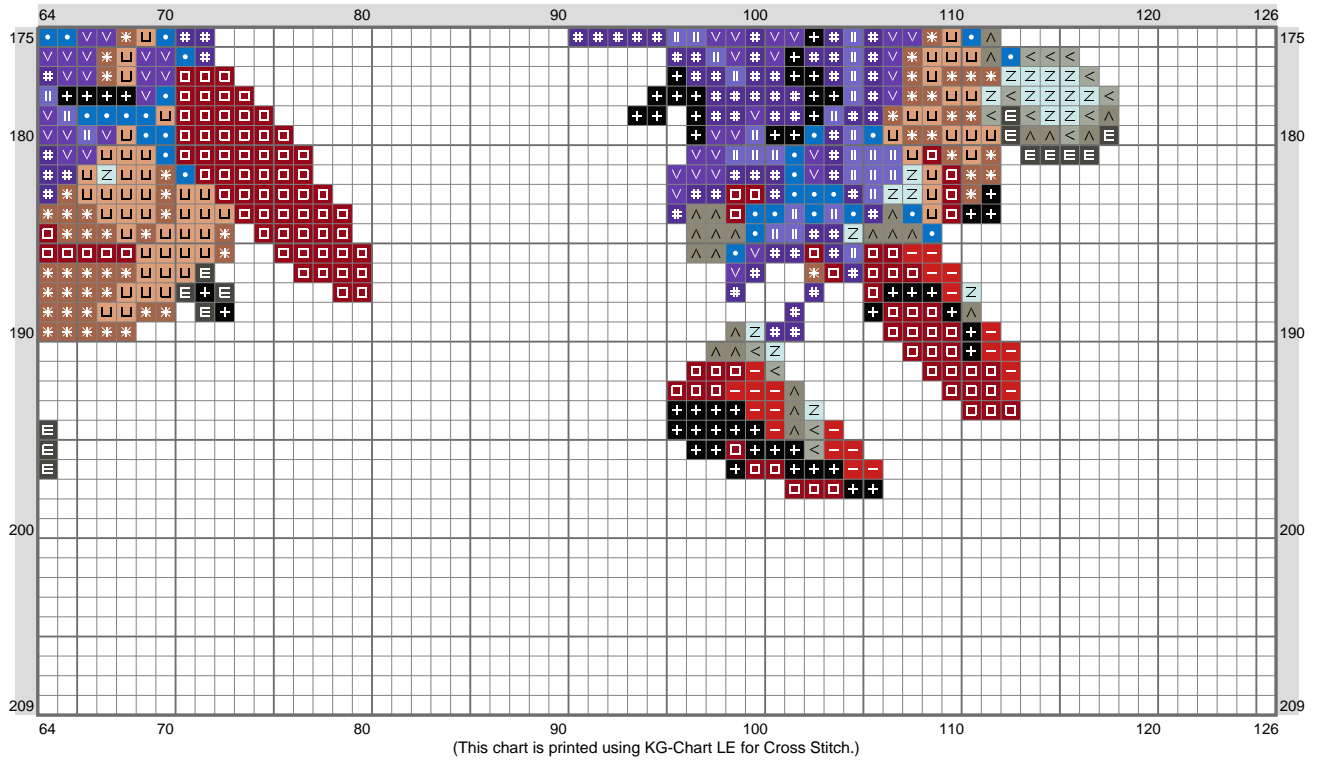
# Sonic 2 - 3



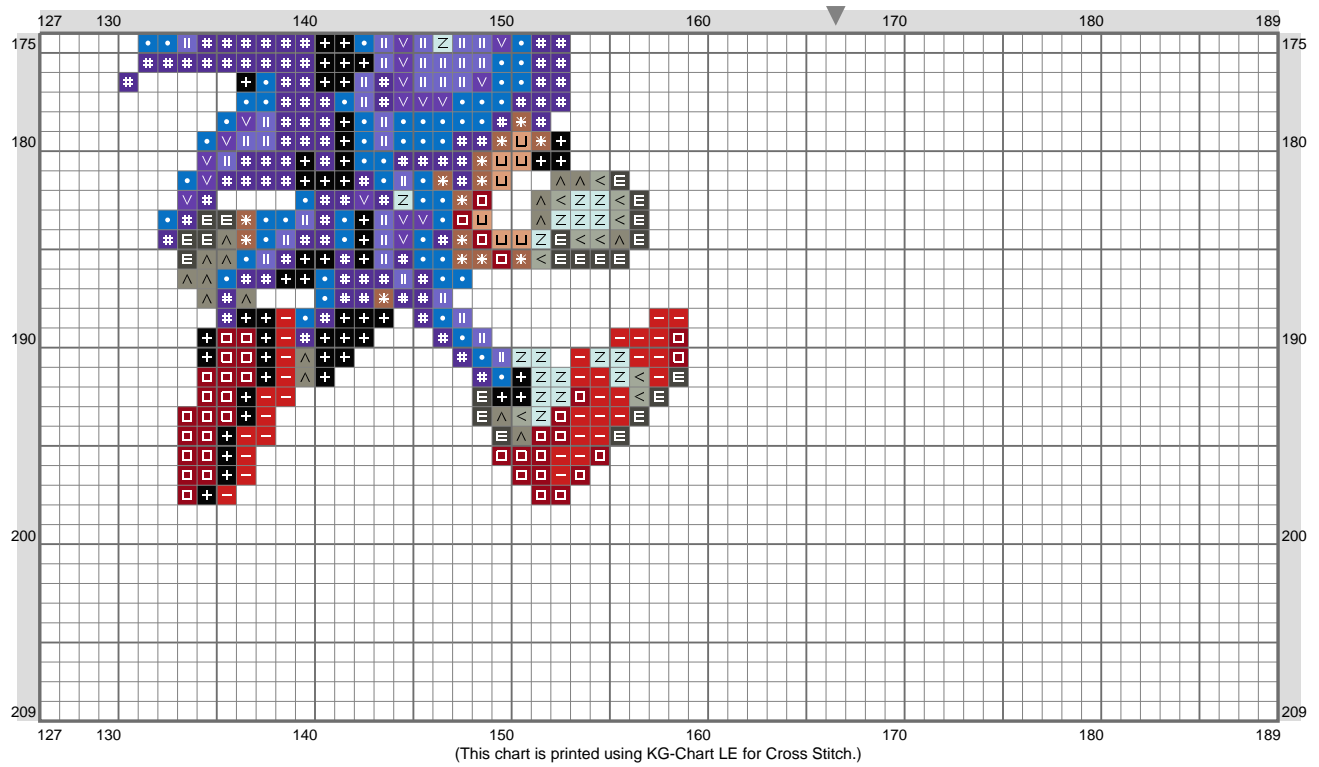
# Sonic 2 - 3



# Sonic 2 - 3

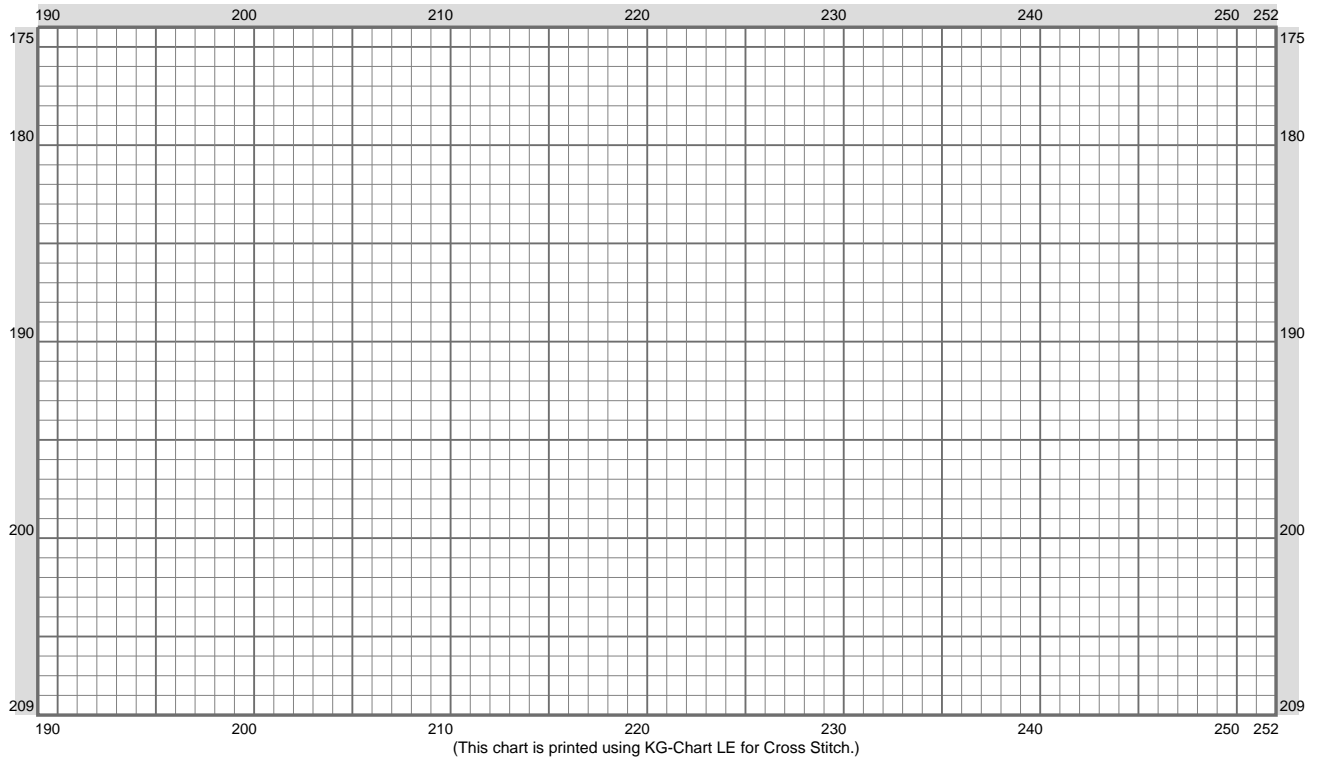


## Sonic 2 - 3

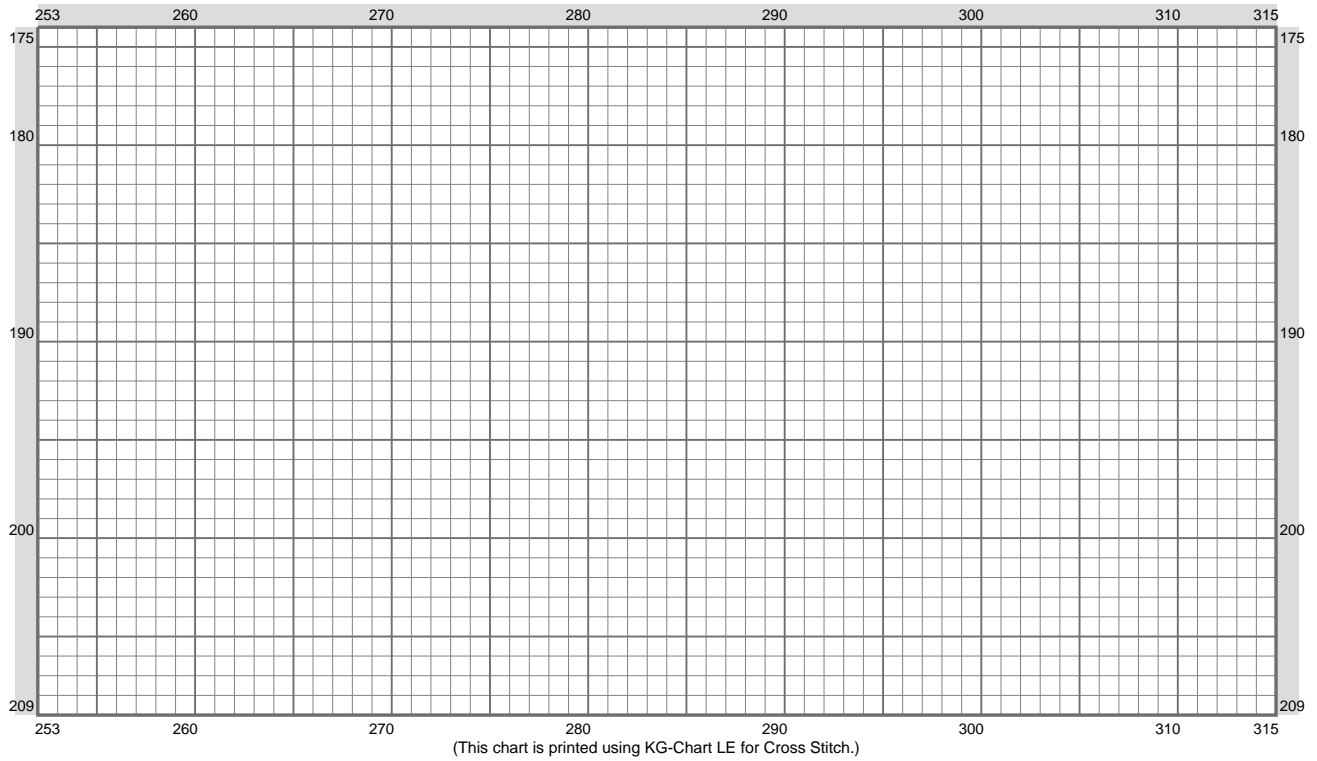




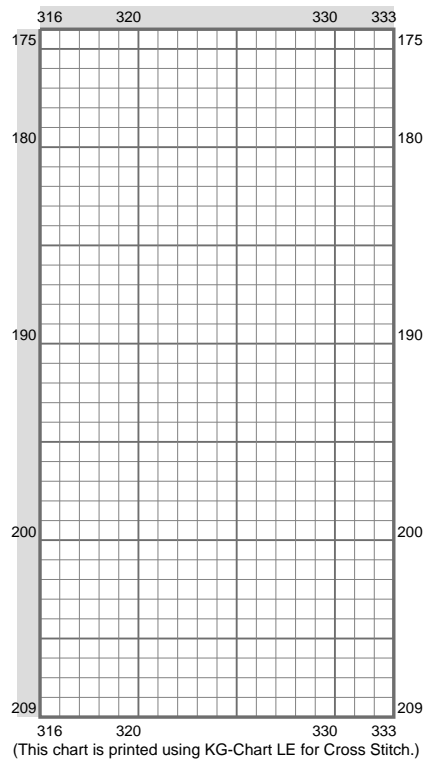
## Sonic 2 - 3



## Sonic 2 - 3



## Sonic 2 - 3



Stitch Count: 333w x 209h

Finished Size: 46.99 cm x 29.49 cm (18 ct./inch)

Cloth: Aida

Cloth's Color: White

# of colors: 14 Colors

### Color Table (DMC)

#### Cross Stitch

	310	(1271 ct)
	3021	(501 ct)
	498	(1470 ct)
	817	(632 ct)
	740	(30 ct)
	434	(703 ct)
	796	(2444 ct)
	3843	(1727 ct)
	797	(973 ct)
	640	(537 ct)
	3838	(1067 ct)
	3022	(580 ct)
	436	(840 ct)
	828	(884 ct)