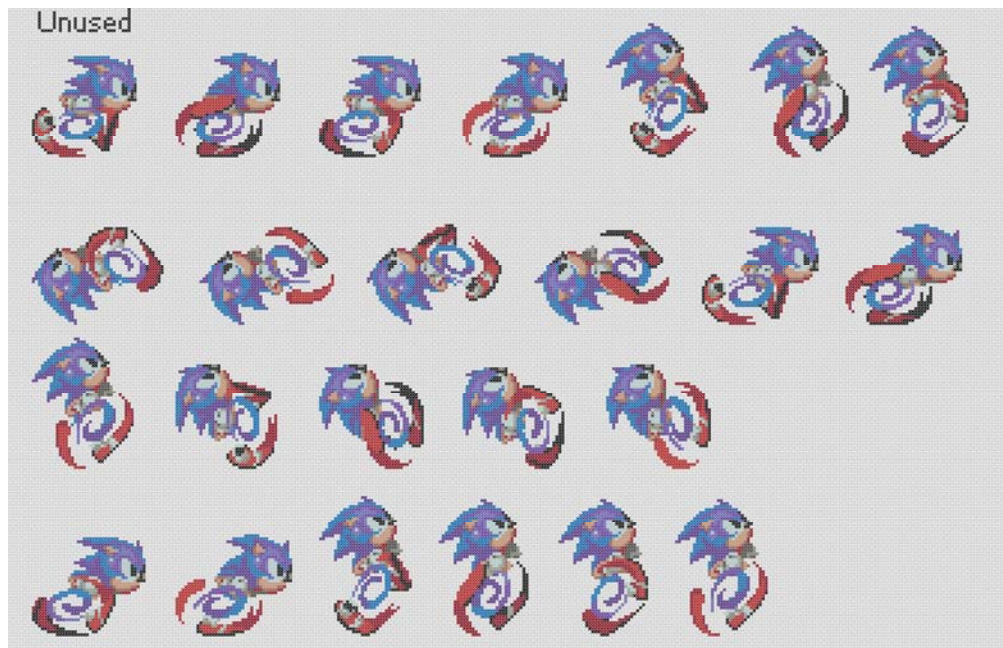
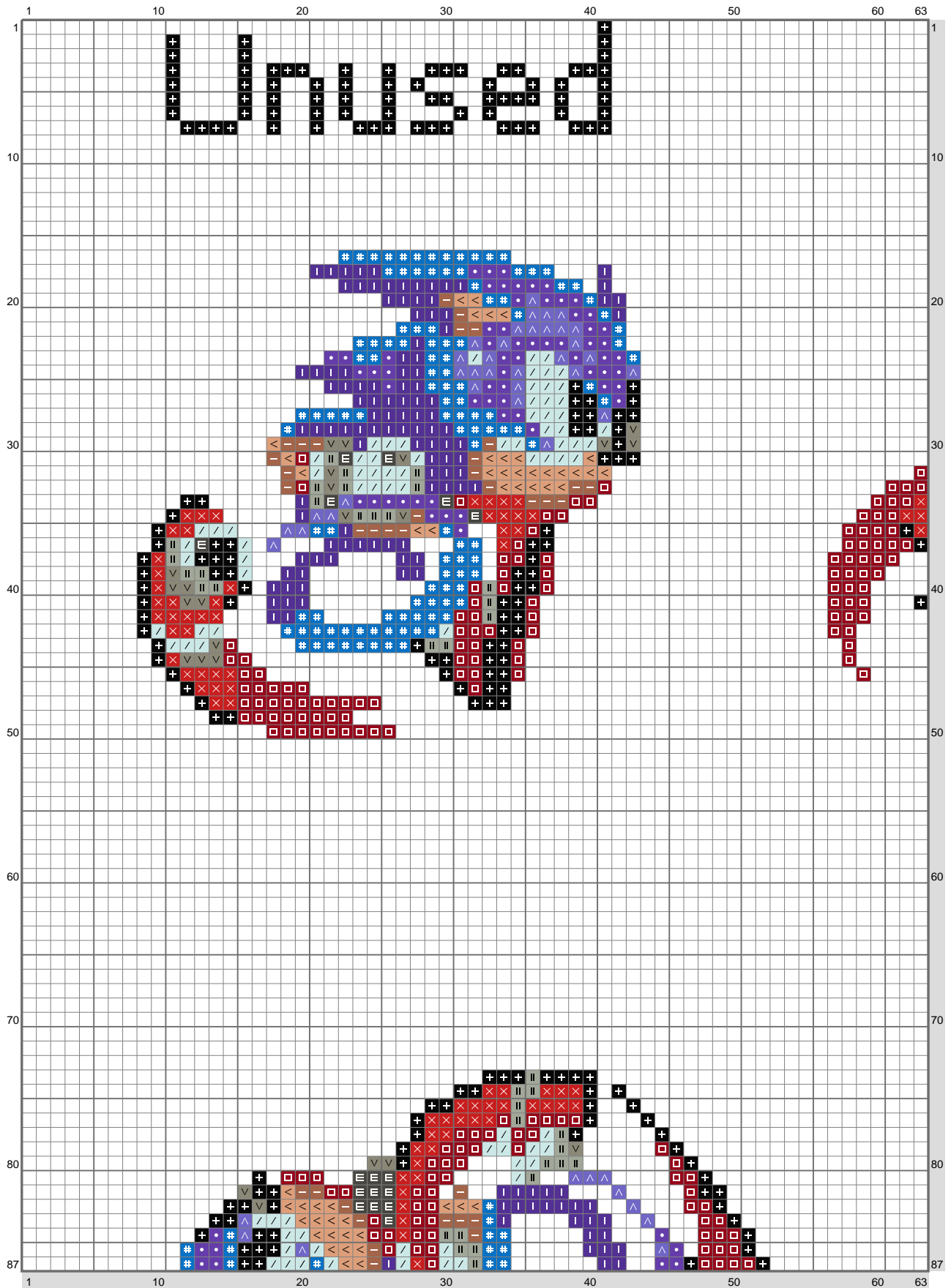


Sonic 2 - 7

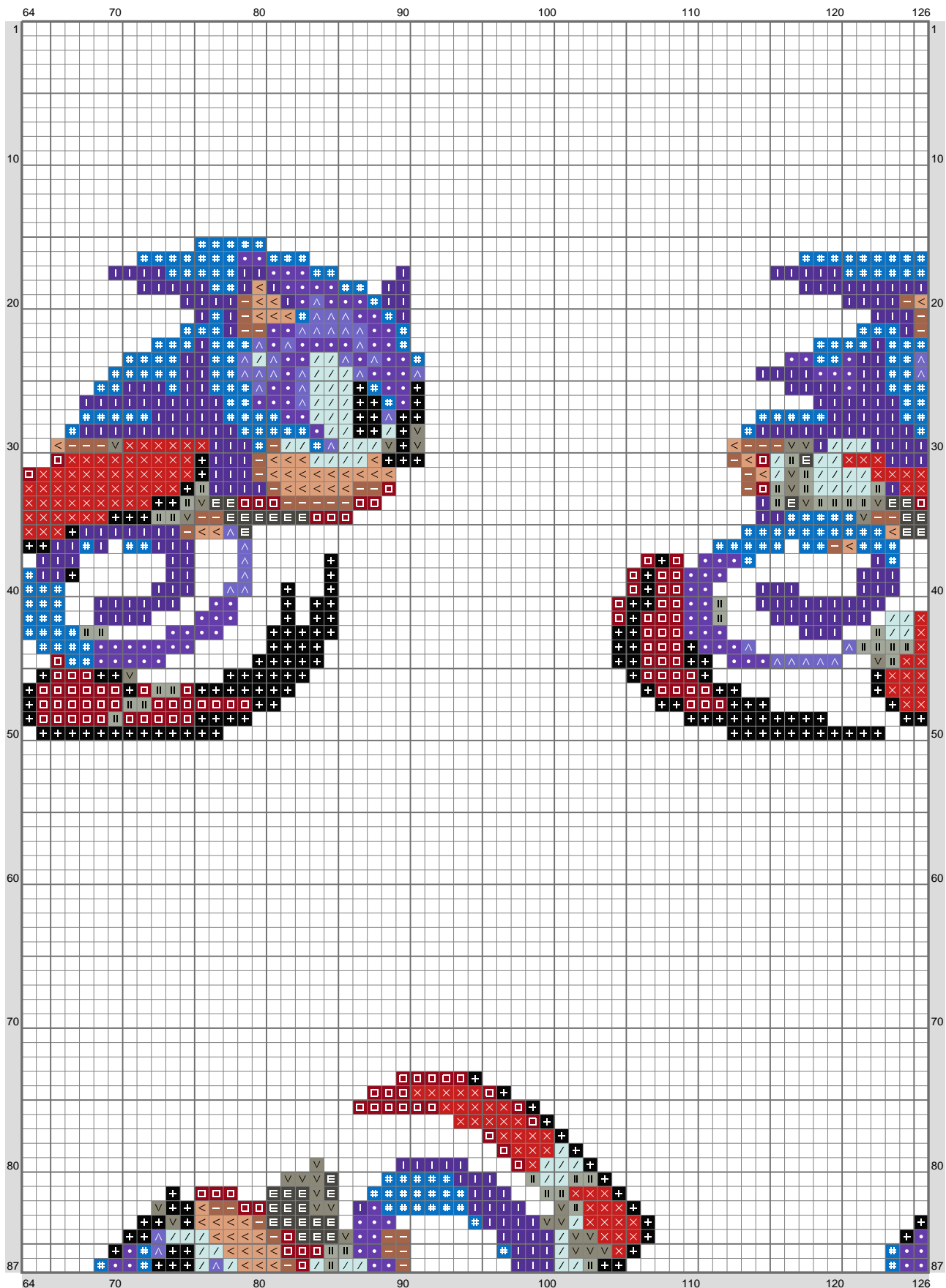


Sonic 2 - 7



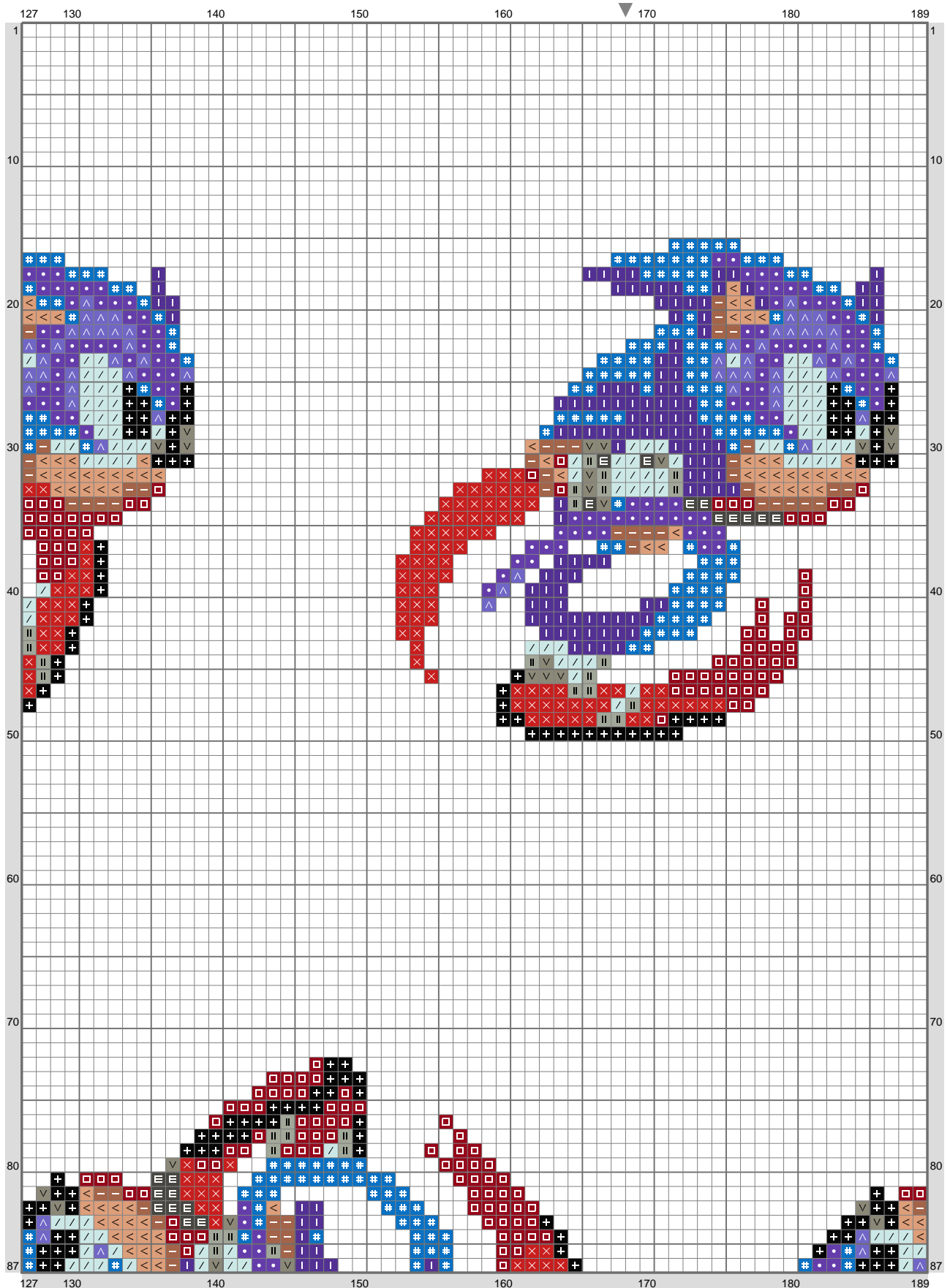
(This chart is printed using KG-Chart LE for Cross Stitch.)

Sonic 2 - 7



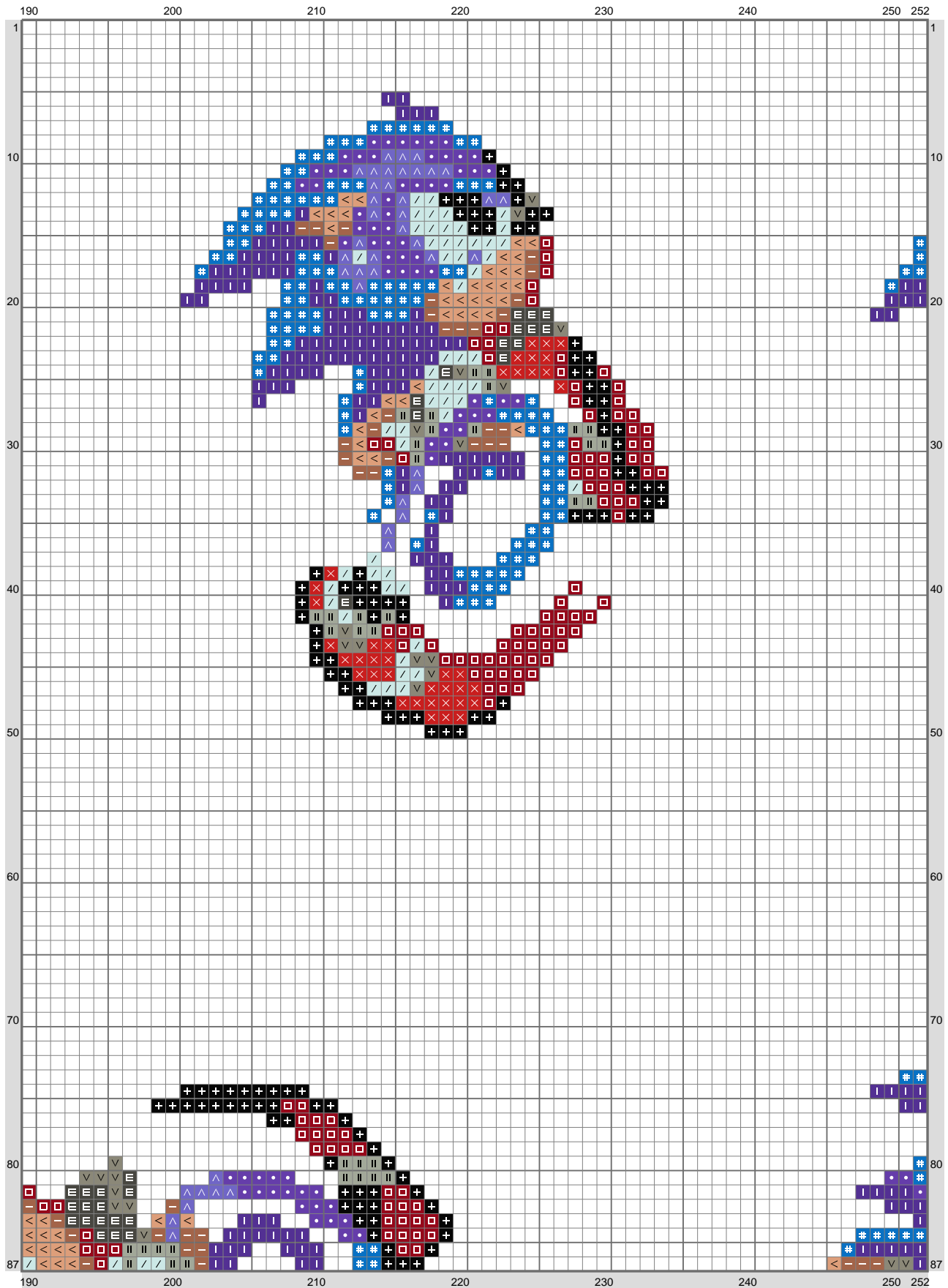
(This chart is printed using KG-Chart LE for Cross Stitch.)

Sonic 2 - 7



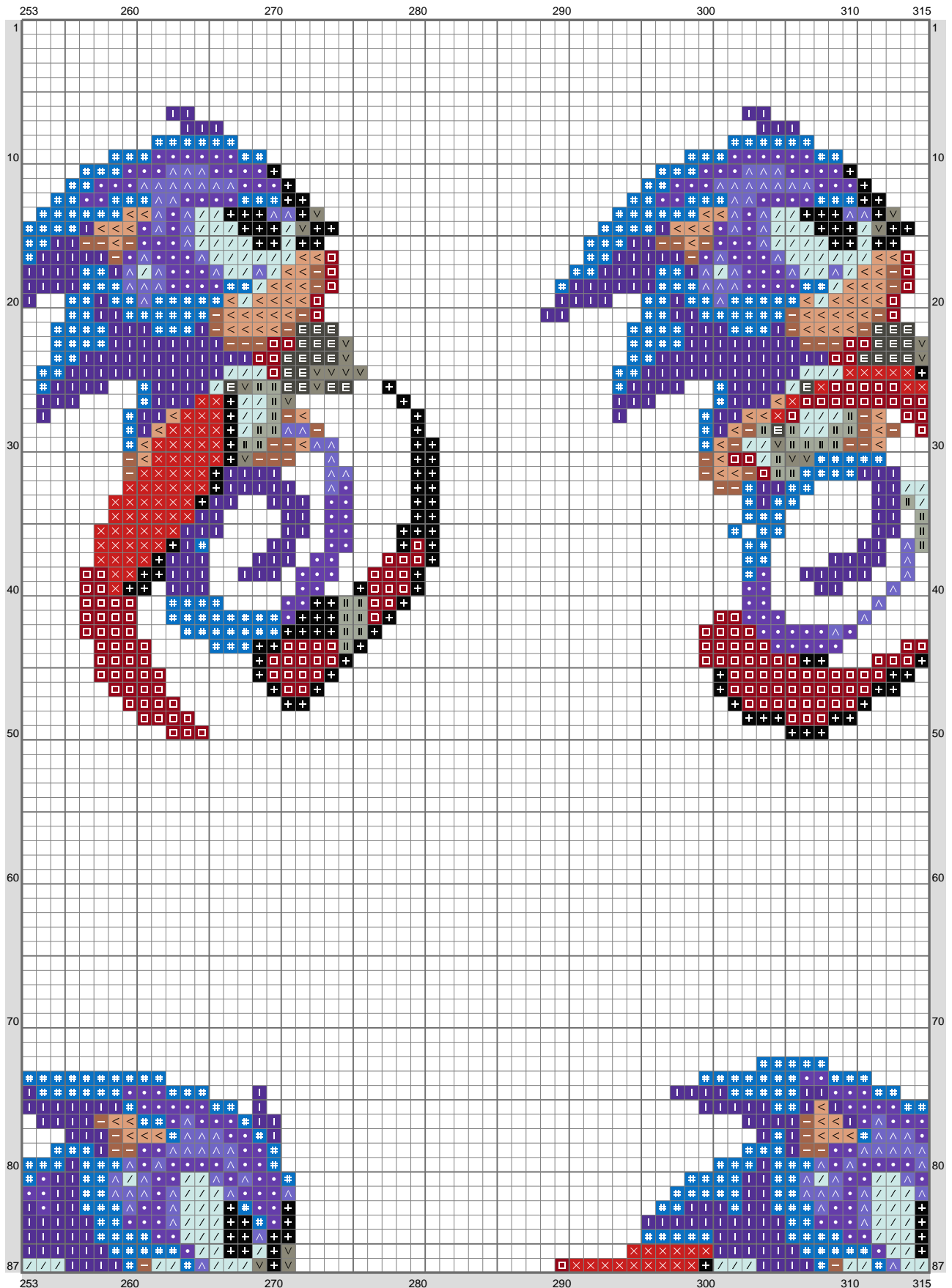
(This chart is printed using KG-Chart LE for Cross Stitch.)

Sonic 2 - 7



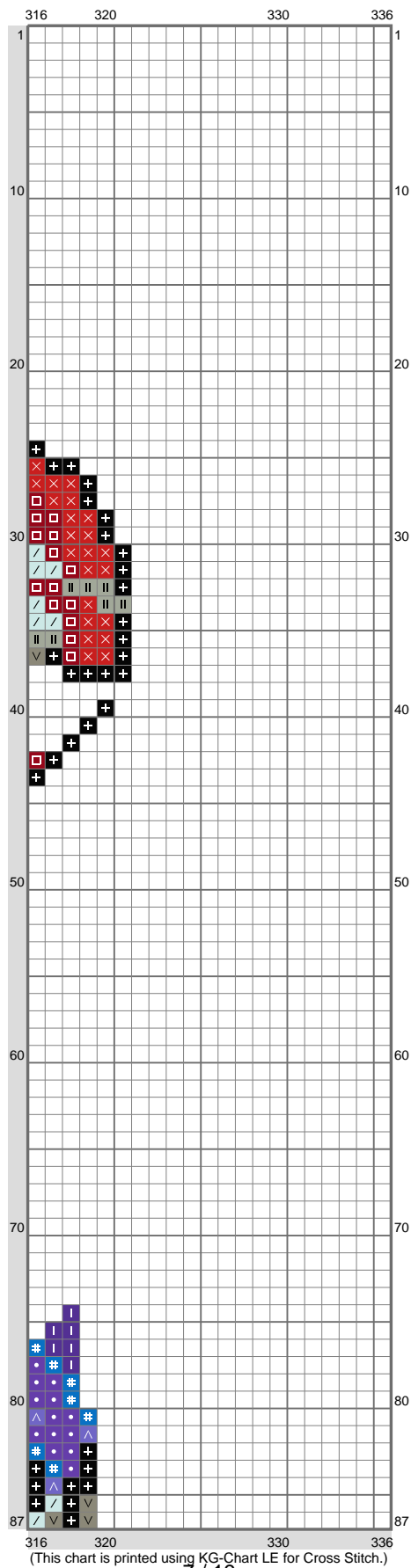
(This chart is printed using KG-Chart LE for Cross Stitch.)

Sonic 2 - 7

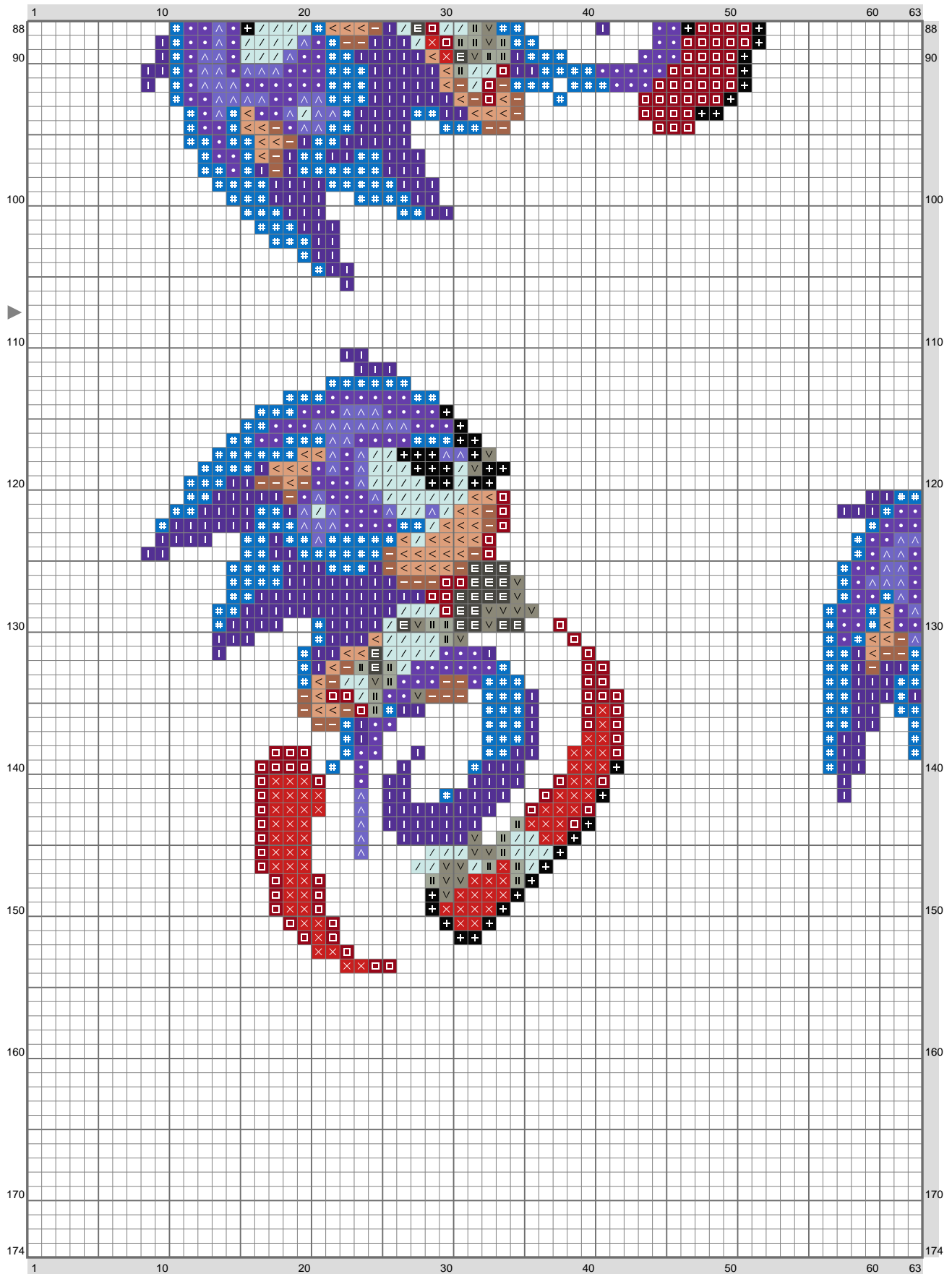


(This chart is printed using KG-Chart LE for Cross Stitch.)

Sonic 2 - 7



Sonic 2 - 7



(This chart is printed using KG-Chart LE for Cross Stitch.)

Sonic 2 - 7



(This chart is printed using KG-Chart LE for Cross Stitch.)

Sonic 2 - 7



(This chart is printed using KG-Chart LE for Cross Stitch.)

Sonic 2 - 7



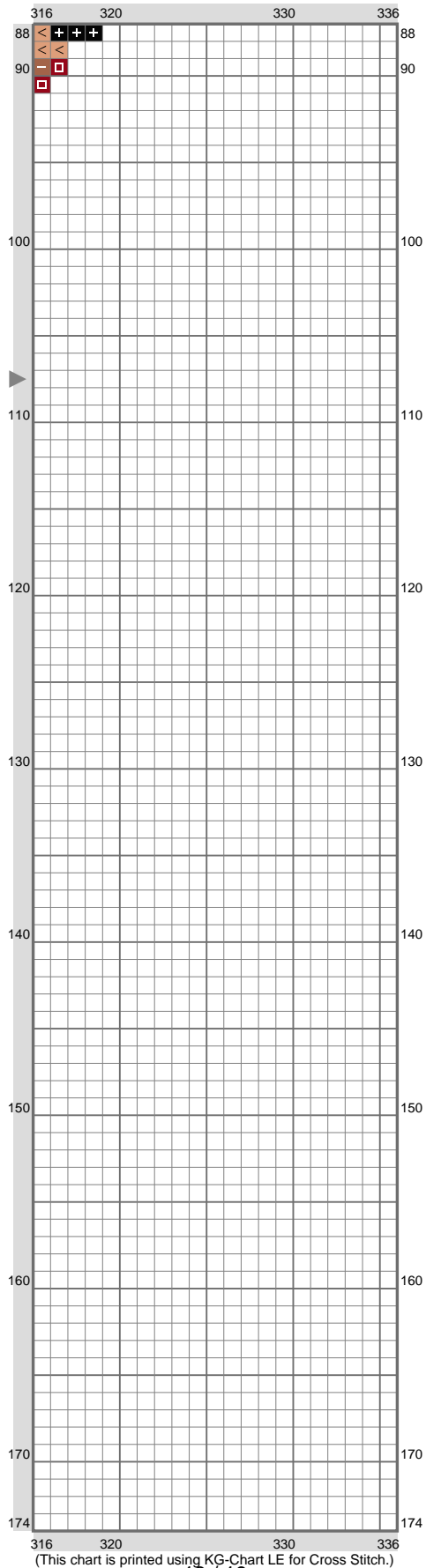
(This chart is printed using KG-Chart LE for Cross Stitch.)

Sonic 2 - 7



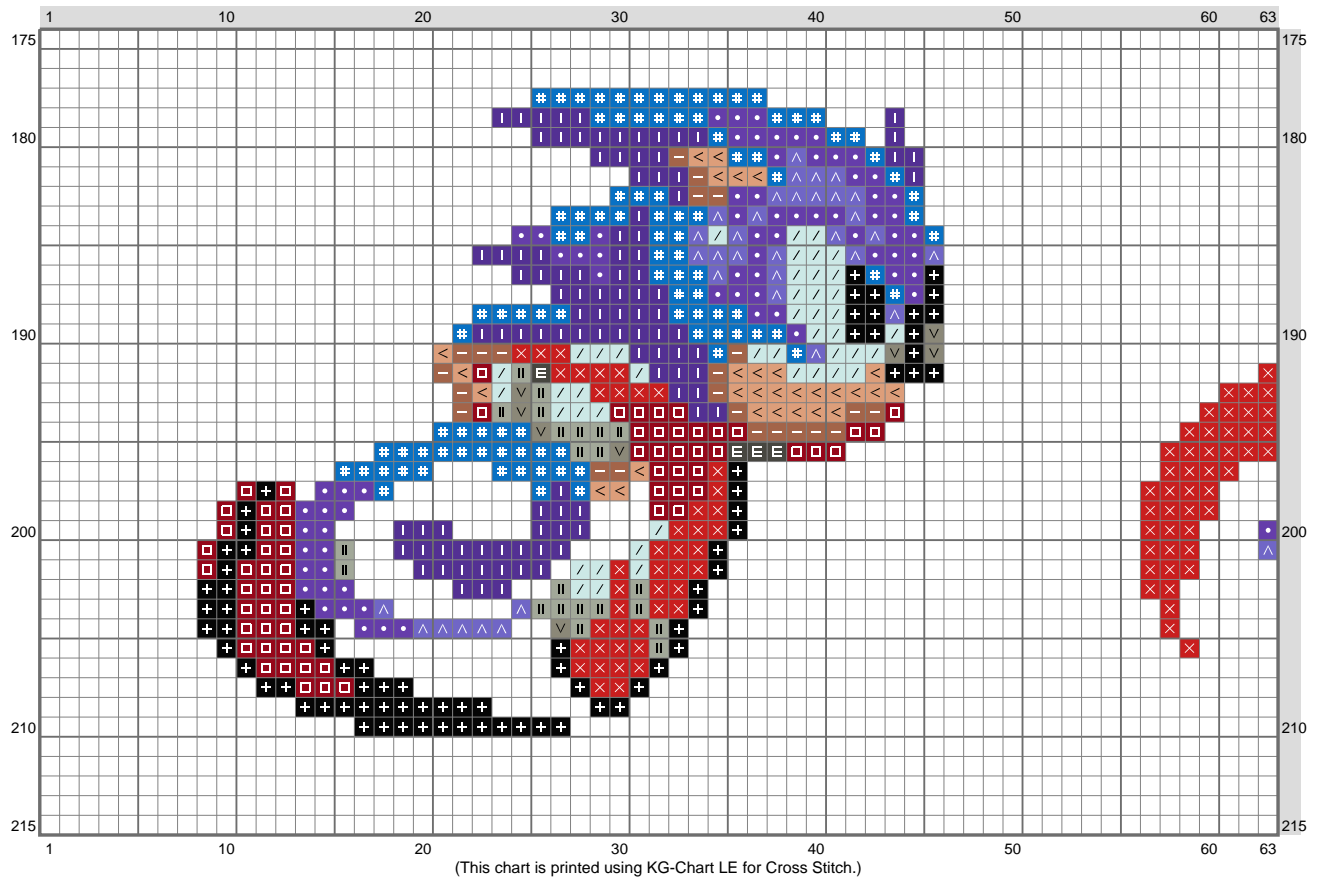
(This chart is printed using KG-Chart LE for Cross Stitch.)

Sonic 2 - 7

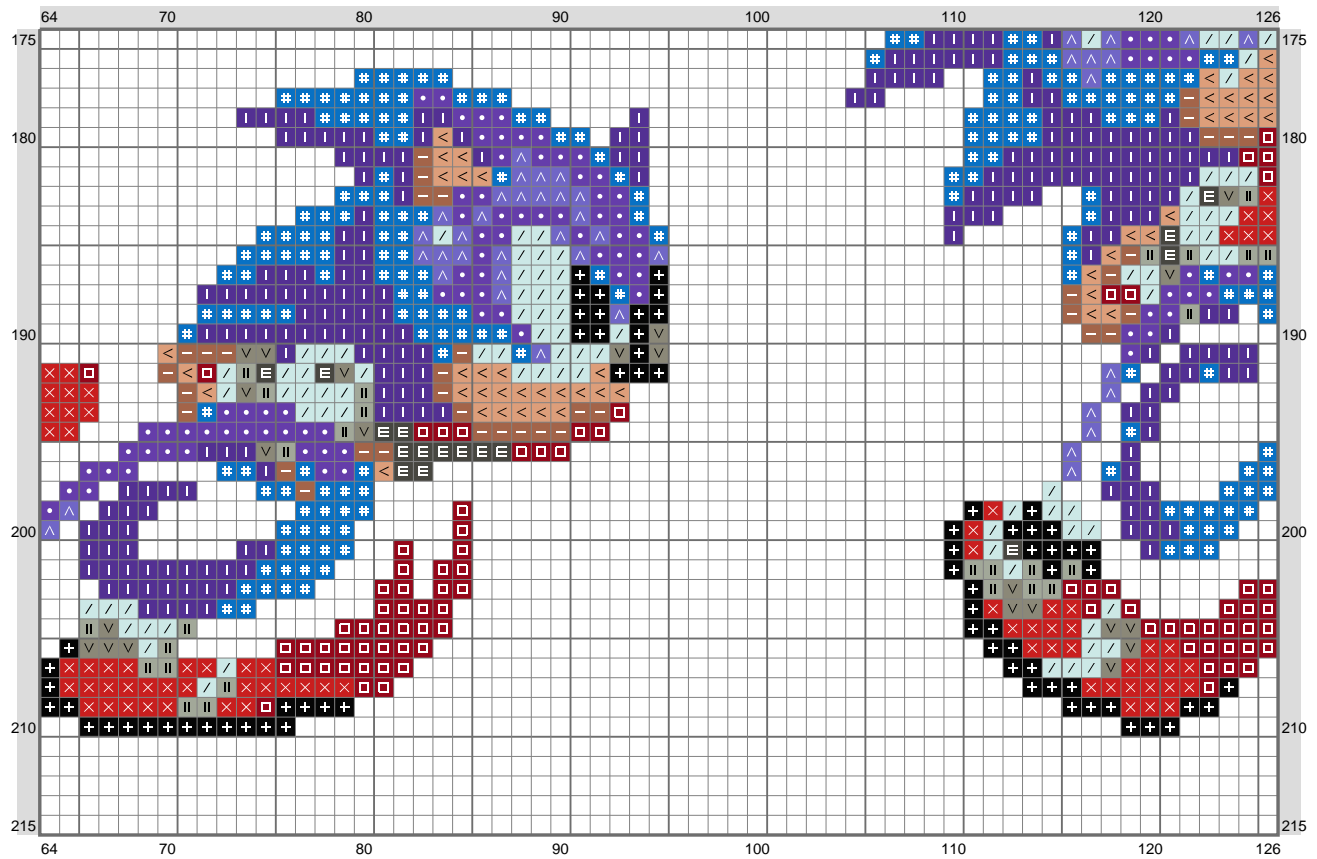


(This chart is printed using KG-Chart LE for Cross Stitch.)

Sonic 2 - 7

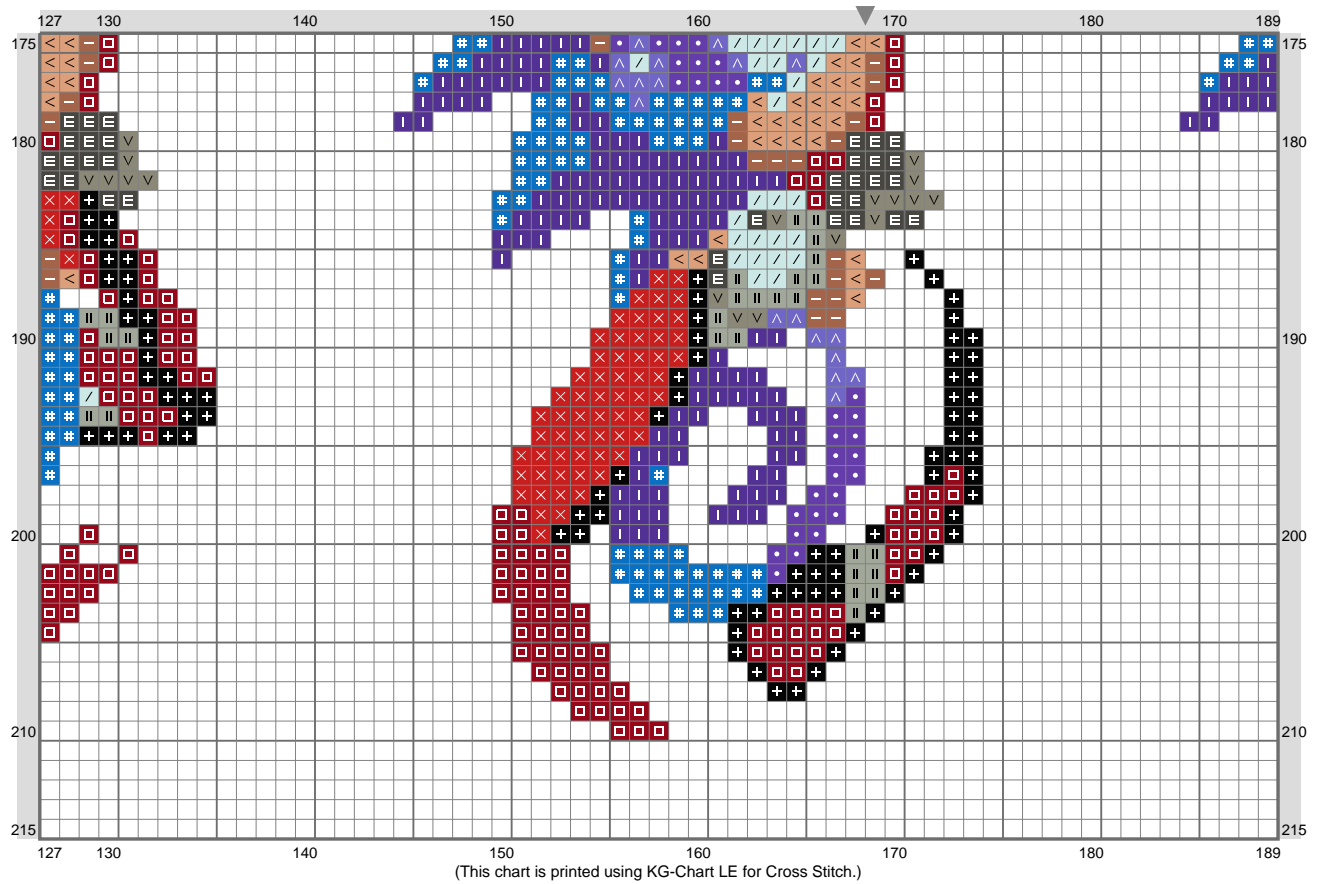


Sonic 2 - 7

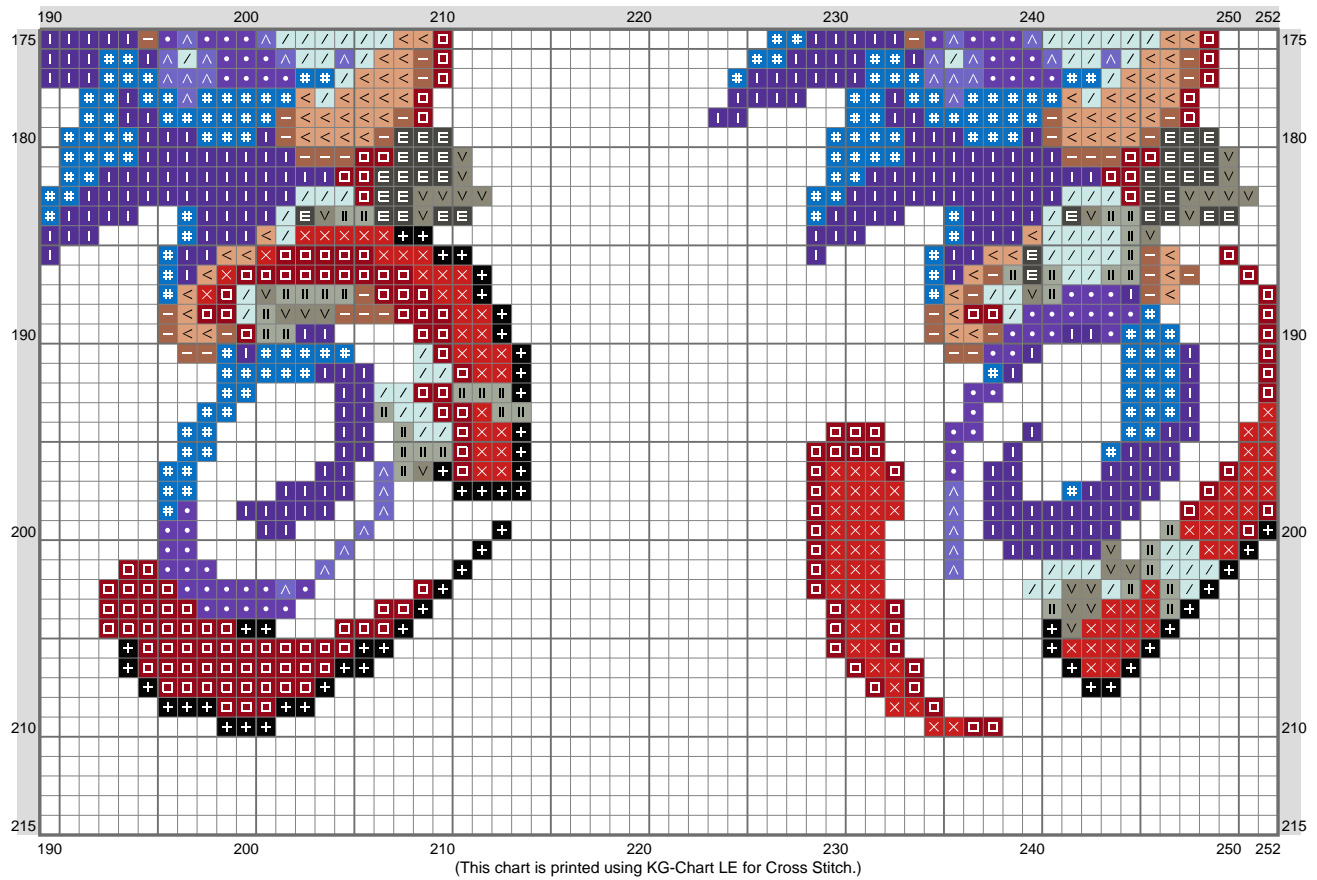


(This chart is printed using KG-Chart LE for Cross Stitch.)

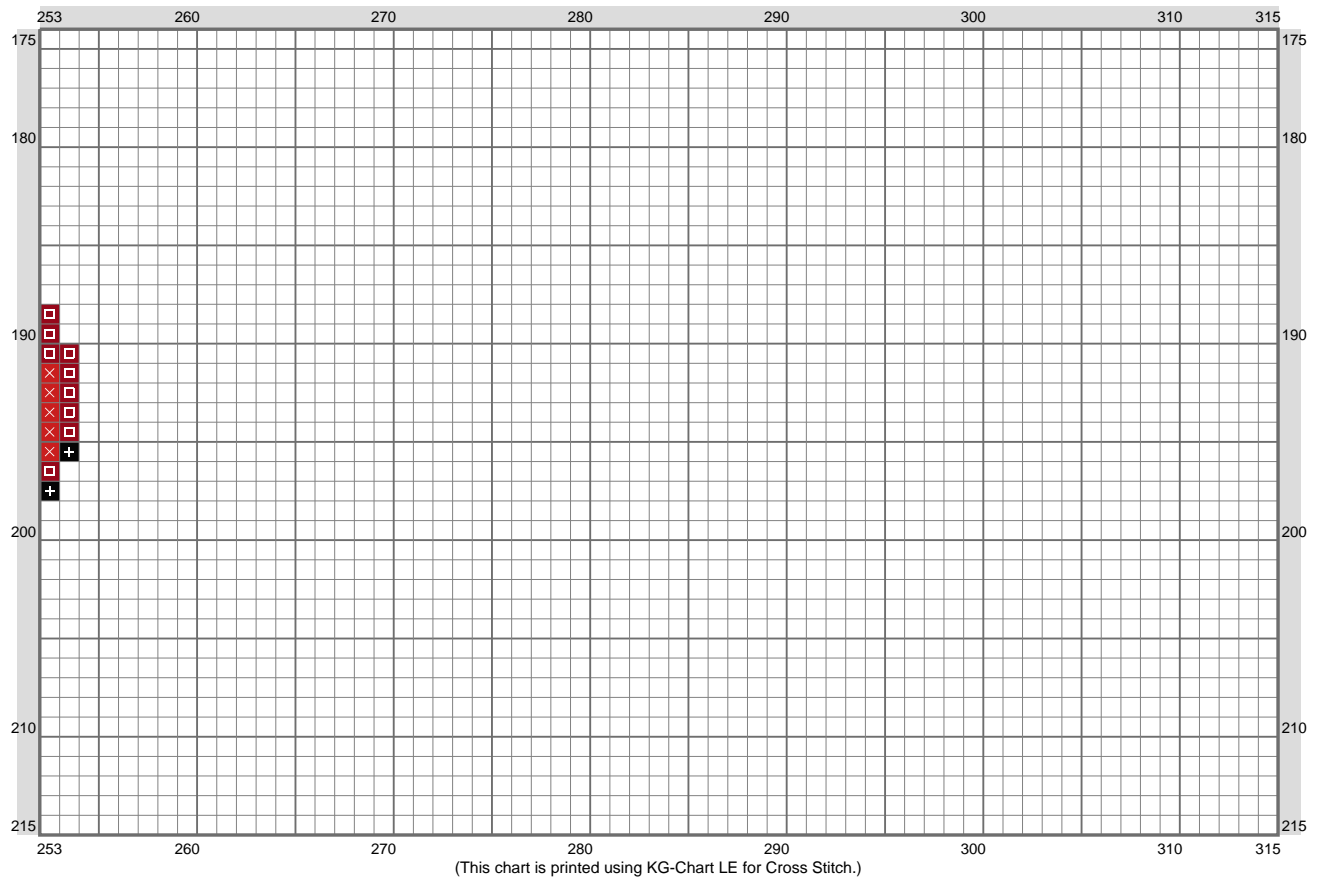
Sonic 2 - 7



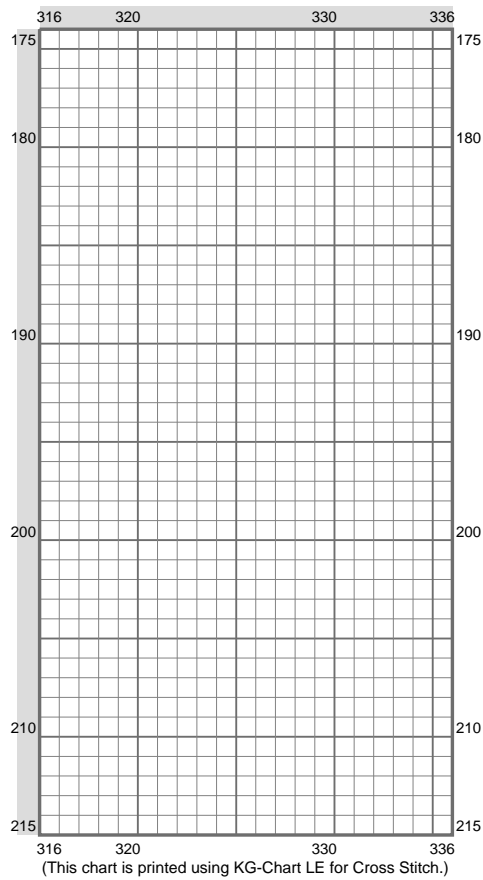
Sonic 2 - 7



Sonic 2 - 7



Sonic 2 - 7



Stitch Count: 336w x 215h
 Finished Size: 47.41 cm x 30.33 cm (18 ct./inch)
 Cloth: Aida
 Cloth's Color: White
 # of colors: 13 Colors

Color Table (DMC)

Cross Stitch

	310	(1662 ct)
	3021	(295 ct)
	498	(1816 ct)
	434	(563 ct)
	817	(1288 ct)
	796	(2758 ct)
	3843	(2693 ct)
	797	(1551 ct)
	640	(325 ct)
	3838	(816 ct)
	3022	(435 ct)
	436	(764 ct)
	828	(1112 ct)