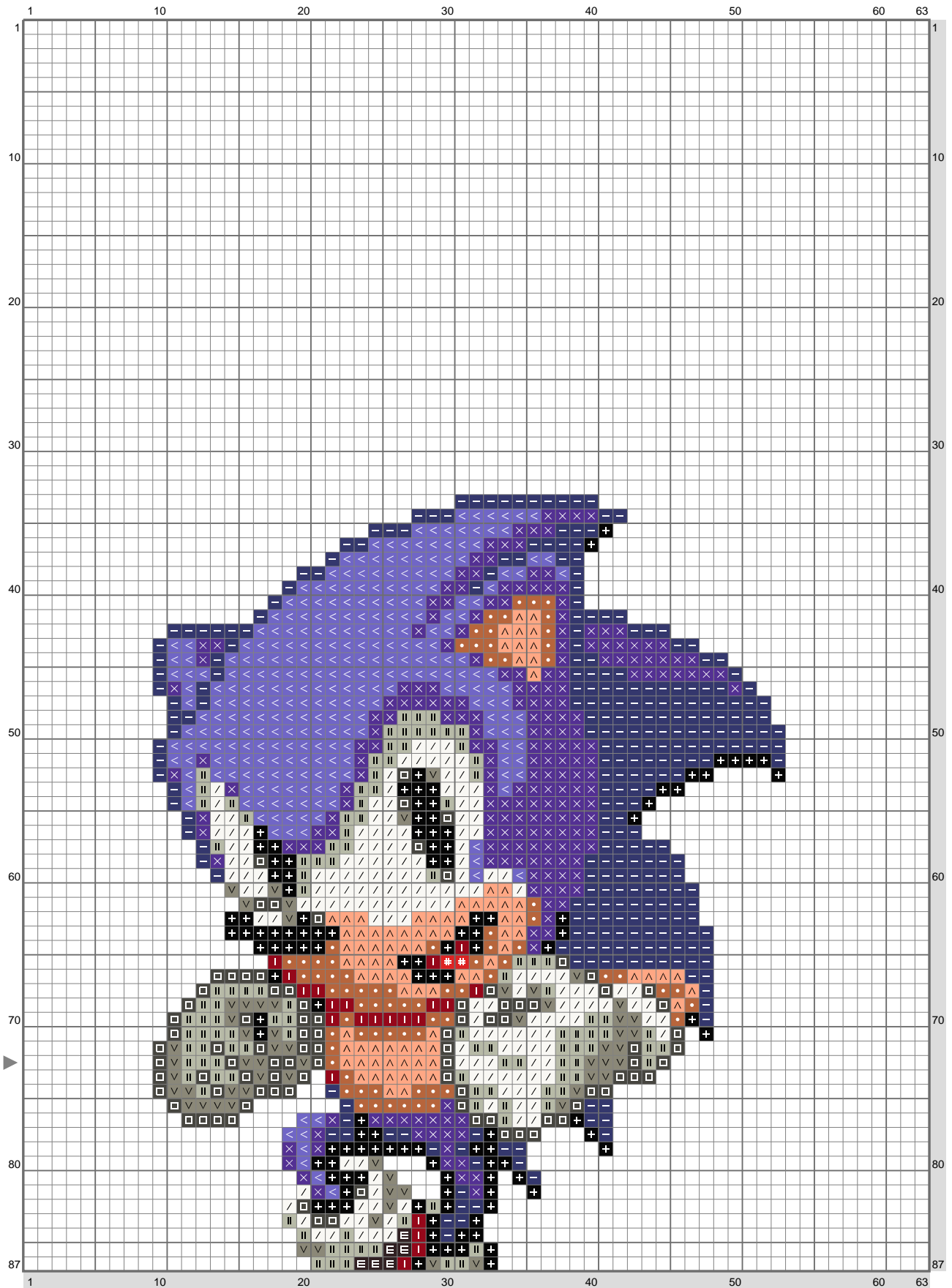


Sonic - 4

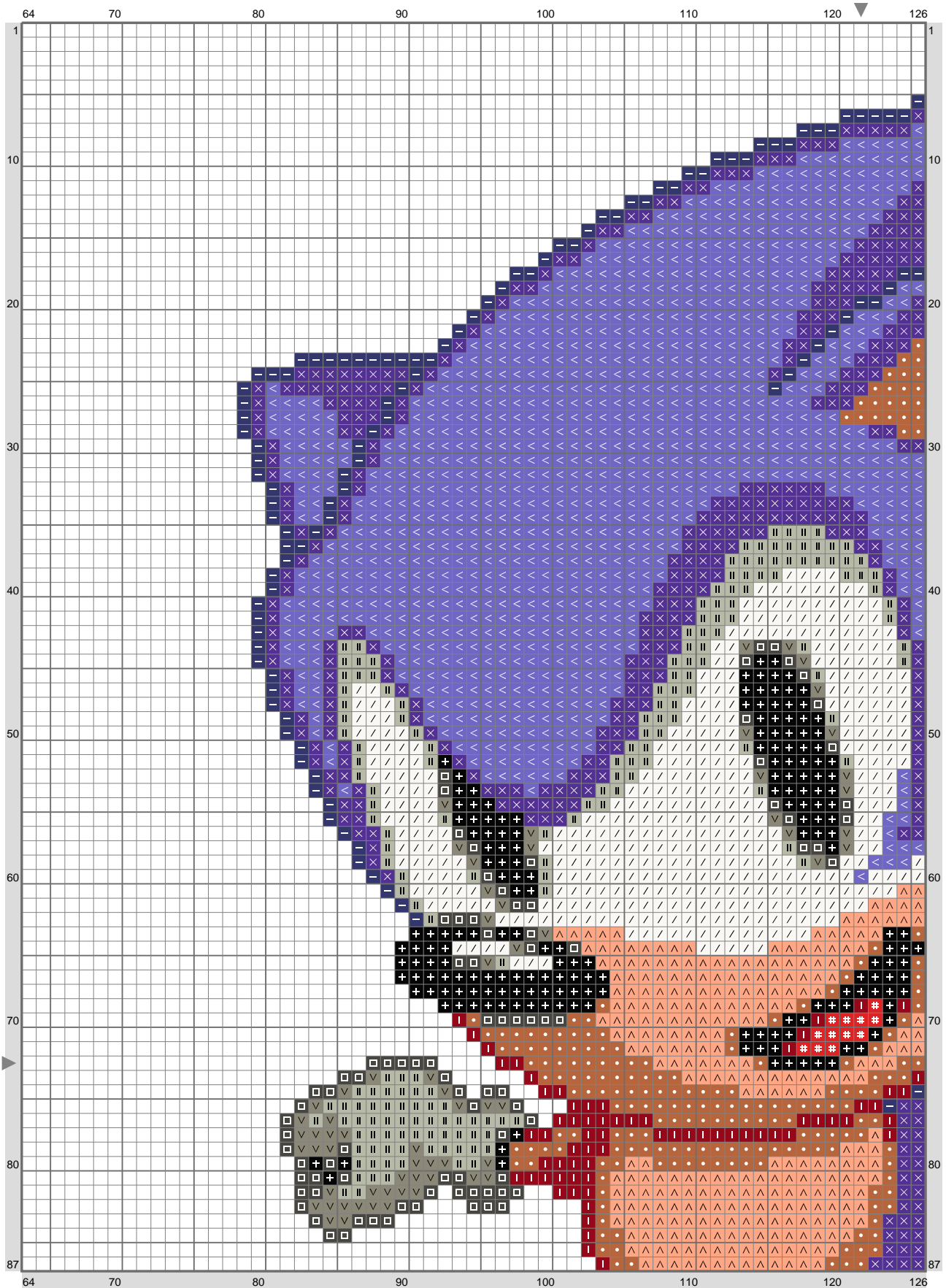


Sonic - 4

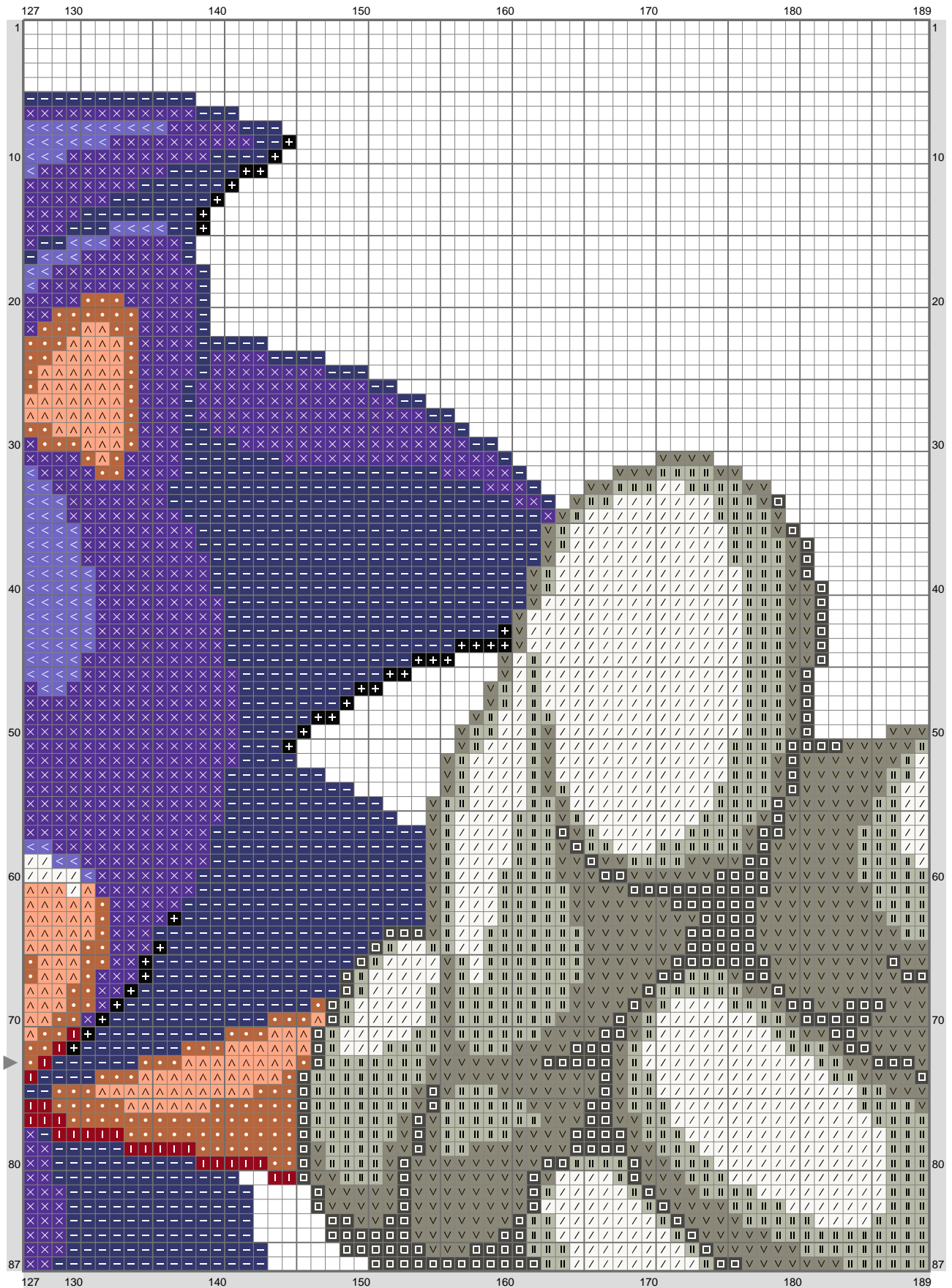


(This chart is printed using KG-Chart LE for Cross Stitch.)

Sonic - 4

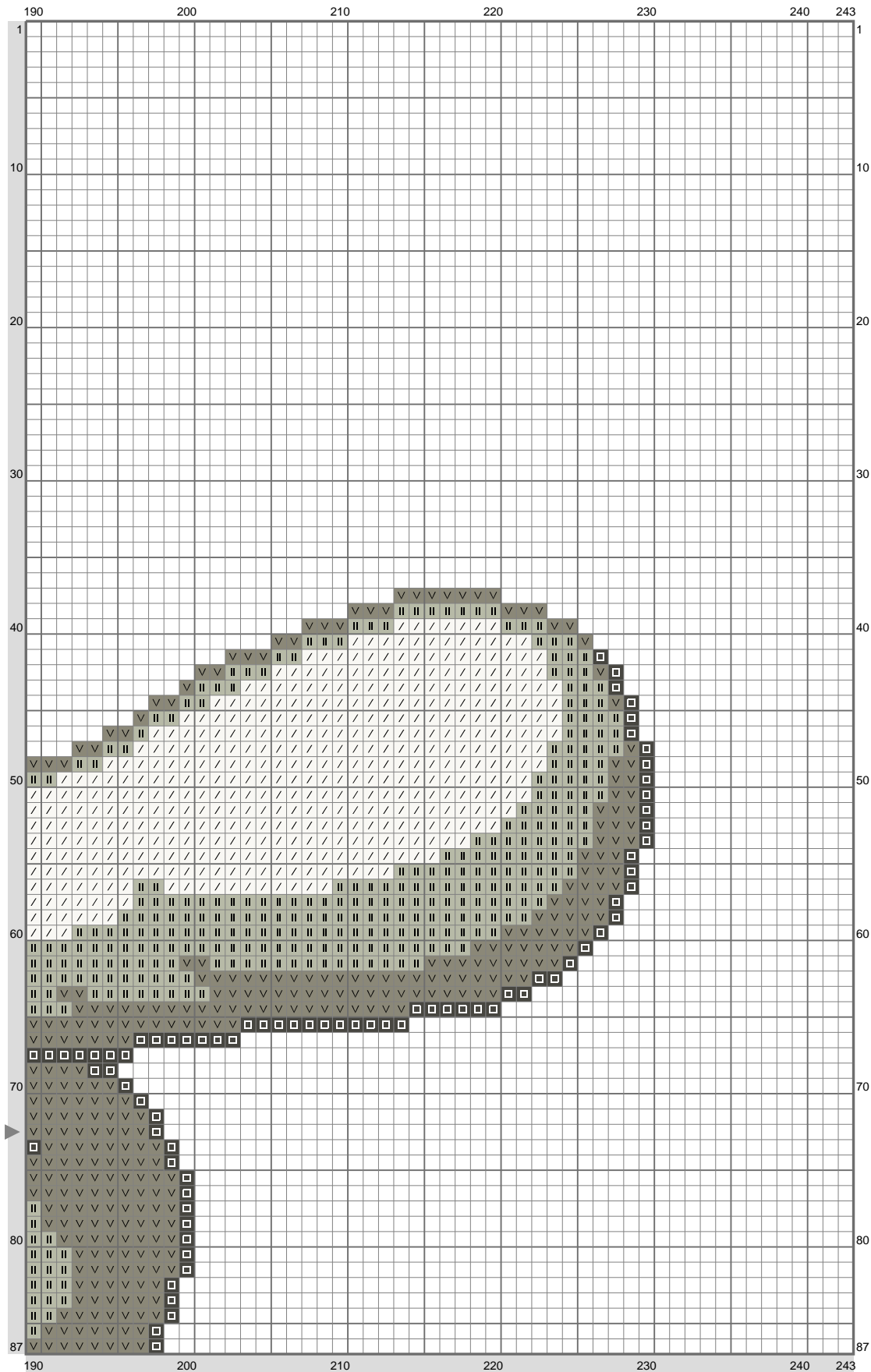


Sonic - 4



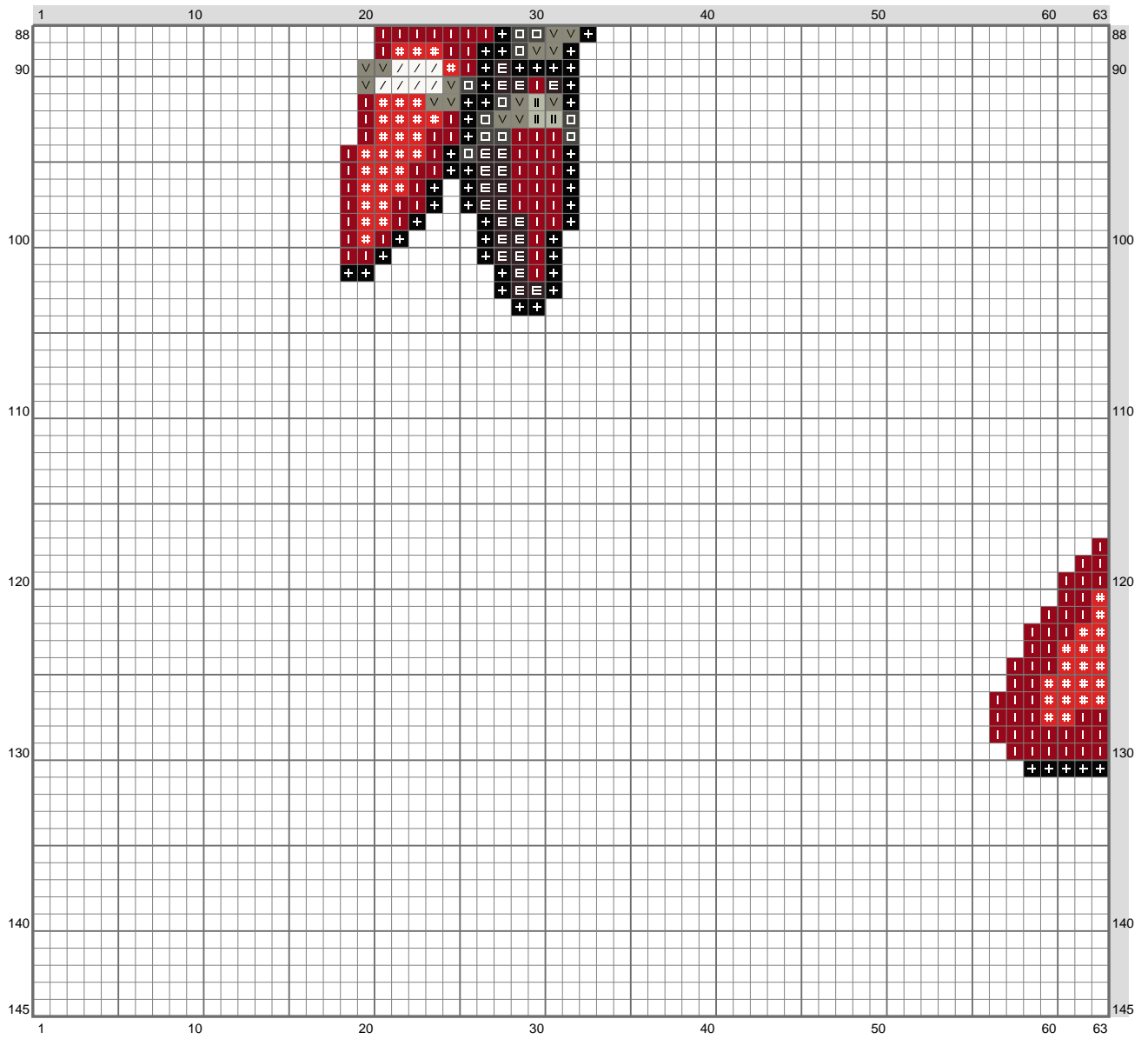
(This chart is printed using KG-Chart LE for Cross Stitch.)

Sonic - 4

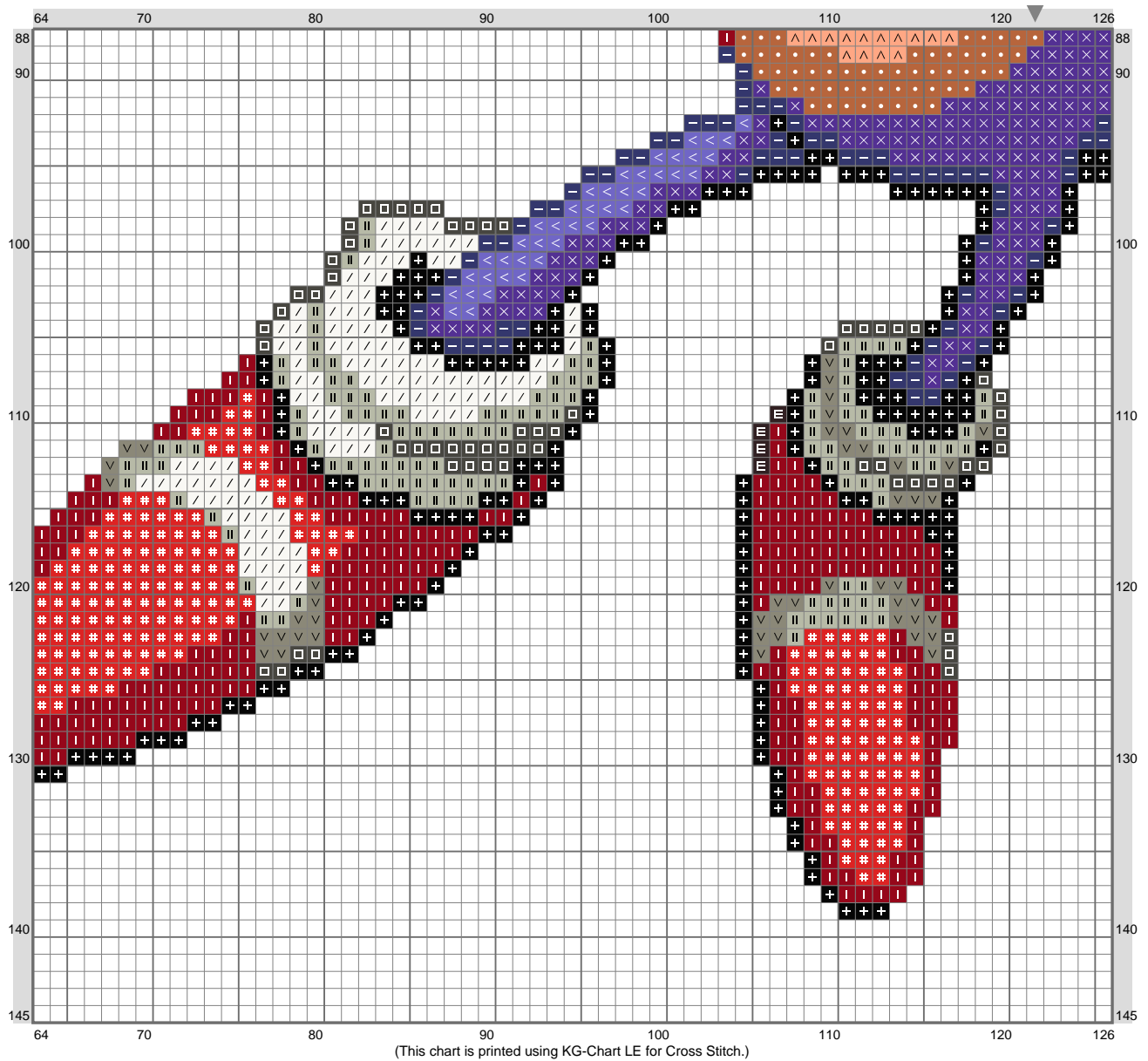


(This chart is printed using KG-Chart LE for Cross Stitch.)

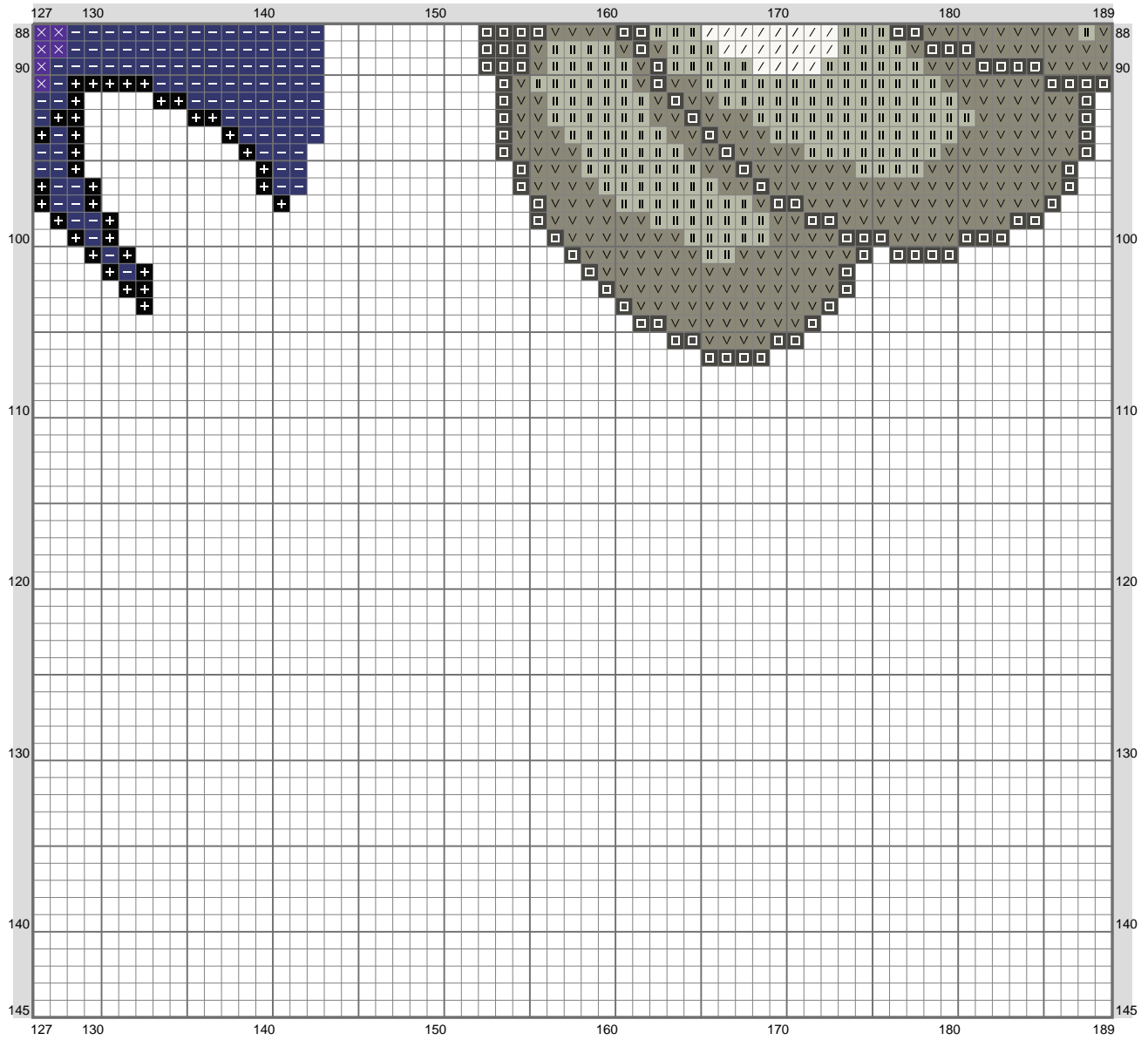
Sonic - 4



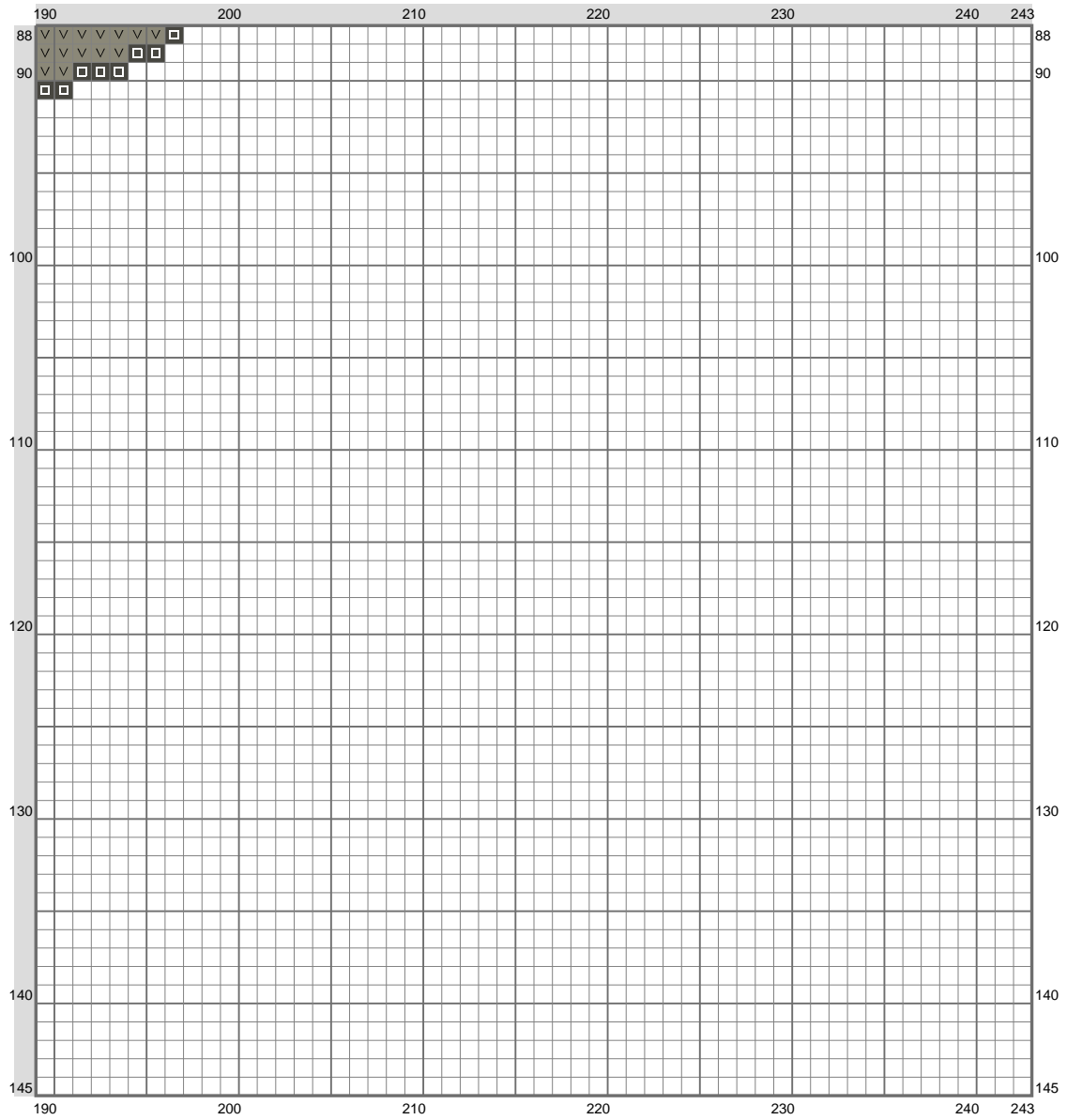
Sonic - 4



Sonic - 4



Sonic - 4



Sonic - 4

Stitch Count: 243w x 145h

Finished Size: 34.29 cm x 20.46 cm (18 ct./inch)














Cloth: Aida

Cloth's Color: White

of colors: 13 Colors

Color Table (DMC)

Cross Stitch

	310	(637 ct)
	939	(31 ct)
	3021	(635 ct)
	311	(1399 ct)
	796	(1371 ct)
	498	(457 ct)
	349	(281 ct)
	975	(463 ct)
	640	(1306 ct)
	402	(523 ct)
	523	(1416 ct)
	3838	(1481 ct)
	3865	(1807 ct)