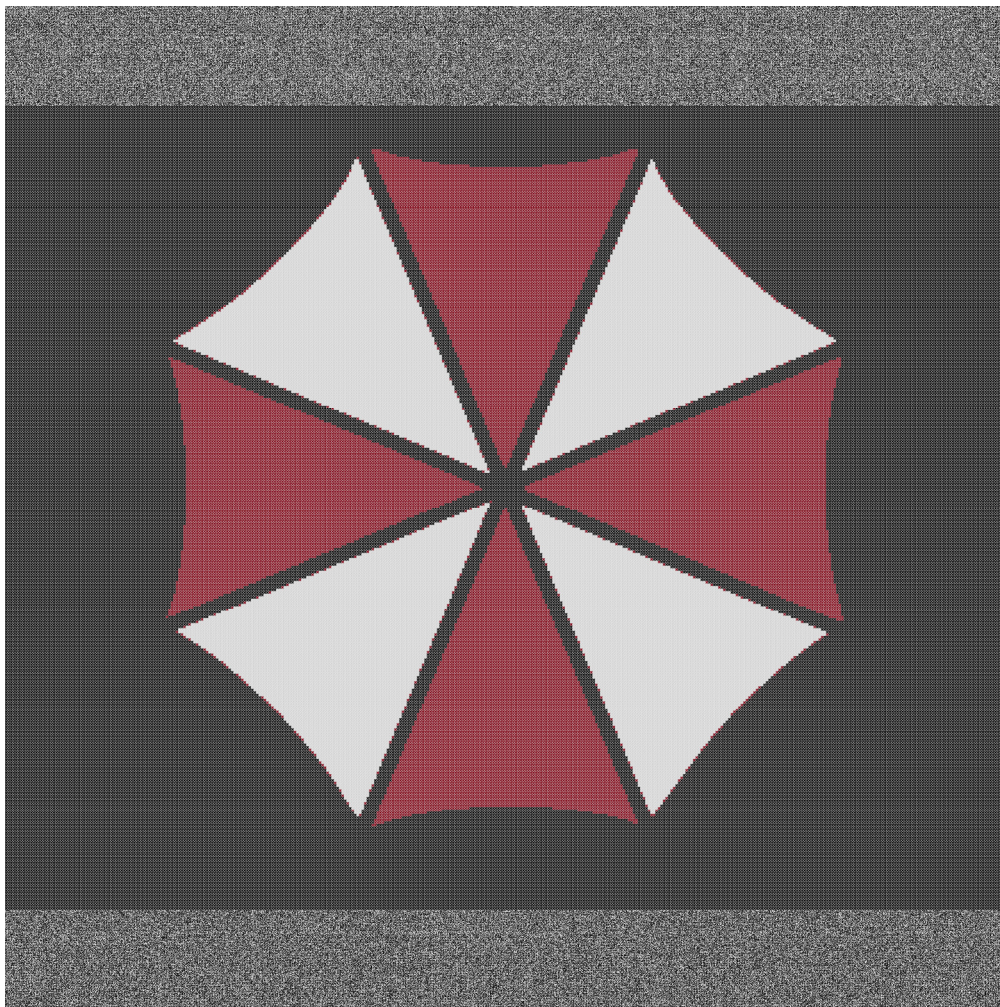
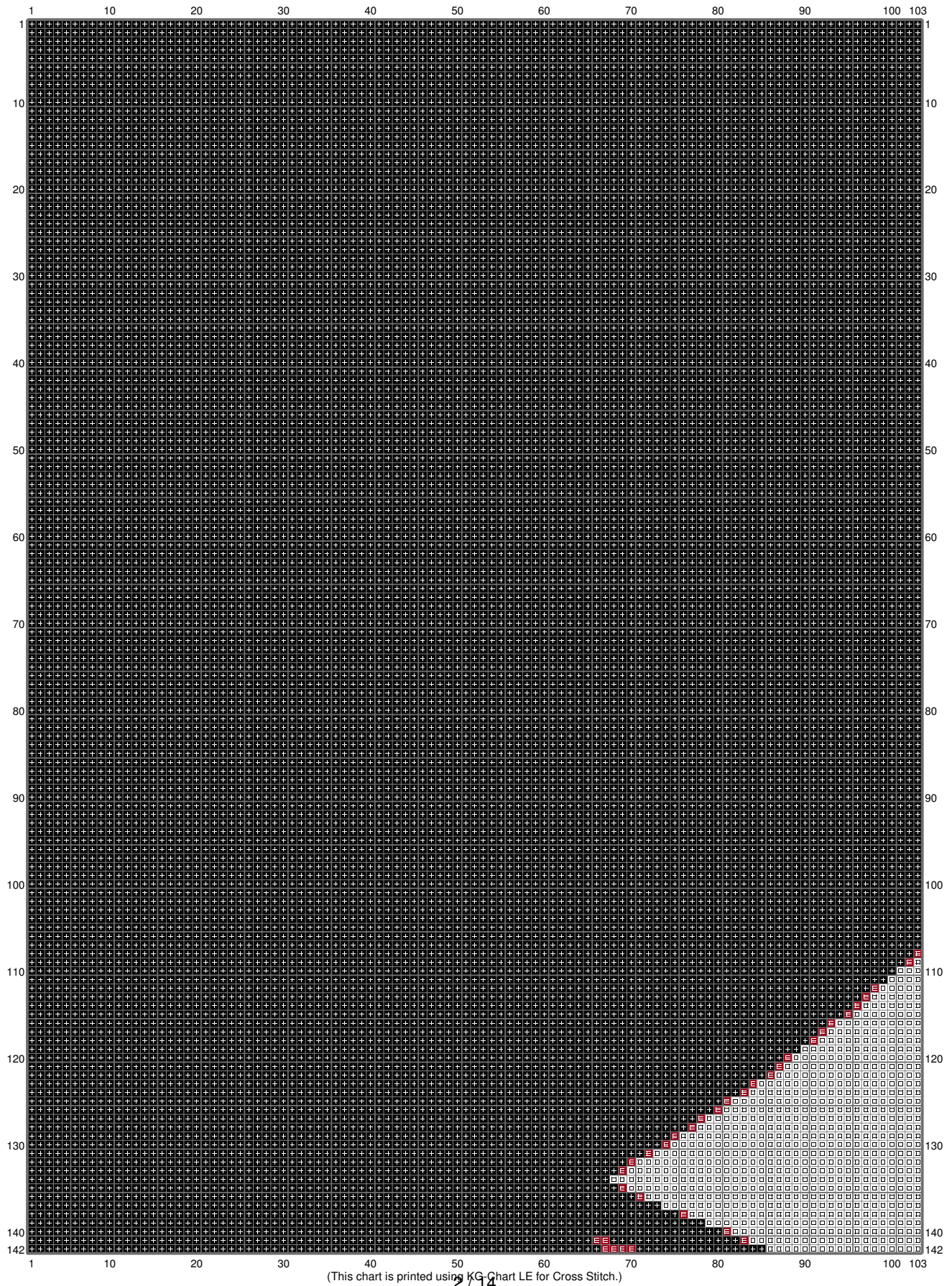


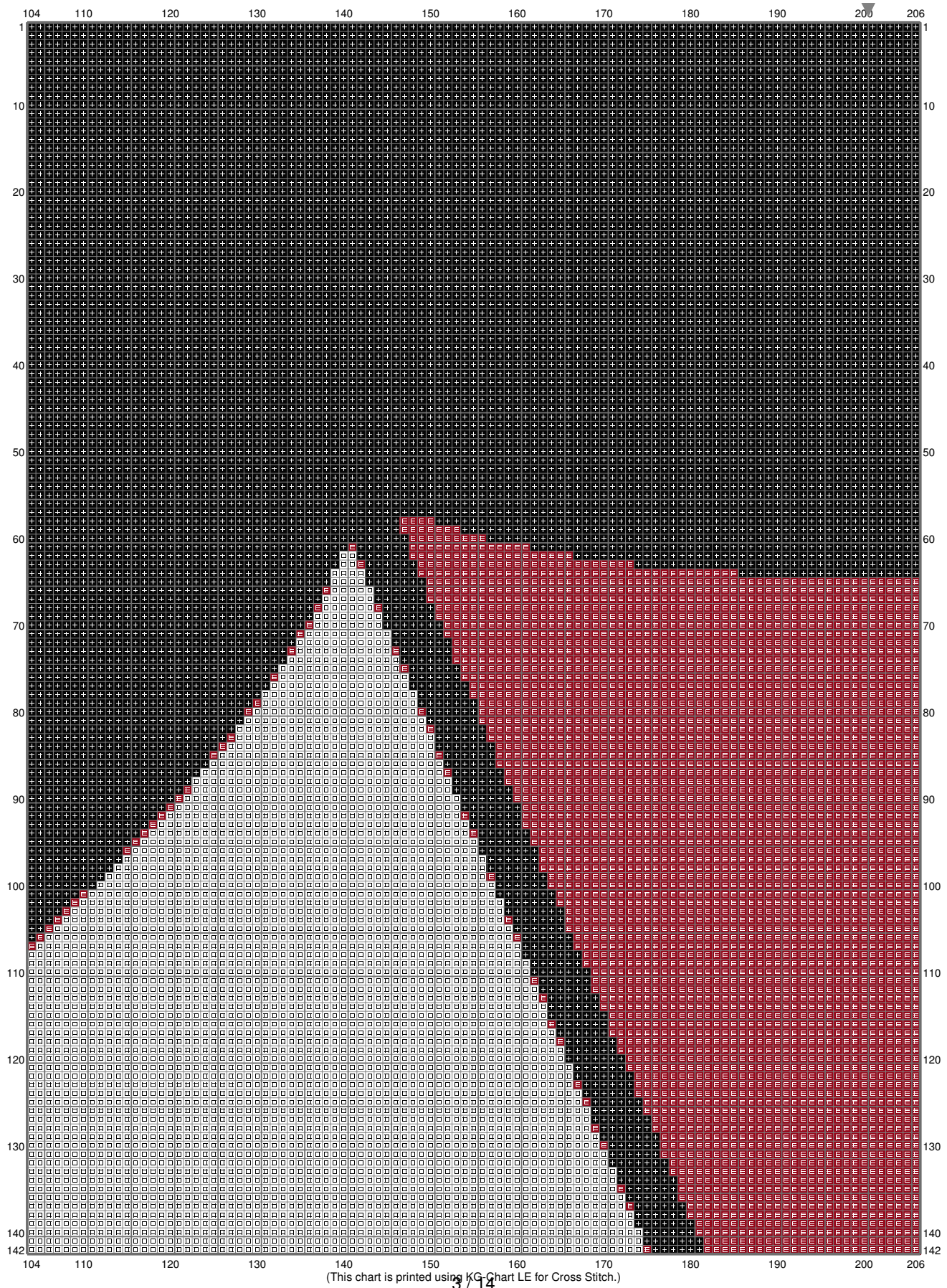
Untitled



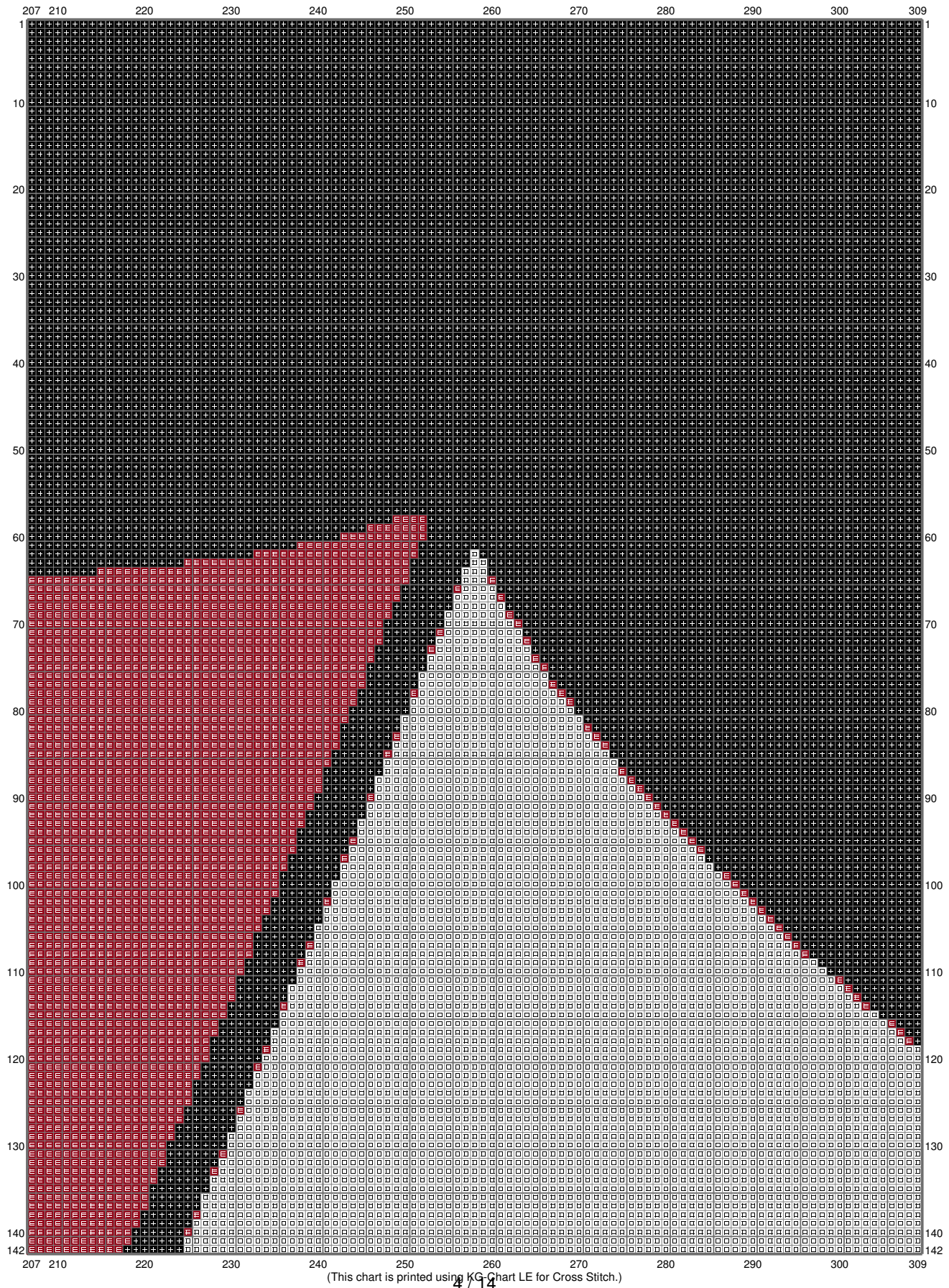
Untitled



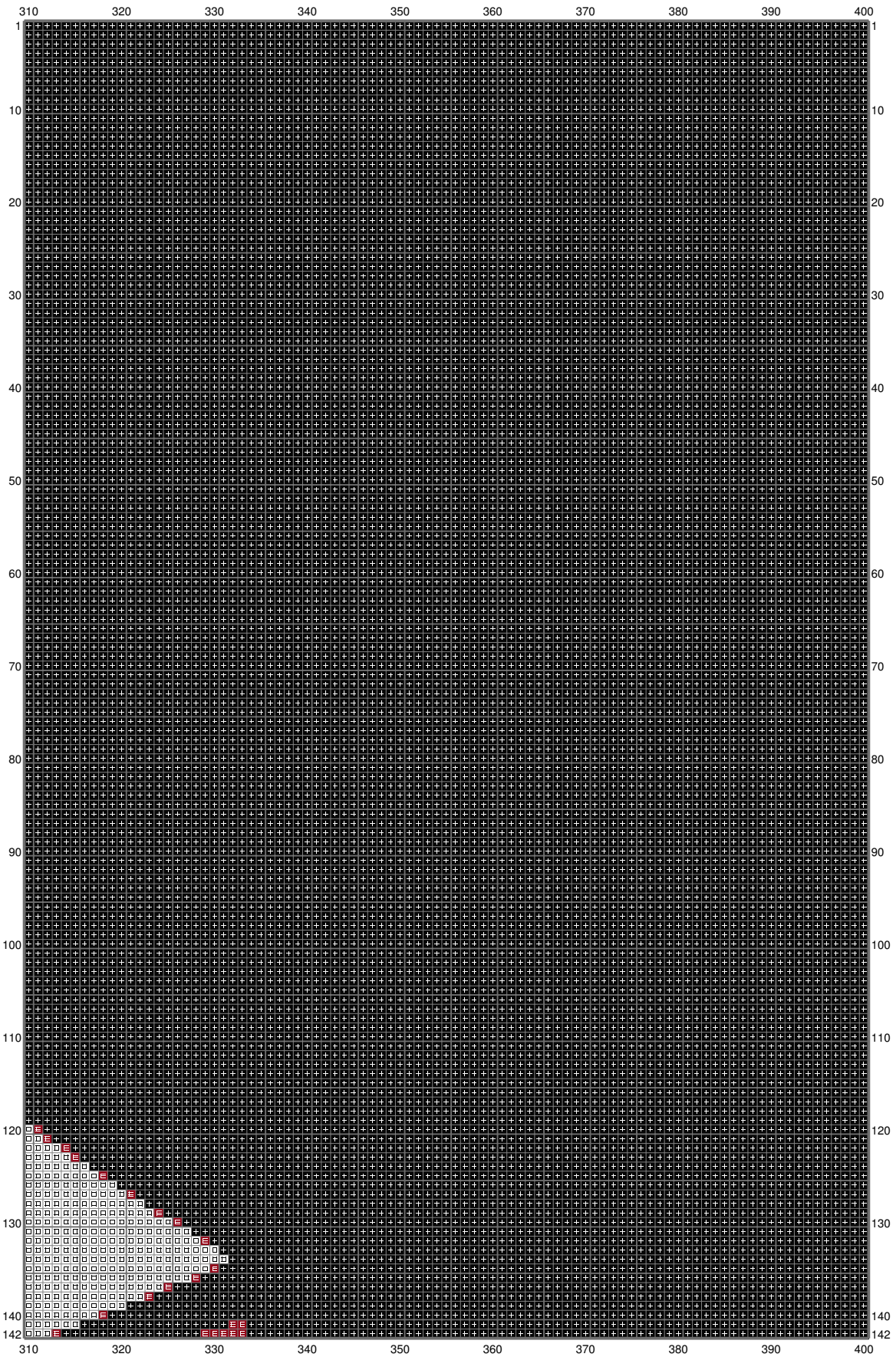
Untitled



Untitled

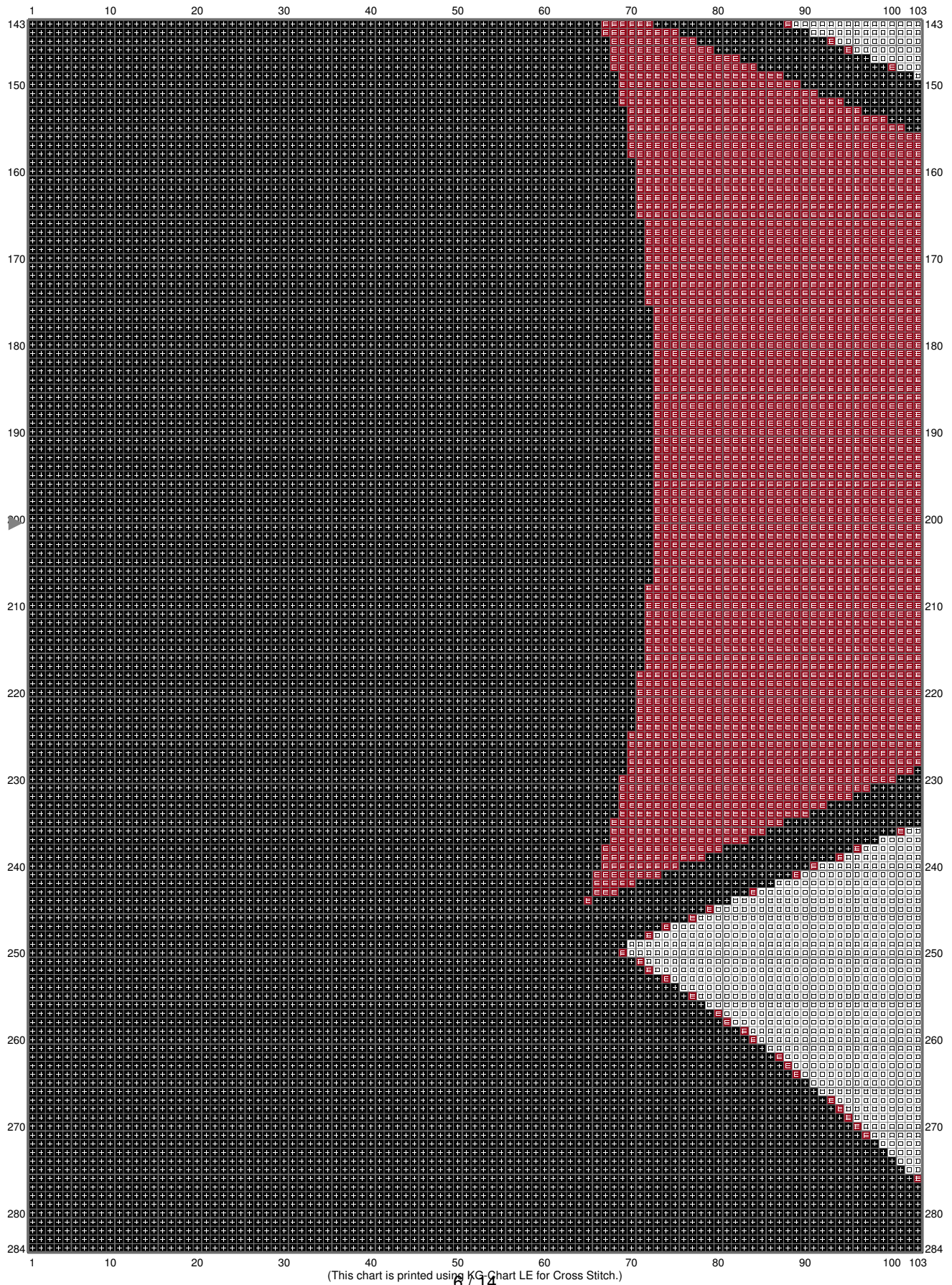


Untitled

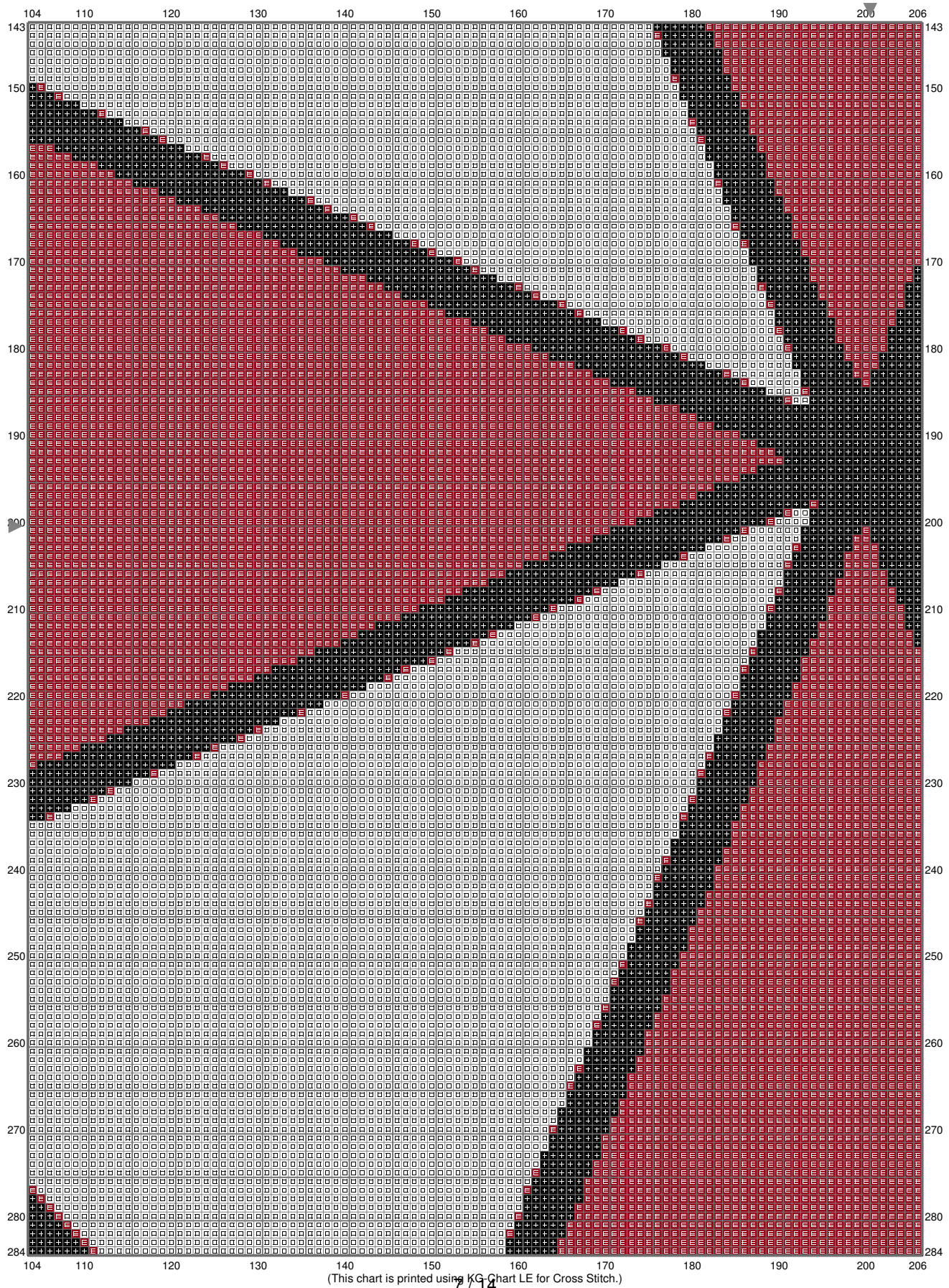


(This chart is printed using KG Chart LE for Cross Stitch.)

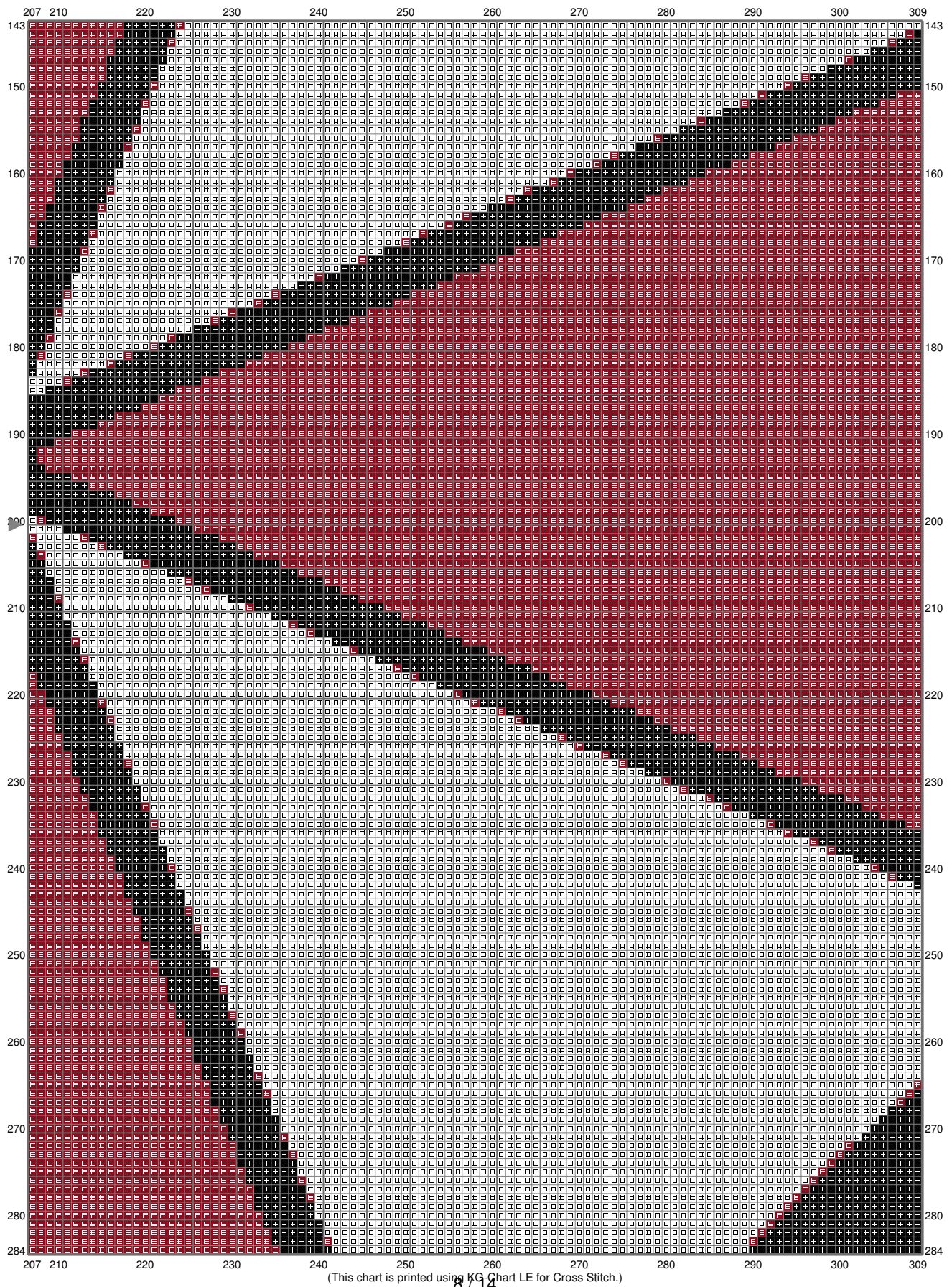
Untitled



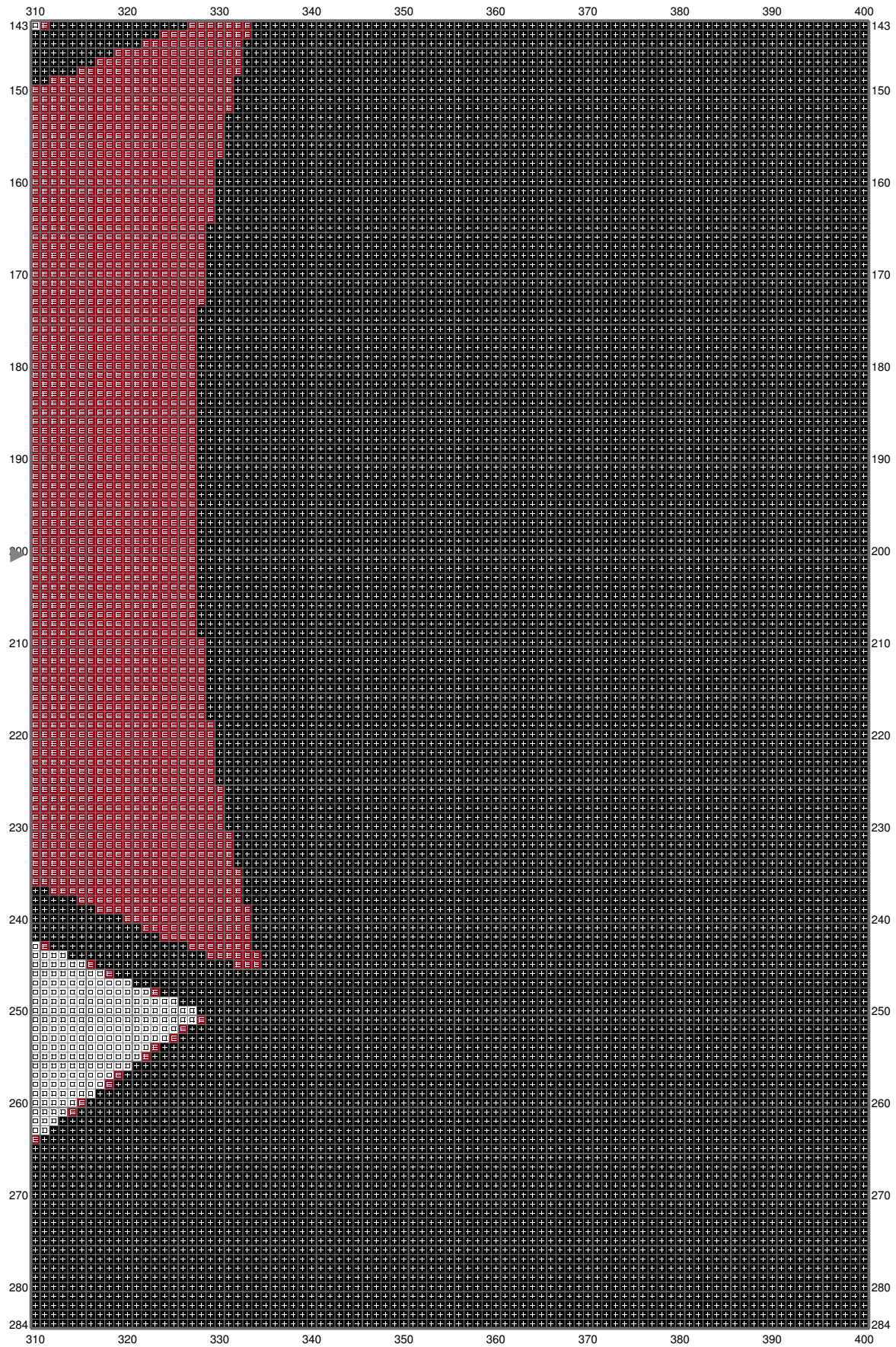
Untitled



Untitled

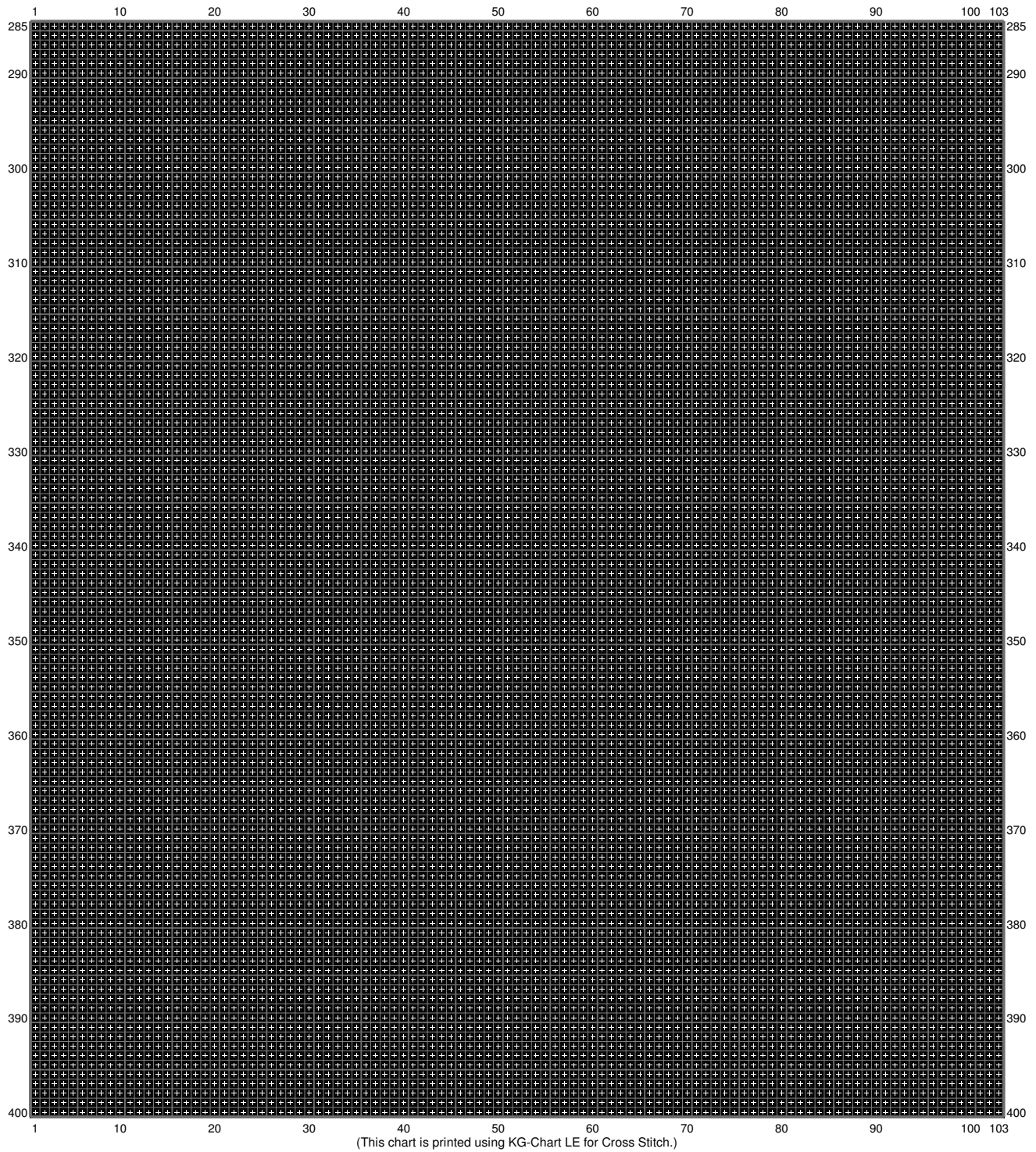


Untitled

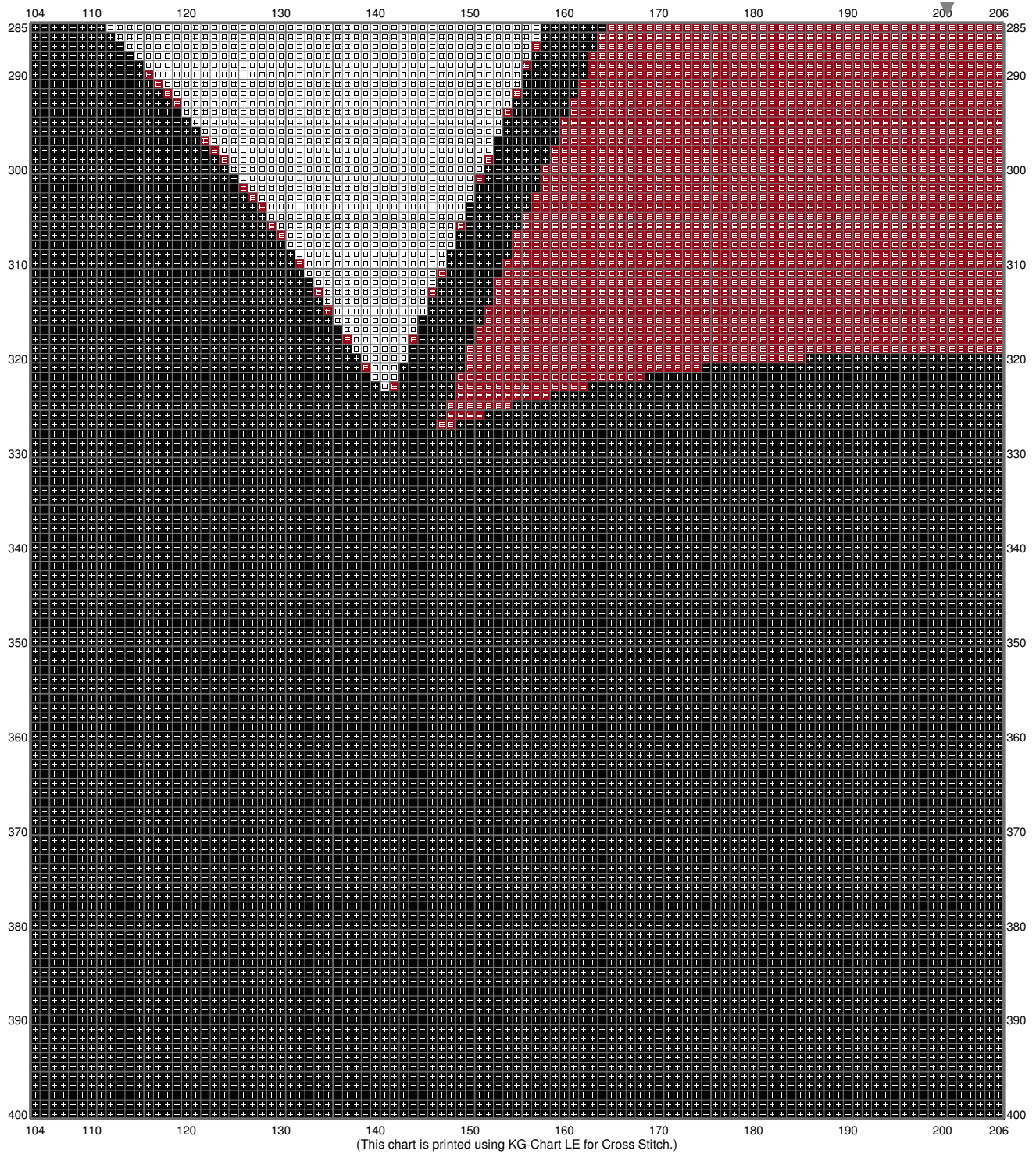


(This chart is printed using KG Chart LE for Cross Stitch.)

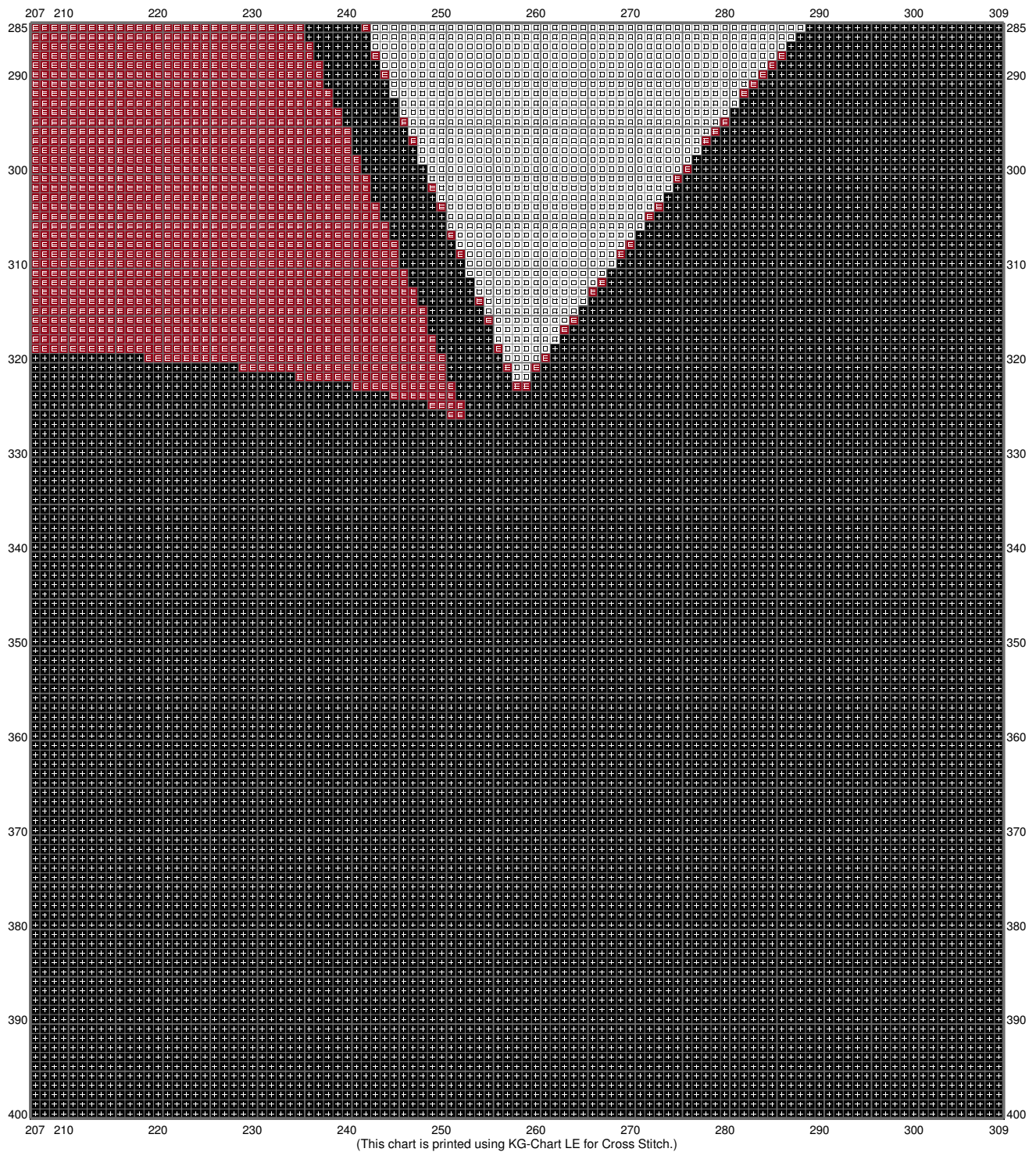
Untitled



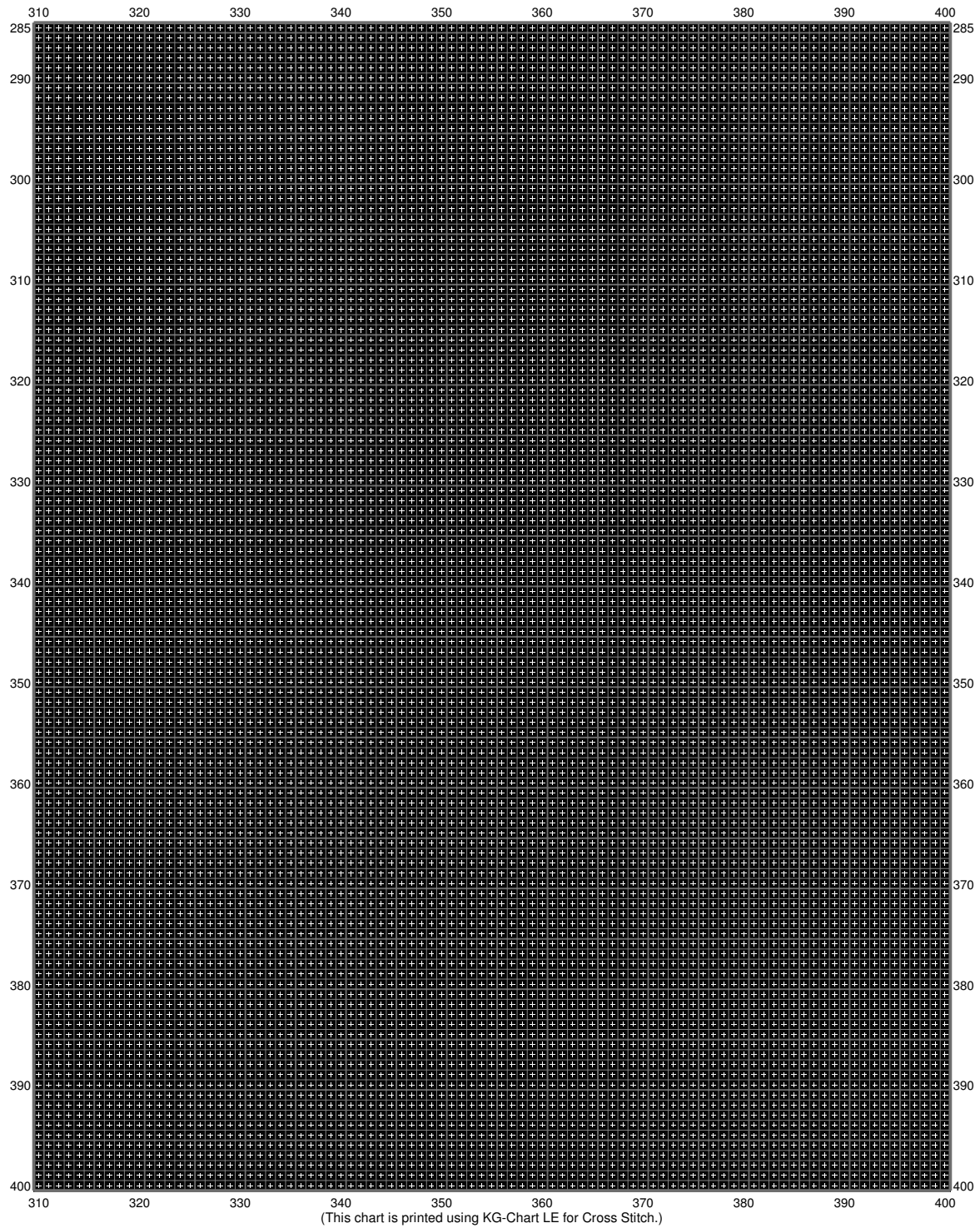
Untitled



Untitled



Untitled






Untitled

Stitch Count: 400w x 400h
Finished Size: 112.88 cm x 112.88 cm (18 ct./inch)
Cloth: Aida
Cloth's Color: White
of colors: 3 Colors

Color Table (DMC)

Cross Stitch

	310	(110448 ct)
	498	(25476 ct)
	B5200	(24076 ct)