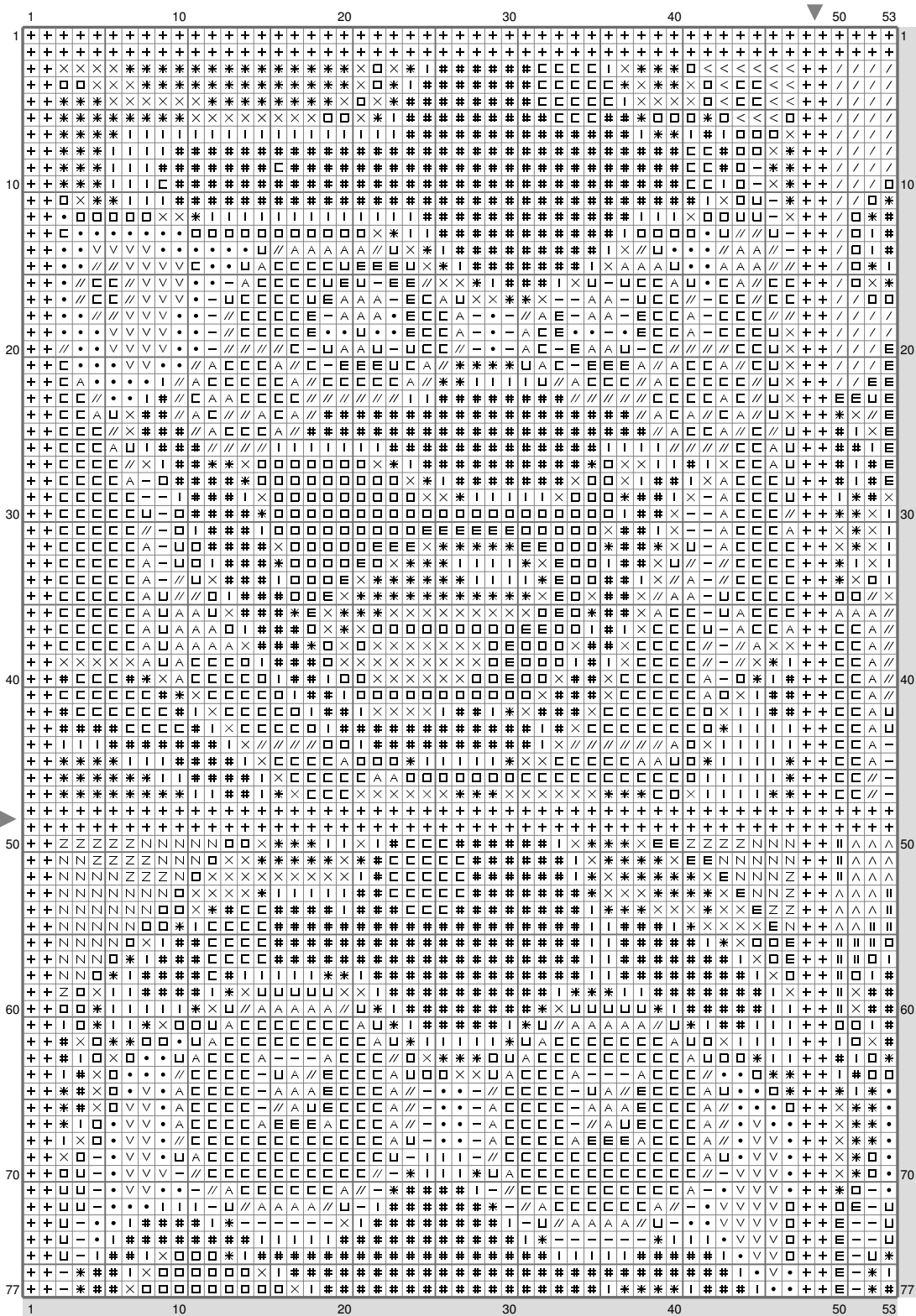
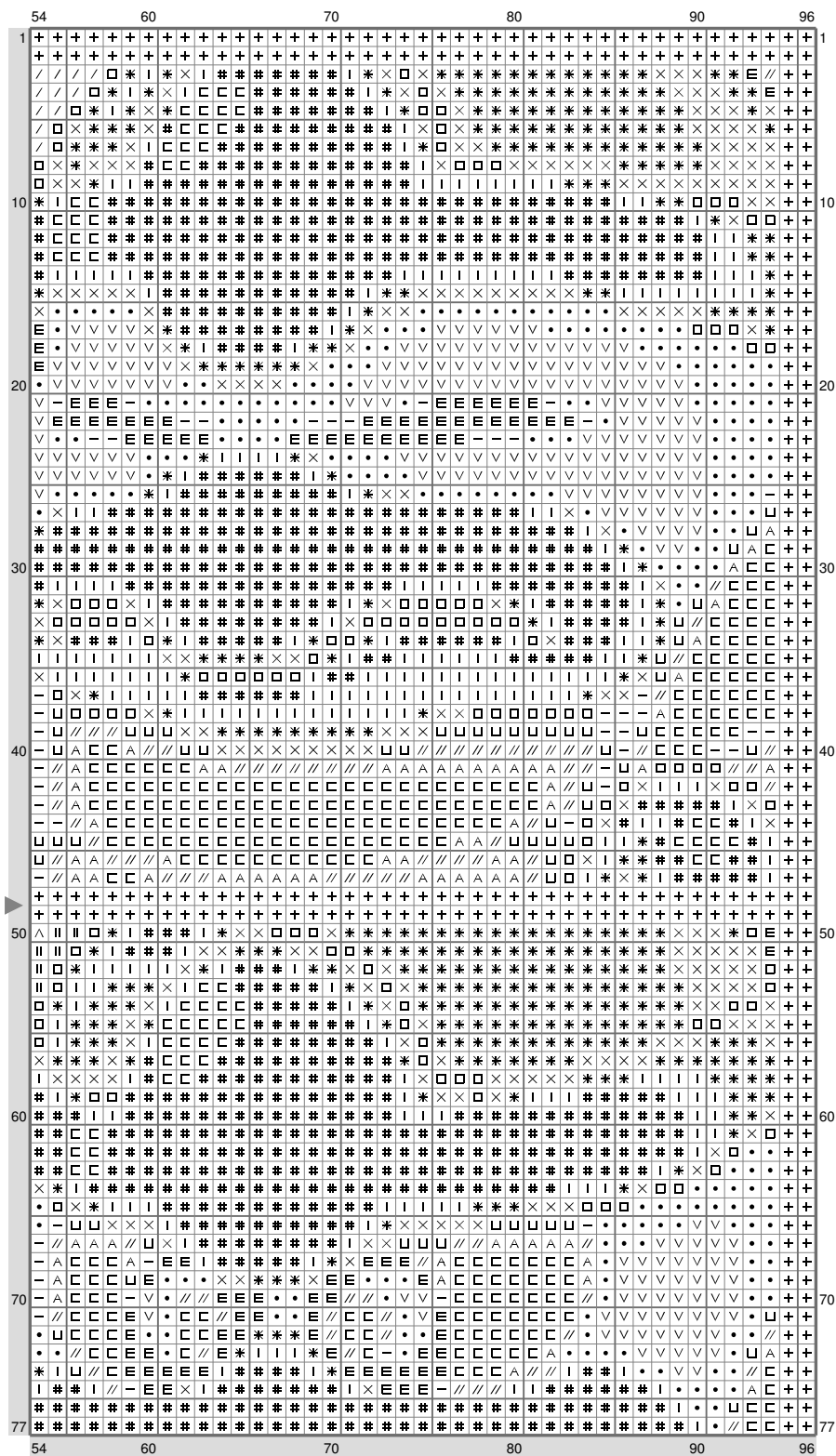


# Untitled



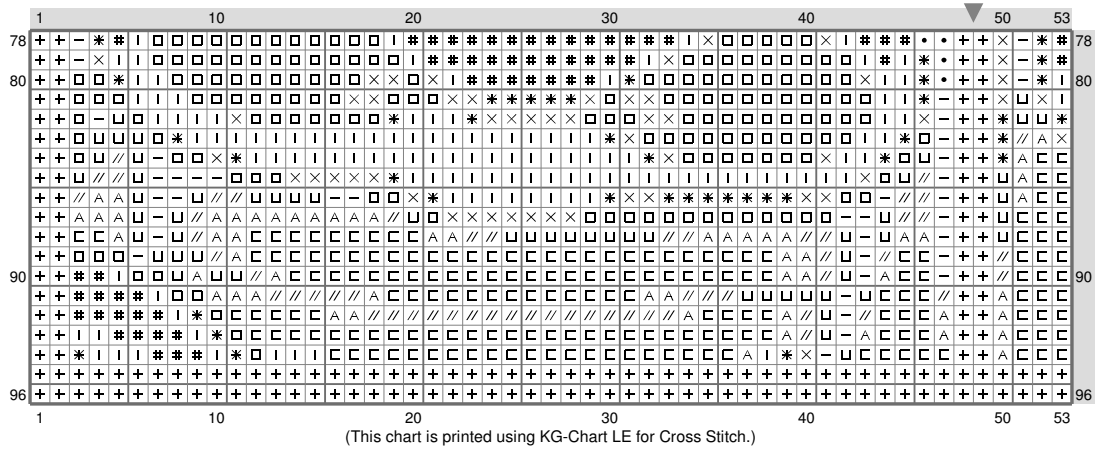
(This chart is printed using KG-Chart LE for Cross Stitch.)

# Untitled

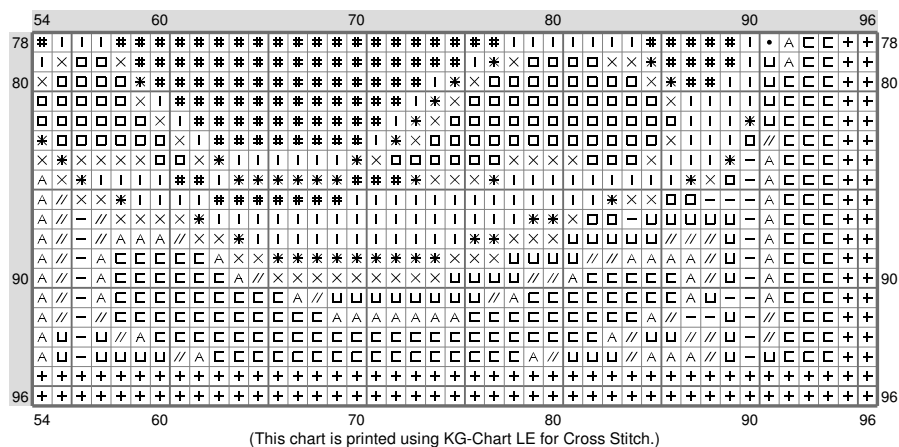


(This chart is printed using KG-Chart LE for Cross Stitch.)

# Untitled



# Untitled



Stitch Count: 96w x 96h  
 Finished Size: 34.83 cm x 34.83 cm (14 ct./inch)  
 Cloth: Aida  
 Cloth's Color: White  
 # of colors: 20 Colors

## Color Table (DMC)

### Cross Stitch

+	310	(1116 ct)
E	939	(183 ct)
□	815	(678 ct)
—	935	(243 ct)
×	3777	(621 ct)
*	349	(730 ct)
I	740	(817 ct)
#	972	(1780 ct)
•	3843	(378 ct)
∇	995	(286 ct)
△	327	(18 ct)
	797	(21 ct)
<	322	(15 ct)
U	646	(279 ct)
/	3851	(67 ct)
Z	3805	(21 ct)
N	3836	(56 ct)
//	647	(334 ct)
A	648	(375 ct)
C	3865	(1198 ct)