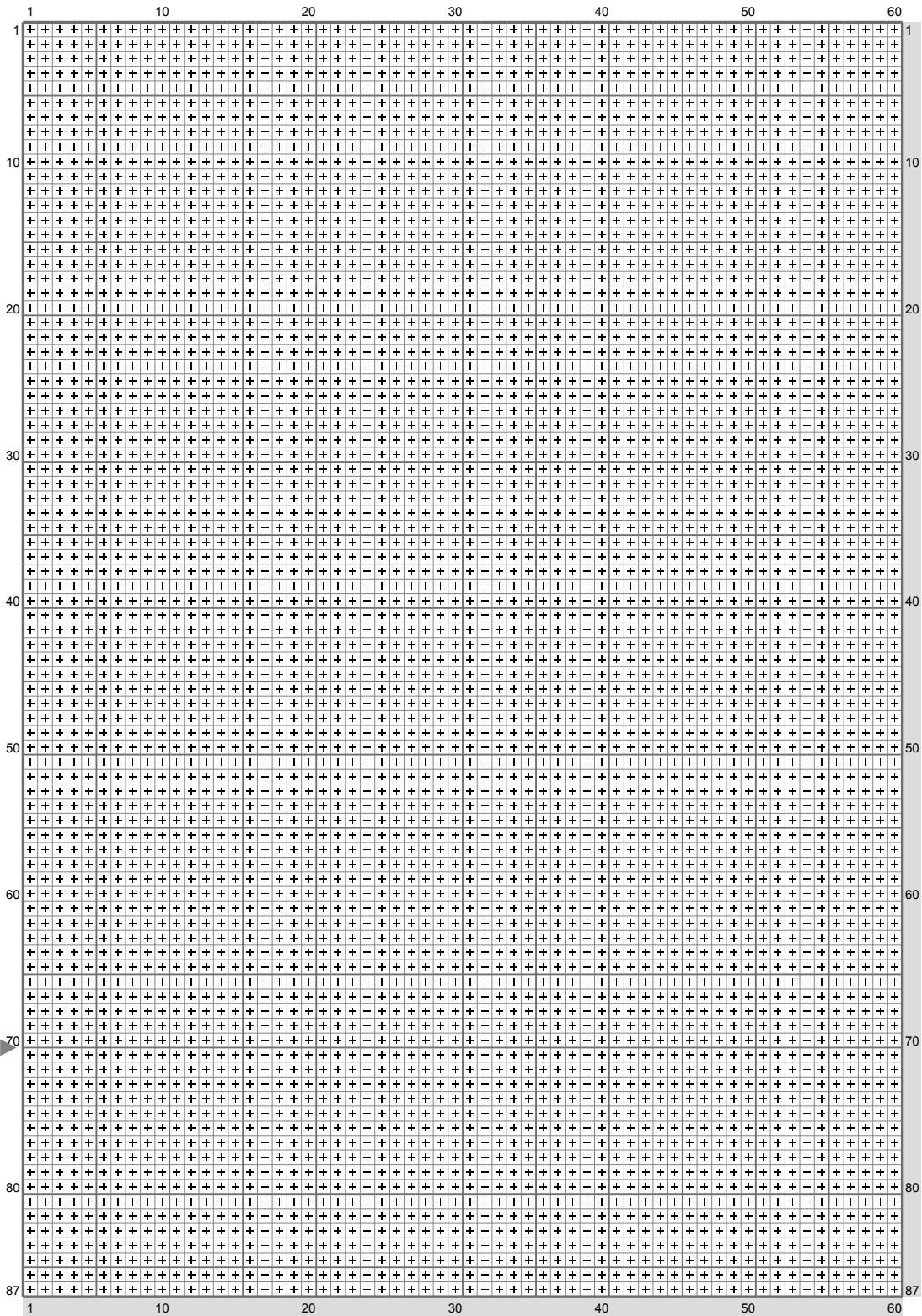
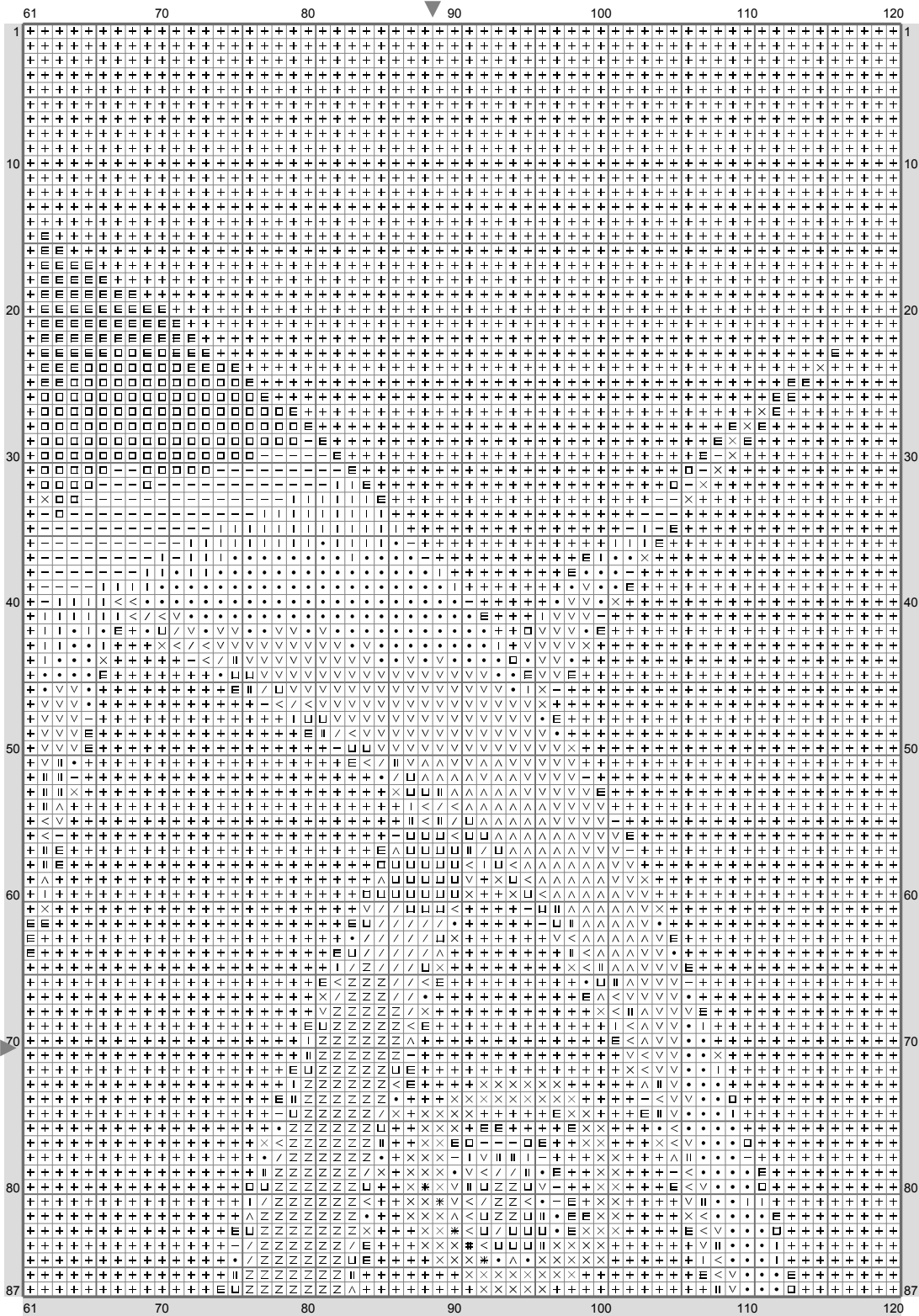


## Deus Ex



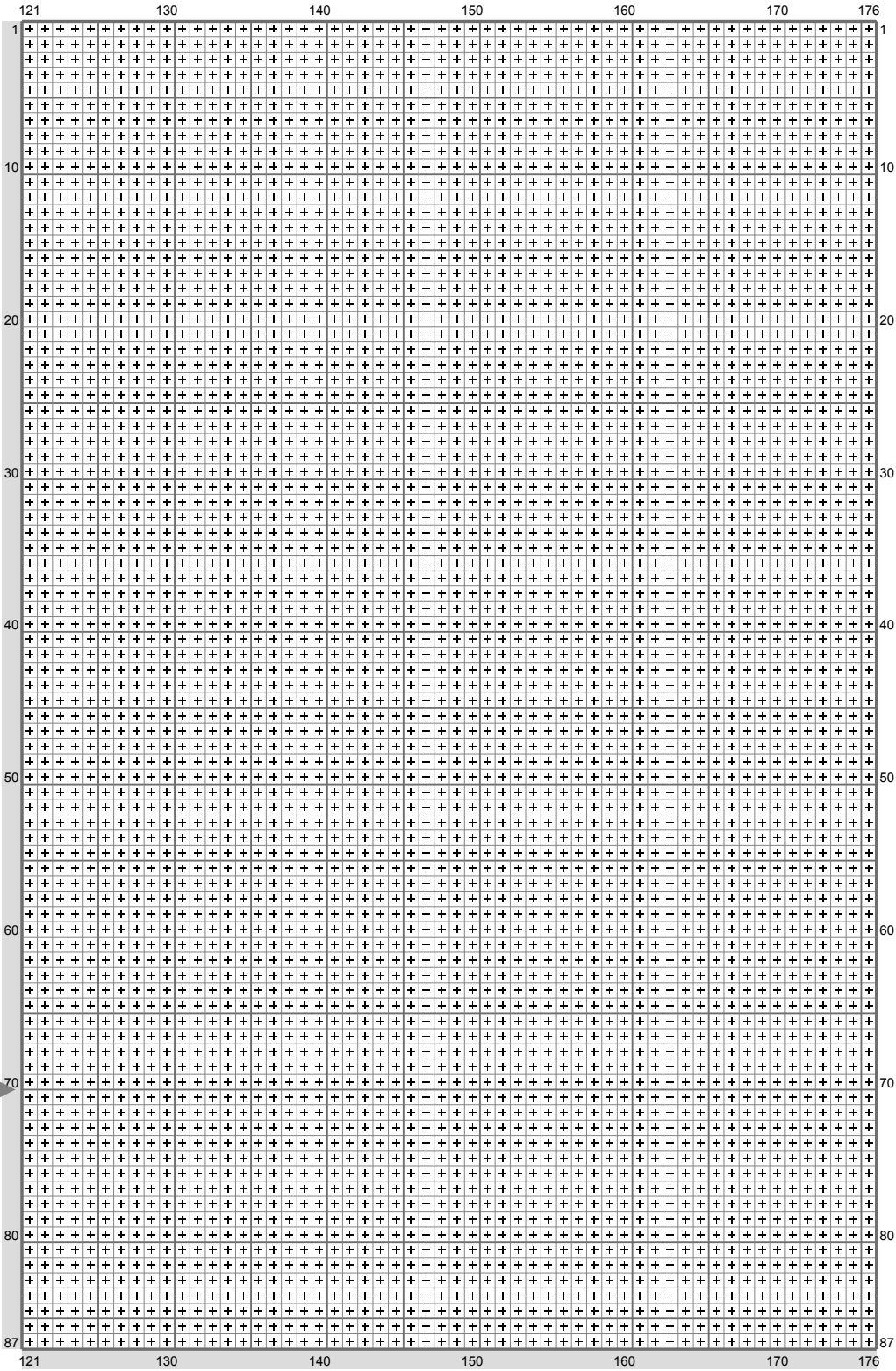
(This chart is printed using KG-Chart LE for Cross Stitch.)

## Deus Ex



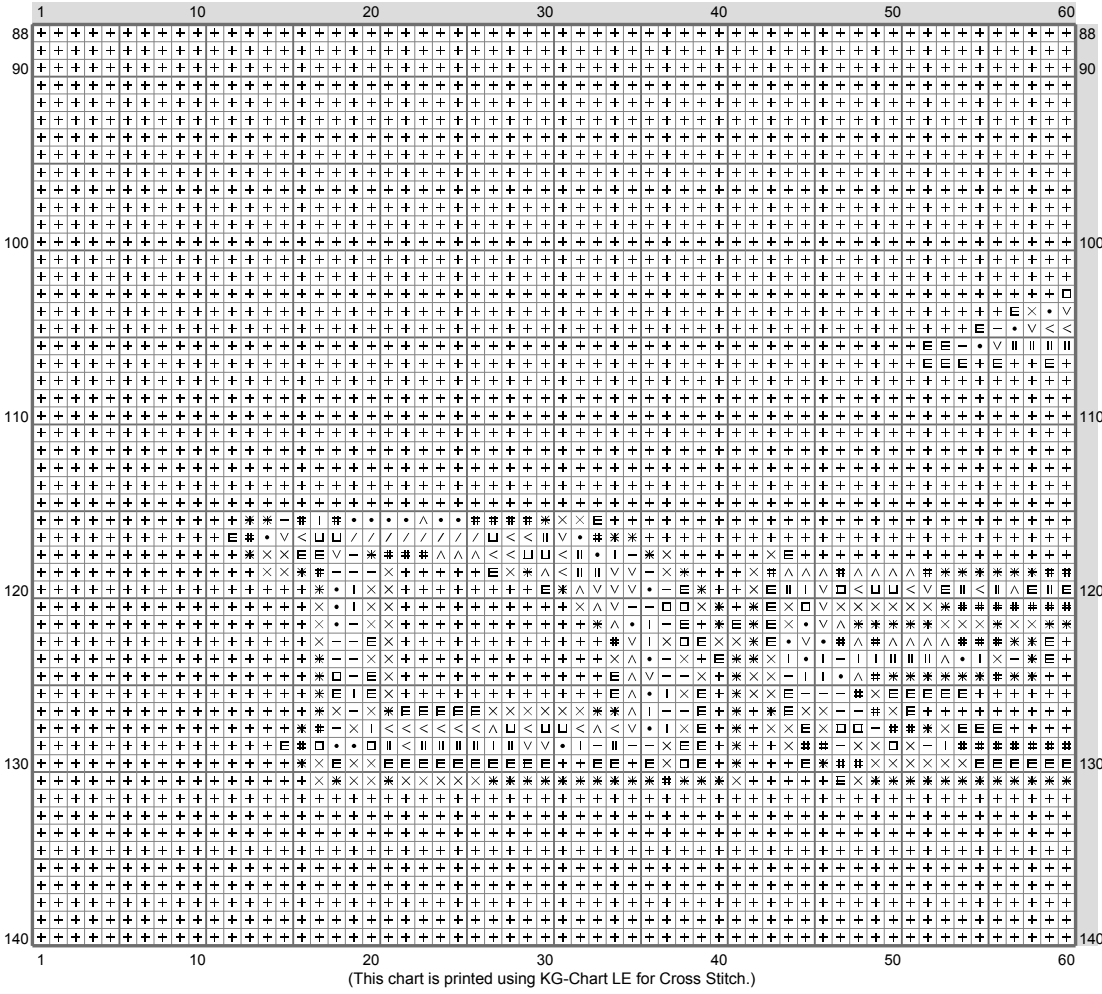
(This chart is printed using KG-Chart LE for Cross Stitch.)

## Deus Ex

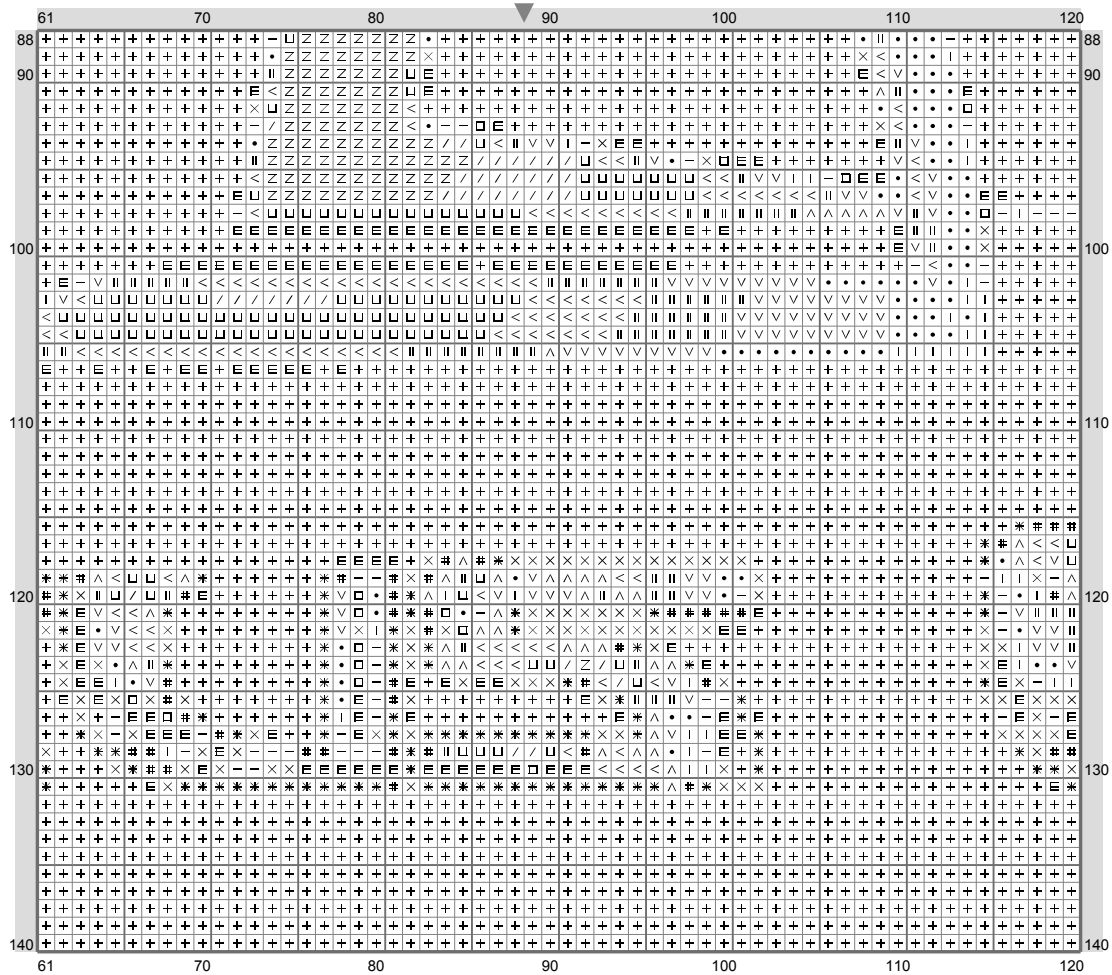


(This chart is printed using KG-Chart LE for Cross Stitch.)

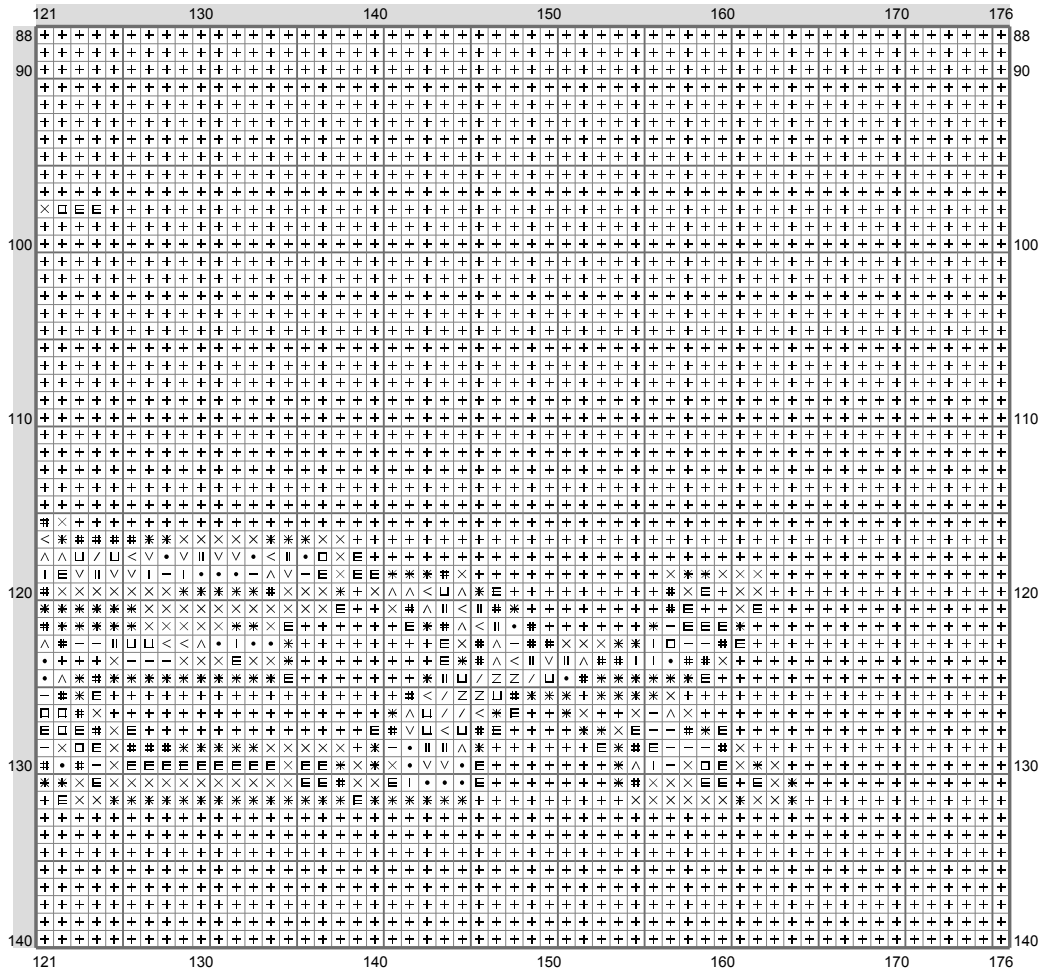
## Deus Ex



# Deus Ex



# Deus Ex



## Deus Ex

Stitch Count: 176w x 140h

Finished Size: 20.32 cm x 16.16 cm (22 ct./inch)

















Cloth: Aida

Cloth's Color: White

# of colors: 16 Colors

### Color Table (DMC)

#### **Cross Stitch**

	310	(20883 ct)
	939	(440 ct)
	934	(174 ct)
	3021	(260 ct)
	500	(442 ct)
	311	(307 ct)
	3362	(173 ct)
	413	(140 ct)
	535	(378 ct)
	3787	(355 ct)
	317	(181 ct)
	522	(155 ct)
	3022	(214 ct)
	3023	(213 ct)
	822	(101 ct)
	B5200	(224 ct)