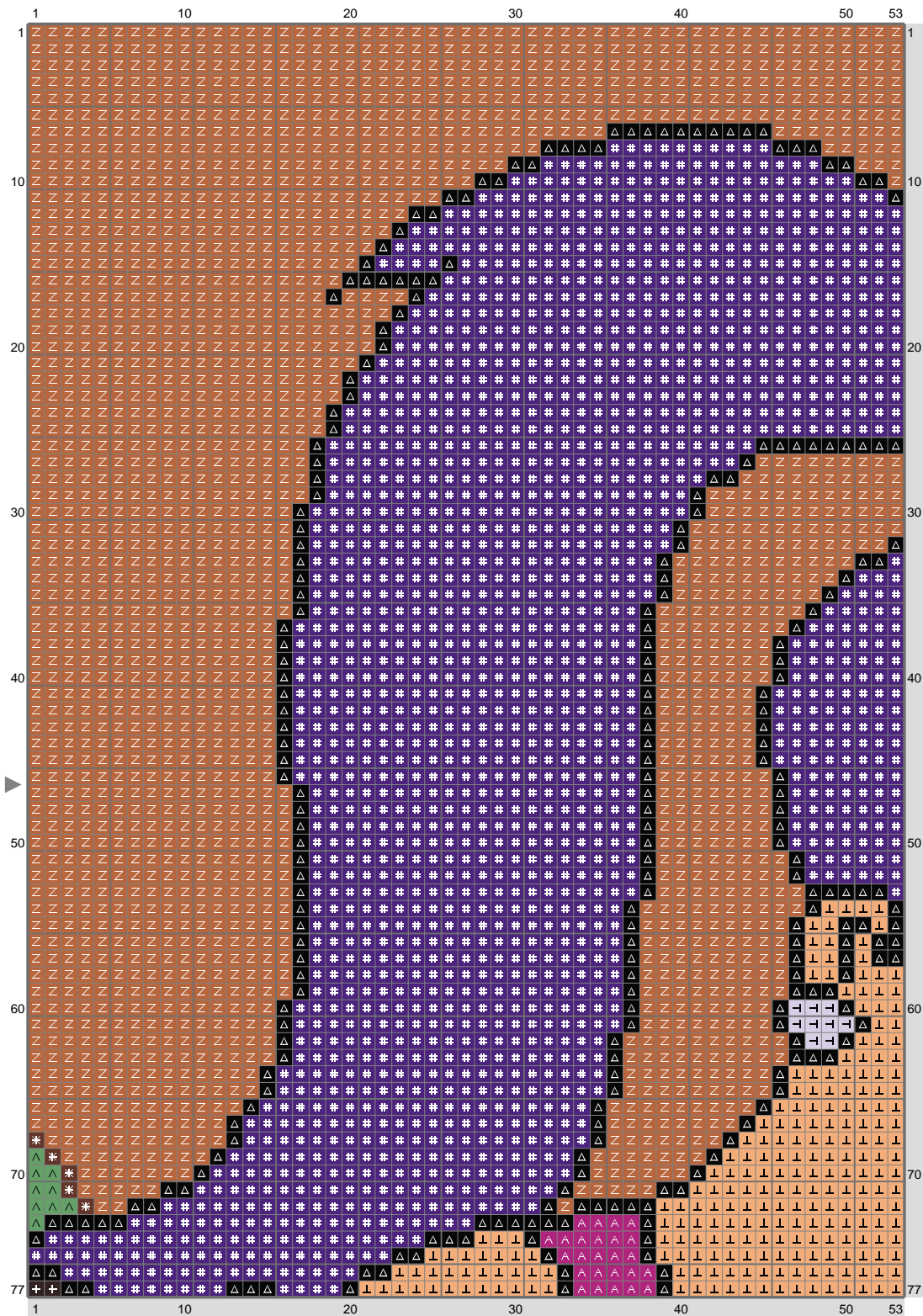
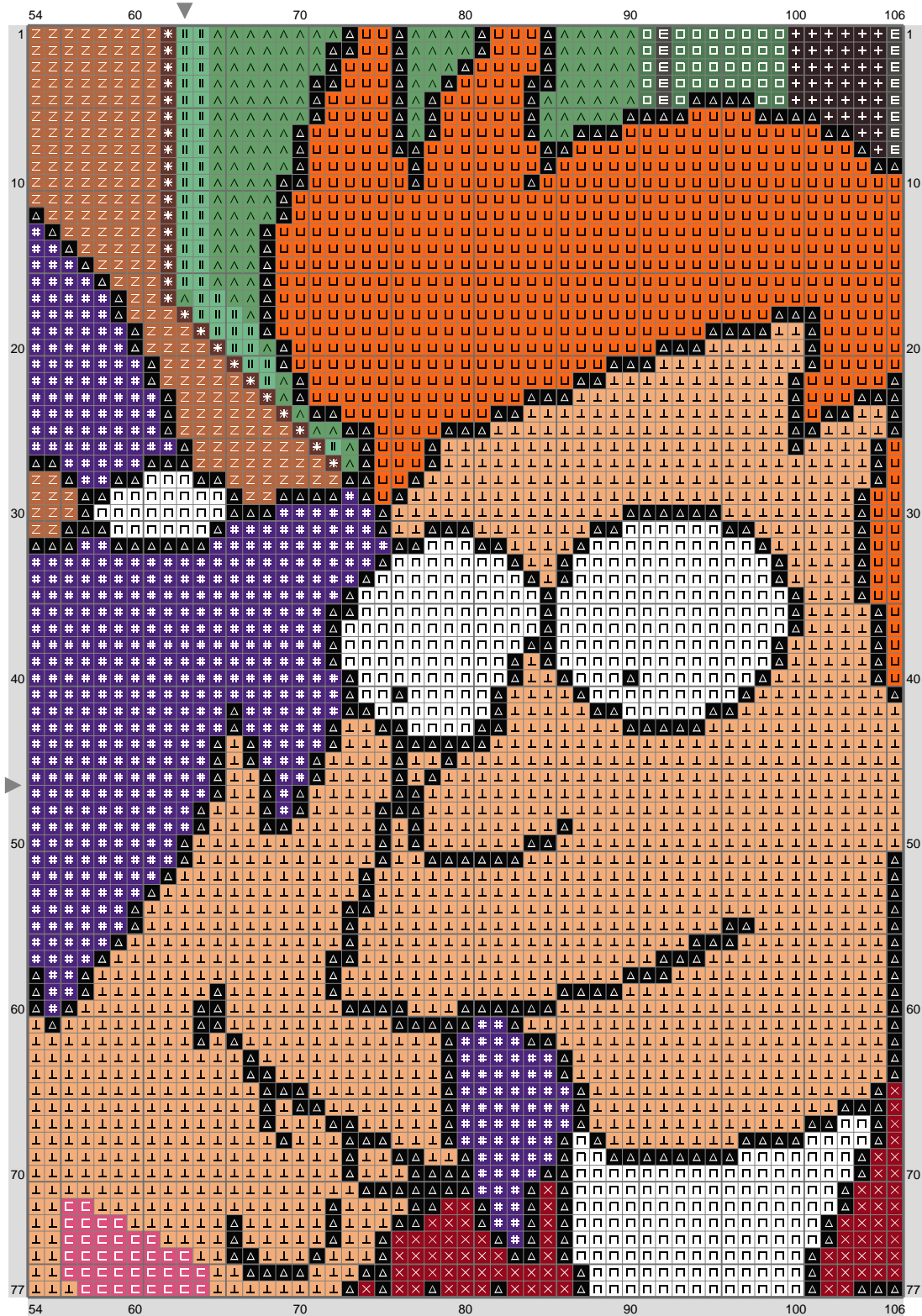


Untitled



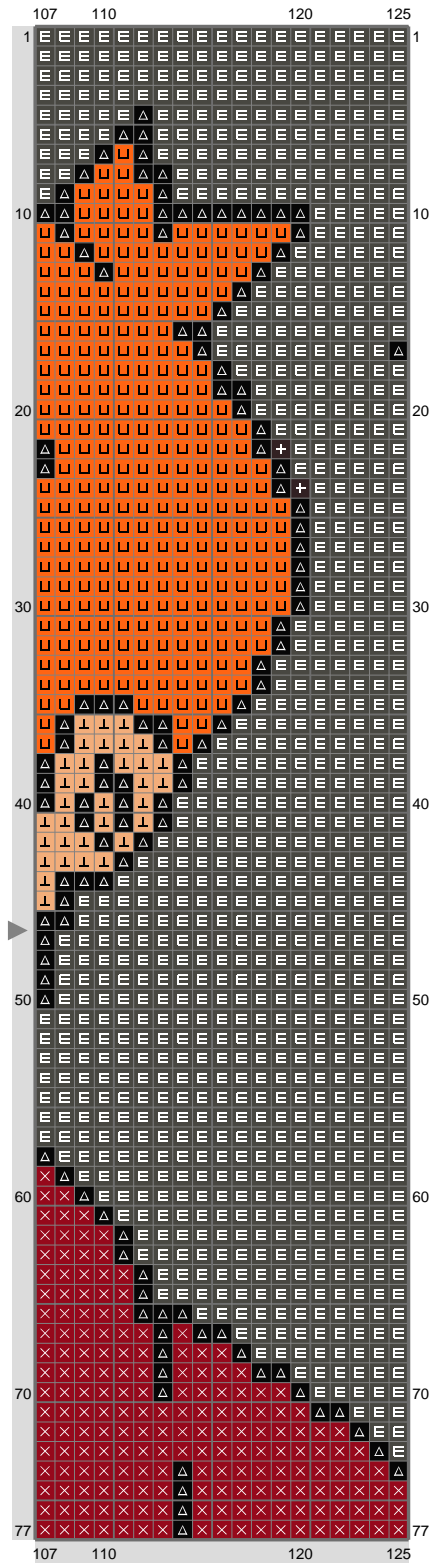
(This chart is printed using KG-Chart LE for Cross Stitch.)

Untitled



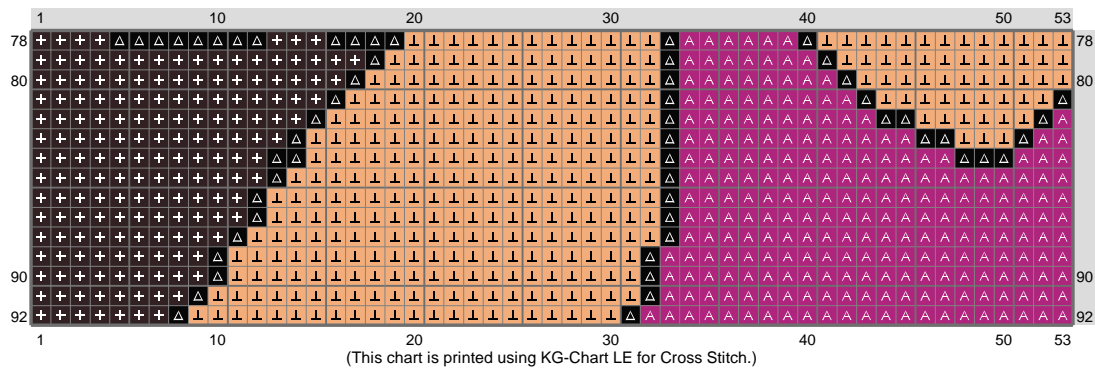
(This chart is printed using KG-Chart LE for Cross Stitch.)

Untitled

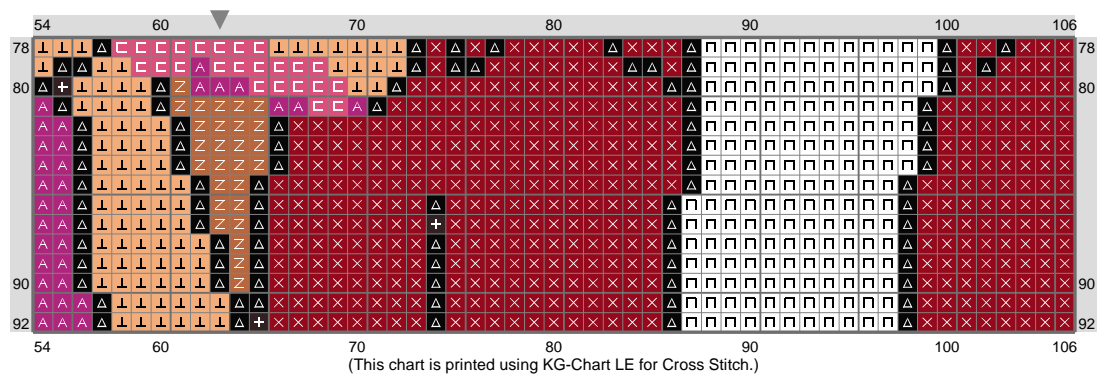


(This chart is printed using KG-Chart LE for Cross Stitch.)

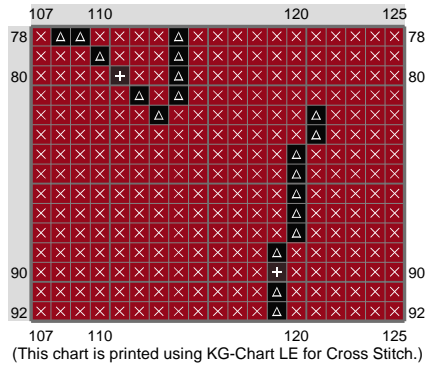
Untitled



Untitled



Untitled



Stitch Count: 125w x 92h
 Finished Size: 45.35 cm x 33.38 cm (14 ct./inch)
 Cloth: Aida
 Cloth's Color: White
 # of colors: 16 Colors

Color Table (DMC)

Cross Stitch

	939	(217 ct)
	3021	(850 ct)
	904	(36 ct)
	498	(896 ct)
	938	(32 ct)
	820	(2226 ct)
	702	(149 ct)
	913	(46 ct)
	740	(911 ct)
	975	(2043 ct)
	917	(294 ct)
	3350	(61 ct)
	977	(2109 ct)
	168	(9 ct)
	B5200	(559 ct)
	310	(1062 ct)